



Warranty Certificate

(KISANKRAFT COPY)

Incidental / Consequential Loss: KisanKraft Limited or its manufacturers will not be liable for general damages, including bodily injuries, or for incidental or consequential damages including, but not limited to, loss of use, loss of profits, loss of production, expense of substitute equipment or other commercial loss or damage.

Limitation of Liability: This limited warranty is in lieu of all other express warranties, obligations, or liabilities. Any implied warranties, obligations or liabilities, including, but not limited to, any implied warranty of merchantability shall be limited in duration to the applicable warranty period. Any action for breach of any warranties hereunder, including, but not limited to, any implied warranty of merchantability must be brought within the applicable warranty period.

Modifications of Warranty: No agent, representative, dealer, or employee of KisanKraft Limited or any of its manufacturers has the authority to increase or alter the obligations of this warranty.

Assignment / Transfer of warranty: The warranty cannot be assigned and shall not transfer if the product is resold by the first buyer. The above warranties are extended to the first end user (original purchaser), and no warranty is made, nor authorized to be made assignable on resale by the first end user.

What you must do to obtain limited warranty service: To obtain performance of any obligation under this warranty for failure during the applicable warranty period, you must deliver the defective product, to the nearest Authorized Dealer, along with proof-of-purchase (invoice/receipt). KisanKraft Limited, its manufacturers and its dealers reserve the right to inspect the claimed defective part(s) to determine if the malfunction is the result of a defect covered by this warranty. Please note that the decision of KisanKraft Limited with respect to any warranty claim is final.

After-sales Service (Including Warranty): KisanKraft Limited does not sell directly to consumers. All sales or supplies are made through Authorized Dealers. It is the responsibility of the Authorized Dealer to provide all after-sales service to consumers. Any warranty claim should be raised by dealer to KisanKraft Limited as per warranty policy.

Jurisdiction: All disputes are subject to Bangalore court's jurisdiction.

Notes:

- This purchase is not contingent upon a product demonstration. The purchaser shall satisfy himself with the product, including any product demonstration or verification of any function, before buying. KisanKraft Limited or its authorized dealers, including online sellers, shall not be liable to give any on-site demonstration after purchase of any of the product.
- Any product once used will not be taken back by KisanKraft Limited.
- Warranty and After Sale Services (including but not limited to installation, Demonstration, Repair, Routine Maintenance etc.), should be done through the Authorized Dealer selling this product.
- Dealers should have their own technician to provide After Sales Services to their Customers. KisanKraft Limited provides free training to Authorized Dealer's technicians at KisanKraft Limited's head office, on request from Authorized Dealer.

🌐: www.kisankraft.com ✉: info@kisankraft.com ☎: +91.80. 6835 7800

This warranty is null & void, if you fail to register the warranty with KisanKraft by sending the KisanKraft Copy with dealer's stamp. KisanKraft Limited.



Warranty Certificate

(DEALER COPY)

Product	AGRICULTURAL INTERCULTIVATOR / POWER WEEDER	KisanKraft Invoice Date	
Brand	KisanKraft	KisanKraft Invoice No.	
Model	☐ KK-IC-200P ☐ KK-IC-212P		
WARRANTY PERIOD	6 MONTHS	FOR THE SPECIFIED PERIOD FROM THE DATE OF SALE OR DELIVERY WHICHEVER IS EARLIER.	
Dealer's Invoice Date		Dealer's Invoice No.	
Buyer's Info (Name, Address, Phone, etc.):		Dealer's Stamp (Address, Phone, TIN, etc.):	
Buyer's Sign		Dealer's Sign	

Warranty Policy

What is covered: KisanKraft Limited and its manufacturers warrant this product to be free from defects in material or workmanship. All parts defective in material and workmanship are covered. This warranty will only cover defects arising under normal usage.

This warranty is limited to repair or replacement by KisanKraft Limited or its manufacturers of such parts as appear to KisanKraft or its manufacturers, upon inspection, to be defective in material and/or workmanship. KisanKraft or its manufacturers make no warranty with respect to items not manufactured or sold by them. No onsite warranty is provided by KisanKraft Limited or its manufacturers. Defective items must be brought/sent to our Authorized Dealer or KisanKraft Limited's office for service.

What is not covered: The *warranty shall become null and void* and neither KisanKraft Limited nor any of its manufacturers, nor its authorized dealers assume any responsibility, if the failure was caused by the following:

- (1) Operation of product with incorrect fuel or lubricants, (2) Incorrect usage of machine or misuse, (3) Lack of maintenance, (4) Negligence, (5) Accident or physical damage, (6) Repairs made by unauthorized parties and/or with unauthorized parts, (7) Improper set up, adjustments, tampering or altered products (8) Any modification to the product what-so-ever.

Important: (1) Normal maintenance and adjustments to the product is the responsibility of the customer. (2) Normal wear and tear are not covered under warranty. (3) Rubber/plastic parts and consumables such as blades, clutch and clutch-bell, sparkplugs, nylon line, air-filters, fuel-filters, oil seals and gaskets etc. are not covered under the warranty. (4) Electrical Motor, Electrical Parts, Battery Etc. are not covered under the warranty.

🌐: www.kisankraft.com ✉: info@kisankraft.com ☎: +91.80. 6835 7800

This warranty is null & void, if you fail to register the warranty with KisanKraft by sending the KisanKraft Copy with dealer's stamp.

KisanKraft Limited

Incidental / Consequential Loss: KisanKraft Limited or its manufacturers will not be liable for general damages, including bodily injuries, or for incidental or consequential damages including, but not limited to, loss of use, loss of profits, loss of production, expense of substitute equipment or other commercial loss or damage.

Limitation of Liability: This limited warranty is in lieu of all other express warranties, obligations, or liabilities. Any implied warranties, obligations, or liabilities, including, but not limited to, any implied warranty of merchantability shall be limited in duration to the applicable warranty period. Any action for breach of any warranties hereunder, including, but not limited to, any implied warranty of merchantability must be brought within the applicable warranty period.

Modifications of Warranty: No agent, representative, dealer, or employee of KisanKraft Limited or any of its manufacturers has the authority to increase or alter the obligations of this warranty.

Assignment / Transfer of warranty: The warranty cannot be assigned and shall not transfer if the product is resold by the first buyer. The above warranties are extended to the first end user (original purchaser), and no warranty is made, nor authorized to be made assignable on resale by the first end user.

What you must do to obtain limited warranty service: To obtain performance of any obligation under this warranty for failure during the applicable warranty period, you must deliver the defective product, to the nearest Authorized Dealer, along with proof-of-purchase (invoice/receipt). KisanKraft Limited, its manufacturers and its dealers reserve the right to inspect the claimed defective part(s) to determine if the malfunction is the result of a defect covered by this warranty. Please note that the decision of KisanKraft Limited with respect to any warranty claim is final.

After-sales Service (Including Warranty): KisanKraft Limited does not sell directly to consumers. All sales or supplies are made through Authorized Dealers. It is the responsibility of the Authorized Dealer to provide all after-sales service to consumers. Any warranty claim should be raised by dealer to KisanKraft Limited as per warranty policy.

Jurisdiction: All disputes are subject to Bangalore court's jurisdiction.

Notes:

- This purchase is not contingent upon a product demonstration. The purchaser shall satisfy himself with the product, including any product demonstration or verification of any function, before buying. KisanKraft Limited or its authorized dealers, including online sellers, shall not be liable to give any on-site demonstration after purchase of any of the product.
- Any product once used will not be taken back by KisanKraft Limited.
- Warranty and After Sale Services (including but not limited to installation, Demonstration, Repair, Routine Maintenance etc.), should be done through the Authorized Dealer selling this product.
- Dealers should have their own technician to provide After Sales Services to their Customers. KisanKraft Limited provides free training to Authorized Dealer's technicians at KisanKraft Limited's head office, on request from Authorized Dealer.

Product	AGRICULTURAL INTERCULTIVATOR / POWER WEEDER	KisanKraft Invoice Date	
Brand	KisanKraft	KisanKraft Invoice No.	
Model	☐ KK-IC-200P ☐ KK-IC-212P		
WARRANTY PERIOD	6 MONTHS	FOR THE SPECIFIED PERIOD FROM THE DATE OF SALE OR DELIVERY WHICHEVER IS EARLIER.	
Dealer's Invoice Date		Dealer's Invoice No.	
Buyer's Info (Name, Address, Phone, etc.):		Dealer's Stamp (Address, Phone, TIN, etc.):	
Buyer's Sign		Dealer's Sign	

Warranty Policy

What is covered: KisanKraft Limited and its manufacturers warrant this product to be free from defects in material or workmanship. All parts defective in material and workmanship are covered. This warranty will only cover defects arising under normal usage.

This warranty is limited to repair or replacement by KisanKraft Limited or its manufacturers of such parts as appear to KisanKraft or its manufacturers, upon inspection, to be defective in material and/or workmanship. KisanKraft or its manufacturers make no warranty with respect to items not manufactured or sold by them. No onsite warranty is provided by KisanKraft Limited or its manufacturers. Defective items must be brought/sent to our Authorized Dealer or KisanKraft Limited's office for service.

What is not covered: The *warranty shall become null and void* and neither KisanKraft Limited nor any of its manufacturers, nor its authorized dealers assumes any responsibility, if the failure was caused by the following:

- (1) Operation of product with incorrect fuel or lubricants, (2) Incorrect usage of machine or misuse, (3) Lack of maintenance, (4) Negligence, (5) Accident or physical damage, (6) Repairs made by unauthorized parties and/or with unauthorized parts, (7) Improper set up, adjustments, tampering or altered products (8) Any modification to the product what-so-ever.

Important: (1) Normal maintenance and adjustments to the product is the responsibility of the customer. (2) Normal wear and tear are not covered under warranty. (3) Rubber/plastic parts and consumables such as blades, clutch and clutch-bell, sparkplugs, nylon line, air-filters, fuel-filters, oil seals and gaskets etc. are not covered under the warranty. (4) Electrical Motor, Electrical Parts, Battery Etc. are not covered under the warranty.

Wide Range of Products for Every Need



For more information give **MISSED CALL: 07676065555**



Many of our products have BIS: ISI
certification.



User Manual



KK-IC-200P



KK-IC-212P

KisanKraft Limited

Warehouse: 818 3B1 to 818 3B18, Podalakur - Sangam Road, Prabagiripatnam,
Podalakur, Nellore - 524345, Andhra Pradesh, INDIA

Head Office: #4, 1st Main, 7-A Cross, Maruthi Layout, Dasarahalli, HAF Post, Hebbal,
Bangalore 560024, Karnataka, INDIA

- ♦ Bangalore (HO) ♦ Ahmedabad ♦ Bhopal ♦ Bhubaneswar ♦ Coimbatore
- ♦ Guwahati ♦ Hyderabad ♦ Nellore ♦ Jaipur
- ♦ Karnal ♦ Kolkata ♦ Lucknow ♦ Pune ♦ Raipur



Scan the QR code to download
KisanKraft App

App is available on



Scan the QR code for
KisanKraft Youtube Channel



Product	AGRICULTURAL INTERCULTIVATOR / POWER WEEDER	KisanKraft Invoice Date	
Brand	KisanKraft	KisanKraft Invoice No.	
Model	❑ KK-IC-200P ❑ KK-IC-212P		
WARRANTY PERIOD	6 MONTHS	FOR THE SPECIFIED PERIOD FROM THE DATE OF SALE OR DELIVERY WHICHEVER IS EARLIER.	
Dealer's Invoice Date		Dealer's Invoice No.	
Buyer's Info (Name, Address, Phone, etc.):		Dealer's Stamp (Address, Phone, TIN, etc.):	
Buyer's Sign		Dealer's Sign	

Warranty Policy

What is covered: KisanKraft Limited and its manufacturers warrant this product to be free from defects in material or workmanship. All parts defective in material and workmanship are covered. This warranty will only cover defects arising under normal usage.

This warranty is limited to repair or replacement by KisanKraft Limited or its manufacturers of such parts as appear to KisanKraft or its manufacturers, upon inspection, to be defective in material and/or workmanship. KisanKraft or its manufacturers make no warranty with respect to items not manufactured or sold by them. No onsite warranty is provided by KisanKraft Limited or its manufacturers. Defective items must be brought/sent to our Authorized Dealer or KisanKraft Limited's office for service.

What is not covered: The *warranty shall become null and void* and neither KisanKraft Limited nor any of its manufacturers, nor its authorized dealers assume any responsibility, if the failure was caused by the following:

(1) Operation of product with incorrect fuel or lubricants, (2) Incorrect usage of machine or misuse, (3) Lack of maintenance, (4) Negligence, (5) Accident or physical damage, (6) Repairs made by unauthorized parties and/or with unauthorized parts, (7) Improper set up, adjustments, tampering or altered products (8) Any modification to the product what-so-ever.

Important: (1) Normal maintenance and adjustments to the product is the responsibility of the customer. (2) Normal wear and tear are not covered under warranty. (3) Rubber/plastic parts and consumables such as blades, clutch and clutch-bell, sparkplugs, nylon line, air-filters, fuel-filters, oil seals and gaskets etc. are not covered under the warranty. (4) Electrical Motor, Electrical Parts, Battery Etc. are not covered under the warranty.

Incidental / Consequential Loss: KisanKraft Limited or its manufacturers will not be liable for general damages, including bodily injuries, or for incidental or consequential damages including, but not limited to, loss of use, loss of profits, loss of production, expense of substitute equipment or other commercial loss or damage.

This warranty is null & void, if you fail to register the warranty with KisanKraft by sending the KisanKraft Copy with dealer's stamp. KisanKraft Limited

KisanKraft has a large range of products to serve the farmers. A list of our products is given below:

Brush Cutters and Accessories Brush Cutter/Power Weeder Backpack Brush Cutter Tea Pruner Pole pruner with Engine Reaper Attachment Blades-Circular Blades (2 & 3 points) Baffle Nylon Rope Tap & Go Chainsaws Petrol Chainsaw Electric Chainsaw Chain Sharpening Machine Engines and Water Pumps Engine –Diesel-(Horizontal) Engine –Diesel(Vertical) Engine-Kerosene Water Pump with Petrol Engine Water Pump with Kerosene Engine Water Pump with Diesel Engine Hand Tools Secateurs Folding Saw Garden Rake Garden Shovel Hedge Shear Lopper Telescopic Hedge Shear Telescopic Lopping Shear Tree Pruner Telescopic Steel Pipe & Fruit Picker Bag Sheep Shear Garden Tools Electric Pressure Washer Hedge Trimmer Lawn Mower (Electric, Petrol & Manual) Leaf Blower	Cultivators and Accessories Petrol and Diesel Sprayers and Accessories Battery Sprayer Portable Power Sprayer Trolley Sprayer Manual Knapsack Sprayer Manual Pressure Sprayer Rose Cans Hose Crimping Machine HTP Sprayer HTP Delivery Hose HTP Hose Reel HTP Stand HTP Gun / Lance(Brass Rod Knapsack Power Sprayer Mister / Duster / Granule Spreader HTP Sprayer Set with Diesel Engine HTP Sprayer Set with Kerosene Engine Fogging Machine Milking Machine Wood Shredder Fodder Ensiling Chaff Cutter Fodder Grinder Chaff Cutter Fodder Mini Chaff Cutter Harvester Maize Sheller Maize Sheller + Dehusker Maize Combine Harvester Onion Digger Carlotta Italy Tea Leaf Harvester Sugarcane Combine Harvester Sugarcane Leaf Stripper Transplanter and Post Hole Digger Paddy Transplanter (2 & 8 Rows) Transplanter-Vegetable & Tobacco Post Hole Digger(4" to 14" Augers)
--	---

SL-No	KK-No	KK-Name	Qty
10	E15-10	Nut M6 Flanged	2
11	E15-11	Bolt M6x30 Flanged Hex	1

Limitation of Liability: This limited warranty is in lieu of all other express warranties, obligations, or liabilities. Any implied warranties, obligations, or liabilities, including, but not limited to, any implied warranty of merchantability shall be limited in duration to the applicable warranty period. Any action for breach of any warranties hereunder, including, but not limited to, any implied warranty of merchantability must be brought within the applicable warranty period.

Modifications of Warranty: No agent, representative, dealer, or employee of KisanKraft Limited or any of its manufacturers has the authority to increase or alter the obligations of this warranty.

Assignment / Transfer of warranty: The warranty cannot be assigned and shall not transfer if the product is resold by the first buyer. The above warranties are extended to the first end user (original purchaser), and no warranty is made, nor authorized to be made assignable on resale by the first end user.

What you must do to obtain limited warranty service: To obtain performance of any obligation under this warranty for failure during the applicable warranty period, you must deliver the defective product, to the nearest Authorized Dealer, along with proof-of-purchase (invoice/receipt). KisanKraft Limited, its manufacturers and its dealers reserve the right to inspect the claimed defective part(s) to determine if the malfunction is the result of a defect covered by this warranty. Please note that the decision of KisanKraft Limited with respect to any warranty claim is final.

After-sales Service (Including Warranty): KisanKraft Limited does not sell directly to consumers. All sales or supplies are made through Authorized Dealers. It is the responsibility of the Authorized Dealer to provide all after-sales service to consumers. Any warranty claim should be raised by dealer to KisanKraft Limited as per warranty policy.

Jurisdiction: All disputes are subject to Bangalore court's jurisdiction.

Notes:

- This purchase is not contingent upon a product demonstration. The purchaser shall satisfy himself with the product, including any product demonstration or verification of any function, before buying. KisanKraft Limited or its authorized dealers, including online sellers, shall not be liable to give any on-site demonstration after purchase of any of the product.
- Any product once used will not be taken back by KisanKraft Limited.
- Warranty and After Sale Services (including but not limited to installation, Demonstration, Repair, Routine Maintenance etc.), should be done through the Authorized Dealer selling this product.
- Dealers should have their own technician to provide After Sales Services to their Customers. KisanKraft Limited provides free training to Authorized Dealer's technicians at KisanKraft Limited's head office, on request from Authorized Dealer.

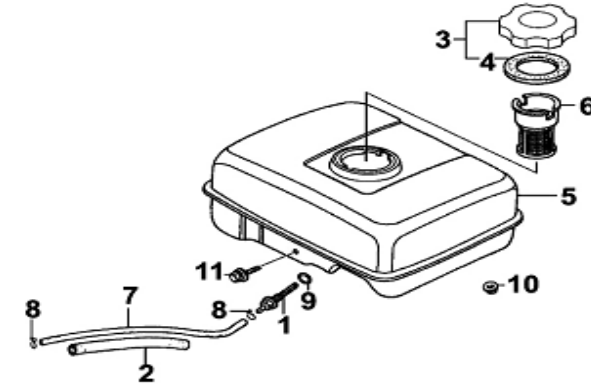
This warranty is null & void, if you fail to register the warranty with KisanKraft by sending the KisanKraft Copy with dealer's stamp. KisanKraft Limited

CONTENTS

BEFORE GETTING STARTED	7
APPLICATION	7
SAFETY INSTRUCTION	8
TECHNICAL SPECIFICATION	12
INSTALLATION AND USE METHODS	14
MAINTAINING METHODS	17
DEBUGGING METHOD OF POWER TILLER	19
TROUBLESHOOTING	21
PRODUCTS FEATURES	25
PARTS DIAGRAM & LIST-BODY-(KK-IC-200P)	27
PARTS DIAGRAM & HANDLE ASSY-(KK-IC-212P)	38
ENGINE PARTS DIAGRAM & LIST	59

SL-No	KK-No	KK-Name	Qty
6	E14-06	Nut M8	2
7	E14-07	Gasket Muffler	1

Fuel tank





SL-No	KK-No	KK-Name	Qty
1	E15-01	Fuel outlet joint	1
2	E15-02	Sleeve Fuel pipe	1
3	E15-03	Fuel tank cap	1
4	E15-04	Gasket Fuel tank Cap	1
5	E15-05	Fuel tank	1
6	E15-06	Fuel Filter	1
7	E15-07	Fuel Tube M4.5x140	1
8	E15-08	Clip Fuel tube	2
9	E15-09	O-ring 14mm (Fuel outlet joint)	1

BEFORE GETTING STARTED

Thank you for purchasing our Inter-cultivator.

- This manual contains information on operation and maintenance of the Inter-cultivator, which is based on the most recent product information available at the time of approval for printing. We reserve the right to make amendments without prior notice and without incurring any obligation for sequences.
- No part of this publication may be reproduced without written permission.
- This manual should be considered a permanent part of the cultivator and remain with it if it is resold.
- Please pay special attention to statements preceded by the following words:

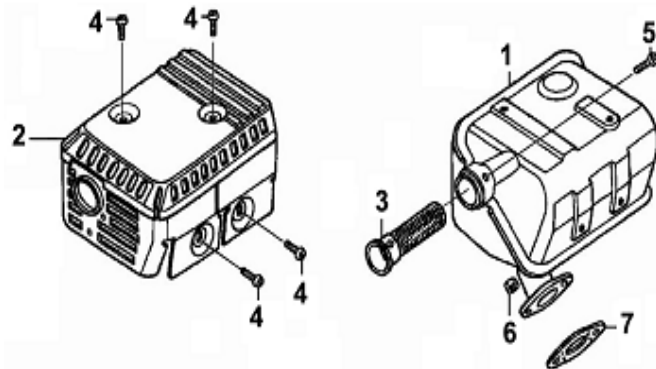
 WARNING	Indicates a strong possibility of severe personal injury or death if instructions are not followed.
 CAUTION	Indicates a possibility of personal injury or equipment damage if instructions are not followed.
NOTE	Gives helpful information.

APPLICATION

The Inter-cultivator is suitable for cultivating the sandy soil and clay soil of canopied vegetables base, slopes with gradient less than 10%, paddy field with the depth of water surface to hard layer not more than 250mm. For weedy and deep plots, remove the weeds before using the Inter-cultivator to cultivate the land. Assemble blades on both side of tilling system, and use pin to fixed blades to do tilling work. Take off resistance rod and assemble ditching blade, for ditching work.

SL-No	KK-No	KK-Name	Qty
12	E13-12	ST Screw M4 x 12	1
13	E13-13	N/A	1
14	E13-14	N/A	1
15	E13-15	N/A	1
16	E13-16	N/A	1
17	E13-17	N/A	1

Muffler



SL-No	KK-No	KK-Name	Qty
1	E14-01	Muffler Assy	1
2	E14-02	N/A	1
3	E14-03	N/A	1
4	E14-04	Screw M5 x 8	4
5	E14-05	N/A	1

SAFETY INSTRUCTION

Training

- Read the instructions carefully. Be familiar with the controls and the proper use of the equipment;
- Never allow children or people unfamiliar with these instructions to use the machine. Local regulations can restrict the age of the operator;
- Never work while people, especially children, or pets are nearby;
- Keep in mind that the operator or user is responsible for accidents or hazards occurring to other people or their property.

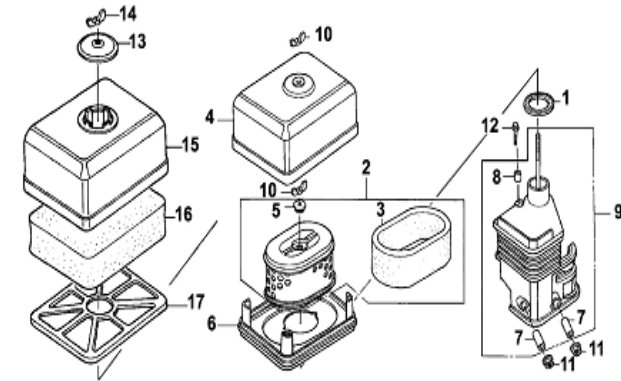
Preparation

- While working, always wear substantial footwear and long trousers. Do not operate the equipment when barefoot or wearing open sandals;
- Thoroughly inspect the area where the equipment is to be used and remove all objects which can be thrown up by the machine;
- WARNING – Petrol is highly flammable:
 - Store fuel in container specifically designed for this purpose;
 - Refuel outdoors only and do not smoke while refueling;
 - add fuel before starting the engine. Never remove the cap of the fuel tank or add petrol while the engine is running or when the engine is hot;
 - if petrol is spilled, do not attempt to start the engine but move the machine away from the area of spillage and avoid creating any source of ignition until petrol vapors have dissipated;
 - replace all fuel tank and container caps securely;
- Replace faulty silencers;
- Before using, always visually inspect to see that the tools are not worn or damaged. Replace worn or damaged elements and bolts in sets to preserve balance.

Operation

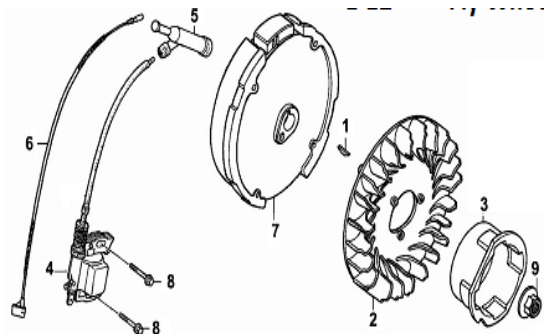
- Do not operate the engine in a confined space where dangerous carbon Monoxide fumes can collect;
- Work only in daylight or in good artificial light;
- Always be sure of your footing on slopes;
- Walk, never run with the machine;
- Exercise extreme caution when changing direction on slopes;
- Do not work on excessively steep slopes;
- Use extreme caution when reversing or pulling the machine towards you;
- Do not change the engine governor settings or over speed the engine;
- start the engine carefully according to manufacturer instructions and with feet well away from the tool(s);
- When start the engine, ensure the Gearshift in neutral position. Do not put hands or feet near or under rotating parts;

Air Cleaner



SL-No	KK-No	KK-Name	Qty
	E13	Air Cleaner Assy	1
1	E13-01	Seal Ring 32x47x3	1
2	E13-02	Air Filter Element	1
3	E13-03	N/A	1
4	E13-04	Filter Case	1
5	E13-05	Rubber Fixer	1
6	E13-06	Cover board	1
7	E13-07	N/A	2
8	E13-08	N/A	1
9	E13-09	Air Cleaner Seat Assy	1
10	E13-10	Butterfly nut M6	2
11	E13-11	Nut M6	2

Fly Wheel



SL-No	KK-No	KK-Name	Qty
1	E12-01	Woodruff key	1
2	E12-02	Fly Wheel Fan	1
3	E12-03	Starter Sleeve	1
4	E12-04	Ignition Coil Assy	1
5	E12-05	Spark Plug Cap	1
6	E12-06	Stop lead	1
7	E12-07	Fly Wheel Assy	1
8	E12-08	Bolt 6 x 25	2
9	E12-09	Nut M14 Fly wheel Assy	1

- k) Never pick up or carry a machine while the engine is running;
- l) Stop the engine:
 - Whenever you leave the machine;
 - Before refueling;
- m) Reduce the throttle setting during engine shut down and, if the engine is provided with a Shut-off valve, turn the fuel off at the conclusion of working;
- n) Never load person, when starting at cobbled road sidewalk or on the road, Please keep watch, and note the traffic situation in case of the potential dangers!
- o) once abnormal condition happens, immediately close the engine! Look for the reason, vibration is often the beginning of the fault
- p) When tilling in the hard land, the blades may lowering the ground, be more careful. If happens, go off the handle bar and not go to control machine

Maintenance and storage

- a) Keep all nuts, bolts, and screws tight to ensure the equipment is in safe working condition.
- b) Never store the equipment with petrol in the tank inside a building where fumes can reach an open flame or spark.
- c) Allow the engine to cool before storing in any enclosure;
- d) To reduce the fire hazard, keep the engine, silencer and petrol storage area free of vegetative material and excessive grease;
- e) Replace worn or damaged parts for safety;
- f) If the fuel tank has to be drained, this shall be done outdoors.

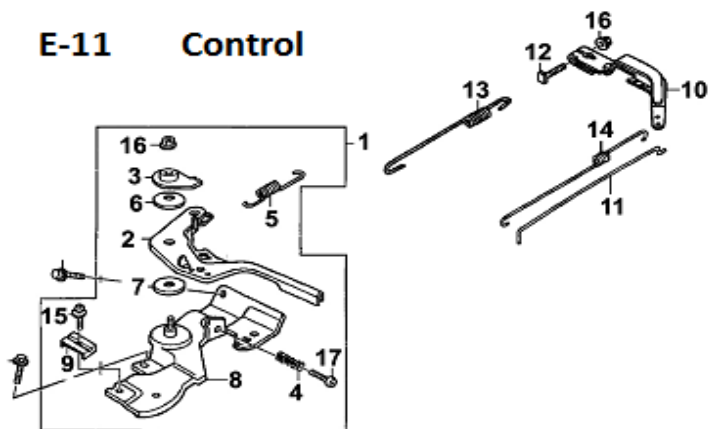
Matters need attention during the use of Intercultivator

- Operator should read this manual before using the machinery , and do the Adjustment and maintenance according to the manual.
- Before using the machinery, following items should be paid attention to:
- Please add clean fuel, make sure the engine is stopped and in well-ventilated Condition, never let fuel get in touch with high temperature surface rotating Parts or electrical components, never add too much oil in order to avoid Overflowing, if there is fuel spillage or leakage, dry it up before starting the machine, cover up fuel tank cap and tighten it. In case of fire, storage sites and venues are strictly prohibited fireworks,
- Check whether the bolt is fixed; any parts are loose or scratches stuck Phenomenon; whether the direction of rotation is consistent with the label mean to.
- Check whether external moving parts and rotating parts have reliable safety protection device and safety signs,
- Minors without training and master, is not allowed to operate the machine.

SL-No	KK-No	KK-Name	Qty
12	E11-12	Quadrate bolt M6x21	1
13	E11-13	Return Spring	1
14	E11-14	Fine Adjustment Spring	1
15	E11-15	N/A	1
16	E11-16	Nut M6 Flanged Nylon	1
17	E11-17	Adjustment Screw	2

Control

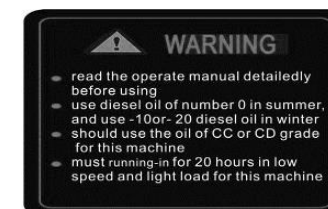
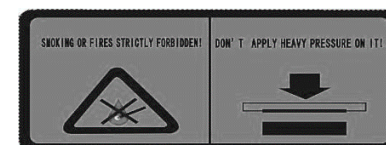
E-11 Control



SL-No	KK-No	KK-Name	Qty
1	E11-01	Speed Adjustment Base Ass.	1
2	E11-02	N/A	1
3	E11-03	N/A	1
4	E11-04	Adjustment Spring	1
5	E11-05	Throttle spring	1
6	E11-06	N/A	1
7	E11-07	N/A	2
8	E11-08	N/A	1
9	E11-09	N/A	1
10	E11-10	Speed Adjustment arm	1
11	E11-11	Pulling Rod	1

2. Safety Labels

- Muffler is a high temperature spare part, do not touch the power tiller in work or out of work freshly.
- When the power tiller is working, keep an eye on the rotary parts, do not be too close to the machine to avoid being hurt by the rotary blades.
- Keep the components of oil box away from fire and smoke.
- Keep this machine stabilization Before Use and Read the instruction carefully
- Please refuel in time
- Please pay attention to warning signs

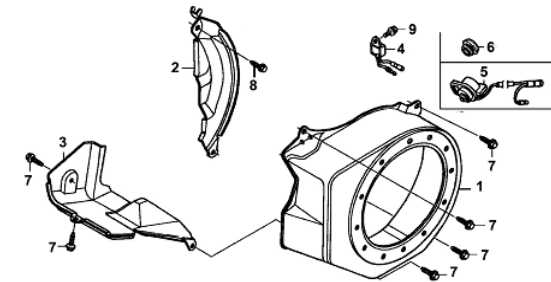


TECHNICAL SPECIFICATION

Model		KK-IC-212P
Items		Parameter
Engine	Displacement	212 cc
	Type	4 Stroke, Petrol Engine
	Rated power	5.22 kW (7 hp)
	Rated speed	3600 RPM
	Fuel Tank	3.6 L
	Max Torque	11 Nm/2500 RPM
	Oil Tank	0.6L
	Bore * Stroke	68*54 mm
	Transmission Model inside transmission)	Gear drive (2 Fwd. 1 Rev)
	Connection type from output shaft to blades)	Coaxial straight-through type
	Speed (r/min)	High gear: 135; slow gear: 90
knife	Max radius of gyration (mm)	180
	Blades (pcs)	24
	Cultivation depth (cm)	≥4
	Cultivation width (cm)	54-105
	operating speed (m/s)	0.1~0.3
	Hourly efficiency(hm2/hm)	≥0.04
	Main fuel consumption (kg/hm2)	≤30
	SFC (Max)	≤374g/kWh

SL-No	KK-No	KK-Name	Qty
10	E9-10	Starter spring	1
11	E9-11	Friction Spring 16x1	1
12	E9-12	Bolt M6x12 Flanged Hex	3

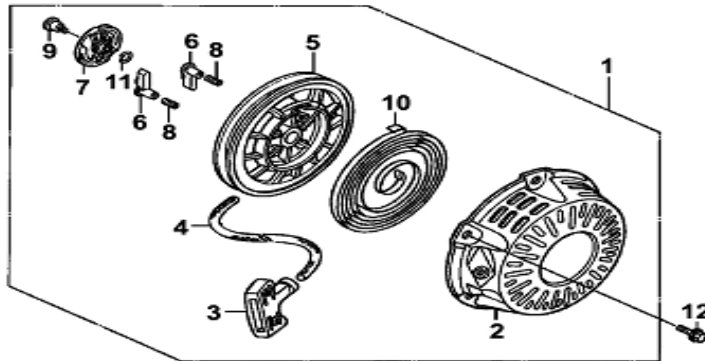
Fan Cover



SL-No	KK-No	KK-Name	Qty
1	E10-01	Fan cover	1
2	E10-02	Side Plate	1
3	E10-03	Wind guide	1
4	E10-04	Current Amplifier	1
5	E10-05	Engine switch	1
6	E10-06	N/A	1
7	E10-07	Bolt M6x12 Flanged Hex	6
8	E10-08	Bolt M6 x 20 Flanged Hex	1

SL-No	KK-No	KK-Name	Qty
27	E8-27	N/A	1
28	E8-28	N/A	1

Recoil Starter



SL-No	KK-No	KK-Name	Qty
1	E9-01	Recoil Starter Assy	1
2	E9-02	Starter cover	1
3	E9-03	Pulling handle	1
4	E9-04	Rope	1
5	E9-05	Roller/Rope Reel	1
6	E9-06	Ratchet	2
7	E9-07	Ratchet guide	1
8	E9-08	Ratchet Spring	2
9	E9-09	Pivot Bolt	1

* Specifications may change due to improvements, and for reference only, not as the acceptance basis

KK-IC-200P

INTER-CULTIVATOR	Dimension (L x W x H) (mm)	1380x650x970
	N.W/G.W(kg)	70/73
	Transmission System	Belt + Chain
	Weeding Scope (mm)	500 - 1000
	Working Dia. (mm)	300/350
	Number of Gears	2 Fwd, 1 Rev
	Cultivation Width	77-78 cm
	Cultivation Depth	4.87-5 cm
ENGINE	Type	4-Stroke/Petrol
	Displacement	212 cc
	Bore x stroke	68x54mm
	Compression Ratio	8.5 : 1
	Max. Torque (nm)	11N.m/2500rpm
	Ignition system	Transistor Magneto
	Starting System	Manual Start
	Oil capacity	0.6 L
	Fuel tank capacity	3.6 L
	Fuel consumption	0.89L/hr.
	N.W./G.W	15 / 17kg
	Air Cleaner	Oil Bath Filter
	RPM(Rota)	800
	Number of Gears	2 Fwd, 1 Rev

Note: Technical data is subject to change without prior notice.

INSTALLATION AND USE METHODS

Installation

Before sending, we did the debugging of the Main part. But before you operate it, you still need some check and adjustment, to make it to the fullest use. Since you get the mini tiller, assemble it as follows:

1. Fix the walking wheel to the Six squares opposite ends of the drive shaft respectively with $\phi 8$ pin
2. Assembly of trailer coupling: connect rod assembly in the trailer body, with the connecting pin shaft connection and insert the cotter pin, then insert Subsoil resistance bar.
3. Installation of handle pipe: hand the tube opposition tube slots, adjust the height, use lock handle and bolt fixed before you use the power tiller, you'd better check the parts and do some adjustment for better use.

Routine check

- **Check engine fuel**
- Put the engine in a horizontal position
- Turn out the oil level gauge, Wipe cleanly
- Insert the oil level gauge into the oil passage hole(don't need to turn in the thread)
- Turn out the oil level gauge, check the oil lever, within the Oil scale mark can be thought as normal
- Oil SAE10W-30 is recommended as the general lubricating oil, it suitable to normal environment.

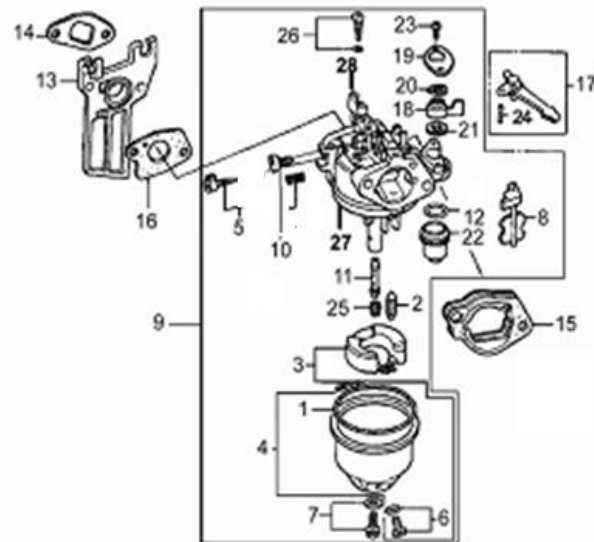
Check the oil of gearbox

- Put the engine in a horizontal position, turn out the oil level gauge (see picture 4)
- Normal adding oil is 1.6L, the line under the lower edge of oil filler point, if oil lever in a low lever, add to the regular lever

SL-No	KK-No	KK-Name	Qty
5	E8-05	Adjustment screw Idle speed	1
6	E8-06	Screw (Fuel Cup)	1
7	E8-07	Tighten bolt (Fuel cup)	1
8	E8-08	Chock Valve Assy	1
9	E8-09	Carburetor Assy	1
10	E8-10	Adjustment Screw Assy (mixture ratio)	1
11	E8-11	Main Nozzle	1
12	E8-12	O-ring 21x2(Sediment cup)	1
13	E8-13	Block, Carburetor/Insulator	1
14	E8-14	Gasket, inlet port	1
15	E8-15	Steel gasket	1
16	E8-16	Gasket carburetor	1
17	E8-17	Hand grip chock valve assy	1
18	E8-18	Handlebar Fuel on/off	1
19	E8-19	Upper cover (Fuel on/off)	1
20	E8-20	Spring Washer-(Fuel on/off)	1
21	E8-21	Fuel Valve	1
22	E8-22	Sediment cup	1
23	E8-23	Screw M3x7	2
24	E8-24	N/A	1
25	E8-25	Main jet	1
26	E8-26	Measure hole Assy idle speed	1

SL-No	KK-No	KK-Name	Qty
14	E7-14	Cam Shaft Assy	1
15	E7-15	N/A	1
16	E7-16	N/A	1
17	E7-17	Inlet valve oil seal	1

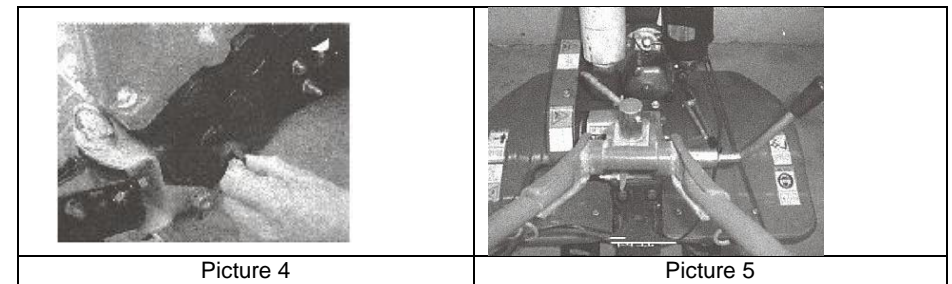
Carburetor



SL-No	KK-No	KK-Name	Qty
1	E8-01	Rubber seal (Fuel cup)	1
2	E8-02	Needle Valve	1
3	E8-03	Fuel Floater	1
4	E8-04	Fuel cup	1

Adjustment

- **Adjust height of handlebar**
- **Caution:** in order to avoid topple over, please put the engine in flat ground before adjusting the height of handlebar. (See picture 5)



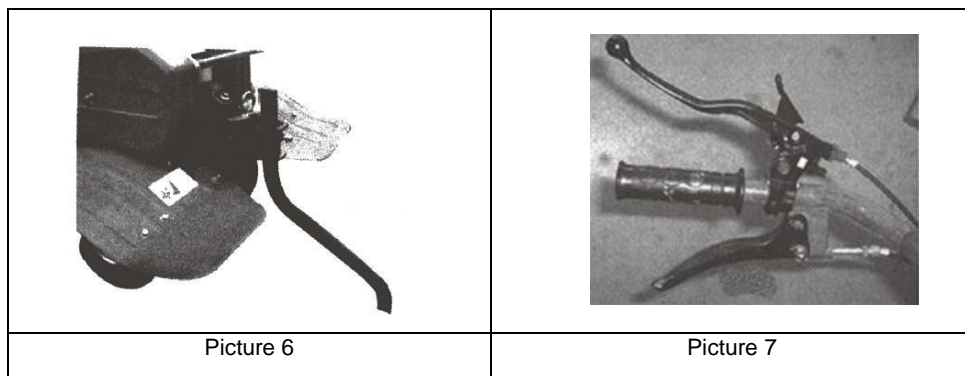
- Picture 4

 - Loosen the regulating handle, choose suitable hole, adjust the height of handle bar to a man's waist, and screw the regulating handle
- Picture 5

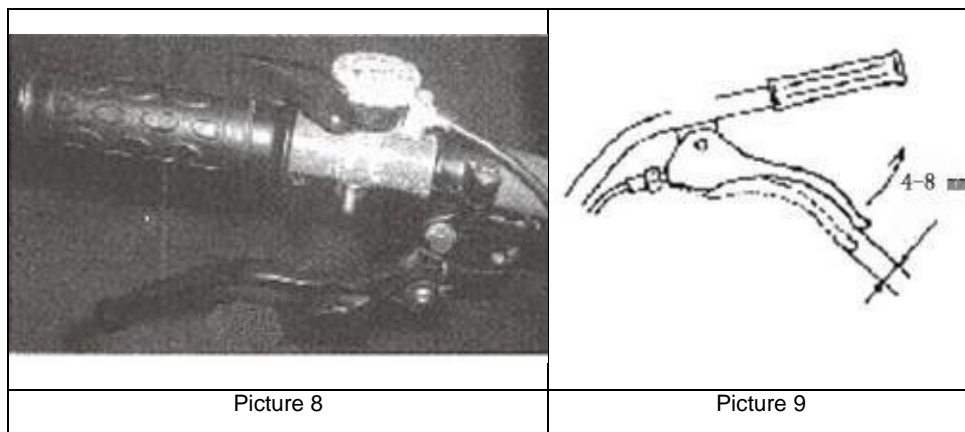
 - **Adjust depth of the rotary tillage**
 - By adjusting the height of speed control rod, control the depth of rotary tiller, shift down, depth increase; shift up, depth decrease.
- **Start the power tiller**
 - Put the tiller in neutral gear position, press down handle bar of the emergency power cut off devices, then start the machinery according to this instruction
- **Adjust the clutch**

Caution: reduce the speed of engine before using clutch.

- By adjusting the "separate" or "join" of clutch, to control the output of engine power.
- Grip the clutch, clutch join together, the engine power transport to the power tiller, rotary blades begin running. (see picture 7)



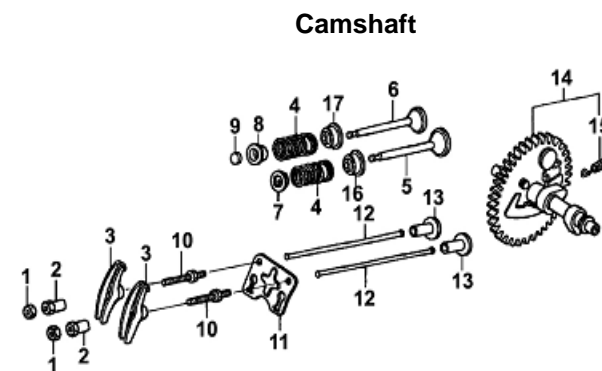
- Confirm the density of clutch cable, 4-8mm can be the general degree, out of the scope, you have to loose locknut for adjustment, and tighten up. (see picture 9)



Gear shifting

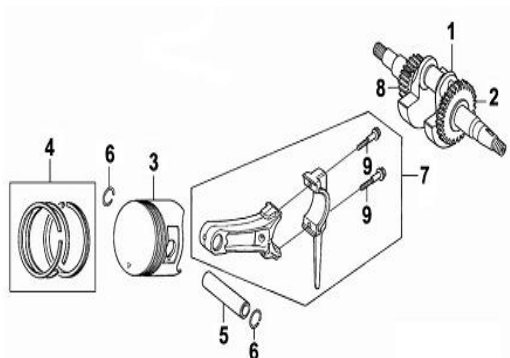
Reverse (-1), Forward(1), Neutral(0),Forward(2)

- 4 gear shifting
 - The way of gear changes
- Put the throttle switch to the left (a minimum position) Gear shifting by a clockwise rotation
 - Loose the clutch handle to make the clutch separate
 - Clench the clutch handle bar. Then the power tiller will work on the different gear shifting, and then step on the gas to the new speed as inquired.



SL-No	KK-No	KK-Name	Qty
	E7-1,2,3,10	Rocker Assy	1
1	E7-01	Buy Rocker Assy	
2	E7-02	Buy Rocker Assy	
3	E7-03	Buy Rocker Assy	
4	E7-04	Valve Spring	2
5	E7-05	Intake Valve	1
6	E7-06	Exhaust Valve	1
7	E7-07	Spring seat Intake Valve	1
8	E7-08	Spring Seat Exhaust Valve	1
9	E7-09	Cap Exhaust Valve	1
10	E7-10	Buy Rocker Assy	2
11	E7-11	Pusher guide	1
12	E7-12	Pusher	2
13	E7-13	Tappet	2

Crankshaft Piston



SL-No	KK-No	KK-Name	Qty
1	E6-01	Crankshaft Assy	1
2	E6-02	Governor Gear	1
3	E6-03	Piston	1
4	E6-04	Piston Ring Assy	1
5	E6-05	Piston Pin	1
6	E6-06	Clip Piston Pin	2
7	E6-07	Connecting rod Assy	1
8	E6-08	Timing Gear	1
9	E6-09	Bolt connecting rod M7x35	2

MAINTAINING METHODS

Because of running, friction and load change, inevitably produce connection bolt looseness, parts damage phenomenon, which make the system's correct state destroyed, the engine 's power decline, fuel consumption increase, increases the normal use of power tiller. In order to reduce the occurrence of the above situation, we must strictly, regularly do the maintenance work well. To keep the micro tillage machine in good technical shape and prolong its service life.

Running-in

1. The running of diesel engine Please consult its user manual.
2. new power tiller or repaired power tiller, should work for 1 hour in zero load condition. After 5 hours light load working, run out the whole lubricating oil of the transmission and crankcase of diesel engine at once while the temperature is hot, and then conduct 4 hours running-in as per the fourth demands.

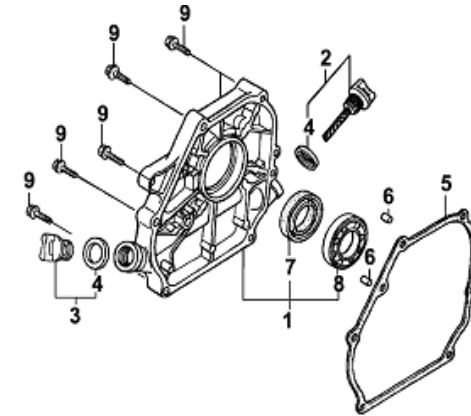
The technical maintenance

1. Per shift maintenance (before running and after running every time)
 - 1) Listen and observe the abnormal phenomenon (like abnormal sounds, overheating and bolt failure)
 - 2) Check the Oil leakage status of engine, transmission and walking box.
 - 3) Check the oil lever of engine and transmission, if it is within the limits of oil scale
 - 4) Timely clean the dirt, weeds, oil pollution of the power tiller.
 - 5) Write down the tillage record.
2. First class maintenance (ever 150 hours)
 - 1) Conduct the whole contents of per shift maintenance.
 - 2) Clean the transmission and crankcase, and change the oil
 3. Check the clutch, shift gear and reverse gear system.
3. Second class maintenance (ever 900 hours).
 - 1) Check the whole contents of working for 150hours,
 - 2) Check all the gear, bearing, if wearing serious, please change the parts.
 - 3) Other parts like rotary blades or bolt of the power tiller, if any, please change it.
 4. Technical checking (1500-2000 hours)
 - 1) Ask professional personnel to check the friction plate and clutch.
 5. Maintenance of gasoline power tiller.

The table of technical maintenance (sign □ means the things you need do)

Working time / contents	Every day	8 hours under the half load	20 hours later or the first month later	150 hours or the third month	1000 hours or per year	2000 hours or every 2 years
Check the bolt, nut	(
Check and add oil	(
Clean and change oil		((first time)	((second time)	((third time and afterwards)		
Check any oil leak	(
Clean the dirt, weeds, oil pollution, keep tidy	(
Remove breakdown	(
Adjust control assembly	(
Tightening belt						(
Gear and bearing					(

Crankcase Cover



SL-No	KK-No	KK-Name	Qty
1	E5-01	Crankcase cover	1
2	E5-02	Oil Gauge	1
3	E5-03	Oil Plug assembly	1
4	E5-04	seal-oil gauge	2
5	E5-05	Gasket crankcase	1
6	E5-06	Set pin 8X14	2
7	E5-07	Oil Seal 25x41.25x6	1
8	E5-08	Ball Bearing 6205	1
9	E5-09	Bolt M8 x 30	6

SL-No	KK-No	KK-Name	Qty
1	E4-01	Crankcase Body	1
2	E4-02	O-ring 14mm	1
3	E4-03	Drain bolt	2
4	E4-04	N/A	1
5	E4-05	Sway bar	1
6	E4-06	N/A	1
7	E4-07	Split Clip	1
8	E4-08	Washer Drain bolt	2
9	E4-09	N/A	1
10	E4-10	Centrifugal gear Parts	1
11	E4-11	N/A	1
12	E4-12	Plain washer 6mm	2
13	E4-13	N/A	2
14	E4-14	N/A	1
15	E4-15	N/A	2
16	E4-16	Oil sensor Assy	1
17	E4-17	Oil seal crankcase (25*41.25*6)	1
18	E4-18	Ball Bearing 6205	1
19	E4-19	Bolt M6 x 14	2
20	E4-20	Nut M10	1

Storage

Never store the machine with petrol in the fuel tank in a confined area with bad ventilation. Petrol fumes could reach open flames, sparks and cigarettes etc. If the machine is to be stored for a longer period than 30 days, the following methods are recommended.

1. Empty the fuel tank.
2. Start the engine and let it run until it stops due to lack of fuel.
3. Change the engine oil if it has not been done for 3 months.
4. Remove the spark plug and empty a little engine oil (about 30 ml) in the hole. Crank the engine a couple of times. Screw back the spark plug.
5. Clean the whole machine thoroughly.
6. Lubricate all the parts as shown in LUBRICATING above.
7. Inspect the machine for damage, repair if necessary.
8. Touch up any paint damage.
9. Rust protection to the metal surfaces.
10. Store the machine indoors if possible.

DEBUGGING METHOD OF POWER TILLER

Debugging method of mesh of bevel gear

When the abnormal transmission of mesh of bevel gear of sound is confirmed, stop the machine and check as stipulated below:

1. Clearance adjustment of mesh of angel gear in gearbox (See Figure 10)

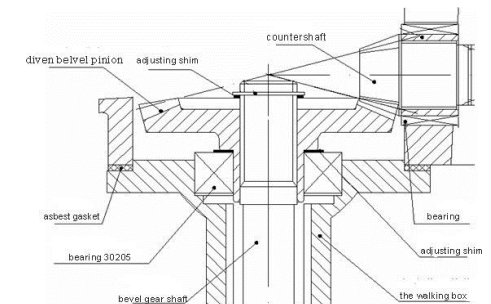
① When lateral clearance of mesh of the gear

$\Delta < 0.05\text{mm}$, we should put some vulcanized paper to enlarge the clearance between the gearbox and the traveling box.

② When lateral clearance of mesh of the gear

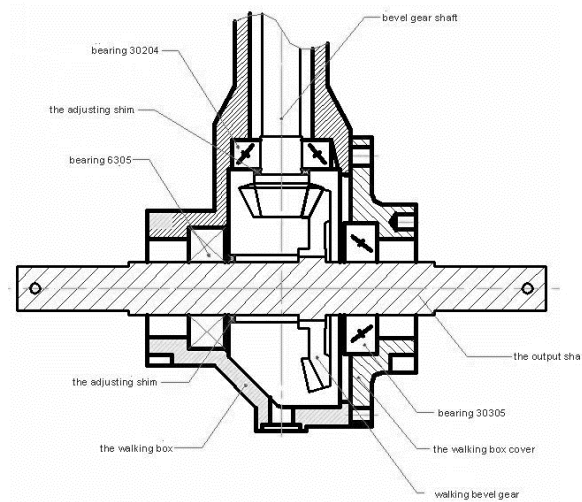
$\Delta > 0.3\text{mm}$, we should reduce the clearance to 0.05-0.10 mm between the bearings and gear II shaft

2. Clearance adjustment of mesh of the gear in the running case. (See Figure 11)
- When lateral clearance of mesh of the gear

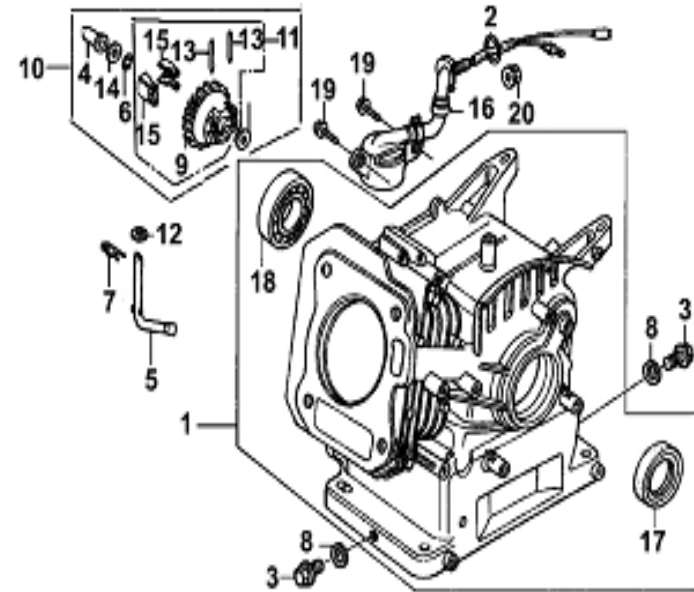


$\Delta < 0.05\text{mm}$, we should increase adjustment pad by 0.2-0.3mm to enlarge the clearance, and change vulcanized paper board and adjustment pad.

3. To ensure the axial clearance of the gear II is 0.05-0.15mm. When lateral clearance of mesh of the gear $\Delta > 0.3\text{mm}$, we should reduce adjustment pad I, meanwhile the axial clearance of gear II is 0.05-0.15mm, or increase the adjustment pad II, meanwhile ensure the axial clearance of gear I is 0.05-0.15mm.



Crankcase Assembly



SL-No	KK-No	KK-Name	Qty
9	E3-09	Air duck/Pipe	1
10	E3-10	Stud Intake Port M6 x 113	2
11	E3-11	Stud Exhaust Port M8 x 32	2
12	E3-12	Set pin 10x14	2
13	E3-13	Bolt M6x12	4
14	E3-14	Bolt M8 x 60,	4

TROUBLESHOOTING

Clutch's faults and methods

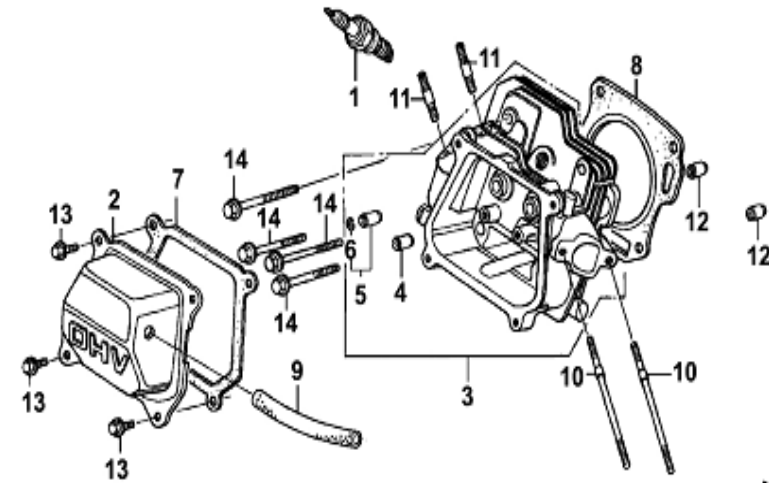
Phenomenon	Reasons	Methods
Clutch failure	Failure of clutch handle bar	Fix or replace
	Failure of clutch cables	Change
	Shifting fork not on the position	Readjustment or replace
	Drop of shift shaft, arm set	Fix or replace
	Break of shift fork	Replace
	□spring failure	Replace
Slip(loose the clutch handle bar, the engine works well, but the transmission slow-turning or stop working)	□spring fatigue failure	Replace
	Shift shaft turning ineffective, which make the shifting fork not on the right place	Clean the surface of locating shaft and shuffle disc
	Clutch cable maladjustment	Readjust the clutch cable

Gearbox's faults and methods

Symptom	Cause	Terms of settlement
Failure of fast, slow and neutral shift		Dismount the bolts, keys cover at the back of the main shaft, screw the round nuts tight, then fix back the bolts and keys cover and screw them tight
	Bolts and nuts for the main shaft are loose	
Failure to shift to the right position	Excess abrasion of puller	Replace the puller
	Driving loose angle gear is	Tighten the round nuts
	Excess abrasion of the upper hole in the connection piece of support arm	Replace the support arm assembly
	Positioning spring inside the main shaft does not function	Replace
The reversing shaft is loose	Main shaft is moving ,the bolts for tightening the cover for the rear of the gear-box body are loose	Screw the bolts tight
	Rear bolts of reversing shaft are loose	Screw the reversing shaft
	The matching between reversing shaft and gear-box body is too	Replace
Too much noise from the gears	Deformation and bend of the angle gear and reversing shaft	Replace

ENGINE PARTS DIAGRAM & LIST

Cylinder Head



SL-No	KK-No	KK-Name	Qty
1	E3-01	Spark plug	1
2	E3-02	Cylinder head cover	1
3	E3-03	Cylinder head Assy	1
4	E3-04	In. valve guide	1
5	E3-05	Ex. valve guide	1
6	E3-06	Valve guide clip	1
7	E3-07	Gasket Cylinder head cover	1
8	E3-08	Gasket Cylinder head	1

STORAGE

If the engine is not used for a long time, do the necessary maintenance before its storage.

- Firstly, take off the fuel tank, drain out all fuel, and clean the dirt and water inside the tank. Open the fuel cock, unscrew the drain plug at the bottom of carburetor, drain out fuel in carburetor thoroughly, and then tighten the drain plug.
- Secondly, unscrew the drain plug at the bottom of the crankcase and drain out the lubricant oil in the crankcase thoroughly, then tighten the drain plug.
- Finally, clean the surface of the engine with clean cloth, remove the dirt and dust etc. Then store the engine in a well-ventilated, dirt-free place.

TRANSPORTATION

- Contact with the hot engine or exhaust system can cause serious burns or fires. Allow the engine to cool down before transporting or storing the engine.
- During transport of the engine, turn the engine switch and the fuel valve to OFF. Keep the engine cool.

TROUBLESHOOTING

1. The Engine Can't Start

- Have the engine checked if it is hard to or cannot be started.
- Firstly, check the fuel level of the fuel tank. Turn fuel valve to (2), Fuel should flow from the drain when the fuel valve is turned ON. Tighten the drain plug. (Refer to starting of the engine)

2. Spark Plug

Check the spark plug. Remove the spark plug cap and clean any dirt around it. If the engine still cannot be started after repeating several times, please see the authorized dealer. Users are not allowed to dismantle or reassemble the unit by themselves.

3. Not Enough Power

- Check the air-cleaners. Please refer the maintenance inspection book to clear the air cleaner.
- Check the fuel. Please strain out the gasoline in fuel tank and in carburetor, and fill in new gasoline.
- For any other trouble, please contact our dealer.

	Too much lateral clearance due to excess abrasion of gears		Replace the gears
	The matching between bevel gear and reversing shaft and gear-box body is too loose		Replace
	Deformation of shift bar brings about interference when you shift	Adjust the shift bar or Replace it	Adjust the shift bar or Replace it
	Abrasion of reversing fork	Re-adjust the cable of reversing shift	Re-adjust the cable of reversing shift
	Malfunction of reversing Replace the reversing fork		
Failure to shift the	cable Replace the cable		
reversing shift to the right position	the reversing shaft is loose		Screw the bolts tight at the back of the reversing shaft
	The reversing fork is blocked to a standstill		Clean the combined face between reversing fork and reversing pushing plate to make the fork move freely
	The loosening of reversing shaft makes the gear be blocked to a standstill		Screw the bolts tight at the back of the reversing shaft.

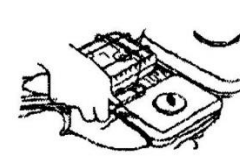
	Malfunction of spring of the reversing shaft	Replace the spring
The reversing gears do not reset	The reversing shaft is bent and deformed	Replace the reversing shaft

Faults and methods of walking system

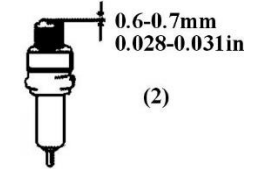
Phenomenon	Reasons	Methods
Gear's noise too loud	excessive wear or wrong fix	Reassemble or replace
Rotational hairpin of gear	Wrong assembling	Reassemble
Excessive fever	Too little lubricating oil	Add oil as per demands
Oil leak of output shaft sleeve cylindrical surface	Oil seal is damaged	Change oil seal
Serious oil leak of output shaft sleeve	Sleeve fracture	Replace
Oil leak of oil drain	O-rings damaged	Change
	Bolt loose	Tightening
Oil leak of crankcase	Crankcase has micro loose hole	Welding or priming

Other failures

Phenomenon	Reasons	Methods
Break-in of blades	Plough into rock or other flip	Replace it, and pay attention to avoid crash with hard objects like stone
Control cable break-in	Long-term wearing	Replace

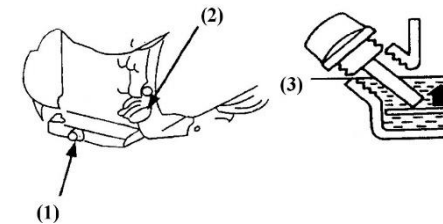


(1) Dismantle Spark Plug



(2) Adjust Clearance

4. Clean the fuel tank and filter when working time reaches 100hrs: Remove the fuel cover, drop out filter, and wash it with brush slightly. Remove fuel tank, clean the fouling and water inside fuel tank. Reinstall fuel tank, place filter from fill-in hole, filling the clean fuel to red line level.



1) Drain plug

2) Engine switch

3) Lower level

Check aging of fuel pipe every 2 years. If ageing, hardening, and cracking is detected, have it replaced. Tighten the joints, and check leakage.

Before storing the unit for an extended period:

- Make sure the storage area is free of excessive humidity and dust.
- Service according to the table below.

Storage Time	Recommended Service Procedure to Prevent Hard Starting
Less than 1 month	No preparation required
1 to 2 months	Fill with fresh gasoline and add gasoline conditioner
2 months to 1 year	<ul style="list-style-type: none"> Fill with fresh gasoline and add gasoline conditioner Drain the carburetor float bowl Drain the fuel sediment cup

- Fuel vapors are extremely flammable and may ignite after the engine has started. Make sure that any fuel spillage has been wiped off before starting the engine.
- Avoid skin coming in contact with gasoline for a long time, avoid breathing in gasoline vapors. Keep children away from them.

NOTE:

Fuel can damage paint and plastics. Be careful when refueling. Damage caused by spilling fuel is not covered under warranty.

MAINTENANCE

Do periodic maintenance to keep the engine in good condition. Always follow the inspection and maintenance recommendation and schedules given in this manual.

! WARNING:

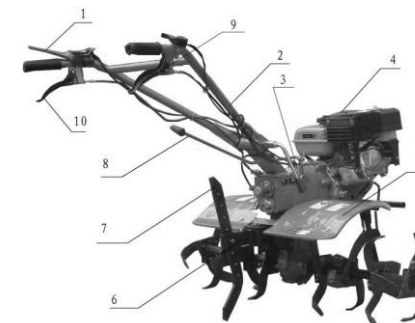
Stop the engine before doing any maintenance work. If the engine must be operated, provide adequate ventilation. Breathing in exhaust can cause loss of consciousness and even lead to death.

Everyday Maintenance:

- Air cleaner:** A dirty air cleaner will restrict air flow into the carburetor. To prevent carburetor malfunction, service the air cleaner regularly. Service more frequently when operating the generator in extremely dusty areas.
 - Check air cleaner core, get rid of fouling, and keep the core clean.
 - Check bolts, fasten the loose ones.
 - Check whether lubricant oil level is within the limits.
- Clean the core after 25hrs of engine run
- Clean carbon fouling of the spark plugs after working up to 50hrs. Check the clearance, and adjust the gap to 0.6-0.7mm (see figure 4-1). Check radiator, and clean fouling among radiators.
 - Drain the oil while the engine is warm to assure rapid and complete draining.
 - Remove the drain plug and sealing washer, remove the oil filler cap, and drain the oil.
 - Reinstall the drain plug and sealing washer. Tighten the plug securely.
 - Refill with the recommended oil and check the oil level.

PRODUCTS FEATURES

- Emergency power cut off devices
- Handle bar
- Gear box
- 170F gasoline engine
- Fender
- Trailer body
- Drag strut
- Gear lever
- Reverse gear handle
- Clutch handle



MACHINE LIST FOR MATCHING

Attached Tools

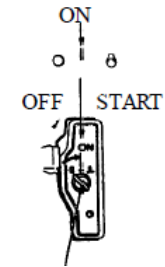
Series	Name	Unit	Application
1	Dry field blades	Set	Dry-land cultivation
2	Paddy field wheel	Set	Paddy field cultivation
3	2 piece-4 unit anti-wind knife	Set	Wetland farming with too much grass
4	3 piece-4 unit anti-wind knife	Set	
5	Efficient paddy field wheel	Set	Paddy field cultivation
6	Flood composite knife	Set	Dry-land, paddy field cultivation
7	Crawl plate	Set	Used for climbing

Easily Damaged Parts List

Series	Parts	Work Site	Series	Parts	Work Site
1	Spark Plug	Engine	9	The Filter Elements	Engine
2	Stop Switch	Engine	10	Kinds Of Spring	Engine Gear Box
3	Oil Plug	Engine	11	Paper Pad	Engine Gear Box
4	Piston Roll	Engine	12	Oil Seal, Oil Cover, O-ring	Engine Gear Box
5	Oil Tube	Engine	13	Bearing	Engine Gear Box
6	Connecting Rod Bearing Shell	Engine	14	Chain	Gear Box
7	Inlet Exhaust Valve Rocker Arm	Engine	15	Kinds Of Cable	Machine Frame
8	Start Pull Plate	Engine	16	Pin Roll, Cotter Pin	Cylinder

Electrical Starting:

Turn the engine switch to START position and hold a while until the engine started

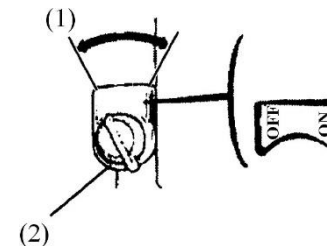


ENGINE SWITCH

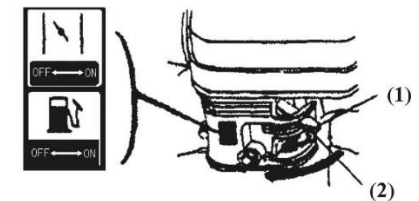
NOTE: Restrict the starting time within 5 seconds to avoid engine damage. If engine cannot be started, release starter knob, retry after 10 seconds.

STOPPING THE ENGINE

Adjust throttle to proper position. Reduce engine speed, close the choke. Turn engine switch to OFF position.



(1) Throttle knob



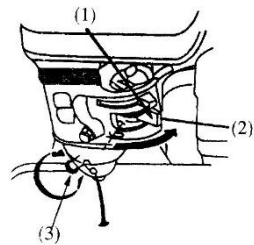
(2) Throttle is at OFF

! DANGER:

- Gasoline is extremely flammable and explosive under certain conditions.
- Refuel in well-ventilated places with the engine stopped. Do not smoke or allow flames or sparks near the places where the engine is refueled, or gasoline is stored.
- Do not add fuel over the shoulder of strainer. After fueling, tighten the tank cover.

STARTING THE ENGINE

- Turn the fuel valve to ON position, unscrew the drain plug on carburetor bottom, and fasten the drain plug until oil spills out.
- Pull the choke rod to the CLOSE position. Adjust throttle to proper position. Pull the starter grip lightly until resistance is felt, then pull it rapidly



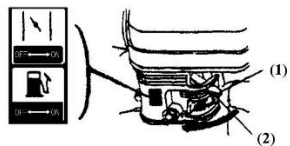
(1) Fuel Valve

(2) Start Level

(3) Drain Plug

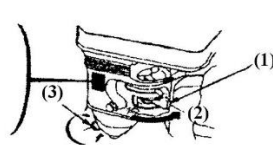
NOTE:

- Do not allow the starter grip to snap back against the engine. Return it gently to prevent damage to the starter.
- Once the engine got started, let it run for 1~3 minutes at idle speed, check whether it is balanced, cracked, then pull the throttle to open position, adjust choke rod to OPEN.



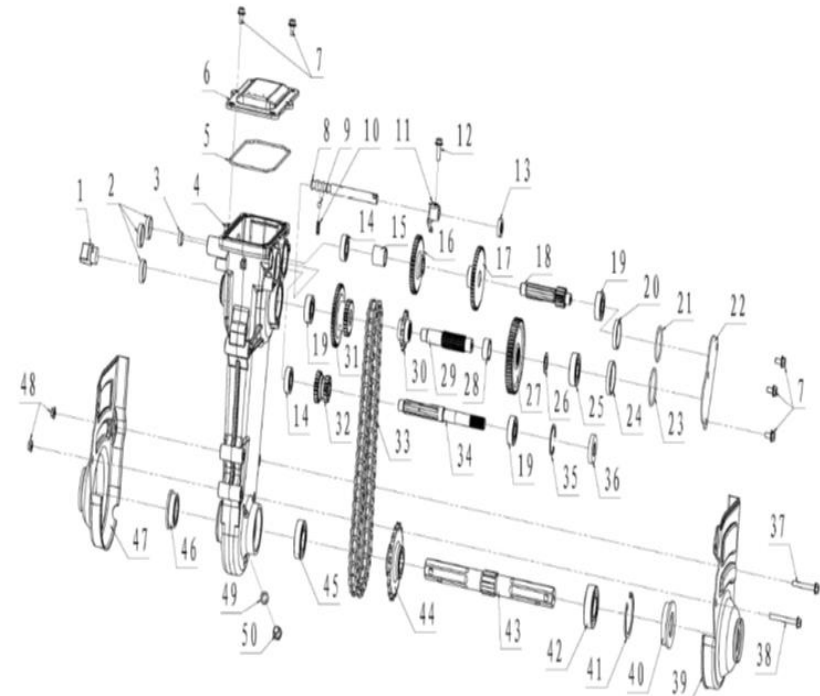
(1) Auto-Throttle

(2) Off Position



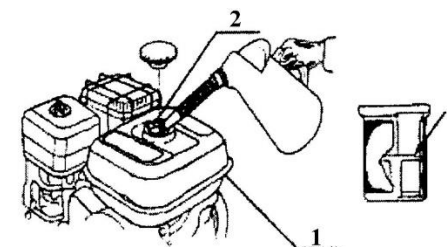
(3) Starter Knob

PARTS DIAGRAM & LIST-BODY-(KK-IC-200P)



KK-PART NO	KK-PART NAME	Qty
G/B 1-01	Oil Hole Plug	1
G/B 1-02	Oil Plug A	3
G/B 1-03	Oil Plug B	1
G/B 1-04	Gear Box Housing	1
G/B 1-05	Seal Ring Of Top Cover	1
G/B 1-06	Top cover Comp Of Gear Box	1
G/B 1-07	Bolt M6x12	5

KK-PART NO	KK-PART NAME	Qty
G/B 1-08	Shift Fork Shaft	1
G/B 1-09	Steel Ball SΦ 6.35	1
G/B 1-10	Spring	1
G/B 1-11	Shift Fork	1
G/B 1-12	Bolt M6×20	1
G/B 1-13	Oil Seal 12×22×6	1
G/B 1-14	Bearing 6002	2
G/B 1-15	Bush F1	1
G/B 1-16	The 2nd Driven Gear	1
G/B 1-17	The 1st Driven Gear	1
G/B 1-18	Counter Shaft	1
G/B 1-19	Bearing 6202	3
G/B 1-20	Bush C	1
G/B 1-21	O-ring 39×2.6	1
G/B 1-22	Oil Stopper	1
G/B 1-23	O-ring 43.5×2.6	1
G/B 1-24	Bush D	1
G/B 1-25	Bearing 6203	1
G/B 1-26	Backup Plate	1
G/B 1-27	Driving Gear	1
G/B 1-28	Bush I	1
G/B 1-29	Driving Sprocket Shaft	1
G/B 1-30	Driving Sprocket	1
G/B 1-31	Double reverse gear	1
G/B 1-32	Two-throw Gear	1
G/B 1-33	Chain(50 Joints)	1

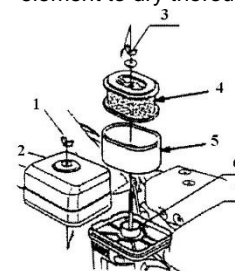


(1) Fuel tank (2) Fill in hole (3) Red line level

Air cleaner

The air cleaner is a dry type including paper element and foam element.

- Remove the clip and dismantle the air cleaner housing or remove the wing nuts and air cleaner cover.
- Wash the element in solution of household detergent and warm water, then rinse thoroughly, or wash in nonflammable or high flash point solvent. Allow the element to dry thoroughly



- 1) Butterfly nut
- 2) Air cleaner cover
- 3) Butterfly nut
- 4) Paper element
- 5) Foam element
- 6) Seal washer
- 7) Silencer plate

! WARNING:

Do not run the engine without air cleaner.

! DANGER

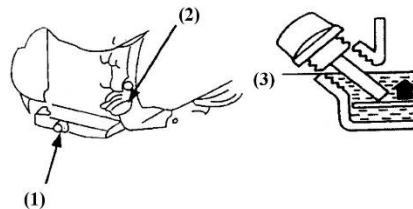
Using gasoline or flammable solvent to clean the filter element can cause a fire or explosion.

! CAUTION:

Do not run the engine without air cleaner core, otherwise dust and/or other foreign matters may get into the engine through carburetor, and results in rapid engine worn-out.

Engine oil alert system (optional function):

The oil alert system is designed to prevent engine damage caused by insufficient oil in the crankcase. When the oil level in the crankcase falls below the safe limit, the oil alert system will automatically stop the engine even if the engine switch remains at the ON position. If the engine stops and cannot be restarted, check the engine oil level before troubleshooting in other areas.



(1) Drain plug

(2) Engine switch

(3) Lower level

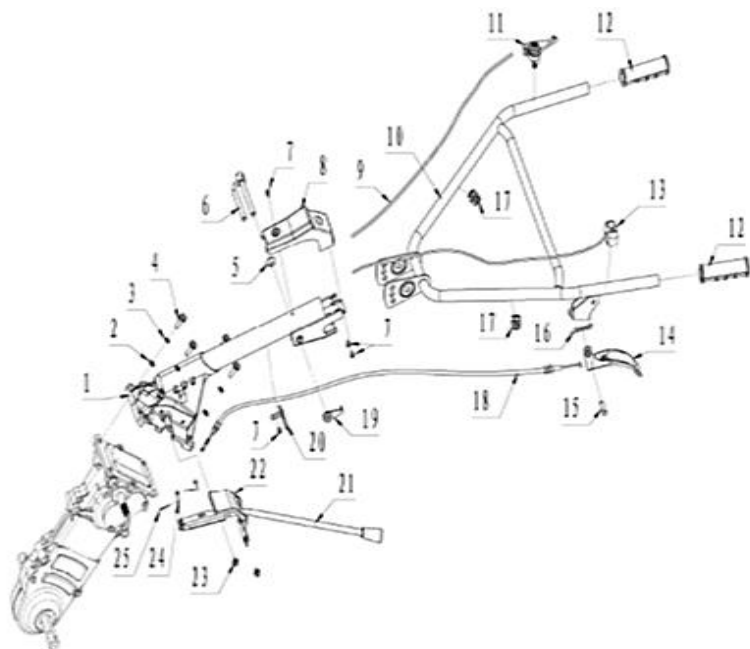
Fuel level

- Check the fuel gauge, and refill the tank if the fuel level is low. Do not fill above the shoulder of the fuel strainer. The fuel 90# gasoline is recommended.
- Unleaded gasoline produces less engine and spark plug fouling and extends exhaust system life.
- Never use stale or contaminated gasoline or oil/gasoline mixture. Avoid dirt, rubbish, and water from getting into the fuel tank.
- If spark knock or pinging occurs at a steady engine speed under normal load, change brands of gasoline. If spark knock or pinging persists, see an authorized dealer.

! WARNING:

- Running the engine with persistent spark knock or pinging can cause engine damage.
- If persistent spark knocks or pinging is caused by improper usage of the unit, the Distributor's Limited Warranty does not cover parts damaged by that.

KK-PART NO	KK-PART NAME	Qty
G/B 1-34	Main Shaft	1
G/B 1-35	Circlip 35	1
G/B 1-36	Oil Seal 16x35x7	1
G/B 1-37	Bolt M6x45	1
G/B 1-38	Bolt M6x55	1
G/B 1-39	Gear Box Left Cover	1
G/B 1-40	Oil Seal A	1
G/B 1-41	Circlip 52	1
G/B 1-42	Bearing 6205	1
G/B 1-43	Driven Sprocket Shaft	1
G/B 1-44	Driven Sprocket	1
G/B 1-45	Bearing 6005	1
G/B 1-46	Oil Seal B	1
G/B 1-47	Gear Box Right Cover	1
G/B 1-48	Nut M6	2
G/B 1-49	Washer 10x16x2 (Drain Bolt)	1
G/B 1-50	Drain Bolt M10x1.25x12	1



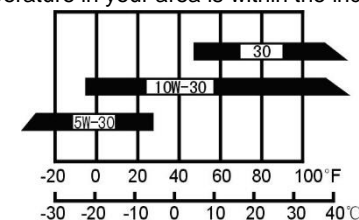
KK-PART NO	KK-PART NAME	Qty
G/B 2-01	Standing pipe Jointing	1
G/B 2-02	Flat Washer 8	4
G/B 2-03	Spring Washer 8	4
G/B 2-04	Bolt M8x25	4
G/B 2-05	Wimble Bush	1
G/B 2-06	Handle Adjuster Bolt	1
G/B 2-07	Screw ST 4.8x12	4
G/B 2-08	Inlet Cover	1
G/B 2-09	Throttle Cable Comp	1
G/B 2-10	Handle Comp	1
G/B 2-11	Throttle Handlebar	1

PRE-OPERATION CHECKS

Check the oil level

Lubricating oil:

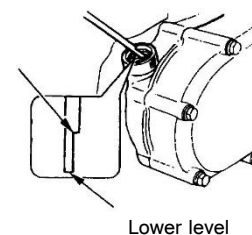
- Engine lubricant oil is a major factor affecting engine performance and service life.
- The use of the lubricating oil free of cleaning agent or the lubricating oil for the two-stroke engine will shorten the life of the gasoline engine.
- The operating temperature range recommended for the gasoline engine is -5°C~40°C.
- Use 4-stroke motor lubricant oil. 20W-40 is recommended in general, at all temperature use. Other viscosities shown in the chart may be used when the average temperature in your area is within the indicated range.



Ambient temperature

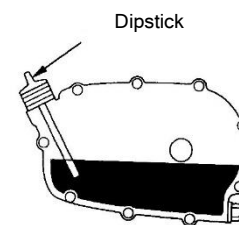
- Before checking engine lubricant oil, place the engine on level surface
- Turn out the oil filler cap and clean the dipstick with a clean cloth.
- Insert the dipstick back into the oil filler hole without turning it in.
- If oil level is below the lower mark of the dipstick, fill oil to the upper level of the dipstick.
- Reinstall the oil filler cap properly.

Upper level



Lower level

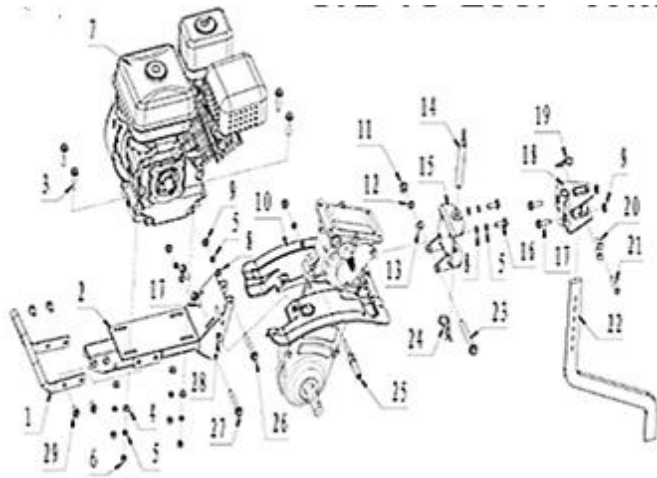
Dipstick



SAFETY INSTRUCTIONS

1. Please perform some pre-operation checks before operation to avoid human injury and equipment damage.
2. Keep the engine in good, ventilated places at least 1 meter away from buildings and other equipment's during operation and keep the flammable substances away from the engine to avoid fire.
3. Keep children and pets away from the operation area.
4. Make sure that the person who operates the engine receives proper instruction.
5. Keep the flammable substances (gasoline, matches) away from the operating engine.
6. As gasoline is extremely flammable and explosive under certain conditions, please refuel in a well-ventilated area with the engine stopped.
7. Do not fill above the shoulder of the fuel strainer.
8. Make sure the fuel cover is tightened.
9. Make sure that any spilled fuel has been wiped off before starting the engine.
10. Do not smoke or allow flames or sparks where the engine is refueled or where gasoline is stored.
11. Exhaust contains poisonous carbon monoxide, a colorless and odorless gas. Breathing exhaust can cause loss of consciousness and may lead to death. Do not operate the engine without good ventilation or in enclosed room.
12. If you run the engine in an area that is confined, or even partially enclosed, the air you breathe could contain a dangerous amount of exhaust gas. Provide adequate ventilation so as to keep exhaust gas from accumulation.
13. Place the engine on flat (level) surface, tilting angle of the engine should not be more than 20°, otherwise it will lead to fuel spilling out.
14. Do not cover the engine so as to avoid fire occurrence.
15. The muffler becomes very hot during and immediately after operation. Be careful not to touch the muffler while it is hot. Let the engine cool down before storing the engine indoor.

KK-PART NO	KK-PART NAME	Qty
G/B 2-12	Grip (Handle)	1
G/B 2-13	Shut Down Switch Comp	1
G/B 2-14	Clutch Handle	1
G/B 2-15	Pin 8x28	1
G/B 2-16	Clip F	1
G/B 2-17	Clip φ 22	2
G/B 2-18	Clutch Cable	1
G/B 2-19	Handle Adjuster Clamp	1
G/B 2-20	Loop	1
G/B 2-21	Shift Lever	1
G/B 2-22	Gear Position Indication Stand	1
G/B 2-23	Bolt M6x10	2
G/B 2-24	Pin 5 X 25	2
G/B 2-25	Clip 1.5 X 20	2



KK-PART NO	KK-PART NAME	Qty
G/B 3-01	Handrail	1
G/B 3-02	Engine Bracket	1
G/B 3-03	Bolt M8x40	4
G/B 3-04	Flat Washer 8x18x3	4
G/B 3-05	Spring Washer 8	9
G/B 3-06	Nut M8	4
G/B 3-07	Petrol Engine	1
G/B 3-08	Flat Washer 8	5
G/B 3-09	Nut M8	5
G/B 3-10	Inner Fender	1
G/B 3-11	Nut M10	1
G/B 3-12	Spring Washer 10	1
G/B 3-13	Flat Washer 10	1
G/B 3-14	Pin Spindle	1
G/B 3-15	Hinge frame combination	1

USER MANUAL



BEFORE GETTING STARTED

Thank you for your purchase and use of our products. In order to avoid accidents or injury, **please read this manual carefully** before using the machine. After reading, preserve it for further reference. This manual is a part of the gasoline engine and should be transferred when the machine is resold.

SAFETY LABELS



DANGER

Indicates a hazard, if not avoided, can result in human injury or death.



WARNING

Indicates a hazard, if not avoided, could result in human injury and/or property damage.

CAUTION

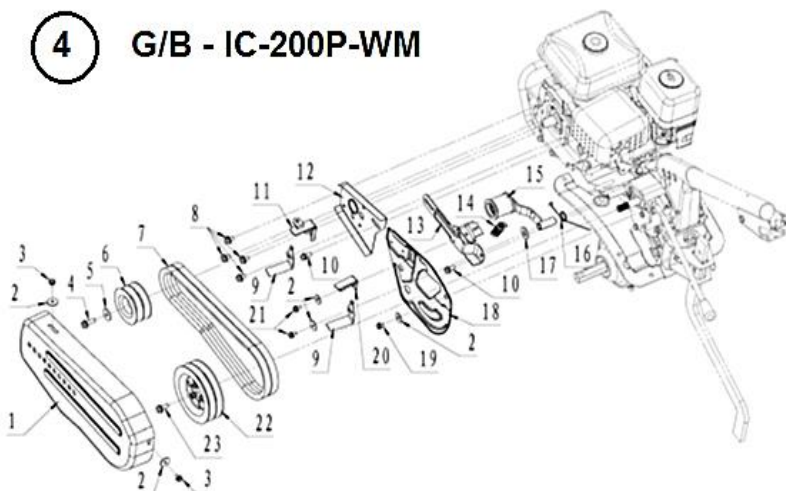


Indicates a hazard, if not avoided, might result in slight injury and/or property damage.

Please read and understand this owner's manual before operation of the engine to avoid accidents by familiarizing yourself with your engine's controls and safe operation procedures.

29	72205-TA5A-010A	β PIN φ3×20×60	pcs	3
30	B5783-06KG-016A	Hexagon bolt	pcs	4
31	B6177-1-06KG-000A	Hexagon nut M6	pcs	4
32	72110-T90A-04B5	Bumper ASSY	pc	1
33	B6170-10LG-000A	Nut M10	pcs	2
34	B93-100G-000C	WASHER SPRING 10	pcs	2
35	B882-0100-040A	PIN8×40	pcs	2
36	72205-TA5A-000A	β PIN φ3×20×60	pcs	2
37	B6170-08LG-000A	Hexagon nut M8	pcs	4
38	B93-080G-000A	spring washer φ8	pcs	4
39	B95-080G-000A	flat washer φ8	pcs	4
40	B5789-10KG-040A	Hexagon bolt M10*P1.5*40	pcs	2
41	B95-100G-000A	WASHER 10	pcs	4
42	B16674-1-08LG-040A	Hexagon bolt M8*P1.25*40	pcs	4
43	75110-TA5A-K000	left wheel assy	pcs	1
44	74122-T90A-10RQ	front fender bracket(left)	pc	1
45	74112-T90A-00RP	left fender		

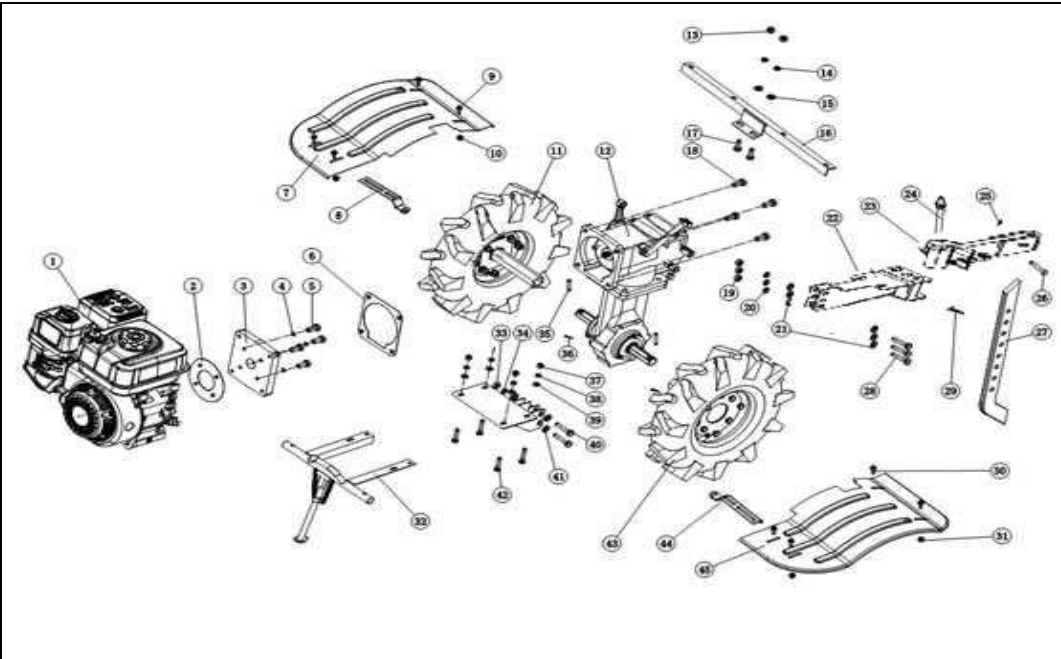
KK-PART NO	KK-PART NAME	Qty
G/B 3-16	Bolt M8×25	2
G/B 3-17	Bolt M8×30	4
G/B 3-18	Deep Furrowing Connecting Set	1
G/B 3-19	Garter Spring B	1
G/B 3-20	Bolt M8×20	2
G/B 3-21	Pin Spindle 8×43	1
G/B 3-22	Deep Furrowing Resistance part	1
G/B 3-23	Bolt M10×90	1
G/B 3-24	Garter Spring C	1
G/B 3-25	Pin (Tensioner)	1
G/B 3-26	Bolt M8X 70	1
G/B 3-27	Bolt M8X 65	1
G/B 3-28	Bush 8X12X12	2
G/B 3-29	Bolt M8X 16	4



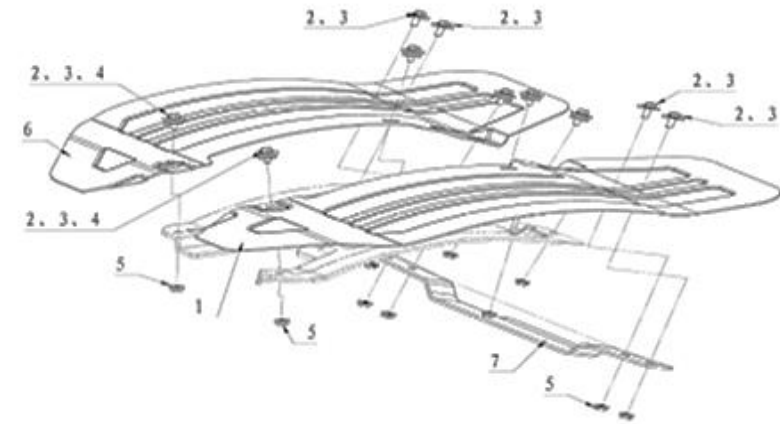
KK-PART NO	KK-PART NAME	Qty
G/B 4-01	Belt Protector	1
G/B 4-02	Washer 6x22x2 Flat	5
G/B 4-03	Bolt M6x10	2
G/B 4-04	Bolt M8x25	1
G/B 4-05	Washer 8x28x3 Flat	1
G/B 4-06	Driving Pulley	1
G/B 4-07	V-belt	2
G/B 4-08	Bolt M8x12	4
G/B 4-09	V-belt Guard C	2
G/B 4-10	Bolt M8x16	2
G/B 4-11	V-belt Guard B	1
G/B 4-12	Driving Pulley Plate	1
G/B 4-13	Connecting Plate	1
G/B 4-14	Tensioner Spring	1
G/B 4-15	Tensioner Jointing	1
G/B 4-16	Torsion-bar Spring(Tensioner)	1
G/B 4-17	Washer Flat	1
G/B 4-18	Drive Pulley Plate	1
G/B 4-19	Bolt M6x10	1
G/B 4-20	V-belt Guard A	1
G/B 4-21	Bolt M6x12	2
G/B 4-22	Drive Pulley Comp	1
G/B 4-23	Bolt M6x20	1

8	74122-T90A-00RQ	front fender bracket(right)	pc	1
9	B5783-06KG-016A	Hexagon bolt M6*16	pcs	4
10	B6177-1-06KG-000A	Hexagon nut M6	pcs	4
11	75110-TA5A-L000	right wheel assy	pc	1
12	71000-T90A-60RQ	transmission case assy	pc	1
13	B6170-10LG-000A	Nut M10	pcs	2
14	B93-100G-000A	WASHER SPRING 10	pcs	2
15	B95-100G-000A	WASHER 10	pcs	2
16	74121-T90A-30B5	back fender bracket	pc	1
17	B5783-10MG-025A	Hexagon bolt	pcs	2
18	B5789-10KG-035A	Hexagon bolt M10*P1.5*35	pcs	2
	B5789-10KG-030A	Hexagon bolt M10*P1.5*30	pcs	2
19	B6170-10LG-000A	Nut M10	pcs	3
20	B93-100G-000A	WASHER SPRING 10	pcs	3
21	B95-100G-000A	WASHER 10	pcs	3
22	72201-TA0A-02B5	towed body	pc	1
23	72202-TA5A-12B5	connecting frame	pc	1
24	72203-TA5B-100C	PIN OF PULLEY COSRP	pcs	3
25	72205-TA5A-000A	β PIN φ3×20×60	pc	1
26	B882-0100-040A	PIN8x40	pc	1
27	72204-TA5A-00B5	DEEP FURROWING RESISTANCE PART (TYPE-L)	pc	1
28	B5789-10KG-045A	Hexagon bolt M10*P1.5*45	pcs	3

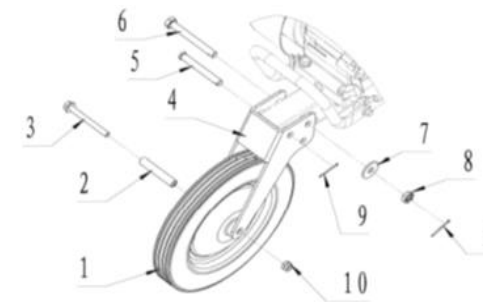
Filter Assembly



Series No.	Part Code	Unit	Quantity for One Unit	Quantity for One Unit
1	10000-E70F-D134	Gasoline Engine	pc	1
2	71004-T90A-1000	paper pad	pc	1
3	71001-T90A-00C9	plate flange	pc	1
4	B93-080G-000A	spring washer $\phi 8$	pcs	4
5	B70.1-08LG-025B	Hexagon screw M8*P1.25*25	pcs	4
6	71003-T90A-1000	paper pad	pc	1
7	74111-T90A-00RP	right fender	pc	1

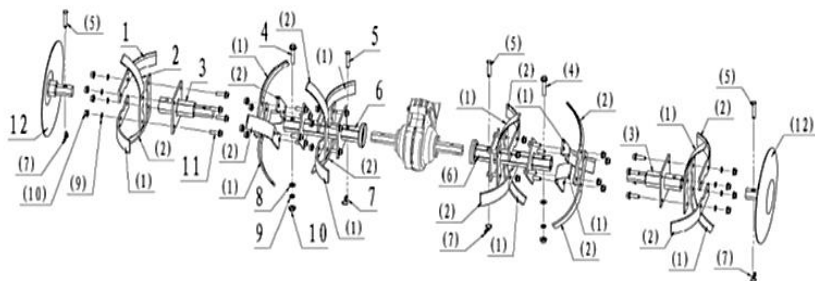


KK-PART NO	KK-PART NAME	Qty
G/B 5-01	Left Fender	1
G/B 5-02	Bolt M6x16	10
G/B 5-03	Washer 6x22x2	10
G/B 5-04	Rubber Sleeve	6
G/B 5-05	Nut M6	10
G/B 5-06	Right Fender	1
G/B 5-07	Connecting Plate	1



KK-PART NO	KK-PART NAME	Qty
G/B 6-01	Front Wheel	1
G/B 6-02	Sleeve (Front Wheel)	1
G/B 6-03	Bolt M8x75	1
G/B 6-04	Front Wheel Stand	1

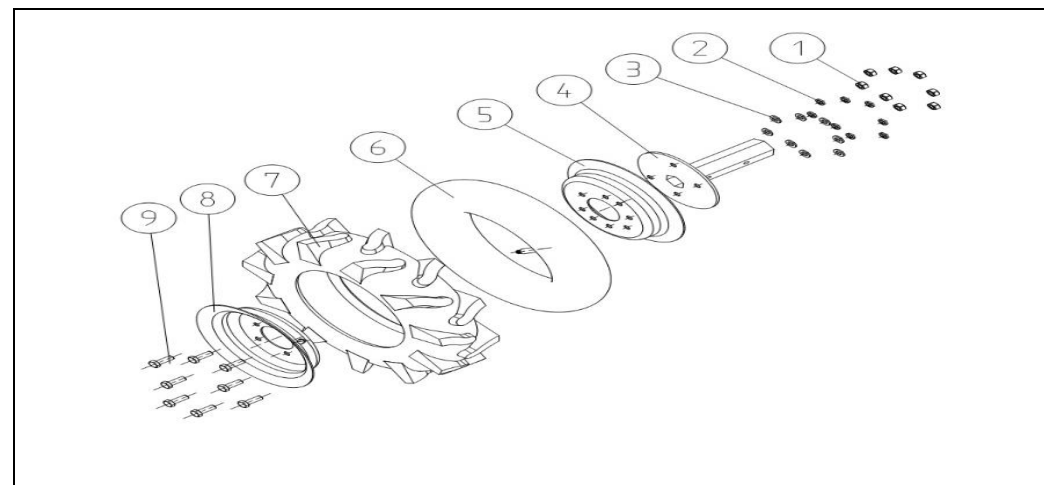
KK-PART NO	KK-PART NAME	Qty
G/B 6-05	Pin 10x75	1
G/B 6-06	Bolt M8x85	1
G/B 6-07	Washer 10 Flat	1
G/B 6-08	Nut M10	1
G/B 6-09	Cotter Pin 2x30	2
G/B 6-10	Nut M8	1



KK-PART NO	KK-PART NAME	Qty
G/B 7-01	Left Rotary Blade(DRY LAND)	12
G/B 7-01	Left Rotary Blade (WET LAND)	12
G/B 7-02	Right Rotary Blade(DRY LAND)	12
G/B 7-02	Right Rotary Blade (WET LAND)	12
G/B 7-03	Subsidiary Blade Holder Comp	2
G/B 7-04	Bolt M8x45	2
G/B 7-05	Pin Spindle 8x43	4
G/B 7-06	Primary Blade Holder Comp	2
G/B 7-07	Garter Spring B	4
G/B 7-08	Flat Washer 8	2
G/B 7-09	Spring Washer 8	26
G/B 7-10	Nut M8	26
G/B 7-11	Bolt M8 x 25	24
G/B 7-12	Side Disc	2

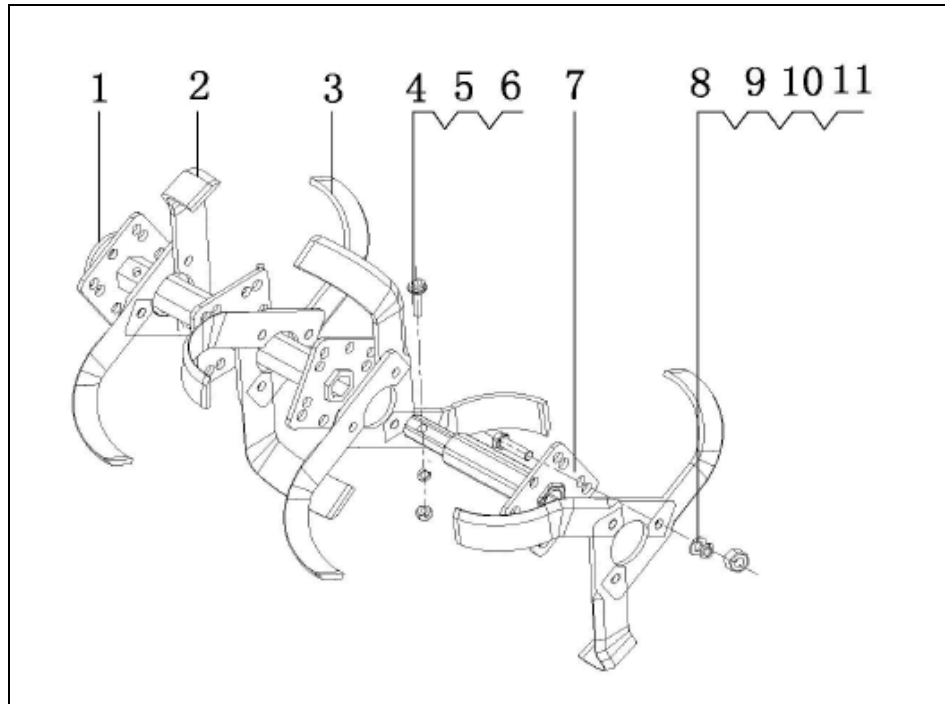
8	B5783-10MG-035A	Bolt M10x35	pcs	24
9	B93-100G-000A	Spring Washer10	pcs	24
10	B95-100G-000A	Washer10	pcs	24
11	B6170-10LG-000A	Nut M10	pcs	24

WHEEL ASSY

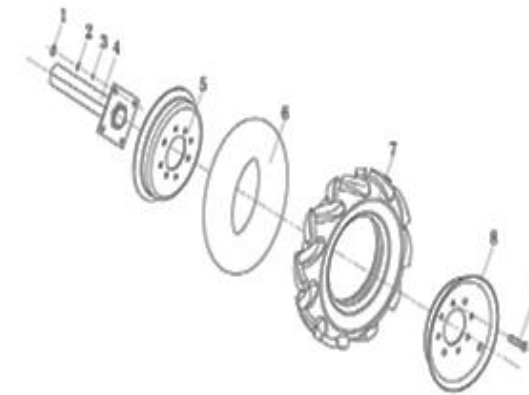


Series No.	Part Code	Name	Unit	Quantity for One Unit
1	B6170-10MG-000A	hexagon nut M10	pcs	8
2	B93-100G-000A	spring washer10	pcs	8
3	B95-100G-000A	flat washer 10	pcs	8
4	75115-TD5A-00B5	wheel shaft	pcs	2
5	75113-TA5A-10W2	inside wheel hub	pc	1
6	75112-TA5A-2000	Inner tube 4.00-10	pc	1
7	75111-TA5A-2000	outer tube 4.00-10	pc	1
8	75114-TA5A-10W2	outside wheel hub	pc	1
9	B5783-10MG-025A	Hexagon bolt M10x25	pcs	8

Blades Assembly

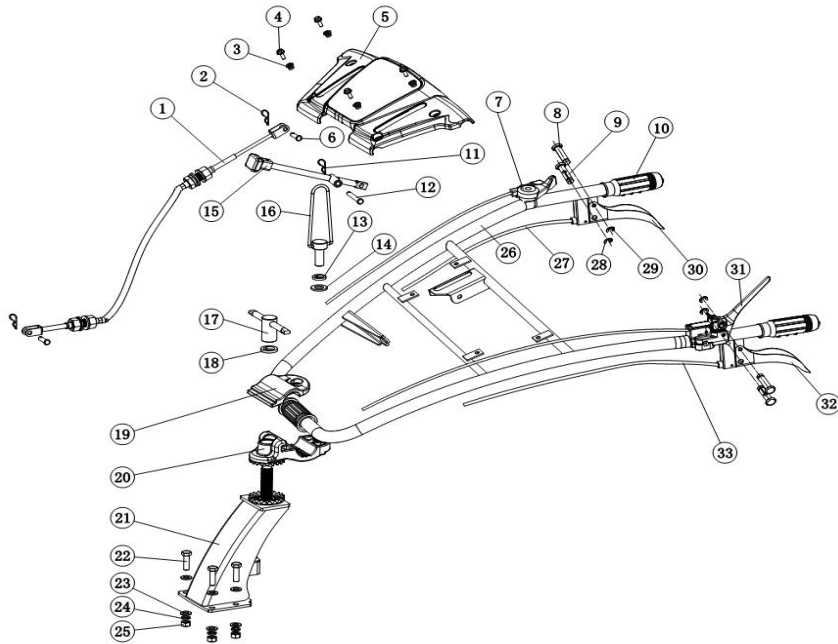


Series No.	Part Code	Name	Unit	Quantity for One Unit
1	79121-T90A-0000/79121-T90A-0100	Main tube	pcs	2
2	79124-TA5A-3000	Blade (R)	pcs	12
3	79123-TA5A-3000	Blade (L)	pcs	12
4	B5783-08MG-045A	Bolt M8x35	pc	1
5	B93-080G-000A	Spring Washer8	pc	1
6	B95-080G-000A	Washer8	pc	1
7	79122-T75A-0000	Counter tube	pcs	2



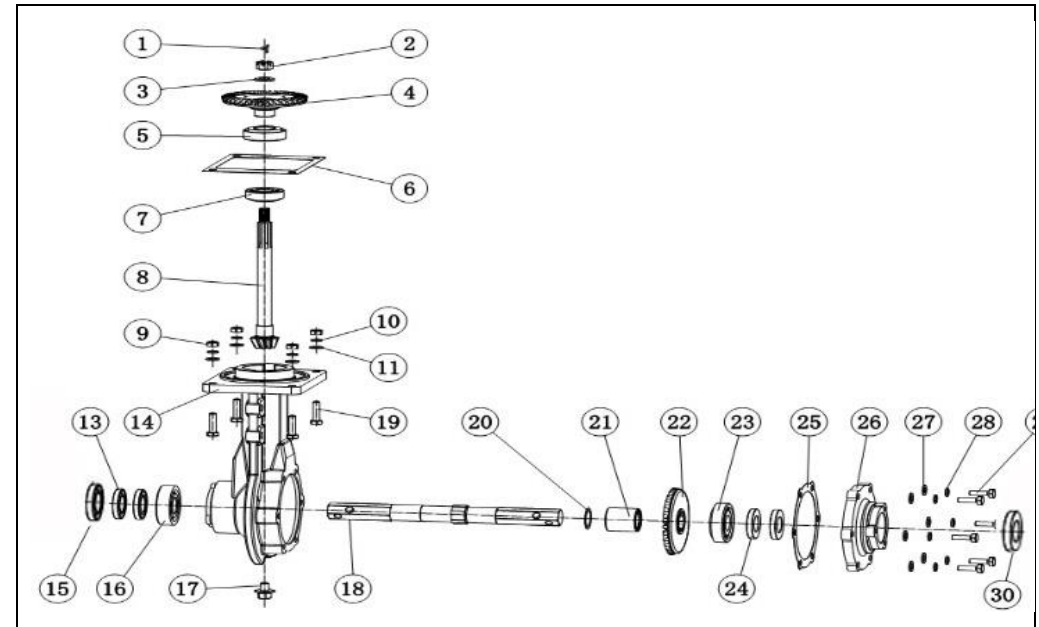
KK-PART NO	KK-PART NAME	Qty
G/B 8-01	Nut M10	8
G/B 8-02	Spring Washer10	8
G/B 8-03	Washer Flat 10	8
G/B 8-04	Wheel axle	1
G/B 8-05	Spoke(INSIDE)	1
G/B 8-06	Inner Tube	1
G/B 8-07	Outer Rubber Tyre 3.5-4	1
G/B 8-08	Spoke(OUTSIDE)	1
G/B 8-09	Bolt	4

PARTS DIAGRAM & HANDLE ASSY-(KK-IC-212P)



Series No.	Part Code	Name	Unit	Quantity for One Unit
1	73010-T90A-3000	clutch cable	pc	1
2	72205-TA5A-000A	β cotter pin $\phi 2 \times 9 \times 38$	pcs	2
3	B6177-1-06KG-000A	Hexagon nut M6	pcs	4
4	B5789-06KG-016A	Hexagon bolt M6*P1*16	pcs	4
5	73115-TA5A-11RW	toolbox	pc	1
6	B882-0080-025A	B pin spindle ($\Phi 8 \times 25$ /coloured zinc)	pcs	2
7	73104-T90A-4000	throttle switch	pcs	1
8	73113-TA5A-010C		pcs	2
9	73114-TA5A-010C		pcs	2

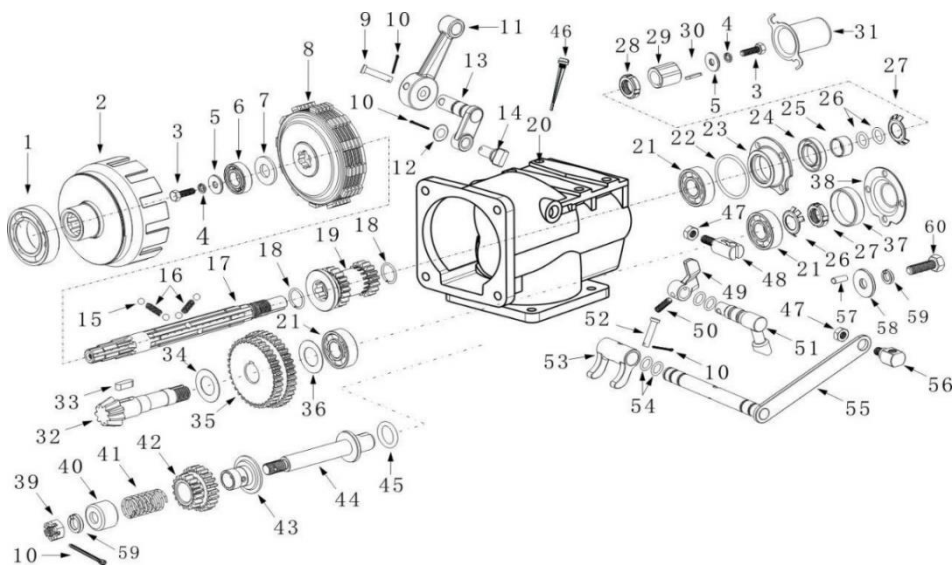
Transmission case Part



39	B6181-12NG-000A	Nut M12	pc	1
40	71134-TA5A-0000	Restrict cover, reverse gear	pc	1
41	71136-TA5A-000B	Spring seat, reverse gear	pc	1
42	71132-T90A-0000	Double gear, reverse gear	pc	1
43	71133-TA5A-0000	Pushing plate, reverse gear	pc	1
44	71131-TA5A-0000	Axes, reverse gear	pc	1
45	B3452.1-180C-0180	O-ring18x1.8	pc	1
46	11010-E68F-2000	Oil stick	pc	1
47	B6170-08LG-000A	Nut M8	pc	1
48	71105-TA0A-000A	Seat, reverse gear cable	pc	1
49	71152-T90A-000B	Revere gear fork	pc	1
50	B5780-05KJ-025A	bolt M5*P0.8*25	pc	1
51	71151-T90A-000A	Axes, ever gear fork	pc	1
52	B882-0060-025A	Pin6x25, clutch fork	pc	1
53	71162-T90A-000B	Clutch fork	pc	1
54	B3452.1-180C-0100	O ring $\Phi 1.8 \times \Phi 10$	pcs	2
55	71161-T90A-000A	Axes, clutch fork	pc	1
56	71163-T90A-000A	Seat, clutch cable	pc	1
57	B119.1-0050-0100	Pin A5x10	pc	1
58	B95-120G-000A	flat washer $\Phi 13.5 \times \Phi 24 \times 2.5$	pc	1
59	B93-120G-000A	Spring Washer12	pcs	2
60	B5782-12MJ-025A	bolt M12*25	pc	1

10	73002-TA5A-1000	grip sleeve	pcs	2
11	72205-TA5A-000A	β cotter pin $\phi 2 \times 9 \times 38$	pc	1
12	B882-0060-050A	B pin spindle ($\Phi 6 \times 50$ /coloured zinc)	pc	1
13	B93-160G-000C	Spring Washer	pc	1
14	B95-160G-000C	Flat Washer	pc	1
15	73001-T90A-050D	shift level	pc	1
	73002-T90A-2000	shift level grip sleeve	pc	1
16	73203-TA5A-200D	U clamp handlebar	pc	1
17	73203-TA5A-000D	T clamp handlebar assy	pc	1
18	B93-200G-000C	Spring Washer $\phi 20$	pc	1
19	73216-TA5A-10RQ	Pressing Plate (Up)	pc	1
20	73215-TA5A-00RP	Pressing Plate (Down)	pc	1
21	73201-T90C-10RP	handrail holder	pc	1
22	B5783-10MG-035A	Hexagon bolt M10*P1.5*35	pcs	4
23	B95-100G-000A	Flat Washer $\phi 10$	pcs	4
24	B93-100G-000A	Spring Washer $\phi 10$	pcs	4
25	B6170-10MG-000A	Hexagon nut M10	pcs	4
26	73101-T90C-11W2	Handlebar	pc	1
27	73139-T90C-3000	reverse gear cable	pc	1
28	B896-010-000B		pcs	2
29	B896-006-000B		pcs	2
30	73121-TA5A-00B5	reverse gear handle	pc	1
31	73130-T90A-1300	emergency stop device assy	pc	1
32	73111-TA5A-00B5	Clutch Shaft	pc	1
33	73112-T90A-3000	clutch cable	pc	1

Gear Shaft Diagram



Series No.	Part Code	English Name	Unit	Quantity for One Unit
1	B276-6007-00	Bearing6007	pc	1
2	71310-T90A-0000	Cover, clutch	pc	1
3	B5783-06KG-020A	Hexagon bolt M6*P1*20	pc	1
4	B862.2-060G-000B	locking washer	pc	1
5	B5287-060G-000A	flat washer Φ7	pc	1
6	B276-6202-00	bearing6202	pc	1
7	71109-155H-0000	Clutch washer	pc	1
8	71320-T90A-0000	Core comp, clutch	pc	1
9	B882-0060-040A	Pin6x40, Shift Rod	pc	1
10	B91-0016-020A	ClipΦ2	pc	1
11	71143-TA5A-000A	Sheath, Shift Rod	pc	1

12	B3452.1-180C-0100	O ring Φ1.8*Φ10	pcs	2
13	71141-TA5A-000A	Shift Axes	pc	1
14	71142-TA5A-000B	Shift fork	pc	1
15	B308-0600-0000	Steel ball Sφ6	pc	1
	71115-T90A-000B	Spring, principal axes	pc	1
17	71111-T90A-0000	Principal axes	pc	1
18	B895-2-0020-000B	steel ring φ20	pcs	2
19	71112-T90A-0000	Initiative gear	pc	1
20	71500-T90A-00RQ	Shift Gear box	pc	1
21	B276-6203-00	bearing6203	pc	1
22	B3452.1-180C-0400	O ring Φ1.8*Φ40	pc	1
23	71107-T90A-000A	main shaft gland	pc	1
24	B9877.1-020C-3500	oil seal Φ20*Φ35*7	pc	1
25	71113-T90A-0000	spindle bushing	pc	1
26	B3452.1-180C-0132	O-ringΦ1.8*Φ13.2	pcs	2
27	B858-016G-000B	washer Φ20Φ16.5*Φ22*1	pc	1
28	B812-16MG-000B	nut M16	pc	1
29	71114-T90A-0000	flat key	pc	1
30	71116-T90A-000B	key 5*5*18	pc	1
31	71108-T90A-000A	protective cover	pc	1
32	71121-T90A-0000	Countershaft	pc	1
33	71116-TA5A-0000	key 56*6*20	pc	1
34	71109-250K-000B	adjustable washer	pc	1
35	71123-T90A-0000	Double gear, countershaft	pc	1
36	71109-220K-000B	adjustable washer	pc	1
37	73006-TA0A-0000	paper pad	pc	1
38	7110C-TA0A-100A		pc	1