

## Wide Range of Products for Every Need



For more information give **MISSED CALL: 07676065555**



Many of our products have BIS: ISI certification.



Product	<b>Agricultural Brush Cutter</b>	KisanKraft Invoice Date	
Brand	<b>KisanKraft</b>	KisanKraft Invoice No.	
Model	<b>KK-BC2-143, KK-BC2-541</b>		
<b>WARRANTY PERIOD</b>	<b>6 MONTHS</b>	FOR THE SPECIFIED PERIOD FROM THE DATE OF SALE OR DELIVERY WHICHEVER IS EARLIER.	
Dealer's Invoice Date		Dealer's Invoice No.	
Buyer's Info (Name, Address, Phone, etc.):		Dealer's Stamp (Address, Phone, TIN, etc.):	
Buyer's Sign		Dealer's Sign	

## Warranty Policy

**What is covered:** KisanKraft Limited and its manufacturers warrant this product to be free from defects in material or workmanship. All parts defective in material and workmanship are covered.

This warranty will only cover defects arising under normal usage.

This warranty is limited to repair or replacement by KisanKraft Limited or its manufacturers of such parts as appear to KisanKraft or its manufacturers, upon inspection, to be defective in material and/or workmanship. KisanKraft and its manufacturers make no warranty with respect to items not manufactured or sold by them. No onsite warranty is provided by KisanKraft Limited or its manufacturers. Defective items must be brought/sent to our Authorized Dealer or KisanKraft Limited's office for service.

**What is not covered:** The *warranty shall become null and void* and neither KisanKraft Limited nor any of its manufacturers, nor its authorized dealers assume any responsibility, if the failure was caused by the following:

(1) Operation of product with incorrect fuel or lubricants, (2) Incorrect usage of machine or misuse, (3) Lack of maintenance, (4) Negligence, (5) Accident or physical damage, (6) Repairs made by unauthorized parties and/or with unauthorized parts, (7) Improper set up, adjustments, tampering or altered products (8) Any modification to the product what-so-ever.

**Important:** (1) Normal maintenance and adjustments to the product is the responsibility of the customer. (2) Normal wear and tears are not covered under warranty. (3) Rubber/plastic parts and consumables such as blades, clutch and clutch-bell, sparkplugs, nylon line, air-filters, fuel-filters, oil seals and gaskets etc. are not covered under the warranty. (4) Electrical Motor, Electrical Parts, Battery Etc. are not covered under the warranty.

**This warranty is null & void, if you fail to register the warranty with KisanKraft by sending the KisanKraft Copy with dealer's stamp.**

**Incidental / Consequential Loss:** KisanKraft Limited or its manufacturers will not be liable for general damages, including bodily injuries, or for incidental or consequential damages including, but not limited to, loss of use, loss of profits, loss of production, expense of substitute equipment or other commercial loss or damage.

**Limitation of Liability:** This limited warranty is in lieu of all other express warranties, obligations, or liabilities. Any implied warranties, obligations, or liabilities, including, but not limited to, any implied warranty of merchantability shall be limited in duration to the applicable warranty period. Any action for breach of any warranties hereunder, including, but not limited to, any implied warranty of merchantability must be brought within the applicable warranty period.

**Modifications of Warranty:** No agent, representative, dealer, or employee of KisanKraft Limited or any of its manufacturers has the authority to increase or alter the obligations of this warranty.

**Assignment / Transfer of warranty:** The warranty cannot be assigned and shall not transfer if the product is resold by the first buyer. The above warranties are extended to the first end user (original purchaser), and no warranty is made, nor authorized to be made assignable on resale by the first end user.

**What you must do to obtain limited warranty service:** To obtain performance of any obligation under this warranty for failure during the applicable warranty period, you must deliver the defective product, to the nearest Authorized Dealer, along with proof-of-purchase (invoice/receipt). KisanKraft Limited, its manufacturers and its dealers reserve the right to inspect the claimed defective part(s) to determine if the malfunction is the result of a defect covered by this warranty. Please note that the decision of KisanKraft Limited with respect to any warranty claim is final.

**After-sales Service (Including Warranty):** KisanKraft Limited does not sell directly to consumers. All sales or supplies are made through Authorized Dealers. It is the responsibility of the Authorized Dealer to provide all after-sales service to consumers. Any warranty claim should be raised by the dealer to KisanKraft Limited as per warranty policy.

**Jurisdiction:** All disputes are subject to Bangalore court's jurisdiction.

### Notes:

- This purchase is not contingent upon a product demonstration. The purchaser shall satisfy himself with the product, including any product demonstration or verification of any function, before buying. KisanKraft Limited or its authorized dealers, including online sellers, shall not be liable to give any on-site demonstration after purchase of any of the products.
- Any product once used will not be taken back by KisanKraft Limited.
- Warranty and After Sale Services (including but not limited to installation, Demonstration, Repair, Routine Maintenance etc.), should be done through the Authorized Dealer selling this product.
- Dealers should have their own technician to provide After Sales Services to their Customers. KisanKraft Limited provides free training to Authorized Dealer's technicians at KisanKraft Limited's head office, on request from Authorized Dealer.

**KisanKraft has a large range of products to serve the farmers. A list of our products is given below:**

<b>Brush Cutters and Accessories</b> <ul style="list-style-type: none"> <li>Brush Cutter/Power Weeder</li> <li>Backpack Brush Cutter</li> <li>Tea Pruner</li> <li>Pole pruner with Engine</li> <li>Reaper Attachment</li> <li>Blades-Circular</li> <li>Blades (2 &amp; 3 points)</li> <li>Baffle</li> <li>Nylon Rope</li> <li>Tap &amp; Go</li> </ul> <b>Chainsaws</b> <ul style="list-style-type: none"> <li>Petrol Chainsaw</li> <li>Electric Chainsaw</li> <li>Chain Sharpening Machine</li> </ul> <b>Engines and Water Pumps</b> <ul style="list-style-type: none"> <li>Engine –Diesel-(Horizontal)</li> <li>Engine –Diesel-(Vertical)</li> <li>Engine-Kerosene</li> <li>Water Pump with Petrol Engine</li> <li>Water Pump with Kerosene Engine</li> <li>Water Pump with Diesel Engine</li> </ul> <b>Hand Tools</b> <ul style="list-style-type: none"> <li>Secateurs</li> <li>Folding Saw</li> <li>Garden Rake</li> <li>Garden Shovel</li> <li>Hedge Shear</li> <li>Lopper</li> <li>Telescopic Hedge Shear</li> <li>Telescopic Lopping Shear</li> <li>Tree Pruner</li> <li>Telescopic Steel Pipe &amp; Fruit Picker</li> <li>Bag</li> <li>Sheep Shear</li> </ul> <b>Garden Tools</b> <ul style="list-style-type: none"> <li>Electric Pressure Washer</li> <li>Hedge Trimmer</li> <li>Lawn Mower (Electric, Petrol &amp; Manual)</li> <li>Leaf Blower</li> </ul>	<b>Cultivators and Accessories</b> <p>Petrol and Diesel</p> <b>Sprayers and Accessories</b> <ul style="list-style-type: none"> <li>Battery Sprayer</li> <li>Portable Power Sprayer</li> <li>Trolley Sprayer</li> <li>Manual Knapsack Sprayer</li> <li>Manual Pressure Sprayer</li> <li>Rose Cans</li> <li>Hose Crimping Machine</li> <li>HTP Sprayer</li> <li>HTP Delivery Hose</li> <li>HTP Hose Reel</li> <li>HTP Stand</li> <li>HTP Gun / Lance(Brass Rod)</li> <li>Knapsack Power Sprayer</li> <li>Mister / Duster / Granule Spreader</li> <li>HTP Sprayer Set with Diesel Engine</li> <li>HTP Sprayer Set with Kerosene Engine</li> <li>Fogging Machine</li> </ul> <b>Milking Machine</b> <ul style="list-style-type: none"> <li>Wood Shredder</li> <li>Fodder Ensiling Chaff Cutter</li> <li>Fodder Grinder Chaff Cutter</li> <li>Fodder Mini Chaff Cutter</li> </ul> <b>Harvester</b> <ul style="list-style-type: none"> <li>Maize Sheller</li> <li>Maize Sheller + Dehusker</li> <li>Maize Combine Harvester</li> <li>Onion Digger Carlotta Italy</li> <li>Tea Leaf Harvester</li> <li>Sugarcane Combine Harvester</li> <li>Sugarcane Leaf Stripper</li> </ul> <b>Transplanter and Post Hole Digger</b> <ul style="list-style-type: none"> <li>Paddy Transplanter (2 &amp; 8 Rows)</li> <li>Transplanter-Vegetable &amp; Tobacco</li> <li>Post Hole Digger(4" to 14"Augers)</li> </ul>
---	--

to, loss of use, loss of profits, loss of production, expense of substitute equipment or other commercial loss or damage.

**Limitation of Liability:** This limited warranty is in lieu of all other express warranties, obligations, or liabilities. Any implied warranties, obligations, or liabilities, including, but not limited to, any implied warranty of merchantability shall be limited in duration to the applicable warranty period. Any action for breach of any warranties hereunder, including, but not limited to, any implied warranty of merchantability must be brought within the applicable warranty period.

**Modifications of Warranty:** No agent, representative, dealer, or employee of KisanKraft Limited or any of its manufacturers has the authority to increase or alter the obligations of this warranty.

**Assignment / Transfer of warranty:** The warranty cannot be assigned and shall not transfer if the product is resold by the first buyer. The above warranties are extended to the first end user (original purchaser), and no warranty is made, nor authorized to be made assignable on resale by the first end user.

**What you must do to obtain limited warranty service:** To obtain performance of any obligation under this warranty for failure during the applicable warranty period, you must deliver the defective product, to the nearest Authorized Dealer, along with proof-of-purchase (invoice/receipt). KisanKraft Limited, its manufacturers and its dealers reserve the right to inspect the claimed defective part(s) to determine if the malfunction is the result of a defect covered by this warranty. Please note that the decision of KisanKraft Limited with respect to any warranty claim is final.

**After-sales Service (Including Warranty):** KisanKraft Limited does not sell directly to consumers. All sales or supplies are made through Authorized Dealers. It is the responsibility of the Authorized Dealer to provide all after-sales service to consumers. Any warranty claim should be raised by the dealer to KisanKraft Limited as per warranty policy.

**Jurisdiction:** All disputes are subject to Bangalore court's jurisdiction.

**Notes:**

- This purchase is not contingent upon a product demonstration. The purchaser shall satisfy himself with the product, including any product demonstration or verification of any function, before buying. KisanKraft Limited and its authorized dealers, including online sellers, shall not be liable to give any on-site demonstration after purchase of any of the products.
- Any product once used will not be taken back by KisanKraft Limited.
- Warranty and After Sale Services (including but not limited to installation, Demonstration, Repair, Routine Maintenance etc.), should be done through the Authorized Dealer selling this product.
- Dealers should have their own technician to provide After Sales Services to their Customers. KisanKraft Limited provides free training to Authorized Dealer's technicians at KisanKraft Limited's head office, on request from Authorized Dealer

## User Manual



### KisanKraft Limited

**Factory:** 818 3B1 to 818 3B18, Podalakur - Sangam Road, Prabagiripatnam,  
Podalakur, Nellore - 524345, Andhra Pradesh, INDIA

**Head Office:** #4, 1<sup>st</sup> Main, 7-A Cross, Maruthi Layout, Dasarahalli, HAF Post, Hebbal,  
Bangalore 560024, Karnataka, INDIA

◆ Bangalore (HO) ◆ Ahmedabad ◆ Bhopal ◆ Bhubaneswar ◆ Coimbatore  
◆ Guwahati ◆ Hubli ◆ Hyderabad ◆ Jaipur ◆ Karnal  
◆ Kolkata ◆ Lucknow ◆ Nellore ◆ Pune ◆ Raipur



Scan the QR code to download  
KisanKraft App

App is available on



Scan the QR code for  
KisanKraft Youtube Channel



## CONTENTS

BEFORE GETTING STARTED .....	7
PART DIAGRAM .....	8
GENERAL SAFETY PRECAUTIONS .....	9
ASSEMBLY .....	16
FUEL HANDLING .....	23
STARTING AND STOPPING .....	26
OPERATING TECHNIQUES .....	28
MAINTENANCE .....	33
TROUBLE SHOOTING .....	34
ENGINE KK-BC2-541 .....	41
ENGINE KK-BC2-143 .....	45
TECHNICAL SPECIFICATIONS .....	48

Product	Agricultural Brush Cutter	KisanKraft Invoice Date	
Brand	KisanKraft	KisanKraft Invoice No.	
Model	KK-BC2-143, KK-BC2-541		
WARRANTY PERIOD	6 MONTHS	FOR THE SPECIFIED PERIOD FROM THE DATE OF SALE OR DELIVERY WHICHEVER IS EARLIER.	
Dealer's Invoice Date		Dealer's Invoice No.	
Buyer's Info (Name, Address, Phone, etc.):		Dealer's Stamp (Address, Phone, TIN, etc.):	
Buyer's Sign		Dealer's Sign	

## Warranty Policy

**What is covered:** KisanKraft Limited and its manufacturers warrant this product to be free from defects in material or workmanship. All parts defective in material and workmanship are covered.

This warranty will only cover defects arising under normal usage.

This warranty is limited to repair or replacement by KisanKraft Limited or its manufacturers of such parts as appear to KisanKraft or its manufacturers, upon inspection, to be defective in material and/or workmanship. KisanKraft and its manufacturers make no warranty with respect to items not manufactured or sold by them. No onsite warranty is provided by KisanKraft Limited or its manufacturers. Defective items must be brought/sent to our Authorized Dealer or KisanKraft Limited's office for service.

**What is not covered:** The *warranty shall become null and void* and neither KisanKraft Limited nor any of its manufacturers, nor its authorized dealers assume any responsibility if the failure was caused by the following:

(1) Operation of product with incorrect fuel or lubricants, (2) Incorrect usage of machine or misuse, (3) Lack of maintenance, (4) Negligence, (5) Accident or physical damage, (6) Repairs made by unauthorized parties and/or with unauthorized parts, (7) Improper set up, adjustments, tampering or altered products (8) Any modification to the product what-so-ever.

**Important:** (1) Normal maintenance and adjustments to the product is the responsibility of the customer. (2) Normal wear and tears are not covered under warranty. (3) Rubber/plastic parts and consumables such as blades, clutch and clutch-bell, sparkplugs, nylon line, air-filters, fuel-filters, oil seals and gaskets etc. are not covered under the warranty. (4) Electrical Motor, Electrical Parts, Battery Etc. are not covered under the warranty.

**Incidental / Consequential Loss:** KisanKraft Limited or its manufacturers will not be liable for general damages, including bodily injuries, or for incidental or consequential damages including, but not limited

## TECHNICAL SPECIFICATIONS

Model	KK-BC2-143	KK-BC2-541
Engine Type	2-stroke	
	Petrol Engine	
Maximum Engine Power	1.3 kW (1.74 hp)	1.55 kW (2.1 hp)
Engine Displacement	41.5 cc,	41.5 cc
Rpm(Min-Max)	1470/7500	2500/8570
Fuel Tank	0.940 ML	0.940 ML
Sound Power Level(Db)	113	107

**Note:** Technical data is subject to change without prior notice.

Product	<b>Agricultural Brush Cutter</b>	KisanKraft Invoice Date	
Brand	<b>KisanKraft</b>	KisanKraft Invoice No.	
Model	<b>KK-BC2-143, KK-BC2-541</b>		
<b>WARRANTY PERIOD</b>	<b>6-MONTHS</b>	FOR THE SPECIFIED PERIOD FROM THE DATE OF SALE OR DELIVERY WHICHEVER IS EARLIER.	
Dealer's Invoice Date		Dealer's Invoice No.	
Buyer's Info (Name, Address, Phone, etc.):		Dealer's Stamp (Address, Phone, TIN, etc.):	
Buyer's Sign		Dealer's Sign	

## Warranty Policy

**What is covered:** KisanKraft Limited and its manufacturers warrant this product to be free from defects in material or workmanship. All parts defective in material and workmanship are covered. This warranty will only cover defects arising under normal usage. This warranty is limited to repair or replacement by KisanKraft Limited or its manufacturers of such parts as appear to KisanKraft or its manufacturers, upon inspection, to be defective in material and/or workmanship. KisanKraft or its manufacturers make no warranty with respect to items not manufactured or sold by them. No onsite warranty is provided by KisanKraft Limited or its manufacturers. Defective items must be brought/sent to our Authorized Dealer or KisanKraft Limited's office for service.

**What is not covered:** The *warranty shall become null and void* and neither KisanKraft Limited nor any of its manufacturers, nor its authorized dealers assume any responsibility, if the failure was caused by the following:

(1) Operation of product with incorrect fuel or lubricants, (2) Incorrect usage of machine or misuse, (3) Lack of maintenance, (4) Negligence, (5) Accident or physical damage, (6) Repairs made by unauthorized parties and/or with unauthorized parts, (7) Improper set up, adjustments, tampering or altered products (8) Any modification to the product what-so-ever.

**Important:** (1) Normal maintenance and adjustments to the product is the responsibility of the customer. (2) Normal wear and tears are not covered under warranty. (3) Rubber/plastic parts and consumables such as blades, clutch and clutch-bell, sparkplugs, nylon line, air-filters, fuel-filters, oil seals and gaskets etc. are not covered under the warranty. (4) Electrical Motor, Electrical Parts, Battery Etc. are not covered under the warranty.

**Incidental / Consequential Loss:** KisanKraft Limited or its manufacturers will not be liable for general damages, including bodily injuries, or for incidental or consequential damages including,

but not limited to, loss of use, loss of profits, loss of production, expense of substitute equipment or other commercial loss or damage.

**Limitation of Liability:** This limited warranty is in lieu of all other express warranties, obligations, or liabilities. Any implied warranties, obligations, or liabilities, including, but not limited to, any implied warranty of merchantability shall be limited in duration to the applicable warranty period. Any action for breach of any warranties hereunder, including, but not limited to, any implied warranty of merchantability must be brought within the applicable warranty period.

**Modifications of Warranty:** No agent, representative, dealer, or employee of KisanKraft Limited or any of its manufacturers has the authority to increase or alter the obligations of this warranty.

**Assignment / Transfer of warranty:** The warranty cannot be assigned and shall not transfer if the product is resold by the first buyer. The above warranties are extended to the first end user (original purchaser), and no warranty is made, nor authorized to be made assignable on resale by the first end user.

**What you must do to obtain limited warranty service:** To obtain performance of any obligation under this warranty for failure during the applicable warranty period, you must deliver the defective product, to the nearest Authorized Dealer, along with proof-of-purchase (invoice/receipt). KisanKraft Limited, its manufacturers and its dealers reserve the right to inspect the claimed defective part(s) to determine if the malfunction is the result of a defect covered by this warranty. Please note that the decision of KisanKraft Limited with respect to any warranty claim is final.

**After-sales Service (Including Warranty):** KisanKraft Limited does not sell directly to consumers. All sales or supplies are made through Authorized Dealers. It is the responsibility of the Authorized Dealer to provide all after-sales service to consumers. Any warranty claim should be raised by the dealer to KisanKraft Limited as per warranty policy.

**Jurisdiction:** All disputes are subject to Bangalore court's jurisdiction.

## Notes:

- This purchase is not contingent upon a product demonstration. The purchaser shall satisfy himself with the product, including any product demonstration or verification of any function, before buying. KisanKraft Limited or its authorized dealers, including online sellers, shall not be liable to give any on-site demonstration after purchase of any of the products.
- Any product once used will not be taken back by KisanKraft Limited.
- Warranty and After Sale Services (including but not limited to installation, Demonstration, Repair, Routine Maintenance etc.), should be done through the Authorized Dealer selling this product.
- Dealers should have their own technician to provide After Sales Services to their Customers. KisanKraft Limited provides free training to Authorized Dealer's technicians at KisanKraft Limited's head office, on request from Authorized Dealer.

NO.	MODEL	NAME	QTY
49	M5x65	SCREW M5x65	2
50	G45L	SCREW	1
51	M5x12	SCREW M5x12	4
52	G45B	FUEL TANK ASSY	1
53	G45B	TANK PROTECTOR	1
54	12*32*6.5	OIL SEAL	1

NO.	MODEL	NAME	QTY	NO.	MODEL	NAME	QTY
1	G45L	RECOIL STARTER ASSY	1	25	BM6A	SPARK PLUG	1
2	M6x14	SCREW M6*14	4	26	M4x20	SCREW M4x20	2
3	1E40F-8/G45L	FRONT CRANK CASE	1	27	G45L/G45/BG35	MUFFLER GASKET	1
4	1E40F-5	START REEL	1	28	G45L	MUFFLER	1
5	ø12X22X7F	OIL SEAL	1	29	M5x50	SCREW M5x50	2
6	1E40F-8/G45L	BACK CRANK CASE	1	30	G45L/G35L	DEBRIS BAFFLE	1
7	GB276 6201/P5	BEARING 6201/P5	2	31	G45L	INSULATING GASKET	1
8	G45	CRANK SHAFT ASSY	1	32	1E36F-3	FASTENER	1
9	3X3X11	KEY 3*3*11	1	33	M5x20	SCREW M5x20	4
10	3X10	PIN 3x10	3	34	G45L	CLUTCH SHOE ASSY	1
11	GB119 B5X12	PIN 5x12	2	35	1E40F-5-11	WAVE WASHER	2
12	M5x30	SCREW M5*30	4	36	G45L/G45/BG35	SCREW PIN	2
13	G45L	FLY WHEEL	1	37	G45L	FAN COVER	1
14	GB6171 M8X1.25	NUT M8x1.25	1	38	1E40F-5-11	WASHER	2
15	KBK101411/G45L	NEEDLE BEARING	1	39	G45L	ADMITTING PIPE GASKET	1
16	<P10/1E40F-5	PISTON PIN RING	2	40	G45L	ADMITTING PIPE	1
17	G45L/10*32.5	PISTON PIN	1	41	G45L(\$10)/YD-40	WASHER	2
18	G45L	IGNITION STATOR	1	42	G45L	CARBURETOR GASKET	1
19	G45L	PISTON	1	43	H119-3-00-33/G45	CARBURETOR	1
20	1E40FP-3Z.3-5/G45	PISTON RING	2	44	G45L	PLUG COVER	1
21	G45L/G45/BG35	CYLINDER GASKET	1	45	G45L	INSIDE COVER	1
22	G45L	CYLINDER	1	46	G45L	ASBESTOS PAD	1
23	M5x20	SCREW M5*20	4	47	G45L	SPONGE PAD	1
24	G45L	CYLINDER COVER	1	48	G45L	AIR FILTER COVER	1

### BEFORE GETTING STARTED

Before using the machine for the first time be sure to read through this manual in order to avoid wrong operation. Please preserve this manual properly so that it can provide you with information whenever necessary.  
or **light plants**.

### SAFETY SYMBOLS ON THE MACHINE:

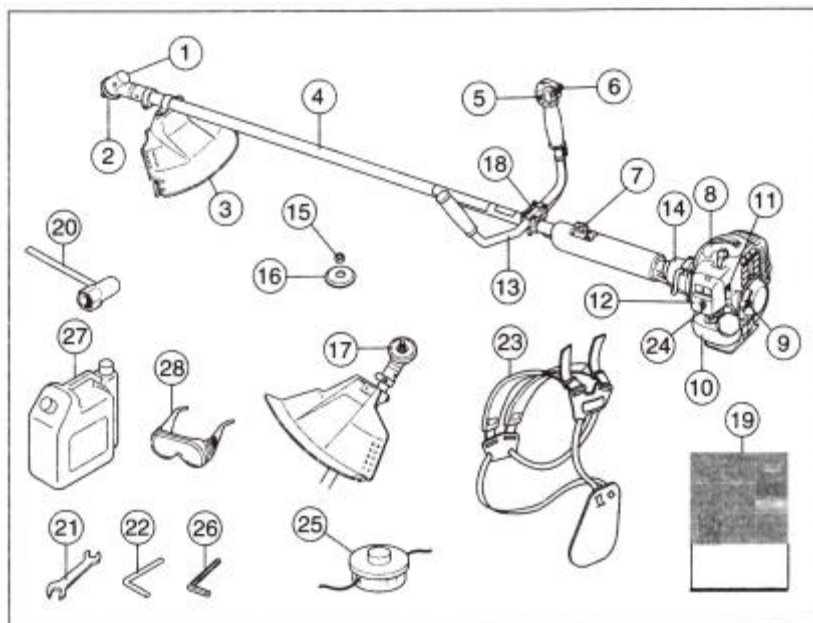
Wear goggles, ear protection and head protection.	
Wear protecting gloves	
Wear safety shoes with hard soles.	
Read through this operation instruction before you use the device.	
Ensure cutting head is not touching foreign matters while starting and during operation.	
To reduce the risk of injury or damage, avoid contact with any hot surface.	
Keep all bystanders at least 15m away from the work area.	
Cutting string: maximum allowable rotate speed	
Cutting blade: maximum allowable rotate speed.	
A hazard from fire/flammable materials.	

### Symbols on the filter cover:

Cold starting position of the handle at "choke" Operating position of handle at "running".	
Mixing ratio: 50:1, only suitable for mixed fuel	



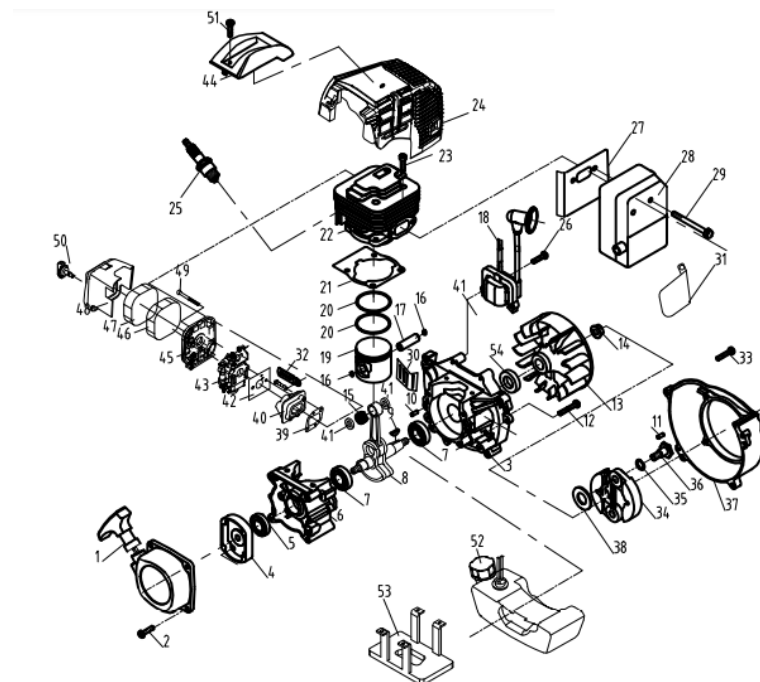
## PART DIAGRAM



E

- |                                 |                      |
|---------------------------------|----------------------|
| 1 Grease filler cap, bevel gear | 15 Locking nut       |
| 2 Bevel gear                    | 16 Support flange    |
| 3 Cutting attachment guard      | 17 Drive disc        |
| 4 Shaft                         | 18 Handlebar clamp   |
| 5 Stop switch                   | 19 Operator's manual |
| 6 Throttle control              | 20 Socket spanner    |
| 7 Suspension ring               | 21 Spanner           |
| 8 Cylinder cover                | 22 Locking pin       |
| 9 Starter handle                | 23 Harness           |
| 10 Fuel tank                    | 24 Air purge         |
| 11 Choke control                | 25 Trimmer head      |
| 12 Air filter cover             | 26 Allen key         |
| 13 Handlebar                    | 27 Tank              |
| 14 Clutch cover                 | 28 Goggle            |

## ENGINE KK-BC2-143





NO.	PART NO.	PART NAME	QTY.
49	G4581.00TROt TANK	FUEL TANK ASSY	1
50	C4SIVIDIDI OEUNT	TANK PROTECTOR	1
61	12113207.	OIL SEAL	1
62	MC	IGNITION COIL CAP	1
63	115:16	SCREW MSx16	1
64	115x12	SCREW M.5x12	6
55	116x26	SCREW AISs25	6
56	6453	MR BOARD	1
67	6458	CRANK CASE GASKET	1
66	6460	MUFFLER COVER	1
69	G45C	PLATE MUFFLER	1

## GENERAL SAFETY PRECAUTIONS

### IMPORTANT!

- The machine is only designed for trimming grass.
- The only accessories you can operate **with** this engine unit are the cutting attachments we. Recommend, in technical data.
- Never use the machine if you are tired, if you have drunk alcohol, or if you are taking medication that could affect your vision, your judgement, or your coordination.
- Wear personal protective equipment. See instructions under the heading Personal protective equipment.
- Never use a machine that has been modified in any way from its original specification.
- Never use a machine that is faulty. Carry out the checks, maintenance and service instructions described in this manual. Some maintenance and service measures must be carried out by trained and qualified specialists. See instructions under the heading Maintenance.
- All covers, guards and handles must be fitted before starting. Ensure that the spark plug cap and ignition lead are undamaged to avoid the risk of electric shock.
- The machine operator must ensure that no people or animals come closer than 15 meters while working. When several operators are working in the same area the safety distance should be at least twice the tree height and no less than 15 meters.

### WARNING

- The ignition system of this machine produces an electromagnetic field during operation. This field may under some circumstances interfere with pacemakers. To reduce the risk of serious or fatal injury, we recommend persons with pacemakers to consult their physician and the pacemaker manufacturer before operating this machine.

**WARNING! Running an engine** in a confined or badly ventilated area can result in death **due to asphyxiation** or carbon monoxide **poisoning**.

### Personal protective equipment

#### IMPORTANT!

- A clearing saw, brush cutter or trimmer can be dangerous if used incorrectly or carelessly and can cause serious or fatal injury to the operator or others. It is extremely important that you read and understand the contents of this operator's manual.
- You must use approved personal protective equipment whenever you use the machine. Personal protective equipment cannot eliminate the risk of injury, but it will reduce the degree of injury if an accident does happen. Ask your dealer for help in choosing the right equipment. Warning! Listen out for warning signals or sounds when you are wearing hearing protection as soon as the engine stops,

#### HELMET

A protective helmet where there is a risk of falling objects.



#### HEARING PROTECTION

Wear hearing protection that provides adequate noise reduction.



#### EYE PROTECTION

Always wear approved eye protection. If you use a visor, then you must also wear approved protective goggles. Approved protective goggles must comply with standard.



#### GLOVES

Gloves should be worn, when necessary, e.g., when fitting cutting attachments



#### BOOTS

Wear boots with steel toecaps and non-slip soles.



#### CLOTHING

Wear clothes made of a strong fabric and avoided loose clothing that can catch on twigs and branches. Always wear heavy, long pants. Do not wear jewelry, shorts sandals or go barefoot. Secure hair so it is above shoulder level.

#### FIRST AID KIT

Always have a first aid kit nearby.

22	G451.	CYLINDER	1	46	G461.	ASBESTOS PAD	1
23	HEM	SCREW MS*20	4	47	G45L	SPONGE PAD	1
24	G45C	CYLINDER COVER	1	48	G45C	AIR FILTER COVER	1

NO.	PART NO.	PART NAME	QTY.	NO.	PART NO.	PART NAME	QTY.
1	G45C	RECOIL STARTER ASSY	1	25	BM6A	SPARK PLUG	1
2	116x16	SCREW M6014	4	26	114:20	SCREW AUX20	2
3	1E4010-3/G451)	FRONT CRANK CASE	1	27	G45L/G45/B035	INSULATING GASKET	1
4	IE40F-5	START REEL	1	28	G45L (LOVER OIL TANK)	MUFFLER	1
5	412X22X7F	OIL SEAL	1	29	115x70	SCREW A1Sx70	2
6	wour-3/G45	BACK CRANK CASE	1	30	G45L/G35L	DEBRIS BAFFLE	1
7	GB276 6201/11	BEARING 6201/PS	2	31	G45LUM000.2m)BIG	MUFFLER GASKET	2
8	G46O5musicunu0	CRANK SHAFT ASSY	1	32	1E36P-3	FASTENER	1
9	3X3X11	KEY 303011	1	33	115:20	SCREW MSx20	4
10	3 X 10	PIN 3x10	3	34	G45L	CLUTCH SHOE ASSY	1
11	GB119 B5 X 12	PIN Sx12	2	35	1E40E-5-11	WAVE WASHER	2
12	106x30	SCREW M5030	4	36	046L/G45/3G35	SCREW PIN	2
13	COL	FLY WHEEL	1	37	G45L	FAN COVER	1
14	GB6171 118X I. 25	NUT MIN1.2\$	1	38	16401?-5-11	WASHER	2
16	EB1101411/G45L	NEEDLE BEARING	1	39	G45L	ADMITTING PIPE GASKET	1
16	010/1E40P-5	PISTON PIN RING	2	40	GisLOGIER OIL TAND	ADMITTING PIPE	1
17	04EL/10032. 6	PISTON PIN	1	41	G45L( 3 10) /YD-40	WASHER	2
18	Gm)	IGNITION STATOR	1	42	G45L	CARBURETOR GASKET	1
19	G45L	PISTON	1	43	11119-3-00-33/G45	CARBURETOR	1
20	I6A4PP-32. 3-6/C46	PISTON RING	2	44	M2162	SCREW 143x65	2
21	G45L/G45/BG35	CYLINDER GASKET	1	45	G45L	INSIDE COVER	1



### Machine's safety equipment

This section describes the machine's safety equipment, its purpose, and how checks and maintenance should be carried out to ensure that it operates correctly. See the "What is what?" section to locate where this equipment is positioned on your machine.

The life span of the machine can be reduced, and the risk of accidents can increase if machine maintenance is not carried out correctly and if service and/or repairs are not carried out professionally. If you need further information, please contact your nearest service workshop.

**IMPORTANT!** All servicing and repair work on the machine requires special training. This is especially true of the machine's safety equipment. If your



machine fails any of the checks described below you must contact your service agent. When you buy any of our products, we guarantee the availability of professional repairs and service. If the retailer who sells your machine is not a servicing dealer, ask him for the address of your nearest service agent.

**WARNING! Never use a machine with faulty safety equipment. The machine's safety equipment must be checked and maintained as described in this section.**

**If your machine fails any of these checks, contact your service agent to get it repaired.**

### Stop switch.

Use the stop switch to switch off the engine.

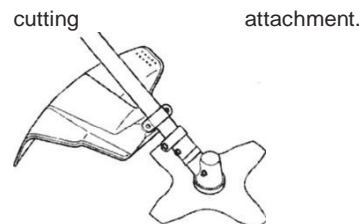


Start the engine and make sure the engine stops when you move the stop switch to the stop setting.

### Cutting attachment guard



This guard is intended to prevent loose objects from being thrown towards the operator. The guard also protects the operator from accidental contact with the

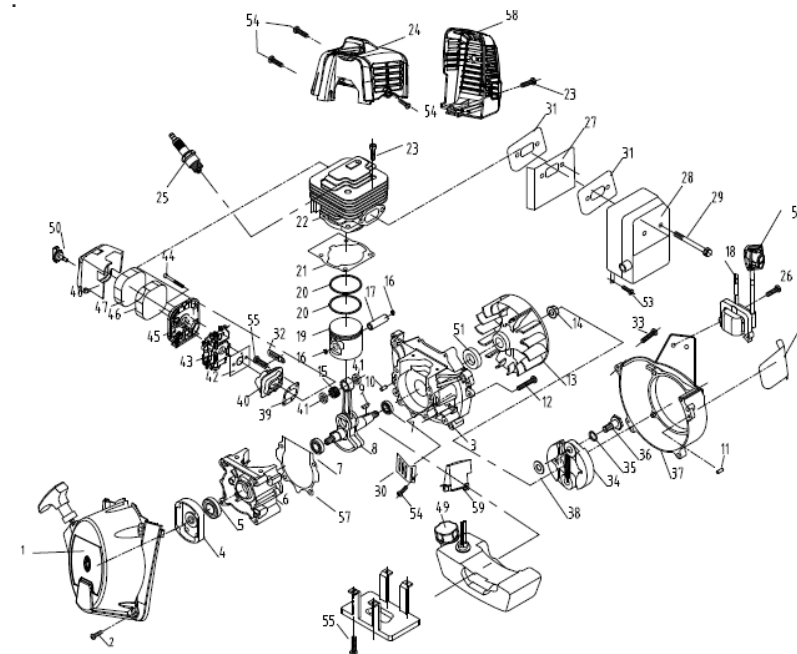


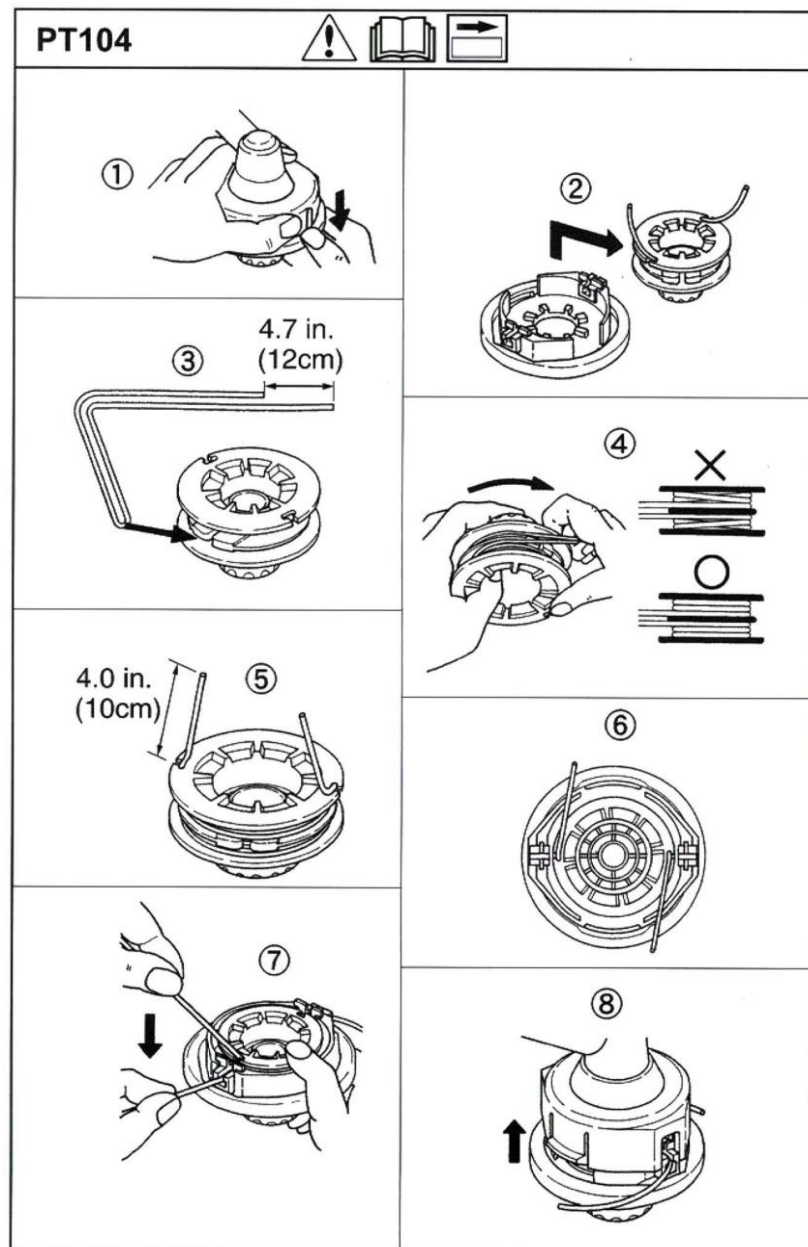
Check that the guard is undamaged and not cracked. Replace the guard if it has been exposed to impact or is cracked.

Always use the recommended guard for the cutting attachment you are using. See page on technical data.

**WARNING! Never use a cutting attachment without an approved guard. See the chapter on technical data. If an incorrect or faulty guard is fitted this can cause serious personal injury.**

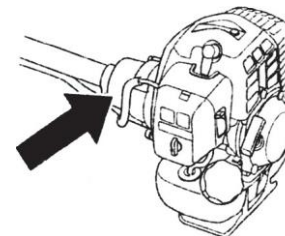
### ENGINE KK-BC2-541





### Vibration damping system.

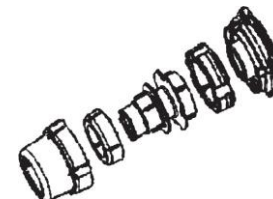
Your machine is equipped with a vibration damping system that is designed to minimize vibration and make operation easier.



Using incorrectly wound cord or a blunt or incorrect cutting attachment (wrong type or incorrectly filed, see instructions under the heading Filing the blade) increases the level of vibration.

The machine's vibration damping system reduces the transfer of vibration between the engine unit/cutting equipment and the machine's handle unit.

Regularly check the vibration damping units for cracks or deformation.



Check that the vibration damping element is undamaged and securely attached.



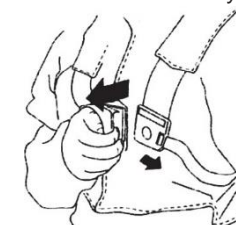
**WARNING!**

Overexposure to vibration can lead to circulatory damage or nerve damage in people who have impaired circulation. Contact your doctor if you experience symptoms of overexposure to vibration. Such symptoms include numbness, loss of feeling, tingling, pricking, pain, loss of strength, changes in skin color or condition. These symptoms normally appear in the fingers, hands, or wrists. The risk increases at low temperatures.

### Quick release

There is an easily accessible, quick release fitted at the front as a safety precaution in case the engine catches fire, or in any other situation it is required for you to free yourself from the machine and harness. See instructions under the heading Adjusting the harness and clearing saw.

Check that the harness straps are correctly positioned. Once the harness and machine have been adjusted, check that the harness quick release works correctly.



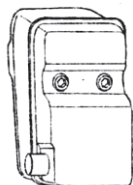
**Muffler**



The muffler is designed to keep noise levels to a minimum and to direct exhaust fumes away from the user.



user.



### WARNING! The

Inside of the muffler contain chemicals that may be carcinogenic. Avoid contact with these elements in the event of a damaged muffler.

**WARNING! Bear In mind that:** The exhaust fumes from the engine are hot and may contain sparks which can start a fire. Never start the machine indoors or near combustible material!

### Cutting equipment

This section describes how to choose and maintain your cutting equipment in order to:

Obtain maximum cutting performance.  
Extend the life of cutting equipment.

### IMPORTANT!

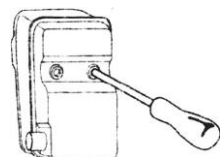
Only use cutting attachments with the guards we recommend!

Refer to the instructions for the cutting attachment to check the correct way to load the cord and the correct cord

For mufflers it is very important that you follow the instructions on checking, maintaining, and servicing your machine.

Never use a machine that has a faulty muffler.

Regularly check that the muffler is securely attached to the machine.



diameter.

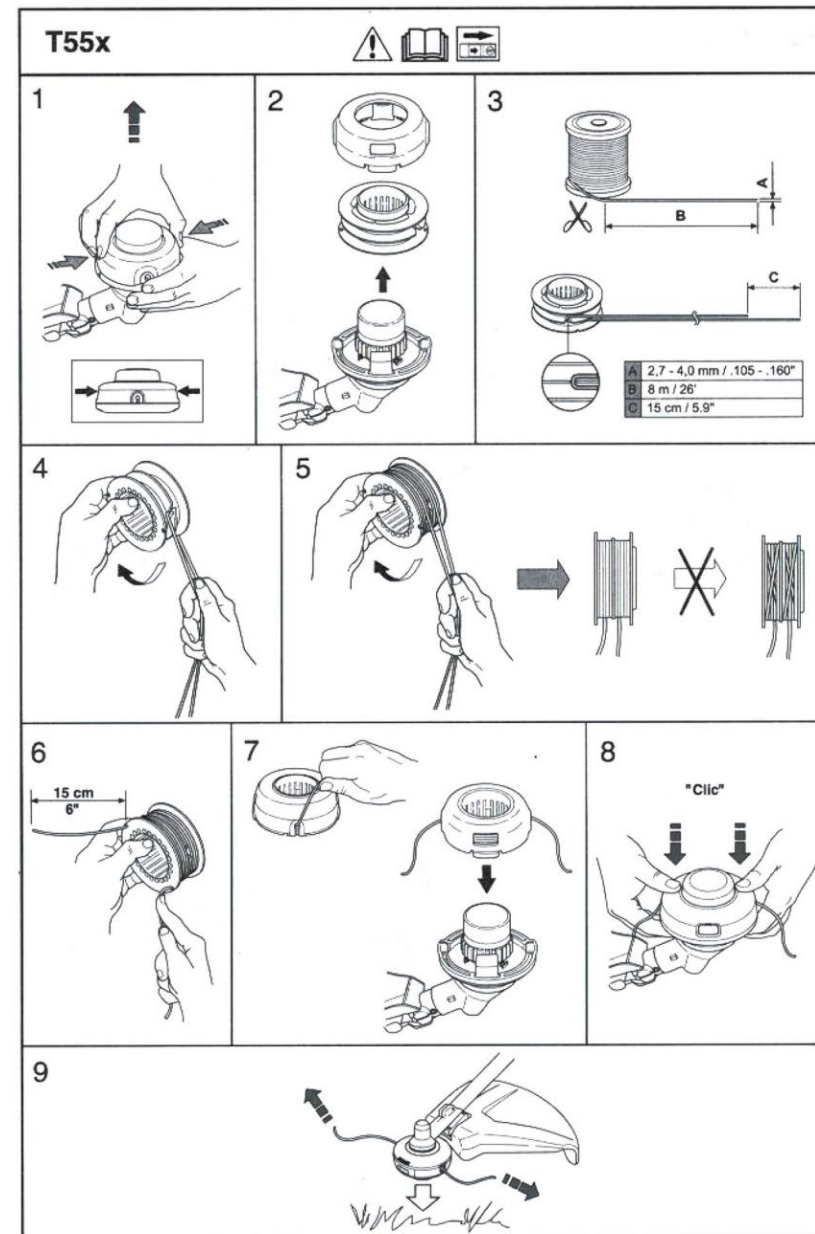
**WARNING! Always stop the engine before doing any work on the cutting attachment. This continues to rotate even after the throttle has been released. Ensure that the cutting attachment has stopped completely and disconnect the HT lead from the spark plug before you start to work on it**

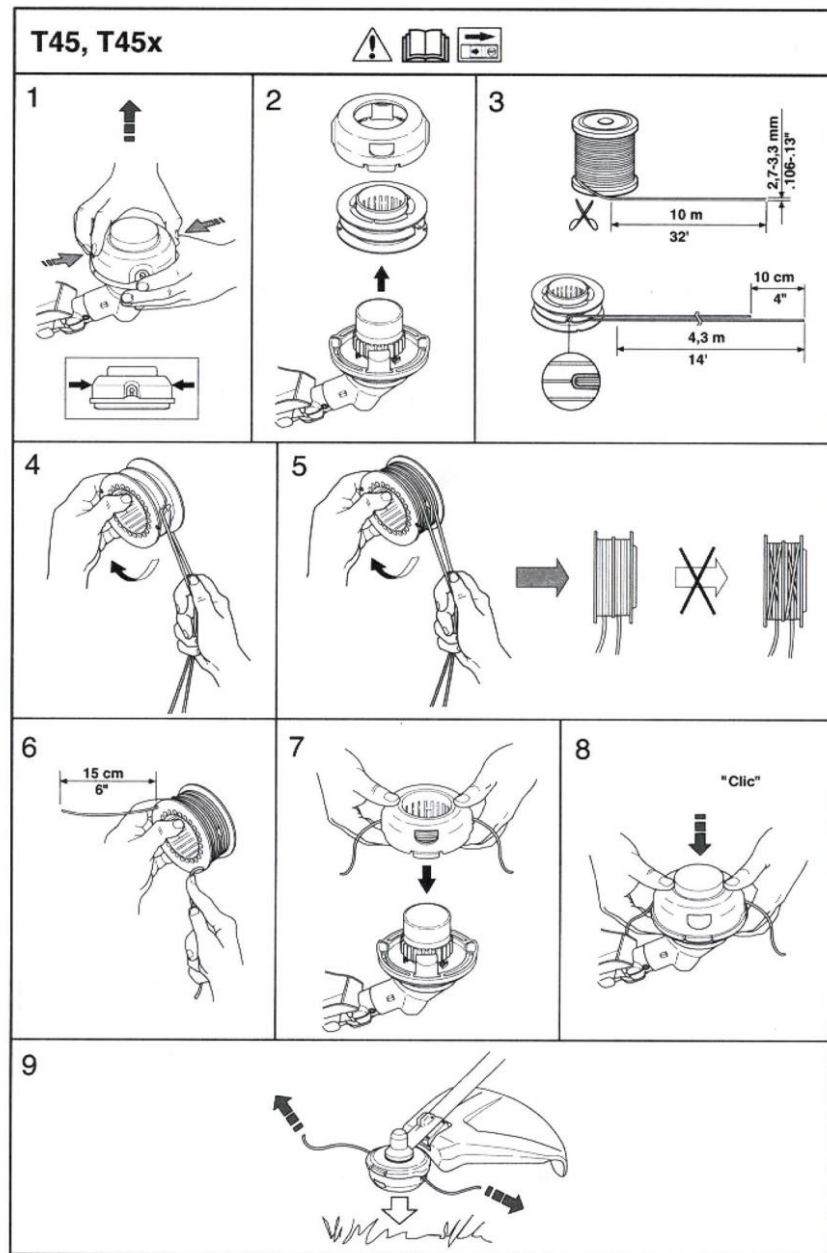
### Cutting equipment

A trimmer head is intended for trimming grass.



### General Rules

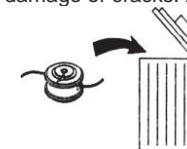




Only use cutting attachments with the guards we recommend! See the page in technical specification.



Check the cutting attachment for damage or cracks. A damaged cutting



attachment should always be replaced.

### Trimmer head

#### IMPORTANT!

Always ensure the trimmer cord is wound tightly and evenly around the drum, otherwise the machine will generate harmful vibration.

- Only use the recommended trimmer heads and trimmer cords. These have been tested by the manufacturer to suit a particular engine size. This is especially important when a fully automatic trimmer head is used. Only use the recommended cutting attachment.



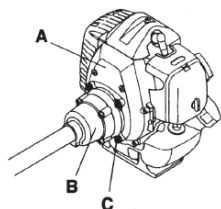
- Smaller machines generally require small trimmer heads and vice versa. This is because when clearing using a cord the engine must throw out the cord radially from the trimmer head and overcome the resistance of the grass being cleared.



### ASSEMBLY

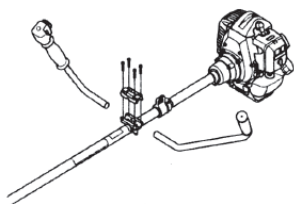
#### Fitting the main body

Connect the engine (A) to the tube (B) with four screws.(C)



#### Assembling the handlebar and throttle

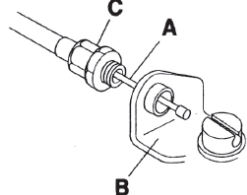
Fit the handlebar in the handlebar clamp on the shaft using four screws!



#### Connecting throttle cable and stop switch wires.

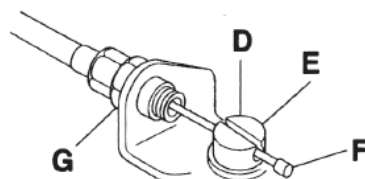
Remove the air filter cover.

Insert the throttle cable (A) through the Carburetor bracket (B), then screw the cable adjuster sleeve (C) into the carburetor bracket fully.



Position the slotted fitting (D) on the

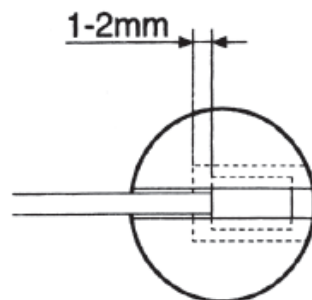
carburetor so the recessed hole (E) for the cable lug (F) is away from the cable adjuster sleeve.



Rotate the carburetor throttle cam and slip the throttle cable through the slot in the slotted fitting, making sure the cable lug drops into the recessed hole.

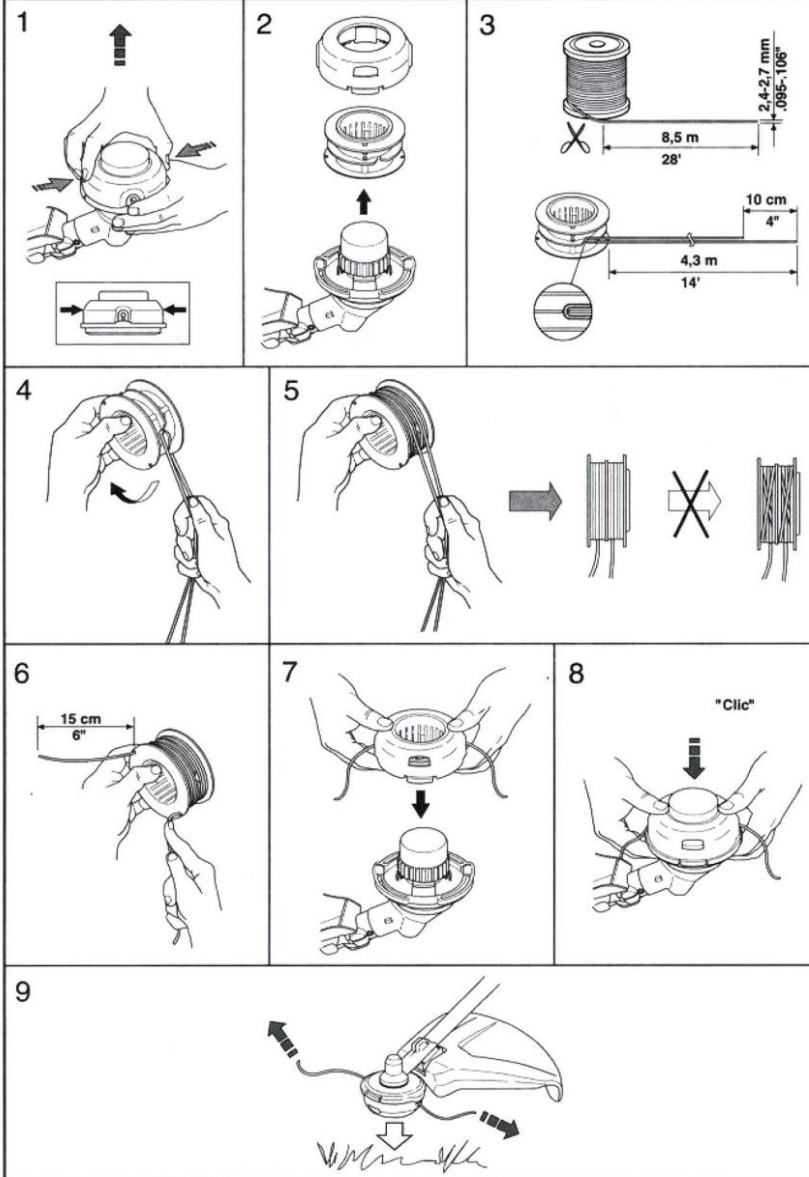
Operate the throttle control a few times to make sure that it works correctly.

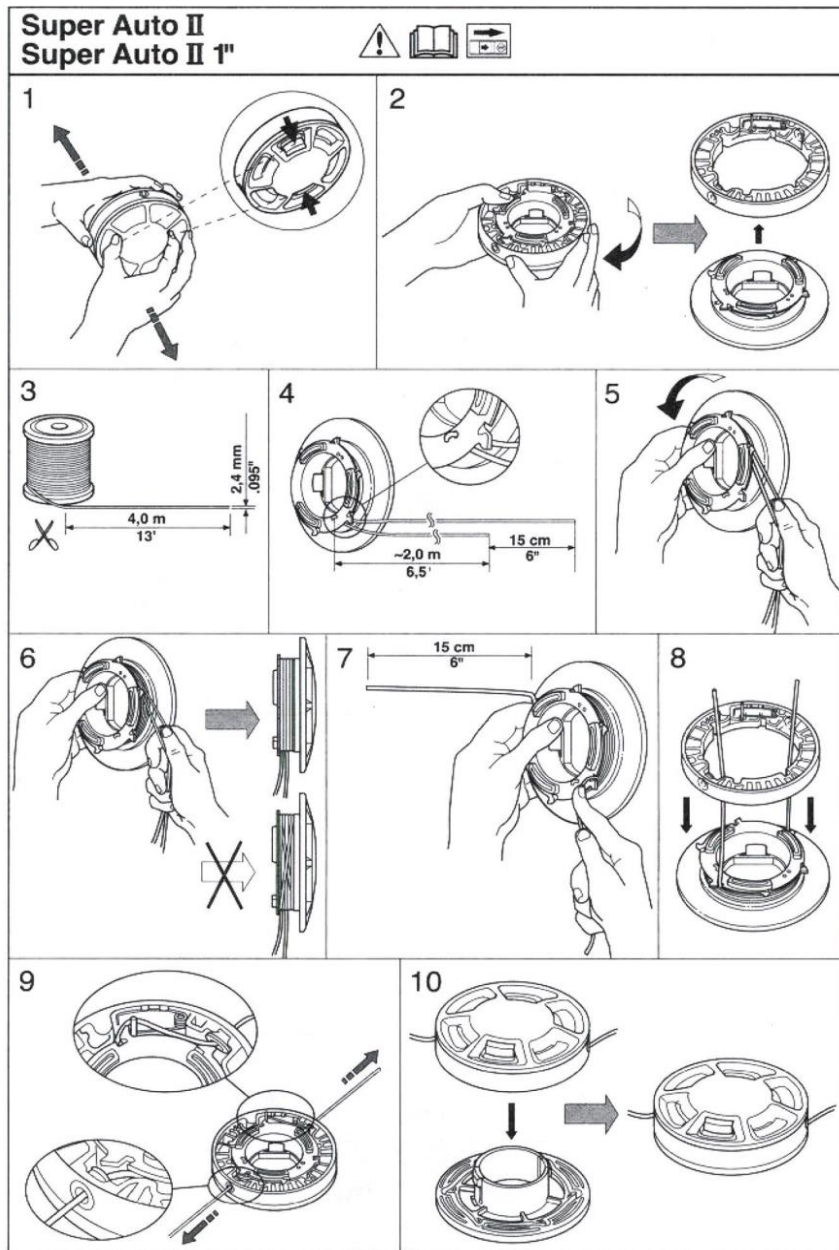
Adjust the cable adjuster sleeve so the stop on the carburetor throttle came just contacts the throttle stop and the cable position keep 1-2 mm play between the cable lug and the Slotted fitting when the throttle control is fully thrust backed.



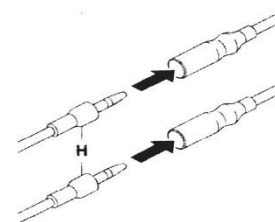
When the throttle cable is adjusted correctly, tighten the locking nut (G).

### T35, T35x



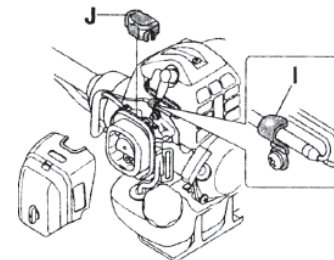


Plug the stop switch wires (H) into the matching connectors from the engine. Note that wire polarity is not important.



Lap and fix the stop switch wires and connectors with clamp(I). Fit the dust cover (J).

Refit the air filter cover



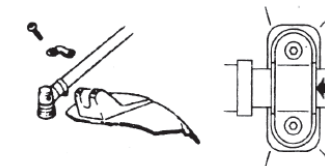
### Fitting trimmer heads

**WARNING! Never use** a cutting attachment without an approved guard. See the chapter on technical data. If an incorrect or faulty guard is fitted this can cause serious personal injury.

### Fitting the cutting attachment guard.

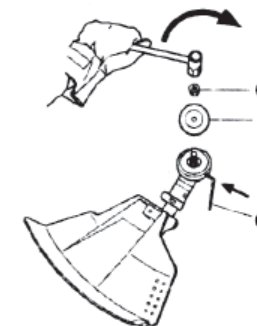
- Attach the cutting attachment guard to the shaft.
- Fix it with 2 bolts.
- Position the cutting attachment guard beside the arrow

mark.

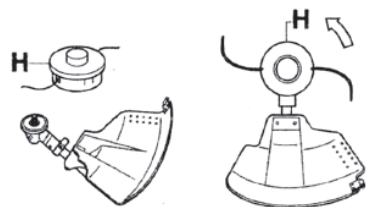


### Fitting the trimmer head

- Turn the blade shaft until one of the holes in the drive disc aligns with the corresponding hole in the gear housing.
- Insert the locking pin (C) in the hole to lock the shaft.
- Remove the locking nut (G) using the socket spanner.
- Remove the support flange (F)

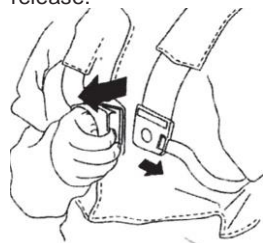


- Screw on the trimmer head (H) in the opposite direction to the direction of rotation.
- Hand tightens it securely.
- To dismantle, follow the instruction in the reverse order.



### Adjusting the harness and clearing saw

**WARNING!** When using a clearing saw it must always be hooked securely to the harness. Otherwise, you will be unable to control the clearing saw safely and this can result in injury to yourself or others. Never use a harness with a defective quick release.



### Quick release

At the front is an easily accessible, quick release. Use this if the engine catches fire or in any other emergency situation that requires you to free yourself from the machine and harness.

### Spreading the load on your shoulders



A well-adjusted harness and machine make work much easier. Adjust the harness for the best working position. Tension the side straps so that the weight is evenly distributed across both shoulders.

### I. Correct height

Adjust the shoulder strap so that the cutting attachment is parallel to the ground.



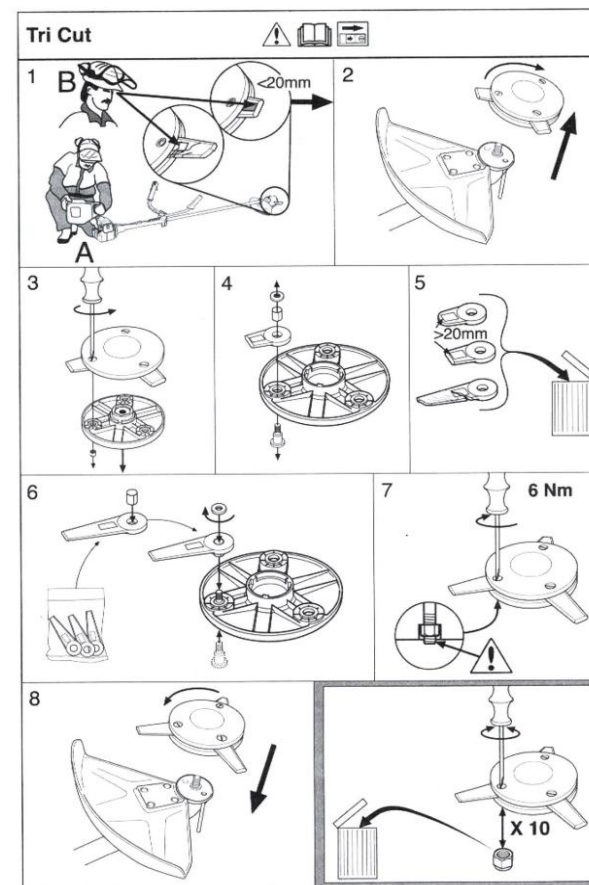
### Correct balance

Let the cutting attachment rest lightly on the ground. Adjust the position of the suspension ring to balance the clearing saw correctly.



Engine starts but does not stay running.		
Check	Possible Cause	Possible action
Fuel tank	Incorrect fuel type	Drain it and use correct fuel.
Carburetor	Engine will not idle properly.	Contact your servicing dealer.
Air filter	Clogged air filter	Clean the air filter.
Fuel filter	Clogged fuel filter	Replace the fuel filter.

### KK-BC2-541



Check the fuel filter for contamination and the fuel hose for cracks or other defects. Replace if necessary.			X
Check all cables and connections.			X
Check the clutch, clutch springs, and the clutch drum for wear. Replace, if necessary, by an authorized service workshop.			X
Replace the spark plug. Check that the spark plug is fitted with a suppressor.			X

### TROUBLE SHOOTING

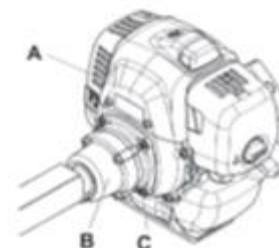
Starting failure		
Check	Possible Cause	Action
Stop button	Stop button	Set the stop switch to the start position.
Starter pawls	Binding pawls	Adjust or replace the pawls.
		Clean around the pawls.
		Contact a servicing dealer.
Fuel tank	Incorrect fuel type	Drain it and use correct fuel.
Carburetor	Adjustment of the idle speed	Adjust the idling speed with the T screw
Sparkling (no spark)	Spark plug contaminated or wet	Make sure that the spark plug is dry and clean.
	Spark Plug gap incorrect	Clean the spark plug. Check that the electrode gap is correct. Make sure that the spark plug is fitted with a suppressor
		Refer to technical data for correct electrode gap
Spark plug	Spark plug loose	Retighten the spark plug
Fuel filter	Clogged fuel filter	Replace the fuel filter

### ASSEMBLY KK-BC2-541

#### Fitting the main body



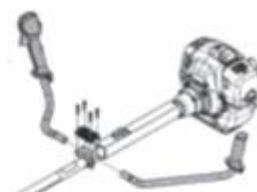
Connect the engine (A) to the tube (B) with four screws (C).



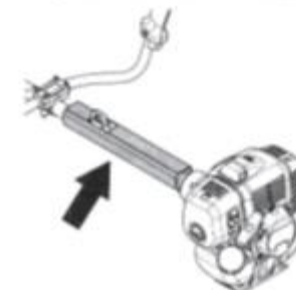
#### Assembling the handlebar and throttle



Fit the handlebar in the handlebar clamp on the shaft using four screws.



Fit the protective sleeve as shown in the diagram.



Remove the screw at the rear of the throttle handle.  
Slide the throttle handle onto the right side of the handlebar, (see diagram).



Align the screw hole in the throttle handle with the hole in the handlebar.  
Refit the screw in the hole in the rear of the throttle handle.  
Screw the screw through the handle and handlebar. Tighten it.



Fit the mounting components as shown.  
Loosely tighten the four screws.



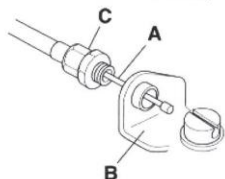
- Put on the harness and hang the machine from the support hook. Now make a final adjustment so that the machine is in a comfortable working position when it hangs from the harness.
- Tighten the screws.



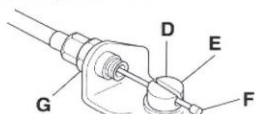
### Connecting throttle cable and stop switch wires



- Remove the air filter cover.
- Insert the throttle cable (A) through the carburettor bracket (B), then screw the cable adjuster sleeve (C) into the carburettor bracket fully.

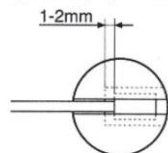


- Position the slotted fitting (D) on the carburettor so the recessed hole (E) for the cable lug (F) is away from the cable adjuster sleeve.

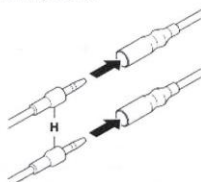


- Rotate the carburettor throttle cam and slip the throttle cable through the slot in the slotted fitting, making sure the cable lug drops into the recessed hole.
- Operate the throttle trigger a few times to make sure that it works correctly.
- Adjust the cable adjuster sleeve so the stop on the carburettor throttle cam just contacts the throttle stop

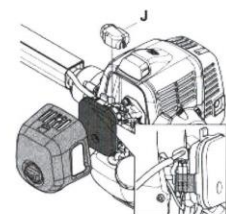
and the cable position keep 1-2 mm play between the cable lug and the slotted fitting when the throttle trigger is fully depressed.



- When the throttle cable is adjusted correctly, tighten the locking nut (G).
- Plug the stop switch wires (H) into the matching connectors from the engine. Note that wire polarity is not important.



- Insert the short circuit cable into the groove on the filter holder.
- Fit the dust cover (J).



- Refit the air filter cover.

## MAINTENANCE

### Maintenance schedule

The following is a list of the maintenance that must be performed on the machine. Most of the items are described in the Maintenance section. The user must only carry out the maintenance and service work described in this Operator's Manual. More extensive work must be carried out by an authorised service workshop.

Maintenance	Daily maintenance	Weekly maintenance	Monthly maintenance
Clean the outside of the machine.	X		
Check that the harness is not damaged.	X		
Check that the handle and handlebar are undamaged and secured correct /.	X		
Check that the stop switch works correctly.	X		
Check that the cutting attachment does not rotate at idle.	X		
Clean the air filter. Replace if necessary.	X		
Check that the guard is undamaged and not cracked. Replace the guard if it has been exposed to impact or is cracked.	X		
Check that the trimmer head is undamaged and not cracked. Replace the trimmer head if necessary.	X		
Check that nuts and screws are tight.	X		
Check that there are no fuel leaks from the engine, tank or fuel lines.	X		
Check the starter and starter cord.		X	
Check that the vibration damping elements are not damaged.		X	
Clean the outside of the spark plug. Remove it and check the electrode gap. Adjust the gap to 0,6-0,7 mm or replace the spark plug. Check that the spark plug is fitted with a suppressor.		X	
Clean the machine's cooling system.		X	
Clean the outside of the Carburetor and the space around it.		X	
Check that the bevel gear is filled three-quarters full of lubricant. Fill if necessary, using special grease.		X	
Clean the muffler.			X

### Fuel filter

#### Bevel gear

The bevel gear is filled **with** the right quantity of grease at the factory. However, before using the machine you should check that the bevel gear is filled three-quarters full of grease. Use UESUGI special grease.

The grease in the bevel gear does not normally need to be changed except if repairs are carried out.

#### Spark plug



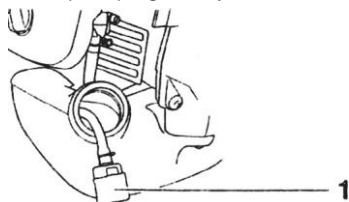
The spark plug condition is influenced by:

- Incorrect carburetor adjustment.
- An incorrect fuel mixture (too much or incorrect type of oil).
- A dirty air filters.

These factors cause deposits on the spark plug electrodes, which may result in operating problems and starting difficulties.

If the machine is low on power, difficult to start or runs poorly at idle speed: always check the spark plug first before taking any further action.

If the spark plug is dirty, clean it and

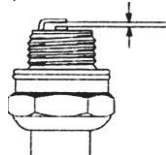


check that the electrode gap is 0,6-0,7 mm. The spark plug should be replaced after about a month in



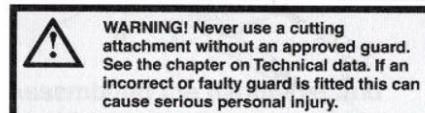
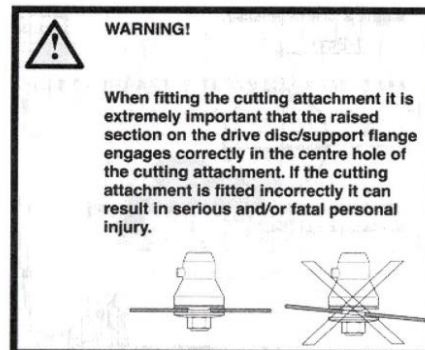
operation or earlier if necessary.

0,6-0,7 mm



**CAUTION!** Always use the recommended spark plug type! Use of the wrong spark plug can damage the piston/cylinder. Check that the spark plug is fitted with a suppressor.

### Fitting blades and trimmer heads

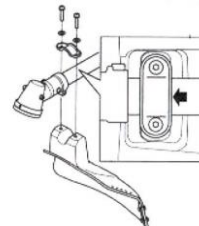


**IMPORTANT!** If a saw blade or grass blade are to be used the machine must be equipped with the correct handlebar, blade guard and harness.

### Fitting the trimmer guard and trimmer head

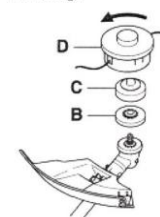


- Fit the correct trimmer guard (A) for use with the trimmer head.
- Fit the guard as shown in the diagram. Tighten securely.



- Position the trimmer guard beside the arrow mark.
- Fit the drive disc (B) and support flange (C) on the output shaft.

- Turn the output shaft until one of the holes in the drive disc aligns with the corresponding hole in the gear housing.
- Insert the locking pin into the hole to lock the shaft.
- Turn the trimmer head counterclockwise when installing.

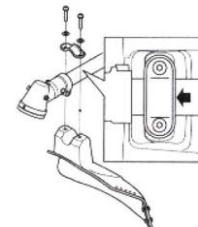


- To dismantle, follow the instructions in the reverse order.

### Fitting a blade guard, grass blade and grass cutter



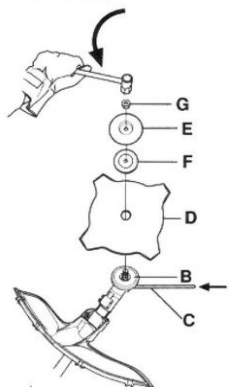
- Fit the guard as shown in the diagram. Tighten securely.



- Position the trimmer guard beside the arrow mark.
- Fit the drive disc (B) on the output shaft.
- Turn the output shaft until one of the holes in the drive disc aligns with the corresponding hole in the gear housing.
- Insert the locking pin (C) in the hole to lock the shaft.
- Place the blade (D), support cup (E) and support flange (F) on the output shaft.
- Fit the nut (G). The nut must be tightened to a torque of 35-50 Nm. Use the spanner in the tool kit. Hold the shaft of the spanner as close to the blade guard as possible. To tighten the nut, turn the spanner in the

### ASSEMBLY

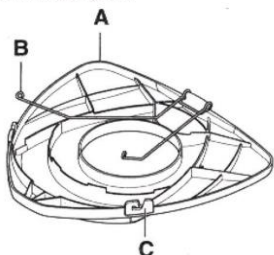
opposite direction to the direction of rotation (Caution! left-hand thread).



### Fitting the transport guard

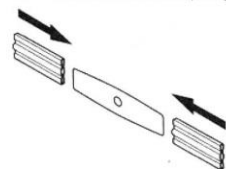


- Insert the blade in the transport guard (A).
- Snap the two fasteners (B) into the slots (C) to secure the transport guard.



### 2-teeth blade

- Insert the blade in the transport guard.



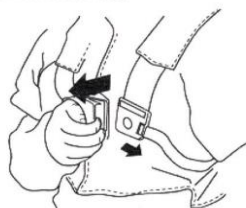
### Adjusting the harness and brush cutter



**WARNING!** When using a brush cutter it must always be hooked securely to the harness. Otherwise you will be unable to control the brush cutter safely and this can result in injury to yourself or others. Never use a harness with a defective quick release.

### Quick release

At the front is an easily accessible, quick release. Use this if the engine catches fire or in any other emergency situation that requires you to free yourself from the machine and harness.



If the mesh is frequently blocked, this can be a sign that the performance of the catalytic converter is impaired.

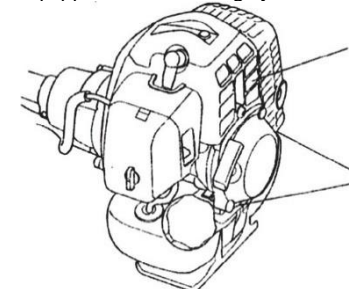
Contact your dealer to inspect the muffler. A blocked mesh will cause the machine to overheat and result in damage to the cylinder and piston.  
**CAUTION!** Never use a machine with a defective muffler.

**WARNING!** Mufflers fitted with catalytic converters get very hot during use and remain so for some time after stopping. This also applies at idle speed. Contact can result in burns to the skin. Remember the risk of fire!

### Cooling system



To keep the working temperature as low as possible the machine is equipped with a cooling system.



The cooling system consists of

1. Cooling fins on the cylinder
2. Air intake.

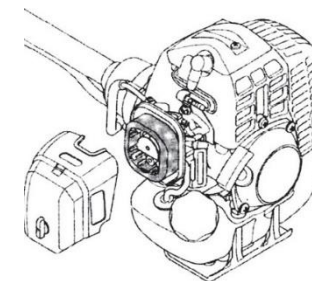
Clean the cooling system with a brush once a week, more often in demanding conditions. A dirty or blocked cooling system results in the machine overheating which causes damage to the piston and cylinder.

### Air filter



The air filter must be regularly cleaned to remove dust and dirt in order to avoid:

- Carburetor malfunctions
- Starting problems
- Loss of engine power
- Unnecessary wear to engine parts.
- Excessive fuel consumption.



Clean the filter every 25 hours, or more regularly if conditions are exceptionally dusty.

### Cleaning the air filter

Remove the air filter cover and take out the filter. Wash it clean in warm, soapy water. Ensure that the filter is dry before refitting it.

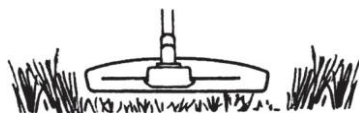
An air filter that has been in use for a long time cannot be cleaned completely. The filter must therefore be replaced with a new one at regular intervals. **A damaged air filter must always be replaced.**



cord lasts longer and to reduce the wear on the trimmer head.

### Cutting

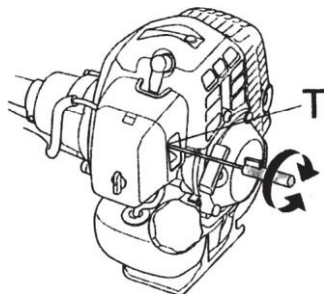
The trimmer is ideal for cutting grass that is difficult to reach using a normal lawn mower. Keep the cord parallel to the ground when cutting. Avoid pressing the trimmer head against the



### Carburetor

#### Adjusting the Idle speed (T)

Check that the air filter is clean. When the idle speed is correct, the cutting attachment should not rotate. If adjustment is required, close (turn clockwise) the idle adjustment screw T, with the engine running, until the cutting attachment starts to rotate. Open (turn anticlockwise) the screw until the cutting attachment stops. The idle speed is correctly set when the engine runs smoothly in all positions, and there is a clear margin to the speed at which the cutting attachment starts to rotate.



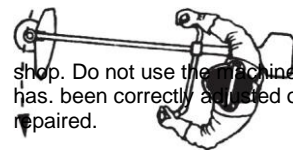
**WARNING!** If the idle speed cannot be adjusted so that the cutting attachment stops, contact your dealer/service work-

ground as this can ruin the lawn and damage the tool.

Do not allow the trimmer head to constantly come into contact with the ground during normal cutting. Constant contact of this type can cause damage and wear to the

### Sweeping

The fan effect of the rotating cord can be used for quick and easy clearing up. Hold the cord parallel to and above the area to be swept and move the tool to and fro.



shop. Do not use the machine until it has been correctly adjusted or repaired.

### Muffler



**CAUTION!** Some mufflers are fitted with a catalytic converter. Check whether your machine is fitted with a catalytic converter.

The muffler is designed to reduce the noise level and to direct the exhaust gases away from the operator. The exhaust gases are hot and can contain sparks, which may cause fire if directed against dry and combustible material.

Some mufflers are equipped with a special spark arrestor mesh. If your machine has this type of muffler, you should clean the mesh at least once a week. This is best done with a wire brush.

On mufflers without a catalytic converter the mesh should be cleaned weekly or replaced if necessary. On mufflers fitted with a catalytic converter the mesh should be checked, and if necessary cleaned, monthly. **If the mesh is damaged it should be replaced.**

### FUEL HANDLING

#### Fuel safety

Never start the machine:

- 1 If you have spilt fuel on it. Wipe off the spillage and allow remaining fuel to evaporate.
- 2 If you have spilt fuel on yourself or your clothes, change your clothes. Wash any part of your body that has come in contact. With fuel. Use soap and water.
- 3 If the machine is leaking fuel. Check regularly for leaks from the fuel cap and fuel lines.

#### Transport and storage

- Store and transport the machine and fuel so that there is no risk of any leakage or fumes coming into contact with sparks or naked flames, for example, from electrical machinery, electric motors, electrical relays/switches, or boilers.
- When storing and transporting fuel always use approved containers intended for this purpose.
- **When storing the machine for long periods the fuel tank must be emptied.** Contact your local petrol station to find out where to dispose of excess fuel.
- Ensure the machine is cleaned and that a complete service is carried out before long-term storage.
- The transport guard must always be fitted to the cutting attachment when the machine is being transported or in



storage.

In order to prevent unintentional starting of the engine, the spark plug cap must always be removed during long-term storage, if the machine is not under close supervision and when performing all service measures.

**WARNING! Take care when handling fuel. Bear in mind the risk of fire, explosion, and inhaling fumes**

#### Fuel

**Caution!** The machine is equipped with a two-stroke engine and must always be run using a mixture of petrol and two-stroke oil. It is important to accurately measure the amount of oil to be mixed to ensure that the correct mixture is obtained. When mixing small amounts of fuel, even small inaccuracies can drastically affect the ratio of the mixture.

**Warning!** Fuel and fuel fumes are highly inflammable and cause serious injury when inhaled or allowed to come in contact with the skin. For this reason, observe caution when handling fuel and make sure there is adequate ventilation.

#### Petrol

**CAUTION!** Always use a quality petrol/oil mixture of at least 90 octane (RON). If your machine is equipped with a catalytic converter.

Always use a good quality unleaded petrol/oil mixture. Leaded petrol will destroy the catalytic converter.

Use low-emission petrol, also known as alkylate petrol, if it is available.

The lowest octane recommended is 90 (RON). If you run the engine on a lower octane grade than 90 so-called knocking can occur. This gives rise to a high engine temperature, which can result in serious engine damage.

When working at continuous high revs a higher-octane rating is recommended.

### Two-stroke oil

For best results and performance use UESUGI two-stroke engine oil, which is specially formulated for our air-cooled two-stroke engines.

Never use two-stroke oil intended for water-cooled engines. sometimes referred to as outboard oil (rated TCW). Never use oil intended for four-stroke engines.

A poor oil quality and/or too high oil/fuel ratio may jeopardies function and decrease the lifetime of catalytic converters.

### Mixing ratio

1:40 (2%) with UESUGI two-stroke oil.

Petrol liter	Two-stroke oil, Liter	
	2 % (1:40)	ml per ltr
1	0.40	40

### Mixing

- Always mix the petrol and oil in a clean container intended for fuel.
- Always start by filling half the amount of the petrol to be used. Then add the entire amount of oil. **Mix** (shake) the fuel mixture. Add the remaining amount of petrol.
- Mix** (shake) the fuel mixture thoroughly before filling the machine's fuel tank.



Do not mix more than one month's supply of fuel at a time. If the machine is not used for some time the fuel tank should be emptied and cleaned.

**Warning!** Neither the operator of the machine nor anyone **else** may attempt to

remove the cut material while the engine is running, or the cutting equipment is rotating, as this can result in serious injury. Stop the **engine** and cutting equipment before you remove material that has wound around the blade shaft as otherwise there is a risk of injury. The bevel gear can get hot during use and may remain so for a while afterwards. You could get burnt if you touch it.

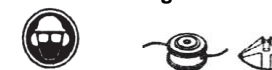
**WARNING!** Watch out for thrown objects. Always wear approved eye protection. Never lean over the cutting attachment guard. Stones, rubbish, etc. can be thrown up into the eyes causing blindness or serious injury. Keep unauthorized persons at a distance. Children, animals, onlookers, and helpers should be kept outside the safety zone of 15 m. Stop the machine immediately if anyone approaches. Never swing the machine around without first checking behind you to make sure no-one is within the safety zone.

### Basic working techniques

Always slow the engine to idle speed after each working operation. Long periods at full throttle without any load on the engine can lead to serious engine damage.

**WARNING!** Sometimes branches or grass get caught between the guard and cutting attachment. Always stop the engine before cleaning.

### Grass trimming with a trimmer head



### Trimming

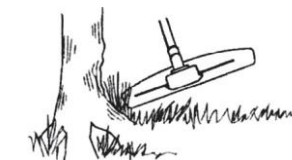
Hold the trimmer head just above the ground at an angle. It is the end of the cord that does the work. Let the cord work at its own pace. Never press the cord into the area to be cut.



The cord can easily remove grass and weeds up against walls, fences, trees, and borders, however it can also damage sensitive bark on trees and bushes, and damage fence posts. Reduce the risk of damaging plants by shortening the cord to 10-12 cm and reducing the engine speed.

### Clearing

The clearing technique removes all unwanted vegetation. Keep the trimmer head just above the ground and tilt it. Let the end of the cord strike the ground around trees, posts, statues, and the like. **CAUTION!** This technique increases the wear on the cord.



The cord wears quicker and must be fed forward more often when working against stones, brick, concrete, metal fences, etc., than when coming into contact with trees and wooden fences. When trimming and clearing you should use less than a full throttle so that the

### OPERATING TECHNIQUES

#### General working instructions

##### IMPORTANT!

This section describes the basic safety precautions for working with



clearing saws and trimmers. If you encounter a situation where you are uncertain how to proceed you should ask an expert. Contact your dealer or your service workshop. Avoid all usage which you consider to be beyond your capability. You must understand the difference between forestry clearing, grass clearing and grass trimming before use.

#### Basic safety rules

Look around you:

To ensure that people, animals, or other things cannot affect your control of the machine.

To ensure that people, animals, etc., do not come into contact with the cutting attachment or loose objects that are thrown out by the cutting attachment.

**CAUTION!** Do not use the machine unless you are able to call for help in the event of an accident.

Inspect the working area. Remove all loose objects, such as stones, broken glass, nails, steel **wire**, string, etc. that could be thrown out

or become wrapped around the cutting attachment.

Do not use the machine in bad weather, such as dense fog, heavy rain, strong wind, intense cold, etc. Working in bad weather is tiring and often brings added risks, such as icy ground, unpredictable felling direction, etc.

**Make** sure you can move and stand safely. Check the area around you for possible obstacles (roots, rocks, branches, ditches, etc.) in case you have to move suddenly. Take great care when working on sloping ground.

Keep a good balance and a firm foothold. Always hold the machine with both hands. Hold the machine on the right side of your body.



Keep the cutting attachment below waist level.

Switch off the engine before moving to another area. At the transport guard before carrying or transporting the equipment any distance.

Never put the machine down with the engine running unless you have it in clear sight.

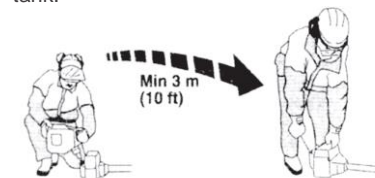
### Fueling

#### WARNING!

- Taking the following precautions, will lessen the risk of fire:
- Do not smoke or place hot objects near fuel.
- Always shut off the engine before refueling.
- Always stop the engine and let it cool for a few minutes before refueling.
- When refueling, open the fuel cap slowly so that any excess pressure is released gently.
- Tighten the fuel cap carefully after refueling.

- Always move the machine away from the refueling area before starting

Always use a fuel container with an anti-spill valve. Clean the area around the fuel cap. Contamination in the tank can cause operating problems. Ensure that the fuel is well mixed by shaking the container before filling the tank.



### STARTING AND STOPPING

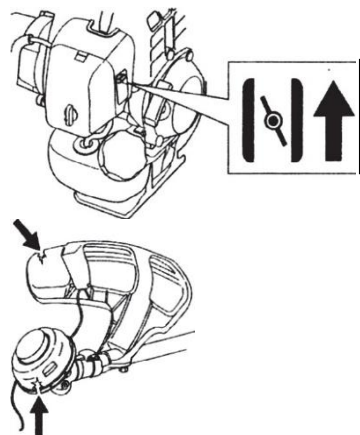
#### Check Before starting.



Never use the machine without a guard nor with a defective guard.

All covers must be correctly fitted and undamaged before you start the machine.

Check that the trimmer head and trimmer guard are not damaged or cracked. Replace the trimmer head or trimmer guard if they have been exposed to impact or are cracked.



#### Starting and stopping



**WARNING!** The complete clutch cover and shaft must be fitted before the machine is started, otherwise the clutch can come loose and cause personal injury.

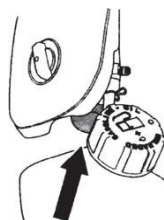
Always move the machine away from the refueling area before starting. Place the machine on a flat surface. Ensure the cutting attachment cannot come into contact with any object.

**Make** sure no unauthorized persons are in the working area, otherwise there is a risk of serious personal injury. The safety distance is 15 meters.

#### Starting



**Primer bulb:** Press the air purge repeatedly until fuel begins to fill the bulb. The bulb need not be completely filled.



**Choke:** Set the choke control in the choke position

**WARNING! When** the engine is started with the choke in either the choke or start throttle positions the cutting attachment will start to **rotate** immediately

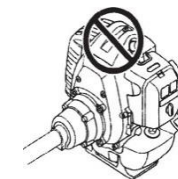
Hold the body of the machine on the ground using your left hand (**CAUTION!** Not with your foot!). Grip the starter handle, slowly pull out the cord with your right hand until you feel some resistance (the starter pawls grip), now quickly and powerfully pull the cord. **Never twist the starter cord around your hand.**

Repeat pulling the cord until the engine starts. When the engine starts, return choke control to run position and apply full throttle; the throttle will automatically disengage from the start setting.

**CAUTION!** Do not pull the starter cord all the way out and do not let go of the starter handle when the cord is fully extended. This can damage the machine.



**CAUTION!** Do not put any part of your body in the marked area. Contact can result in burns to the skin, or electrical shock if the sparkplug cap has been damaged. Always wear gloves. Do not use a machine with a damaged spark plug cap.



**Throttle control position for starting.**



Set the throttle control to the idling position.

#### Stopping



Stop the engine by switching off the ignition.

