

OUR PRODUCTS RANGE

ANGLE GRINDER

MARBLE CUTTER

CIRCULAR SAW

CUT-OFF MACHINE

CONCRETE VIBRATOR

DEMOLITION HAMMER

ROTARY HAMMER

IMPACT DRILL

ARC WELDING MACHINE

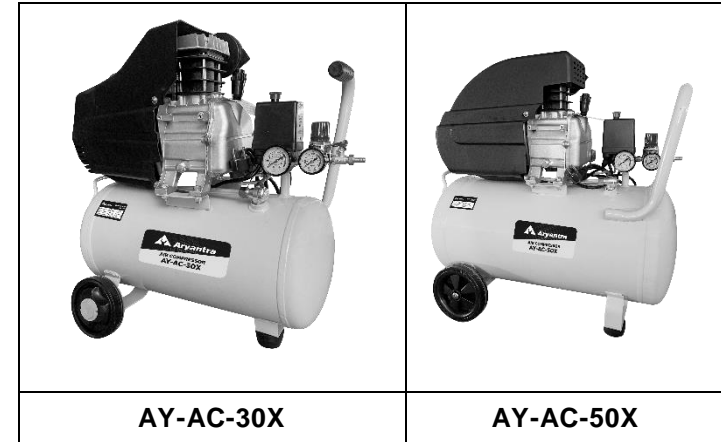
CHAINSAW


App is available on


 Scan the QR code to download
KisanKraft App
 076760 65555

 www.aryantra.com
 info@aryantra.com

User Manual



KisanKraft Limited

 Sri Huchhanna Tower, #4, 1st Main, 7-A Cross, Maruthi Layout, Dasarahalli,
 HAF Post, Hebbal, Bangalore 560024, Karnataka, INDIA

- ◆ Bangalore (HO) ◆ Ahmedabad ◆ Bhopal ◆ Bhubaneswar ◆ Coimbatore
- ◆ Guwahati ◆ Hubli ◆ Hyderabad ◆ Nellore ◆ Jaipur
- ◆ Karnal ◆ Kolkata ◆ Lucknow ◆ Pune ◆ Raipur


 Scan the QR code to download
KisanKraft App

App is available on



CONTENTS

INTRODUCTION	3
SAFETY GUIDELINES	3
TECHNICAL SPECIFICATION	7
OPERATION INSTRUCTIONS	7
TROUBLESHOOTING	10
PART DIAGRAM	11

HO: Bangalore (Karnataka)	Ahmedabad (Gujarat)	Bhopal (Madhya Pradesh)
Sri Huchhanna Tower # 4, 1st Main, 7-A Cross, Maruthi Layout, Dasarahalli, HAF Post, Hebbal, Bangalore - 560 024, Karnataka Phone: 080 68357800 Email: info@kisankraft.com GSTIN: 29AACCK6445J1Z6	G-11, Karnavati Estate, Sarkhej - Sanand Road, Besides Hotel Orange Inn, Ahemadabad - 382 210, Gujarat Phone: +91 92280 00760 Email: info.ahmedabad@kisankraft.com GSTIN: 24AACCK6445J1ZG	Shed #1, Near C-21 Mall, Hoshangabad Road, Bhopal - 462 026, Madhya Pradesh Phone: +91 70242 11672 Email: info.bhopal@kisankraft.com GSTIN: 23AACCK6445J1ZI
Bhubaneswar (Odisha)	Coimbatore (Tamil Nadu)	Guwahati (Assam)
Plot No. 2509, Near Toyota Showroom, Nuagada, PO-Telengapentha, PS- Banapur, Cuttack, Sadar - 753 011, Odisha Phone: 0671 2959 166 Email: info.bhubaneswar@kisankraft.com GSTIN: 21AACCK6445J1ZM	291/7, Kothari Nagar, MTP Road, Opp. Sai Hospital, Vadamadurai Post, Coimbatore - 641 017, Tamil Nadu Phone: 0422 2460 199 Email: info.coimbatore@kisankraft.com GSTIN: 33AACCK6445J1ZH	Ground Floor, Word No. 06, Near LP School, Paschim, Boragaon Post, Kamrup, Guwahati - 781 035, Assam Phone: 0361 2960 299 Email: info.guwahati@kisankraft.com GSTIN: 18AACCK6445J1Z9
Hubli (Karnataka)	Hyderabad (Telangana)	Jaipur (Rajasthan)
LG-2, Akshay Enclave, Kusugal Road Keshwapur, Hubli - 580 023, Karnataka Phone: 0836 2287 877 Email: info.hubli@kisankraft.com GSTIN: 29AACCK6445J1Z6	Plot No. 7, H No. 5-5-35/234, Shaktipeetam, Prashantinagar, I.D.A, Kukatpalli, Hyderabad - 500 072, Telangana Phone: 040 4025 0114 Email: info.hyderabad@kisankraft.com GSTIN: 36AACCK6445J1ZB	No. 69-A, Sudershanpura Industrial Area, Bais Godam, Jaipur - 302 006, Rajasthan Phone: 0141 2219 128 Email: info.jaipur@kisankraft.com GSTIN: 08AACCK6445J1ZA
Karnal (Haryana)	Kolkata (West Bengal)	Lucknow (Uttar Pradesh)
Near Shani Mandir, Bypass GT Road, Karnal - 132 001, Haryana Phone: +91 70822 18201 Email: info.karnal@kisankraft.com GSTIN: 06AACCK6445J1ZE	Sadananda Ind. Estate, Dag No. 1183, Mouza-Balitikuri & Dag No.1504, Dharsa-Balitikuri, Bakkultala, Howrah - 711 113, West Bengal Phone: 033 2955 0403 Email: info.kolkata@kisankraft.com GSTIN: 19AACCK6445J1Z7	Plot No. E-45, Phase-2, Transport Nagar, Kanpur Road, Lucknow - 226 012, Uttar Pradesh Phone: 0522 2978 200 Email: info.lucknow@kisankraft.com GSTIN: 09AACCK6445J1Z8
Nellore (Andhra Pradesh)	Pune (Maharashtra)	Raipur (Chhattisgarh)
Podalakur Sangam Road, Opp. Sudalagunta Sugar Factory, Prabhagiripatnam Village Podalakur Mandal, Sri Potti Sreeramulu, Nellore - 524 345, Andhra Pradesh Phone: 080 2217 8200 Email: info@kisankraft.com GSTIN: 37AACCK6445J1Z9	S.R.No. 133, Village – Uruli Devanchi, Taluka – Haveli, District – Pune - 412 308, Maharashtra Phone: +91 84829 75446 Email: info.pune@kisankraft.com GSTIN: 27AACCK6445J1ZA	Block No. 5, Plot No. W1A-04, Dr. Khoob Chand Baghel, Transport Nagar, Rawabhata, Raipur - 492 010, Chhattisgarh Phone: +91 91099 98071 Email: info.raipur@kisankraft.com GSTIN: 22AACCK6445J1ZK

Wide Range of Products for Every Need



For more information give **MISSED CALL: 07676065555**



Many of our products have BIS: ISI certification.



IMPORTANT NOTICE: THINGS TO DO BEFORE OPERATING YOUR NEW COMPRESSOR FOR THE FIRST TIME

1. On the top front of the compressor you will find a white plastic shipping plug inserted into the Oil Filter Hole. Remove the shipping Plug and replace by pressing the red Oil Filter Plug (supplied in the parts bag in to the Oil filter Hole.
2. Also, supplied in the parts bag you will find a black Air Breather Assembly. Screw the assembly into the hole on the side and at the top of the compressor head.
3. Using the Sight-Glass built into the lower front area of the compressor (just behind the Regulator), check the Oil Level, it should be at the halfway mark on the Sight glass for normal operation. If it is necessary to add oil, please use any standard air compressor oil available at Home Centers and other major retailers.
4. There are two Air Outlet Fittings on the Regulator. Air Outlet fittings on the Regulator. Air flow for one fitting is operated by turning the Regulator Handle. The other is a free flow directly from the tank. Screw either a metal cap or a quick-coupler (not supplied) onto the free-flowing fitting before starting the Compressor. Use nylon thread seal tape when working with air fittings to prevent leakage.

INTRODUCTION

Read this manual carefully before operating or servicing this, air compressor to familiarize yourself with proper safety, operation and maintenance procedure. **FAILURE TO COMPLY WITH INSTRUCTIONS IN THIS MANUAL COULD RESULT IN PERSONAL INJURY, PROPERTY DAMAGE, AND/OR VOIDING OF YOUR WARRANTY.** Following the instructions in this manual will provide a longer and safer service life for your air compressor.

SAFETY GUIDELINES

DANGER-AN IMMEDIATE HAZARD THAT WILL CAUSE SERIOUS INJURY OR LOSS OF LIFE.

1. TO REDUCE THE RISK OF FIRE OR EXPLOSION, NEVER SPRAY FLAMMABLE LIQUIDS IN A CONFINED AREA. It is normal for the motor and pressure switch to produce sparks while operating. If sparks come into contact with vapors from gasoline or other solvents, they, may ignite causing fire or explosion. Always operate the compressor in a well-ventilated area. Do not smoke while spraying. Do not spray where sparks or flame are present, Keep compressor as far from spray area as possible.
2. The solvents Trichloroethane and Methylene Chloride can chemically react with aluminum used in paint spray guns, paint pumps, etc. and cause an explosion. If you are using these solvents, use only stainless steel spray equipment. This does not affect your air compressor, but many affect the equipment being used.

- Never directly inhale the compressed air produced by a compressor. It is not suitable for breathing purpose.

WARNING-A POTENTIAL HAZARD THAT COULD CAUSE SERIOUS INJURY OR LOSS OF LIFE.

- Do not weld on the air tank of this compressor. Welding on the air compressor tank strength and cause an extremely hazardous condition. Welding on the tank in any manner will void the warranty.
- Never use an electric air compressor outdoors when it is raining or on a wet surface, as it may cause an electric shock.
- This unit starts automatically. Always shut off the compressor remove the plug from the outlet. And bleed all pressure from the system before servicing the compressor and when the compressor is not in use.
- Check the manufacturer's maximum pressure rating for air tools and accessories. Compressor outlet pressure must be regulated so as to never exceed the maximum pressure rating of the tool.
- High temperatures and moving parts are present under the shroud. To prevent burns or other injuries. DO NOT operate with the shroud removed. Allow the compressor parts to cool before handling or servicing.
- Be certain to read all labels when you are spraying paints or toxic materials and follow the safety instructions. Use a respirator mask if there is a chance of inhaling anything you are spraying. Read all instructions and be sure that your respirator masks will protect you.
- Always wear safety goggles or glasses when using an air compressor. Never point any nozzle or sprayer toward a person or any part of the body.
- Do not adjust the pressure switch or relief valve for any reason. Doing so voids all warranties. They have been pre-set at the factory for the maximum pressure of the unit.

CAUTION A POTENTIAL HAZARD THAT MAY CAUSE MODERATE INJURY OR DAMAGE TO EQUIPMENT.

- Drain the moisture from the tank on a daily basis. A clean dry tank will help prevent corrosion.
- Pull the pressure relief valve ring daily to ensure that the valve is functioning properly and to clear the valve any possible obstructions.
- To provide proper ventilation for cooling the compressor must be kept a minimum of 31cm (12 inches) from the nearest wall, in a well-ventilated area.
- Fasten the compressor down securely if transporting is necessary. Pressure must be released from the tank before transporting.
- Protect the air hose and electric cord from damage and puncture. Inspect them weekly for weak or worn spots and replace if necessary.

KisanKraft has a large range of products to serve the farmers. A list of our products is given below:

<p>Brush Cutters and Accessories</p> <ul style="list-style-type: none"> Brush Cutter/Power Weeder Backpack Brush Cutter Tea Pruner Pole pruner with Engine Reaper Attachment Blades-Circular Blades (2 & 3 points) Baffle Nylon Rope Tap & Go <p>Chainsaws</p> <ul style="list-style-type: none"> Petrol Chainsaw Electric Chainsaw Chain Sharpening Machine <p>Engines and Water Pumps</p> <ul style="list-style-type: none"> Engine –Diesel-(Horizontal) Engine –Diesel(Vertical) Engine-Kerosene Water Pump with Petrol Engine Water Pump with Kerosene Engine Water Pump with Diesel Engine <p>Hand Tools</p> <ul style="list-style-type: none"> Secateurs Folding Saw Garden Rake Garden Shovel Hedge Shear Lopper Telescopic Hedge Shear Telescopic Lopping Shear Tree Pruner Telescopic Steel Pipe & Fruit Picker Bag Sheep Shear <p>Garden Tools</p> <ul style="list-style-type: none"> Electric Pressure Washer Hedge Trimmer Lawn Mower (Electric, Petrol & Manual) Leaf Blower 	<p>Cultivators and Accessories</p> <ul style="list-style-type: none"> Petrol and Diesel <p>Sprayers and Accessories</p> <ul style="list-style-type: none"> Battery Sprayer Portable Power Sprayer Trolley Sprayer Manual Knapsack Sprayer Manual Pressure Sprayer Rose Cans Hose Crimping Machine HTP Sprayer HTP Delivery Hose HTP Hose Reel HTP Stand HTP Gun / Lance(Brass Rod) Knapsack Power Sprayer Mister / Duster / Granules Spreader HTP Sprayer Set with Diesel Engine HTP Sprayer Set with Kerosene Engine Fogging Machine <p>Milking Machine</p> <ul style="list-style-type: none"> Wood Shredder Fodder Ensiling Chaff Cutter Fodder Grinder Chaff Cutter Fodder Mini Chaff Cutter <p>Harvester</p> <ul style="list-style-type: none"> Maize Sheller Maize Sheller + Dehusker Maize Combine Harvester Onion Digger Carlotta Italy Tea Leaf Harvester Sugarcane Combine Harvester Sugarcane Leaf Stripper <p>Transplanter and Post Hole Digger</p> <ul style="list-style-type: none"> Paddy Transplanter (2 & 8 Rows) Transplanter-Vegetable & Tobacco Post Hole Digger(4" to 14" Augers)
--	--

PARTS LIST

No	Designation	Qty.	No	Designation	Qty.
1	Bolt M8x1 10	4	29	Nut M8	1
2	Cylinder head	1	30	capacitance	1
3	Cylinder head gasket	1	31	Fan	1
4	Valve plate	1	32	Circlip	1
5	Valve gasket	1	33	Fan cover	1
6	Cylinder	1	34	Circlip	a
7	Cylinder gasket	1	35	Locating pin	2
8	Piston ring	3	36	Valve clack	1
9	Piston pin	1	37	Air filter	1
10	Piston	1	38	Connector	i
11	Screw M5x14	4	39	Discharge pipe	1
12	Handhold	1	40	Release pipe	1
13	Breath pipe	1	41	Pressure switch	1
14	Connecting rod	1	42	Pressure gauge	1
15	Rubber gasket	1	43	Outlet valve	2
16	S crew M5x14	6	44	Switch bracket	1
17	Crank case cover	1	45	Connector nut	1
18	Oil leveler washer	1	46	Discharge connect	1
19	Oil leveler	1	47	Unilateralism valve	1
20	Bolt M8x22—right	1	48	Air tank	1
21	Crank	1	49	Bolt M8x25	1
22	Crank case	1	50	Washer foot	1
23	Motor	1	51	Washer 8	1
24	Sealing ring	1	52	Nut 8	1
25	Bearing 6204RS	1	53	Drain cock	1
26	Bearing 6202RS	1	54	Wheel	2
27	Corrugated washer	1	55	cover piece	2
28	Motor bracket	1			

LIST OF GOODS		
No	Designation	Qty
1	Air compressor	1
2	Air filter	1
3	Breath pipe	1
0	Rubber gasket	1
5	Operation manual	1

WARNING!

DISCONNECT POWER AND RELEASE ALL PRESSURE FROM THE SYSTEM BEFORE ATTEMPTING TO INSTALL, SERVICE, RELOCATE OR PERFORM ANY MAINTENANCE.

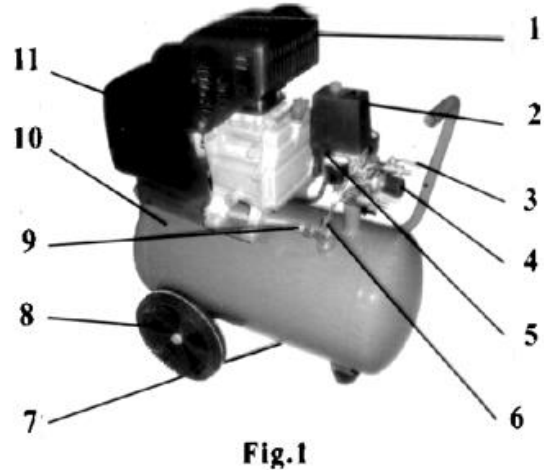
1. Follow all local electrical and safety codes as well as National Electrical Codes (NEC) and Occupational safety and health act (SHA)
2. Electric motors and starters must be securely and adequately grounded using a three-pronged outlet.

CAUTION!

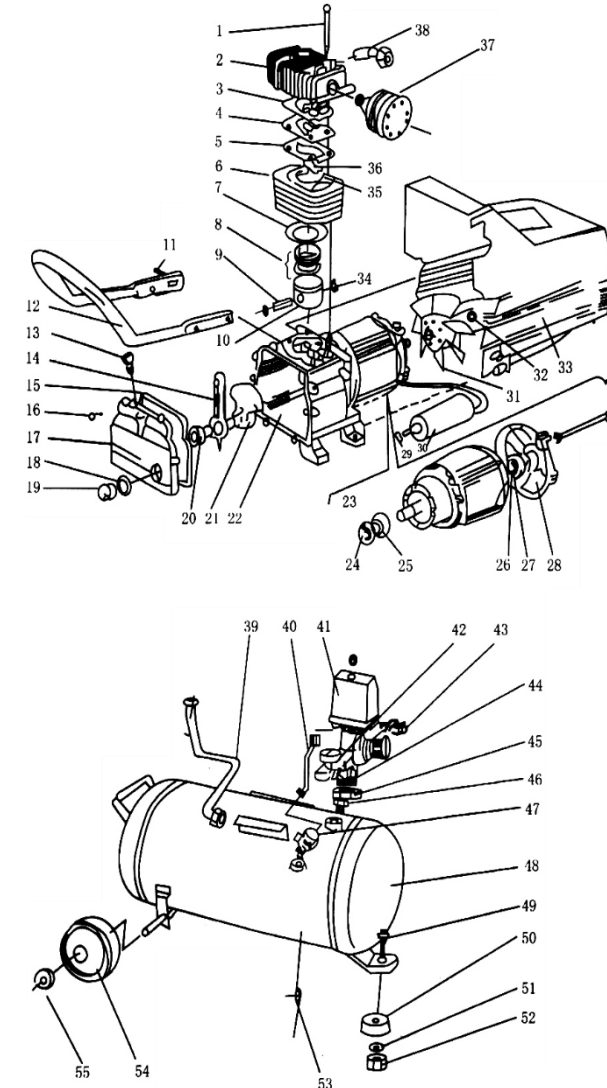
Never use an extension cord with this product. Use additional air hose instead of an extension cord to avoid power loss and permanent motor damage. Use of an extension cord voids the warranty.

BRIEF DESCRIPTION

This micro air compressor is of novel design and execute workmanship. Having the advantages of compact constructing fine appearance, light weight easy operation high safety and low noise it can be widely used in machinery, chemical industry, spray and decoration, automatic control system and other fields where compressed air is required.

GENERAL VIEW AND MAIN COMPONENTS (Fig.1)


1. Main Compressor
2. Pressure switch
3. Outlet valve
4. Regulating valve
5. Pressure gauge
6. One-way valve
7. Drain Couch
8. Wheel
9. Discharge pipe
10. Air tank

PART DIAGRAM


TROUBLESHOOTING

Tablet 2

Trouble	Possible causes	Remedies
Motor unable running, Running too Slow or Getting hot	1) Fault in line. or voltage insufficient 2) Power wire too thin or too long 3) Fault in pressure switch 4) Fault in motor 5) Sticking of main compressor	1) Check the line 2) Replace the wire 3) Repair or replace 4) Repair or replace 5) Check and repair
Sticking of main compressor	1) Moving parts burnt due to the oil insufficient 2) Moving parts damaged, or stuck by foreign body.	1) Check crankshaft, bearing. Connecting rod. Piston, piston ring. Etc. and replace if necessary.
Terrible shake Or abnormal noise	1) Connecting part loosed 2) Foreign body got into main compressor 3) Piston knocking valve seat 4) Moving parts seriously worn	1) Check and retighten 2) Check and clean away 3) Replace with thicker Paper gasket 4) Repair or replace
Pressure insufficient or discharge capacity decreased	1) Motor running too slow 2) (2)Air filter choked up 3) Leakage of safety sake 4) Leakage of discharge pipe 5) Sealing gasket damaged 6) (Wake plate damaged, carbon buildup or stuck 7) Piston ring and cylinder worn of damaged	1) Check and remedy 2) Clean or replace the cartridge 3) Check and adjust 4) Check and repair 5) Check and replace 6) Replace and clean 7) Repair or replace
The oil Consumption too excessive	1) Oil level too high 2) Breath pipe choked up 3) Piston ring and cylinder wont or damaged	1) Keep the level within 2) Check and clean 3) Repair or replace

TECHNICAL SPECIFICATION

Parameters	AY-AC-30X	AY-AC-50X
Aluminium motor	IHP	2HP
Motor size: ϕ 135*128	220-240V/110-120V	
Aluminium motor	50Hz/60Hz	
Motor size: ϕ 135*128	7.SA/17A	
Aluminium motor	2850r.p.rtl/3400r.p.	
Remarks	motor size: ϕ 135*98 Aluminium motor	motor size: ϕ 135*128 Aluminium motor

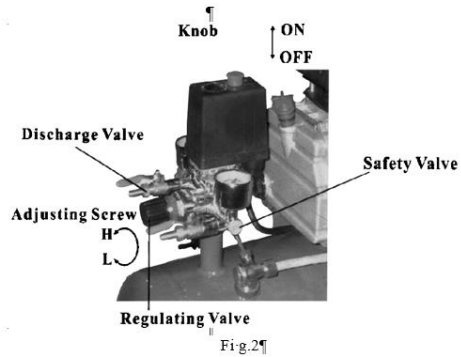
OPERATION INSTRUCTIONS

PREPARATION FOR STARTING

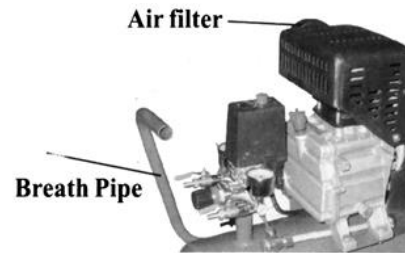
1. The place to start the compressor should be clean dry and ventilated.
2. Keep the use voltage within z3No of rated.
3. Keep little oil level in the red circle leveler
4. Recommend compressor oil use SAE30 or L-DAB 1110 over 1 ml and use SAE10 or L-DABf8 below 10 degree C.
5. Open the outlet valve set the knob of pressure switch in position on (Fig.2), let the compressor run few minutes with no load to ensure lubricating the moving pairs before regular service.

OPERATION AND ADJUSTMENT

1. The compressor is controlled by pressure switch when normal working. It can be stopped automatically as pressure increasing to the maximum and restart as pressure decreasing to the minimum. The rated pressure has been adjusted when produced. Don't change it carelessly. As soon as motor switched off the compressed air in the discharge pipe should be released through the release valve under the switch. This is the necessary condition for restart or the motor will be damaged. The rated pressure can be adjusted by turning the bolt of the switch (Fig.2).
2. The input pressure of compressed air will be adjusted by regulating valve (Fig.2.)
3. When the compressor is running need to be stopped, only set knob of pressure switch in position off.


CAUTIONS

1. Put the cover off first and put on the breath pipe and air filter before the compressor run (Fig.3)
2. Never unscrew any connecting part when the tank is in pressure condition.
3. Never disassemble any electrical part before disconnecting the plug.
4. Never adjust the safety valve carelessly.
5. Never use the compressor in place where voltage is too low or too high.
6. Never use electric wire more than 5m long with less than the section shown in table 1.
7. Never disconnect the plug to stop compressor set the switch knob in position off instead.


Fig.3

8. If the release valve doesn't work as motor stopped, find the cause immediately so as not to damage motor.
9. Lubricating oil must be clean oil level should be kept in the red circle of leveler
10. Disconnect the plug to cut off power supply and open the outlet valve

Table 1

Motor output (HP/kw)	220V/230V/240V single-phase		110V/120V single-phase	
	Wire (mm ²)	Fuse (A)	Wire (mm ²)	Fuse (A)
1/0.75	1.5	16	2.0	20
1.5/1.1	1.5	16	2.5	20
2/1.5	1.5	16	2.5	20
2.5/2	2.0	20	2.5	20

MAINTENANCE

1. Clean crankcase and renew lubricating oil after the first 10 working hours
2. Clean the oil level after every 20 working hours and replenish if necessary (Fig.4)
3. Open drain cock under the tank to exhaust condensate after every 60 working hours.
4. Clean crankcase and renew the oil clean air filter and check safety valve and pressure gauge.