

Product	Agricultural Inter-Cultivator	KisanKraft Invoice Date	
Brand	KisanKraft	KisanKraft Invoice No.	
Model	☐ KK-IC-210P		
WARRANTY PERIOD	6 MONTHS	FOR THE SPECIFIED PERIOD FROM THE DATE OF SALE OR DELIVERY WHICHEVER IS EARLIER.	
Dealer's Invoice Date		Dealer's Invoice No.	
Buyer's Info (Name, Address, Phone, etc.):		Dealer's Stamp (Address, Phone, TIN, etc.):	
Buyer's Sign		Dealer's Sign	

Warranty Policy

What is covered: KisanKraft Limited and its manufacturers warrant this product to be free from defects in material or workmanship. All parts defective in material and workmanship are covered.

This warranty will only cover defects arising under normal usage.

This warranty is limited to repair or replacement by KisanKraft Limited or its manufacturers of such parts as appear to KisanKraft or its manufacturers, upon inspection, to be defective in material and/or workmanship. KisanKraft or its manufacturers make no warranty with respect to items not manufactured or sold by them. No onsite warranty is provided by KisanKraft Limited or its manufacturers. Defective items must be brought/sent to our Authorized Dealer or KisanKraft Limited's office for service.

What is not covered: The *warranty shall become null and void* and neither KisanKraft Limited nor any of its manufacturers, nor its authorized dealers assume any responsibility, if the failure was caused by the following:

(1) Operation of product with incorrect fuel or lubricants, (2) Incorrect usage of machine or misuse, (3) Lack of maintenance, (4) Negligence, (5) Accident or physical damage, (6) Repairs made by unauthorized parties and/or with unauthorized parts, (7) Improper set up, adjustments, tampering or altered products (8) Any modification to the product what-so-ever.

Important: (1) Normal maintenance and adjustments to the product is the responsibility of the customer. (2) Normal wear and tear are not covered under warranty. (3) Rubber/plastic parts and consumables such as blades, clutch and clutch-bell, sparkplugs, nylon line, air-filters, fuel-filters, oil seals and gaskets etc. are not covered under the warranty. (4) Electrical Motor, Electrical Parts, Battery Etc. are not covered under the warranty.

Incidental / Consequential Loss: KisanKraft Limited or its manufacturers will not be liable for general damages, including bodily injuries, or for incidental or consequential damages including, but not limited to, loss of use, loss of profits, loss of production, expense of substitute equipment or other commercial loss or damage.

Limitation of Liability: This limited warranty is in lieu of all other express warranties, obligations, or liabilities. Any implied warranties, obligations, or liabilities, including, but not limited

to, any implied warranty of merchantability shall be limited in duration to the applicable warranty period. Any action for breach of any warranties hereunder, including, but not limited to, any implied warranty of merchantability must be brought within the applicable warranty period. **Modifications of Warranty:** No agent, representative, dealer, or employee of KisanKraft Limited or any of its manufacturers has the authority to increase or alter the obligations of this warranty.

Assignment / Transfer of warranty: The warranty cannot be assigned and shall not transfer if the product is resold by the first buyer. The above warranties are extended to the first end user (original purchaser), and no warranty is made, nor authorized to be made assignable on resale by the first end user.

What you must do to obtain limited warranty service: To obtain performance of any obligation under this warranty for failure during the applicable warranty period, you must deliver the defective product, to the nearest Authorized Dealer, along with proof-of-purchase (invoice/receipt). KisanKraft Limited, its manufacturers and its dealers reserve the right to inspect the claimed defective part(s) to determine if the malfunction is the result of a defect covered by this warranty. Please note that the decision of KisanKraft Limited with respect to any warranty claim is final.

After-sales Service (Including Warranty): KisanKraft Limited does not sell directly to consumers. All sales or supplies are made through Authorized Dealers. It is the responsibility of the Authorized Dealer to provide all after-sales service to consumers. Any warranty claim should be raised by dealer to KisanKraft Limited as per warranty policy.

Jurisdiction: All disputes are subject to Bangalore court's jurisdiction.

Notes:

- This purchase is not contingent upon a product demonstration. The purchaser shall satisfy himself with the product, including any product demonstration or verification of any function, before buying. KisanKraft Limited or its authorized dealers, including online sellers, shall not be liable to give any on-site demonstration after purchase of any of the product.
- Any product once used will not be taken back by KisanKraft Limited.
- Warranty and After Sale Services (including but not limited to installation, Demonstration, Repair, Routine Maintenance etc.), should be done through the Authorized Dealer selling this product.
- Dealers should have their own technician to provide After Sales Services to their Customers. KisanKraft Limited provides free training to Authorized Dealer's technicians at KisanKraft Limited's head office, on request from Authorized Dealer.

User Manual



KK-IC-210P

KisanKraft Limited

Warehouse: 818 3B1 to 818 3B18, Podalukur - Sangam Road, Prabagiripatnam, Podalukur, Nellore - 524345, Andhra Pradesh, INDIA

Head Office: Sri Huchhanna Tower, #4, 1st Main, 7-A Cross, Maruthi Layout, Dasarahalli, HAF Post, Hebbal, Bangalore 560024, Karnataka, INDIA

- ◆ Bangalore (HO) ◆ Ahmedabad ◆ Bhopal ◆ Bhubaneswar ◆ Coimbatore
- ◆ Guwahati ◆ Hubli ◆ Hyderabad ◆ Jaipur ◆ Karnal
- ◆ Kolkata ◆ Lucknow ◆ Nellore ◆ Pune ◆ Raipur



Scan the QR code to download
KisanKraft App

App is available on 



Scan the QR code for
KisanKraft Youtube Channel



CONTENTS

SAFETY LABELS	7
SAFETY INSTRUCTION	8
COMPONENTS	10
ASSEMBLY	12
CONTROLS	14
BEFORE OPERATION	16
OPERATION	16
SERVICING	22
STORAGE	28
TRANSPORTING	30
TECHNICAL SPECIFICATIONS	30
PART DIAGRAM	31
USER MANUAL	40
ENGINE PARTS DIAGRAM & LIST	49

Product	Agricultural Inter-Cultivator	KisanKraft Invoice Date	
Brand	KisanKraft	KisanKraft Invoice No.	
Model	☐ KK-IC-210P		
WARRANTY PERIOD	6 MONTHS	FOR THE SPECIFIED PERIOD FROM THE DATE OF SALE OR DELIVERY WHICHEVER IS EARLIER.	
Dealer's Invoice Date		Dealer's Invoice No.	
Buyer's Info (Name, Address, Phone, etc.):		Dealer's Stamp (Address, Phone, TIN, etc.):	
Buyer's Sign		Dealer's Sign	

Warranty Policy

What is covered: KisanKraft Limited and its manufacturers warrant this product to be free from defects in material or workmanship. All parts defective in material and workmanship are covered. This warranty will only cover defects arising under normal usage.

This warranty is limited to repair or replacement by KisanKraft Limited or its manufacturers of such parts as appear to KisanKraft or its manufacturers, upon inspection, to be defective in material and/or workmanship. KisanKraft or its manufacturers make no warranty with respect to items not manufactured or sold by them. No onsite warranty is provided by KisanKraft Limited or its manufacturers. Defective items must be brought/sent to our Authorized Dealer or KisanKraft Limited's office for service.

What is not covered: The *warranty shall become null and void* and neither KisanKraft Limited nor any of its manufacturers, nor its authorized dealers assume any responsibility, if the failure was caused by the following:

(1) Operation of product with incorrect fuel or lubricants, (2) Incorrect usage of machine or misuse, (3) Lack of maintenance, (4) Negligence, (5) Accident or physical damage, (6) Repairs made by unauthorized parties and/or with unauthorized parts, (7) Improper set up, adjustments, tampering or altered products (8) Any modification to the product what-so-ever.

Important: (1) Normal maintenance and adjustments to the product is the responsibility of the customer. (2) Normal wear and tear are not covered under warranty. (3) Rubber/plastic parts and consumables such as blades, clutch and clutch-bell, sparkplugs, nylon line, air-filters, fuel-filters, oil seals and gaskets etc. are not covered under the warranty. (4) Electrical Motor, Electrical Parts, Battery Etc. are not covered under the warranty.

Incidental / Consequential Loss: KisanKraft Limited or its manufacturers will not be liable for general damages, including bodily injuries, or for incidental or consequential damages including, but not limited to, loss of use, loss of profits, loss of production, expense of substitute equipment or other commercial loss or damage.

This warranty is null & void, if you fail to register the warranty with KisanKraft by sending the KisanKraft Copy with dealer's stamp. KisanKraft Limited

Limitation of Liability: This limited warranty is in lieu of all other express warranties, obligations, or liabilities. Any implied warranties, obligations, or liabilities, including, but not limited to, any implied warranty of merchantability shall be limited in duration to the applicable warranty period. Any action for breach of any warranties hereunder, including, but not limited to, any implied warranty of merchantability must be brought within the applicable warranty period.

Modifications of Warranty: No agent, representative, dealer, or employee of KisanKraft Limited or any of its manufacturers has the authority to increase or alter the obligations of this warranty.

Assignment / Transfer of warranty: The warranty cannot be assigned and shall not transfer if the product is resold by the first buyer. The above warranties are extended to the first end user (original purchaser), and no warranty is made, nor authorized to be made assignable on resale by the first end user.

What you must do to obtain limited warranty service: To obtain performance of any obligation under this warranty for failure during the applicable warranty period, you must deliver the defective product, to the nearest Authorized Dealer, along with proof-of-purchase (invoice/receipt). KisanKraft Limited, its manufacturers and its dealers reserve the right to inspect the claimed defective part(s) to determine if the malfunction is the result of a defect covered by this warranty. Please note that the decision of KisanKraft Limited with respect to any warranty claim is final.

After-sales Service (Including Warranty): KisanKraft Limited does not sell directly to consumers. All sales or supplies are made through Authorized Dealers. It is the responsibility of the Authorized Dealer to provide all after-sales service to consumers. Any warranty claim should be raised by dealer to KisanKraft Limited as per warranty policy.

Jurisdiction: All disputes are subject to Bangalore court's jurisdiction.

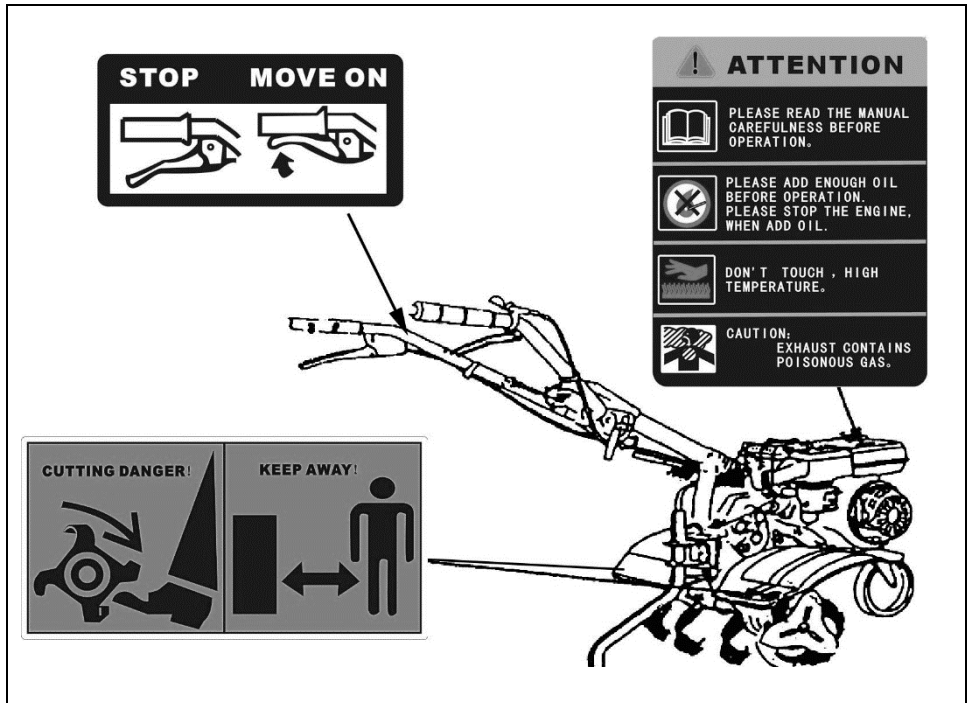
Notes:

- This purchase is not contingent upon a product demonstration. The purchaser shall satisfy himself with the product, including any product demonstration or verification of any function, before buying. KisanKraft Limited or its authorized dealers, including online sellers, shall not be liable to give any on-site demonstration after purchase of any of the product.
- Any product once used will not be taken back by KisanKraft Limited.
- Warranty and After Sale Services (including but not limited to installation, Demonstration, Repair, Routine Maintenance etc.), should be done through the Authorized Dealer selling this product.
- Dealers should have their own technician to provide After Sales Services to their Customers. KisanKraft Limited provides free training to Authorized Dealer's technicians at KisanKraft Limited's head office, on request from Authorized Deal

This warranty is null & void, if you fail to register the warranty with KisanKraft by sending the KisanKraft Copy with dealer's stamp. KisanKraft Limited

SAFETY LABELS

The following safety labels appear on the machine. They are there to remind you of the care and attention required in use. This is what the symbols mean:



This warranty is null & void, if you fail to register the warranty with KisanKraft by sending the KisanKraft Copy with dealer's stamp. KisanKraft Limited

SAFETY INSTRUCTION

1) Training

- a. Read the instructions carefully. Be familiar with the controls and the proper use of the equipment.
- b. Never allow children or people unfamiliar with these instructions to use the machine. Local regulations can restrict the age of the operator.
- c. Never work while people, especially children, or pets are nearby.
- d. Keep in mind that the operator or user is responsible for accidents or hazards occurring to other people or their property.

2) Preparation

- a. While working, always wear substantial footwear and long trousers. Do not operate the equipment when barefoot or wearing open sandals.
- b. Thoroughly inspect the area where the equipment is to be used and remove all objects which can be thrown up by the machine.
- c. **WARNING** – Petrol is highly flammable:
 - Store fuel in container specifically designed for this purpose.
 - Refuel outdoors only and do not smoke while refueling.
 - Add fuel before starting the engine. Never remove the cap of the fuel tank or add petrol while the engine is running or when the engine is hot.
 - if petrol is spilled, do not attempt to start the engine but move the machine away from the area of spillage and avoid creating any source of ignition until petrol vapors have dissipated.
 - replace all fuel tank and container caps securely.
- d. Replace faulty silencers.
- e. Before using, always visually inspect to see that the tools are not worn or damaged. Replace worn or damaged elements and bolts in sets to preserve balance.

3) Operation

- a. Do not operate the engine in a confined space where dangerous carbon monoxide fumes can collect.
- b. Work only in daylight or in good artificial light.
- c. Always be sure of your footing on slopes.

This warranty is null & void, if you fail to register the warranty with KisanKraft by sending the KisanKraft Copy with dealer's stamp. KisanKraft Limited

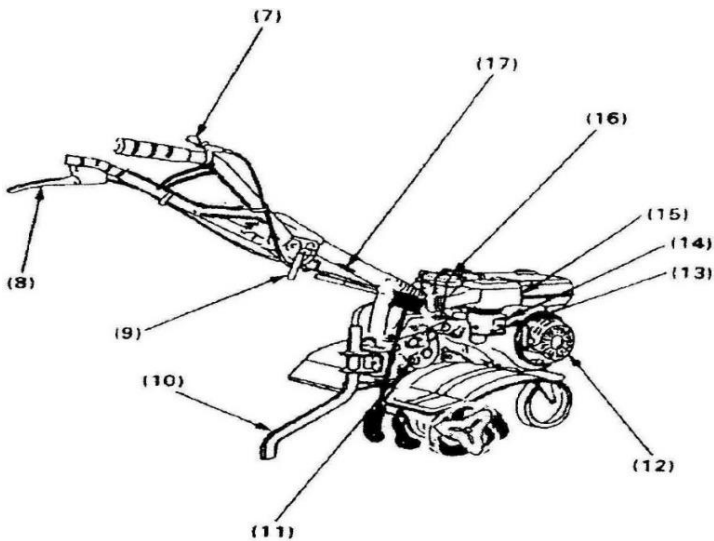
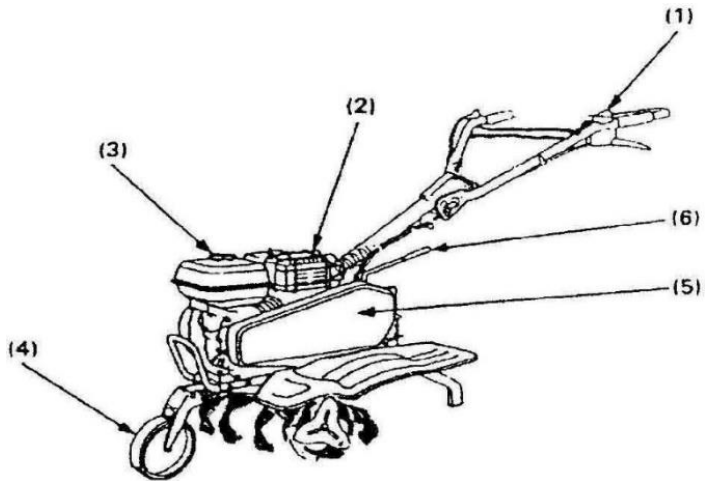
- d. Walk, never run with the machine.
- e. Exercise extreme caution when changing direction on slopes.
- f. Do not work on excessively steep slopes.
- g. Use extreme caution when reversing or pulling the machine towards you.
- h. Do not change the engine governor settings or over speed the engine.
- i. start the engine carefully according to manufacturer instructions and with feet well away from the tool(s).
- j. Do not put hands or feet near or under rotating parts.
- k. Never pick up or carry a machine while the engine is running.
- l. Stop the engine:
 - i. Whenever you leave the machine.
 - ii. Before refueling.
- m. Reduce the throttle setting during engine shut down and, if the engine is provided with a shut-off valve, turn the fuel off at the conclusion of working.

4) Maintenance and storage

- a. Keep all nuts, bolts, and screws tight to ensure the equipment is in safe working condition.
- b. Never store the equipment with petrol in the tank inside a building where fumes can reach an open flame or spark.
- c. Allow the engine to cool before storing in any enclosure.
- d. To reduce the fire hazard, keep the engine, silencer, and petrol storage area free of vegetative material and excessive grease.
- e. Replace worn or damaged parts for safety.
- f. If the fuel tank must be drained, this shall be done outdoors

This warranty is null & void, if you fail to register the warranty with KisanKraft by sending the KisanKraft Copy with dealer's stamp. KisanKraft Limited

COMPONENTS



This warranty is null & void, if you fail to register the warranty with KisanKraft by sending the KisanKraft Copy with dealer's stamp. KisanKraft Limited

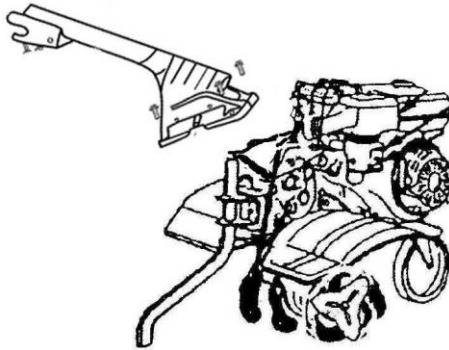
Sl. No.	Item	Sl. No.	. Item
1	Switch	8	Clutch handle
2	Muffler	9	Handrail height adjustor
3	Fuel tank cover	10	Depth regulator
4.	Front wheel	11	Dipstick
5	Belt cover	12	Starter
6	Shift handle	13	Fuel valve
7	Throttle lever	14	Choke
15	Air cleaner	16	Muffler
17	Nameplate		

This warranty is null & void, if you fail to register the warranty with KisanKraft by sending the KisanKraft Copy with dealer's stamp. KisanKraft Limited

ASSEMBLY

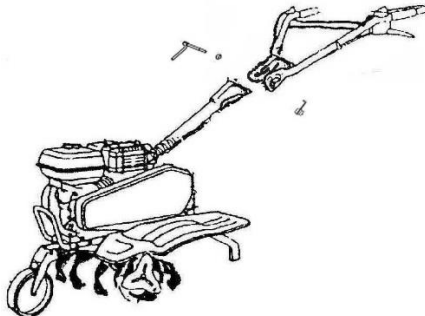
UNPACKING

1. Remove all loose items from the carton.
2. Remove the plastic bag and it's ready for assembly.
3. Assemble the connection tube with gear box by four M8×16 bolts.



HANDRAIL

1. Assemble the handrail with connection tube.
2. Tighten them by handle adjuster.

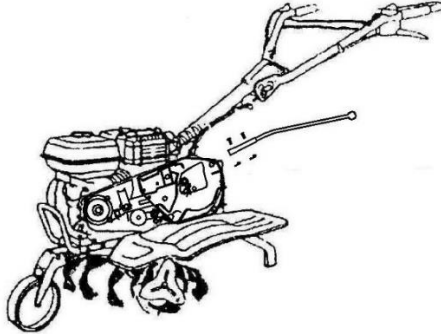


SHIFT LEVER

1. Remove belt box cover.

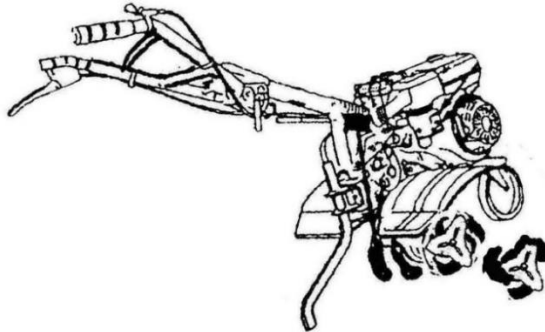
This warranty is null & void, if you fail to register the warranty with KisanKraft by sending the KisanKraft Copy with dealer's stamp. KisanKraft Limited

2. Remove passive belt wheel.
3. Assemble shift lever with pin.
4. Assemble the passive belt wheel and belt box cover.



BLADE

1. Lean the machine left side.
2. Fix the outboard blade at right side by pin.
3. Assemble left side blade as above

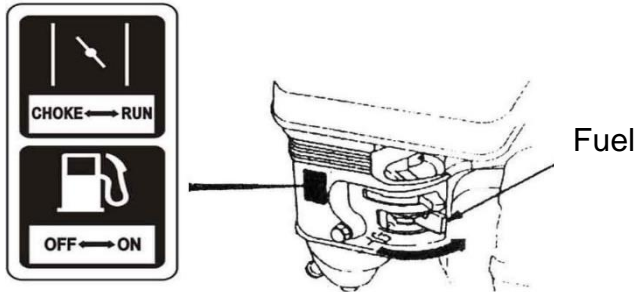


This warranty is null & void, if you fail to register the warranty with KisanKraft by sending the KisanKraft Copy with dealer's stamp. KisanKraft Limited

CONTROLS

FUEL VALVE LEVER

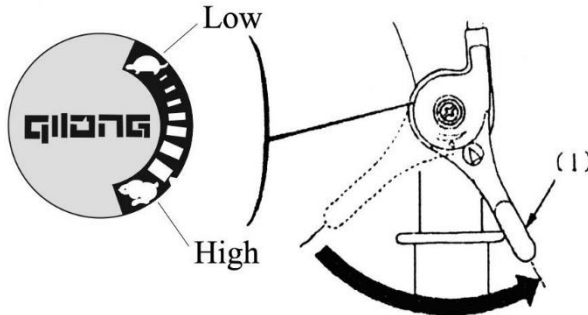
The fuel valve opens and closes the passage between the fuel tank and the carburetor. The fuel valve lever must be in the “ON” position for the engine to run.



When the engine is not in use, leave the fuel valve lever in the “OFF” position to prevent carburetor flooding and to reduce the possibility of fuel leakage.

THROTTLE LEVER

The throttle lever controls engine speed.



Put the throttle lever on position “H” can make the engine run faster and position “L” can make the engine run slower.

This warranty is null & void, if you fail to register the warranty with KisanKraft by sending the KisanKraft Copy with dealer’s stamp. KisanKraft Limited

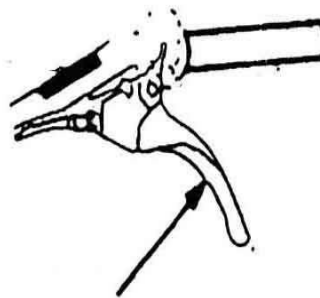
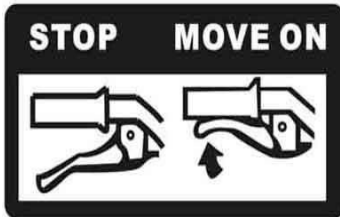
RECOIL STARTER GRIP

Pulling the starter handle operates the recoil starter to crank the engine



CLUTCH LEVER

It situated on the left handrail. Connect the worm bar and engine output shaft to drive the hoe blade when the lever is squeezed.



clutch handle

SHIFT HANDLE

This warranty is null & void, if you fail to register the warranty with KisanKraft by sending the KisanKraft Copy with dealer's stamp. KisanKraft Limited

The machine has two shifts. The shift handle should be operated to the suitable position to let the machine go forward or go backward. (See 7.2.2)

BEFORE OPERATION

CHECK THE GENERAL CONDITION

- Look around and underneath the engine for signs of oil or gasoline leaks.
- Remove any excessive dirt or debris, especially around the muffler and recoil starter.
- Look for signs of damage.
- Check that all shields and covers are in place, and all nuts, bolts, and screws are tightened.

CHECK THE ENGINE

- Check the oil level. (See 8.5) For convenience to transporting, there is no fuel and oil in the engine, Fill the engine with oil before using.
- Check the air filter. (See 8.9)
- Check the fuel level. (See 8.4)

NOTICE:

The engine can be seriously damaged without oil. Always check the oil level before using. The machine must stand on level ground when checking.

OPERATION



The Motor is equipped with fenders. The motor may never be started without it or with a defect fender.

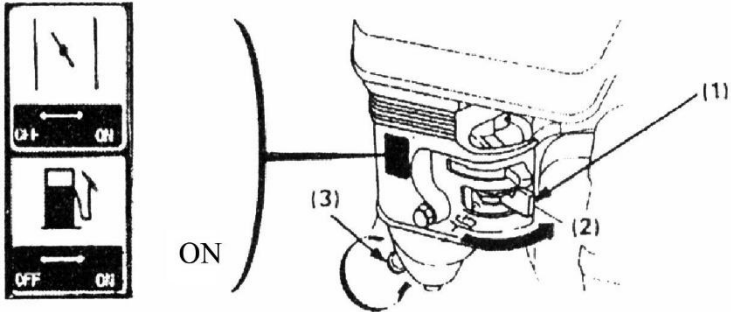


Before starting the engine, be sure the clutch is disengaged, and the shift lever is in the neutral position to prevent sudden uncontrolled movement when the engine starts. (See 7.2)

This warranty is null & void, if you fail to register the warranty with KisanKraft by sending the KisanKraft Copy with dealer's stamp. KisanKraft Limited

STARTING THE ENGINE

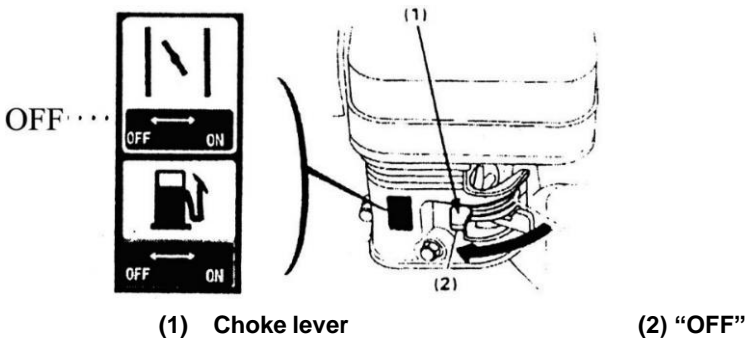
1. Move the fuel valve lever to the **ON** position.



- (1) Fuel valve (2) "ON" (3) Drain bolt

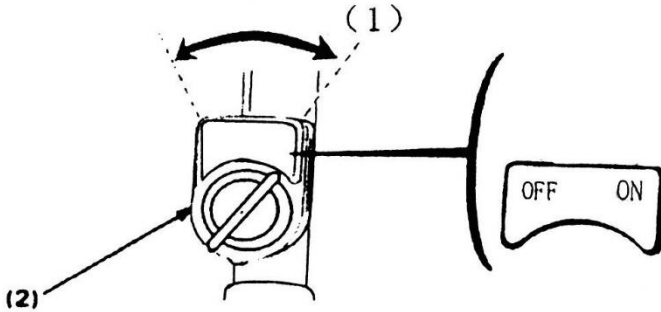
2. Put the choke lever to a suitable position

Note: Do not use choke if the engine is warm or the temperature is high



3. Move the engine switch to the **ON** position

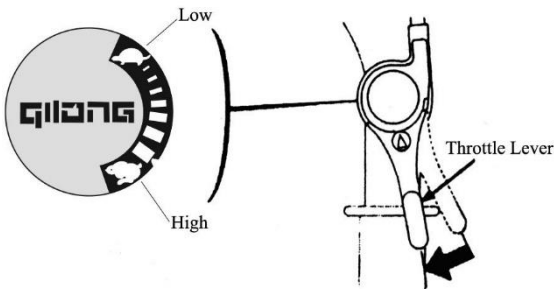
This warranty is null & void, if you fail to register the warranty with KisanKraft by sending the KisanKraft Copy with dealer's stamp. KisanKraft Limited



(1) ON"

(2) Engine switch

4. Move the throttle lever to the left



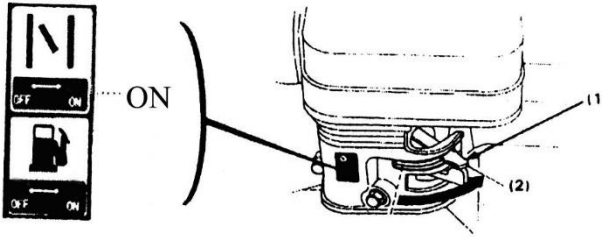
5. Make sure the shift handle is in the natural position (see 7.2.2)
6. Your left hand grips the handle tightly to make sure the machine is in stability. Your right hand pulls the starter grip lightly until you feel resistance, then pull briskly. Next return the starter grip gently.



Do not allow the starter grip to snap back against the engine. Return it gently to prevent damage to the starter

- 1) As the engine warm up, open the choke gradually.

This warranty is null & void, if you fail to register the warranty with KisanKraft by sending the KisanKraft Copy with dealer's stamp. KisanKraft Limited



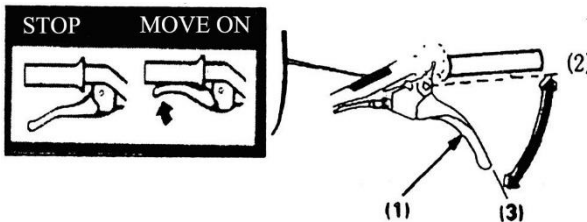
(1) Choke lever (2) "ON"

OPERATE THE MACHINE

1. Start the engine as above. Let the engine run a few minutes to warm before use.
2. Move the shift handle to the desired position (forward/backward).

Engine	Model	Shift Gear
168FB	KB500-1	2 forward positions, 1 neutral position
	KB500-2	1 forward position, 1 neutral position, 1 backward position
	KB500-3	2 forward positions, 1 neutral position, 1 backward position

3. Squeeze the clutch lever on "MOVE ON" position and the machine now move forward/backward.
4. Release the clutch lever on "STOP" position to stop the machine to move on.



(1) Clutch lever (2) "engaged": move on (3) "disengaged": stop

Note: If the shift lever will not engage the desired gear, stop the engine, then squeeze

This warranty is null & void, if you fail to register the warranty with KisanKraft by sending the KisanKraft Copy with dealer's stamp. KisanKraft Limited

the clutch lever and move the Inter-cultivator slightly to reposition the gears.



Reduce engine speed (move the throttle lever to the low position) before operating the clutch.



Always release the clutch lever on the "STOP" position before operating with the shift handle.



If the soil fastened on the hoe blade, do not try to remove it before

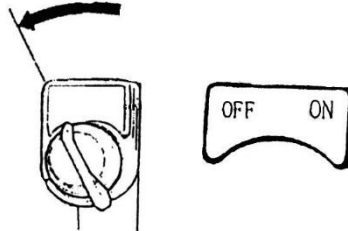
- Releasing the clutch lever.
- Stopping the engine.
- Disconnecting the spark plug cable.
- Waiting up to 30 minutes after use to allow the engine to cool.
- Do not put your hand inside the hoe blade.

STOP THE ENGINE/AFTER USE

IN AN EMERGENCY

Turn the engine switch to "OFF" immediately.

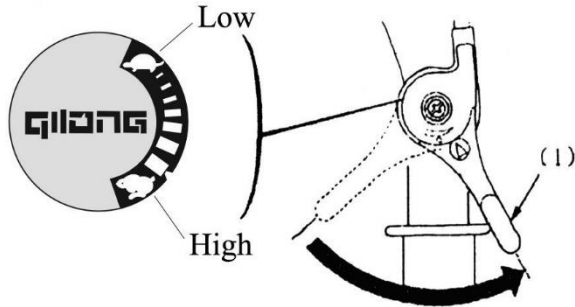
OFF



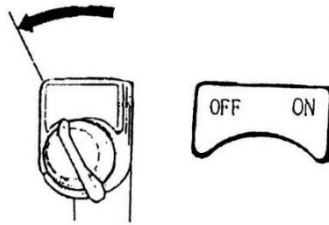
Normally, you should stop the engine as followed steps after use.

1. Move the throttle lever fully to the right.

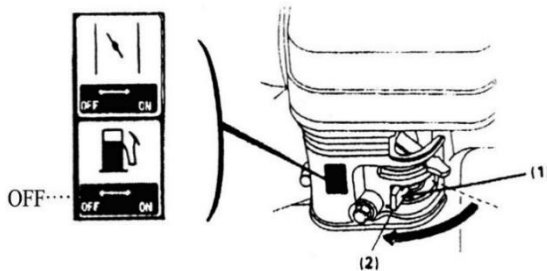
This warranty is null & void, if you fail to register the warranty with KisanKraft by sending the KisanKraft Copy with dealer's stamp. KisanKraft Limited



2. Move the engine switch to the "OFF" position.
OFF



3. Move the fuel valve lever to the "OFF" position.



4. Clean both hoe blades.

Note: Waiting up to 30 minutes after use to allow the engine to cool

5. Tighten loose screws and nuts.
6. Check for loose or damaged parts. If required, change damaged parts.

This warranty is null & void, if you fail to register the warranty with KisanKraft by sending the KisanKraft Copy with dealer's stamp. KisanKraft Limited

7. Disconnecting the spark plug cable. (See 8.10)

SERVICING

SAFETY PRECAUTIONS

Make sure the engine is off before you begin any maintenance or repair. This will eliminate several potential hazards:

- **Carbon monoxide poisoning from engine exhaust.**

Never run the machine indoors. The exhaust fumes contain carbon monoxide, a very toxic gas.

- **Burns from hot parts.**

Let the engine cool and up to 30 minutes after use before touching.

- **Injury from moving parts.**

Read the instructions before you begin, and make sure you have the tools and skills required.

To reduce the possibility of fire or explosion, be careful when working around gasoline. Use only a nonflammable solvent, not gasoline, to clean parts. Keep cigarettes, sparks, and flames away from all fuel related parts.

MAINTENANCE SCHEDULE

REGULAR SERVICE PERIOD (4)	Before each use	5Hrs. or First month	25Hrs. or Every 3 months	50Hrs. or Every 6 months	100Hrs or Every 6 months	250Hrs. or Every 2 year
Engine oil	Check	Change (2)		Change (2)		
Air filter	Check		Clean (1)	Clean (1)		Change
Linkages, lubricate	After every 10 Hrs. (3)					
Gear Oil	40 hours for the first time, 80 hours after then.					
Sediment cup				Clean		

This warranty is null & void, if you fail to register the warranty with KisanKraft by sending the KisanKraft Copy with dealer's stamp. KisanKraft Limited

Spark plug					Check Adjust	Change
Idle speed					Check Adjust (3)	
Valve clearance					Check Adjust (3)	
Combustion Chamber	After every 300 Hrs. (3)					
Fuel tank				Clean (3)		
Fuel filter				Clean (3)		
Fuel tube	Every 2 years (Replace if necessary) (3)					

- (1) Service more frequently when used in dusty areas.
- (2) Change oil every 25 hours when used in heavy load or in high ambient temperatures.
- (3) These items should be serviced by a technician.

REFUELING

Use unleaded gasoline to produces fewer engine and spark plug deposits and extends exhaust system life.



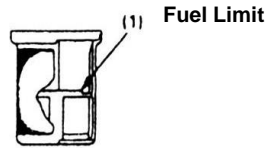
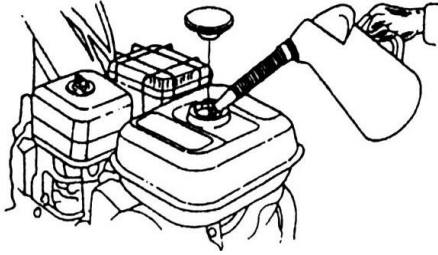
Gasoline is highly flammable and explosive, and you can be burned or seriously injured when refueling.

- Stop engine and keep heat, sparks, and flame away.
- Refuel only outdoors.
- Gasoline is poisonous, be careful not to touch or inbreathe the vapor.

ADDING FUEL

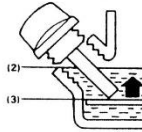
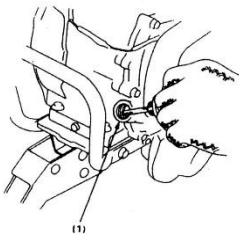
1. Remove the fuel tank cap.
2. Add fuel to the bottom of the fuel level limit in the neck of the fuel tank. Do not overfill. Wipe up spilled fuel before starting the engine.

This warranty is null & void, if you fail to register the warranty with KisanKraft by sending the KisanKraft Copy with dealer's stamp. KisanKraft Limited



ENGINE OIL LEVEL CHECK

1. Check the oil level when engine is stopped.
2. Remove the oil filler cap/dipstick and wipe it clean.
3. Insert the oil filler cap/dipstick into the oil filler neck as shown, but do not screw it in, then remove it to check the oil level.
4. If the oil level is near or below the lower limit mark on the dipstick, remove the oil filler cap/dipstick, and fill with the recommended oil to the upper limit mark (bottom edge of the oil fill hole). Do not overfill.
5. Reinstall the oil filler cap/dipstick

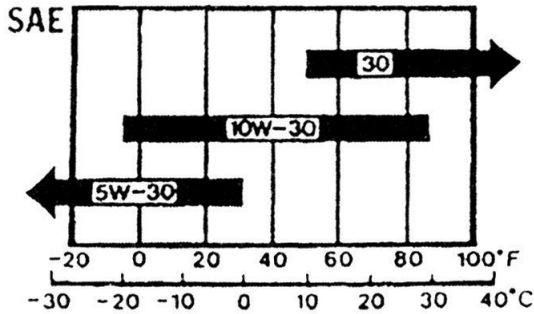


- (2) Oil filter –cap/ dipstick
- (3) Upper Limit
- (4) Lower limit

ENGINE OIL RECOMMENDATIONS

Oil is a major factor affecting performance and service life. Use 4-stroke automotive detergent oil SAE 10W-30 is recommended for general use

This warranty is null & void, if you fail to register the warranty with KisanKraft by sending the KisanKraft Copy with dealer's stamp. KisanKraft Limited



OIL CHANGE

Drain the engine oil when the engine is warm. Warm oil drains quickly and completely.

1. Turn the fuel valve to **off** position to reduce the possibility of fuel.
2. Place a suitable container next to the engine to catch the used oil.
3. Remove the drain bolt and drain the oil into the container by slightly tipping the engine toward the oil filler cap/dipstick.
4. With the engine in a level position, fill to the upper limit mark on the dipstick with the recommended oil.

Engine oil capacity: 0.6L



- Running the engine with a low oil level can cause engine damage.
- *Engine oil is poisonous, be careful not to touch it.*
- 5. Reinstall the oil filler cap/dipstick securely we suggest you take used oil in a sealed container to your local recycling center or service station for reclamation. Do not throw it in the trash, pour it on the ground, or down a drain.

LUBRICATION



No service must be carried out before:

The engine has stopped.

The cable has been disconnected from the spark plug.

This warranty is null & void, if you fail to register the warranty with KisanKraft by sending the KisanKraft Copy with dealer's stamp. KisanKraft Limited

Lubricate the linkage every 10 hours of use and before long-time storage. Use 10W oil. No parts inside the gearbox are to be lubricated. All bearings and bushings are permanently lubricated and require no maintenance.

Lubricating these parts will only result in the grease getting on to the friction wheel and disc drive plate, which could damage the rubber clad friction wheel.

For long time storage the above-mentioned parts should be lightly wiped with an oily rag to prevent rust.

AIR CLEANER SERVICE

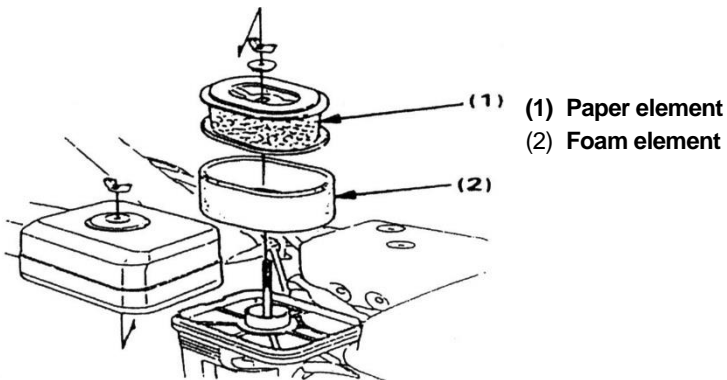
A dirty air filter will restrict air flow to the carburetor, reducing engine performance. If you operate the engine in very dusty areas, clean the air filter more often than specified in the **MAINTENANCE SCHEDULE**.

NOTICE

Operating the engine without an air filter, or with a damaged air filter, will allow dirt to enter the engine, causing rapid engine wear.

INSPECTION

1. Remove the air cleaner cover. Be careful to prevent dirt and debris from falling into the air cleaner base.
2. Remove the air cleaner from the air cleaner base.
3. Inspect the air cleaner elements. Replace any damaged elements.
Clean or replace dirty elements



This warranty is null & void, if you fail to register the warranty with KisanKraft by sending the KisanKraft Copy with dealer's stamp. KisanKraft Limited

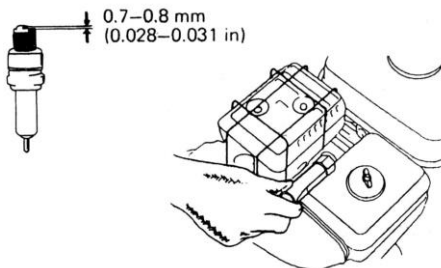
CLEANING

1. Remove the air cleaner cover and foam element, as described in the **INSPECTION** procedure.
2. Remove the paper element from the air cleaner base.
3. Paper air filter element: Tap the filter element several times on a hard surface to remove dirt.
4. Foam air filter element: Clean in warm soapy water, rinse, and dry thoroughly. Dip the filter element in clean engine oil, then squeeze out all excess oil.
5. Excess oil will restrict air flow through the foam element and may transfer to the
6. Wipe dirt from the inside of the air cleaner base and cover, using a moist rag. Be careful to prevent dirt from entering the air duct that leads to the carburetor.
7. Reinstall the air cleaner elements, and make sure both elements are properly positioned. Install the air cleaner cover and tighten the wing bolts securely.

SPARK PLUG SERVICE

Recommended spark plug: F6RTC

1. Disconnect the spark plug cap and remove any dirt from around the spark plug area.
2. Remove the spark plug with a spark plug wrench.
3. Inspect the spark plug. Replace it if the electrodes are worn, or if the insulator is cracked or chipped.
4. Measure the spark plug electrode gap with a suitable gauge. The gap should be 0.028–0.031 in (0.70–0.80mm). Correct the gap, if necessary, by carefully



bending the side electrode

5. Install the spark plug carefully, by hand, to avoid cross-threading.

This warranty is null & void, if you fail to register the warranty with KisanKraft by sending the KisanKraft Copy with dealer's stamp. KisanKraft Limited

6. After the spark plug seats, tighten with a spark plug wrench to compress the sealing washer. If reinstalling the used spark plug, tighten 1/8-1/4 turn after the spark plug seats.

If installing a new spark plug, tighten 1 / 2 turn after the spark plug seats.

NOTICE

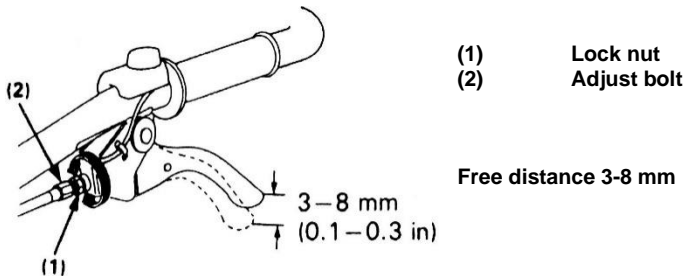
A loose spark plug can overhand and damage the engine.

Overtightening the spark plug can damage the threads in the cylinder head.

7. Attach the spark plug cap.

Clutch cable

Check the free distance as follow. If the distance is not correct, loose the lock nut and adjust the bolt. Next tighten the lock nut and check for a proper clutch lever operation



STORAGE

Never store the machine with petrol in the fuel tank in a confined area with bad ventilation. Petrol fumes could reach open flames, sparks, and cigarettes etc.

If the machine is to be stored for a longer period than 30 days, the following methods are recommended.

1. Empty the fuel tank.
2. Start the engine and let it run until it stops due to lack of fuel.
3. Change the engine oil if it has not been done for 3 months.
4. Remove the spark plug and empty a little engine oil (about 30 ml) in the hole. Crank the engine a couple of times. Screw back the spark plug.
5. Clean the whole machine thoroughly.

This warranty is null & void, if you fail to register the warranty with KisanKraft by sending the KisanKraft Copy with dealer's stamp. KisanKraft Limited

6. Lubricate all the parts as shown in LUBRICATING above.
7. Inspect the machine for damage, repair if necessary.
8. Touch up any paint damage.
9. Rust protection to the metal surfaces.
10. Store the machine indoors if possible

This warranty is null & void, if you fail to register the warranty with KisanKraft by sending the KisanKraft Copy with dealer's stamp. KisanKraft Limited

TRANSPORTING

If the engine has been running, allow it to cool for at least 15 minutes before loading the machine on the transport vehicle. A hot engine and exhaust system can burn you and can ignite some materials.

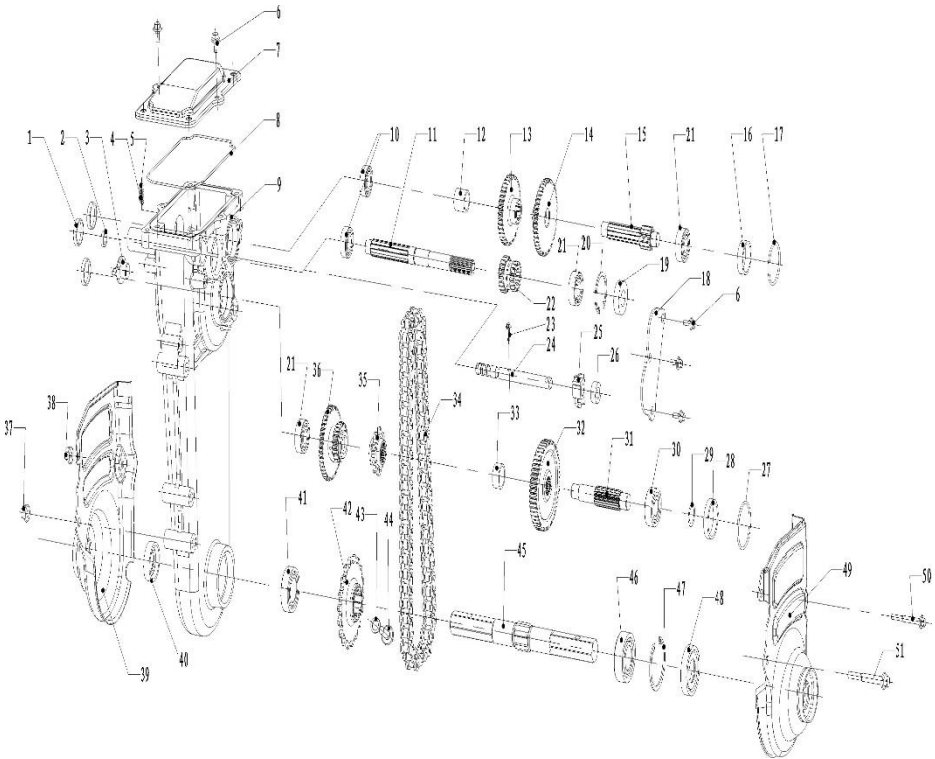
Keep the engine machine when transporting to reduce the possibility of fuel leakage. Move the fuel valve lever to the OFF position

TECHNICAL SPECIFICATIONS

Model	KK-IC-210P
Engine type	4-Stroke, Petrol Engine OHV, horizontal single cylinder
Rated Power	4.2 kW (5.63 hp)
Engine Speed	3600 RPM
Displacement	208 cc
Cooling System	Force air-cooled
Ignition system	Non-contact Transistor ignition
Power output mode	Horizontal power shaft
Engine oil Grade	15W-40
Fuel consumption (g/kW/h)	395
Fuel Grade	Unleaded gasoline 93#
Start Mode	Manual Start
Driving Mode	Belt + Chain
Gear Shifting	1,0,2, -1
Fuel Tank	3.6 L
Bore*Stroke	70*54 mm
Max Torque	11.7 Nm. /2500 RPM
Net Weight	72 Kgs
Gross Weight	92 Kgs
Weeding Width	750 mm
Weeding Depth	≥100 mm
Blade Type	4-3 (24 pcs)
Tire Type	3.5-6
Box Dimension	900*450*660
Packing	1 Unit in 1 Box

This warranty is null & void, if you fail to register the warranty with KisanKraft by sending the KisanKraft Copy with dealer's stamp. KisanKraft Limited

PART DIAGRAM Gearbox Assy



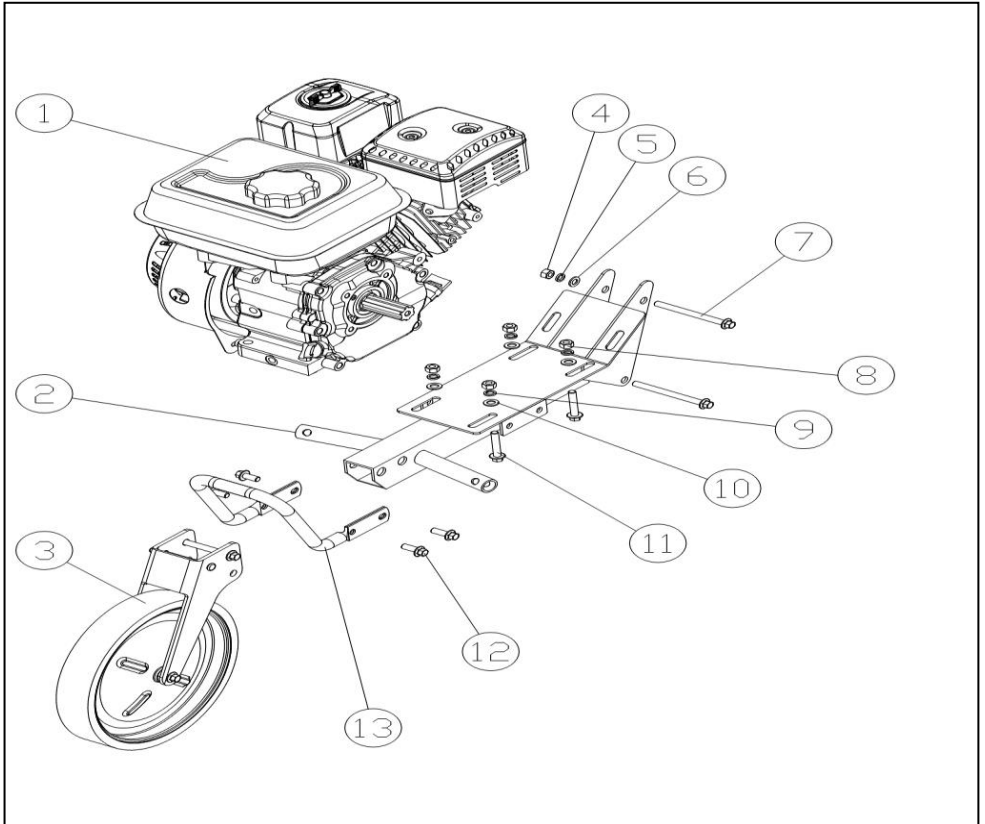
Series No.	Part Code	English Name	Unit	Quantity for One Unit
1	71117-T80A-1000	OIL PLUG (BIG)	pcs	3
2	71117-T80A-2000	OIL PLUG (SMALL)	pcs	1
3	00001-W007-0405	OIL PLUG	pcs	1
4	71115-T80A-000B	SHIFTING SPRING	pcs	1
5	B308-0600-0000	STEEL BALL $\Phi 6$	pcs	1
6	B5789-06KG-020C	HEXAGON FLANGE BOLT M6 \times 12	pcs	5
7	7110E-T75A-000H	GEAR BOX COVER	pcs	1
8	71015-T75A-0000	SEALING RING	pcs	1
9	71101-T75A-0000	GEAR BOX	pcs	1
10	B276-6202-00	Bearing 6202	pcs	1
11	71111-T75A-0000	MAIN SHAFT	pcs	1

This warranty is null & void, if you fail to register the warranty with KisanKraft by sending the KisanKraft Copy with dealer's stamp. KisanKraft Limited

12	71124-T80A-200B	SHAFT HOUSING	pcs	1
13	71126-T80A-1000	COUNTER SHAFT GEAR ONE	pcs	1
14	71126-T80A-4000	COUNTER SHAFT GEAR TWO	pcs	1
15	71121-T80A-0000	COUNTER SHAFT	pcs	1
16	71124-T80A-100B	STOP RING I	pcs	1
17	B3452-1-265C-0400	O-RING 40x2.65	pcs	1
18	7110A-T80A-000C	OIL STOPPER	pcs	1
19	B9877-1-015C-3500	OIL SEAL $\phi 15 \times \phi 35 \times 7$	pcs	1
20	B893-1-0035-000B	CHECK RING 35	pcs	1
21	B276-6202-00	Bearing 6202	pcs	3
22	71112-T80A-0000	TWO-THROW GEAR	pcs	1
23	B5789-06KG-016C	HEXAGON FLANGE BOLT M6x16	pcs	1
24	71141-T75A-200C	SHIFT FORK SHAFT	pcs	1
25	71142-T80A-0000	SHIFT FORK	pcs	1
26	B9877-1-012C-2200	OIL SEAL 12x22x5	pcs	1
27	B3452-1-265C-0450	O-RING 45x2.65	pcs	1
28	71124-T80A-400B	STOP Ring	pcs	1
29	71109-175H-0000	WASHER $\phi 17.5 \times \phi 26 \times 1.0$	pcs	1
30	B276-6203-00	Bearing 6203	pcs	1
31	71171-T80A-0000	DRIVING SHAFT	pcs	1
32	71126-T80A-3000	DRIVING GEAR	pcs	1
33	71124-T80A-300B	SHAFT Housing	pcs	1
34	71183-T75A-0000	CHAIN	pcs	1
35	71172-T80A-0000	DRIVING SPROCKET	pcs	1
36	71132-T80A-0000	REVERSE TWO-THROW GEAR	pcs	1
37	B6187-3-08LG-000C	HEXAGON FLANGE NUTS M8	pcs	1
38	B6187-3-06KG-000C	HEXAGON FLANGE NUTS M6	pcs	1
39	7110B-T75A-200H	RIGHT SHIELD	pcs	1
40	71184-T80A-1000	OIL SEAL 25x41x9	pcs	1
41	B276-6005-00	Bearing 6005	pcs	1
42	71182-T80A-0000	DRIVEN SPROCKET	pcs	1
43	71109-105H-0000	WASHER $\phi 10$	pcs	1
44	71204-T80A-0000	HEXAGON FLANGE BOLT M10x1.25x12	pcs	1
45	71181-T80A-0000	HEXAGON OUTPUT SHAFT	pcs	1
46	B276-6205-00	Bearing 6205	pcs	1
47	B893-1-0052-000B	CHECK RING 52	pcs	1
48	71184-T80A-0000	OIL SEAL 25x52x9	pcs	1
49	7110B-T75A-100H	LEFT SHIELD	pcs	1
50	B5789-06KG-050C	HEXAGON FLANGE BOLT M6x50	pcs	1
51	B16674-1-08LG-065C	HEXAGON FLANGE BOLT M8x65	pcs	1

This warranty is null & void, if you fail to register the warranty with KisanKraft by sending the KisanKraft Copy with dealer's stamp. KisanKraft Limited

ENGINE & ENGINE SUPPORT FRAME

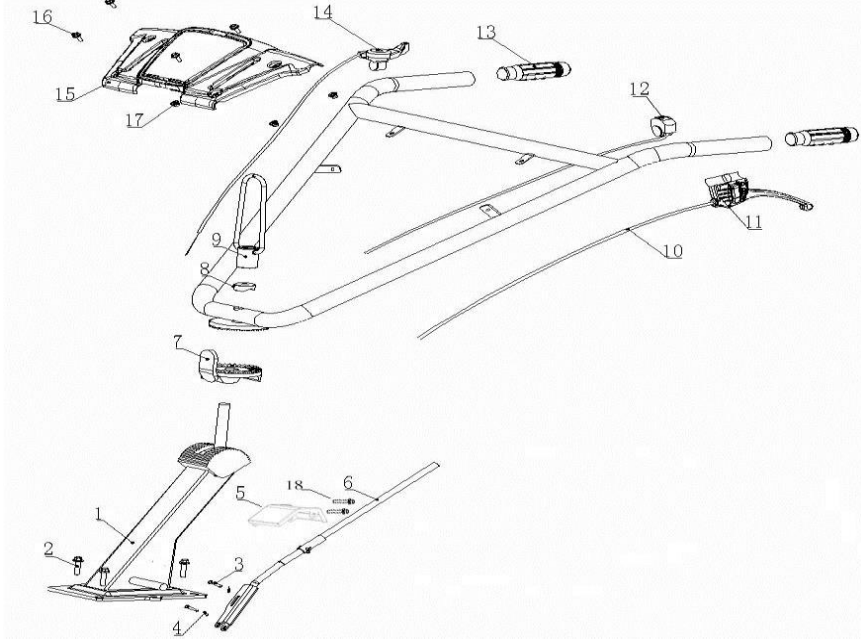


This warranty is null & void, if you fail to register the warranty with KisanKraft by sending the KisanKraft Copy with dealer's stamp. KisanKraft Limited

Series No.	Part Code	English Name	Unit	Quantity for One Unit
1	10000-E70F-D243	GASOLINE ENGINE	pcs	1
2	72101-T75A-20B5	engine support	pcs	1
3	72310-T75A-40W2	front wheel Assy	pcs	1
4	B6170-08LG-000C	Hex nut M8	pcs	2
5	B93-080G-000C	spring washer 8	pcs	2
6	B95-080G-000C	flat washer 8	pcs	2
7	B16674-1-08LG-065C	Hex bolt M8*P1.25*60	pcs	2
8	B6170-08LG-000C	Hex nut M8	pcs	4
9	B93-080G-000C	spring washer 8	pcs	4
10	B95-080G-000C	flat washer 8	pcs	4
11	B16674-1-08LG-040C	Hex bolt M8*P1.25*40	pcs	4
12	B16674-1-08LG-025C	Hex bolt M8*P1.25*49	pcs	4
13	72111-T75A-10B5	Bumper ASSY	pcs	1

This warranty is null & void, if you fail to register the warranty with KisanKraft by sending the KisanKraft Copy with dealer's stamp. KisanKraft Limited

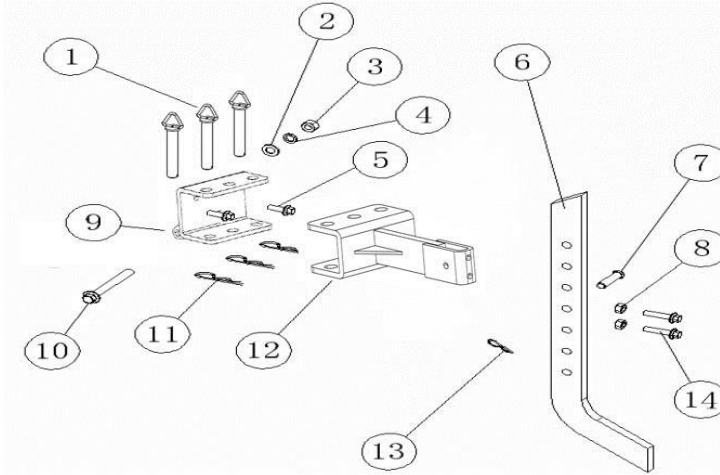
HANDLE COSRP ASSY



Series No.	Part Code	English Name	Unit	Quantity for One Unit
1	73201-T75A-31RQ	Handle Seat	pcs	1
2	B16674-1-08LG-020C	HEX FRANGE Bolt M8*P1.25*20	pcs	4
3	B882-0050-024C	B PIN $\phi 5 \times 24$	pcs	2
4	72205-T80A-000C	R Pin	pcs	2
5	73004-T80A-100C	Gearshift Cover	pcs	1
6	73001-T80A-000C	Shift Lever	pcs	1
7	73202-T75B-000C	Pressing Plate (Up)	pcs	1
8	73003-T75B-100C	LOCKING BLOCK	pcs	1
9	73003-T75B-000C	Adjustment Locking Part (Up &Down)	pcs	1
10	73112-T75A-920C	CLUTCH CABLE	pcs	1
11	73111-T75A-2000	Clutch HANDLE	pcs	1
12	73105-T80A-1000	SHUT DOWN ASSY	pcs	1
13	73002-TA5A-1000	GRIP	pcs	2
14	73104-T75B-7000	Governor switch Assy	pcs	1
15	73115-TA5A-11RW	TOOLBOX	pcs	1
16	B5789-06KG-016C	HEX FRANGE Bolt M6*P1.0*16	pcs	4

This warranty is null & void, if you fail to register the warranty with KisanKraft by sending the KisanKraft Copy with dealer's stamp. KisanKraft Limited

PULLEY COSRP ASSY



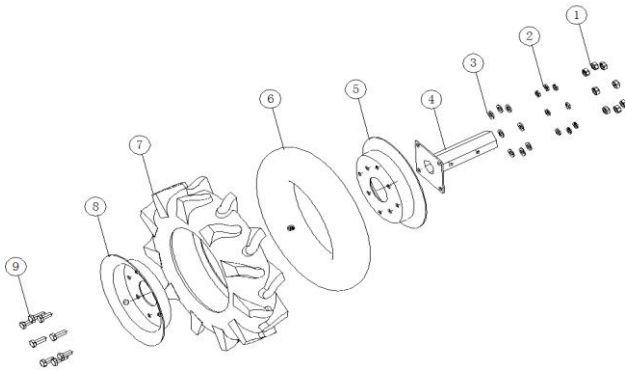
Series No.	Part Code	English Name	Unit	Quantity for One Unit
1	72203-T80A-000C	PIN OF TOWED BODY	pcs	3
2	B95-100G-000C	FLAT WASHER 10	pcs	1
3	B6170-10MG-000C	HEXAGON FLANGE NUTS M10	pcs	1
4	B93-100G-000C	Spring Washer	pcs	1
5	B5789-08LG-025C	HEXAGON FLANGE BOLT M8x25	pcs	2
6	72204-TA5A-00B5	DEEP FURROWING RESISTANCE PART (TYPE-L)	pcs	1
7	B882-0080-040C	PIN8x40	pcs	1
8	B6170-08LG-000C	Hex nut M6	pcs	2
9	72201-T75B-00B5	ENHANCED PULLEY COSRP	pcs	1
10	B5782-10MG-090C	HEXAGON FLANGE BOLT M10x90	pcs	1
11	72205-TA5A-010C	R PIN φ3x20x60	pcs	1
12	72202-T80A-31B5	WELDED PART OF HINGE COSRP	pcs	1
13	72205-TA5A-000C	R PIN φ2x9x38	pcs	1
14	B16674-1-08LG-020C	HEXAGON FLANGE BOLT M6x20	pcs	2

DRIVING PULLEY ASSY

This warranty is null & void, if you fail to register the warranty with KisanKraft by sending the KisanKraft Copy with dealer's stamp. KisanKraft Limited

Series No.	Part Code	English Name	Unit	Quantity for One Unit
1	B6170-08LG-000C	HEXAGON FLANGE NUTS M8	pcs	1
2	B95-080G-000C	FLAT WASHER 8	pcs	1
3	71414-T80A-100C	TENSIONER SPRING	pcs	1
4	B5789-06KG-016C	HEX FRANGE BOLT M6*P1.0*16/	pcs	1
5	71402-T80A-3000	DRIVEN PULLEY	pcs	1
6	B93-080G-000C	SPRING WASHER 8	pcs	1
7	71413-T80A-000C	TENSIONER SHAFT	pcs	1
8	71420-T80A-000B	TENSIONER ASSY	pcs	1
9	71404-T80A-1000	BELT (TYPE B 17*889)	pcs	2
10	71405-T80A-60RQ	BELT COVER	pcs	1
11	71405-T80A-60RQ	DOUBLE HEAD BOLT M10*P1.5*90	pcs	1
12	B5789-06KG-008C	HEX FRANGE BOLT M6*P1.0*16/	pcs	1
13	71406-T75A-10H4	INNER PLATE OF BELT COVER	pcs	1
14	71401-T80A-6100	DRIVING PULLEY	pcs	1
15	B16674-1-08LG-020C	HEX FRANGE BOLT M8*P1.25*25	pcs	2
16	71411-T75A-200C	TENSIONAL BLOCK B	pcs	1
17	B16674-1-08LG-016C	HEX FRANGE BOLT M8*P1.25*20	pcs	2
18	73003-T75A-00B5	LOCKING HANDLE	pcs	1

WHEEL ASSY



This warranty is null & void, if you fail to register the warranty with KisanKraft by sending the KisanKraft Copy with dealer's stamp. KisanKraft Limited

Series No.	Part Code	English Name	Unit	Quantity for One Unit
1	B6170-10MG-000C	HEXAGON FLANGE NUTSM10	pcs	16
2	B93-100G-000C	WASHER SPRING 10	pcs	8
3	B95-100G-000C	WASHER 10	pcs	8
4	75115-T80A-00B5	WHEEL SHAFT	pcs	2
5	75113-TA5A-00W2	INSIDE WHEEL HUB	pcs	2
6	75112-TA5A-0000	INNER TUBE 4.00-8	pcs	2
7	75111-TA5A-0000	OUTTER TUBE 4.00-8	pcs	2
8	75114-TA5A-00W2	OUTSIDE WHEEL HUB	pcs	2
9	B5783-10MG-025C	HEXAGON FLANGE BOLTM10x25	pcs	8

This warranty is null & void, if you fail to register the warranty with KisanKraft by sending the KisanKraft Copy with dealer's stamp. KisanKraft Limited

MUD DFENDER ASSY

Series No.	Part Code	English Name	Unit	Quantity for One Unit
1	79512-T80A-51B5	DISC	pcs	2
2	B5783-10MG-030C	HXAGON FLANGE BOLTM10x30	pcs	24
3	B95-100G-000C	WASHER 10	pcs	24
4	B93-100G-000C	WASHER SPRING 10	pcs	24
5	B6170-10MG-000C	HXAGON FLANGE NUT M10	pcs	24
6	79114-T80A-01B5	Blade (R)	pcs	12
7	79113-T80A-01B5	Blade (L)	pcs	12
8	79121-T75A-6300	VICE BLADE CYLINDER	pcs	2
9	79121-T75A-0000	BLADE CYLINDER	pcs	2
10	72205-TA5A-000C	R PIN ϕ 2×9×38	pcs	4
12	B882-0080-040C	B PIN 8×40	pcs	4

This warranty is null & void, if you fail to register the warranty with KisanKraft by sending the KisanKraft Copy with dealer's stamp. KisanKraft Limited

USER MANUAL



BEFORE GETTING STARTED

Thank you for your purchase and use of our products. To avoid accidents or injury, **please read this manual carefully** before using the machine. After reading, preserve it for further reference. This manual is a part of the gasoline engine and should be transferred when the machine is resold.

SAFETY LABELS

 **DANGER**

Indicates a hazard, if not avoided, can result in human injury or death.

 **WARNING**

Indicates a hazard, if not avoided, could result in human injury and/or property damage.

CAUTION

Indicates a hazard, if not avoided, might result in slight injury and/or property damage.



Please read and understand this owner's manual before operation of the engine to avoid accidents by familiarizing yourself with your engine's controls and safe operation procedures.

SAFETY INSTRUCTIONS

1. Please perform some pre-operation checks before operation to avoid human injury and equipment damage.
2. Keep the engine in good, ventilated places at least 1 meter away from buildings and other equipment's during operation and keep the flammable substances away from the engine to avoid fire.
3. Keep children and pets away from the operation area.

This warranty is null & void, if you fail to register the warranty with KisanKraft by sending the KisanKraft Copy with dealer's stamp. KisanKraft Limited

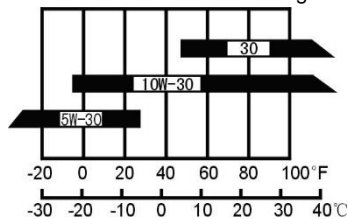
4. Make sure that the person who operates the engine receives proper instruction.
5. Keep the flammable substances (gasoline, matches) away from the operating engine.
6. As gasoline is extremely flammable and explosive under certain conditions, please refuel in a well-ventilated area with the engine stopped.
7. Do not fill above the shoulder of the fuel strainer.
8. Make sure the fuel cover is tightened.
9. Make sure that any spilled fuel has been wiped off before starting the engine.
10. Do not smoke or allow flames or sparks where the engine is refueled or where gasoline is stored.
11. Exhaust contains poisonous carbon monoxide, a colorless and odorless gas. Breathing exhaust can cause loss of consciousness and may lead to death. Do not operate the engine without good ventilation or in enclosed room.
12. If you run the engine in an area that is confined, or even partially enclosed, the air you breathe could contain a dangerous amount of exhaust gas. Provide adequate ventilation to keep exhaust gas from accumulation.
13. Place the engine on flat (level) surface, tilting angle of the engine should not be more than 20°, otherwise it will lead to fuel spilling out.
14. Do not cover the engine to avoid fire occurrence.
15. The muffler becomes very hot during and immediately after operation. Be careful not to touch the muffler while it is hot. Let the engine cool down before storing the engine indoor.

PRE-OPERATION CHECKS

Check the oil level

Lubricating oil:

- Engine lubricant oil is a major factor affecting engine performance and service life.
- The use of the lubricating oil free of cleaning agent or the lubricating oil for the two-stroke engine will shorten the life of the gasoline engine.
- The operating temperature range recommended for the gasoline engine is - 5°C~40°C.
- Use 4-stroke motor lubricant oil. 20W-40 is recommended in general, at all temperature use. Other viscosities shown in the chart may be used when the average temperature in your area is within the indicated range.

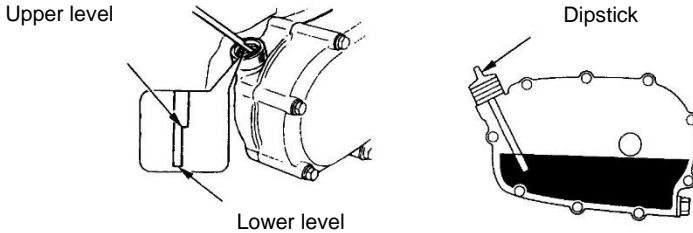


Ambient temperature

- Before checking engine lubricant oil, place the engine on level surface

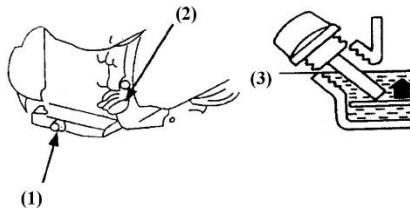
This warranty is null & void, if you fail to register the warranty with KisanKraft by sending the KisanKraft Copy with dealer's stamp. KisanKraft Limited

- Turn out the oil filler cap and clean the dipstick with a clean cloth.
- Insert the dipstick back into the oil filler hole without turning it in.
- If oil level is below the lower mark of the dipstick, fill oil to the upper level of the dipstick.
- Reinstall the oil filler cap properly.



Engine oil alert system (optional function):

The oil alert system is designed to prevent engine damage caused by insufficient oil in the crankcase. When the oil level in the crankcase falls below the safe limit, the oil alert system will automatically stop the engine even if the engine switch remains at the ON position. If the engine stops and cannot be restarted, check the engine oil level before troubleshooting in other areas.



(1) Drain plug

(2) Engine switch

(3) Lower level

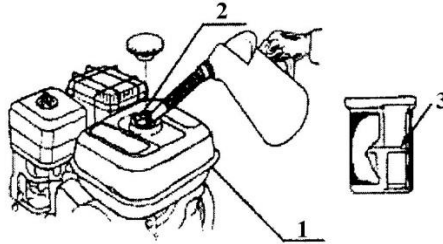
Fuel level

- Check the fuel gauge, and refill the tank if the fuel level is low. Do not fill above the shoulder of the fuel strainer. The fuel 90# gasoline is recommended.
- Unleaded gasoline produces less engine and spark plug fouling and extends exhaust system life.
- Never use stale or contaminated gasoline or oil/gasoline mixture. Avoid dirt, rubbish and water from getting into the fuel tank.
- If spark knock or pinging occurs at a steady engine speed under normal load, change brands of gasoline. If spark knock or pinging persists, see an authorized dealer.

! WARNING:

This warranty is null & void, if you fail to register the warranty with KisanKraft by sending the KisanKraft Copy with dealer's stamp. KisanKraft Limited

- Running the engine with persistent spark knock or pinging can cause engine damage.
- If persistent spark knocks or pinging is caused by improper usage of the unit, the Distributor's Limited Warranty does not cover parts damaged by that.



(1) Fuel tank

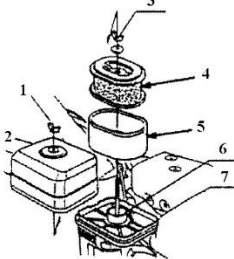
(2) Fill in hole

(3) Red line level

Air cleaner

The air cleaner is a dry type including paper element and foam element.

- Remove the clip and dismantle the air cleaner housing or remove the wing nuts and air cleaner cover.
- Wash the element in solution of household detergent and warm water, then rinse thoroughly, or wash in nonflammable or high flash point solvent. Allow the element to dry thoroughly



- 1) Butterfly nut
- 2) Air cleaner cover
- 3) Butterfly nut
- 4) Paper element
- 5) Foam element
- 6) Seal washer
- 7) Silencer plate

! WARNING:

Do not run the engine without air cleaner.

! DANGER

Using gasoline or flammable solvent to clean the filter element can cause a fire or explosion.

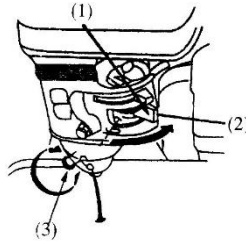
! CAUTION:

Do not run the engine without air cleaner core, otherwise dust and/or other foreign matters may get into the engine through carburetor, and results in rapid engine worn-out.

STARTING THE ENGINE

This warranty is null & void, if you fail to register the warranty with KisanKraft by sending the KisanKraft Copy with dealer's stamp. KisanKraft Limited

- Turn the fuel valve to ON position, unscrew the drain plug on carburetor bottom, and fasten the drain plug until oil spills out.
- Pull the choke rod to the CLOSE position. Adjust throttle to proper position. Pull the starter grip lightly until resistance is felt, then pull it rapidly



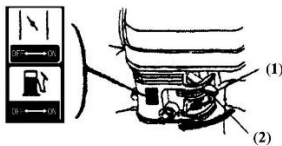
(1) Fuel Valve

(2) Start Level

(3) Drain Plug

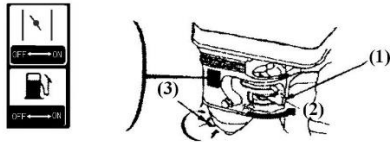
NOTE:

- Do not allow the starter grip to snap back against the engine. Return it gently to prevent damage to the starter.
- Once the engine got started, let it run for 1~3 minutes at idle speed, check whether it is balanced, cracked, then pull the throttle to open position, adjust choke rod to OPEN.



(1) Auto-Throttle

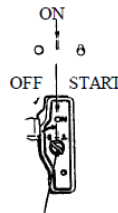
(2) Off Position



(3) Starter Knob

Electrical Starting:

Turn the engine switch to START position and hold a while until the engine started



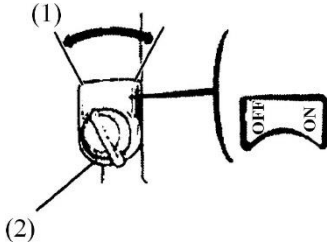
ENGINE SWITCH

This warranty is null & void, if you fail to register the warranty with KisanKraft by sending the KisanKraft Copy with dealer's stamp. KisanKraft Limited

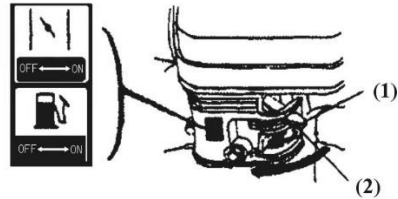
NOTE: Restrict the starting time within 5 seconds to avoid engine damage. If engine cannot be started, release starter knob, retry after 10 seconds.

STOPPING THE ENGINE

Adjust throttle to proper position. Reduce engine speed, close the choke. Turn engine switch to OFF position.



(1) Throttle knob



(2) Throttle is at OFF

! DANGER:

- Gasoline is extremely flammable and explosive under certain conditions.
- Refuel in well-ventilated places with the engine stopped. Do not smoke or allow flames or sparks near the places where the engine is refueled or gasoline is stored.
- Do not add fuel over the shoulder of strainer. After fueling, tighten the tank cover.
- Fuel vapors are extremely flammable and may ignite after the engine has started. Make sure that any fuel spillage has been wiped off before starting the engine.
- Avoid skin coming in contact with gasoline for a long time, avoid breathing in gasoline vapors. Keep children away from them.

NOTE:

Fuel can damage paint and plastics. Be careful when refueling. Damage caused by spilling fuel is not covered under warranty.

MAINTENANCE

Do periodic maintenance to keep the engine in good condition. Always follow the inspection and maintenance recommendation and schedules given in this manual.

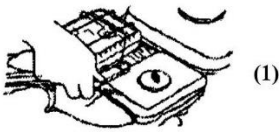
! WARNING:

Stop the engine before doing any maintenance work. If the engine must be operated, provide adequate ventilation. Breathing in exhaust can cause loss of consciousness and even lead to death.

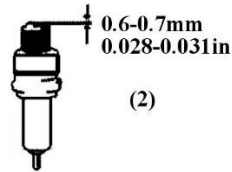
Everyday Maintenance:

This warranty is null & void, if you fail to register the warranty with KisanKraft by sending the KisanKraft Copy with dealer's stamp. KisanKraft Limited

1. **Air cleaner:** A dirty air cleaner will restrict air flow into the carburetor. To prevent carburetor malfunction, service the air cleaner regularly. Service more frequently when operating the generator in extremely dusty areas.
 - Check air cleaner core, get rid of fouling, and keep the core clean.
 - Check bolts, fasten the loose ones.
 - Check whether lubricant oil level is within the limits.
2. Clean the core after 25hrs of engine run
3. Clean carbon fouling of the spark plug after working up to 50hrs. Check the clearance, and adjust the gap to 0.6-0.7mm (see figure 4-1). Check radiator, and clean fouling among radiators.
 - Drain the oil while the engine is warm to assure rapid and complete draining.
 - Remove the drain plug and sealing washer, remove the oil filler cap, and drain the oil.
 - Reinstall the drain plug and sealing washer. Tighten the plug securely.
 - Refill with the recommended oil and check the oil level.

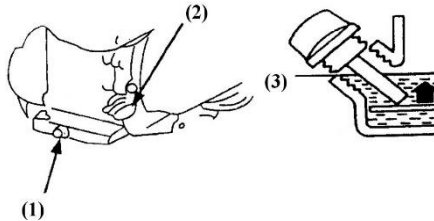


(1) Dismantle Spark Plug



(2) Adjust Clearance

4. Clean the fuel tank and filter when working time reaches 100hrs: Remove the fuel cover, drop out filter, and wash it with brush slightly. Remove fuel tank, clean the fouling and water inside fuel tank. Reinstall fuel tank, place filter from fill-in hole, filling the clean fuel to red line level.



1) Drain plug

2) Engine switch

3) Lower level

Check aging of fuel pipe every 2 years. If ageing, hardening and cracking is detected, have it replaced. Tighten the joints, and check leakage.

Before storing the unit for an extended period:

This warranty is null & void, if you fail to register the warranty with KisanKraft by sending the KisanKraft Copy with dealer's stamp. KisanKraft Limited

1. Make sure the storage area is free of excessive humidity and dust.
2. Service according to the table below.

Storage Time	Recommended Service Procedure To Prevent Hard Starting
Less than 1 month	No preparation required
1 to 2 months	Fill with fresh gasoline and add gasoline conditioner
2 months to 1 year	<ul style="list-style-type: none"> • Fill with fresh gasoline and add gasoline conditioner • Drain the carburetor float bowl • Drain the fuel sediment cup

STORAGE

If the engine is not used for a long time, do the necessary maintenance before its storage.

- Firstly, take off the fuel tank, drain out all fuel, and clean the dirt and water inside the tank. Open the fuel cock, unscrew the drain plug at the bottom of carburetor, drain out fuel in carburetor thoroughly, and then tighten the drain plug.
- Secondly, unscrew the drain plug at the bottom of the crankcase and drain out the lubricant oil in the crankcase thoroughly, then tighten the drain plug.
- Finally, clean the surface of the engine with clean cloth, remove the dirt and dust etc. Then store the engine in a well-ventilated, dirt-free place.

TRANSPORTATION

- Contact with the hot engine or exhaust system can cause serious burns or fires. Allow the engine to cool down before transporting or storing the engine.
- During transport of the engine, turn the engine switch and the fuel valve to OFF. Keep the engine cool.

TROUBLESHOOTING

1. The Engine Can't Start

- Have the engine checked if it is hard to or cannot be started.
- Firstly, check the fuel level of the fuel tank. Turn fuel valve to (2), Fuel should flow from the drain when the fuel valve is turned ON. Tighten the drain plug. (Refer to starting of the engine)

2. Spark Plug

Check the spark plug. Remove the spark plug cap and clean any dirt around it. If the engine still cannot be started after repeating several times, please see the authorized dealer. Users are not allowed to dismantle or reassemble the unit by themselves.

3. Not Enough Power

- Check the air-cleaners. Please refer the maintenance inspection book to clear the air-cleaner.

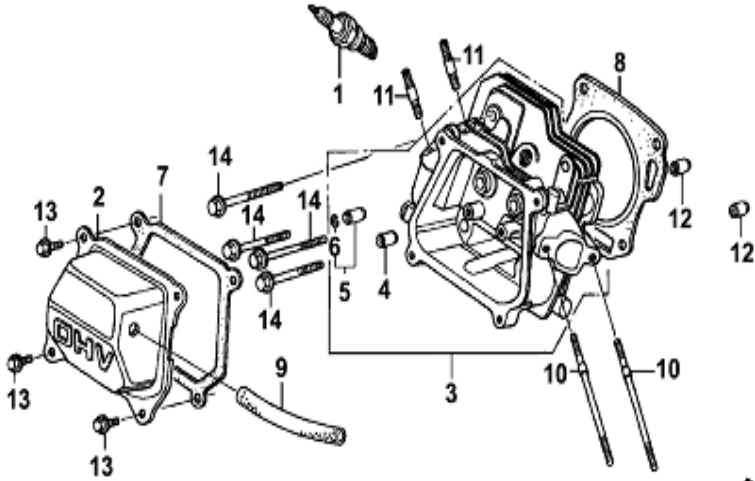
This warranty is null & void, if you fail to register the warranty with KisanKraft by sending the KisanKraft Copy with dealer's stamp. KisanKraft Limited

- Check the fuel. Please strain out the gasoline in fuel tank and in carburetor, and fill in new gasoline.
- For any other trouble, please contact our dealer.

This warranty is null & void, if you fail to register the warranty with KisanKraft by sending the KisanKraft Copy with dealer's stamp. KisanKraft Limited

ENGINE PARTS DIAGRAM & LIST

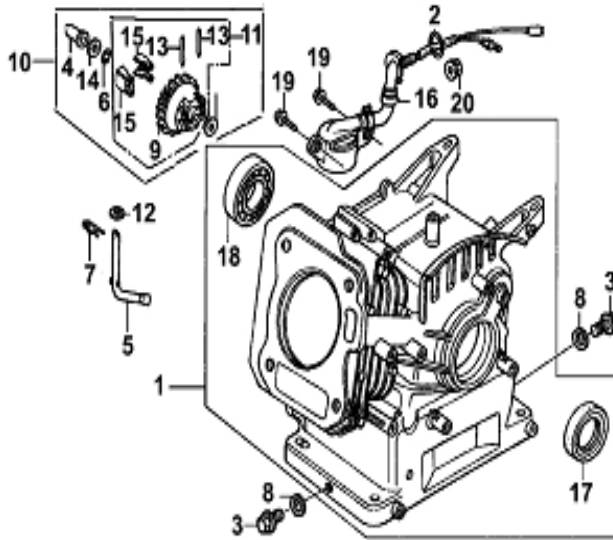
Cylinder Head



SL-No	KK-No	KK-Name	Qty
1	E3-01	Spark plug	1
2	E3-02	Cylinder head cover	1
3	E3-03	Cylinder head Assy	1
4	E3-04	In. valve guide	1
5	E3-05	Ex. valve guide	1
6	E3-06	Valve guide clip	1
7	E3-07	Gasket Cylinder head cover	1
8	E3-08	Gasket Cylinder head	1
9	E3-09	Air duck/Pipe	1
10	E3-10	Stud Intake Port M6 x 113	2
11	E3-11	Stud Exhaust Port M8 x 32	2
12	E3-12	Set pin 10x14	2
13	E3-13	Bolt M6x12	4
14	E3-14	Bolt M8 x 60,	4

This warranty is null & void, if you fail to register the warranty with KisanKraft by sending the KisanKraft Copy with dealer's stamp. KisanKraft Limited

Crankcase Assembly

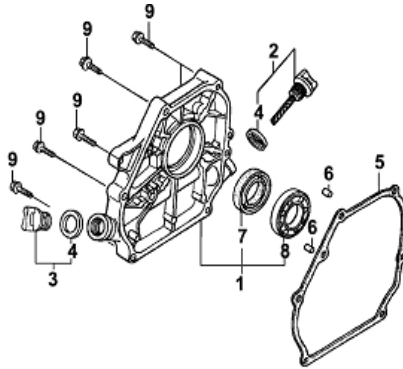


This warranty is null & void, if you fail to register the warranty with KisanKraft by sending the KisanKraft Copy with dealer's stamp. KisanKraft Limited

SL-No	KK-No	KK-Name	Qty
1	E4-01	Crankcase Body	1
2	E4-02	O-ring 14mm	1
3	E4-03	Drain bolt	2
4	E4-04	N/A	1
5	E4-05	Sway bar	1
6	E4-06	N/A	1
7	E4-07	Split Clip	1
8	E4-08	Washer Drain bolt	2
9	E4-09	N/A	1
10	E4-10	Centrifugal gear Parts	1
11	E4-11	N/A	1
12	E4-12	Plain washer 6mm	2
13	E4-13	N/A	2
14	E4-14	N/A	1
15	E4-15	N/A	2
16	E4-16	Oil sensor Assy	1
17	E4-17	Oil seal crankcase(25*41.25*6)	1
18	E4-18	Ball Bearing 6205	1
19	E4-19	Bolt M6 x 14	2
20	E4-20	Nut M10	1

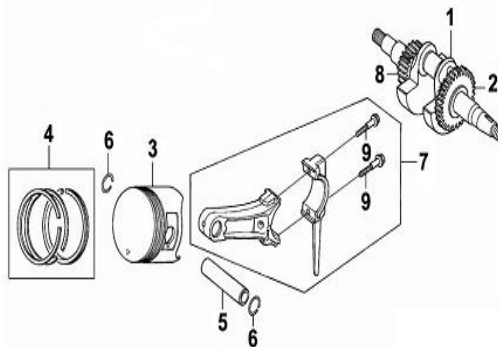
This warranty is null & void, if you fail to register the warranty with KisanKraft by sending the KisanKraft Copy with dealer's stamp. KisanKraft Limited

Crankcase Cover



SL-No	KK-No	KK-Name	Qty
1	E5-01	Crankcase cover	1
2	E5-02	Oil Gauge	1
3	E5-03	Oil Plug assembly	1
4	E5-04	seal-oil gauge	2
5	E5-05	Gasket crankcase	1
6	E5-06	Set pin 8X14	2
7	E5-07	Oil Seal 25x41.25x6	1
8	E5-08	Ball Bearing 6205	1
9	E5-09	Bolt M8 x 30	6

Crankshaft Piston

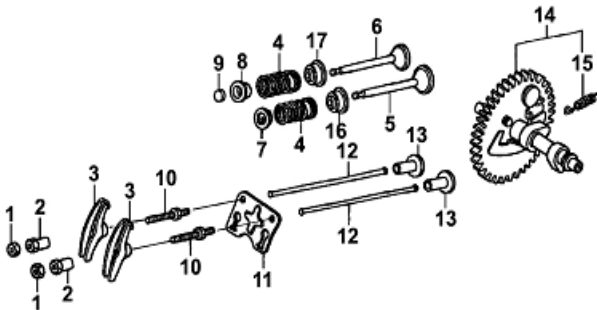


SL-No	KK-No	KK-Name	Qty
-------	-------	---------	-----

This warranty is null & void, if you fail to register the warranty with KisanKraft by sending the KisanKraft Copy with dealer's stamp. KisanKraft Limited

1	E6-01	Crankshaft Assy	1
2	E6-02	Governor Gear	1
3	E6-03	Piston	1
4	E6-04	Piston Ring Assy	1
5	E6-05	Piston Pin	1
6	E6-06	Clip Piston Pin	2
7	E6-07	Connecting rod Assy	1
8	E6-08	Timing Gear	1
9	E6-09	Bolt connecting rod M7x35	2

Camshaft

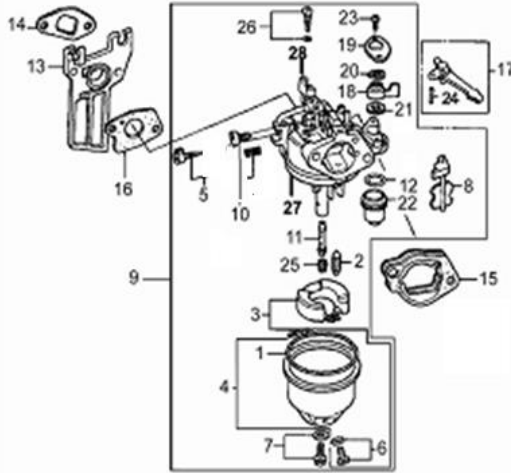


SL-No	KK-No	KK-Name	Qty
	E7-1,2,3,10	Rocker Assy	1
1	E7-01	Buy Rocker Assy	
2	E7-02	Buy Rocker Assy	
3	E7-03	Buy Rocker Assy	
4	E7-04	Valve Spring	2
5	E7-05	Intake Valve	1
6	E7-06	Exhaust Valve	1
7	E7-07	Spring seat Intake Valve	1
8	E7-08	Spring Seat Exhaust Valve	1
9	E7-09	Cap Exhaust Valve	1
10	E7-10	Buy Rocker Assy	2
11	E7-11	Pusher guide	1
12	E7-12	Pusher	2
13	E7-13	Tappet	2
14	E7-14	Cam Shaft Assy	1
15	E7-15	N/A	1
16	E7-16	N/A	1

This warranty is null & void, if you fail to register the warranty with KisanKraft by sending the KisanKraft Copy with dealer's stamp. KisanKraft Limited

SL-No	KK-No	KK-Name	Qty
17	E7-17	Inlet valve oil seal	1

Carburetor

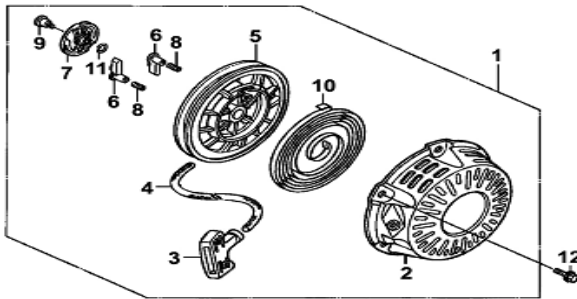


SL-No	KK-No	KK-Name	Qty
1	E8-01	Rubber seal (Fuel cup)	1
2	E8-02	Needle Valve	1
3	E8-03	Fuel Floater	1
4	E8-04	Fuel cup	1
5	E8-05	Adjustment screw Idle speed	1
6	E8-06	Screw(Fuel Cup)	1
7	E8-07	Tighten bolt (Fuel cup)	1
8	E8-08	Chock Valve Assy	1
9	E8-09	Carburetor Assy	1
10	E8-10	Adjustment Screw Assy (mixture ratio)	1
11	E8-11	Main Nozzle	1
12	E8-12	O-ring 21x2(Sediment cup)	1
13	E8-13	Block, Carburetor/Insulator	1
14	E8-14	Gasket, inlet port	1
15	E8-15	Steel gasket	1
16	E8-16	Gasket carburetor	1
17	E8-17	Hand grip chock valve assy	1
18	E8-18	Handle Bar Fuel on/off	1
19	E8-19	Upper cover(Fuel on/off)	1

This warranty is null & void, if you fail to register the warranty with KisanKraft by sending the KisanKraft Copy with dealer's stamp. KisanKraft Limited

SL-No	KK-No	KK-Name	Qty
20	E8-20	Spring Washer-(Fuel on/off)	1
21	E8-21	Fuel Valve	1
22	E8-22	Sediment cup	1
23	E8-23	Screw M3x7	2
24	E8-24	N/A	1
25	E8-25	Main jet	1
26	E8-26	Measure hole Assy idle speed	1
27	E8-27	N/A	1
28	E8-28	N/A	1

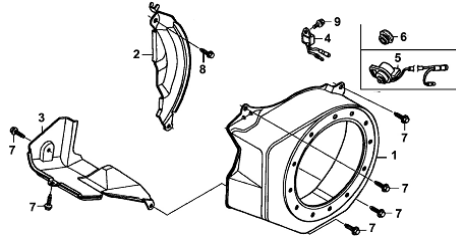
Recoil Starter



SL-No	KK-No	KK-Name	Qty
1	E9-01	Recoil Starter Assy	1
2	E9-02	Starter cover	1
3	E9-03	Pulling handle	1
4	E9-04	Rope	1
5	E9-05	Roller/Rope Reel	1
6	E9-06	Ratchet	2
7	E9-07	Ratchet guide	1
8	E9-08	Ratchet Spring	2
9	E9-09	Pivot Bolt	1
10	E9-10	Starter spring	1
11	E9-11	Friction Spring 16x1	1
12	E9-12	Bolt M6x12 Flanged Hex	3

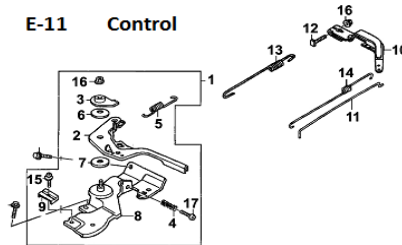
Fan Cover

This warranty is null & void, if you fail to register the warranty with KisanKraft by sending the KisanKraft Copy with dealer's stamp. KisanKraft Limited



SL-No	KK-No	KK-Name	Qty
1	E10-01	Fan cover	1
2	E10-02	Side Plate	1
3	E10-03	Wind guide	1
4	E10-04	Current Amplifier	1
5	E10-05	Engine switch	1
6	E10-06	N/A	1
7	E10-07	Bolt M6x12 Flanged Hex	6
8	E10-08	Bolt M6 x 20 Flanged Hex	1

Control

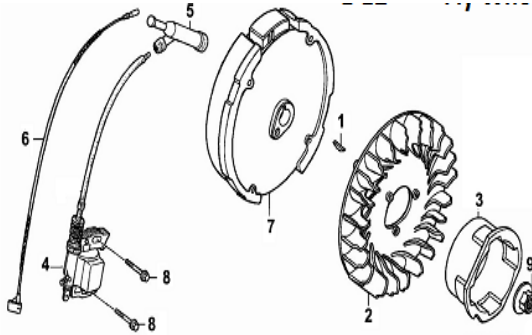


SL-No	KK-No	KK-Name	Qty
1	E11-01	Speed Adjustment Base Ass.	1
2	E11-02	N/A	1
3	E11-03	N/A	1
4	E11-04	Adjustment Spring	1
5	E11-05	Throttle spring	1
6	E11-06	N/A	1
7	E11-07	N/A	2
8	E11-08	N/A	1
9	E11-09	N/A	1
10	E11-10	Speed Adjustment arm	1
11	E11-11	Pulling Rod	1

This warranty is null & void, if you fail to register the warranty with KisanKraft by sending the KisanKraft Copy with dealer's stamp. KisanKraft Limited

SL-No	KK-No	KK-Name	Qty
12	E11-12	Quadrante bolt M6x21	1
13	E11-13	Return Spring	1
14	E11-14	Fine Adjustment Spring	1
15	E11-15	N/A	1
16	E11-16	Nut M6 Flanged Nylon	1
17	E11-17	Adjustment Screw	2

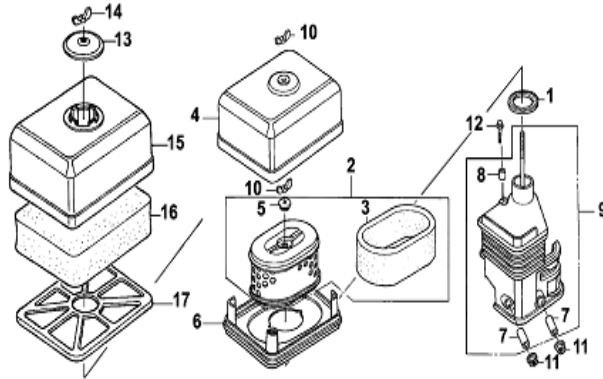
Fly Wheel



SL-No	KK-No	KK-Name	Qty
1	E12-01	Woodruff key	1
2	E12-02	Fly Wheel Fan	1
3	E12-03	Starter Sleeve	1
4	E12-04	Ignition Coil Assy	1
5	E12-05	Spark Plug Cap	1
6	E12-06	Stop lead	1
7	E12-07	Fly Wheel Assy	1
8	E12-08	Bolt 6 x 25	2
9	E12-09	Nut M14 Fly wheel Assy	1

Air Cleaner

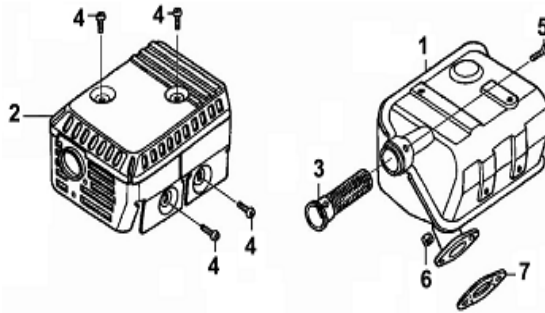
This warranty is null & void, if you fail to register the warranty with KisanKraft by sending the KisanKraft Copy with dealer's stamp. KisanKraft Limited



SL-No	KK-No	KK-Name	Qty
	E13	Air Cleaner Assy	1
1	E13-01	Seal Ring 32x47x3	1
2	E13-02	Air Filter Element	1
3	E13-03	N/A	1
4	E13-04	Filter Case	1
5	E13-05	Rubber Fixer	1
6	E13-06	Cover board	1
7	E13-07	N/A	2
8	E13-08	N/A	1
9	E13-09	Air Cleaner Seat Assy	1
10	E13-10	Butter Fly nut M6	2
11	E13-11	Nut M6	2
12	E13-12	ST Screw M4 x 12	1
13	E13-13	N/A	1
14	E13-14	N/A	1
15	E13-15	N/A	1
16	E13-16	N/A	1
17	E13-17	N/A	1

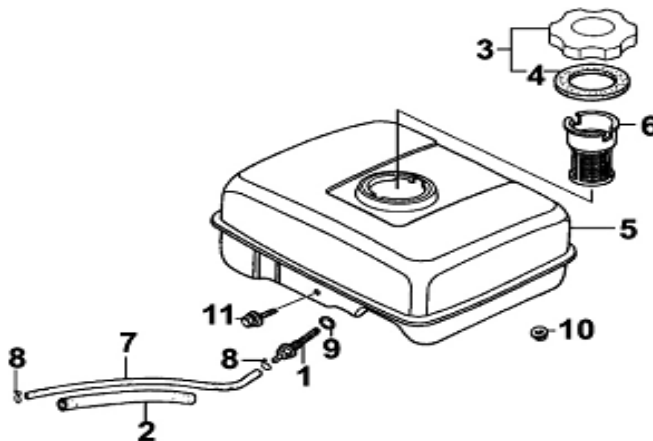
This warranty is null & void, if you fail to register the warranty with KisanKraft by sending the KisanKraft Copy with dealer's stamp. KisanKraft Limited

Muffler



SL-No	KK-No	KK-Name	Qty
1	E14-01	Muffler Assy	1
2	E14-02	N/A	1
3	E14-03	N/A	1
4	E14-04	Screw M5 x 8	4
5	E14-05	N/A	1
6	E14-06	Nut M8	2
7	E14-07	Gasket Muffler	1

Fuel tank



This warranty is null & void, if you fail to register the warranty with KisanKraft by sending the KisanKraft Copy with dealer's stamp. KisanKraft Limited

SL-No	KK-No	KK-Name	Qty
1	E15-01	Fuel outlet joint	1
2	E15-02	Sleeve Fuel pipe	1
3	E15-03	Fuel tank cap	1
4	E15-04	Gasket Fuel tank Cap	1
5	E15-05	Fuel tank	1
6	E15-06	Fuel Filter	1
7	E15-07	Fuel Tube M4.5x140	1
8	E15-08	Clip Fuel tube	2
9	E15-09	O-ring 14mm(Fuel outlet joint)	1
10	E15-10	Nut M6 Flanged	2
11	E15-11	Bolt M6x30 Flanged Hex	1

Technical Details

Displacement	208 cc
Bore * Stroke	68*54 mm
Related Power	4.1 kw (5.49 hp) / 3600 RPM
Fuel Tank	3.6 L
Max Torque	11 N.m /2500 RPM
Oil Tank	0.6L
Net Weight	17kg

This warranty is null & void, if you fail to register the warranty with KisanKraft by sending the KisanKraft Copy with dealer's stamp. KisanKraft Limited

KisanKraft has a large range of products to serve the farmers. A list of our products is given below:

<p>Brush Cutters and Accessories</p> <ul style="list-style-type: none">Brush Cutter/Power WeederBackpack Brush CutterTea PrunerPole pruner with EngineReaper AttachmentBlades-CircularBlades (2 & 3 points)BaffleNylon RopeTap & Go <p>Chainsaws</p> <ul style="list-style-type: none">Petrol ChainsawElectric ChainsawChain Sharpening Machine <p>Engines and Water Pumps</p> <ul style="list-style-type: none">Engine –Diesel-(Horizontal)Engine –Diesel(Vertical)Engine-KeroseneWater Pump with Petrol EngineWater Pump with Kerosene EngineWater Pump with Diesel Engine <p>Hand Tools</p> <ul style="list-style-type: none">SecateursFolding SawGarden RakeGarden ShovelHedge ShearLopperTelescopic Hedge ShearTelescopic Lopping ShearTree PrunerTelescopic Steel Pipe & Fruit Picker BagSheep Shear <p>Garden Tools</p> <ul style="list-style-type: none">Electric Pressure WasherHedge TrimmerLawn Mower (Electric, Petrol & Manual)Leaf Blower	<p>Cultivators and Accessories</p> <p>Petrol and Diesel</p> <p>Sprayers and Accessories</p> <ul style="list-style-type: none">Battery SprayerPortable Power SprayerTrolley SprayerManual Knapsack SprayerManual Pressure SprayerRose CansHose Crimping MachineHTP SprayerHTP Delivery HoseHTP Hose ReelHTP StandHTP Gun / Lance(Brass Rod)Knapsack Power SprayerMister / Duster / Granule SpreaderHTP Sprayer Set with Diesel EngineHTP Sprayer Set with Kerosene EngineFogging Machine <p>Milking Machine</p> <ul style="list-style-type: none">Wood ShredderFodder Ensiling Chaff CutterFodder Grinder Chaff CutterFodder Mini Chaff Cutter <p>Harvester</p> <ul style="list-style-type: none">Maize ShellerMaize Sheller + DE huskerMaize Combine HarvesterOnion Digger Carlotta ItalyTea Leaf HarvesterSugarcane Combine HarvesterSugarcane Leaf Stripper <p>Transplanter and Post Hole Digger</p> <ul style="list-style-type: none">Paddy Transplanter (2 & 8 Rows)Transplanter-Vegetable & TobaccoPost Hole Digger(4" to 14"Augers)
-------------------------------------------------------------------------------------------------------------------------------------------------------------------------------------------------------------------------------------------------------------------------------------------------------------------------------------------------------------------------------------------------------------------------------------------------------------------------------------------------------------------------------------------------------------------------------------------------------------------------------------------------------------------------------------------------------------------------------------------------------------------------------------------------------------------------------------------------------------------------------------------------------------------------------------------------------------------------------------------------------------------------------------------------------------------------------------------------------------------------------------------------------------------------------------------------------------------------------------------------------------------------------------------------------------------------------------------------------	-------------------------------------------------------------------------------------------------------------------------------------------------------------------------------------------------------------------------------------------------------------------------------------------------------------------------------------------------------------------------------------------------------------------------------------------------------------------------------------------------------------------------------------------------------------------------------------------------------------------------------------------------------------------------------------------------------------------------------------------------------------------------------------------------------------------------------------------------------------------------------------------------------------------------------------------------------------------------------------------------------------------------------------------------------------------------------------------------------------------------------------------------------------------------------------------------------------------------------------------------------------------------------------------------------------------------------------------------------------------------------------------------

Wide Range of Products for Every Need

This warranty is null & void, if you fail to register the warranty with KisanKraft by sending the KisanKraft Copy with dealer's stamp. KisanKraft Limited



For more information give **MISSED CALL: 07676065555**



Many of our products have BIS: ISI certification.



This warranty is null & void, if you fail to register the warranty with KisanKraft by sending the KisanKraft Copy with dealer's stamp. KisanKraft Limited

🌐: www.kisankraft.com

✉: info@kisankraft.com

☎: +91.80. 6835 7800

Product	Agricultural Inter-Culti- vator	KisanKraft Invoice Date	
Brand	KisanKraft	KisanKraft Invoice No.	
Model	☐ KK-IC-210P		
WARRANTY PERIOD	6 MONTHS	FOR THE SPECIFIED PERIOD FROM THE DATE OF SALE OR DELIVERY WHICHEVER IS EARLIER.	
Dealer's Invoice Date		Dealer's Invoice No.	
Buyer's Info (Name, Address, Phone, etc.):		Dealer's Stamp (Address, Phone, TIN, etc.):	
Buyer's Sign		Dealer's Sign	

Warranty Policy

What is covered: KisanKraft Limited and its manufacturers warrant this product to be free from defects in material or workmanship. All parts defective in material and workmanship are covered.

This warranty will only cover defects arising under normal usage.

This warranty is limited to repair or replacement by KisanKraft Limited or its manufacturers of such parts as appear to KisanKraft or its manufacturers, upon inspection, to be defective in material and/or workmanship. KisanKraft or its manufacturers make no warranty with respect to items not manufactured or sold by them. No onsite warranty is provided by KisanKraft Limited or its manufacturers. Defective items must be brought/sent to our Authorized Dealer or KisanKraft Limited's office for service.

What is not covered: The *warranty shall become null and void* and neither KisanKraft Limited nor any of its manufacturers, nor its authorized dealers assumes any responsibility, if the failure was caused by the following:

(1) Operation of product with incorrect fuel or lubricants, (2) Incorrect usage of machine or misuse, (3) Lack of maintenance, (4) Negligence, (5) Accident or physical damage, (6) Repairs made by unauthorized parties and/or with unauthorized parts, (7) Improper set up, adjustments, tampering or altered products (8) Any modification to the product what-so-ever.

Important: (1) Normal maintenance and adjustments to the product is the responsibility of the customer. (2) Normal wear and tear are not covered under warranty. (3) Rubber/plastic parts and consumables such as blades, clutch and clutch-bell, sparkplugs, nylon line, air-filters, fuel-filters, oil seals and gaskets etc. are not covered under the warranty. (4) Electrical Motor, Electrical Parts, Battery Etc. are not covered under the warranty.

Incidental / Consequential Loss: KisanKraft Limited or its manufacturers will not be liable for general damages, including bodily injuries, or for incidental or consequential damages

This warranty is null & void, if you fail to register the warranty with KisanKraft by sending the KisanKraft Copy with dealer's stamp. KisanKraft Limited

including, but not limited to, loss of use, loss of profits, loss of production, expense of substitute equipment or other commercial loss or damage.

Limitation of Liability: This limited warranty is in lieu of all other express warranties, obligations, or liabilities. Any implied warranties, obligations or liabilities, including, but not limited to, any implied warranty of merchantability shall be limited in duration to the applicable warranty period. Any action for breach of any warranties hereunder, including, but not limited to, any implied warranty of merchantability must be brought within the applicable warranty period.

Modifications of Warranty: No agent, representative, dealer, or employee of KisanKraft Limited or any of its manufacturers has the authority to increase or alter the obligations of this warranty.

Assignment / Transfer of warranty: The warranty cannot be assigned and shall not transfer if the product is resold by the first buyer. The above warranties are extended to the first end user (original purchaser), and no warranty is made, nor authorized to be made assignable on resale by the first end user.

What you must do to obtain limited warranty service: To obtain performance of any obligation under this warranty for failure during the applicable warranty period, you must deliver the defective product, to the nearest Authorized Dealer, along with proof-of-purchase (invoice/receipt). KisanKraft Limited, its manufacturers and its dealers reserve the right to inspect the claimed defective part(s) to determine if the malfunction is the result of a defect covered by this warranty. Please note that the decision of KisanKraft Limited with respect to any warranty claim is final.

After-sales Service (Including Warranty): KisanKraft Limited does not sell directly to consumers. All sales or supplies are made through Authorized Dealers. It is the responsibility of the Authorized Dealer to provide all after-sales service to consumers. Any warranty claim should be raised by dealer to KisanKraft Limited as per warranty policy.

Jurisdiction: All disputes are subject to Bangalore court's jurisdiction.

Notes:

- This purchase is not contingent upon a product demonstration. The purchaser shall satisfy himself with the product, including any product demonstration or verification of any function, before buying. KisanKraft Limited or its authorized dealers, including online sellers, shall not be liable to give any on-site demonstration after purchase of any of the product.
- Any product once used will not be taken back by KisanKraft Limited.
- Warranty and After Sale Services (including but not limited to installation, Demonstration, Repair, Routine Maintenance etc.), should be done through the Authorized Dealer selling this product.
- Dealers should have their own technician to provide After Sales Services to their Customers. KisanKraft Limited provides free training to Authorized Dealer's technicians at KisanKraft Limited's head office, on request from Authorized Dealer.

This warranty is null & void, if you fail to register the warranty with KisanKraft by sending the KisanKraft Copy with dealer's stamp. KisanKraft Limited