

**Incidental / Consequential Loss:** KisanKraft Limited or its manufacturers will not be liable for general damages, including bodily injuries, or for incidental or consequential damages including, but not limited to, loss of use, loss of profits, loss of production, expense of substitute equipment or other commercial loss or damage.

**Limitation of Liability:** This limited warranty is in lieu of all other express warranties, obligations, or liabilities. Any implied warranties, obligations or liabilities, including, but not limited to, any implied warranty of merchantability shall be limited in duration to the applicable warranty period. Any action for breach of any warranties hereunder, including, but not limited to, any implied warranty of merchantability must be brought within the applicable warranty period.

**Modifications of Warranty:** No agent, representative, dealer, or employee of KisanKraft Limited or any of its manufacturers has the authority to increase or alter the obligations of this warranty.

**Assignment / Transfer of warranty:** The warranty cannot be assigned and shall not transfer if the product is resold by the first buyer. The above warranties are extended to the first end user (original purchaser), and no warranty is made, nor authorized to be made assignable on resale by the first end user.

**What you must do to obtain limited warranty service:** To obtain performance of any obligation under this warranty for failure during the applicable warranty period, you must deliver the defective product, to the nearest Authorized Dealer, along with proof-of-purchase (invoice/receipt). KisanKraft Limited, its manufacturers and its dealers reserve the right to inspect the claimed defective part(s) to determine if the malfunction is the result of a defect covered by this warranty. Please note that the decision of KisanKraft Limited with respect to any warranty claim is final.

**After-sales Service (Including Warranty):** KisanKraft Limited does not sell directly to consumers. All sales or supplies are made through Authorized Dealers. It is the responsibility of the Authorized Dealer to provide all after-sales service to consumers. Any warranty claim should be raised by dealer to KisanKraft Limited as per warranty policy.

**Jurisdiction:** All disputes are subject to Bangalore court’s jurisdiction.

**Notes:**

- This purchase is not contingent upon a product demonstration. The purchaser shall satisfy himself with the product, including any product demonstration or verification of any function, before buying. KisanKraft Limited or its authorized dealers, including online sellers, shall not be liable to give any on-site demonstration after purchase of any of the product.
- Any product once used will not be taken back by KisanKraft Limited.
- Warranty and After Sale Services (including but not limited to installation, Demonstration, Repair, Routine Maintenance etc.), should be done through the Authorized Dealer selling this product.
- Dealers should have their own technician to provide After Sales Services to their Customers. KisanKraft Limited provides free training to Authorized Dealer’s technicians at KisanKraft Limited’s head office, on request from Authorized Dealer

Product	<b>AGRICULTURAL ORCHARD SPRAYER</b>	KisanKraft Invoice Date	
Brand	<b>KisanKraft</b>	KisanKraft Invoice No.	
Model	<b>☐ KK-ABOS-0750</b>		
<b>WARRANTY PERIOD</b>	<b>6-MONTHS</b>	FOR THE SPECIFIED PERIOD FROM THE DATE OF SALE OR DELIVERY WHICHEVER IS EARLIER.	
Dealer's Invoice Date		Dealer's Invoice No.	
Buyer's Info (Name, Address, Phone, etc.):		Dealer's Stamp (Address, Phone, TIN, etc.):	
Buyer's Sign		Dealer's Sign	

**Warranty Policy**

**What is covered:** KisanKraft Limited and its manufacturers warrant this product to be free from defects in material or workmanship. All parts defective in material and workmanship are covered. This warranty will only cover defects arising under normal usage.

This warranty is limited to repair or replacement by KisanKraft Limited or its manufacturers of such parts as appear to KisanKraft or its manufacturers, upon inspection, to be defective in material and/or workmanship. KisanKraft or its manufacturers make no warranty with respect to items not manufactured or sold by them. No onsite warranty is provided by KisanKraft Limited or its manufacturers. Defective items must be brought/sent to our Authorized Dealer or KisanKraft Limited’s office for service.

**What is not covered:** The warranty shall become null and void and neither KisanKraft Limited nor any of its manufacturers, nor its authorized dealers assumes any responsibility, if the failure was caused by the following:

- (1) Operation of product with incorrect fuel or lubricants, (2) Incorrect usage of machine or misuse, (3) Lack of maintenance, (4) Negligence, (5) Accident or physical damage, (6) Repairs made by unauthorized parties and/or with unauthorized parts, (7) Improper set up, adjustments, tampering or altered products (8) Any modification to the product what-so-ever.

**Important:** (1) Normal maintenance and adjustments to the product is the responsibility of the customer. (2) Normal wear and tear are not covered under warranty. (3) Rubber/plastic parts and consumables such as blades, clutch and clutch-bell, sparkplugs, nylon line, air-filters, fuel-filters, oil seals and gaskets etc. are not covered under the warranty. (4) Electrical Motor, Electrical Parts, Battery Etc. are not covered under the warranty.

**Incidental / Consequential Loss:** KisanKraft Limited or its manufacturers will not be liable for general damages, including bodily injuries, or for incidental or consequential damages including,

but not limited to, loss of use, loss of profits, loss of production, expense of substitute equipment or other commercial loss or damage.

**Limitation of Liability:** This limited warranty is in lieu of all other express warranties, obligations, or liabilities. Any implied warranties, obligations or liabilities, including, but not limited to, any implied warranty of merchantability shall be limited in duration to the applicable warranty period. Any action for breach of any warranties hereunder, including, but not limited to, any implied warranty of merchantability must be brought within the applicable warranty period.

**Modifications of Warranty:** No agent, representative, dealer, or employee of KisanKraft Limited or any of its manufacturers has the authority to increase or alter the obligations of this warranty.

**Assignment / Transfer of warranty:** The warranty cannot be assigned and shall not transfer if the product is resold by the first buyer. The above warranties are extended to the first end user (original purchaser), and no warranty is made, nor authorized to be made assignable on resale by the first end user.

**What you must do to obtain limited warranty service:** To obtain performance of any obligation under this warranty for failure during the applicable warranty period, you must deliver the defective product, to the nearest Authorized Dealer, along with proof-of-purchase (invoice/receipt). KisanKraft Limited, its manufacturers and its dealers reserve the right to inspect the claimed defective part(s) to determine if the malfunction is the result of a defect covered by this warranty. Please note that the decision of KisanKraft Limited with respect to any warranty claim is final.

**After-sales Service (Including Warranty):** KisanKraft Limited does not sell directly to consumers. All sales or supplies are made through Authorized Dealers. It is the responsibility of the Authorized Dealer to provide all after-sales service to consumers. Any warranty claim should be raised by dealer to KisanKraft Limited as per warranty policy.

**Jurisdiction:** All disputes are subject to Bangalore court’s jurisdiction.

**Notes:**

- This purchase is not contingent upon a product demonstration. The purchaser shall satisfy himself with the product, including any product demonstration or verification of any function, before buying. KisanKraft Limited or its authorized dealers, including online sellers, shall not be liable to give any on-site demonstration after purchase of any of the product.
- Any product once used will not be taken back by KisanKraft Limited.
- Warranty and After Sale Services (including but not limited to installation, Demonstration, Repair, Routine Maintenance etc.), should be done through the Authorized Dealer selling this product.
- Dealers should have their own technician to provide After Sales Services to their Customers. KisanKraft Limited provides free training to Authorized Dealer’s technicians at KisanKraft Limited’s head office, on request from Authorized Dealer.

Product	<b>AGRICULTURAL ORCHARD SPRAYER</b>	KisanKraft Invoice Date	
Brand	<b>KisanKraft</b>	KisanKraft Invoice No.	
Model	<b>☐ KK-ABOS-0750</b>		
<b>WARRANTY PERIOD</b>	<b>6-MONTHS</b>	FOR THE SPECIFIED PERIOD FROM THE DATE OF SALE OR DELIVERY WHICHEVER IS EARLIER.	
Dealer's Invoice Date		Dealer's Invoice No.	
Buyer's Info (Name, Address, Phone, etc.):		Dealer's Stamp (Address, Phone, TIN, etc.):	
Buyer's Sign		Dealer's Sign	

**Warranty Policy**

**What is covered:** KisanKraft Limited and its manufacturers warrant this product to be free from defects in material or workmanship. All parts defective in material and workmanship are covered.

This warranty will only cover defects arising under normal usage.

This warranty is limited to repair or replacement by KisanKraft Limited or its manufacturers of such parts as appear to KisanKraft or its manufacturers, upon inspection, to be defective in material and/or workmanship. KisanKraft or its manufacturers make no warranty with respect to items not manufactured or sold by them. No onsite warranty is provided by KisanKraft Limited or its manufacturers. Defective items must be brought/sent to our Authorized Dealer or KisanKraft Limited’s office for service.

**What is not covered:** The *warranty shall become null and void* and neither KisanKraft Limited nor any of its manufacturers, nor its authorized dealers assumes any responsibility, if the failure was caused by the following:

- (1) Operation of product with incorrect fuel or lubricants, (2) Incorrect usage of machine or misuse, (3) Lack of maintenance, (4) Negligence, (5) Accident or physical damage, (6) Repairs made by unauthorized parties and/or with unauthorized parts, (7) Improper set up, adjustments, tampering or altered products (8) Any modification to the product what-so-ever.

**Important:** (1) Normal maintenance and adjustments to the product is the responsibility of the customer. (2) Normal wear and tear are not covered under warranty. (3) Rubber/plastic parts and consumables such as blades, clutch and clutch-bell, sparkplugs, nylon line, air-filters, fuel-filters, oil seals and gaskets etc. are not covered under the warranty. (4) Electrical Motor, Electrical Parts, Battery Etc. are not covered under the warranty.



Wide Range of Products for Every Need



# User Manual



## KisanKraft Limited

Sri Huchhanna Tower, #4, 1<sup>st</sup> Main, 7-A Cross, Maruthi Layout, Dasarahalli,  
HAF Post, Hebbal, Bangalore 560024, Karnataka, INDIA

- ◆ Bangalore (HO) ◆ Ahmedabad ◆ Bhopal ◆ Bhubaneswar ◆ Coimbatore ◆
- ◆ Guwahati ◆ Shimla ◆ Hubli ◆ Hyderabad ◆ Jaipur ◆
- ◆ Karnal ◆ Kolkata ◆ Lucknow ◆ Pune ◆ Raipur ◆

For more information give **MISSED CALL: 07676065555**



Many of our products have BIS: ISI certification.



**CONTENTS**

Chapter 1 Safety Warnings and Precautions for Use ..... 7

Chapter 2 Use of the product ..... 11

Chapter 3 Main structure, working principle and characteristics ..... 12

Exploded view of the diaphragm pump ..... 13

Chapter 4 Operating Instructions ..... 15

Chapter 5 Maintenance and Maintenance ..... 19

Chapter 6 Troubleshooting ..... 22

Chapter 7 Discharge of Chemical Liquid ..... 24

Chapter 8 Technical Specifications ..... 24

KisanKraft has a large range of products to serve the farmers. A list of our products is given below:

<p><b>Brush Cutters and Accessories</b></p> <ul style="list-style-type: none"> <li>Brush Cutter/Power Weeder</li> <li>Backpack Brush Cutter</li> <li>Tea Pruner</li> <li>Pole pruner with Engine</li> <li>Reaper Attachment</li> <li>Blades-Circular</li> <li>Blades (2 &amp; 3 points)</li> <li>Baffle</li> <li>Nylon Rope</li> <li>Tap &amp; Go</li> </ul> <p><b>Chainsaws</b></p> <ul style="list-style-type: none"> <li>Petrol Chainsaw</li> <li>Electric Chainsaw</li> <li>Chain Sharpening Machine</li> </ul> <p><b>Engines and Water Pumps</b></p> <ul style="list-style-type: none"> <li>Engine –Diesel-(Horizontal)</li> <li>Engine –Diesel-(Vertical)</li> <li>Engine-Kerosene</li> <li>Water Pump with Petrol Engine</li> <li>Water Pump with Kerosene Engine</li> <li>Water Pump with Diesel Engine</li> </ul> <p><b>Hand Tools</b></p> <ul style="list-style-type: none"> <li>Secateurs</li> <li>Folding Saw</li> <li>Garden Rake</li> <li>Garden Shovel</li> <li>Hedge Shear</li> <li>Lopper</li> <li>Telescopic Hedge Shear</li> <li>Telescopic Lopping Shear</li> <li>Tree Pruner</li> <li>Telescopic Steel Pipe &amp; Fruit Picker Bag</li> <li>Sheep Shear</li> </ul> <p><b>Garden Tools</b></p> <ul style="list-style-type: none"> <li>Electric Pressure Washer</li> <li>Hedge Trimmer</li> <li>Lawn Mower (Electric, Petrol &amp; Manual)</li> <li>Leaf Blower</li> </ul>	<p><b>Cultivators and Accessories</b></p> <ul style="list-style-type: none"> <li>Petrol and Diesel</li> </ul> <p><b>Sprayers and Accessories</b></p> <ul style="list-style-type: none"> <li>Battery Sprayer</li> <li>Portable Power Sprayer</li> <li>Trolley Sprayer</li> <li>Manual Knapsack Sprayer</li> <li>Manual Pressure Sprayer</li> <li>Rose Cans</li> <li>Hose Crimping Machine</li> <li>HTP Sprayer</li> <li>HTP Delivery Hose</li> <li>HTP Hose Reel</li> <li>HTP Stand</li> <li>HTP Gun / Lance( Brass Rod)</li> <li>Knapsack Power Sprayer</li> <li>Mister / Duster / Granules Spreader</li> <li>HTP Sprayer Set with Diesel Engine</li> <li>HTP Sprayer Set with Kerosene Engine</li> <li>Fogging Machine</li> </ul> <p><b>Milking Machine</b></p> <ul style="list-style-type: none"> <li>Wood Shredder</li> <li>Fodder Ensiling Chaff Cutter</li> <li>Fodder Grinder Chaff Cutter</li> <li>Fodder Mini Chaff Cutter</li> </ul> <p><b>Harvester</b></p> <ul style="list-style-type: none"> <li>Maize Sheller</li> <li>Maize Sheller + Dehusker</li> <li>Maize Combine Harvester</li> <li>Onion Digger Carlotta Italy</li> <li>Tea Leaf Harvester</li> <li>Sugarcane Combine Harvester</li> <li>Sugarcane Leaf Stripper</li> </ul> <p><b>Transplanter and Post Hole Digger</b></p> <ul style="list-style-type: none"> <li>Paddy Transplanter (2 &amp; 8 Rows)</li> <li>Transplanter-Vegetable &amp; Tobacco</li> <li>Post Hole Digger(4" to 14" Augers)</li> </ul>
---	---

**Chapter 7 Discharge of Chemical Liquid**

Install a discharge valve at the bottom of the medicine box to facilitate the discharge of residual liquid medicine. When handling pesticides, the safety instructions provided by the pesticide production plant should be followed, or the pesticides should be treated in accordance with national laws and regulations to prevent poisoning of people and crops.

**Chapter 8 Technical Specifications**

**KK-ABOS-0750**

<b>Required Power</b>	≥ 8.95 kW (12 hp)
<b>Chemical Tank</b>	750 L
<b>Spray Range</b>	≥ 20 m(h), ≥ 6 m(v)
<b>Nozzles</b>	10 pcs
<b>Pump Flowrate</b>	60 L/min
<b>Ventilation Fan</b>	600 mm
<b>Cylinders</b>	3 pcs
<b>Flush Tank</b>	100 L
<b>Net Weight</b>	340 Kgs
<b>Working Pressure</b>	25 bar

This warranty is null & void, if you fail to register the warranty with KisanKraft by sending the KisanKraft Copy with dealer's stamp. KisanKraft Limited

Product	<b>AGRICULTURAL ORCHARD SPRAYER</b>	KisanKraft Invoice Date	
Brand	<b>KisanKraft</b>	KisanKraft Invoice No.	
Model	<b>☐ KK-ABOS-0750</b>		
<b>WARRANTY PERIOD</b>	<b>6-MONTHS</b>	FOR THE SPECIFIED PERIOD FROM THE DATE OF SALE OR DELIVERY WHICHEVER IS EARLIER.	
Dealer's Invoice Date		Dealer's Invoice No.	
Buyer's Info (Name, Address, Phone, etc.):		Dealer's Stamp (Address, Phone, TIN, etc.):	
Buyer's Sign		Dealer's Sign	

**Warranty Policy**

**What is covered:** KisanKraft Limited and its manufacturers warrant this product to be free from defects in material or workmanship. All parts defective in material and workmanship are covered. This warranty will only cover defects arising under normal usage.

This warranty is limited to repair or replacement by KisanKraft Limited or its manufacturers of such parts as appear to KisanKraft or its manufacturers, upon inspection, to be defective in material and/or workmanship. KisanKraft or its manufacturers make no warranty with respect to items not manufactured or sold by them. No onsite warranty is provided by KisanKraft Limited or its manufacturers. Defective items must be brought/sent to our Authorized Dealer or KisanKraft Limited's office for service.

**What is not covered:** The warranty shall become null and void and neither KisanKraft Limited nor any of its manufacturers, nor its authorized dealers assumes any responsibility, if the failure was caused by the following:

- (1) Operation of product with incorrect fuel or lubricants, (2) Incorrect usage of machine or misuse, (3) Lack of maintenance, (4) Negligence, (5) Accident or physical damage, (6) Repairs made by unauthorized parties and/or with unauthorized parts, (7) Improper set up, adjustments, tampering or altered products (8) Any modification to the product what-so-ever.

**Important:** (1) Normal maintenance and adjustments to the product is the responsibility of the customer. (2) Normal wear and tear are not covered under warranty. (3) Rubber/plastic parts and consumables such as blades, clutch and clutch-bell, sparkplugs, nylon line, air-filters, fuel-filters, oil seals and gaskets etc. are not covered under the warranty. (4) Electrical Motor, Electrical Parts, Battery Etc. are not covered under the warranty.

This warranty is null & void, if you fail to register the warranty with KisanKraft by sending the KisanKraft Copy with dealer's stamp. KisanKraft Limited

**Incidental / Consequential Loss:** KisanKraft Limited or its manufacturers will not be liable for general damages, including bodily injuries, or for incidental or consequential damages including, but not limited to, loss of use, loss of profits, loss of production, expense of substitute equipment or other commercial loss or damage.

**Limitation of Liability:** This limited warranty is in lieu of all other express warranties, obligations, or liabilities. Any implied warranties, obligations or liabilities, including, but not limited to, any implied warranty of merchantability shall be limited in duration to the applicable warranty period. Any action for breach of any warranties hereunder, including, but not limited to, any implied warranty of merchantability must be brought within the applicable warranty period.

**Modifications of Warranty:** No agent, representative, dealer, or employee of KisanKraft Limited or any of its manufacturers has the authority to increase or alter the obligations of this warranty.

**Assignment / Transfer of warranty:** The warranty cannot be assigned and shall not transfer if the product is resold by the first buyer. The above warranties are extended to the first end user (original purchaser), and no warranty is made, nor authorized to be made assignable on resale by the first end user.

**What you must do to obtain limited warranty service:** To obtain performance of any obligation under this warranty for failure during the applicable warranty period, you must deliver the defective product, to the nearest Authorized Dealer, along with proof-of-purchase (invoice/receipt). KisanKraft Limited, its manufacturers and its dealers reserve the right to inspect the claimed defective part(s) to determine if the malfunction is the result of a defect covered by this warranty. Please note that the decision of KisanKraft Limited with respect to any warranty claim is final.

**After-sales Service (Including Warranty):** KisanKraft Limited does not sell directly to consumers. All sales or supplies are made through Authorized Dealers. It is the responsibility of the Authorized Dealer to provide all after-sales service to consumers. Any warranty claim should be raised by dealer to KisanKraft Limited as per warranty policy.

**Jurisdiction:** All disputes are subject to Bangalore court's jurisdiction.

**Notes:**

- This purchase is not contingent upon a product demonstration. The purchaser shall satisfy himself with the product, including any product demonstration or verification of any function, before buying. KisanKraft Limited or its authorized dealers, including online sellers, shall not be liable to give any on-site demonstration after purchase of any of the product.
- Any product once used will not be taken back by KisanKraft Limited.
- Warranty and After Sale Services (including but not limited to installation, Demonstration, Repair, Routine Maintenance etc.), should be done through the Authorized Dealer selling this product.
- Dealers should have their own technician to provide After Sales Services to their Customers. KisanKraft Limited provides free training to Authorized Dealer's technicians at KisanKraft Limited's head office, on request from Authorized Dealer.

**This warranty is null & void, if you fail to register the warranty with KisanKraft by sending the KisanKraft Copy with dealer's stamp. KisanKraft Limited**

	There is debris or wear between the regulator seat and the poppet valve	Pull the pressure relief handle repeatedly to flush out the debris. If it is invalid, check the pressure regulating valve and poppet valve, and replace them if they are worn.
	Improper speed	Cannot reach the specified speed
	Nozzle hole wear becomes larger	Replace the nozzle
Oil-water mixture (in milky white) appears in the oil cup, the oil consumption is too fast, and the oil cup overflows	Diaphragm rupture	replace

**This warranty is null & void, if you fail to register the warranty with KisanKraft by sending the KisanKraft Copy with dealer's stamp. KisanKraft Limited**

**Chapter 6 Troubleshooting**

Major failure	The reason	Elimination method
Can't suck the medicine Or insufficient displacement	Suction filter clogged	Open the filter, check and clean
	Suction pipe joint is loose or sealing gasket is damaged	Tighten the joint and replace the gasket
	Suction pipe rupture	Replace the new suction pipe
	The inlet and outlet valves are stuck or damaged by foreign objects	Clean foreign objects, replace with new inlet and outlet valves
	Diaphragm rupture	Replace
Vibration of the inlet and outlet pipes is severe	The inlet and outlet valves are stuck or damaged by foreign objects	Clean foreign objects, replace with new inlet and outlet valves
	Intake breath from water inlet	Clean foreign objects, replace with new inlet and outlet valves
	Intake breath from water inlet	Check the seal of the inlet pipe joint and whether the pipeline is damaged
Can't reach work pressure	The inlet and outlet valves are stuck or damaged by foreign objects	Clean foreign objects, replace with new inlet and outlet valves

**This warranty is null & void, if you fail to register the warranty with KisanKraft by sending the KisanKraft Copy with dealer's stamp. KisanKraft Limited**

**Foreword**

Thank you very much for using our products  
This manual details the safety precautions, technical parameters, driving operation, and maintenance methods of the machine. For your safety, please read and use this product correctly.  
In the process of using this product, if you encounter problems that cannot be solved, please contact our company in time.




**Chapter 1 Safety Warnings and Precautions for Use**

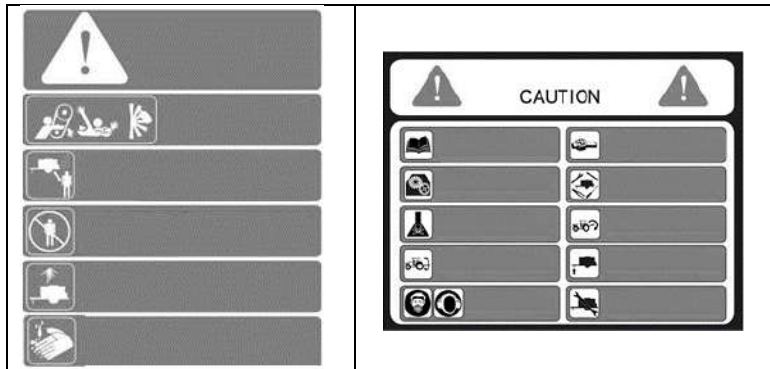
About the warning label of this product  
This product is accompanied by the following warning signs. The warning label specifically records the safety matters that need to be paid attention to. When using this product, you must follow the instructions on the label and do not do anything prohibited.

**This warranty is null & void, if you fail to register the warranty with KisanKraft by sending the KisanKraft Copy with dealer's stamp. KisanKraft Limited**

**Please read the warning label clearly**

- In order to facilitate understanding of the contents of the warning label, please keep the label clean.
- If the warning label is damaged, missing or unclear, please contact the dealer or the manufacturer for replacement

Pattern	Meaning
	Warn the operator to use safety protective equipment
	Inspection tips for each part of the studio
	It is strictly forbidden to stand at the inlet/outlet of the fan



This warranty is null & void, if you fail to register the warranty with KisanKraft by sending the KisanKraft Copy with dealer's stamp. KisanKraft Limited

**Fueling list**

Project	Supply (replacement time)	Recommended label	capacity
Medicine pump oil	Daily inspection, insufficient supply Replace every 300 hours	CF/15W-40 Diesel Engine Oil	The specified position of the oil cup scale

This warranty is null & void, if you fail to register the warranty with KisanKraft by sending the KisanKraft Copy with dealer's stamp. KisanKraft Limited



label	Every time, pay attention, warning labels, etc. whether there is any damage to the dirt
nozzle	Every time, whether there is water leakage, whether the spray hole is worn

**Safety instructions**

To use this machine safely, you must pay attention to anti-virus, fire prevention and machine accidents. We must pay attention to it and raise our vigilance. Don't be careless, to ensure personal safety, should pay attention to the following safety matters:

1. The owner should read this product manual thoroughly before operation, and master the machine adjustment, inspection and use methods
2. The machine should be operated by 3-4 people in turn, alternating with each other, to avoid that one person is in the medicine mist for a long time and cannot breathe fresh air.
3. During the operation of the machine, the air inlet and outlet of the fan are forbidden to stand by, and do not aim at anyone to prevent danger.
4. When working in the field, you must wear a mask, you should bring a towel, soap, wash your face, wash your hands, gargle, and scrub the medicine.
5. If poisoning occurs, immediately send the patient to the hospital for treatment.
6. Machine engines use gasoline (diesel) as fuel, which is flammable and explosive, and should be fire-proof. It is strictly forbidden to ignite and smoke near the machine.
7. Tighten the oil cap after refueling. Wipe clean the fuel leaking area. Move the machine away from the refueling location and start.
8. It is forbidden to refuel when the machine is running.
9. Do not touch the rotating parts when operating the machine to avoid injury.
10. When operating the machine, do not touch the silencer and cylinder to avoid scalding and injury.
11. 11. Prompt start, rapid acceleration, sharp turn, and emergency stop are prohibited. It is easy to cause the operator to throw out or the vehicle slips or rolls over.
12. When leaning on the road, drive at low speed in the first gear to avoid accidents such as vehicle slippage and rollover.
13. 13. This machine uses belts and chains to drive, and the safety shield must be fixed firmly and checked frequently to ensure personal safety.
14. 14. When the machine is stored, put the fuel in the fuel tank clean, wipe the machine clean, the medicine box and spray bar clean the residue of the pharmaceutical industry, and store it in a ventilated place away from fireworks.

**This warranty is null & void, if you fail to register the warranty with KisanKraft by sending the KisanKraft Copy with dealer's stamp. KisanKraft Limited**

**This warranty is null & void, if you fail to register the warranty with KisanKraft by sending the KisanKraft Copy with dealer's stamp. KisanKraft Limited**

15. 15. When storing, it should be placed out of the reach of children to avoid accidents.
16. 16. It is forbidden to use special working fluids such as strong acids and alkalis; it is forbidden to work in the weather with level 2 or above wind.
17. 17. When handling pesticides, the safety instructions provided by pesticide manufacturers should be followed to prevent poisoning of people and crops.
18. 18. At the end of the work, the operator must wash all parts of the body and wash all kinds of wearing clothes.
19. 19. This machine is only used for spraying in the field. It is forbidden to use it outside the field and road driving is prohibited.
20. Users are not allowed to modify this machine without authorization, otherwise they will not be able to get the warranty service of the dealer and the company; if the user transforms this product and causes injury or loss to the person or property of the person or others, the dealer and the company will not be liable.
21. 21. It is forbidden to operate the machine by the following persons: mentally ill; persons with no knowledge of operation; drunken persons; minors or elderly; pregnant or lactating women; overworked persons who have not rested well; People who can't work properly.

**This warranty is null & void, if you fail to register the warranty with KisanKraft by sending the KisanKraft Copy with dealer's stamp. KisanKraft Limited**

**Chapter 5 Maintenance and Maintenance**

**Regular checklist**

**Note:**  
Failure to carry out inspection and maintenance in a timely manner is the cause of the accident. In order to maintain good condition, please refer to the table below for regular inspection and maintenance.

**Daily inspection**

- Check the screw tightness of each part
- Abnormal vibration, abnormal sound

Project	Operating frequency
Medicine pump oil	Every time or 8 hours, the engine oil is insufficient to add in time
Suction filter	Every time or 8 hours, please check the cleaning filter
Connect pipes	Every time or 8 hours, check whether it is firm
Water inlet and outlet valves	Check every 300 hours
Diaphragm	Open for inspection every 300 hours, replace if necessary
medicine chest	Are there any scratches such as collision, corrosion aging and cracking?
Tire	Each time, if there is insufficient, sufficient air volume should be required according to the tire requirements. Standard air pressure 400KPa
Frame and body	Monthly, whether there are cracks, deformation and corrosion, welding cracks

**This warranty is null & void, if you fail to register the warranty with KisanKraft by sending the KisanKraft Copy with dealer's stamp. KisanKraft Limited**

**5. Downtime****Warning**

Please park on a flat, hard and non-hazardous road.  
Do not park on sloped roads. In the last resort, the wheels must be fixed.

1. Shut down for a long time to check whether the water accumulated in the drug pump is drained. If not, please drain the water accumulated in the pump.
2. Turn off the water outlet switch and loosen the pressure regulating valve to prevent deformation of the pressure regulating spring.
3. Remove surface dirt, oil and dirt.
4. For long-term parking, it is necessary to drain the oil in the pump, and clean the oil cavity in the pump with kerosene or light diesel oil, and then fill up with the new specified label oil.
5. Store in a cool ventilated hangar to avoid being close to acids and alkalis.

**Chapter 2 Use of the product**

1. It is suitable for the prevention and disinfection of plant diseases and insect pests in medium and large orchards. Such as peach tree, apple tree, pear tree, citrus, etc.
2. This machine is not suitable for the use of insoluble powdered pesticides, otherwise it will easily cause machine nozzle clogging and accelerate machine wear.
3. It is strictly forbidden to use special working fluids such as strong acid and alkali

**This warranty is null & void, if you fail to register the warranty with KisanKraft by sending the KisanKraft Copy with dealer's stamp. KisanKraft Limited**

**This warranty is null & void, if you fail to register the warranty with KisanKraft by sending the KisanKraft Copy with dealer's stamp. KisanKraft Limited**

**Chapter 3 Main structure, working principle and characteristics**

**The main structure**



- 1. Fan ----- Delivery of liquid medicine
- 2. Spray head ----- Atomized liquid
- 3. Tower plate----- Provide strong wind power transmission and Control the wind direction
- 4. Medicine box ----- --- Medicine liquid storage container
- 5. Filter ----- Filter large particles of impurities to prevent clogging of the nozzle
- 6. Tires ----- Support the machine and drive the machine to walk
- 7. Distributor----- Control the output of medicine liquid
- 8. Pressure regulating valve ----- Regulating the working pressure
- 9. Safety valve ----- Prevent excessive pressure
- 10. Transmission shaft----- Power connection device
- 11. Diaphragm pump ----- Provide pressure for liquid medicine
- 12. Engine oil cup ----- Check the oil position of the drug pump
- 13. Support legs ----- Support the entire machine
- 14. Dosing device ----- Switch control, automatic adding of liquid

1. When spraying in normal work, always check the spraying condition and working pressure. If there is any bad condition, stop and check in time.
2. After spraying, reduce the working pressure, add fresh water to the medicine box, turn on the machine for a few minutes to remove the remaining liquid, and then run the dehydration for a few minutes to drain off the remaining water in the pump, especially in winter to prevent the pump from freezing.
3. Replacing the liquid medicine: A discharge valve is installed at the bottom of the medicine box to drain out the remaining medicine liquid, add fresh water and run the medicine pump, clean the remaining medicine liquid in the medicine tank pipe, and add the required medicine liquid again. When handling pesticides, the safety instructions provided by pesticide manufacturers should be followed.
4. Nozzle adjustment: The machine is equipped with a single type of nozzle. Before spraying, check the spray angle of the nozzle. The angle of the nozzle can be adjusted as needed and the number of nozzles can be switched.
5. The walking speed of the traction head must be kept constant and the working pressure should be stable when walking and spraying drugs, so as to ensure the effect of spraying drugs and extend the service life of the drug pump.

**4. Operation of dosing device**

1. When adding the medicine solution, first turn off the water outlet switch of the medicine box and turn on the medicine addition switch.



**This warranty is null & void, if you fail to register the warranty with KisanKraft by sending the KisanKraft Copy with dealer's stamp. KisanKraft Limited**

**This warranty is null & void, if you fail to register the warranty with KisanKraft by sending the KisanKraft Copy with dealer's stamp. KisanKraft Limited**



## Warning

Do not approach people around you when towing.

When the transmission position rotates, it is strictly prohibited to approach.

When starting, you must confirm the surrounding safety, road conditions, and drive at a safe speed.

It is forbidden to start quickly, accelerate rapidly, or make sharp turns to avoid safety accidents such as rollovers.

On sloping roads, crossing and turning are prohibited, and low-speed first gear should be used for driving, otherwise it may easily cause overturning and other safety accidents.

Roads with unclear sight lines or narrow, inclined, undulating roads with poor environmental conditions should be safely checked before driving.

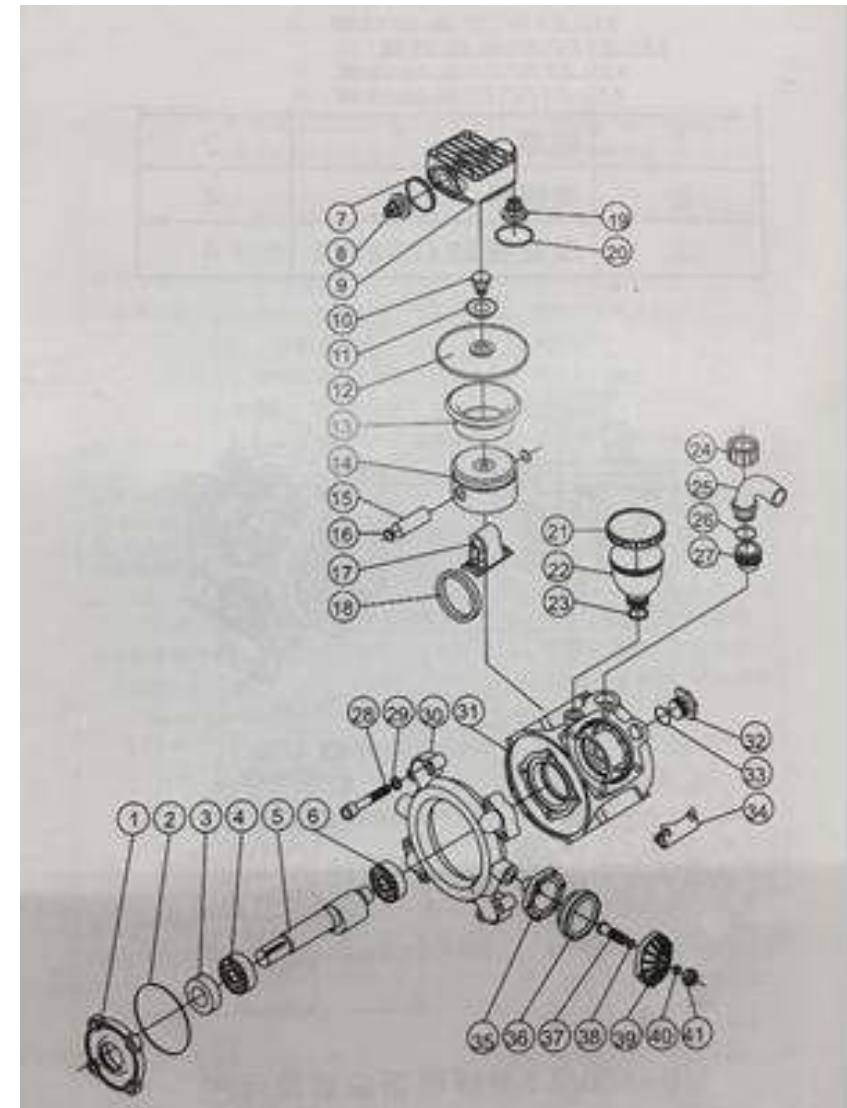
When walking, do not hang into neutral gear and taxi.

- ① Make sure that the spray control switch is turned on when starting.
- ② Confirm the safety distance of the machine front, back, left, and right.
- ③ The trailer is engaged in a low-speed walking gear, and the gear is output after being engaged at the same time.
- ④ Slowly loosen the clutch when you start, and drive at an even speed.
- ⑤ The drug pump starts to run, observe the working pressure, if you need to adjust the pressure, please cut off the output power and adjust it, then start the machine to check the pressure.
- ⑥ The drive is output after being cut off when turning to prevent damage to the drive.
- ⑦ Parking. The machine should be parked on a hard surface.

## Spray operation

**This warranty is null & void, if you fail to register the warranty with KisanKraft by sending the KisanKraft Copy with dealer's stamp. KisanKraft Limited**

## Exploded view of the diaphragm pump



**This warranty is null & void, if you fail to register the warranty with KisanKraft by sending the KisanKraft Copy with dealer's stamp. KisanKraft Limited**

## Chapter 4 Operating Instructions

### Working principle and characteristics

The power of this machine adopts the tractor head, and the water pump adopts the diaphragm pump. Use the rotary power generated by the tractor head to pass through the diaphragm pump, transmission shaft, and gearbox and fan in turn. The diaphragm pump produces high-pressure water, which emits high-pressure water mist through the spray. The power is transmitted to the gearbox to drive the fan, and the fan rotates at high speed to produce high-pressure wind to transport water mist.

The machine has the following characteristics:

1. Strong power, long spray distance, suitable for 3-8 meters orchard row distance.
2. The medicine box has large capacity, high operation efficiency and good atomization effect.
3. The medicine cabinet is resistant to corrosion and aging.

Check before starting. (Australia regular checklist) 1. Fastener inspection. Check all fasteners before starting. Especially load-bearing tires, diaphragm pumps, pressure-bearing fittings and other components. No looseness or breakage is allowed. 2. Oil quantity check. Check the oil quantity of the diaphragm pump through the oil cup, and add to the scalar quantity as required when it is missing. 3. Tire inspection Check whether the air volume of the tire is sufficient, if it is insufficient, the air volume should be sufficient according to the tire requirements. The tire specifications are 10.0/80-12 and the standard pressure is 390KPa. 4. Check the transmission components. Check whether the transmission shaft is firmly fixed and whether the appearance is worn or damaged. If damaged, it should be replaced in time.



### Warning

Keep away from fireworks when refueling

When refueling, be sure to stop

When refueling, please be careful not to exceed the maximum mark, and do not leak the oil to the outside. If there is any leakage, please wipe it off immediately.

- ① Open the oil cup cover and check the oil quantity. When insufficient, refuel in time.
- ② Open the oil cup lid and refuel.
- ③ Close the oil cup cover

### Start up

#### 1. Driving method

This warranty is null & void, if you fail to register the warranty with KisanKraft by sending the KisanKraft Copy with dealer's stamp. KisanKraft Limited

This warranty is null & void, if you fail to register the warranty with KisanKraft by sending the KisanKraft Copy with dealer's stamp. KisanKraft Limited