

KisanKraft® Warranty Certificate

(KISANKRAFT COPY)

Important: (1) Normal maintenance and adjustments to the product is the responsibility of the customer. (2) Normal wear and tear is not covered under warranty (3) Rubber/plastic parts and consumables such as blades, clutch and clutch-bell, spark-plugs, nylon line, air-filters, fuel-filters, oil seals etc. are not covered under the warranty.

No Warranty On Electrical Motor / Electrical Parts / Battery Etc.

Incidental / Consequential Loss: KisanKraft Limited or its manufacturers will not be liable for general damages, including bodily injuries, or for incidental or consequential damages including, but not limited to, loss of use, loss of profits, loss of production, expense of substitute equipment or other commercial loss or damage.

Limitation of Liability: This limited warranty is in lieu of all other express warranties, obligations, or liabilities. Any implied warranties, obligations or liabilities, including, but not limited to, any implied warranty of merchantability shall be limited in duration to the applicable warranty period. Any action for breach of any warranties hereunder, including, but not limited to, any implied warranty of merchantability must be brought within the applicable warranty period.

Modifications of Warranty: No agent, representative, dealer, or employee of KisanKraft Limited or any of its manufacturers has the authority to increase or alter the obligations of this warranty.

Assignment / Transfer of warranty: The warranty cannot be assigned and shall not transfer if the product is resold by the first buyer. The above warranties are extended to the first end user (original purchaser), and no warranty is made, nor authorized to be made assignable on resale by the first end user.

What you must do to obtain limited warranty service: To obtain performance of any obligation under this warranty for failure during the applicable warranty period, deliver the defective product, to the nearest Authorized Dealer. KisanKraft Limited, its manufacturers and its dealers reserve the right to inspect the claimed defective part(s) to determine if the malfunction is the result of a defect covered by this warranty. Please note that the decision of KisanKraft Limited with respect to any warranty claim is final.

Receipt is required for availing warranty services

Jurisdiction: All disputes are subject to Bangalore court's jurisdiction.

Our Products	<ul style="list-style-type: none"> ◆Chainsaws◆Brush Cutters and Accessories◆Harvesters◆ ◆Engines and Water Pumps◆Hand Tools◆Garden Tools◆ ◆Cultivators and Accessories◆Sprayers and Accessories◆ ◆Transplanter and Post Hole Digger ◆Milking Machines◆
---------------------	--

This warranty is null & void, if you fail to register the warranty with KisanKraft by sending the KisanKraft Copy with dealer's stamp.

KisanKraft Limited (formerly known as KisanKraft Machine Tools P Ltd)

🌐: www.kisankraft.com ✉: info@kisankraft.com ☎: +91.80.22178200

KisanKraft® Warranty Certificate

(DEALER COPY)

Product	Agricultural HTP Sprayer	KisanKraft Invoice Date	
Brand	KisanKraft	KisanKraft Invoice No.	
Model	<input type="checkbox"/> KK-PSK-18 <input type="checkbox"/> KK-PSK-22 <input type="checkbox"/> KK-PSK-227 <input type="checkbox"/> KK-PSK-30 <input type="checkbox"/> KK-PSK-307		
WARRANTY PERIOD	6 MONTHS	FOR THE SPECIFIED PERIOD FROM THE DATE OF SALE OR DELIVERY WHICHEVER IS EARLIER.	
Dealer's Invoice Date		Dealer's Invoice No.	
Buyer's Info (Name, Address, Phone, etc.):		Dealer's Stamp (Address, Phone, TIN, etc.):	
Buyer's Sign		Dealer's Sign	

What is covered: KisanKraft Limited and its manufacturers warrant this product to be free from defects in material or workmanship. All parts defective in material and workmanship are covered.

This warranty will only cover defects arising under normal usage.

This warranty is limited to repair or replacement by KisanKraft Limited or its manufacturers at the premises of Authorized Dealers, of such parts as appear to KisanKraft or its manufacturers, upon inspection, to be defective in material and/or workmanship. KisanKraft or its manufacturers make no warranty with respect to trade accessories not manufactured or sold by them.

What is not covered: The warranty shall become null and void and neither KisanKraft Limited nor any of its manufacturers, nor its authorized dealers assumes any responsibility, if the failure was caused by the following:

- (1) Operation of product with incorrect fuel or lubricants,
- (2) Incorrect usage of machine or misuse,
- (3) Lack of maintenance,
- (4) Negligence,
- (5) Accident or physical damage,
- (6) Repairs made by unauthorized parties and/or with unauthorized parts,
- (7) Improper set up, adjustments, tampering or altered products

Note: The purchase is not contingent upon a product demonstration. The purchaser shall satisfy himself with the product, including any product demonstration or verification of any function, before buying. KisanKraft Limited or its authorized dealers, including online sellers, shall not be liable to give any on-site demonstration after purchase of any of the product

This warranty is null & void, if you fail to register the warranty with KisanKraft by sending the KisanKraft Copy with dealer's stamp.

KisanKraft Limited (formerly known as KisanKraft Machine Tools P Ltd)

🌐: www.kisankraft.com ✉: info@kisankraft.com ☎: +91.80. 22178200

Important: (1) Normal maintenance and adjustments to the product is the responsibility of the customer. (2) Normal wear and tear is not covered under warranty (3) Rubber/plastic parts and consumables such as blades, clutch and clutch-bell, spark-plugs, nylon line, air-filters, fuel-filters, oil seals etc. are not covered under the warranty.

No Warranty On Electrical Motor / Electrical Parts / Battery Etc.

Incidental / Consequential Loss: KisanKraft Limited or its manufacturers will not be liable for general damages, including bodily injuries, or for incidental or consequential damages including, but not limited to, loss of use, loss of profits, loss of production, expense of substitute equipment or other commercial loss or damage.

Limitation of Liability: This limited warranty is in lieu of all other express warranties, obligations, or liabilities. Any implied warranties, obligations or liabilities, including, but not limited to, any implied warranty of merchantability shall be limited in duration to the applicable warranty period. Any action for breach of any warranties hereunder, including, but not limited to, any implied warranty of merchantability must be brought within the applicable warranty period.

Modifications of Warranty: No agent, representative, dealer, or employee of KisanKraft Limited or any of its manufacturers has the authority to increase or alter the obligations of this warranty.

Assignment / Transfer of warranty: The warranty cannot be assigned and shall not transfer if the product is resold by the first buyer. The above warranties are extended to the first end user (original purchaser), and no warranty is made, nor authorized to be made assignable on resale by the first end user.

What you must do to obtain limited warranty service: To obtain performance of any obligation under this warranty for failure during the applicable warranty period, deliver the defective product, to the nearest Authorized Dealer. KisanKraft Limited, its manufacturers and its dealers reserve the right to inspect the claimed defective part(s) to determine if the malfunction is the result of a defect covered by this warranty. Please note that the decision of KisanKraft Limited with respect to any warranty claim is final.

Receipt is required for availing warranty services

Jurisdiction: All disputes are subject to Bangalore court's jurisdiction.

Our Products

- ◆Chainsaws◆Brush Cutters and Accessories◆Harvesters◆
- ◆Engines and Water Pumps◆Hand Tools◆Garden Tools◆
- ◆Cultivators and Accessories◆Sprayers and Accessories◆
- ◆Transplanter and Post Hole Digger◆Milking Machines◆

This warranty is null & void, if you fail to register the warranty with KisanKraft by sending the KisanKraft Copy with dealer's stamp.

KisanKraft Limited (formerly known as KisanKraft Machine Tools P Ltd)

🌐: www.kisankraft.com ✉: info@kisankraft.com ☎: +91.80. 22178200

Product	Agricultural HTP Sprayer	KisanKraft Invoice Date	
Brand	KisanKraft	KisanKraft Invoice No.	
Model	<input type="checkbox"/> KK-PSK-18 <input type="checkbox"/> KK-PSK-22 <input type="checkbox"/> KK-PSK-227 <input type="checkbox"/> KK-PSK-30 <input type="checkbox"/> KK-PSK-307		
WARRANTY PERIOD	6 MONTHS	FOR THE SPECIFIED PERIOD FROM THE DATE OF SALE OR DELIVERY WHICHEVER IS EARLIER.	
Dealer's Invoice Date		Dealer's Invoice No.	
Buyer's Info (Name, Address, Phone, etc.):		Dealer's Stamp (Address, Phone, TIN, etc.):	
Buyer's Sign		Dealer's Sign	

What is covered: KisanKraft Limited and its manufacturers warrant this product to be free from defects in material or workmanship. All parts defective in material and workmanship are covered.

This warranty will only cover defects arising under normal usage.

This warranty is limited to repair or replacement by KisanKraft Limited or its manufacturers at the premises of Authorized Dealers, of such parts as appear to KisanKraft or its manufacturers, upon inspection, to be defective in material and/or workmanship. KisanKraft or its manufacturers make no warranty with respect to trade accessories not manufactured or sold by them.

What is not covered: The warranty shall become null and void and neither KisanKraft Limited nor any of its manufacturers, nor its authorized dealers assumes any responsibility, if the failure was caused by the following:

- (1) Operation of product with incorrect fuel or lubricants, (2) Incorrect usage of machine or misuse, (3) Lack of maintenance, (4) Negligence, (5) Accident or physical damage, (6) Repairs made by unauthorized parties and/or with unauthorized parts, (7) Improper set up, adjustments, tampering or altered products

Note: The purchase is not contingent upon a product demonstration. The purchaser shall satisfy himself with the product, including any product demonstration or verification of any function, before buying. KisanKraft Limited or its authorized dealers, including online sellers, shall not be liable to give any on-site demonstration after purchase of any of the product

This warranty is null & void, if you fail to register the warranty with KisanKraft by sending the KisanKraft Copy with dealer's stamp.

KisanKraft Limited (formerly known as KisanKraft Machine Tools P Ltd)

🌐: www.kisankraft.com ✉: info@kisankraft.com ☎: +91.80. 22178200

Wide Range of Products for Every Need



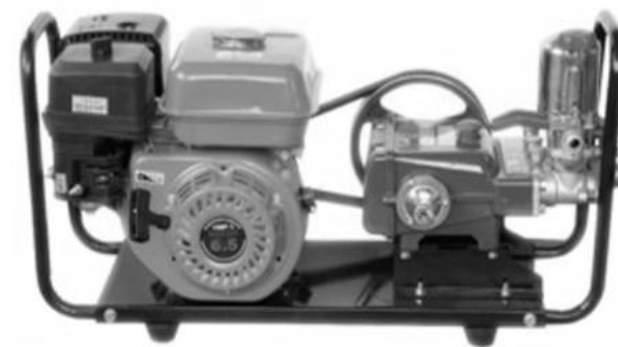
For more information give **MISSED CALL: 07676065555**



Many of our products have BIS: ISI certification.



User Manual



KisanKraft Limited

(Formerly known as KisanKraft Machine Tools Pvt. Ltd)

Sri Huchhanna Tower, #4, 1st Main, 7-A Cross, Maruthi Layout, Dasarahalli,
HAF Post, Hebbal, Bangalore - 560024, Karnataka, INDIA

- ♦ Bangalore (HO) ♦ Ahmedabad ♦ Bhopal ♦ Bhubaneswar ♦ Coimbatore ♦
- ♦ Jammu ♦ Guwahati ♦ Patna ♦ Hinudpur ♦ Hubli ♦ Hyderabad ♦
- ♦ Jaipur ♦ Karnal ♦ Kolkata ♦ Lucknow ♦ Pune ♦ Raipur ♦ Shimla ♦

CONTENTS

BEFORE GETTING STARTED	7
SAFETY INSTRUCTIONS	7
PUMP DIAGRAMS	8
OPERATING INSTRUCTIONS	9
PUMP LUBRICATION	9
TROUBLE SHOOTING.....	10
MAINTENANCE AND STORAGE	10
TECHNICAL SPECIFICATIONS	11
DIAGRAM - POWER SPRAYER	13
POWER SPRAYER-PARTS LIST.....	14
USER MANUAL-KEROSENE ENGINE	16

KisanKraft has a large range of products to serve the farmers. A list of our products is given below:

Brush Cutters and Accessories Brush Cutter/Power Weeder Backpack Brush Cutter Tea Pruner Pole pruner with Engine Reaper Attachment Blades-Circular Blades (2 & 3 points) Baffle Nylon Rope Tap & Go Chainsaws Petrol Chainsaw Electric Chainsaw Chain Sharpening Machine Engines and Water Pumps Engine –Diesel-(Horizontal) Engine –Diesel(Vertical) Engine-Kerosene Water Pump with Petrol Engine Water Pump with Kerosene Engine Water Pump with Diesel Engine Hand Tools Secateurs Folding Saw Garden Rake Garden Shovel Hedge Shear Lopper Telescopic Hedge Shear Telescopic Lopping Shear Tree Pruner Telescopic Steel Pipe & Fruit Picker Bag Sheep Shear Garden Tools Electric Pressure Washer Hedge Trimmer Lawn Mower (Electric, Petrol & Manual) Leaf Blower	Cultivators and Accessories Petrol and Diesel Sprayers and Accessories Battery Sprayer Portable Power Sprayer Trolley Sprayer Manual Knapsack Sprayer Manual Pressure Sprayer Rose Cans Hose Crimping Machine HTP Sprayer HTP Delivery Hose HTP Hose Reel HTP Stand HTP Gun / Lance(Brass Rod Knapsack Power Sprayer Mister / Duster / Granuel Spreader HTP Sprayer Set with Diesel Engine HTP Sprayer Set with Kerosene Engine Fogging Machine Milking Machine Wood Shredder Fodder Ensiling Chaff Cutter Fodder Grinder Chaff Cutter Fodder Mini Chaff Cutter Harvester Maize Sheller Maize Sheller + Dehusker Maize Combine Harvester Onion Digger Carlotti Italy Tea Leaf Harvester Sugarcane Combine Harvester Sugarcane Leaf Stripper Transplanter and Post Hole Digger Paddy Transplanter (2 & 8 Rows) Transplanter-Vegetable & Tobacco Post Hole Digger(4" to 14" Augers)
--	---

Sl. No	Part Name	Part No
1	Fuel tank Assembly.	12-1
1.1	Fuel tank cover Assembly.	12-1.1
1-1.1	Fuel tank cover	12-1.1.1
1-1.2	Rubber seal, Fuel tank cover 38x56x3	12-1.1.2
1.2	Fuel filter Assembly	12-1.2
1-2.1	Support, Fuel filter	12-1.2.1
1-2.2	Fuel filter	12-1.2.2
1.3	Fuel tank	12-1.3
1.4	Fuel joint Assembly	12-1.4
1-4.1	Nut M10	12-1.4.1
1-4.2	Fuel joint	12-1.4.2
2	Fuel tube 8.5x4.5	12-2
3	Clip Fuel tube	12-3
4	Bolt M6 x 28	12-4
5	Nut M6	12-5
6	Fuel joint	12-6
7	Bracket	12-7
8	Fuel tube 8.5x4.5	12-8

Product	Agricultural HTP Sprayer	KisanKraft Invoice Date	
Brand	KisanKraft	KisanKraft Invoice No.	
Model	<input type="checkbox"/> KK-PSK-18 <input type="checkbox"/> KK-PSK-22 <input type="checkbox"/> KK-PSK-227 <input type="checkbox"/> KK-PSK-30 <input type="checkbox"/> KK-PSK-307		
WARRANTY PERIOD	6 MONTHS	FOR THE SPECIFIED PERIOD FROM THE DATE OF SALE OR DELIVERY WHICHEVER IS EARLIER.	
Dealer's Invoice Date		Dealer's Invoice No.	
Buyer's Info (Name, Address, Phone, etc.):		Dealer's Stamp (Address, Phone, TIN, etc.):	
Buyer's Sign		Dealer's Sign	

What is covered: KisanKraft Limited and its manufacturers warrant this product to be free from defects in material or workmanship. All parts defective in material and workmanship are covered.

This warranty will only cover defects arising under normal usage.

This warranty is limited to repair or replacement by KisanKraft Limited or its manufacturers at the premises of Authorized Dealers, of such parts as appear to KisanKraft or its manufacturers, upon inspection, to be defective in material and/or workmanship. KisanKraft or its manufacturers make no warranty with respect to trade accessories not manufactured or sold by them.

What is not covered: The warranty shall become null and void and neither KisanKraft Limited nor any of its manufacturers, nor its authorized dealers assumes any responsibility, if the failure was caused by the following:

(1) Operation of product with incorrect fuel or lubricants, (2) Incorrect usage of machine or misuse, (3) Lack of maintenance, (4) Negligence, (5) Accident or physical damage, (6) Repairs made by unauthorized parties and/or with unauthorized parts, (7) Improper set up, adjustments, tampering or altered products

Note: The purchase is not contingent upon a product demonstration. The purchaser shall satisfy himself with the product, including any product demonstration or verification of any function, before buying. KisanKraft Limited or its authorized dealers, including online sellers, shall not be liable to give any on-site demonstration after purchase of any of the product

This warranty is null & void, if you fail to register the warranty with KisanKraft by sending the KisanKraft Copy with dealer's stamp.

KisanKraft Limited (formerly known as KisanKraft Machine Tools P Ltd)

KisanKraft® Warranty Certificate

(CUSTOMER COPY)

Important: (1) Normal maintenance and adjustments to the product is the responsibility of the customer. (2) Normal wear and tear is not covered under warranty. (3) Rubber/plastic parts and consumables such as blades, clutch and clutch-bell, spark-plugs, nylon line, air-filters, fuel-filters, oil seals etc. are not covered under the warranty.

No Warranty On Electrical Motor / Electrical Parts / Battery Etc.

Incidental / Consequential Loss: KisanKraft Limited or its manufacturers will not be liable for general damages, including bodily injuries, or for incidental or consequential damages including, but not limited to, loss of use, loss of profits, loss of production, expense of substitute equipment or other commercial loss or damage.

Limitation of Liability: This limited warranty is in lieu of all other express warranties, obligations, or liabilities. Any implied warranties, obligations or liabilities, including, but not limited to, any implied warranty of merchantability shall be limited in duration to the applicable warranty period. Any action for breach of any warranties hereunder, including, but not limited to, any implied warranty of merchantability must be brought within the applicable warranty period.

Modifications of Warranty: No agent, representative, dealer, or employee of KisanKraft Limited or any of its manufacturers has the authority to increase or alter the obligations of this warranty.

Assignment / Transfer of warranty: The warranty cannot be assigned and shall not transfer if the product is resold by the first buyer. The above warranties are extended to the first end user (original purchaser), and no warranty is made, nor authorized to be made assignable on resale by the first end user.

What you must do to obtain limited warranty service: To obtain performance of any obligation under this warranty for failure during the applicable warranty period, deliver the defective product, to the nearest Authorized Dealer. KisanKraft Limited, its manufacturers and its dealers reserve the right to inspect the claimed defective part(s) to determine if the malfunction is the result of a defect covered by this warranty. Please note that the decision of KisanKraft Limited with respect to any warranty claim is final.

Receipt is required for availing warranty services

Jurisdiction: All disputes are subject to Bangalore court's jurisdiction.

Our Products

- ◆Chainsaws◆Brush Cutters and Accessories◆Harvesters◆
- ◆Engines and Water Pumps◆Hand Tools◆Garden Tools◆
- ◆Cultivators and Accessories◆Sprayers and Accessories◆
- ◆Transplanter and Post Hole Digger ◆ Milking Machines ◆

This warranty is null & void, if you fail to register the warranty with KisanKraft by sending the KisanKraft Copy with dealer's stamp.

KisanKraft Limited (formerly known as KisanKraft Machine Tools P Ltd)

www.kisankraft.com

info@kisankraft.com

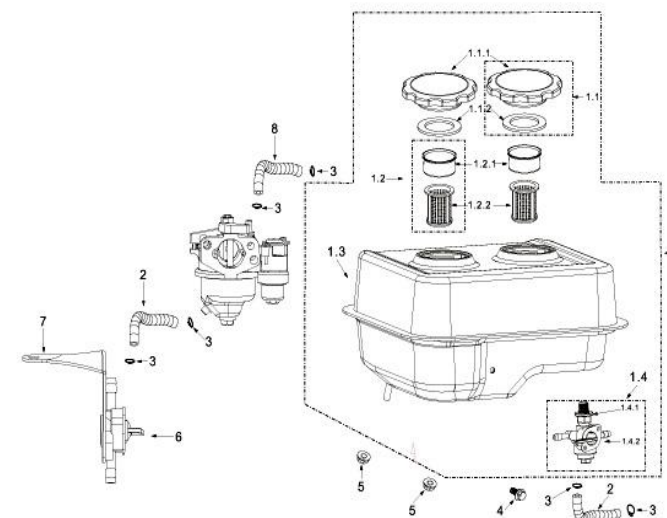
+91.80. 22178200

KisanKraft®

**Spark Ignition Internal
Combustion Piston Engines
for Agriculture
KK-GE-100 / 160 / 200**

Sl. No	Part Name	Part No
1	Muffler Assembly	11-1
1.1	Muffler body	11-1.1
1.2	Protector Muffler -A	11-1.2
1.3	Screw M5 x 8	11-1.3
1.4	Spring washer Φ5	11-1.4
1.5	Washer Φ 5	11-1.5
2	Washer Φ 8	11-2
3	Spring Φ 8	11-3
4	Nut M8	11-4
5	Gasket (Exhaust Part)	11-5

Fuel Tank-kerosene Engine



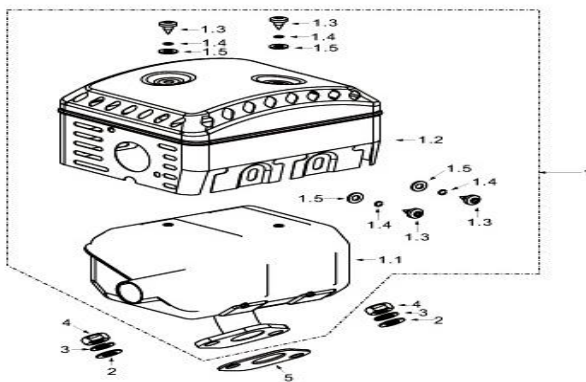
www.kisankraft.com

info@kisankraft.com

+91.80. 22178200

Sl. No	Part Name	Part No
1	Air Cleaner Assembly	10-1
1-1	Air Cleaner Seat Ass.	10-1.1
1-1.1	Air Cleaner seat	10-1.1.1
1-1.2	Seal Ring	10-1.1.2
1-1.3	Cover board	10-1.1.3
1-1.4	Screw M4 x 12	10-1.1.4
1-2	Filter Assembly	10-1.2
1-2.1	Foam Filter	10-1.2.1
1-2.2	Papery Filter	10-1.2.2
1-2.3	Rubber Fixer	10-1.2.3
1-2.4	Decal Washer	10-1.2.4
1.3	Filter Case	10-1.3
1.4	Butter Fly nut M6	10-1.4
1.5	Seal Ring 32x47x3	10-1.5
1.6	Air duck	10-1.6
2	Nut M6	10-2

Muffler Parts



BEFORE GETTING STARTED

Before using the machine for the first time be sure to read through this manual in order to avoid wrong operation. Please preserve this manual properly so that it can provide you with information whenever necessary.

SAFETY INSTRUCTIONS

- Using this machine with extra high pressure is prohibited ($\leq 35 \text{ kgf/cm}^2$);
- The rotary parts should have safety protective device;
- Protective Clothing:

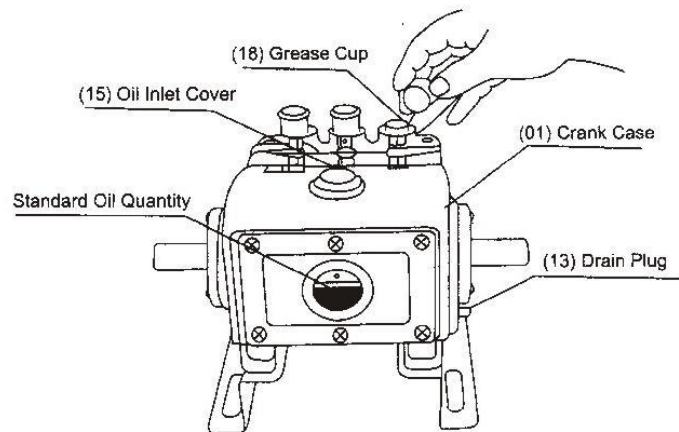
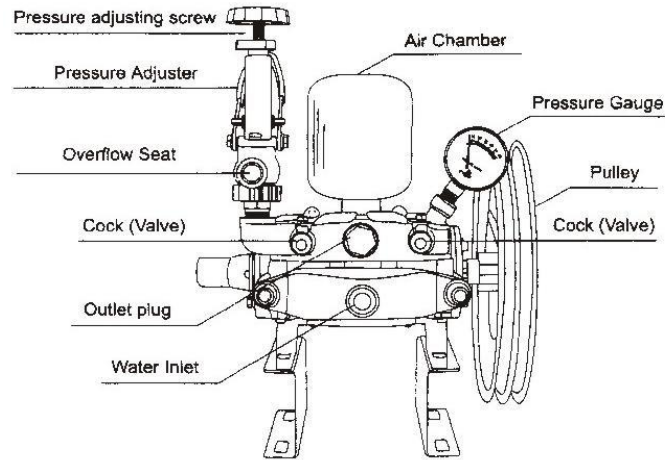
- Wear flange cap.
- Wear dirt/fog-proof glasses.
- Wear gauze mask.
- Wear long gloves.
- Wear coat guarding against poisons.
- Wear boots.



- Spraying towards personnel and working at the downwind position are prohibited;
- Running the machine without water or lubricating oil is prohibited;
- Using special working solutions as strong acid, strong alkali, etc. is prohibited
- Following personnel should not use the machine:
 - Mentally challenged.
 - Drunk.
 - Under the age of 18 or older people.
 - Person with no knowledge of the machine.
 - Tired person or patient and others who cannot operate the machine normally.
 - A person who has just exercised strenuously or has not slept enough. Women feeding breast milk to the baby or is pregnant.
- Spraying
 - It is fine to carry out an operation during cool weather with little wind. For example, early in the mornings or in the late afternoons as this can reduce the evaporation and drift of chemicals and improve the protective effect.
 - The operator should move windward.
 - If your mouth or eyes are spattered with chemicals, wash them with clean water and then visit a doctor.
 - If the operator has a headache or dizziness, should stop working at once and consult a doctor immediately.

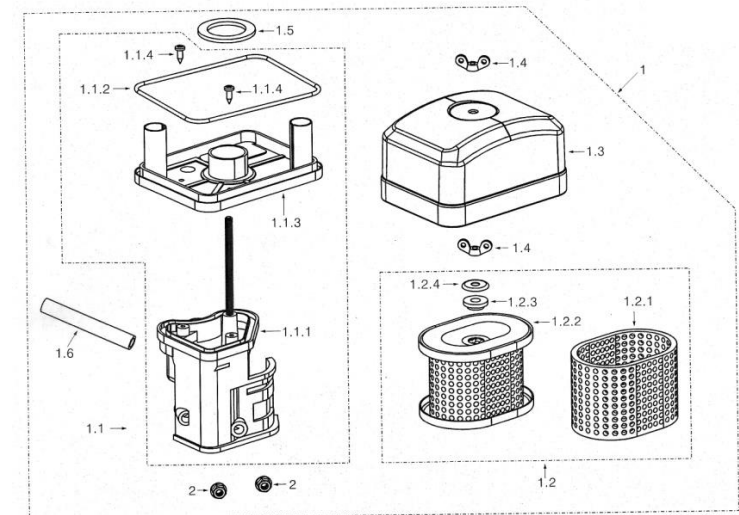
- For the operator's safety, misting/dusting must be carried out strictly according to the instruction of the chemicals and agricultural requirements.
- Spray over, according to pesticide manual to clean out any residual spray mixture in chemical tank.
- After spraying always wash your hands and face thoroughly

PUMP DIAGRAMS

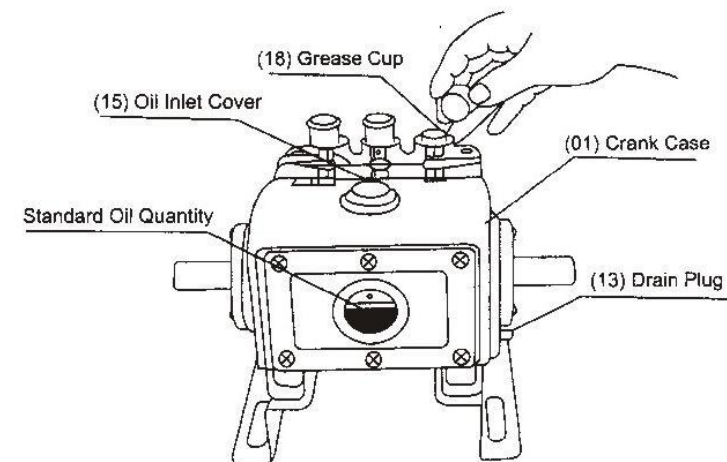


Sl. No	Part Name	Part No
1-22	Fuel Valve	9-1.22
1-23	Handle Bar	9-1.23
1-24	Spring Washer- big	9-1.24
1-25	Upper cover	9-1.25
1-26	Spring washer-small 3	9-1.26
1-27	Screw M3x7	9-1.27
2	Steel gasket	9-2
3	Gasket carburetor	9-3
4	Block Carburetor	9-4
5	Gasket, inlet port	9-5

Air Cleaner (Hemi -Dry type)



Sl. No	Part Name	Part No
1-3.2	Chock Valve axis	9-1.3.2
1-3.3	Chock Valve	9-1.3.3
1-4	Measure hole Assembly idle speed	9-1.4
1-4.1	Measure hole, idle speed	9-1.4.1
1-4.2	O-ring 4.7x1	9-1.4.2
1-5	Adjustment Screw Assembly mixture ratio	9-1.5
1-5.1	Adjustment screw, mixture ratio M4x12	9-1.5.1
1-5.2	Spring	9-1.5.2
1-6	Adjustment screw Idle speed	9-1.6
1-7	Fuel Floater	9-1.7
1-8	Pin Fuel Floater	9-1.8
1-9	Needle Valve Assembly	9-1.9
1-9.1	Needle Valve seat	9-9.1
1-9.2	Needle Valve	9-9.2
1-9.3	Spring, Needle valve	9-9.3
1-10	Main Jet	9-1.10
1-11	Main Measuring hole	9-1.11
1-12	Fuel inlet Tube	9-1.12
1-13	Rubber seal (Fuel cup)	9-1.13
1-14	Fuel cup	9-1.14
1-15	Fuel drain plug	9-1.15
1-16	Gasket fuel drain plug	9-1.16
1-17	Tighten bolt (Fuel cup)	9-1.17
1-18	O-ring 11x1.5	9-1.18
1-19	Hand grip chock valve Assembly	9-1.19
1-20	Sediment cup	9-1.20
1-21	O-ring 21x2	9-1.21



OPERATING INSTRUCTIONS

1. Check every fastener and make sure that the sprayer and the motor are installed firmly on the frame.
2. Set both the pulleys in a straight line and the belt in an appropriate tightness.
3. All joints of the hoses must be tightened to prevent any leakage.
4. Before starting the motor shut-off the cock (valve) Loosen the pressure adjusting screw and pull the pressure adjuster to the top.
5. Start the motor to power the sprayer. Keep a proper RPM. Press the pressure adjuster to the bottom.
6. Keep the pressure around 20-35 Kgs by adjusting the Pressure adjusting screw.
7. Open the cock (valve) to start spraying.
8. After the spraying is over, pull the pressure adjuster to the top and operate the sprayer with fresh water to clean out the remaining chemicals

PUMP LUBRICATION

1. Replace the lubricating oil, after the sprayer has been used for the first 10 hours. Next oil change should be after 40 hours. Afterwards oil should be changed every 70 hours.
2. Drain away the dirty oil by opening the drain plug.
3. After the drain plug is screwed back, remove the oil inlet cover and refill fresh SAE 20W-40 engine oil.
4. Keep the oil level at 2/3rd of the oil gauge.
5. Always fill the grease cups with grease. Screw on the grease cups, 2-3 cycles every 2 hours of spraying.

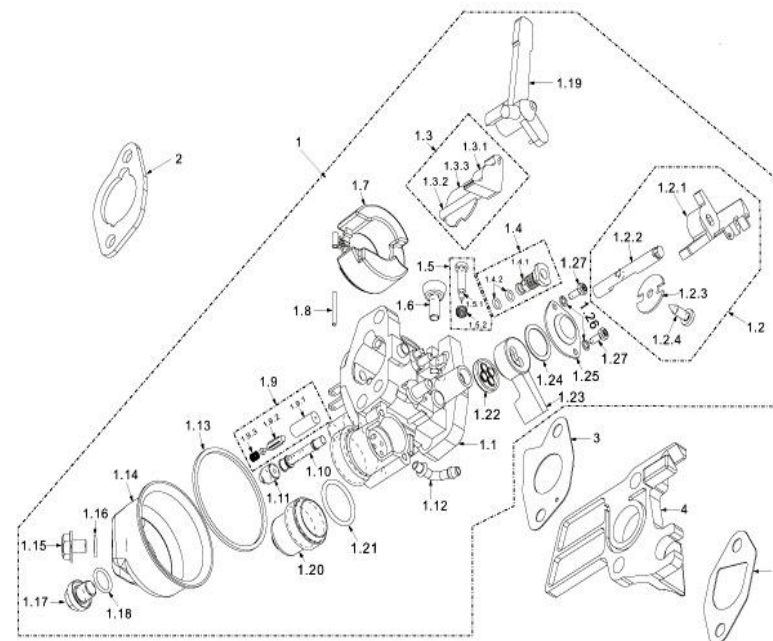
TROUBLE SHOOTING

Problem	Probable cause	Remedy
Feeding Failure & Pressure Instability	The suction hose is leaking or is blocked or struck	Clear the blockage and fix the leakage
	The valve assembly is damaged or struck.	Remove the suction chamber and the water outlet chamber, clean the valve assembly.
Pressure Insufficiency	Pressure screw is not adjusted properly	Adjust the pressure screw accordingly
	Check if the belt is loose	Tighten the belt
	The sprayer hose and the couplings are broken or damaged or loose	Repair or replace the sprayer hose and the coupling if necessary
Cylinder Leakage	Problem with the adjusting rings	Remove the gland cover and wind up the adjusting rings. If the problem is not fixed replace the v-packing in the cylinder

MAINTENANCE AND STORAGE

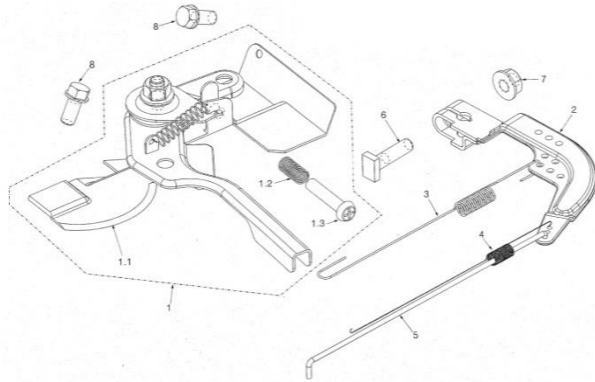
1. Replace the oil after first 40 hours, and afterwards replace it once in every 70 hours.
2. Each and every time once the work is finished operate it with clean water for 2~3 minutes to eliminate the residual chemical and keep all the parts clean.
3. For long term storage, clean and wipe the spraying machine dry and place it in a cool and dry place

Carburetor Parts



Sl. No	Part Name	Part No
1	Carburetor Assembly	9-1
1-1	Carburetor Body oil	9-1.1
1-2	Throttle Valve Assembly	9-1.2
1-2.1	Throttle Valve Cap	9-1.2.1
1-2.2	Throttle Valve axis	9-1.2.2
1-2.3	Throttle Valve	9-1.2.3
1-2.4	Screw M4x12	9-1.2.4
1-3	Chock Valve Assembly	9-1.3
1-3.1	Chock Valve cap	9-1.3.1

Speed Adjustment Base Parts



Sl. No	Part Name	Part No
1	Speed Adjustment base part	8-1
1-1	Speed Adjustment Base Ass.	8-1.1
1-2	Adjustment Spring	8-1.2
1-3	Adjustment Screw	8-1.3
2	Speed Adjustment arm	8-2
3	Return Spring	8-3
4	Fine Adjustment Spring	8-4
5	Pulling Rod	8-5
6	Quadrant bolt M6x21	8-6
7	Nut M6	8-7
8	Bolt M6 x 12	8-8

TECHNICAL SPECIFICATIONS

Model (Fully Assembled HTP Sprayers)	KK-PSK-18 (KK-18A3)	KK-PSK-22 /227 (KK-22C13)	KK-PSK-30/307 (KK-30C13)
HP	1.5 – 2	3	4.1
CC	97	160	196
Engine Type	4 - Stroke		
RPM/Out Put Pressure	3500 (Engine RPM)		
Fuel Used	Petrol start & Kerosene run		
Fuel Tank Capacity(Litre)	1.5	3.8	4
Oil (Mixing) (20W 40 Grade)	For HTP - 600 ml & For Engine - 350 ml	For HTP - 700 ml & For Engine - 550 ml	For HTP - 900 ml & For Engine - 550 ml
Consumption/Out Put Capacity	550ml/hour (Engine) & 1020 Litre/ hour (Output)	650ml/hour (Engine) & 1320 Litre/ hour (Output)	650ml/hour (Engine) & 2400 litre/hour(Output)

Fully Assembled HTP Sprayer sets with Kerosene Engines (4-Stroke)

Model	Engine	HTP
KK-PSK-18	KK-GE-100	KK-18A3
KK-PSK-22/227	KK-GE-160	KK-22C13
KK-PSK-30/307	KK-GE-200	KK-30C13

Note: The above sprayer models have the following:

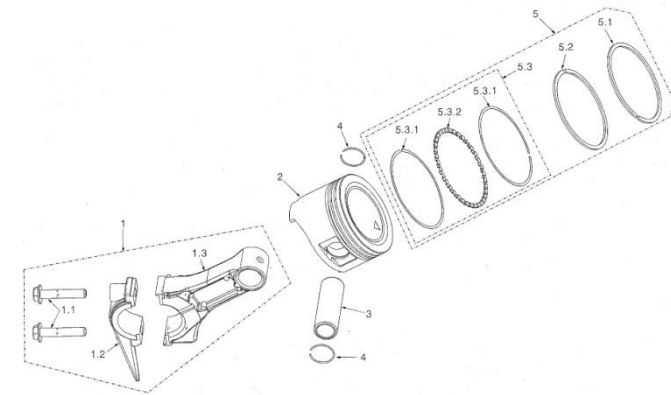
1.	Heavy Duty Stand	4.	2.5m Overflow hose
2.	50 m delivery hose	5.	2-Sprayer Guns
3.	2.5m Suction hose with strainer	6.	Tool-kit

Model(Cast Iron)	KK-18A3	KK-22CI3	KK-30CI3
Pump RPM	800 - 1200		
Suction Vol. (L/min)	10 – 18	13 - 22	30 - 40
Output Pressure (Kg/cm ²)	10 – 50		
Power (hp) (engine required)	1.5 – 2	3 – 5.5	3 – 6.5
Pump Oil (Mixing) in ml (20W 40 Grade)	450	250	450
Consumption / Output Capacity (Pump Output) in Litre/hour	540 - 1080	420 - 900	540 - 1080
Weight of the Machine (kg)	7	6.5	7

Note: The above sprayer models have the following:

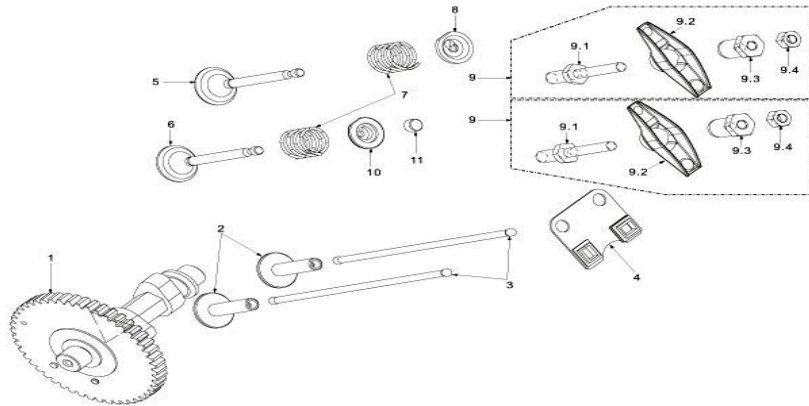
1.	Cast Iron head	5.	2.5m Suction hose
2.	SS Air Chamber	6.	2.5m Overflow hose
3.	Cast Aluminium Pulley	7.	Strainer kit
4.	Oil Pressure Gauge	8.	Tool-kit

Piston



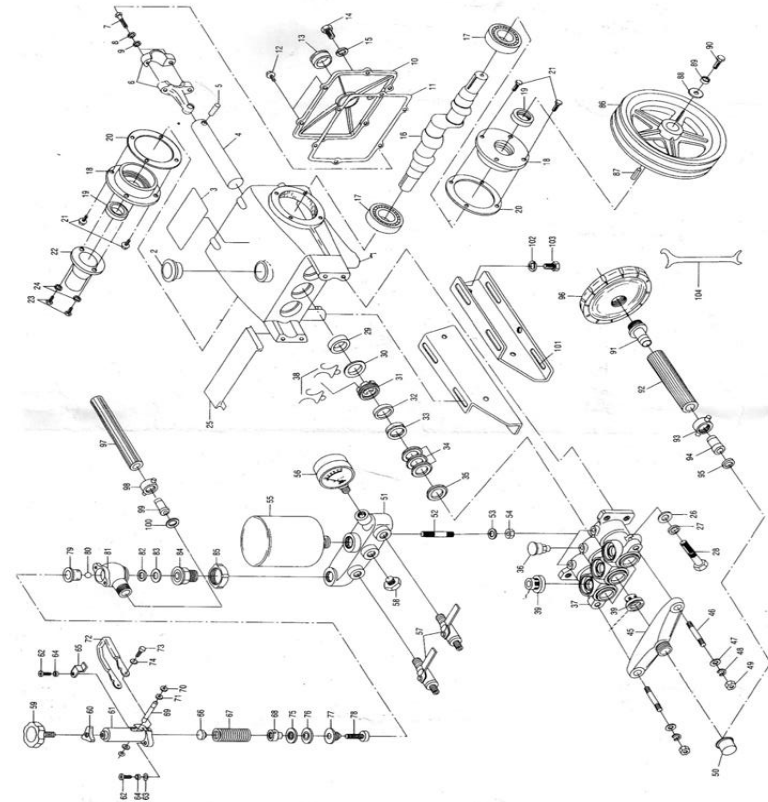
Sl. No	Part Name	Part No
1	Connecting rod Assembly	7-1
1-1	Bolt connecting rod M7x35	7-1.1
1-2	Cover, connecting rod	7-1.2
1-3	Body, connecting rod	7-1.3
2	Piston	7-2
3	Piston Pin	7-3
4	Clip Piston Pin	7-4
5	Piston Ring Assembly	7-5
5-1	First air ring	7-5.1
5-2	Second air ring	7-5.2
5-3	Oil ring Ass.	7-5.3
5-3.1	Scraper ring	7-5.3.1
5-3.2	Set off ring	7-5.3.2

Cam Shaft



Sl. No	Part Name	Part No
1	Cam Shaft Assembly	6-1
2	Tappet	6-2
3	Pusher	6-3
4	Pusher guide	6-4
5	Intake Valve	6-5
6	Exhaust Valve	6-6
7	Valve Spring	6-7
8	Spring seat Intake Valve	6-8
9	Rocker Ass.	6-9
9-1	Stud Rocker Assembly	6-9.1
9-2	Rocker	6-9.2
9-3	Adjust Nut Sphere	6-9.3
9-4	Lock Nut	6-9.4
10	Spring Seat Exhaust Valve	6-10
11	Cap Exhaust valve	6-11

DIAGRAM - POWER SPRAYER

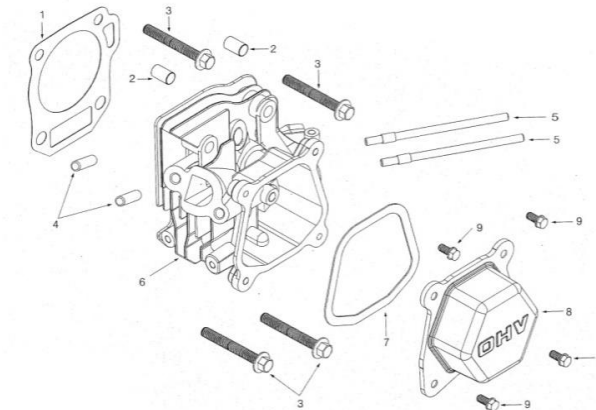


POWER SPRAYER-PARTS LIST

Part No	Part Name	Part No	Part Name
1.	Crank Case	54.	Hex Nut
2.	Oil Inlet Cover	55.	Air Chamber
3.	Name Plate	56.	Pressure Gauge
4.	Plunger	57.	Cock (valve)/Ball Cock
5.	Plunger Pin	58.	N/A
6.	Connecting Rod	59.	Pressure Adjusting Screw
7.	Bolt Connecting Rod	60.	Fly Nut
8.	Spring Washer	61.	Spring Box
9.	Plain Washer	62.	Cross Screw
10.	Crank Case cover	63.	Plain Washer
11.	Packing Cover	64.	Spring Washer
12.	Screw Cover	65.	Level
13.	Oil Gauge	66.	Upper Metal
14.	Drain Plug	67.	Regulation Spring
15.	Packing Drain Plug	68.	Spring Seat
16.	Crank Shaft	69.	Pin-Spring Box
17.	Ball Bearing	70.	E-Ring
18.	Case Ball Bearing	71.	Plain Washer
19.	Oil Seal, Crank Shaft	72.	Pressure Adjuster
20.	Packing Bearing Case (Only for 120A3)	73.	Hex Bolt
21.	Hex Bolt (Only for 120A3)	74.	Plain Washer
22.	Cover-Crank Shaft	75.	N/A
23.	Screw-Crank Cover	76.	N/A
24.	Plain Washer	77.	Box Oil Seal
25.	Gland Cover	78.	Spindle
26.	Plain Washer	79.	N/A
27.	Spring Washer	80.	Ball Valve / Steel Ball
28.	Stud Bolt	81.	Body Over Flow
29.	Plunger Oil Seal	82.	Valve Seat/ Steel Ball Seat
30.	Check Ring	83.	Packing Valve Seat
31.	Adjusting Ring	84.	N/A

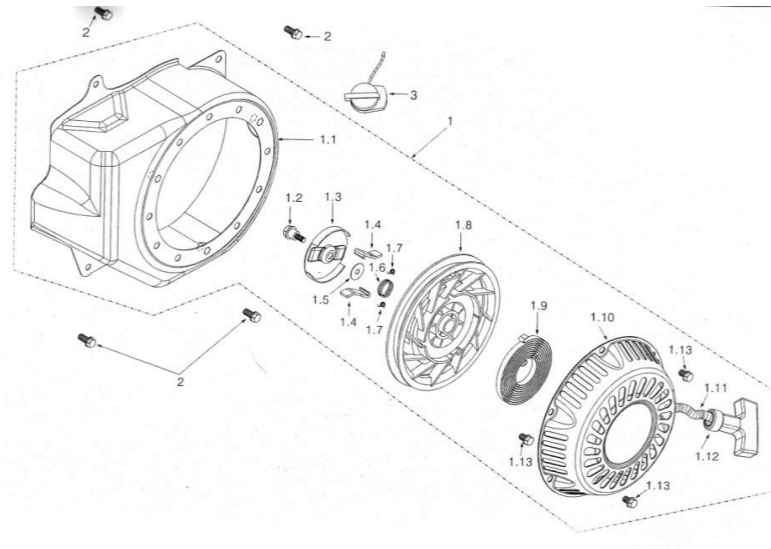
Sl. No	Part Name	Part No
1-12	Pulley handle	4-1.12
1-13	Bolt M6X8	4-1.13
2	Bolt M6x12	4-2
3	Engine switch	4-3

Cylinder Head



Sl. No	Part Name	Part No
1	Gasket Cylinder head	5-1
2	Set pin 10x14	5-2
3	Bolt M8 x 60, 22	5-3
4	Stud Exhaust M8 x 32	5-4
5	Stud Intake M6 x 113	5-5
6	Cylinder head Assembly	5-6
7	Gasket Cylinder head cover	5-7
8	Cylinder head cover	5-8
9	Bolt M6x12	5-9

Recoil Starter

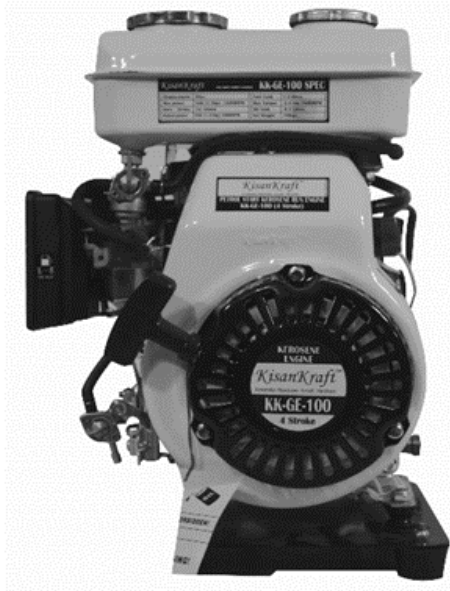


Sl. No	Part Name	Part No
1	Recoil Starter Assembly (Without fan Cover)	4-1
1-1	Fan cover	4-1.1
1-2	Pivot bolt M5 x 17	4-1.2
1-3	Ratchet guide	4-1.3
1-4	Ratchet	4-1.4
1-5	Washer - recoil 5x17x0.5	4-1.5
1-6	Friction Spoil 16x1	4-1.6
1-7	Ratchet Spring 5.5x0.2	4-1.7
1-8	Roller	4-1.8
1-9	Starter spring	4-1.9
1-10	Starter cover	4-1.10
1-11	Rope	4-1.11

Part No	Part Name	Part No	Part Name
32.	Grease Seal	85.	N/A
33.	Grease Ring	86.	V-Pulley
34.	V-Packing	87.	Key-V-Pulley
35.	V-Packing Seat	88.	Plain Washer
36.	Grease Cup	89.	Spring Washer
37.	Cylinder	90.	Hex Bolt
38.	Set Clip For Adjusting	91.	Strainer Joint
39.	Valve Assembly	92.	Suction Hose
40.	N/A	93.	Wing Nut, Suction
41.	Valve Spring	94.	Male Joint
42.	N/A	95.	Suction Packing
43.	Valve Seat	96.	Strainer Suction Assy
44.	Valve Seal	97.	Overflow Hose
45.	Suction Chamber	98.	Wing Nut, Over Flow
46.	Stud Bolt-Suction Chamber	99.	Male Joint
47.	Plain Washer	100.	Overflow Packing
48.	Spring Washer	101.	Bed, Crank Case
49.	Hex Nut	102.	Spring Washer
50.	Suction Cap	103.	Hex Bolt
51.	Water Outlet Chamber	104.	Adjusting Handle
52.	Stud Bolt-Outlet Chamber	105.	Partial Regulator
53.	Plain Washer	106.	

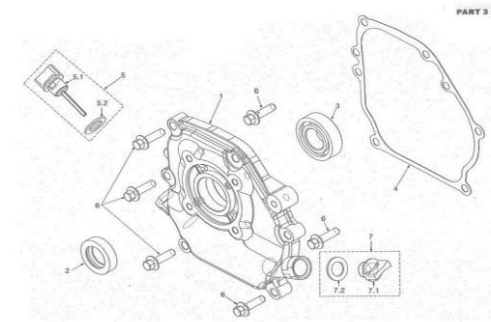
USER MANUAL-KEROSENE ENGINE

KK-GE-100 / 160 / 200



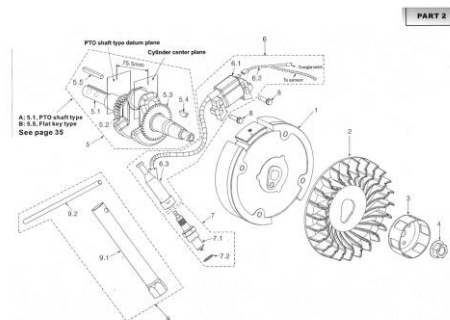
Sl. No	Part Name	Part No
8	Bolt 6 x 25	2-8
9	Tools	2-9
9.1	Wrench, Spark plug	2-9.1
9.2	Handle	2-9.2

Crankcase Cover Parts



Sl. No	Part Name	Part No
1	Crankcase cover	3-1
2	Oil Seal 25x41.25x6	3-2
3	Ball Bearing 6205	3-3
4	Gasket crankcase	3-4
5	oil gauge assembly	3-5
5-1	Oil Gauge	3-5.1
5-2	seal-oil gauge	3-5.2
6	Bolt M8 x 30	3-6
7	Oil Plug assembly	3-7
7-1	Oil plug	3-7.1
7-2	Seal Oil Plug	3-7.2

Crankshaft (Oil Sensor)



Sl. No	Part Name	Part No
1	Fly Wheel Assembly	2-1
2	Fly Wheel Fan	2-2
3	Starter Sleeve	2-3
4	Nut Fly wheel Assembly	2-4
5	Crankshaft Assembly.	2-5
5-1	Crank Shaft	2-5.1
5-2	Timing Gear	2-5.2
5-3	Governor Gear	2-5.3
5-4	Woodruff key	2-5.4
5-5	Flat Key	2-5.5
6	Ignition Coil Assembly	2-6
6-1	Ignition Coil	2-6.1
6-2	Stop lead	2-6.2
6-3	Spark Plug Cap	2-6.3
7	Spark Plug Assembly.	2-7
7-1	Spark plug	2-7.1
7-2	Washer, Spark Plug	2-7.2

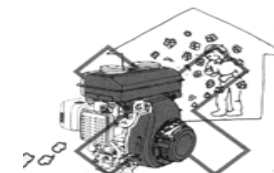
BEFORE GETTING STARTED

Thank you for your purchase and use of our products. In order to avoid accidents or injury, **please read this manual carefully** before using the machine. After reading, preserve it for further reference.

SAFETY INSTRUCTIONS

- Please do not use this engine inside an enclosed area. Ensure adequate ventilation while Engine is in operation.

CAUTION: Exhaust contains POISONOUS Carbon Mono Oxide gas



- To prevent fire hazard, please keep the Engine in operation at least 1-meter (3 feet) away from Combustible or Inflammable materials, buildings and equipment.



- When refueling you must STOP the Engine. Please do not smoke near Engine. Wipe the spilled fuel after refueling.

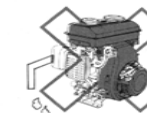
CAUTION: Spilled fuel is a fire hazard.



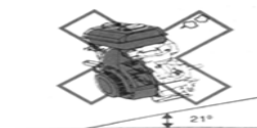
- Do NOT cover the Engine when in operation!



- Do NOT connect any pipe to exhaust muffler!



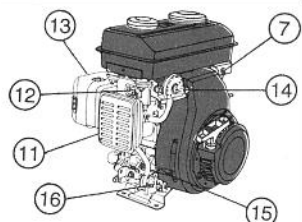
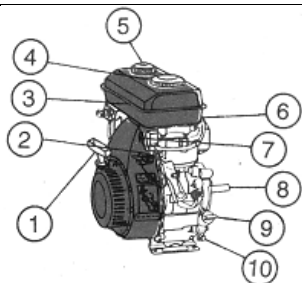
- Do NOT tilt the Engine more than 21 degrees.



ENGINE COMPONENTS

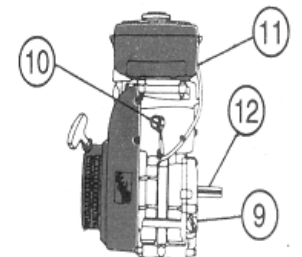
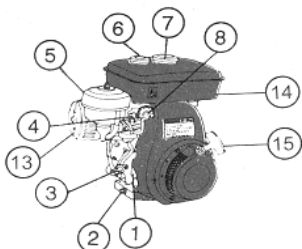
KK-GE-100/160

1. Recoil Starter
2. Engine Switch
3. Fuel Tank
4. Kerosene Tank Cap
5. Petrol Tank Cap
6. Spark Plug
7. Oil Alert Lamp
8. PTO Shaft
9. Engine Oil Filter Cap
10. Engine Oil Drain Bolt
11. Air Cleaner
12. Choke
13. Muffler
14. Fuel Cock
15. Throttle Weaver
16. Drain Cock



KK-GE-200

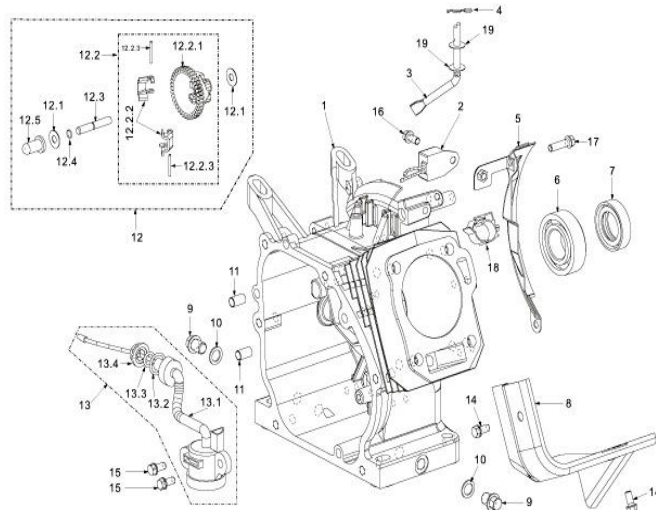
1. Throttle Lever
2. Engine Drain Bolt
3. Drain Cock
4. Choke Rod
5. Air Cleaner
6. Petrol Tank Cap
7. Kerosene Tank Cap
8. Fuel Cock
9. Engine Oil Filter Cap
10. Engine Switch
11. Spark Plug
12. P.T.O. Shaft
13. Muffler
14. Fuel Tank
15. Recoil Starter



Sl. No	Part Name	Part No
12	Centrifugal gear (set)	1-12
12-1	Washer, slip cap 6x15x0.5	1-12.1
12-2	Centrifugal gear Assembly	1-12.2
12-2-1	centrifugal gear	1-12.2.1
12-2-2	Centrifugal block	1-12.2.2
12-2-3	pin, centrifugal block	1-12.2.3
12-3	Centre axis	1-12.3
12-4	Clip centre axis	1-12.4
12-5	Slip cap	1-12.5
13	Oil sensor Assembly	1-13
13-1	Oil sensor Body	1-13.1
13-2	O-Ring 17 x 2	1-13.2
13-3	O-Ring 11 x 2	1-13.3
13-4	Nut M10	1-13.4
14	Bolt M6 x 10	1-14
15	Bolt M6 x 14	1-15
16	Bolt M6 x 12	1-16
17	Bolt M6 x 20	1-17
18	Rubber wire hoop	1-18
19	Washer Slip Cap 6x15x0.5	1-19

PARTS DIAGRAM & LIST-KK-GE-160/200

CRANKCASE



Sl. No	Part Name	Part No
1	Crankcase Body	1-1
2	Current Amplifier	1-2
3	Sway bar	1-3
4	Split Clip	1-4
5	Side Plate	1-5
6	Ball Bearing 6205	1-6
7	Oil seal 25x41.25x6	1-7
8	Wind guide	1-8
9	Drain bolt	1-9
10	Washer Drain bolt	1-10
11	Set pin 8x14	1-11

OPERATION

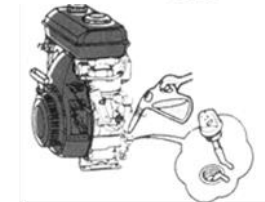
Pre-Operation Checks

Oil Level:

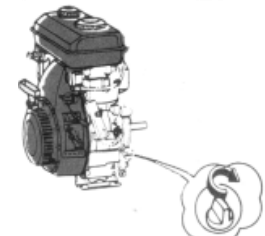
Please check the Engine Oil Level by putting the engine on a flat surface



If the oil level looks low, please check the Oil Level.
Add oil to the recommended level



Remember to tighten the Oil cap!



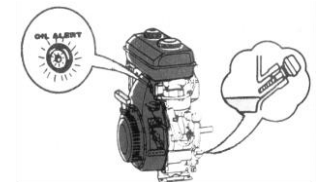
Recommended Engine Oil

If the OIL level in crankcase falls below a safe limit, then Oil Alert level system will automatically turn off the Engine.

NOTE: The Engine will not start if the Oil Alert Level System has turned off the Engine.

You will need to fill OIL to the recommended level, before you can restart the Engine.

SAE 10W-40 or SAE 20W-40
API Classification: SF Minimum



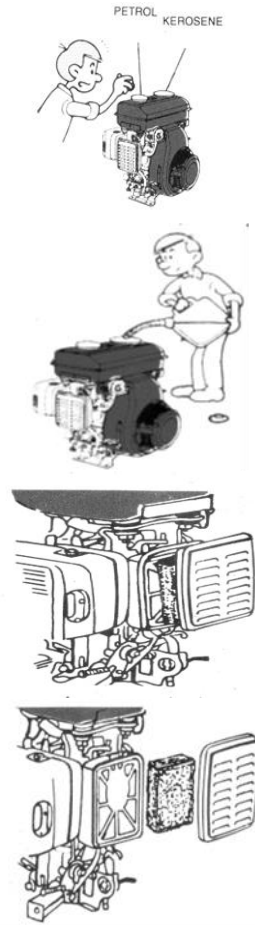
Fuel Level:

Check the fuel level before starting the Engine.

Add fuel, if the level is low
Fill fuel to the shoulder of fuel filter.

CAUTION:

- (1) Do not put Kerosene in Petrol tank, otherwise Engine will be very hard to start.
- (2) Do not put Petrol with Oil-mixed in it.
- (3) Do not put dirty, contaminated fuel



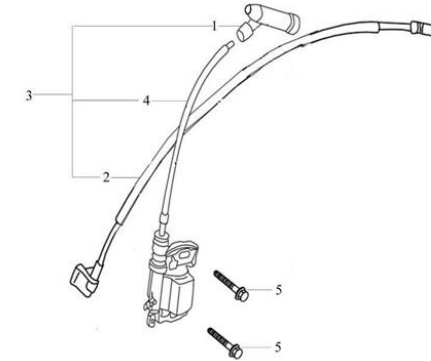
Air Filter:

Open Air-cleaner cover and remove the air cleaner element.

Check for dust/dirt in the air filter.
If it is dirty you should clean it as shown below.

4	12-4	Nut M12x1.25
---	------	--------------

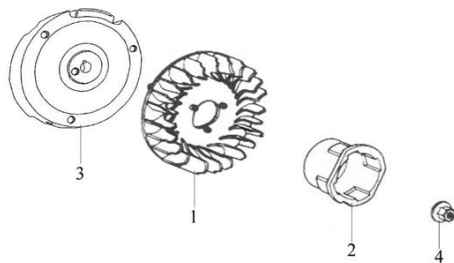
IGNITION COIL



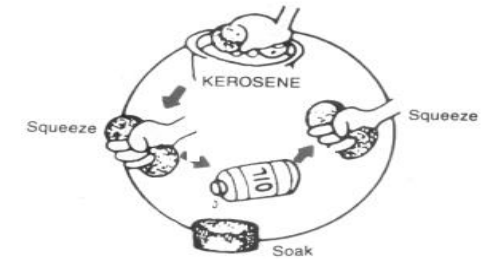
Sl. No.	Part No.	Description
1	13-1	Cap, spark plug
2	13-2	Cable, engine stop
3	13-3	Ignition coil sub-Assembly
4	13-4	Ignition coil
5	13-5	Bolt M6x25

SI No.	Part No.	Description
4	11-4	Return spring
5	11-5	Assistant spring, governor
6	11-6	Mount, governor
7	11-7	Handle
8	11-8	Positioning plate
9	11-9	Spring, governor
10	11-10	Wave washer
11	11-11	Washer
12	11-12	Supporting plate unit
13	11-13	Pressure plate
14	11-14	Nut M6
15	11-15	Bolt M5x25
16	11-16	Bolt M6x14
17	11-17	Bolt M5x16

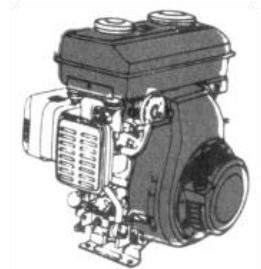
FLYWHEEL



SI No.	Part No.	Description
1	12-1	Fan, flywheel
2	12-2	Starter Sleeve /flange
3	12-3	Flywheel

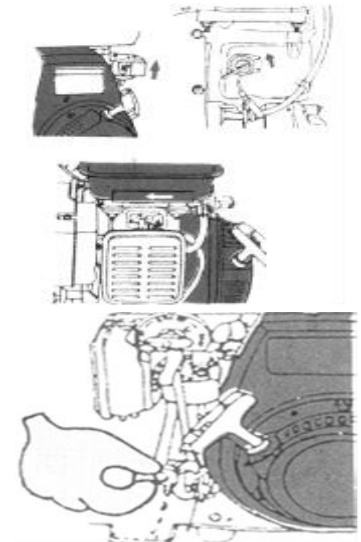


Clean air filter element and refit it in the Air-filter of the engine.

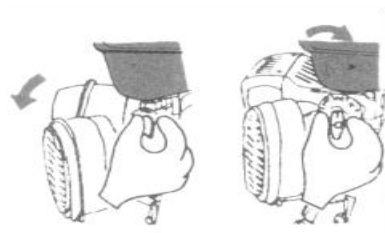


Starting the Engine (COLD START):

1. Turn the Engine switch to ON position
2. Put the choke in the shown position.
3. Turn the Drain Cock to ON position and drain the Kerosene from the carburetor.
4. Turn the Drain Cock to OFF position after you have drained the Kerosene.
5. Return the Kerosene to the Kerosene Tank.

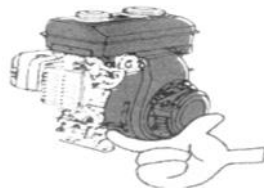


6. Turn the Fuel Cock to START / ON position



7. Increase the throttle (accelerator) level slightly

8. Make sure that there is no (minimum) load attached to the Engine

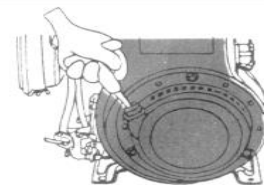


9. Pull the starter grip, until you feel the resistance

10. Then pull the rope fast

11. Do not leave the rope. Do not allow rope to snap back.

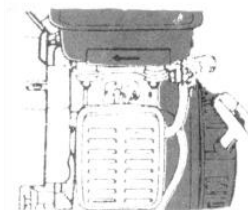
12. Return the rope slowly, by hand, to the recoil starter



13. Turn the fuel cock to RUN position.

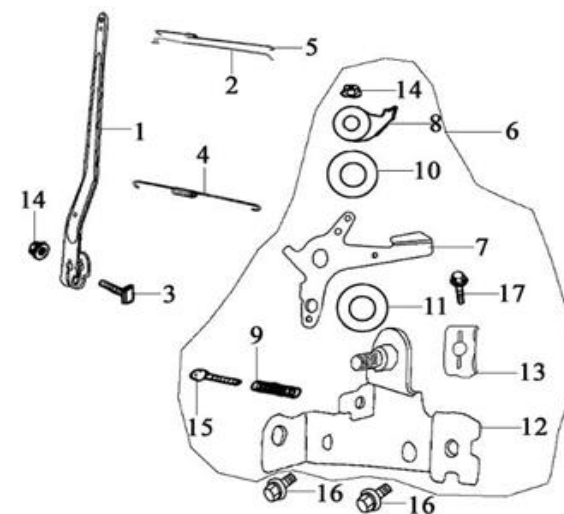


14. Close the choke as indicated on the Engine.



SI No.	Part No.	Description
9	10-9	Rope Reel
10	10-10	Starter Handle
11	10-11	Starter Cover
12	10-12	N/A
13	10-13	Engine switch
14	10-14	Bolt M6x10
15	10-15	Bolt M6x14
16	10-16	Ratchet Spring

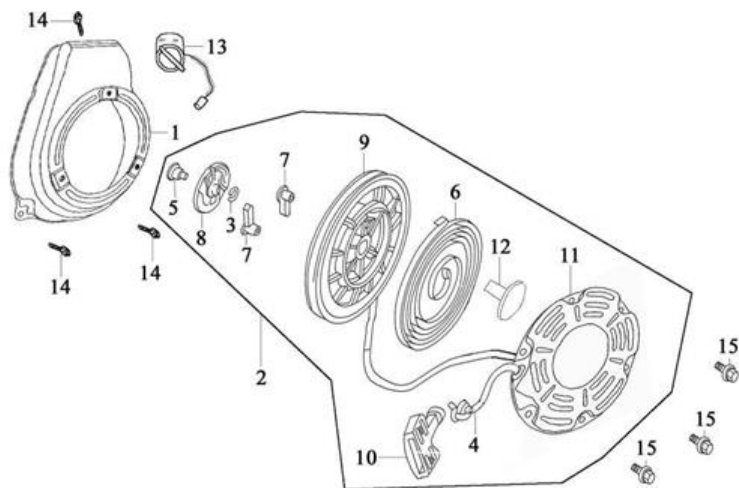
GOVERNING CONTROL SYSTEM



SI No.	Part No.	Description
1	11-1	Governor arm
2	11-2	Pull-rod, governor
3	11-3	Lock bolt

SI No.	Part No.	Description
1	9-1	Gasket, exhaust port
2	9-2	Exhaust muffler
3	9-3	Nut M6
4	9-4	Muffler Protector (Wire Net)

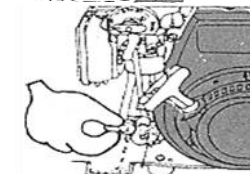
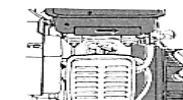
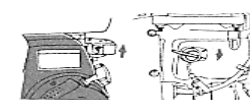
RECOIL STARTER



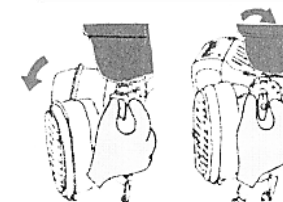
SI No.	Part No.	Description
1	10-1	Fan Cover
2	10-2	Recoil starter Assembly
3	10-3	Friction spring
4	10-4	Rope
5	10-5	Shoulder screw
6	10-6	Recoil Spring/Spiral spring
7	10-7	Ratchet
8	10-8	Guide Plate

Starting the Engine (HOT START):

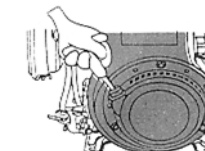
1. Turn the Engine switch to ON position
2. Close the choke as indicated on the Engine
3. Raise the throttle lever slightly
4. Make sure that there is no (minimum) load attached to the Engine.



5. Turn the Fuel Cock to RUN / ON position.



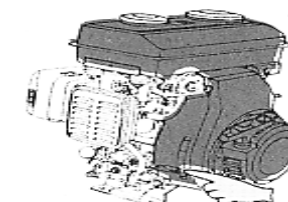
6. Pull the starter grip, until you feel the resistance
7. Then pull the rope fast.
8. Do not leave the rope. Do not allow the rope to snap back.



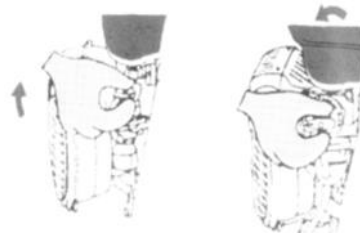
Return the rope slowly, by hand, to the recoil starter

Stopping the Engine:

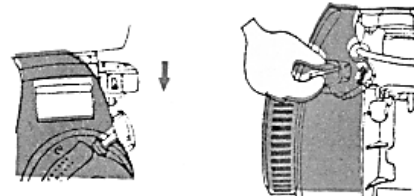
1. Move the throttle (accelerator) lever fully down.



- Turn the Fuel Cock to STOP / OFF position



- Turn the Engine switch to OFF position.



NOTE: In case of emergency, in order to stop the engine just turn the switch to OFF position.

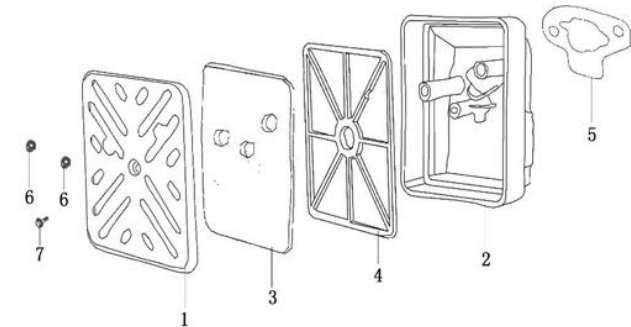
MAINTENANCE

Item \ Period	Before Each Use	First Month	Every 3-Months	Every 6-Months	1-Year	3-Years
Engine Oil	Check	Change		Change		
Air Cleaner	Check		Clean			
Spark Plug				Check, Clean, Readjust		
Muffler					Clean	
Cylinder Head					Clean	
Fuel Filter & Fuel Pipe					Clean	Change
Valves					Check, Readjust	

Important:

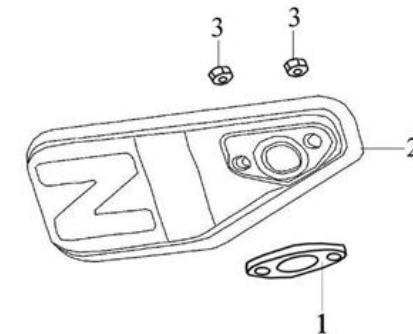
- Oil should be changed after first 20 hours of use. After that OIL should be changed every 100-hours of use.
- If you are in dusty environment, service more frequently
- Always use genuine spare parts and take it for servicing to authorized dealers.

AIR CLEANER ASSEMBLY



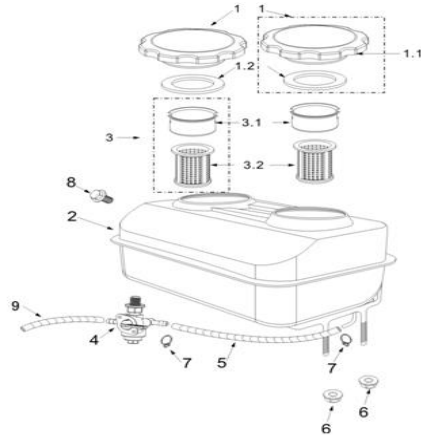
SI No.	Part No.	Description
1	8-1	Cover, air cleaner
2	8-2	Housing, air cleaner
3	8-3	Foam, air cleaner
4	8-4	Bracket, air cleaner
5	8-5	Gasket, air cleaner
6	8-6	Nut M5
7	8-7	Self-tapping screw ST4x10

MUFFLER



31	6-31	Nut M6
----	------	--------

FUEL TANK ASSEMBLY



Sl No.	Part No.	Description
1	7-1	Fuel filler cap sub-Assembly
1.1	7-1.1	Fuel filler cap
1.2	7-1.2	Packing ring
2	7-2	Fuel tank
3	7-3	Fuel Filter(Upper)
4	7-4	Fuel Cock
5	7-5	Fuel Tube 200mm
6	7-6	Nut M6
7	7-7	Pipe clamp
8	7-8	Bolt M4x6
9	7-9	Fuel Tube 130mm

Oil Change:

Remove Oil Filter cap

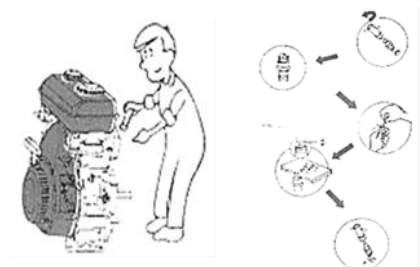
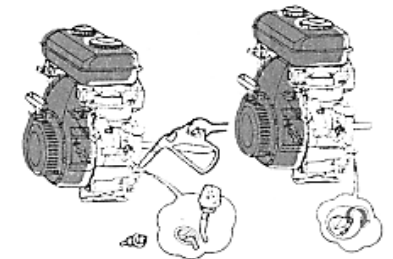
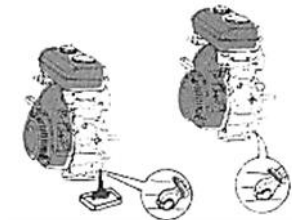
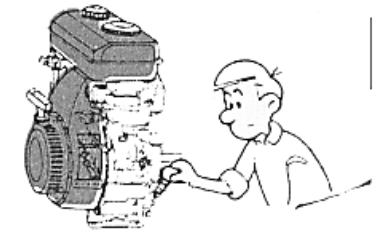
Remove the drain bolt, and drain the old oil.

1. Tighten the drain bolt.
2. Fill the new Recommended Oil to the maximum level (neck of the oil filler)
3. Tighten the Oil Filler cap.

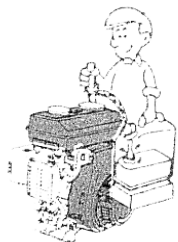
Spark Plug:

1. Remove the Spark Plug
2. Clean the carbon deposits
3. Measure the gap – it should be 0.6-0.7 mm
4. If necessary, replace the spark plug

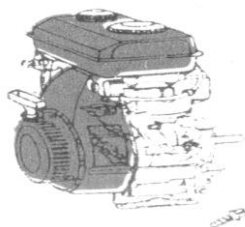
Note: Always use genuine spare parts only.



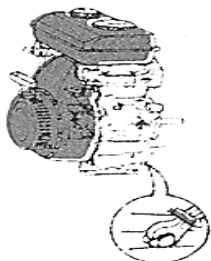
STORAGE



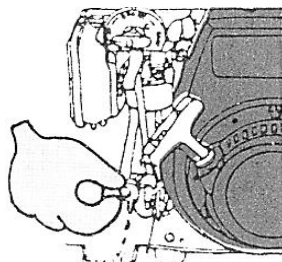
1. Drain the fuel from 2 fuel tanks



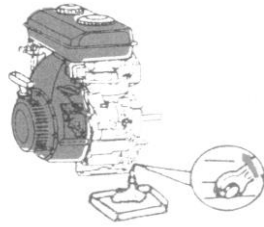
3. Remove the Oil Filter cap



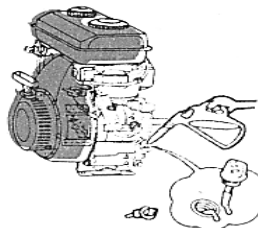
5. Close the oil drain bolt and tighten it



2. Drain fuel from Carburetor



4. Remove the drain bolt and drain the oil

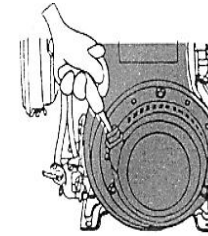
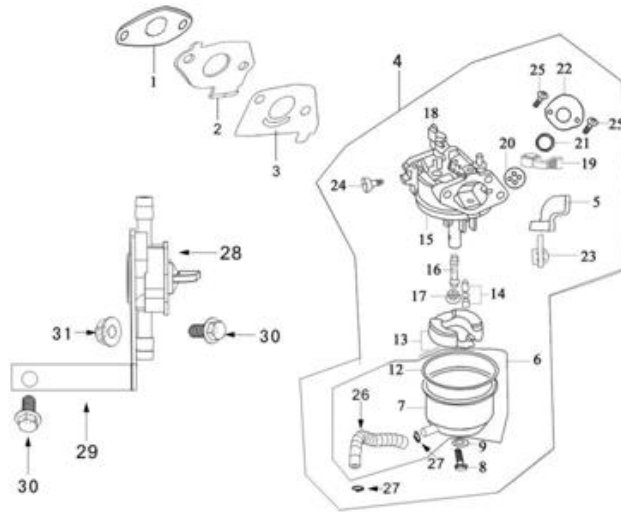


6. Fill new recommended oil to the max level

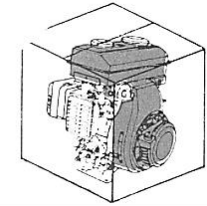
S/N	Part No.	Description
1	6-1	Gasket, intake port
2	6-2	Connecting block
3	6-3	Gasket, carburetor
4	6-4	Carburetor Assembly
5	6-5	Choke lever
6	6-6	Float chamber sub-Assembly
7	6-7	Float chamber
8	6-8	Screw
9	6-9	Seal, screw
12	6-12	Gasket, float chamber
13	6-13	Float sub-Assembly
14	6-14	Needle valve
15	6-15	Mixture chamber body
16	6-16	Main nozzle
17	6-17	Main jet
18	6-18	Throttle unit
19	6-19	Throttle lever
20	6-20	Airproof washer
21	6-21	Washer
22	6-22	Cover
24	6-24	Idle adjusting screw
25	6-25	Screw M4x6
26	6-26	Tubing
27	6-27	Pipe clamp
28	6-28	Oil switch
29	6-29	A mounting block
30	6-30	Bolt M6x14

Sl No.	Part No.	Description
1	5-1	Camshaft
2	5-2	Washer, camshaft
3	5-3	Tappet
4	5-4	Intake valve
5	5-5	Exhaust valve
6	5-6	Oil seal, valve stem
7	5-7	Spring seat, valve
8	5-8	Valve spring
9	5-9	Cap (Valve)

CARBURETOR ASSEMBLY



7. Pull the recoil starter slowly until resistance is left



8. Pack it in a closed box and store it.

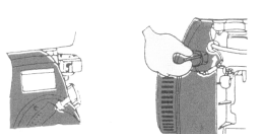
TECHNICAL SPECIFICATIONS

	KK-GE-100	KK-GE-200	KK-GE-160
Engine Type	4-Stroke, Air-cooled, 1-Cylinder, Side Valve		
Displacement	97 cc	197 cc	163 cc
Bore x Stroke	52 x 46 mm	67 x 56 mm	68 x 45 mm
Compression Ratio	4.8 : 1	4.5 : 1	6 : 1
Fuel	Petrol Start – Kerosene Run		
Max Power	1.8 HP @ 4200 RPM	3.6 HP @ 3600 – 4000 RPM	3.1 HP @ 3000 RPM
Rated Power	1.4 HP @ 3600 RPM	3.1 HP @ 3600 RPM	2.7 HP @ 2500 RPM
Max Torque	0.4 Kg.m./3000 RPM	0.8 Kg.m./2500 RPM	1.05 Kg.m./2500 RPM
Ignition System	Non-contact TCI		
Ignition Timing	20° BTDC		
Air Cleaner	Semi-dry, oil bath, dual, double silent and cyclone type		
Kerosene Tank	1.5 L	4 L	3.8 L
Petrol Tank	0.20 L	0.4 L	0.2 L
Lube Oil Tank	0.4 L	0.7 L	0.6 L
PTO Shaft	Keyway and internal		
PTO Shaft Rotation	Counter clockwise from drive's end		
Dry Weight	10.5 Kg	18 Kg	15 Kg
Dimensions	257*263*340 mm	312*362*335 mm	380*350*420 mm

TROUBLE SHOOTING

The engine does not start:

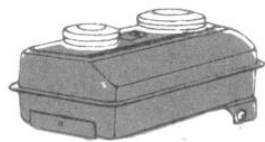
1. Is the Engine SWITCHED – OFF?



2. Check Engine OIL level. Is it low?



3. Check both fuel levels



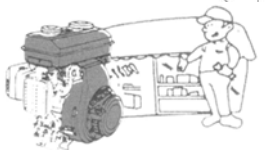
4. Is the fuel reaching the carburetor?



5. Is there good spark in the Spark Plug?

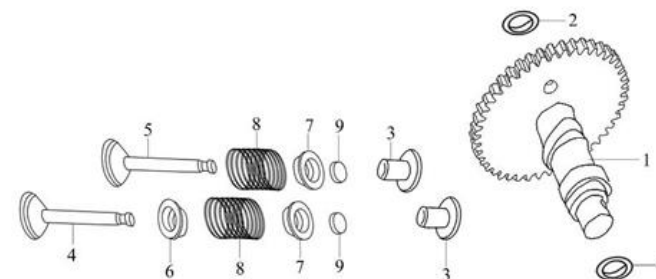


6. If you are still not able to start it, please take the engine to the authorized dealer.

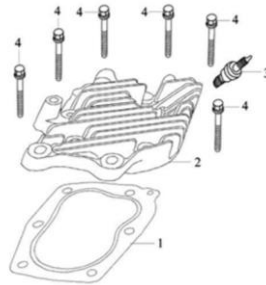


SI No.	Part No.	Description
1	4-1	Crankshaft sub-Assembly
2	4-2	Crankshaft
3	4-3	Woodruff key
4	4-4	Connecting rod
5	4-5	Shank
6	4-6	Cap connecting rod
7	4-7	Bolt M5x24
8	4-8	Piston
9	4-9	Piston pin
10	4-10	Circlip, piston pin
11	4-11	Piston ring set
12	4-12	N/A
13	4-13	
14	4-14	
15	4-15	
16	4-16	
17	4-17	Timing driving gear
18	4-18	Bearing 6203
19	4-19	Key(pulley) 5x5x35

COMBINATION OF CAMSHAFT & VALVE

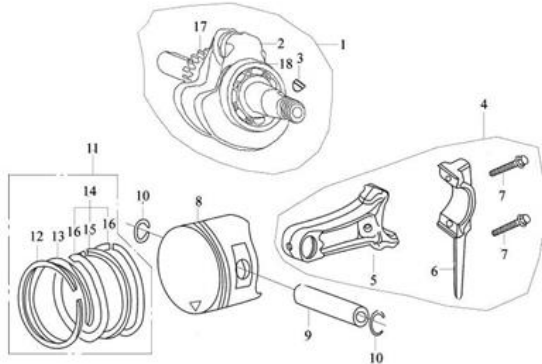


CYLINDER COVER



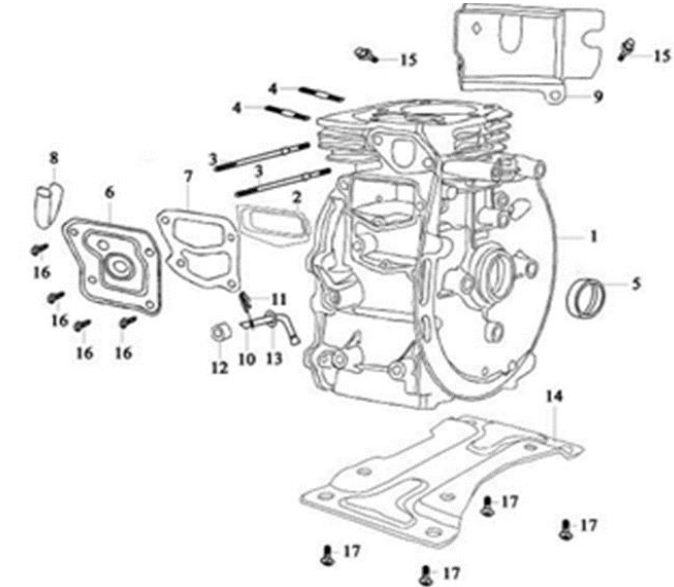
SI No.	Part No.	Description
1	3-1	Gasket, cylinder head
2	3-2	Cylinder cover
3	3-3	Spark plug
4	3-4	Bolt M6×35

CRANKSHAFT, PISTON & CONNECTING ROD



PARTS DIAGRAM & PARTS LIST-KK-GE-100

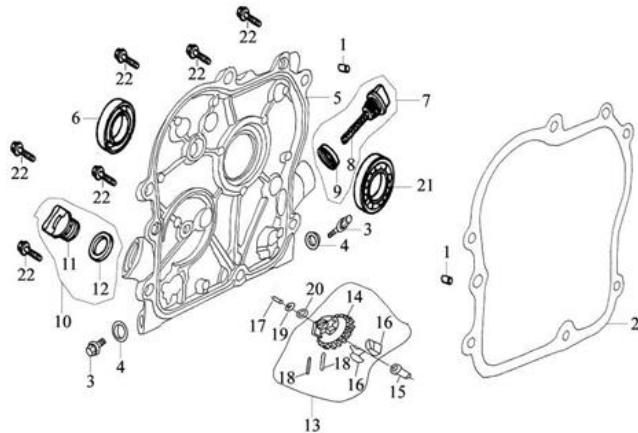
CRANKCASE ASSEMBLY



SI No	Part No.	Description
1	1-1	Crankcase
2	1-2	Valve chamber clapboard sub-Assembly
3	1-3	Stud M5 × 118
4	1-4	Stud M6 × 52
5	1-5	Oil seal(17 × 30 × 6), crankshaft
6	1-6	Cover, oil filter
7	1-7	Gasket-Cover Oil Filter
8	1-8	Return pipe
9	1-9	Flow guard, lower
10	1-10	Sway bar

SI No	Part No.	Description
11	1-11	Keeper, sway bar
12	1-12	Oil seal, sway bar
13	1-13	Washer, sway bar
14	1-14	Bottom plate
15	1-15	Bolt M6×14
16	1-16	Bolt M5×10
17	1-17	Bolt M8×14
18	1-18	Oil Sensor

CRANKCASE COVER ASSEMBLY



SI No	Part No.	Description
1	2-1	Set pin $\phi 8 \times 14$
2	2-2	Gasket, crankcase
3	2-3	Drain plug
4	2-4	Washer -Drain Plug
5	2-5	Crankcase cover
6	2-6	Oil seal(17×30×6), crankshaft
7	2-7	Dipstick sub-Assembly
8	2-8	OIL Dipstick
9	2-9	Seal, dipstick
10	2-10	Oil plug sub-Assembly
11	2-11	Oil plug
12	2-12	Seal, oil plug
13	2-13	Driven gear sub-Assembly, governor
14	2-14	Driven gear, governor
15	2-15	Sliding sleeve
16	2-16	Flyweight
17	2-17	Governing shaft
18	2-18	Pin, flyweight
19	2-19	Snap ring
20	2-20	Washer, driven gear
21	2-21	Bearing 6203
22	2-22	Bolt M6×29