

KisanKraft® Warranty Certificate

(KISANKRAFT COPY)

Important: (1) Normal maintenance and adjustments to the product is the responsibility of the customer. (2) Normal wear and tear is not covered under warranty. (3) Rubber/plastic parts and consumables such as blades, clutch and clutch-bell, spark-plugs, nylon line, air-filters, fuel-filters, oil seals etc. are not covered under the warranty.

No Warranty On Electrical Motor / Electrical Parts / Battery Etc.

Incidental / Consequential Loss: KisanKraft Limited or its manufacturers will not be liable for general damages, including bodily injuries, or for incidental or consequential damages including, but not limited to, loss of use, loss of profits, loss of production, expense of substitute equipment or other commercial loss or damage.

Limitation of Liability: This limited warranty is in lieu of all other express warranties, obligations, or liabilities. Any implied warranties, obligations or liabilities, including, but not limited to, any implied warranty of merchantability shall be limited in duration to the applicable warranty period. Any action for breach of any warranty hereunder, including, but not limited to, any implied warranty of merchantability must be brought within the applicable warranty period.

Modifications of Warranty: No agent, representative, dealer, or employee of KisanKraft Limited or any of its manufacturers has the authority to increase or alter the obligations of this warranty.

Assignment / Transfer of warranty: The warranty cannot be assigned and shall not transfer if the product is resold by the first buyer. The above warranties are extended to the first end user (original purchaser), and no warranty is made, nor authorized to be made assignable on resale by the first end user.

What you must do to obtain limited warranty service: To obtain performance of any obligation under this warranty for failure during the applicable warranty period, deliver the defective product, to the nearest Authorized Dealer. KisanKraft Limited, its manufacturers and its dealers reserve the right to inspect the claimed defective part(s) to determine if the malfunction is the result of a defect covered by this warranty. Please note that the decision of KisanKraft Limited with respect to any warranty claim is final.

Receipt is required for availing warranty services

Jurisdiction: All disputes are subject to Bangalore court's jurisdiction.

Our Products	<ul style="list-style-type: none"> ◆Chainsaws◆Brush Cutters and Accessories◆Harvesters◆ ◆Engines and Water Pumps◆Hand Tools◆Garden Tools◆ ◆Cultivators and Accessories◆Sprayers and Accessories◆ ◆Transplanter and Post Hole Digger◆Milking Machines◆
---------------------	---

This warranty is null & void, if you fail to register the warranty with KisanKraft by sending the KisanKraft Copy with dealer's stamp.

KisanKraft Limited (formerly known as KisanKraft Machine Tools P Ltd)

🌐: www.kisankraft.com ✉: info@kisankraft.com ☎: +91.80.22178200

KisanKraft® Warranty Certificate

(DEALER COPY)

Product	Spark Ignition Internal Combustion Piston Engines For Agriculture	KisanKraft™ Invoice Date	
Brand	KisanKraft	KisanKraft™ Invoice No.	
Model	<input type="checkbox"/> KK-GE-100 <input type="checkbox"/> KK-GE-160 <input type="checkbox"/> KK-GE-200		
WARRANTY PERIOD	6 MONTHS	FOR THE SPECIFIED PERIOD FROM THE DATE OF SALE OR DELIVERY WHICHEVER IS EARLIER.	
Dealer's Invoice Date		Dealer's Invoice No.	
Buyer's Info (Name, Address, Phone, etc.):		Dealer's Stamp (Address, Phone, TIN, etc.):	
Buyer's Sign		Dealer's Sign	

What is covered: KisanKraft Limited and its manufacturers warrant this product to be free from defects in material or workmanship. All parts defective in material and workmanship are covered.

This warranty will only cover defects arising under normal usage.

This warranty is limited to repair or replacement by KisanKraft Limited or its manufacturers at the premises of Authorized Dealers, of such parts as appear to KisanKraft or its manufacturers, upon inspection, to be defective in material and/or workmanship. KisanKraft or its manufacturers make no warranty with respect to trade accessories not manufactured or sold by them.

What is not covered: The warranty shall become null and void and neither KisanKraft Limited nor any of its manufacturers, nor its authorized dealers assumes any responsibility, if the failure was caused by the following:

- (1) Operation of product with incorrect fuel or lubricants,
- (2) Incorrect usage of machine or misuse,
- (3) Lack of maintenance,
- (4) Negligence,
- (5) Accident or physical damage,
- (6) Repairs made by unauthorized parties and/or with unauthorized parts,
- (7) Improper set up, adjustments, tampering or altered products

Note: The purchase is not contingent upon a product demonstration. The purchaser shall satisfy himself with the product, including any product demonstration or verification of any function, before buying. KisanKraft Limited or its authorized dealers, including online sellers, shall not be liable to give any on-site demonstration after purchase of any of the product.

This warranty is null & void, if you fail to register the warranty with KisanKraft by sending the KisanKraft Copy with dealer's stamp.

KisanKraft Limited (formerly known as KisanKraft Machine Tools P Ltd)

🌐: www.kisankraft.com ✉: info@kisankraft.com ☎: +91.80. 22178200

Important: (1) Normal maintenance and adjustments to the product is the responsibility of the customer. (2) Normal wear and tear is not covered under warranty (3) Rubber/plastic parts and consumables such as blades, clutch and clutch-bell, spark-plugs, nylon line, air-filters, fuel-filters, oil seals etc. are not covered under the warranty.

No Warranty On Electrical Motor / Electrical Parts / Battery Etc.

Incidental / Consequential Loss: KisanKraft Limited or its manufacturers will not be liable for general damages, including bodily injuries, or for incidental or consequential damages including, but not limited to, loss of use, loss of profits, loss of production, expense of substitute equipment or other commercial loss or damage.

Limitation of Liability: This limited warranty is in lieu of all other express warranties, obligations, or liabilities. Any implied warranties, obligations or liabilities, including, but not limited to, any implied warranty of merchantability shall be limited in duration to the applicable warranty period. Any action for breach of any warranty hereunder, including, but not limited to, any implied warranty of merchantability must be brought within the applicable warranty period.

Modifications of Warranty: No agent, representative, dealer, or employee of KisanKraft Limited or any of its manufacturers has the authority to increase or alter the obligations of this warranty.

Assignment / Transfer of warranty: The warranty cannot be assigned and shall not transfer if the product is resold by the first buyer. The above warranties are extended to the first end user (original purchaser), and no warranty is made, nor authorized to be made assignable on resale by the first end user.

What you must do to obtain limited warranty service: To obtain performance of any obligation under this warranty for failure during the applicable warranty period, deliver the defective product, to the nearest Authorized Dealer. KisanKraft Limited, its manufacturers and its dealers reserve the right to inspect the claimed defective part(s) to determine if the malfunction is the result of a defect covered by this warranty. Please note that the decision of KisanKraft Limited with respect to any warranty claim is final.

Receipt is required for availing warranty services

Jurisdiction: All disputes are subject to Bangalore court's jurisdiction.

Our Products	<ul style="list-style-type: none"> ◆Chainsaws◆Brush Cutters and Accessories◆Harvesters◆ ◆Engines and Water Pumps◆Hand Tools◆ Garden Tools◆ ◆Cultivators and Accessories◆Sprayers and Accessories◆ ◆Transplanter and Post Hole Digger ◆ Milking Machines ◆
---------------------	---

This warranty is null & void, if you fail to register the warranty with KisanKraft by sending the KisanKraft Copy with dealer's stamp.

KisanKraft Limited (formerly known as KisanKraft Machine Tools P Ltd)

🌐: www.kisankraft.com ✉: info@kisankraft.com ☎: +91.80. 22178200

Product	Spark Ignition Internal Combustion Piston Engines For Agriculture	KisanKraft™ Invoice Date	
Brand	KisanKraft	KisanKraft™ Invoice No.	
Model	<input type="checkbox"/> KK-GE-100 <input type="checkbox"/> KK-GE-160 <input type="checkbox"/> KK-GE-200		
WARRANTY PERIOD	6 MONTHS	FOR THE SPECIFIED PERIOD FROM THE DATE OF SALE OR DELIVERY WHICHEVER IS EARLIER.	
Dealer's Invoice Date		Dealer's Invoice No.	
Buyer's Info (Name, Address, Phone, etc.):		Dealer's Stamp (Address, Phone, TIN, etc.):	
Buyer's Sign		Dealer's Sign	

What is covered: KisanKraft Limited and its manufacturers warrant this product to be free from defects in material or workmanship. All parts defective in material and workmanship are covered.

This warranty will only cover defects arising under normal usage.

This warranty is limited to repair or replacement by KisanKraft Limited or its manufacturers at the premises of Authorized Dealers, of such parts as appear to KisanKraft or its manufacturers, upon inspection, to be defective in material and/or workmanship. KisanKraft or its manufacturers make no warranty with respect to trade accessories not manufactured or sold by them.

What is not covered: The warranty shall become null and void and neither KisanKraft Limited nor any of its manufacturers, nor its authorized dealers assumes any responsibility, if the failure was caused by the following:

(1) Operation of product with incorrect fuel or lubricants, (2) Incorrect usage of machine or misuse, (3) Lack of maintenance, (4) Negligence, (5) Accident or physical damage, (6) Repairs made by unauthorized parties and/or with unauthorized parts, (7) Improper set up, adjustments, tampering or altered products

Note: The purchase is not contingent upon a product demonstration. The purchaser shall satisfy himself with the product, including any product demonstration or verification of any function, before buying. KisanKraft Limited or its authorized dealers, including online sellers, shall not be liable to give any on-site demonstration after purchase of any of the product.

This warranty is null & void, if you fail to register the warranty with KisanKraft by sending the KisanKraft Copy with dealer's stamp.

KisanKraft Limited (formerly known as KisanKraft Machine Tools P Ltd)

🌐: www.kisankraft.com ✉: info@kisankraft.com ☎: +91.80.22178200

Wide Range of Products for Every Need



For more information give **MISSED CALL: 07676065555**



Many of our products have BIS: ISI certification.



Operation manual



KisanKraft Limited

(Formerly known as KisanKraft Machine Tools Pvt. Ltd)

Sri Huchhanna Tower, #4, 1st Main, 7-A Cross, Maruthi Layout, Dasarahalli,
HAF Post, Hebbal, Bangalore 560024, Karnataka, INDIA

- ♦ Bangalore (HO) ♦ Ahmedabad ♦ Bhopal ♦ Bhubaneswar ♦ Coimbatore ♦
- ♦ Jammu ♦ Guwahati ♦ Shimla ♦ Hubli ♦ Hyderabad ♦
- ♦ Jaipur ♦ Karnal ♦ Kolkata ♦ Lucknow ♦ Pune ♦ Raipur ♦

CONTENTS

BEFORE GETTING STARTED	7
SAFETY INSTRUCTIONS	7
ENGINE COMPONENTS	8
OPERATION	9
Pre-Operation Checks	9
Starting the Engine (COLD START):	11
Starting the Engine (HOT START):	13
Stopping the Engine:	14
MAINTENANCE	15
STORAGE	17
TECHNICAL SPECIFICATIONS	18
TROUBLE SHOOTING	19
PARTS DIAGRAM & PARTS LIST-KK-GE-100	20
PARTS DIAGRAM & LIST-KK-GE-160/200	33

KisanKraft has a large range of products to serve the farmers. A list of our products is given below:

Brush Cutters and Accessories Brush Cutter/Power Weeder Backpack Brush Cutter Tea Pruner Pole pruner with Engine Reaper Attachment Blades-Circular Blades (2 & 3 points) Baffle Nylon Rope Tap & Go Chainsaws Petrol Chainsaw Electric Chainsaw Chain Sharpening Machine Engines and Water Pumps Engine –Diesel-(Horizontal) Engine –Diesel(Vertical) Engine-Kerosene Water Pump with Petrol Engine Water Pump with Kerosene Engine Water Pump with Diesel Engine Hand Tools Secateurs Folding Saw Garden Rake Garden Shovel Hedge Shear Lopper Telescopic Hedge Shear Telescopic Lopping Shear Tree Pruner Telescopic Steel Pipe & Fruit Picker Bag Sheep Shear Garden Tools Electric Pressure Washer Hedge Trimmer Lawn Mower (Electric, Petrol & Manual) Leaf Blower	Cultivators and Accessories Petrol and Diesel Sprayers and Accessories Battery Sprayer Portable Power Sprayer Trolley Sprayer Manual Knapsack Sprayer Manual Pressure Sprayer Rose Cans Hose Crimping Machine HTP Sprayer HTP Delivery Hose HTP Hose Reel HTP Stand HTP Gun / Lance(Brass Rod) Knapsack Power Sprayer Mister / Duster / Granuel Spreader HTP Sprayer Set with Diesel Engine HTP Sprayer Set with Kerosene Engine Fogging Machine Milking Machine Wood Shredder Fodder Ensiling Chaff Cutter Fodder Grinder Chaff Cutter Fodder Mini Chaff Cutter Harvester Maize Sheller Maize Sheller + Dehusker Maize Combine Harvester Onion Digger Carlotti Italy Tea Leaf Harvester Sugarcane Combine Harvester Sugarcane Leaf Stripper Transplanter and Post Hole Digger Paddy Transplanter (2 & 8 Rows) Transplanter-Vegetable & Tobacco Post Hole Digger(4" to 14"Augers)
--	--

Sl. No	Part Name	Part No
1	Fuel tank Assembly	12-1
1.1	Fuel tank cover Assembly.	12-1.1
1-1.1	Fuel tank cover	12-1.1.1
1-1.2	Rubber seal, Fuel tank cover 38x56x3	12-1.1.2
1.2	Fuel filter Assembly	12-1.2
1-2.1	Support, Fuel filter	12-1.2.1
1-2.2	Fuel filter	12-1.2.2
1.3	Fuel tank	12-1.3
1.4	Fuel joint Assembly	12-1.4
1-4.1	Nut M10	12-1.4.1
1-4.2	Fuel joint	12-1.4.2
2	Fuel tube 8.5x4.5	12-2
3	Clip Fuel tube	12-3
4	Bolt M6 x 28	12-4
5	Nut M6	12-5
6	Fuel joint	12-6
7	Bracket	12-7
8	Fuel tube 8.5x4.5	12-8

Product	Spark Ignition Internal Combustion Piston Engines For Agriculture	KisanKraft™ Invoice Date	
Brand	KisanKraft	KisanKraft™ Invoice No.	
Model	<input type="checkbox"/> KK-GE-100 <input type="checkbox"/> KK-GE-160 <input type="checkbox"/> KK-GE-200		
WARRANTY PERIOD	6 MONTHS	FOR THE SPECIFIED PERIOD FROM THE DATE OF SALE OR DELIVERY WHICHEVER IS EARLIER.	
Dealer's Invoice Date		Dealer's Invoice No.	
Buyer's Info (Name, Address, Phone, etc.):		Dealer's Stamp (Address, Phone, TIN, etc.):	
Buyer's Sign		Dealer's Sign	

What is covered: KisanKraft Limited and its manufacturers warrant this product to be free from defects in material or workmanship. All parts defective in material and workmanship are covered.

This warranty will only cover defects arising under normal usage.

This warranty is limited to repair or replacement by KisanKraft Limited or its manufacturers at the premises of Authorized Dealers, of such parts as appear to KisanKraft or its manufacturers, upon inspection, to be defective in material and/or workmanship. KisanKraft or its manufacturers make no warranty with respect to trade accessories not manufactured or sold by them.

What is not covered: The warranty shall become null and void and neither KisanKraft Limited nor any of its manufacturers, nor its authorized dealers assumes any responsibility, if the failure was caused by the following:

- (1) Operation of product with incorrect fuel or lubricants, (2) Incorrect usage of machine or misuse, (3) Lack of maintenance, (4) Negligence, (5) Accident or physical damage, (6) Repairs made by unauthorized parties and/or with unauthorized parts, (7) Improper set up, adjustments, tampering or altered products

Note: The purchase is not contingent upon a product demonstration. The purchaser shall satisfy himself with the product, including any product demonstration or verification of any function, before buying. KisanKraft Limited or its authorized dealers, including online sellers, shall not be liable to give any on-site demonstration after purchase of any of the product.

This warranty is null & void, if you fail to register the warranty with KisanKraft by sending the KisanKraft Copy with dealer's stamp.

KisanKraft Limited (formerly known as KisanKraft Machine Tools P Ltd)

Important: (1) Normal maintenance and adjustments to the product is the responsibility of the customer. (2) Normal wear and tear is not covered under warranty. (3) Rubber/plastic parts and consumables such as blades, clutch and clutch-bell, spark-plugs, nylon line, air-filters, fuel-filters, oil seals etc. are not covered under the warranty.

No Warranty On Electrical Motor / Electrical Parts / Battery Etc.

Incidental / Consequential Loss: KisanKraft Limited or its manufacturers will not be liable for general damages, including bodily injuries, or for incidental or consequential damages including, but not limited to, loss of use, loss of profits, loss of production, expense of substitute equipment or other commercial loss or damage.

Limitation of Liability: This limited warranty is in lieu of all other express warranties, obligations, or liabilities. Any implied warranties, obligations or liabilities, including, but not limited to, any implied warranty of merchantability shall be limited in duration to the applicable warranty period. Any action for breach of any warranties hereunder, including, but not limited to, any implied warranty of merchantability must be brought within the applicable warranty period.

Modifications of Warranty: No agent, representative, dealer, or employee of KisanKraft Limited or any of its manufacturers has the authority to increase or alter the obligations of this warranty.

Assignment / Transfer of warranty: The warranty cannot be assigned and shall not transfer if the product is resold by the first buyer. The above warranties are extended to the first end user (original purchaser), and no warranty is made, nor authorized to be made assignable on resale by the first end user.

What you must do to obtain limited warranty service: To obtain performance of any obligation under this warranty for failure during the applicable warranty period, deliver the defective product, to the nearest Authorized Dealer. KisanKraft Limited, its manufacturers and its dealers reserve the right to inspect the claimed defective part(s) to determine if the malfunction is the result of a defect covered by this warranty. Please note that the decision of KisanKraft Limited with respect to any warranty claim is final.

Receipt is required for availing warranty services

Jurisdiction: All disputes are subject to Bangalore court's jurisdiction.

Our Products

- ◆ Chainsaws ◆ Brush Cutters and Accessories ◆ Harvesters ◆
- ◆ Engines and Water Pumps ◆ Hand Tools ◆ Garden Tools ◆
- ◆ Cultivators and Accessories ◆ Sprayers and Accessories ◆
- ◆ Transplanter and Post Hole Digger ◆ Milking Machines ◆

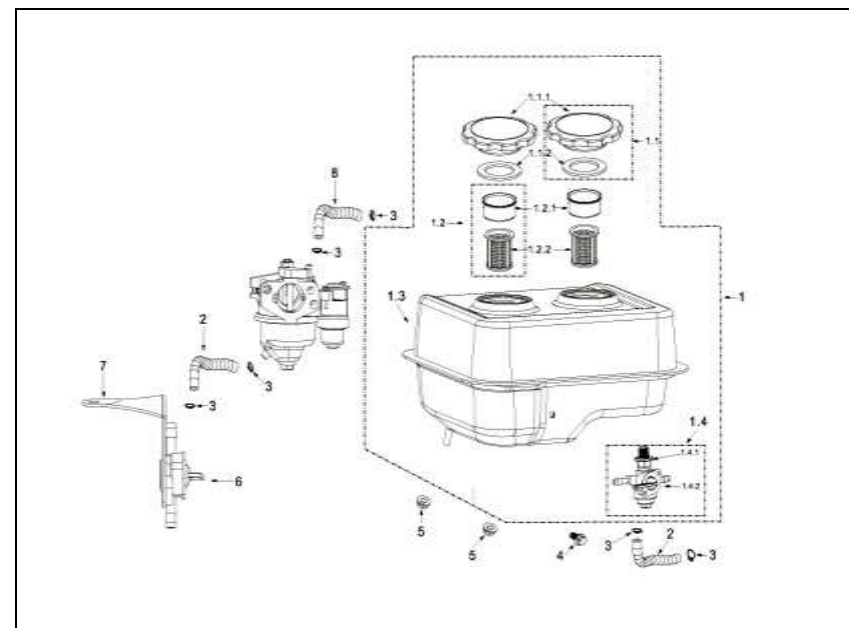
This warranty is null & void, if you fail to register the warranty with KisanKraft by sending the KisanKraft Copy with dealer's stamp.

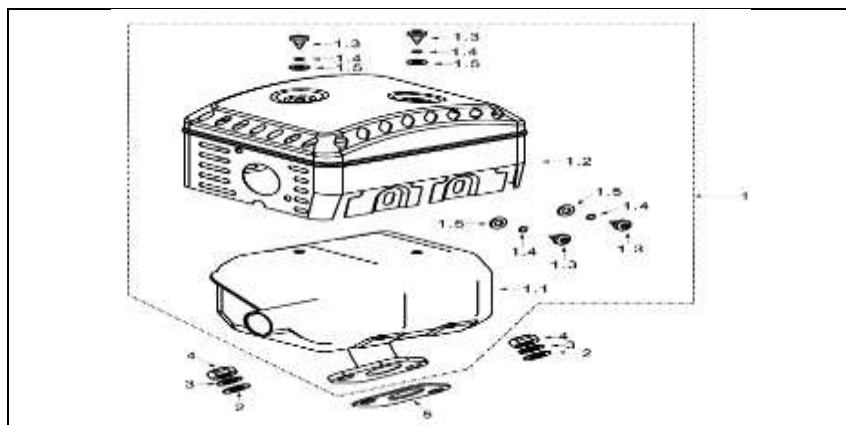
KisanKraft Limited (formerly known as KisanKraft Machine Tools P Ltd)

🌐: www.kisankraft.com

✉: info@kisankraft.com

☎: +91.80. 22178200





Sl. No	Part Name	Part No
1	Muffler Assembly	11-1
1.1	Muffler body	11-1.1
1.2	Protector Muffler -A	11-1.2
1.3	Screw M5 x 8	11-1.3
1.4	Spring washer $\Phi 5$	11-1.4
1.5	Washer $\Phi 5$	11-1.5
2	Washer $\Phi 8$	11-2
3	Spring $\Phi 8$	11-3
4	Nut M8	11-4
5	Gasket (Exhaust Part)	11-5

Fuel Tank-kerosene Engine

BEFORE GETTING STARTED

Thank you for your purchase and use of our products. In order to avoid accidents or injury, **please read this manual carefully** before using the machine. After reading, preserve it for further reference.

SAFETY INSTRUCTIONS

1. Please do not use this engine inside an enclosed area. Ensure adequate ventilation while Engine is in operation.

CAUTION: Exhaust contains POISONOUS Carbon Mono Oxide gas



2. To prevent fire hazard, please keep the Engine in operation at least 1-meter (3 feet) away from Combustible or Inflammable materials, buildings and equipment.



3. When refueling you must STOP the Engine. Please do not smoke near Engine. Wipe the spilled fuel after refueling.

CAUTION: Spilled fuel is a fire hazard.



4. Do NOT cover the Engine when in operation!



5. Do NOT connect any pipe to exhaust muffler!



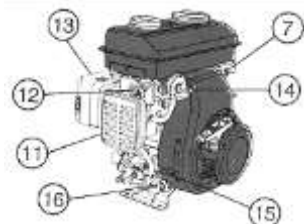
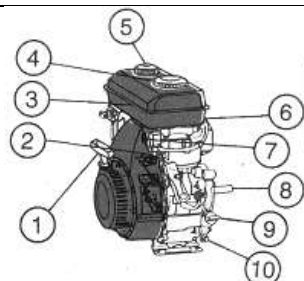
6. Do NOT tilt the Engine more than 21 degrees.



ENGINE COMPONENTS

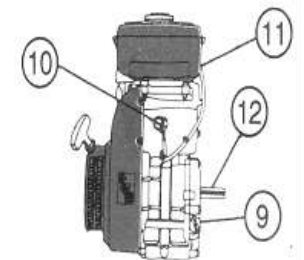
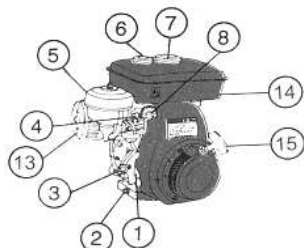
KK-GE-100/160

1. Recoil Starter
2. Engine Switch
3. Fuel Tank
4. Kerosene Tank Cap
5. Petrol Tank Cap
6. Spark Plug
7. Oil Alert Lamp
8. PTO Shaft
9. Engine Oil Filter Cap
10. Engine Oil Drain Bolt
11. Air Cleaner
12. Choke
13. Muffler
14. Fuel Cock
15. Throttle Weaver
16. Drain Cock



KK-GE-200

1. Throttle Lever
2. Engine Drain Bolt
3. Drain Cock
4. Choke Rod
5. Air Cleaner
6. Petrol Tank Cap
7. Kerosene Tank Cap
8. Fuel Cock
9. Engine Oil Filter Cap
10. Engine Switch
11. Spark Plug
12. P.T.O. Shaft
13. Muffler
14. Fuel Tank
15. Recoil Starter

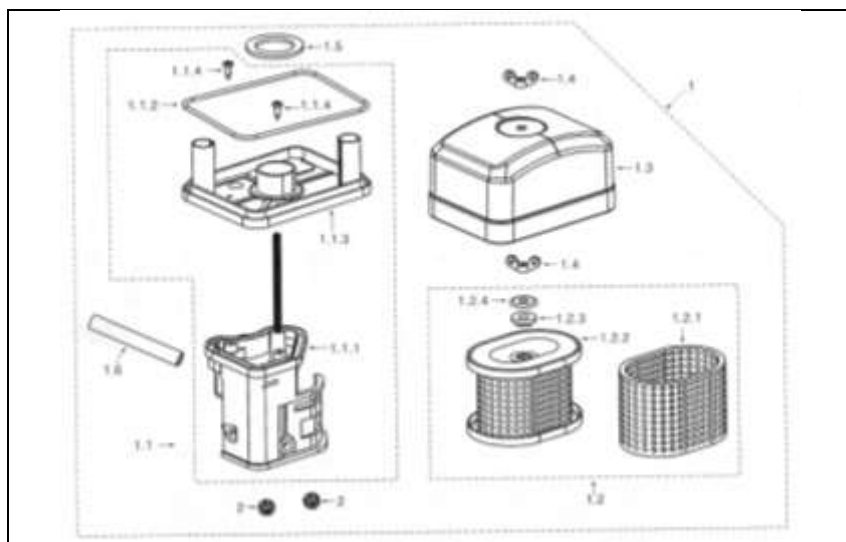


Sl. No	Part Name	Part No
1	Air Cleaner Assembly	10-1
1-1	Air Cleaner Seat Ass.	10-1.1
1-1.1	Air Cleaner seat	10-1.1.1
1-1.2	Seal Ring	10-1.1.2
1-1.3	Cover board	10-1.1.3
1-1.4	Screw M4 x 12	10-1.1.4
1-2	Filter Assembly	10-1.2
1-2.1	Foam Filter	10-1.2.1
1-2.2	Papery Filter	10-1.2.2
1-2.3	Rubber Fixer	10-1.2.3
1-2.4	Decal Washer	10-1.2.4
1.3	Filter Case	10-1.3
1.4	Butter Fly nut M6	10-1.4
1.5	Seal Ring 32x47x3	10-1.5
1.6	Air duck	10-1.6
2	Nut M6	10-2

Muffler Parts

Sl. No	Part Name	Part No
1-21	O-ring 21x2	9-1.21
1-22	Fuel Valve	9-1.22
1-23	Handle Bar	9-1.23
1-24	Spring Washer- big	9-1.24
1-25	Upper cover	9-1.25
1-26	Spring washer-small 3	9-1.26
1-27	Screw M3x7	9-1.27
2	Steel gasket	9-2
3	Gasket carburetor	9-3
4	Block Carburetor	9-4
5	Gasket, inlet port	9-5

Air Cleaner (Hemi -Dry type)



OPERATION

Pre-Operation Checks

Oil Level:

Please check the Engine Oil Level by putting the engine on a flat surface

If the oil level looks low, please check the Oil Level.
Add oil to the recommended level

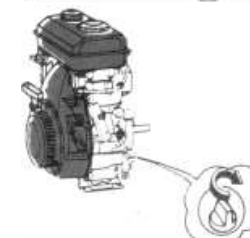
Remember to tighten the Oil cap!

Recommended Engine Oil

If the OIL level in crankcase falls below a safe limit, then Oil Alert level system will automatically turn off the Engine.

NOTE: The Engine will not start if the Oil Alert Level System has turned off the Engine.

You will need to fill OIL to the recommended level, before you can restart the Engine.



SAE 10W-40 or SAE 20W-40
API Classification: SF Minimum



Fuel Level:

Check the fuel level before starting the Engine.

Add fuel, if the level is low
Fill fuel to the shoulder of fuel filter.

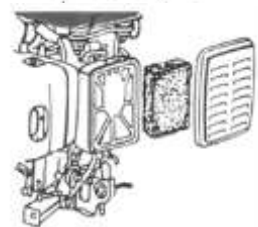
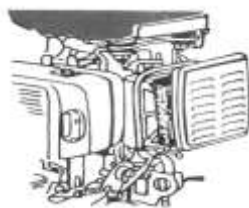
CAUTION:

- (1) Do not put Kerosene in Petrol tank, otherwise Engine will be very hard to start.
- (2) Do not put Petrol with Oil-mixed in it.
- (3) Do not put dirty, contaminated fuel

Air Filter:

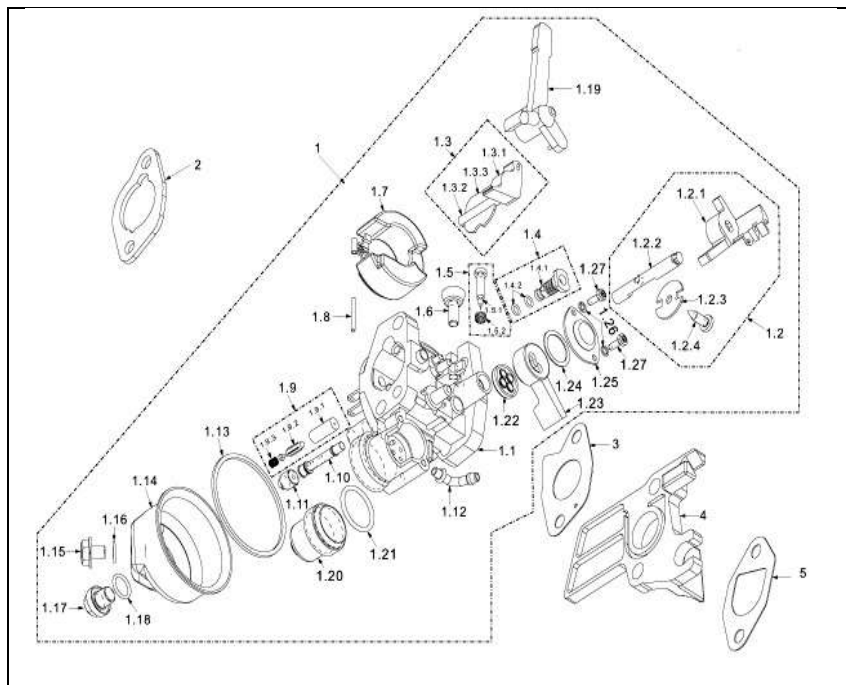
Open Air-cleaner cover and remove the air cleaner element.

Check for dust/dirt in the air filter.
If it is dirty you should clean it as shown below.

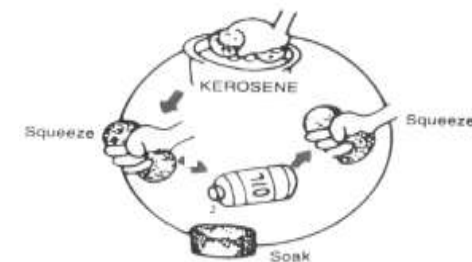


Sl. No	Part Name	Part No
1-3.1	Chock Valve cap	9-1.3.1
1-3.2	Chock Valve axis	9-1.3.2
1-3.3	Chock Valve	9-1.3.3
1-4	Measure hole Assembly idle speed	9-1.4
1-4.1	Measure hole, idle speed	9-1.4.1
1-4.2	O-ring 4.7x1	9-1.4.2
1-5	Adjustment Screw Assembly mixture ratio	9-1.5
1-5.1	Adjustment screw, mixture ratio M4x12	9-1.5.1
1-5.2	Spring	9-1.5.2
1-6	Adjustment screw Idle speed	9-1.6
1-7	Fuel Floater	9-1.7
1-8	Pin Fuel Floater	9-1.8
1-9	Needle Valve Assembly	9-1.9
1-9.1	Needle Valve seat	9-9.1
1-9.2	Needle Valve	9-9.2
1-9.3	Spring, Needle valve	9-9.3
1-10	Main Jet	9-1.10
1-11	Main Measuring hole	9-1.11
1-12	Fuel inlet Tube	9-1.12
1-13	Rubber seal (Fuel cup)	9-1.13
1.14	Fuel cup	9-1.14
1-15	Fuel drain plug	9-1.15
1-16	Gasket fuel drain plug	9-1.16
1-17	Tighten bolt (Fuel cup)	9-1.17
1-18	O-ring 11x1.5	9-1.18
1-19	Hand grip chock valve Assembly	9-1.19
1-20	Sediment cup	9-1.20

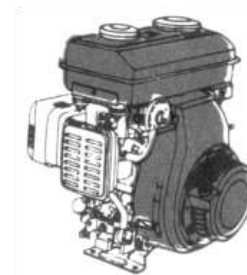
Carburetor Parts



Sl. No	Part Name	Part No
1	Carburetor Assembly	9-1
1-1	Carburetor Body oil	9-1.1
1-2	Throttle Valve Assembly	9-1.2
1-2.1	Throttle Valve Cap	9-1.2.1
1-2.2	Throttle Valve axis	9-1.2.2
1-2.3	Throttle Valve	9-1.2.3
1-2.4	Screw M4x12	9-1.2.4
1-3	Chock Valve Assembly	9-1.3

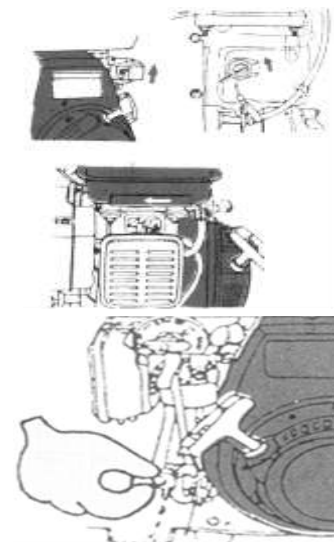


Clean air filter element and refit it in the Air-filter of the engine.

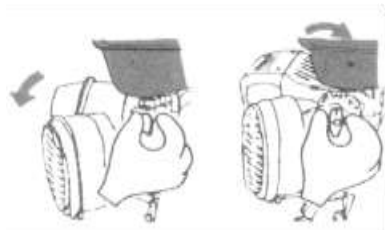


Starting the Engine (COLD START):

1. Turn the Engine switch to ON position
2. Put the choke in the shown position.
3. Turn the Drain Cock to ON position and drain the Kerosene from the carburetor.
4. Turn the Drain Cock to OFF position after you have drained the Kerosene.
5. Return the Kerosene to the Kerosene Tank.



6. Turn the Fuel Cock to START / ON position



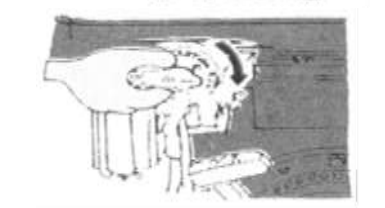
7. Increase the throttle (accelerator) level slightly
8. Make sure that there is no (minimum) load attached to the Engine



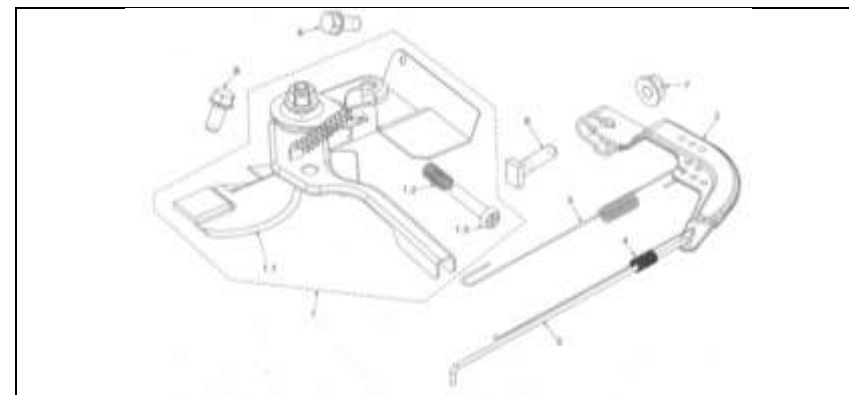
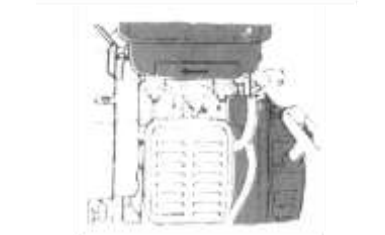
9. Pull the starter grip, until you feel the resistance
10. Then pull the rope fast
11. Do not leave the rope. Do not allow rope to snap back.
12. Return the rope slowly, by hand, to the recoil starter



13. Turn the fuel cock to RUN position.

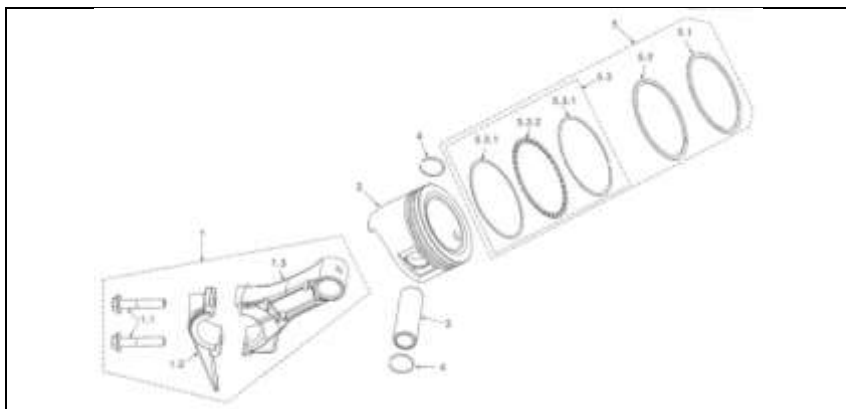


14. Close the choke as indicated on the Engine.



Sl. No	Part Name	Part No
1	Speed Adjustment base part	8-1
1-1	Speed Adjustment Base Ass.	8-1.1
1-2	Adjustment Spring	8-1.2
1-3	Adjustment Screw	8-1.3
2	Speed Adjustment arm	8-2
3	Return Spring	8-3
4	Fine Adjustment Spring	8-4
5	Pulling Rod	8-5
6	Quadrate bolt M6x21	8-6
7	Nut M6	8-7
8	Bolt M6 x 12	8-8

Piston

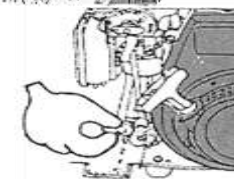


Sl. No	Part Name	Part No
1	Connecting rod Assembly	7-1
1-1	Bolt connecting rod M7x35	7-1.1
1-2	Cover, connecting rod	7-1.2
1-3	Body, connecting rod	7-1.3
2	Piston	7-2
3	Piston Pin	7-3
4	Clip Piston Pin	7-4
5	Piston Ring Assembly	7-5
5-1	First air ring	7-5.1
5-2	Second air ring	7-5.2
5-3	Oil ring Ass.	7-5.3
5-3.1	Scraper ring	7-5.3.1
5-3.2	Set off ring	7-5.3.2

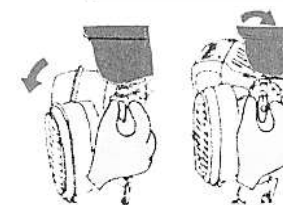
Speed Adjustment Base Parts

Starting the Engine (HOT START):

1. Turn the Engine switch to ON position
2. Close the choke as indicated on the Engine
3. Raise the throttle lever slightly
4. Make sure that there is no (minimum) load attached to the Engine.



5. Turn the Fuel Cock to RUN / ON position.



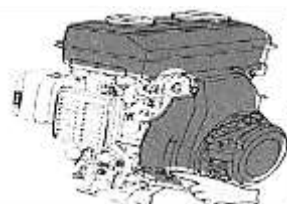
6. Pull the starter grip, until you feel the resistance
7. Then pull the rope fast.
8. Do not leave the rope. Do not allow the rope to snap back.



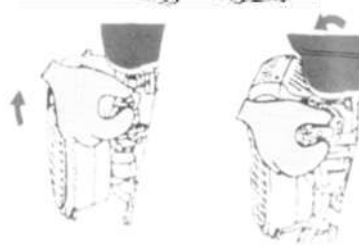
Return the rope slowly, by hand, to the recoil starter

Stopping the Engine:

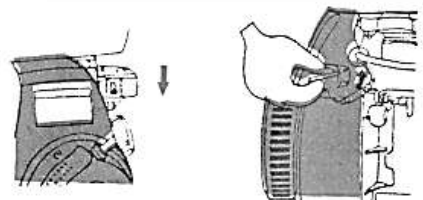
1. Move the throttle (accelerator) lever fully down.



2. Turn the Fuel Cock to STOP / OFF position

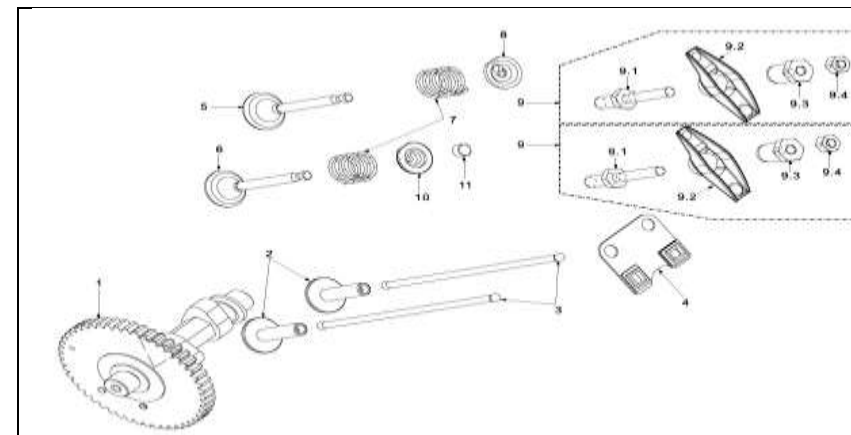


3. Turn the Engine switch to OFF position.



NOTE: In case of emergency, in order to stop the engine just turn the switch to OFF position.

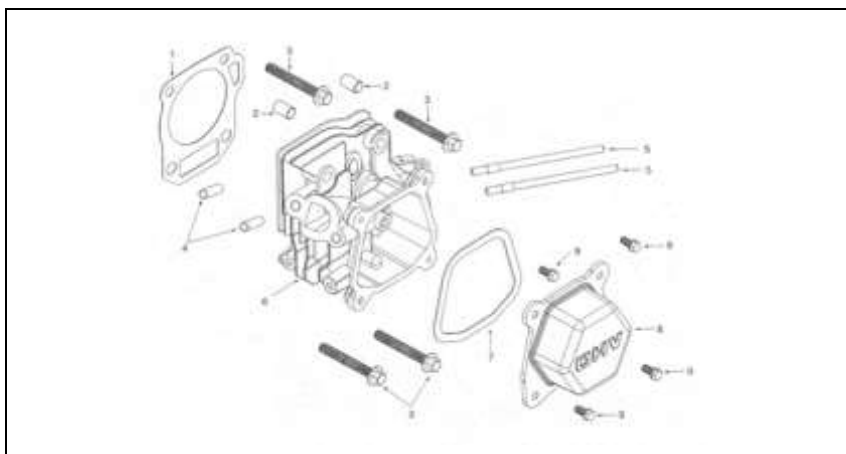
Cam Shaft



Sl. No	Part Name	Part No
1	Cam Shaft Assembly	6-1
2	Tappet	6-2
3	Pusher	6-3
4	Pusher guide	6-4
5	Intake Valve	6-5
6	Exhaust Valve	6-6
7	Valve Spring	6-7
8	Spring seat Intake Valve	6-8
9	Rocker Ass.	6-9
9-1	Stud Rocker Assembly	6-9.1
9-2	Rocker	6-9.2
9-3	Adjust Nut Sphere	6-9.3
9-4	Lock Nut	6-9.4
10	Spring Seat Exhaust Valve	6-10
11	Cap Exhaust valve	6-11

Sl. No	Part Name	Part No
1-11	Rope	4-1.11
1-12	Pulley handle	4-1.12
1-13	Bolt M6X8	4-1.13
2	Bolt M6x12	4-2
3	Engine switch	4-3

Cylinder Head



Sl. No	Part Name	Part No
1	Gasket Cylinder head	5-1
2	Set pin 10x14	5-2
3	Bolt M8 x 60, 22	5-3
4	Stud Exhaust M8 x 32	5-4
5	Stud Intake M6 x 113	5-5
6	Cylinder head Assembly	5-6
7	Gasket Cylinder head cover	5-7
8	Cylinder head cover	5-8
9	Bolt M6x12	5-9

MAINTENANCE

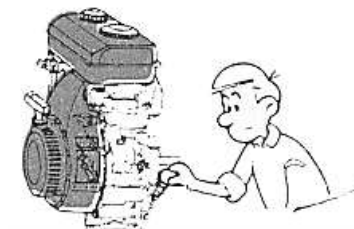
Item	Period	Before Each Use	First Month	Every 3- Months	Every 6- Months	1- Year	3- Years
Engine Oil		Check	Change		Change		
Air Cleaner		Check		Clean			
Spark Plug					Check, Clean, Readjust		
Muffler						Clean	
Cylinder Head						Clean	
Fuel Filter & Fuel Pipe						Clean	Change
Valves						Check, Readjust	

Important:

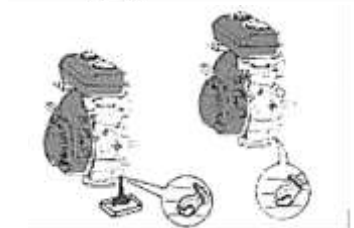
- Oil should be changed after first 20 hours of use. After that OIL should be changed every 100-hours of use.
- If you are in dusty environment, service more frequently
- Always use genuine spare parts and take it for servicing to authorized dealers.

Oil Change:

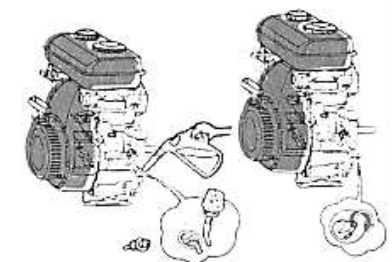
Remove Oil Filter cap



Remove the drain bolt, and drain the old oil.



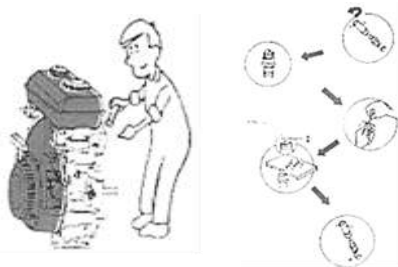
1. Tighten the drain bolt.
2. Fill the new Recommended Oil to the maximum level (neck of the oil filler)
3. Tighten the Oil Filler cap.



Spark Plug:

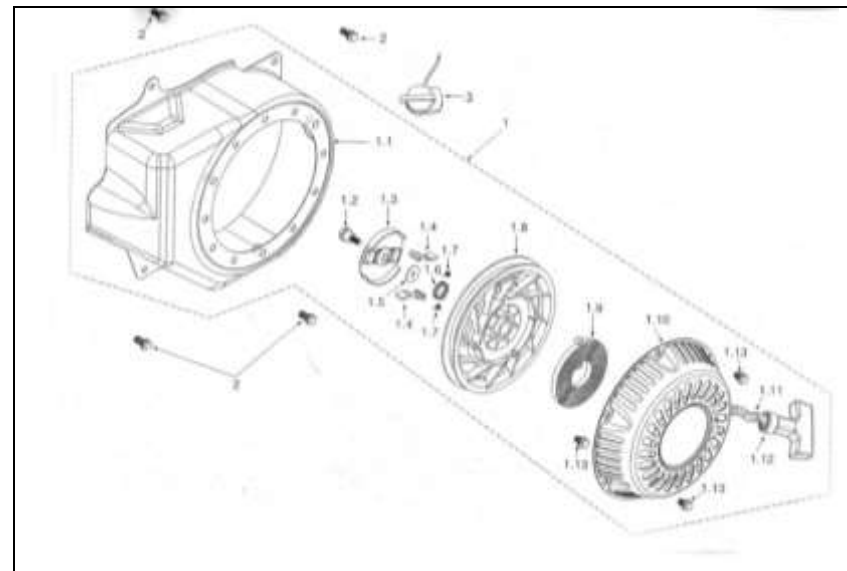
1. Remove the Spark Plug
2. Clean the carbon deposits
3. Measure the gap – it should be 0.6-0.7 mm
4. If necessary, replace the spark plug

Note: Always use genuine spare parts only.



7-2	Seal Oil Plug	3-7.2
-----	---------------	-------

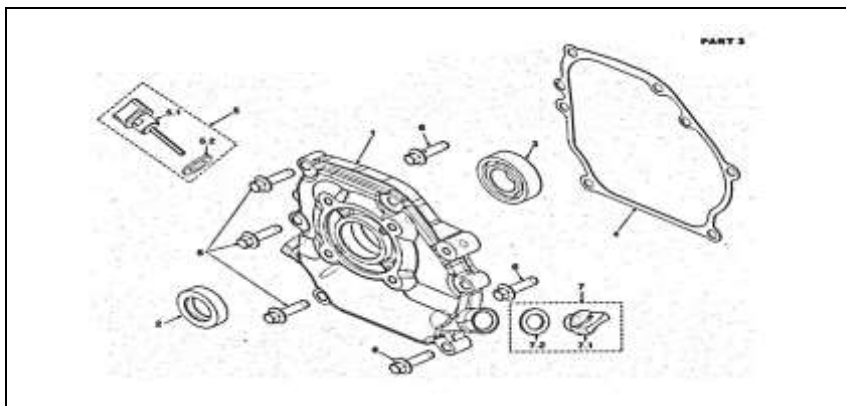
Recoil Starter



Sl. No	Part Name	Part No
1	Recoil Starter Assembly (Without fan Cover)	4-1
1-1	Fan cover	4-1.1
1-2	Pivot bolt M5 x 17	4-1.2
1-3	Ratchet guide	4-1.3
1-4	Ratchet	4-1.4
1-5	Washer - recoil 5x17x0.5	4-1.5
1-6	Friction Spoil 16x1	4-1.6
1-7	Ratchet Spring 5.5x0.2	4-1.7
1-8	Roller	4-1.8
1-9	Starter spring	4-1.9
1-10	Starter cover	4-1.10

Sl. No	Part Name	Part No
8	Bolt 6 x 25	2-8
9	Tools	2-9
9.1	Wrench, Spark plug	2-9.1
9.2	Handle	2-9.2

Crankcase Cover Parts



Sl. No	Part Name	Part No
1	Crankcase cover	3-1
2	Oil Seal 25x41.25x6	3-2
3	Ball Bearing 6205	3-3
4	Gasket crankcase	3-4
5	oil gauge assembly	3-5
5-1	Oil Gauge	3-5.1
5-2	seal-oil gauge	3-5.2
6	Bolt M8 x 30	3-6
7	Oil Plug assembly	3-7
7-1	Oil plug	3-7.1

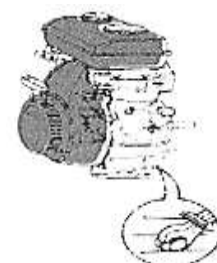
STORAGE



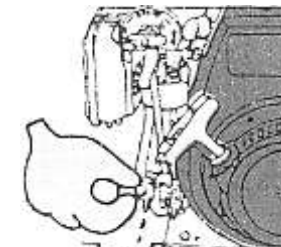
1. Drain the fuel from 2 fuel tanks



3. Remove the Oil Filter cap



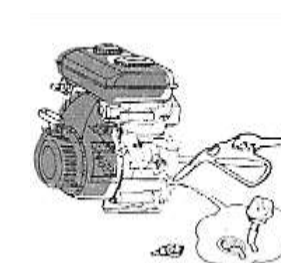
5. Close the oil drain bolt and tighten it



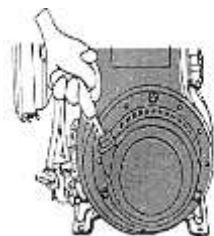
2. Drain fuel from Carburetor



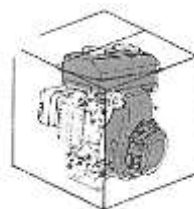
4. Remove the drain bolt and drain the oil



6. Fill new recommended oil to the max level



7. Pull the recoil starter slowly until resistance is left



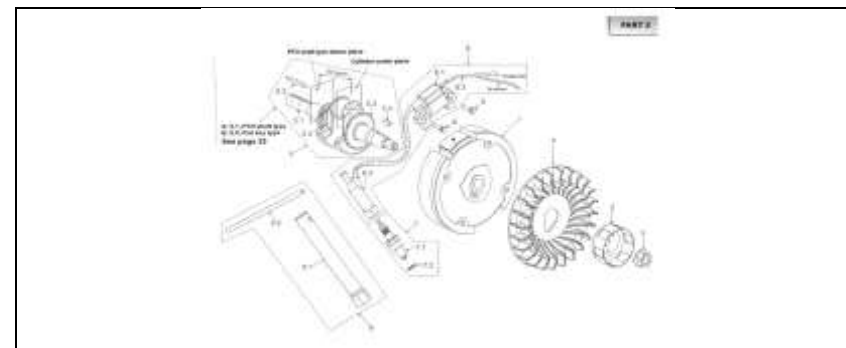
8. Pack it in a closed box and store it.

TECHNICAL SPECIFICATIONS

	KK-GE-100	KK-GE-200	KK-GE-160
Engine Type	4-Stroke, Air-cooled, 1-Cylinder, Side Valve		
Displacement	98 cc	196 cc	163 cc
Bore x Stroke	52 x 46 mm	68 x 54 mm	68 x 45 mm
Compression Ratio	4.8 : 1	4.5 : 1	6 : 1
Fuel	Petrol Start – Kerosene Run		
Rated Power	0.7kW @ 3600 RPM	2.6 kW @ 3600 RPM	2.4 kW @ 3600 RPM
Ignition System	Non-contact TCI		
Ignition Timing	20° BTDC		
Air Cleaner	Semi-dry, oil bath, dual, double silent and cyclone type		
Kerosene Tank	1.3 L	3.6 L	3.6 L
Petrol Tank	100 ml	150 ml	150 ml
Lube Oil Tank	0.3 L	0.6 L	0.6 L
PTO Shaft	Keyway and internal		
PTO Shaft Rotation	Counter clockwise from drive's end		
Dry Weight	10.5 Kg	18 Kg	15 Kg

Please note that KK-GE-100/160/200 are all BIS: ISI certified.

Crankshaft (Oil Sensor)



Sl. No	Part Name	Part No
1	Fly Wheel Assembly	2-1
2	Fly Wheel Fan	2-2
3	Starter Sleeve	2-3
4	Nut Fly wheel Assembly	2-4
5	Crankshaft Assembly.	2-5
5-1	Crank Shaft	2-5.1
5-2	Timing Gear	2-5.2
5-3	Governor Gear	2-5.3
5-4	Woodruff key	2-5.4
5-5	Flat Key	2-5.5
6	Ignition Coil Assembly	2-6
6-1	Ignition Coil	2-6.1
6-2	Stop lead	2-6.2
6-3	Spark Plug Cap	2-6.3
7	Spark Plug Assembly.	2-7
7-1	Spark plug	2-7.1
7-2	Washer, Spark Plug	2-7.2

Sl. No	Part Name	Part No
11	Set pin 8x14	1-11
12	Centrifugal gear (set)	1-12
12-1	Washer, slip cap 6x15x0.5	1-12.1
12-2	Centrifugal gear Assembly	1-12.2
12-2-1	centrifugal gear	1-12.2.1
12-2-2	Centrifugal block	1-12.2.2
12-2-3	pin, centrifugal block	1-12.2.3
12-3	Centre axis	1-12.3
12-4	Clip centre axis	1-12.4
12-5	Slip cap	1-12.5
13	Oil sensor Assembly	1-13
13-1	Oil sensor Body	1-13.1
13-2	O-Ring 17 x 2	1-13.2
13-3	O-Ring 11 x 2	1-13.3
13-4	Nut M10	1-13.4
14	Bolt M6 x 10	1-14
15	Bolt M6 x 14	1-15
16	Bolt M6 x 12	1-16
17	Bolt M6 x 20	1-17
18	Rubber wire hoop	1-18
19	Washer Slip Cap 6x15x0.5	1-19

TROUBLE SHOOTING

The engine does not start:

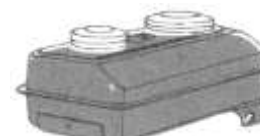
1. Is the Engine SWITCHED – OFF?



2. Check Engine OIL level. Is it low?



3. Check both fuel levels



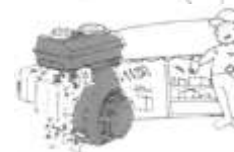
4. Is the fuel reaching the carburetor?



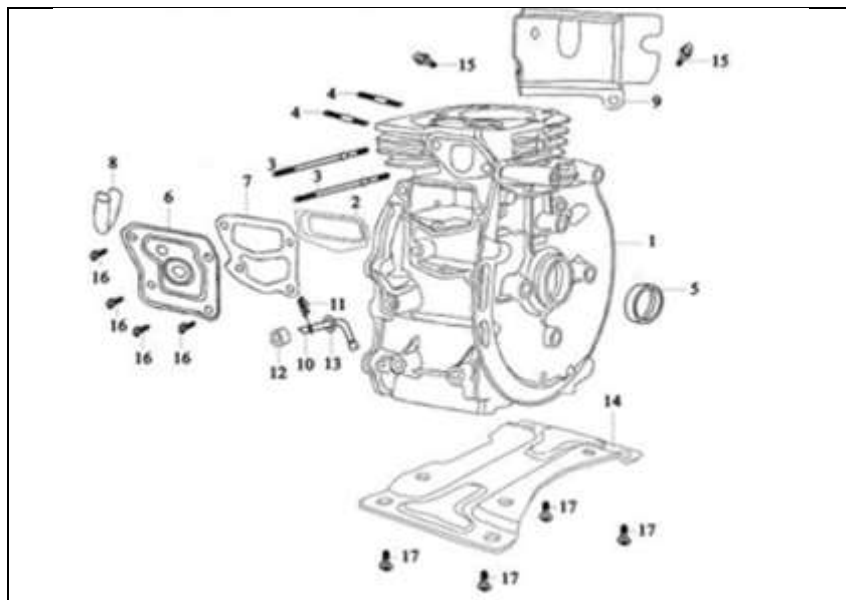
5. Is there good spark in the Spark Plug?



6. If you are still not able to start it, please take the engine to the authorized dealer.

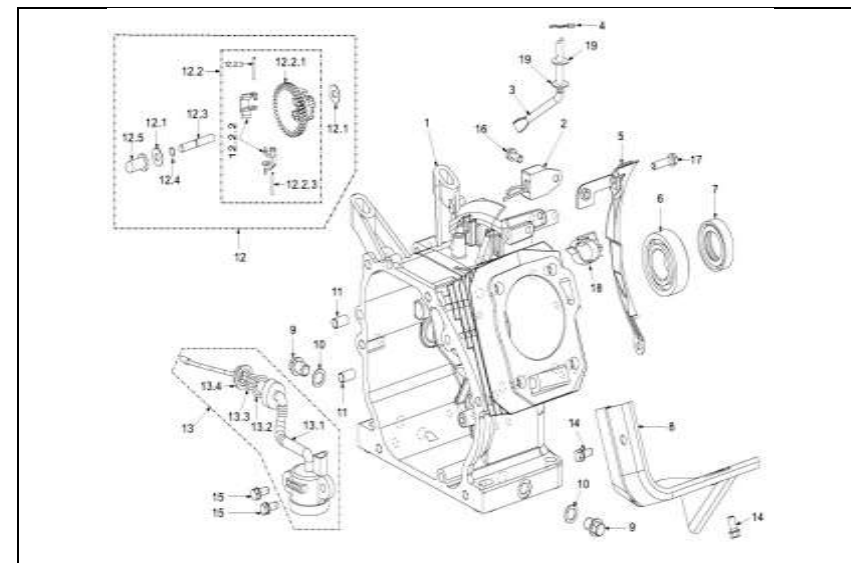


PARTS DIAGRAM & PARTS LIST-KK-GE-100 CRANKCASE ASSEMBLY



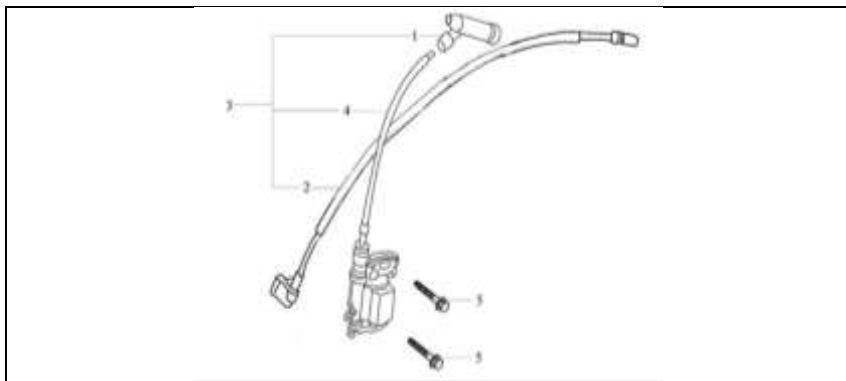
Sl No	Part No.	Description
1	1-1	Crankcase
2	1-2	Valve chamber clapboard sub-Assembly
3	1-3	Stud M5 × 118
4	1-4	Stud M6 × 52
5	1-5	Oil seal(17 × 30 × 6), crankshaft
6	1-6	Cover, oil filter
7	1-7	Gasket-Cover Oil Filter
8	1-8	Return pipe

PARTS DIAGRAM & LIST-KK-GE-160/200 CRANKCASE



Sl. No	Part Name	Part No
1	Crankcase Body	1-1
2	Current Amplifier	1-2
3	Sway bar	1-3
4	Split Clip	1-4
5	Side Plate	1-5
6	Ball Bearing 6205	1-6
7	Oil seal 25x41.25x6	1-7
8	Wind guide	1-8
9	Drain bolt	1-9
10	Washer Drain bolt	1-10

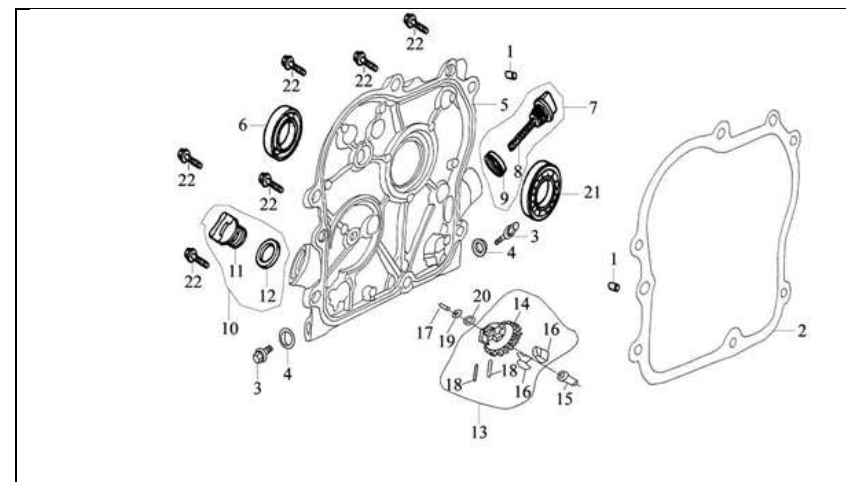
IGNITION COIL



Sl. No.	Part No.	Description
1	13-1	Cap, spark plug
2	13-2	Cable, engine stop
3	13-3	Ignition coil sub-Assembly
4	13-4	Ignition coil
5	13-5	Bolt M6x25

Sl No	Part No.	Description
9	1-9	Flow guard, lower
10	1-10	Sway bar
11	1-11	Keeper, sway bar
12	1-12	Oil seal, sway bar
13	1-13	Washer, sway bar
14	1-14	Bottom plate
15	1-15	Bolt M6 × 14
16	1-16	Bolt M5 × 10
17	1-17	Bolt M8 × 14
18	1-18	Oil Sensor

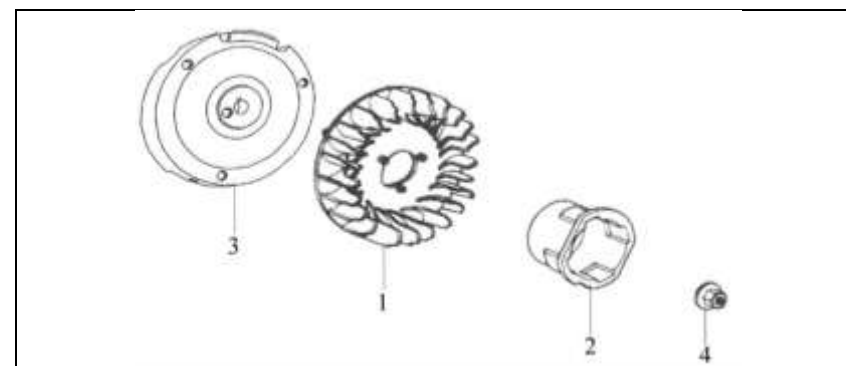
CRANKCASE COVER ASSEMBLY



SI No	Part No.	Description
1	2-1	Set pin $\phi 8 \times 14$
2	2-2	Gasket, crankcase
3	2-3	Drain plug
4	2-4	Washer -Drain Plug
5	2-5	Crankcase cover
6	2-6	Oil seal($17 \times 30 \times 6$), crankshaft
7	2-7	Dipstick sub-Assembly
8	2-8	OIL Dipstick
9	2-9	Seal, dipstick
10	2-10	Oil plug sub-Assembly
11	2-11	Oil plug
12	2-12	Seal, oil plug
13	2-13	Driven gear sub-Assembly, governor
14	2-14	Driven gear, governor
15	2-15	Sliding sleeve
16	2-16	Flyweight
17	2-17	Governing shaft
18	2-18	Pin, flyweight
19	2-19	Snap ring
20	2-20	Washer, driven gear
21	2-21	Bearing 6203
22	2-22	Bolt $M6 \times 29$

SI No.	Part No.	Description
8	11-8	Positioning plate
9	11-9	Spring, governor
10	11-10	Wave washer
11	11-11	Washer
12	11-12	Supporting plate unit
13	11-13	Pressure plate
14	11-14	Nut M6
15	11-15	Bolt M5x25
16	11-16	Bolt M6x14
17	11-17	Bolt M5x16

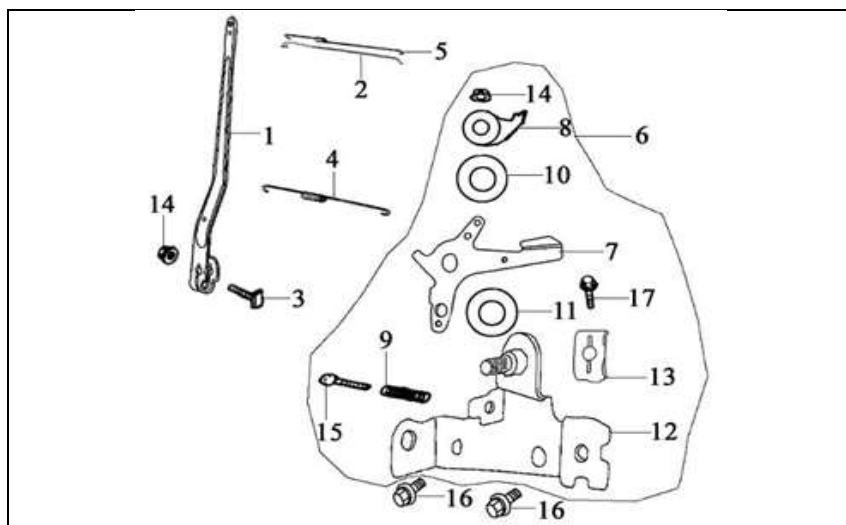
FLYWHEEL



SI No.	Part No.	Description
1	12-1	Fan, flywheel
2	12-2	Starter Sleeve /flange
3	12-3	Flywheel
4	12-4	Nut M12x1.25

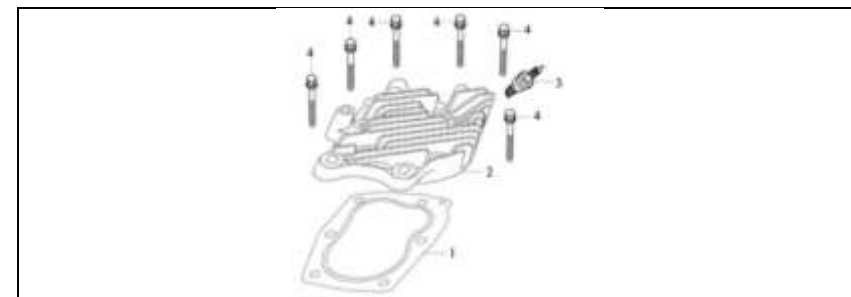
SI No.	Part No.	Description
14	10-14	Bolt M6x10
15	10-15	Bolt M6x14
16	10-16	Ratchet Spring

GOVERNING CONTROL SYSTEM



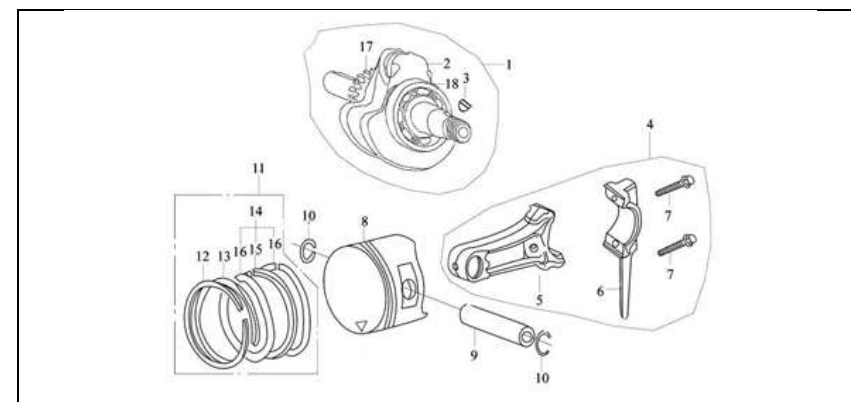
SI No.	Part No.	Description
1	11-1	Governor arm
2	11-2	Pull-rod, governor
3	11-3	Lock bolt
4	11-4	Return spring
5	11-5	Assistant spring, governor
6	11-6	Mount, governor
7	11-7	Handle

CYLINDER COVER



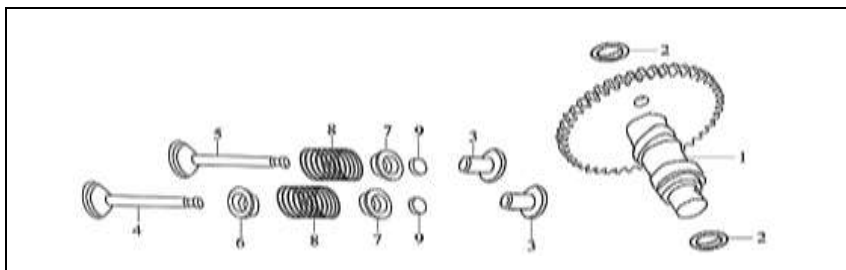
SI No.	Part No.	Description
1	3-1	Gasket, cylinder head
2	3-2	Cylinder cover
3	3-3	Spark plug
4	3-4	Bolt M6x35

CRANKSHAFT, PISTON & CONNECTING ROD

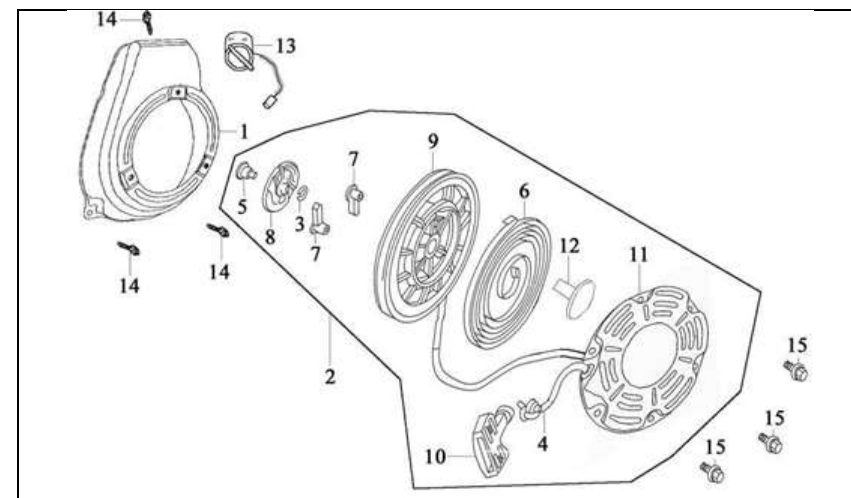


SI No.	Part No.	Description
1	4-1	Crankshaft sub-Assembly
2	4-2	Crankshaft
3	4-3	Woodruff key
4	4-4	Connecting rod
5	4-5	Shank
6	4-6	Cap connecting rod
7	4-7	Bolt M5x24
8	4-8	Piston
9	4-9	Piston pin
10	4-10	Circlip, piston pin
11	4-11	Piston ring set
12	4-12	N/A
13	4-13	
14	4-14	
15	4-15	
16	4-16	
17	4-17	Timing driving gear
18	4-18	Bearing 6203
19	4-19	Key(pulley) 5x5x35

COMBINATION OF CAMSHAFT & VALVE

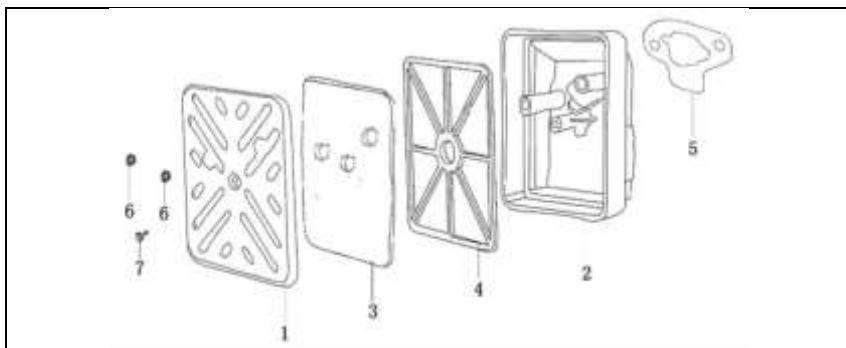


RECOIL STARTER



SI No.	Part No.	Description
1	10-1	Fan Cover
2	10-2	Recoil starter Assembly
3	10-3	Friction spring
4	10-4	Rope
5	10-5	Shoulder screw
6	10-6	Recoil Spring/Spiral spring
7	10-7	Ratchet
8	10-8	Guide Plate
9	10-9	Rope Reel
10	10-10	Starter Handle
11	10-11	Starter Cover
12	10-12	N/A
13	10-13	Engine switch

AIR CLEANER ASSEMBLY



SI No.	Part No.	Description
1	8-1	Cover, air cleaner
2	8-2	Housing, air cleaner
3	8-3	Foam, air cleaner
4	8-4	Bracket, air cleaner
5	8-5	Gasket, air cleaner
6	8-6	Nut M5
7	8-7	Self-tapping screw ST4x10

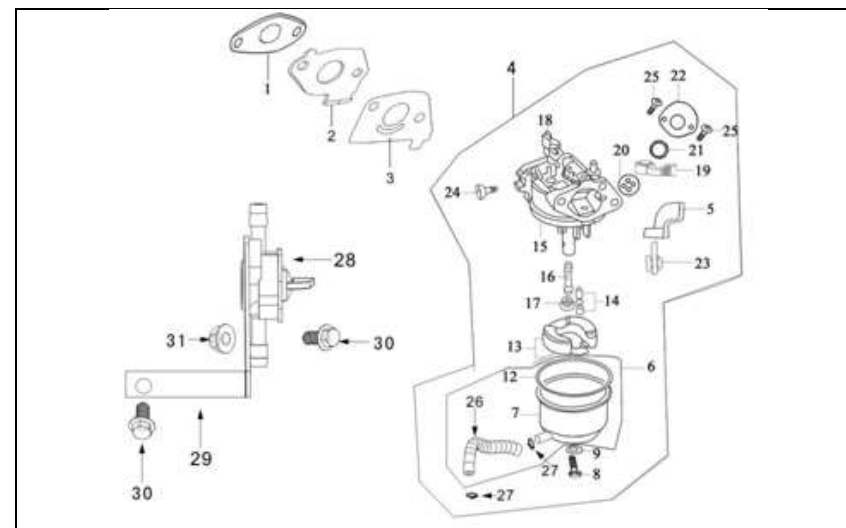
MUFFLER

SI No.	Part No.	Description
1	9-1	Gasket, exhaust port
2	9-2	Exhaust muffler
3	9-3	Nut M6
4	9-4	Muffler Protector (Wire Net)

COMBINATION OF CAMSHAFT & VALVE

SI No.	Part No.	Description
1	5-1	Camshaft
2	5-2	Washer, camshaft
3	5-3	Tappet
4	5-4	Intake valve
5	5-5	Exhaust valve
6	5-6	Oil seal, valve stem
7	5-7	Spring seat, valve
8	5-8	Valve spring
9	5-9	Cap (Valve)

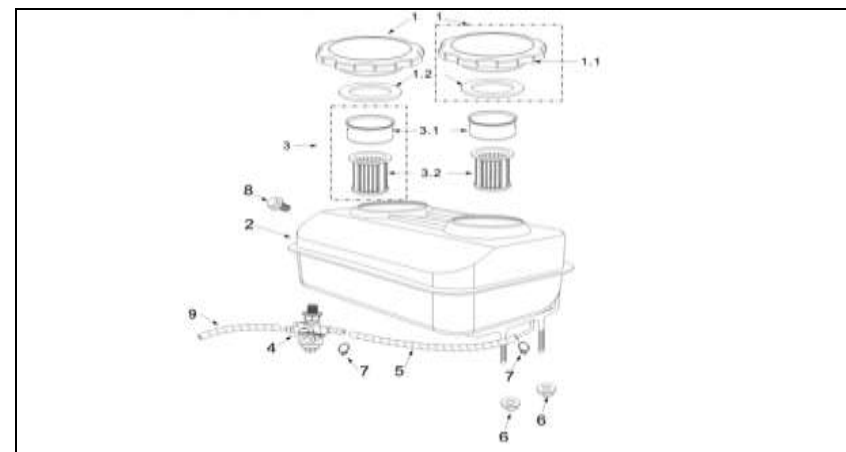
CARBURETOR ASSEMBLY



S/N	Part No.	Description
1	6-1	Gasket, intake port
2	6-2	Connecting block
3	6-3	Gasket, carburetor
4	6-4	Carburetor Assembly
5	6-5	Choke lever
6	6-6	Float chamber sub-Assembly
7	6-7	Float chamber
8	6-8	Screw
9	6-9	Seal, screw
12	6-12	Gasket, float chamber
13	6-13	Float sub-Assembly
14	6-14	Needle valve
15	6-15	Mixture chamber body
16	6-16	Main nozzle
17	6-17	Main jet
18	6-18	Throttle unit
19	6-19	Throttle lever
20	6-20	Airproof washer
21	6-21	Washer
22	6-22	Cover
24	6-24	Idle adjusting screw
25	6-25	Screw M4x6
26	6-26	Tubing
27	6-27	Pipe clamp
28	6-28	Oil switch
29	6-29	A mounting block
30	6-30	Bolt M6x14

31	6-31	Nut M6
----	------	--------

FUEL TANK ASSEMBLY



SI No.	Part No.	Description
1	7-1	Fuel filler cap sub-Assembly
1.1	7-1.1	Fuel filler cap
1.2	7-1.2	Packing ring
2	7-2	Fuel tank
3	7-3	Fuel Filter(Upper)
4	7-4	Fuel Cock
5	7-5	Fuel Tube 200mm
6	7-6	Nut M6
7	7-7	Pipe clamp
8	7-8	Bolt M4x6
9	7-9	Fuel Tube 130mm