

Wide Range of Products for Every Need



For more information give **MISSED CALL: 07676065555**



Many of our products have BIS: ISI certification.



User manual

(Engine-Petrol Start Kerosene Run)



All '**FarmBoy**' products are sold without any warranty or guarantee. Please satisfy yourself before buying this product. No returns, exchanges or refunds allowed.

Note: The purchase is not contingent upon a product demonstration. The purchaser shall satisfy himself with the product, including any product demonstration or verification of any function, before buying. KisanKraft Limited or its authorized dealers, including online sellers, shall not be liable to give any on-site demonstration after purchase of any of the product.

KisanKraft Limited

(Formerly known as KisanKraft Machine Tools Pvt. Ltd)

Sri Huchhanna Tower, #4, 1st Main, 7-A Cross, Maruthi Layout, Dasarahalli, HAF Post, Hebbal, Bangalore 560024, Karnataka, INDIA

- ♦ Bangalore (HO) ♦ Ahmedabad ♦ Bhopal ♦ Bhubaneswar ♦ Coimbatore ♦
- ♦ Jammu ♦ Guwahati ♦ Shimla ♦ Hubli ♦ Hyderabad ♦
- ♦ Jaipur ♦ Karnal ♦ Kolkata ♦ Lucknow ♦ Pune ♦ Raipur ♦

CONTENTS

BEFORE GETTING STARTED	3
SAFETY INSTRUCTIONS	3
ENGINE COMPONENTS	4
OPERATION	5
Pre-Operation Checks	5
Starting the Engine (COLD START):	7
Starting the Engine (HOT START):	9
Stopping the Engine:.....	10
MAINTENANCE	11
STORAGE	13
TECHNICAL SPECIFICATIONS	14
TROUBLE SHOOTING	15
PARTS DIAGRAM & LIST-FB-GE-161/201	16

KisanKraft has a large range of products to serve the farmers. A list of our products is given below:

Brush Cutters and Accessories Brush Cutter/Power Weeder Backpack Brush Cutter Tea Pruner Pole pruner with Engine Reaper Attachment Blades-Circular Blades (2 & 3 points) Baffle Nylon Rope Tap & Go Chainsaws Petrol Chainsaw Electric Chainsaw Chain Sharpening Machine Engines and Water Pumps Engine –Diesel-(Horizontal) Engine –Diesel(Vertical) Engine-Kerosene Water Pump with Petrol Engine Water Pump with Kerosene Engine Water Pump with Diesel Engine Hand Tools Secateurs Folding Saw Garden Rake Garden Shovel Hedge Shear Lopper Telescopic Hedge Shear Telescopic Lopping Shear Tree Pruner Telescopic Steel Pipe & Fruit Picker Bag Sheep Shear Garden Tools Electric Pressure Washer Hedge Trimmer Lawn Mower (Electric, Petrol & Manual) Leaf Blower	Cultivators and Accessories Petrol and Diesel Sprayers and Accessories Battery Sprayer Portable Power Sprayer Trolley Sprayer Manual Knapsack Sprayer Manual Pressure Sprayer Rose Cans Hose Crimping Machine HTP Sprayer HTP Delivery Hose HTP Hose Reel HTP Stand HTP Gun / Lance(Brass Rod) Knapsack Power Sprayer Mister / Duster / Granuel Spreader HTP Sprayer Set with Diesel Engine HTP Sprayer Set with Kerosene Engine Fogging Machine Milking Machine Wood Shredder Fodder Ensiling Chaff Cutter Fodder Grinder Chaff Cutter Fodder Mini Chaff Cutter Harvester Maize Sheller Maize Sheller + Dehusker Maize Combine Harvester Onion Digger Carlotti Italy Tea Leaf Harvester Sugarcane Combine Harvester Sugarcane Leaf Stripper Transplanter and Post Hole Digger Paddy Transplanter (2 & 8 Rows) Transplanter-Vegetable & Tobacco Post Hole Digger(4" to 14" Augers)
--	---

Sl. No	Part Name	Part No
1	Fuel tank Assembly	12-1
1.1	Fuel tank cover Assembly.	12-1.1
1-1.1	Fuel tank cover	12-1.1.1
1-1.2	Rubber seal, Fuel tank cover 38x56x3	12-1.1.2
1.2	Fuel filter Assembly	12-1.2
1-2.1	Support, Fuel filter	12-1.2.1
1-2.2	Fuel filter	12-1.2.2
1.3	Fuel tank	12-1.3
1.4	Fuel joint Assembly	12-1.4
1-4.1	Nut M10	12-1.4.1
1-4.2	Fuel joint	12-1.4.2
2	Fuel tube 8.5x4.5	12-2
3	Clip Fuel tube	12-3
4	Bolt M6 x 28	12-4
5	Nut M6	12-5
6	Fuel joint	12-6
7	Bracket	12-7
8	Fuel tube 8.5x4.5	12-8

BEFORE GETTING STARTED

Thank you for your purchase and use of our products. In order to avoid accidents or injury, **please read this manual carefully** before using the machine. After reading, preserve it for further reference.

SAFETY INSTRUCTIONS

- Please do not use this engine inside an enclosed area. Ensure adequate ventilation while Engine is in operation.
CAUTION: Exhaust contains POISONOUS Carbon Mono Oxide gas



- To prevent fire hazard, please keep the Engine in operation at least 1-meter (3 feet) away from Combustible or Inflammable materials, buildings and equipment.



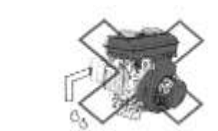
- When refueling you must STOP the Engine. Please do not smoke near Engine. Wipe the spilled fuel after refueling.
CAUTION: Spilled fuel is a fire hazard.



- Do NOT cover the Engine when in operation!



- Do NOT connect any pipe to exhaust muffler!



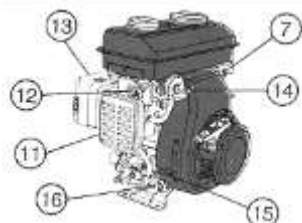
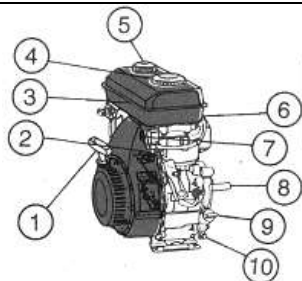
- Do NOT tilt the Engine more than 21 degrees.



ENGINE COMPONENTS

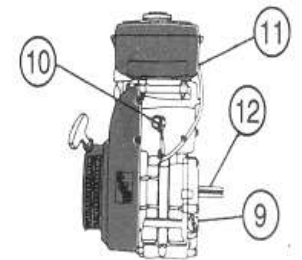
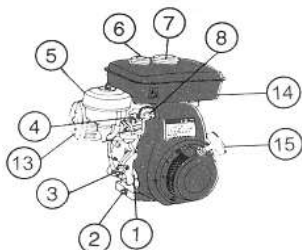
FB-GE-161

1. Recoil Starter
2. Engine Switch
3. Fuel Tank
4. Kerosene Tank Cap
5. Petrol Tank Cap
6. Spark Plug
7. Oil Alert Lamp
8. PTO Shaft
9. Engine Oil Filter Cap
10. Engine Oil Drain Bolt
11. Air Cleaner
12. Choke
13. Muffler
14. Fuel Cock
15. Throttle Weaver
16. Drain Cock



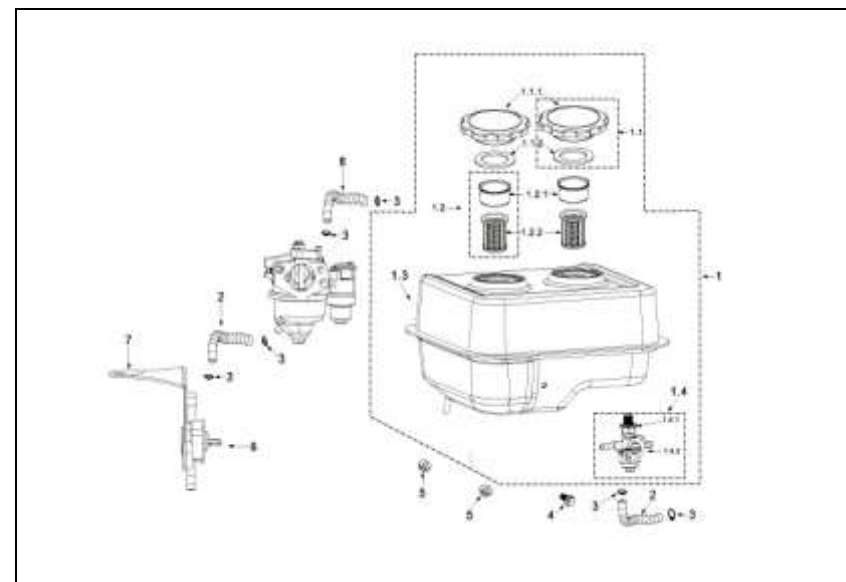
FB-GE-201

1. Throttle Lever
2. Engine Drain Bolt
3. Drain Cock
4. Choke Rod
5. Air Cleaner
6. Petrol Tank Cap
7. Kerosene Tank Cap
8. Fuel Cock
9. Engine Oil Filter Cap
10. Engine Switch
11. Spark Plug
12. P.T.O. Shaft
13. Muffler
14. Fuel Tank
15. Recoil Starter



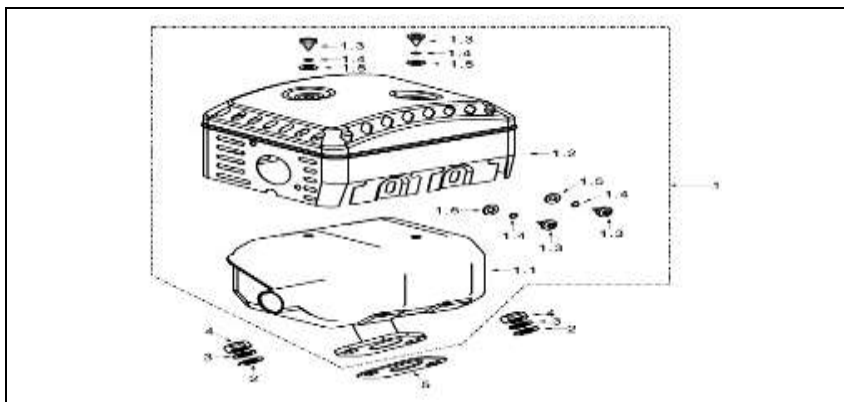
Sl. No	Part Name	Part No
1	Muffler Assembly	11-1
1.1	Muffler body	11-1.1
1.2	Protector Muffler -A	11-1.2
1.3	Screw M5 x 8	11-1.3
1.4	Spring washer $\Phi 5$	11-1.4
1.5	Washer $\Phi 5$	11-1.5
2	Washer $\Phi 8$	11-2
3	Spring $\Phi 8$	11-3
4	Nut M8	11-4
5	Gasket (Exhaust Part)	11-5

Fuel Tank-kerosene Engine



Sl. No	Part Name	Part No
1	Air Cleaner Assembly	10-1
1-1	Air Cleaner Seat Ass.	10-1.1
1-1.1	Air Cleaner seat	10-1.1.1
1-1.2	Seal Ring	10-1.1.2
1-1.3	Cover board	10-1.1.3
1-1.4	Screw M4 x 12	10-1.1.4
1-2	Filter Assembly	10-1.2
1-2.1	Foam Filter	10-1.2.1
1-2.2	Papery Filter	10-1.2.2
1-2.3	Rubber Fixer	10-1.2.3
1-2.4	Decal Washer	10-1.2.4
1.3	Filter Case	10-1.3
1.4	Butter Fly nut M6	10-1.4
1.5	Seal Ring 32x47x3	10-1.5
1.6	Air duck	10-1.6
2	Nut M6	10-2

Muffler Parts



OPERATION

Pre-Operation Checks

Oil Level:

Please check the Engine Oil Level by putting the engine on a flat surface

If the oil level looks low, please check the Oil Level.
Add oil to the recommended level

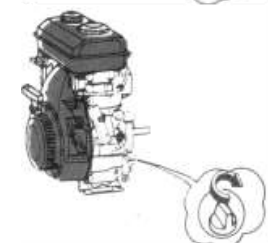
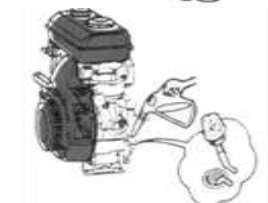
Remember to tighten the Oil cap!

Recommended Engine Oil

If the OIL level in crankcase falls below a safe limit, then Oil Alert level system will automatically turn off the Engine.

NOTE: The Engine will not start if the Oil Alert Level System has turned off the Engine.

You will need to fill OIL to the recommended level, before you can restart the Engine.



SAE 10W-40 or SAE 20W-40
API Classification: SF Minimum



Fuel Level:

Check the fuel level before starting the Engine.

Add fuel, if the level is low
Fill fuel to the shoulder of fuel filter.

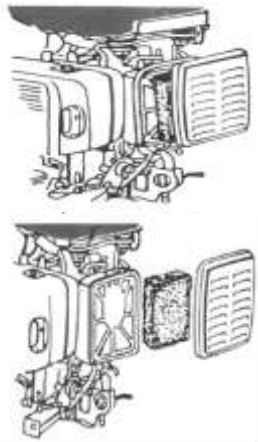
CAUTION:

- (1) Do not put Kerosene in Petrol tank, otherwise Engine will be very hard to start.
- (2) Do not put Petrol with Oil-mixed in it.
- (3) Do not put dirty, contaminated fuel

Air Filter:

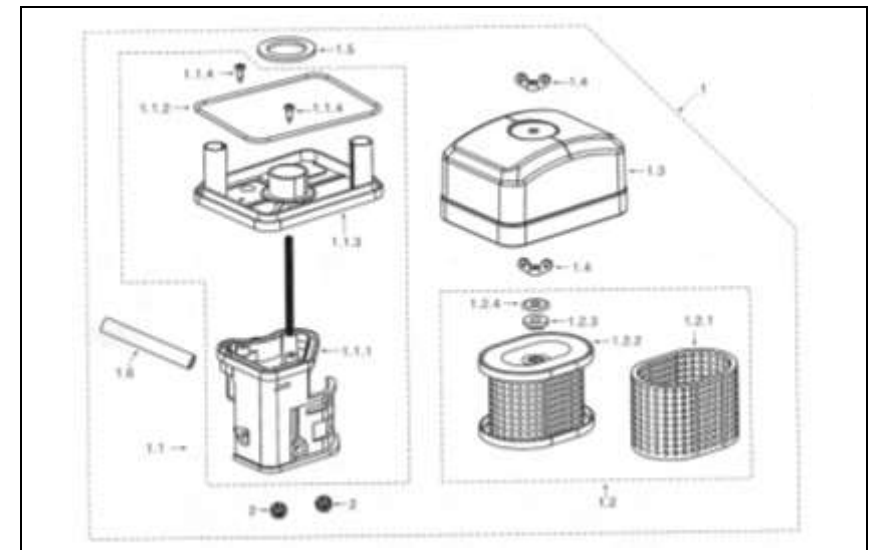
Open Air-cleaner cover and remove the air cleaner element.

Check for dust/dirt in the air filter.
If it is dirty you should clean it as shown below.

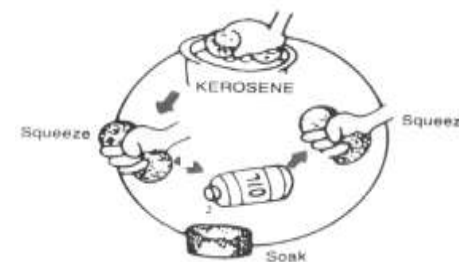


Sl. No	Part Name	Part No
1-22	Fuel Valve	9-1.22
1-23	Handle Bar	9-1.23
1-24	Spring Washer- big	9-1.24
1-25	Upper cover	9-1.25
1-26	Spring washer-small 3	9-1.26
1-27	Screw M3x7	9-1.27
2	Steel gasket	9-2
3	Gasket carburetor	9-3
4	Block Carburetor	9-4
5	Gasket, inlet port	9-5

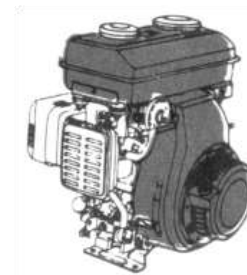
Air Cleaner (Hemi -Dry type)



Sl. No	Part Name	Part No
1-3.1	Chock Valve cap	9-1.3.1
1-3.2	Chock Valve axis	9-1.3.2
1-3.3	Chock Valve	9-1.3.3
1-4	Measure hole Assembly idle speed	9-1.4
1-4.1	Measure hole, idle speed	9-1.4.1
1-4.2	O-ring 4.7x1	9-1.4.2
1-5	Adjustment Screw Assembly mixture ratio	9-1.5
1-5.1	Adjustment screw, mixture ratio M4x12	9-1.5.1
1-5.2	Spring	9-1.5.2
1-6	Adjustment screw Idle speed	9-1.6
1-7	Fuel Floater	9-1.7
1-8	Pin Fuel Floater	9-1.8
1-9	Needle Valve Assembly	9-1.9
1-9.1	Needle Valve seat	9-9.1
1-9.2	Needle Valve	9-9.2
1-9.3	Spring, Needle valve	9-9.3
1-10	Main Jet	9-1.10
1-11	Main Measuring hole	9-1.11
1-12	Fuel inlet Tube	9-1.12
1-13	Rubber seal (Fuel cup)	9-1.13
1.14	Fuel cup	9-1.14
1-15	Fuel drain plug	9-1.15
1-16	Gasket fuel drain plug	9-1.16
1-17	Tighten bolt (Fuel cup)	9-1.17
1-18	O-ring 11x1.5	9-1.18
1-19	Hand grip chock valve Assembly	9-1.19
1-20	Sediment cup	9-1.20
1-21	O-ring 21x2	9-1.21

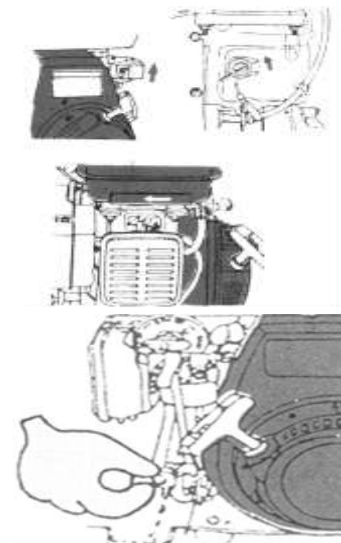


Clean air filter element and refit it in the Air-filter of the engine.

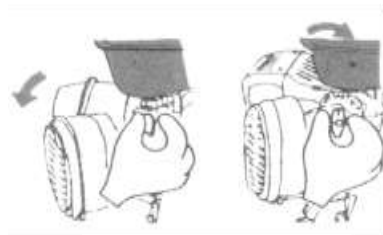


Starting the Engine (COLD START):

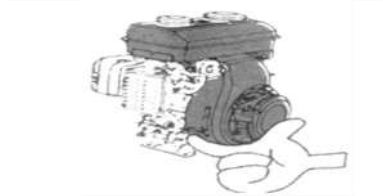
1. Turn the Engine switch to ON position
2. Put the choke in the shown position.
3. Turn the Drain Cock to ON position and drain the Kerosene from the carburetor.
4. Turn the Drain Cock to OFF position after you have drained the Kerosene.
5. Return the Kerosene to the Kerosene Tank.



6. Turn the Fuel Cock to START / ON position



7. Increase the throttle (accelerator) level slightly
8. Make sure that there is no (minimum) load attached to the Engine



9. Pull the starter grip, until you feel the resistance
10. Then pull the rope fast
11. Do not leave the rope. Do not allow rope to snap back.
12. Return the rope slowly, by hand, to the recoil starter



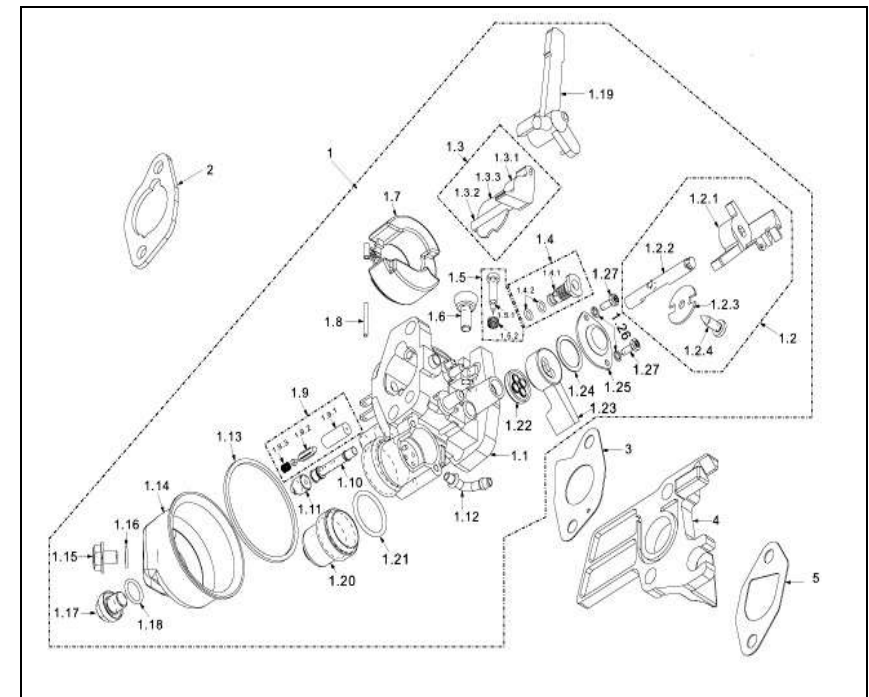
13. Turn the fuel cock to RUN position.



14. Close the choke as indicated on the Engine.

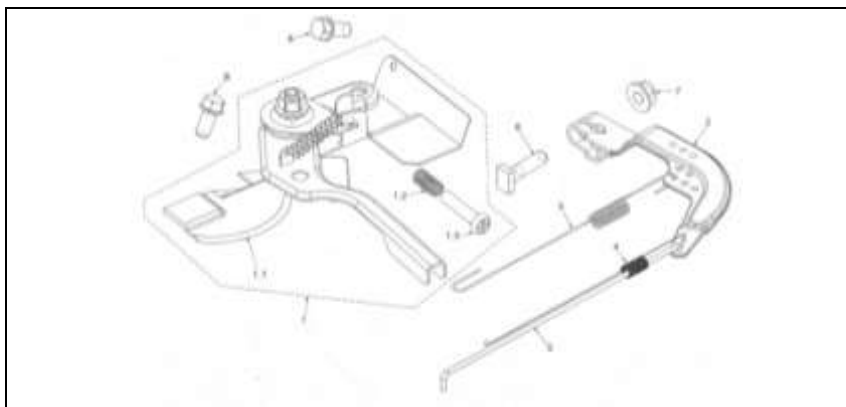


Carburetor Parts



Sl. No	Part Name	Part No
1	Carburetor Assembly	9-1
1-1	Carburetor Body oil	9-1.1
1-2	Throttle Valve Assembly	9-1.2
1-2.1	Throttle Valve Cap	9-1.2.1
1-2.2	Throttle Valve axis	9-1.2.2
1-2.3	Throttle Valve	9-1.2.3
1-2.4	Screw M4x12	9-1.2.4
1-3	Chock Valve Assembly	9-1.3

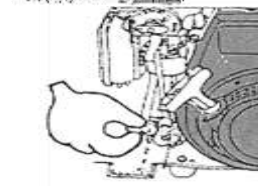
Speed Adjustment Base Parts



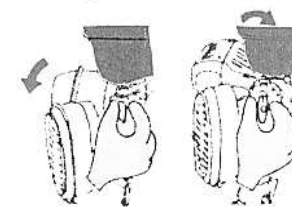
Sl. No	Part Name	Part No
1	Speed Adjustment base part	8-1
1-1	Speed Adjustment Base Ass.	8-1.1
1-2	Adjustment Spring	8-1.2
1-3	Adjustment Screw	8-1.3
2	Speed Adjustment arm	8-2
3	Return Spring	8-3
4	Fine Adjustment Spring	8-4
5	Pulling Rod	8-5
6	Quadrante bolt M6x21	8-6
7	Nut M6	8-7
8	Bolt M6 x 12	8-8

Starting the Engine (HOT START):

1. Turn the Engine switch to ON position
2. Close the choke as indicated on the Engine
3. Raise the throttle lever slightly
4. Make sure that there is no (minimum) load attached to the Engine.



5. Turn the Fuel Cock to RUN / ON position.



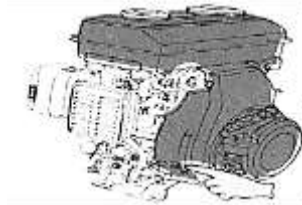
6. Pull the starter grip, until you feel the resistance
7. Then pull the rope fast.
8. Do not leave the rope. Do not allow the rope to snap back.



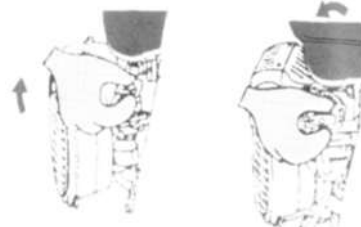
Return the rope slowly, by hand, to the recoil starter

Stopping the Engine:

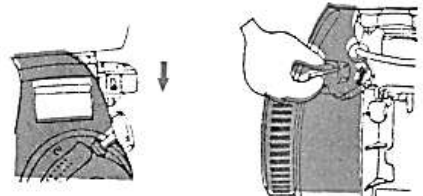
1. Move the throttle (accelerator) lever fully down.



2. Turn the Fuel Cock to STOP / OFF position

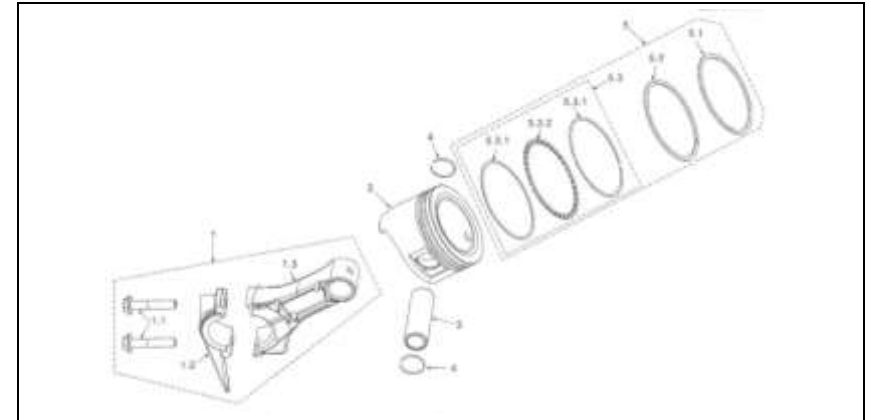


3. Turn the Engine switch to OFF position.



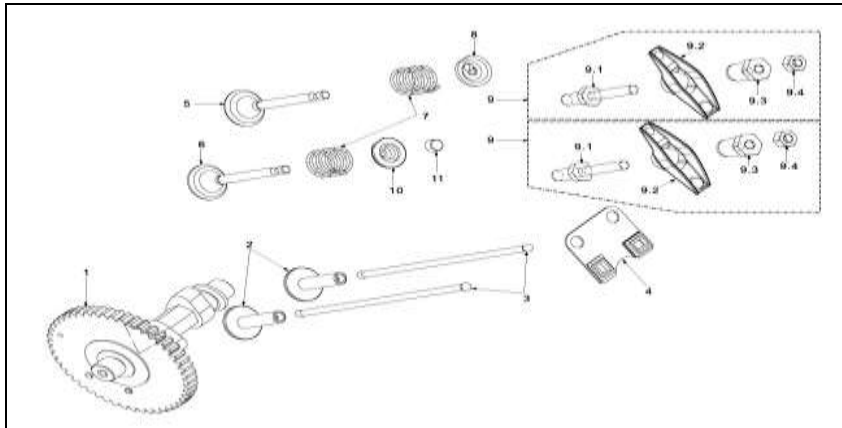
NOTE: In case of emergency, in order to stop the engine just turn the switch to OFF position.

Piston



Sl. No	Part Name	Part No
1	Connecting rod Assembly	7-1
1-1	Bolt connecting rod M7x35	7-1.1
1-2	Cover, connecting rod	7-1.2
1-3	Body, connecting rod	7-1.3
2	Piston	7-2
3	Piston Pin	7-3
4	Clip Piston Pin	7-4
5	Piston Ring Assembly	7-5
5-1	First air ring	7-5.1
5-2	Second air ring	7-5.2
5-3	Oil ring Ass.	7-5.3
5-3.1	Scraper ring	7-5.3.1
5-3.2	Set off ring	7-5.3.2

Cam Shaft



Sl. No	Part Name	Part No
1	Cam Shaft Assembly	6-1
2	Tappet	6-2
3	Pusher	6-3
4	Pusher guide	6-4
5	Intake Valve	6-5
6	Exhaust Valve	6-6
7	Valve Spring	6-7
8	Spring seat Intake Valve	6-8
9	Rocker Ass.	6-9
9-1	Stud Rocker Assembly	6-9.1
9-2	Rocker	6-9.2
9-3	Adjust Nut Sphere	6-9.3
9-4	Lock Nut	6-9.4
10	Spring Seat Exhaust Valve	6-10
11	Cap Exhaust valve	6-11

MAINTENANCE

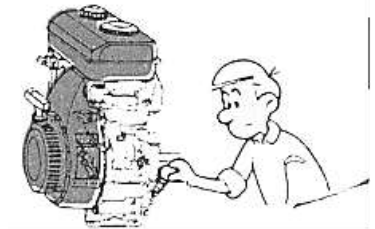
Item \ Period	Before Each Use	First Month	Every 3-Months	Every 6-Months	1-Year	3-Years
Engine Oil	Check	Change		Change		
Air Cleaner	Check		Clean			
Spark Plug				Check, Clean, Readjust		
Muffler					Clean	
Cylinder Head					Clean	
Fuel Filter & Fuel Pipe					Clean	Change
Valves					Check, Readjust	

Important:

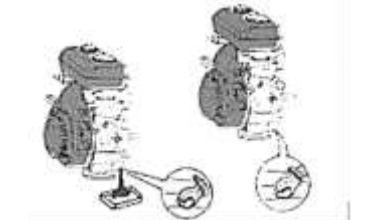
- Oil should be changed after first 20 hours of use. After that OIL should be changed every 100-hours of use.
- If you are in dusty environment, service more frequently
- Always use genuine spare parts and take it for servicing to authorized dealers.

Oil Change:

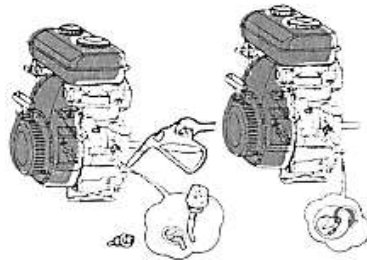
Remove Oil Filter cap



Remove the drain bolt, and drain the old oil.



1. Tighten the drain bolt.
2. Fill the new Recommended Oil to the maximum level (neck of the oil filler)
3. Tighten the Oil Filler cap.



Spark Plug:

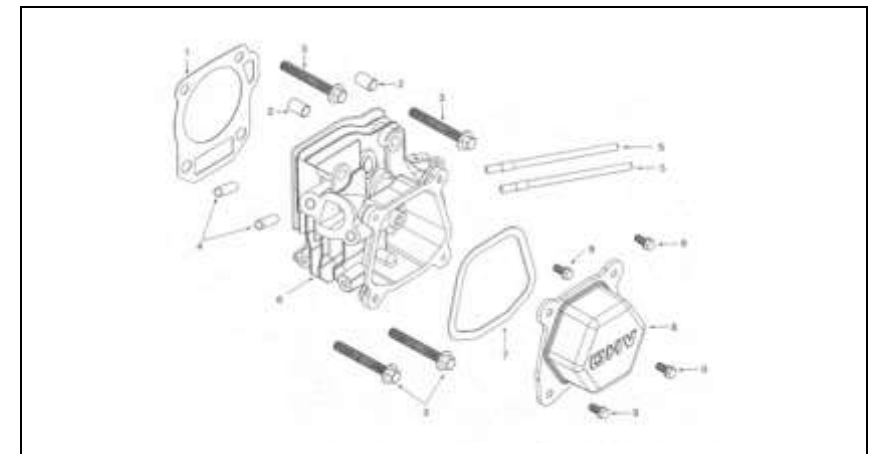
1. Remove the Spark Plug
2. Clean the carbon deposits
3. Measure the gap – it should be 0.6-0.7 mm
4. If necessary, replace the spark plug

Note: Always use genuine spare parts only.



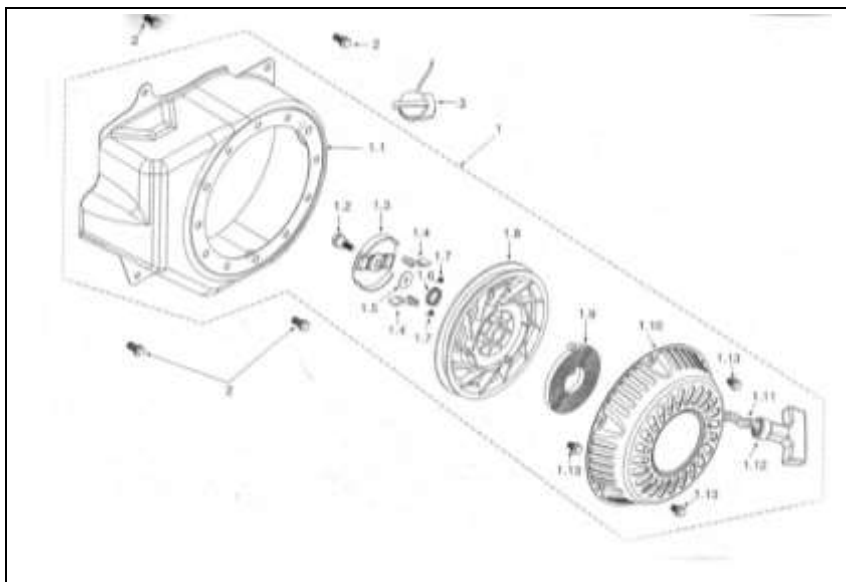
Sl. No	Part Name	Part No
1-11	Rope	4-1.11
1-12	Pulley handle	4-1.12
1-13	Bolt M6X8	4-1.13
2	Bolt M6x12	4-2
3	Engine switch	4-3

Cylinder Head



Sl. No	Part Name	Part No
1	Gasket Cylinder head	5-1
2	Set pin 10x14	5-2
3	Bolt M8 x 60, 22	5-3
4	Stud Exhaust M8 x 32	5-4
5	Stud Intake M6 x 113	5-5
6	Cylinder head Assembly	5-6
7	Gasket Cylinder head cover	5-7
8	Cylinder head cover	5-8
9	Bolt M6x12	5-9

Recoil Starter



Sl. No	Part Name	Part No
1	Recoil Starter Assembly (Without fan Cover)	4-1
1-1	Fan cover	4-1.1
1-2	Pivot bolt M5 x 17	4-1.2
1-3	Ratchet guide	4-1.3
1-4	Ratchet	4-1.4
1-5	Washer - recoil 5x17x0.5	4-1.5
1-6	Friction Spoil 16x1	4-1.6
1-7	Ratchet Spring 5.5x0.2	4-1.7
1-8	Roller	4-1.8
1-9	Starter spring	4-1.9
1-10	Starter cover	4-1.10

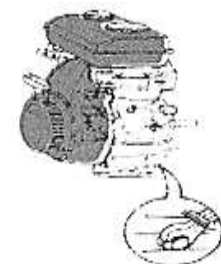
STORAGE



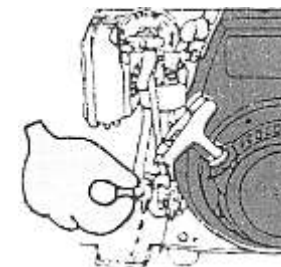
1. Drain the fuel from 2 fuel tanks



3. Remove the Oil Filter cap



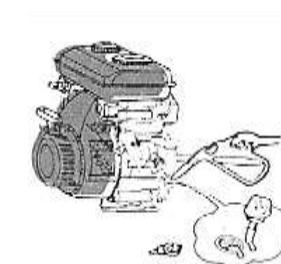
5. Close the oil drain bolt and tighten it



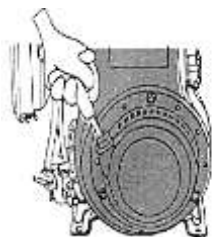
2. Drain fuel from Carburetor



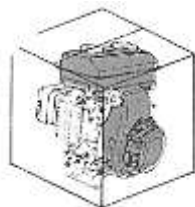
4. Remove the drain bolt and drain the oil



6. Fill new recommended oil to the max level



7. Pull the recoil starter slowly until resistance is left



8. Pack it in a closed box and store it.

TECHNICAL SPECIFICATIONS

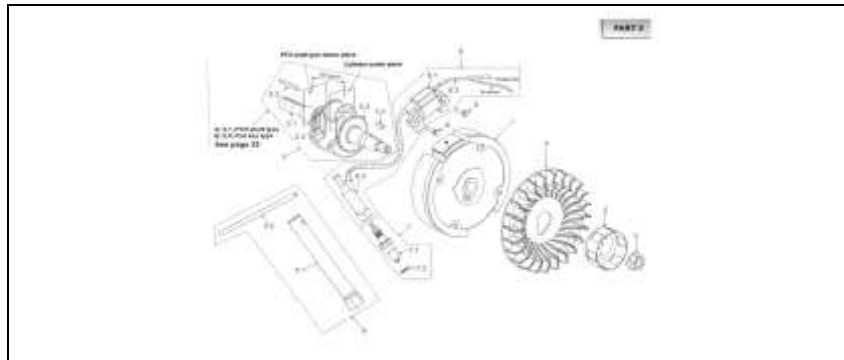
	FB-GE-201	FB-GE-161
Engine Type	4-Stroke, Air-cooled, 1-Cylinder, Side Valve	
Displacement	196 cc	163 cc
Fuel	Petrol Start – Kerosene Run	
Rated Power	3 kW (4.1 HP)	2.5 kW (3.3hp)
RPM	3600	
Ignition System	Non-contact TCI	
Ignition Timing	20° BTDC	
Air Cleaner	Semi-dry, oil bath, dual, double silent and cyclone type	
Kerosene Tank	4 L	3.8 L
Petrol Tank	0.4 L	0.2 L
Lube Oil Tank	0.7 L	0.6 L

Sl. No	Part Name	Part No
7-2	Washer, Spark Plug	2-7.2
8	Bolt 6 x 25	2-8
9	Tools	2-9
9.1	Wrench, Spark plug	2-9.1
9.2	Handle	2-9.2

Crankcase Cover Parts

Sl. No	Part Name	Part No
1	Crankcase cover	3-1
2	Oil Seal 25x41.25x6	3-2
3	Ball Bearing 6205	3-3
4	Gasket crankcase	3-4
5	oil gauge assembly	3-5
5-1	Oil Gauge	3-5.1
5-2	seal-oil gauge	3-5.2
6	Bolt M8 x 30	3-6
7	Oil Plug assembly	3-7
7-1	Oil plug	3-7.1
7-2	Seal Oil Plug	3-7.2

Crankshaft (Oil Sensor)

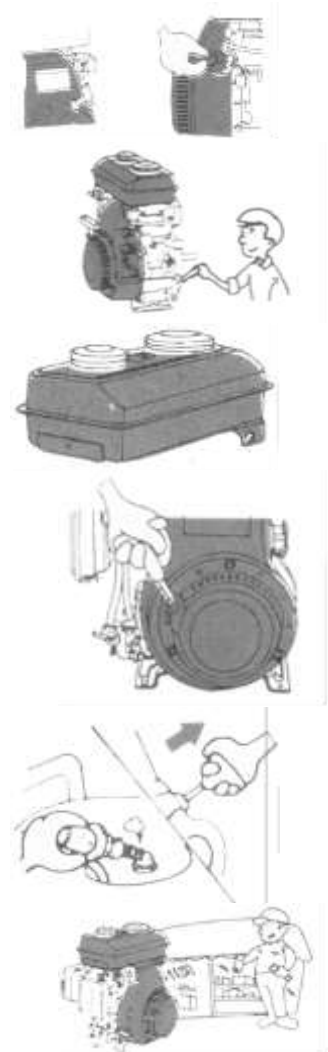


Sl. No	Part Name	Part No
1	Fly Wheel Assembly	2-1
2	Fly Wheel Fan	2-2
3	Starter Sleeve	2-3
4	Nut Fly wheel Assembly	2-4
5	Crankshaft Assembly.	2-5
5-1	Crank Shaft	2-5.1
5-2	Timing Gear	2-5.2
5-3	Governor Gear	2-5.3
5-4	Woodruff key	2-5.4
5-5	Flat Key	2-5.5
6	Ignition Coil Assembly	2-6
6-1	Ignition Coil	2-6.1
6-2	Stop lead	2-6.2
6-3	Spark Plug Cap	2-6.3
7	Spark Plug Assembly.	2-7
7-1	Spark plug	2-7.1

TROUBLE SHOOTING

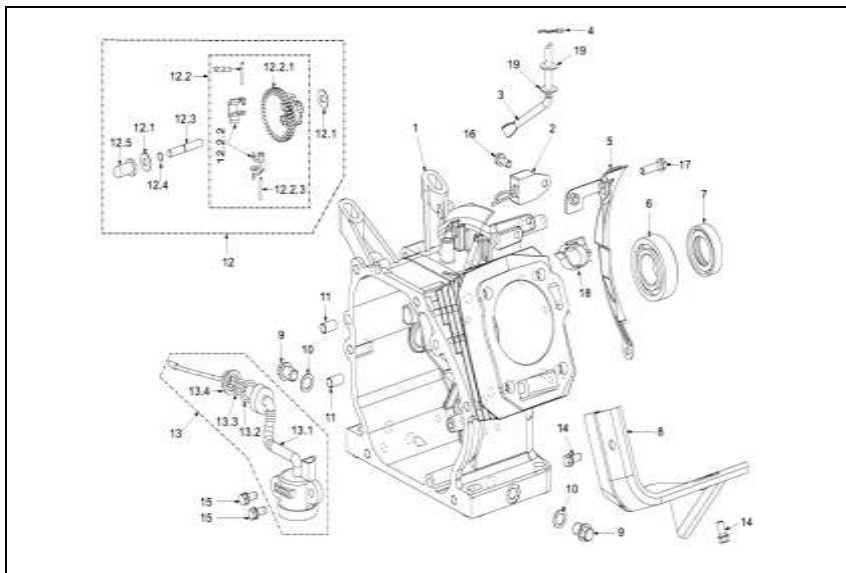
The engine does not start:

1. Is the Engine SWITCHED – OFF?
2. Check Engine OIL level. Is it low?
3. Check both fuel levels
4. Is the fuel reaching the carburetor?
5. Is there good spark in the Spark Plug?
6. If you are still not able to start it, please take the engine to the authorized dealer.



PARTS DIAGRAM & LIST-FB-GE-161/201

CRANKCASE



Sl. No	Part Name	Part No
1	Crankcase Body	1-1
2	Current Amplifier	1-2
3	Sway bar	1-3
4	Split Clip	1-4
5	Side Plate	1-5
6	Ball Bearing 6205	1-6
7	Oil seal 25x41.25x6	1-7
8	Wind guide	1-8
9	Drain bolt	1-9
10	Washer Drain bolt	1-10

Sl. No	Part Name	Part No
11	Set pin 8x14	1-11
12	Centrifugal gear (set)	1-12
12-1	Washer, slip cap 6x15x0.5	1-12.1
12-2	Centrifugal gear Assembly	1-12.2
12-2-1	centrifugal gear	1-12.2.1
12-2-2	Centrifugal block	1-12.2.2
12-2-3	pin, centrifugal block	1-12.2.3
12-3	Centre axis	1-12.3
12-4	Clip centre axis	1-12.4
12-5	Slip cap	1-12.5
13	Oil sensor Assembly	1-13
13-1	Oil sensor Body	1-13.1
13-2	O-Ring 17 x 2	1-13.2
13-3	O-Ring 11 x 2	1-13.3
13-4	Nut M10	1-13.4
14	Bolt M6 x 10	1-14
15	Bolt M6 x 14	1-15
16	Bolt M6 x 12	1-16
17	Bolt M6 x 20	1-17
18	Rubber wire hoop	1-18
19	Washer Slip Cap 6x15x0.5	1-19