

Limitation of Liability: This limited warranty is in lieu of all other express warranties, obligations, or liabilities. Any implied warranties, obligations, or liabilities, including, but not limited to, any implied warranty of merchantability shall be limited in duration to the applicable warranty period. Any action for breach of any warranties hereunder, including, but not limited to, any implied warranty of merchantability must be brought within the applicable warranty period.

Modifications of Warranty: No agent, representative, dealer, or employee of KisanKraft Limited or any of its manufacturers has the authority to increase or alter the obligations of this warranty.

Assignment / Transfer of warranty: The warranty cannot be assigned and shall not transfer if the product is resold by the first buyer. The above warranties are extended to the first end user (original purchaser), and no warranty is made, nor authorized to be made assignable on resale by the first end user.

What you must do to obtain limited warranty service: To obtain performance of any obligation under this warranty for failure during the applicable warranty period, you must deliver the defective product, to the nearest Authorized Dealer, along with proof-of-purchase (invoice/receipt). KisanKraft Limited, its manufacturers and its dealers reserve the right to inspect the claimed defective part(s) to determine if the malfunction is the result of a defect covered by this warranty. Please note that the decision of KisanKraft Limited with respect to any warranty claim is final.

After-sales Service (Including Warranty): KisanKraft Limited does not sell directly to consumers. All sales or supplies are made through Authorized Dealers. It is the responsibility of the Authorized Dealer to provide all after-sales service to consumers. Any warranty claim should be raised by dealer to KisanKraft Limited as per warranty policy.

Jurisdiction: All disputes are subject to Bangalore court's jurisdiction.

Notes:

- This purchase is not contingent upon a product demonstration. The purchaser shall satisfy himself with the product, including any product demonstration or verification of any function, before buying. KisanKraft Limited or its authorized dealers, including online sellers, shall not be liable to give any on-site demonstration after purchase of any of the product.
- Any product once used will not be taken back by KisanKraft Limited.
- Warranty and After Sale Services (including but not limited to installation, Demonstration, Repair, Routine Maintenance etc.), should be done through the Authorized Dealer selling this product.
- Dealers should have their own technician to provide After Sales Services to their Customers. KisanKraft Limited provides free training to Authorized Dealer's technicians at KisanKraft Limited's head office, on request from Authorized Dealer.

Product	Portable Pressure Wash Sprayer	Invoice Date	
Brand	Aryantra	Invoice No.	
Model	AY-PWIH-060 AY-PWIM-888		
WARRANTY PERIOD	6 MONTHS	FOR THE SPECIFIED PERIOD FROM THE DATE OF SALE OR DELIVERY WHICHEVER IS EARLIER.	
Dealer's Invoice Date		Dealer's Invoice No.	
Buyer's Info (Name, Address, Phone, etc.):		Dealer's Stamp (Address, Phone, TIN, etc.):	
Buyer's Sign		Dealer's Sign	

Warranty Policy

What is covered: KisanKraft Limited and its manufacturers warrant this product to be free from defects in material or workmanship. All parts defective in material and workmanship are covered.

This warranty will only cover defects arising under normal usage.

This warranty is limited to repair or replacement by KisanKraft Limited or its manufacturers of such parts as appear to KisanKraft or its manufacturers, upon inspection, to be defective in material and/or workmanship. KisanKraft or its manufacturers make no warranty with respect to items not manufactured or sold by them. No onsite warranty is provided by KisanKraft Limited or its manufacturers. Defective items must be brought/sent to our Authorized Dealer or KisanKraft Limited's office for service.

What is not covered: The warranty shall become null and void and neither KisanKraft Limited nor any of its manufacturers, nor its authorized dealers assume any responsibility, if the failure was caused by the following:

- (1) Operation of the product with incorrect (Low/ High)
- (2) Improper usage of machine or misuse,
- (3) Lack of maintenance,
- (4) Negligence,
- (5) Accident or physical damage,
- (6) Repairs made by unauthorized parties and/or with unauthorized parts,
- (7) Improper set up, adjustments, tampering or altered products
- (8) Any modification to the product and expendables like Carbon brush what-so-ever.

Important: (1) Normal maintenance and adjustments to the product is the responsibility of the customer. (2) Normal wear and tear are not covered under the warranty. (3) Rubber/plastic parts and consumables/ accessories such as blades, sparkplugs, nylon line, oil seals gaskets and carbon brush etc. are not covered under the warranty



Warranty Certificate

(DEALER COPY)

Incidental / Consequential Loss: KisanKraft Limited or its manufacturers will not be liable for general damages, including bodily injuries, or for incidental or consequential damages including, but not limited to, loss of use, loss of profits, loss of production, expense of substitute equipment or other commercial loss or damage.

Limitation of Liability: This limited warranty is in lieu of all other express warranties, obligations, or liabilities. Any implied warranties, obligations, or liabilities, including, but not limited to, any implied warranty of merchantability shall be limited in duration to the applicable warranty period. Any action for breach of any warranties hereunder, including, but not limited to, any implied warranty of merchantability must be brought within the applicable warranty period.

Modifications of Warranty: No agent, representative, dealer, or employee of KisanKraft Limited or any of its manufacturers has the authority to increase or alter the obligations of this warranty.

Assignment / Transfer of warranty: The warranty cannot be assigned and shall not transfer if the product is resold by the first buyer. The above warranties are extended to the first end user (original purchaser), and no warranty is made, nor authorized to be made assignable on resale by the first end user.

What you must do to obtain limited warranty service: To obtain performance of any obligation under this warranty for failure during the applicable warranty period, you must deliver the defective product, to the nearest Authorized Dealer, along with proof-of-purchase (invoice/receipt). KisanKraft Limited, its manufacturers and its dealers reserve the right to inspect the claimed defective part(s) to determine if the malfunction is the result of a defect covered by this warranty. Please note that the decision of KisanKraft Limited with respect to any warranty claim is final.

After-sales Service (Including Warranty): KisanKraft Limited does not sell directly to consumers. All sales or supplies are made through Authorized Dealers. It is the responsibility of the Authorized Dealer to provide all after-sales service to consumers. Any warranty claim should be raised by dealer to KisanKraft Limited as per warranty policy.

Jurisdiction: All disputes are subject to Bangalore court's jurisdiction.

Notes:

- This purchase is not contingent upon a product demonstration. The purchaser shall satisfy himself with the product, including any product demonstration or verification of any function, before buying. KisanKraft Limited or its authorized dealers, including online sellers, shall not be liable to give any on-site demonstration after purchase of any of the product.
- Any product once used will not be taken back by KisanKraft Limited.
- Warranty and After Sale Services (including but not limited to installation, Demonstration, Repair, Routine Maintenance etc.), should be done through the Authorized Dealer selling this product.
- Dealers should have their own technician to provide After Sales Services to their Customers. KisanKraft Limited provides free training to Authorized Dealer's technicians at KisanKraft Limited's head office, on request from Authorized Dealer.



Warranty Certificate

(KISANKRAFT COPY)

Product	Portable Pressure Wash Sprayer	Invoice Date	
Brand	Aryantra	Invoice No.	
Model	AY-PWIH-060 AY-PWIM-888		
WARRANTY PERIOD	6-Months	FOR THE SPECIFIED PERIOD FROM THE DATE OF SALE OR DELIVERY WHICHEVER IS EARLIER.	
Dealer's Invoice Date		Dealer's Invoice No.	
Buyer's Info (Name, Address, Phone, etc.):		Dealer's Stamp (Address, Phone, TIN, etc.):	
Buyer's Sign		Dealer's Sign	

Warranty Policy

What is covered: KisanKraft Limited and its manufacturers warrant this product to be free from defects in material or workmanship. All parts defective in material and workmanship are covered. This warranty will only cover defects arising under normal usage.

This warranty is limited to repair or replacement by KisanKraft Limited or its manufacturers of such parts as appear to KisanKraft or its manufacturers, upon inspection, to be defective in material and/or workmanship. KisanKraft or its manufacturers make no warranty with respect to items not manufactured or sold by them. No onsite warranty is provided by KisanKraft Limited or its manufacturers. Defective items must be brought/sent to our Authorized Dealer or KisanKraft Limited's office for service.

What is not covered: The warranty shall become null and void and neither KisanKraft Limited nor any of its manufacturers, nor its authorized dealers assume any responsibility, if the failure was caused by the following:

- (1) Operation of the product with incorrect (Low/ High)
- (2) Improper usage of machine or misuse,
- (3) Lack of maintenance,
- (4) Negligence,
- (5) Accident or physical damage,
- (6) Repairs made by unauthorized parties and/or with unauthorized parts,
- (7) Improper set up, adjustments, tampering or altered products
- (8) Any modification to the product and expendables like Carbon brush what-so-ever.

Important: (1) Normal maintenance and adjustments to the product is the responsibility of the customer. (2) Normal wear and tear are not covered under the warranty. (3) Rubber/plastic parts and consumables/ accessories such as blades, sparkplugs, nylon line, oil seals gaskets and carbon brush etc. are not covered under the warranty

Incidental / Consequential Loss: KisanKraft Limited or its manufacturers will not be liable for general damages, including bodily injuries, or for incidental or consequential damages including, but not limited to, loss of use, loss of profits, loss of production, expense of substitute equipment or other commercial loss or damage.

OUR PRODUCTS RANGE



Scan the QR code for YouTube

076760 65555 | www.aryantra.com | info@aryantra.com

Power Tools by KisanKraft

USER MANUAL

[PRESSURE WASHER]



AY-PWIH-060



AY-PWIM-888

KisanKraft Limited

Warehouse
818 3B1 To 818 3B18, Podalukur - Sangam Road,
Prabagiripatnam, Podalukur, Nellore - 524345, Andhra Pradesh, INDIA

Head Office
Sri Huchhanna Tower, #4, 1st Main, 7-A Cross, Maruthi Layout,
Dasarahalli, HAF Post, Hebbal, Bangalore-560 024, Karnataka, INDIA
Bangalore (HO) | Ahmedabad | Bhopal | Bhubaneswar | Coimbatore | Guwahati
Hubli | Hyderabad | Jaipur | Karnal | Kolkata | Lucknow | Nellore | Pune | Raipur



Scan the QR code to download
KisanKraft App



CONTENTS

GENERAL SAFETY INSTRUCTIONS FOR ELECTRIC TOOLS.....	7
SCOPE OF APPLICATION.....	8
STRUCTURE CHARCERISTICS	9
MATTERS NEEDING ATTENTION	9
DIRECTIONS FOR USE.....	10
MAINTENANCE.....	11
SAFETY CONSIDERATIONS.....	11
TROUBLESHOOTING.....	12
INSPECTION & MAINTENANCE.....	12
TECHNICAL SPECIFICATIONS	13
PART DIAGRAM.....	14

Sri Huchhanna Tower # 4, 1st Main,
7-A Cross, Maruthi Layout, Dasarahalli,
HAF Post, Hebbal, Bangalore - 560 024,
Karnataka
Phone: 080 6835 7800
Email: info@kisankraft.com
GSTIN: 29AACCK6445J1Z6

G-11, Karnavati Estate, Sarkhej -
Sanand Road, Besides Hotel Orange
Inn, Ahmedabad - 382 210, Gujarat
Phone: +91 92280 00760
Email:
info.ahmedabad@kisankraft.com
GSTIN: 24AACCK6445J1ZG

Shed #1, Near C-21 Mall,
Hoshangabad Road, Bhopal - 462
026, Madhya Pradesh
Phone: +91 70242 11672
Email: info.bhopal@kisankraft.com
GSTIN: 23AACCK6445J1ZI

Bhubaneswar (Odisha)

Plot No. 2509, Near Toyota Showroom,
Nuagada, PO-Telengapentha, PS-
Banapur, Cuttack, Sadar - 753 011,
Odisha
Phone: 0671 2959 166
Email:
info.bhubaneswar@kisankraft.com
GSTIN: 21AACCK6445J1ZM

Coimbatore (Tamil Nadu)

291/7, Kothari Nagar, MTP Road, Opp.
Sai Hospital, Vadamadurai Post,
Coimbatore - 641 017, Tamil Nadu
Phone: 0422 2460 199
Email: info.coimbatore@kisankraft.com
GSTIN: 33AACCK6445J1ZH

Guwahati (Assam)

Ground Floor, Word No. 06, Near
LP School, Paschim, Boragaon
Post, Kamrup, Guwahati - 781
035, Assam
Phone: 0361 2960 299
Email:
info.guwahati@kisankraft.com
GSTIN: 18AACCK6445J1Z9

Hubli (Karnataka)

LG-2, Akshay Enclave, Kusugal Road
Keshwapur, Hubli - 580 023, Karnataka
Phone: 0836 2287 877
Email: info.hubli@kisankraft.com
GSTIN: 29AACCK6445J1Z6

Hyderabad (Telangana)

Plot No. 7, H No. 5-5-35/234,
Shaktipeetam, Prashantinagar, I.D.A.,
Kukatpalli, Hyderabad - 500 072,
Telangana
Phone: 040 4025 0114
Email: info.hyderabad@kisankraft.com
GSTIN: 36AACCK6445J1ZB

Jaipur (Rajasthan)

No. 69-A, Sudershanpura
Industrial Area, Bais Godam,
Jaipur - 302 006, Rajasthan
Phone: 0141 2219 128
Email: info.jaipur@kisankraft.com
GSTIN: 08AACCK6445J1ZA

Karnal (Haryana)

Near Shani Mandir, Bypass GT Road,
Karnal - 132 001, Haryana
Phone: +91 70822 18201
Email: info.karnal@kisankraft.com
GSTIN: 06AACCK6445J1ZE

Kolkata (West Bengal)

Sadananda Ind. Estate, Dag No. 1183,
Mouza-Balitikuri & Dag No.1504,
Dharsa-Balitikuri, Bakkultala, Howrah -
711 113, West Bengal
Phone: 033 2955 0403
Email: info.kolkata@kisankraft.com
GSTIN: 19AACCK6445J1Z7

Lucknow (Uttar Pradesh)

Plot No. E-45, Phase-2, Transport
Nagar, Kanpur Road,
Lucknow - 226 012, Uttar Pradesh
Phone: 0522 2978 200
Email:
info.lucknow@kisankraft.com
GSTIN: 09AACCK6445J1Z8

Nellore (Andhra Pradesh)

Podalakur Sangam Road, Opp.
Sudalagunta Sugar Factory,
Prabhagiripatnam Village Podalakur
Mandal, Sri Potti Sreeramulu, Nellore -
524 345, Andhra Pradesh
Phone: 080 6835 7800
Email: info@kisankraft.com
GSTIN: 37AACCK6445J1Z9

Pune (Maharashtra)

S.R.No. 133, Village – Uruli Devanchi,
Taluka – Haveli, District – Pune - 412
308, Maharashtra
Phone: +91 84829 75446
Email: info.pune@kisankraft.com
GSTIN: 27AACCK6445J1ZA

Raipur (Chhattisgarh)

Block No. 5, Plot No. W1A-04, Dr.
Khoob Chand Baghel, Transport
Nagar, Rawabhata, Raipur - 492
010, Chhattisgarh
Phone: +91 91099 98071
Email: info.raipur@kisankraft.com
GSTIN: 22AACCK6445J1ZK



Wide Range of Products for Every Need



For more information give **MISSED CALL: 07676065555**



Many of our products have BIS: ISI certification.



Product	Portable Pressure Wash Sprayer	Invoice Date	
Brand	Aryantra	Invoice No.	
Model	AY-PWIH-060 AY-PWIM-888		
WARRANTY PERIOD	6 MONTHS	FOR THE SPECIFIED PERIOD FROM THE DATE OF SALE OR DELIVERY WHICHEVER IS EARLIER.	
Dealer's Invoice Date		Dealer's Invoice No.	
Buyer's Info (Name, Address, Phone, etc.):		Dealer's Stamp (Address, Phone, TIN, etc.):	
Buyer's Sign		Dealer's Sign	

Warranty Policy

What is covered: KisanKraft Limited and its manufacturers warrant this product to be free from defects in material or workmanship. All parts defective in material and workmanship are covered.

This warranty will only cover defects arising under normal usage.

This warranty is limited to repair or replacement by KisanKraft Limited or its manufacturers of such parts as appear to KisanKraft or its manufacturers, upon inspection, to be defective in material and/or workmanship. KisanKraft or its manufacturers make no warranty with respect to items not manufactured or sold by them. No onsite warranty is provided by KisanKraft Limited or its manufacturers. Defective items must be brought/sent to our Authorized Dealer or KisanKraft Limited's office for service.

What is not covered: The warranty shall become null and void and neither KisanKraft Limited nor any of its manufacturers, nor its authorized dealers assume any responsibility, if the failure was caused by the following:

- (1) Operation of the product with incorrect (Low/ High)
- (2) Improper usage of machine or misuse,
- (3) Lack of maintenance,
- (4) Negligence,
- (5) Accident or physical damage,
- (6) Repairs made by unauthorized parties and/or with unauthorized parts,
- (7) Improper set up, adjustments, tampering or altered products
- (8) Any modification to the product and expendables like Carbon brush what-so-ever.

Important: (1) Normal maintenance and adjustments to the product is the responsibility of the customer. (2) Normal wear and tear are not covered under the warranty. (3) Rubber/plastic parts and consumables/ accessories such as blades, sparkplugs, nylon line, oil seals gaskets and carbon brush etc. are not covered under the warranty

Incidental / Consequential Loss: KisanKraft Limited or its manufacturers will not be liable for general damages, including bodily injuries, or for incidental or consequential damages including, but not limited to, loss of use, loss of profits, loss of production, expense of substitute equipment or other commercial loss or damage.

Limitation of Liability: This limited warranty is in lieu of all other express warranties, obligations, or liabilities. Any implied warranties, obligations, or liabilities, including, but not limited to, any implied warranty of merchantability shall be limited in duration to the applicable warranty period. Any action for breach of any warranties hereunder, including, but not limited to, any implied warranty of merchantability must be brought within the applicable warranty period.

Modifications of Warranty: No agent, representative, dealer, or employee of KisanKraft Limited or any of its manufacturers has the authority to increase or alter the obligations of this warranty.

Assignment / Transfer of warranty: The warranty cannot be assigned and shall not transfer if the product is resold by the first buyer. The above warranties are extended to the first end user (original purchaser), and no warranty is made, nor authorized to be made assignable on resale by the first end user.

What you must do to obtain limited warranty service: To obtain performance of any obligation under this warranty for failure during the applicable warranty period, you must deliver the defective product, to the nearest Authorized Dealer, along with proof-of-purchase (invoice/receipt). KisanKraft Limited, its manufacturers and its dealers reserve the right to inspect the claimed defective part(s) to determine if the malfunction is the result of a defect covered by this warranty. Please note that the decision of KisanKraft Limited with respect to any warranty claim is final.

After-sales Service (Including Warranty): KisanKraft Limited does not sell directly to consumers. All sales or supplies are made through Authorized Dealers. It is the responsibility of the Authorized Dealer to provide all after-sales service to consumers. Any warranty claim should be raised by dealer to KisanKraft Limited as per warranty policy.

Jurisdiction: All disputes are subject to Bangalore court's jurisdiction.

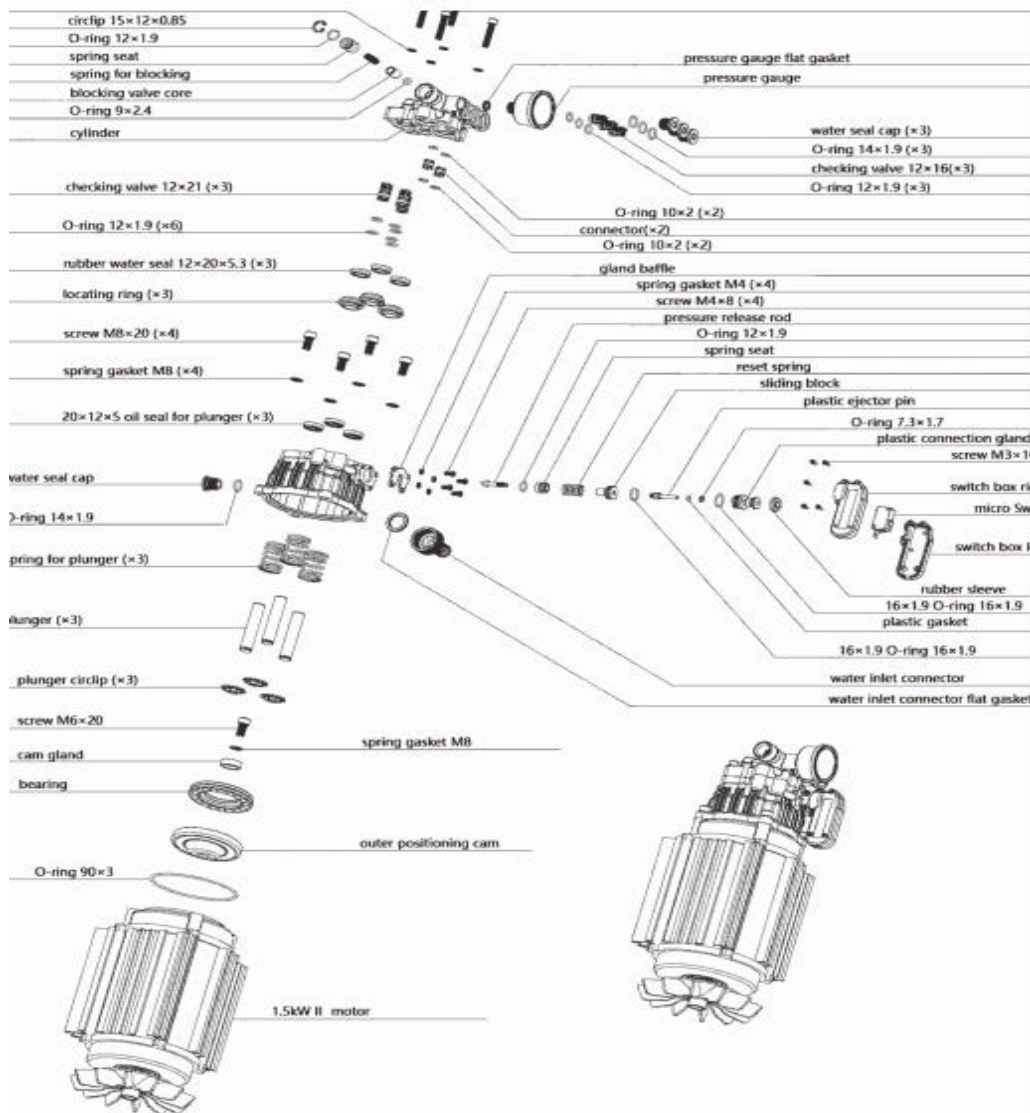
Notes:

- This purchase is not contingent upon a product demonstration. The purchaser shall satisfy himself with the product, including any product demonstration or verification of any function, before buying. KisanKraft Limited or its authorized dealers, including online sellers, shall not be liable to give any on-site demonstration after purchase of any of the product.
- Any product once used will not be taken back by KisanKraft Limited.
- Warranty and After Sale Services (including but not limited to installation, Demonstration, Repair, Routine Maintenance etc.), should be done through the Authorized Dealer selling this product.
- Dealers should have their own technician to provide After Sales Services to their Customers. KisanKraft Limited provides free training to Authorized Dealer's technicians at KisanKraft Limited's head office, on request from Authorized Dealer.

KisanKraft has a large range of products to serve the farmers. A list of our products is given below:

<p>Brush Cutters and Accessories</p> <ul style="list-style-type: none"> Brush Cutter/Power Weeder Backpack Brush Cutter Tea Pruner Pole pruner with Engine Reaper Attachment Blades-Circular Blades (2 & 3 points) Baffle Nylon Rope Tap & Go <p>Chainsaws</p> <ul style="list-style-type: none"> Petrol Chainsaw Electric Chainsaw Chain Sharpening Machine <p>Engines and Water Pumps</p> <ul style="list-style-type: none"> Engine –Diesel-(Horizontal) Engine –Diesel (Vertical) Engine-Kerosene Water Pump with Petrol Engine Water Pump with Kerosene Engine Water Pump with Diesel Engine <p>Hand Tools</p> <ul style="list-style-type: none"> Secateurs Folding Saw Garden Rake Garden Shovel Hedge Shear Lopper Telescopic Hedge Shear Telescopic Lopping Shear Tree Pruner Telescopic Steel Pipe & Fruit Picker Bag Sheep Shear <p>Garden Tools</p> <ul style="list-style-type: none"> Electric Pressure Washer Hedge Trimmer Lawn Mower (Electric, Petrol & Manual) Leaf Blower 	<p>Cultivators and Accessories</p> <ul style="list-style-type: none"> Petrol and Diesel <p>Sprayers and Accessories</p> <ul style="list-style-type: none"> Battery Sprayer Portable Power Sprayer Trolley Sprayer Manual Knapsack Sprayer Manual Pressure Sprayer Rose Cans Hose Crimping Machine HTP Sprayer HTP Delivery Hose HTP Hose Reel HTP Stand HTP Gun / Lance (Brass Rod) Knapsack Power Sprayer Mister / Duster / Granule Spreader HTP Sprayer Set with Diesel Engine HTP Sprayer Set with Kerosene Engine Fogging Machine <p>Milking Machine</p> <ul style="list-style-type: none"> Wood Shredder Fodder Ensiling Chaff Cutter Fodder Grinder Chaff Cutter Fodder Mini Chaff Cutter <p>Harvester</p> <ul style="list-style-type: none"> Maize Sheller Maize Sheller + Dehusker Maize Combine Harvester Onion Digger Carlotta Italy Tea Leaf Harvester Sugarcane Combine Harvester Sugarcane Leaf Stripper <p>Transplanter and Post Hole Digger</p> <ul style="list-style-type: none"> Paddy Transplanter (2 & 8 Rows) Transplanter-Vegetable & Tobacco Post Hole Digger (4" to 14" Augers)
-----------------------------------------------------------------------------------------------------------------------------------------------------------------------------------------------------------------------------------------------------------------------------------------------------------------------------------------------------------------------------------------------------------------------------------------------------------------------------------------------------------------------------------------------------------------------------------------------------------------------------------------------------------------------------------------------------------------------------------------------------------------------------------------------------------------------------------------------------------------------------------------------------------------------------------------------------------------------------------------------------------------------------------------------------------------------------------------------------------------------------------------------------------------------------------------------------------------------------------------------------------------------------------------------------------------------------------------------------------------------------------------------	---------------------------------------------------------------------------------------------------------------------------------------------------------------------------------------------------------------------------------------------------------------------------------------------------------------------------------------------------------------------------------------------------------------------------------------------------------------------------------------------------------------------------------------------------------------------------------------------------------------------------------------------------------------------------------------------------------------------------------------------------------------------------------------------------------------------------------------------------------------------------------------------------------------------------------------------------------------------------------------------------------------------------------------------------------------------------------------------------------------------------------------------------------------------------------------------------------------------------------------------------------------------------------------------------------------------------------------------------------------------------------------------------------------------------------------------------------------------------------

PART DIAGRAM



GENERAL SAFETY INSTRUCTIONS FOR ELECTRIC TOOLS

WARNING! Read all instructions. Failure to follow all instructions listed below may result in electric shock, fire and/or serious injury:

SAVE THESE INSTRUCTIONS

1) Work area

- **Keep work area clean and well lit.** Cluttered and dark areas invite accidents
- **Do not operate machines in explosive atmospheres, such as in the presence of flammable liquids, gases, or dust.** Machines create sparks which may ignite the dust or fumes.
- **Keep children and bystanders away while operating a machine.** Distractions can cause you to lose control.

2) Electrical safety

- **Machine plugs must match the outlet. Never modify the plug in any way. Do not use any adapter plugs with earthed (grounded) machines.** Unmodified plugs and matching outlets will reduce risk of electric shock.
- **Avoid body contact with earthed or grounded surfaces such as pipes, radiators, ranges, and refrigerators.** There is an increased risk of electric shock if your body is earthed or grounded.
- **Do not expose machines to rain or wet conditions.** Water entering a machine will increase the risk of electric shock.
- **Do not abuse the cord. Never use the cord for carrying, pulling, or unplugging the machine. Keep cord away from heat, oil, sharp edges or moving parts.** Damaged or entangled cords increase the risk of electric shock.
- **When operating a machine outdoors, use an extension cord suitable for outdoor use.** Use of a cord suitable for outdoor use reduces the risk of electric shock.

3) Personal safety

- **Stay alert, watch what you are doing and use common sense when operating a machine. Do not use a machine while you are tired or under the influence of drugs, alcohol, or medication.** A moment of inattention while operating machines may result in serious personal injury.
- **Use safety equipment. Always wear eye protection.** Safety equipment such as dust mask, non-skid safety shoes, hard hat, or hearing protection used for appropriate conditions will reduce personal injuries.
- **Avoid accidental starting. Ensure the switch is in the off position before plugging in.** Carrying machines with your finger on the switch or plugging in machines that have the switch on invites accidents.
- **Remove any adjusting key or wrench before turning the machine on.** A wrench or a key left attached to a rotating part of the machine may result in personal injury.

- **Do not overreach. Keep proper footing and balance at all times.** This enables better control of the machine in unexpected situations.
- **Dress properly. Do not wear loose clothing or jewellery. Keep your hair, clothing, and gloves away from moving parts.** Loose clothes, jewellery or long hair can be caught in moving parts.
- **If devices are provided for the connection of dust extraction and collection facilities, ensure these are connected and properly used.** Use of these devices can reduce dust related hazards.

4) **Machine use and care**

- **Do not force the machine. Use the correct machine for your application.** The correct machine will do the job better and safer at the rate for which it was designed.
- **Do not use the machine if the switch does not turn it on and off.** Any machine that cannot be controlled with the switch is dangerous and must be repaired.
- **Disconnect the plug from the power source before making any adjustments, changing accessories, or storing machines.** Such preventive safety measures reduce the risk of starting the machine accidentally.
- **Store idle machines out of the reach children and do not allow persons unfamiliar with the machine or these instructions to operate the machine.** Machines are dangerous in the hands of untrained users.
- **Maintain machines. Check for misalignment or binding of moving parts, breakage of parts and any other condition that may affect the machines operation. If damaged, have the machine repaired before use.** Many accidents are caused by poorly maintained machines.
- **Keep cutting tools sharp and clean.** Properly maintained cutting tools with sharp cutting edges are less likely to bind and are easier to control.
- **Use the machine, accessories, and tool bits etc., in accordance with these instructions and in the manner intended for the particular type of machine, considering the working conditions and the work to be performed.** Use of the machine for operations different from intended could result in a hazardous situation.

5) **Service**

- **Have your machine serviced by a qualified repair person using only identical replacement parts.** This will ensure that the safety of the machine is maintained.

SCOPE OF APPLICATION:

1. The machine is mainly used for dairy, vehicles, industrial equipment, agricultural machines. For example, it can clean dairy floors, tractors, or cars. It is the best washer for washing cars and motorcycles both in home and car maintenance store.
2. It can be used for washing building, floor, bathhouse, swimming pool. It can be used for cleaning window, washroom, oil station, or any other places where it is dirty.
3. It can be used for cleaning food processing plant and their equipment, cleaning kitchen in the hotel or at home and be used for hygiene and disease control at home or public area. It can also be used for watering the garden.

2. **If the machine needs to be repaired in the Warranty period,**

- Please return the machine to the dealer shop.
- You need to provide the certificate of purchase and invoice in order to repair the machine.
- Before packing and storing, the machine should be cleaned, then pack the machine properly. Packaging should be firm. Store the machine in dry conditions.
- For transportation safety. The machine should comply with ISTA.

3. **Do not dispose of electrical machines as unsorted municipal waste,**

- Use separate collection facilities.
- Contact your local government for information regarding the collection systems available.
- If electrical machines are disposed of in landfills or dumps, hazardous substances can leak into the groundwater and get into the food chain, damaging your health and well-being.
- When replacing old machines with new ones, the retailer will be happy to take back your old machine for disposal.

TECHNICAL SPECIFICATIONS

ITEM	AY-PWIH-060	AY-PWIM-888
Max. pressure water supply	100 (bar/psi)	150 (bar/psi)
Theoretical Flow	10 L/min	10 L/min
Motive Power	1.3 kW (1.74 hp)	2.6 Kw (3.48 hp)
Max. flow rate	7.2 L/min	1.5 L/min
Power Supply	220 V	220V / 50 Hz
Rotating Speed	2800 RPM	2800 RPM

3) Cable

- a. Ensure the length of the cable should not be more than 5 meters
- b. Cable from the residual current circuit breaker to the pressure washer has to use single cable access.
- c. Motor through the cable should be reliable grounding (motor terminal box with ground mark)
- d. The machine must be kept on dry place, where no water contents are present and leakage complaints for the safety measures can be taken care.
- e. When operating the machine, he must wear insulating gloves and insulating shoes (The operator must buy gloves separately).

TROUBLESHOOTING

Fault I	Motor does not Start or Stop, when it is working condition.	
	a. Power supply without the electricity or poor contact socket.	a. Check the power supply, insert the plug proper.
	b. The machine switch be affected with damp or damage.	b. Replace the machine switch.
	c. Temperature of the motor protector is high.	c. Wait for some time to let the motor cool.
Fault II	The nozzle Cannot Spray water or supply water in low pressure	
	a. Nozzle is clogged	a. Clear the nozzle or replace it if necessary.
Fault III	Water Leaking	
	a. Water seal worn-out.	a. Replace the water seal.
	b. Cone seal surface damage.	b. Replace the cone seal.

INSPECTION & MAINTENANCE

1. To enhance the life of the machine, make sure that,


- Clean & check the machine, before working.
- Inspect the filter and the nozzle.
- There is no impurity in water.
- After working there is no water in the pump and the hose.

4. It can be used for other places which is not listed above.

STRUCTURE CHARCERISTICS

1. The machine has single-phase motor direct drive, compact structure, and small volume, reliable operation.
2. The design of the machine structure is compact, easy to transfer, reduce the labor intensity of the user.
3. The machine matching inlet pipe, outlet pipe and nozzle, easy to operate, disassembling quickly.
4. It has self-priming Motor.

MATTERS NEEDING ATTENTION

	1. Wear insulating gloves and insulating shoes when you are operating the machine.
	2. Make sure the machine is installed leakage protection device before you operate the machine.
WARNING!	3. Make sure safety grounding device must be done.
WARNING!	4. Should not operate high pressure machine if it is not Installed a suitable filter.
WARNING!	5. Do not spray the water at the person, animal, or electrical equipment. Otherwise, damage, or accident or death may result.
WARNING!	6. Do not put the wire on cross way or near heat source or any sharp object, otherwise fire or electrical shock may occur.
DANGEROUS	7. Do not use the machine in the rain and do not touch the machine or electrical pans with your wet hand. If the waterproof for the on/off swi1ch, please replace it with a new one.
SECURITY	<ol style="list-style-type: none"> I. When operating, please firmly hold the gun, as there is kicked back in the gun, otherwise the gun may be out of your control and damage or accident result. II. Please don't put the machine's power supply cord intersection, in order to avoid the wire damage and danger III. The machine maintenance must be done under the condition of cut off power supply. IV. The machine is single phase motor transmission circuit current carrying ability should not be less than 20 amperes. If it does not control to the national standard ·wires, it will cause motor stalling, motor bum and serious consequences. V. For your safely, make sure the accesses used of the machine is original from the factory or your agent.

DIRECTIONS FOR USE

1. Prepare for starting

Before starting, check if there are any loose fittings and damages.

2. Connecting the water inlet hose

Connect the water inlet hose to the water inlet on the pump firmly without any leakage and connect the other end of the hose to the water source, such as immerse it into pool or water container. There should be a filter net outside the water inlet hose-let there is impurity in the water, and it will damage the pump if it comes into pump.

NOTICE: The hose should not be twisted and make it extend.

3. Connecting the water outlet hose

Connect the pressure hose to the water outlet on the pump firmly without any leakage and connect the other end of the spray gun.

4. Connecting to the power wire

Make sure if the power supply is the same voltage as the machine requires. The fixed socket for the power supply should be connected by qualified person. If you use an extension cable, the plug and socket should be waterproof when it is connected to the socket, the switch on the machine must be in the OFF position.

5. Choice of nozzle

Fan nozzle:

When you choose large angle, the nozzle produces fan jet. Which can be used to clean large area on the surface of the dirt, such as cars, buses, trucks, tractors and other vehicles, ships, and food factories, hotel kitchen, bath, swimming pools, barns, and animal husbandry etc.

Round hole nozzle:

When you choose the small angle, the nozzle can produce strong and high-pressure beam. It can be used to clean surfaces of dirt. Such as agricultural machinery, construction machinery, etc.

Use the original gun from factory, as the other- gun may not match the machine.

I. Start the machine

Check the water inlet hose and high-pressure hose are well connected and power supply is connected, then you can put your thumb on the machine and press the trigger on the gun, the water will spray out in a few seconds after the air in the pump was discharged.

1. Spray to clean the surface with distance should not be far away because of the impact of the nozzle decreases with the increase of set distance.

2. In general, cleaning pressure shall not exceed the working pressure (MPa.). If you have any special needs, you can let the machine work, at the highest pressure of 9 MPa. But it is not recommended to let the machine work under the highest pressure for long time.
3. After release, the trigger of spray gun, the machine will automatically shut down the motor. If you do not use the machine for a long time, you must switch OFF the power switch, press the trigger of spray gun to release the pressure.
4. When factory has adjusted the working pressure at 6 MPa, with fan nozzle, the pressure should be 4-5 MPa
5. It is normal that when it is working, there may be some water drop out from the water discharge holes in the pump Junction. It does not affect the use of Machine.
6. If it is a long time since your last use of the machine, because of the small torque for the single-phase motor, the motor may not start when you turn it ON, in this case, you should turn it OFF, at once then repeat it for more 2 or 3 times. If it still cannot turn on. You can remove the fan cover from the motor and the fan rotates for 2 or 3 rounds and then turn on the motor again. (The fan cover should be re-installed when the motor is in OFF Condition before it is going to ON.)

MAINTENANCE

1. To enhance the life of the machine, use recommended oil and every first consecutive, the new oil should be changed after 20 hours. After that, every 150 hours, you should replace the new engine oil. should use the 20w40 oil. Correct use of the oil is very important to ensure, the service life of machine.
2. In cold condition, the water left in the pump may solidify machine into ice also form rust, which may damage the parts of the pump when you start the machine, so when you finish using the machine, please drain out the water in the pump and store the machine in a warm room.

SAFETY CONSIDERATIONS

1) Project safety inspection

- a. Check whether the electric device wiring is strong enough and intact.
- b. With a 500v test leads to casing insulation resistance are generally should be greater than 20 mega ohms.

2) Power and control electric

- a. Ensure the power supply as per the label is affixed.
- b. Must install power control unit i.e., short circuit breaker, overload switch and residual, current circuit breaker etc.
- c. Note: Leakage protector installed or and after a period of time (generally every month) should be in the condition of switching power ON. Press the test button to check whether the leakage protection performance is proper and reliable. Each Time you press the test button, protection should be action at a time. If there is Disorder when it uploads, send it to factory for repair.