

Important: (1) Normal maintenance and adjustments to the product is the responsibility of the customer. (2) Normal wear and tear is not covered under warranty. (3) Rubber/plastic parts and consumables such as blades, clutch and clutch-bell, spark-plugs, nylon line, air-filters, fuel-filters, oil seals etc. are not covered under the warranty.

No Warranty On Electrical Motor / Electrical Parts/Battery Etc.

Incidental / Consequential Loss: KisanKraft Machine Tools Private Limited or its manufacturers will not be liable for general damages, including bodily injuries, or for incidental or consequential damages including, but not limited to, loss of use, loss of profits, loss of production, expense of substitute equipment or other commercial loss or damage.

Limitation of Liability: This limited warranty is in lieu of all other express warranties, obligations, or liabilities. Any implied warranties, obligations or liabilities, including, but not limited to, any implied warranty of merchantability shall be limited in duration to the applicable warranty period. Any action for breach of any warranty hereunder, including, but not limited to, any implied warranty of merchantability must be brought within the applicable warranty period.

Modifications of Warranty: No agent, representative, dealer, or employee of KisanKraft Machine Tools Private Limited or any of its manufacturers has the authority to increase or alter the obligations of this warranty.

Assignment / Transfer of warranty: The warranty cannot be assigned and shall not transfer if the product is resold by the first buyer. The above warranties are extended to the first end user (original purchaser), and no warranty is made, nor authorized to be made assignable on resale by the first end user.

What you must do to obtain limited warranty service: To obtain performance of any obligation under this warranty for failure during the applicable warranty period, deliver the defective product, to the nearest Authorized Dealer. KisanKraft Machine Tools Private Limited, its manufacturers and its dealers reserve the right to inspect the claimed defective part(s) to determine if the malfunction is the result of a defect covered by this warranty. Please note that the decision of KisanKraft Machine Tools Pvt Ltd with respect to any warranty claim is final.

Receipt is required for availing warranty services

Jurisdiction: All disputes are subject to Bangalore court's jurisdiction.

Our Products

- ◆Chainsaws◆Brush Cutters and Accessories◆Harvesters◆
- ◆Engines and Water Pumps◆Hand Tools◆Garden Tools◆
- ◆Cultivators and Accessories◆Sprayers and Accessories◆
- ◆Transplanter and Post Hole Digger ◆Milking Machines◆

This warranty is null & void, if you fail to register the warranty with KisanKraft by sending the KisanKraft Copy with dealer's stamp.

KisanKraft Machine Tools Private Limited

Product	Agriculture Wood Chipper & Shredder	KisanKraft Invoice Date	
Brand	KisanKraft	KisanKraft Invoice No.	
Model	KK-WCS-200		
WARRANTY PERIOD	6-MONTHS	FOR THE SPECIFIED PERIOD FROM THE DATE OF SALE OR DELIVERY WHICHEVER IS EARLIER.	
Dealer's Invoice Date		Dealer's Invoice No.	
Buyer's Info (Name, Address, Phone, etc.):		Dealer's Stamp (Address, Phone, TIN, etc.):	
Buyer's Sign		Dealer's Sign	

What is covered: KisanKraft Machine Tools Private Limited and its manufacturers warrant this product to be free from defects in material or workmanship. All parts defective in material and workmanship are covered.

This warranty will only cover defects arising under normal usage.

This warranty is limited to repair or replacement by KisanKraft Machine Tools Private Limited or its manufacturers at the premises of Authorized Dealers, of such parts as appear to KisanKraft or its manufacturers, upon inspection, to be defective in material and/or workmanship. KisanKraft or its manufacturers make no warranty with respect to trade accessories not manufactured or sold by them.

What is not covered: The warranty shall become null and void and neither KisanKraft Machine Tools Private Limited nor any of its manufacturers, nor its authorized dealers assumes any responsibility, if the failure was caused by the following:

- (1) Operation of product with incorrect fuel or lubricants,
- (2) Incorrect usage of machine or misuse,
- (3) Lack of maintenance,
- (4) Negligence,
- (5) Accident or physical damage,
- (6) Repairs made by unauthorized parties and/or with unauthorized parts,
- (7) Improper set up, adjustments, tampering or altered products

Note: The purchase is not contingent upon a product demonstration. The purchaser shall satisfy himself with the product, including any product demonstration or verification of any function, before buying. KisanKraft Limited or its authorized dealers, including online sellers, shall not be liable to give any on-site demonstration after purchase of any of the product

This warranty is null & void, if you fail to register the warranty with KisanKraft by sending the KisanKraft Copy with dealer's stamp.

KisanKraft Machine Tools Private Limited

Product	Agriculture Wood Chipper & Shredder	KisanKraft Invoice Date	
Brand	KisanKraft	KisanKraft Invoice No.	
Model	KK-WCS-200		
WARRANTY PERIOD	6-MONTHS	FOR THE SPECIFIED PERIOD FROM THE DATE OF SALE OR DELIVERY WHICHEVER IS EARLIER.	
Dealer's Invoice Date		Dealer's Invoice No.	
Buyer's Info (Name, Address, Phone, etc.):		Dealer's Stamp (Address, Phone, TIN, etc.):	
Buyer's Sign		Dealer's Sign	

What is covered: KisanKraft Machine Tools Private Limited and its manufacturers warrant this product to be free from defects in material or workmanship. All parts defective in material and workmanship are covered.

This warranty will only cover defects arising under normal usage.

This warranty is limited to repair or replacement by KisanKraft Machine Tools Private Limited or its manufacturers at the premises of Authorized Dealers, of such parts as appear to KisanKraft or its manufacturers, upon inspection, to be defective in material and/or workmanship. KisanKraft or its manufacturers make no warranty with respect to trade accessories not manufactured or sold by them.

What is not covered: The *warranty shall become null and void* and neither KisanKraft Machine Tools Private Limited nor any of its manufacturers, nor its authorized dealers assumes any responsibility, if the failure was caused by the following:

- (1) Operation of product with incorrect fuel or lubricants, (2) Incorrect usage of machine or misuse, (3) Lack of maintenance, (4) Negligence, (5) Accident or physical damage, (6) Repairs made by unauthorized parties and/or with unauthorized parts, (7) Improper set up, adjustments, tampering or altered products

This warranty is null & void, if you fail to register the warranty with KisanKraft by sending the KisanKraft Copy with dealer's stamp.

KisanKraft Machine Tools Private Limited

Customer Care Phone: 080.2233.0318, Email: kisankraft@gmail.com

This warranty is null & void, if you fail to register the warranty with KisanKraft by sending the KisanKraft Copy with dealer's stamp.
KisanKraft Machine Tools Private Limited

🌐: www.kisankraft.com

✉: info@kisankraft.com

☎: +91.80.22330318

Wide Range of Products for Every Need



For more information give **MISSED CALL: 07676065555**



Many of our products have BIS: ISI certification.



Important: (1) Normal maintenance and adjustments to the product is the responsibility of the customer. (2) Normal wear and tear is not covered under warranty (3) Rubber/plastic parts and consumables such as blades, clutch and clutch-bell, spark-plugs, nylon line, air-filters, fuel-filters, oil seals etc. are not covered under the warranty.

No Warranty On Electrical Motor / Electrical Parts/Battery Etc.

Incidental / Consequential Loss: KisanKraft Machine Tools Private Limited or its manufacturers will not be liable for general damages, including bodily injuries, or for incidental or consequential damages including, but not limited to, loss of use, loss of profits, loss of production, expense of substitute equipment or other commercial loss or damage.

Limitation of Liability: This limited warranty is in lieu of all other express warranties, obligations, or liabilities. Any implied warranties, obligations or liabilities, including, but not limited to, any implied warranty of merchantability shall be limited in duration to the applicable warranty period. Any action for breach of any warranties hereunder, including, but not limited to, any implied warranty of merchantability must be brought within the applicable warranty period.

Modifications of Warranty: No agent, representative, dealer, or employee of KisanKraft Machine Tools Private Limited or any of its manufacturers has the authority to increase or alter the obligations of this warranty.

Assignment / Transfer of warranty: The warranty cannot be assigned and shall not transfer if the product is resold by the first buyer. The above warranties are extended to the first end user (original purchaser), and no warranty is made, nor authorized to be made assignable on resale by the first end user.

What you must do to obtain limited warranty service: To obtain performance of any obligation under this warranty for failure during the applicable warranty period, deliver the defective product, to the nearest Authorized Dealer. KisanKraft Machine Tools Private Limited, its manufacturers and its dealers reserve the right to inspect the claimed defective part(s) to determine if the malfunction is the result of a defect covered by this warranty. Please note that the decision of KisanKraft Machine Tools Pvt Ltd with respect to any warranty claim is final.

Receipt is required for availing warranty services

Jurisdiction: All disputes are subject to Bangalore court's jurisdiction.

Our Products

- ◆Chainsaws◆Brush Cutters and Accessories◆Harvesters◆
- ◆Engines and Water Pumps◆Hand Tools◆Garden Tools◆
- ◆Cultivators and Accessories◆Sprayers and Accessories◆
- ◆Transplanter and Post Hole Digger ◆Milking Machines◆

This warranty is null & void, if you fail to register the warranty with KisanKraft by sending the KisanKraft Copy with dealer's stamp.

KisanKraft Machine Tools Private Limited

Operation Manual

KK-WCS-200



Note : Engine is not included

KisanKraft Limited

Sri Huchhanna Tower, #4, 1st Main, 7-A Cross, Maruthi Layout, Dasarahalli,
HAF Post, Hebbal, Bangalore 560024, Karnataka, INDIA

♦ Bangalore (HO) ♦ Ahmedabad ♦ Bhopal ♦ Bhubaneswar ♦ Coimbatore ♦
♦ Shimla ♦ Guwahati ♦ Hinudpur ♦ Hubli ♦ Hyderabad ♦ ♦ Jaipur ♦ Karnal
♦ Kolkata ♦ Lucknow ♦ Nagpur ♦ Patna ♦ Pune ♦ Raipur ♦

KisanKraft has a large range of products to serve the farmers. A list of our products is given below:

Brush Cutters and Accessories

Brush Cutter/Power Weeder
Backpack Brush Cutter
Tea Pruner
Pole pruner with Engine
Reaper Attachment
Blades-Circular
Blades (2 & 3 points)
Baffle
Nylon Rope
Tap & Go

Chainsaws

Petrol Chainsaw
Electric Chainsaw
Chain Sharpening Machine

Engines and Water Pumps

Engine –Diesel-(Horizontal)
Engine –Diesel(Vertical)
Engine-Kerosene
Water Pump with Petrol Engine
Water Pump with Kerosene Engine
Water Pump with Diesel Engine

Hand Tools

Secateurs
Folding Saw
Garden Rake
Garden Shovel
Hedge Shear
Lopper
Telescopic Hedge Shear
Telescopic Lopping Shear
Tree Pruner
Telescopic Steel Pipe & Fruit Picker Bag
Sheep Shear

Garden Tools

Electric Pressure Washer
Hedge Trimmer
Lawn Mower (Electric, Petrol & Manual)
Leaf Blower

Cultivators and Accessories

Petrol and Diesel

Sprayers and Accessories

Battery Sprayer
Portable Power Sprayer
Trolley Sprayer
Manual Knapsack Sprayer
Manual Pressure Sprayer
Rose Cans
Hose Crimping Machine
HTP Sprayer
HTP Delivery Hose
HTP Hose Reel
HTP Stand
HTP Gun / Lance (Brass Rod)
Knapsack Power Sprayer
Mister / Duster / Granuel Spreader
HTP Sprayer Set with Diesel Engine
HTP Sprayer Set with Kerosene Engine
Fogging Machine

Milking Machine

Wood Shredder
Fodder Ensiling Chaff Cutter
Fodder Grinder Chaff Cutter
Fodder Mini Chaff Cutter

Harvester

Maize Sheller
Maize Sheller + Dehusker
Maize Combine Harvester
Onion Digger Carlotti Italy
Tea Leaf Harvester
Sugarcane Combine Harvester
Sugarcane Leaf Stripper

Transplanter and Post Hole Digger

Paddy Transplanter (2 & 8 Rows)
Transplanter-Vegetable & Tobacco
Post Hole Digger (4" to 14" Augers)

Sl. No	Ref No.	Part Name	Part No
1	68FK-1.12.1000A	Fuel tank ass.	12-1
1.1	68F-1.12.1100A	Fuel tank cover Assembly.	12-1.1
1-1.1	68F-1.12.1101A	Fuel tank cover	12-1.1.1
1-1.2	68F-1.12.1102	Rubber seal, Fuel tank cover 38x56x3	12-1.1.2
1.2	68F-1.12.1200	Fuel filter Assembly	12-1.2
1-2.1	68F-1.12.1201	Support, Fuel filter	12-1.2.1
1-2.2	68F-1.12.1202	Fuel filter	12-1.2.2
1.3	68F-1.12.1001A	Fuel tank	12-1.3
1.4	68FK-1.12.2000	Fuel joint Assembly	12-1.4
1-4.1	GB6177	Nut M10	12-1.4.1
1-4.2	68FK-1.12.2002	Fuel joint	12-1.4.2
2	68FK-1.12.0001	Fuel tube 8.5x4.5	12-2
3	68F-1.12.0002	Clip Fuel tube	12-3
4	GB5787	Bolt M6 x 28	12-4
5	GB6177	Nut M6	12-5
6	68F-1.12.3000	Fuel joint	12-6
7	68F-1.12.4000	Bracket	12-7
8	68F-1.12.5000	Fuel tube 8.5x4.5	12-8

CONTENTS

BEFORE GETTING STARTED	8
SAFETY INSTRUCTIONS	8
ASSEMBLY INSTRUCTIONS	10
PREPARATION BEFORE OPERATION.....	12
MAINTENANCE AND STORAGE	13
WOOD SHREDDER OPERATION.....	13
SHARPENING THE BLADE	14
ADJUSTING THE BELT	14
REPLACING THE BELT	15
TECHNICAL SPECIFICATIONS	16
OPERATION MANUAL-ENGINE.....	17

Product	Agriculture Wood Chipper & Shredder	KisanKraft Invoice Date	
Brand	KisanKraft	KisanKraft Invoice No.	
Model	KK-WCS-200		
WARRANTY PERIOD	6-MONTHS	FOR THE SPECIFIED PERIOD FROM THE DATE OF SALE OR DELIVERY WHICHEVER IS EARLIER.	
Dealer's Invoice Date		Dealer's Invoice No.	
Buyer's Info (Name, Address, Phone, etc.):		Dealer's Stamp (Address, Phone, TIN, etc.):	
Buyer's Sign		Dealer's Sign	

What is covered: KisanKraft Machine Tools Private Limited and its manufacturers warrant this product to be free from defects in material or workmanship. All parts defective in material and workmanship are covered.

This warranty will only cover defects arising under normal usage.

This warranty is limited to repair or replacement by KisanKraft Machine Tools Private Limited or its manufacturers at the premises of Authorized Dealers, of such parts as appear to KisanKraft or its manufacturers, upon inspection, to be defective in material and/or workmanship. KisanKraft or its manufacturers make no warranty with respect to trade accessories not manufactured or sold by them.

What is not covered: The warranty shall become null and void and neither KisanKraft Machine Tools Private Limited nor any of its manufacturers, nor its authorized dealers assumes any responsibility, if the failure was caused by the following:

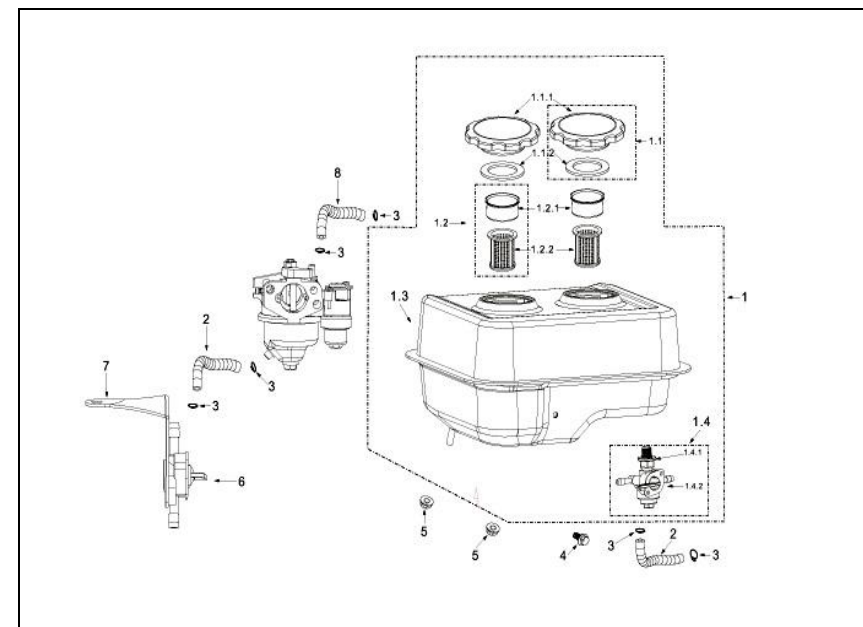
- (1) Operation of product with incorrect fuel or lubricants, (2) Incorrect usage of machine or misuse, (3) Lack of maintenance, (4) Negligence, (5) Accident or physical damage, (6) Repairs made by unauthorized parties and/or with unauthorized parts, (7) Improper set up, adjustments, tampering or altered products

Note: The purchase is not contingent upon a product demonstration. The purchaser shall satisfy himself with the product, including any product demonstration or verification of any function, before buying. KisanKraft Limited or its authorized dealers, including online sellers, shall not be liable to give any on-site demonstration after purchase of any of the product

This warranty is null & void, if you fail to register the warranty with KisanKraft by sending the KisanKraft Copy with dealer's stamp. KisanKraft Machine Tools Private Limited

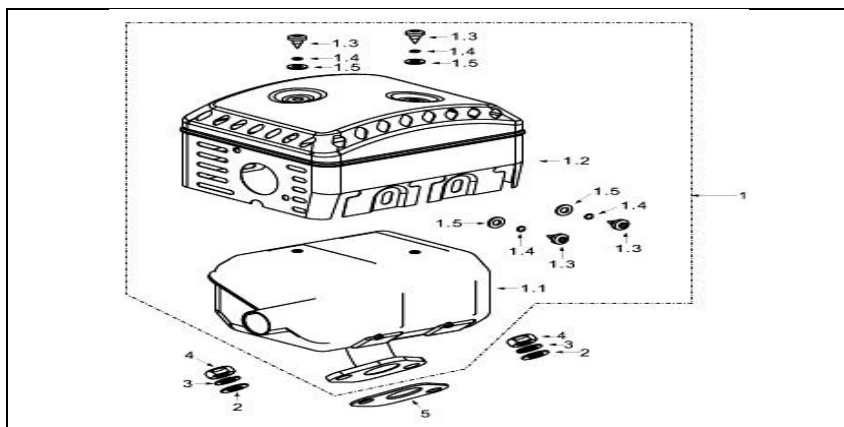
Sl. No	Ref No.	Part Name	Part No
1	68F-1.26.1000A	Muffler Assembly	11-1
1.1	68F-1.26.1001	Muffler body	11-1.1
1.2	68F-1.26.1002A	Protector Muffler -A	11-1.2
1.3	GB818	Screw M5 x 8	11-1.3
1.4	GB93	Spring washer Φ5	11-1.4
1.5	GB9 7	Washer Φ 5	11-1.5
2	GB97	Washer Φ 8	11-2
3	GB93	Spring Φ 8	11-3
4	GB6170	Nut M8	11-4
5	68F-1.07.0011	Gasket (Exhaust Part)	11-5

Fuel Tank-kerosene Engine



Sl. No	Ref No.	Part Name	Part No
1	68F-1.20.1000-A	Air Cleaner Assembly	10-1
1-1	68F-1.20.1100-H	Air Cleaner Seat Ass.	10-1.1
1-1.1	68F-1.20.1101-D	Air Cleaner seat	10-1.1.1
1-1.2	68F-1.20.1102-H	Seal Ring	10-1.1.2
1-1.3	68F-1.20.1103-H	Cover board	10-1.1.3
1-1.4	GB818	Screw M4 x 12	10-1.1.4
1-2	68F-1.20.1200-H	Filter Assembly	10-1.2
1-2.1	68F-1.20.1201-H	Foam Filter	10-1.2.1
1-2.2	68F-1.20.1202-H	Papery Filter	10-1.2.2
1-2.3	68F-1.20.1203-H	Rubber Fixer	10-1.2.3
1-2.4	68F-1.20.1204-H	Decal Washer	10-1.2.4
1.3	68F-1.20.1004-A	Filter Case	10-1.3
1.4	GB62-88A	Butter Fly nut M6	10-1.4
1.5	68F-1.20.1007-H	Seal Ring 32x47x3	10-1.5
1.6	68F-1.20.1008	Air duck	10-1.6
2	GB6177	Nut M6	10-2

Muffler Parts



Important: (1) Normal maintenance and adjustments to the product is the responsibility of the customer. (2) Normal wear and tear is not covered under warranty. (3) Rubber/plastic parts and consumables such as blades, clutch and clutch-bell, spark-plugs, nylon line, air-filters, fuel-filters, oil seals etc. are not covered under the warranty.

No Warranty On Electrical Motor / Electrical Parts/Battery Etc.

Incidental / Consequential Loss: KisanKraft Machine Tools Private Limited or its manufacturers will not be liable for general damages, including bodily injuries, or for incidental or consequential damages including, but not limited to, loss of use, loss of profits, loss of production, expense of substitute equipment or other commercial loss or damage.

Limitation of Liability: This limited warranty is in lieu of all other express warranties, obligations, or liabilities. Any implied warranties, obligations or liabilities, including, but not limited to, any implied warranty of merchantability shall be limited in duration to the applicable warranty period. Any action for breach of any warranty hereunder, including, but not limited to, any implied warranty of merchantability must be brought within the applicable warranty period.

Modifications of Warranty: No agent, representative, dealer, or employee of KisanKraft Machine Tools Private Limited or any of its manufacturers has the authority to increase or alter the obligations of this warranty.

Assignment / Transfer of warranty: The warranty cannot be assigned and shall not transfer if the product is resold by the first buyer. The above warranties are extended to the first end user (original purchaser), and no warranty is made, nor authorized to be made assignable on resale by the first end user.

What you must do to obtain limited warranty service: To obtain performance of any obligation under this warranty for failure during the applicable warranty period, deliver the defective product, to the nearest Authorized Dealer. KisanKraft Machine Tools Private Limited, its manufacturers and its dealers reserve the right to inspect the claimed defective part(s) to determine if the malfunction is the result of a defect covered by this warranty. Please note that the decision of KisanKraft Machine Tools Pvt Ltd with respect to any warranty claim is final.

Receipt is required for availing warranty services

Jurisdiction: All disputes are subject to Bangalore court's jurisdiction.

Our Products

- ◆Chainsaws◆Brush Cutters and Accessories◆Harvesters◆
- ◆Engines and Water Pumps◆Hand Tools◆Garden Tools◆
- ◆Cultivators and Accessories◆Sprayers and Accessories◆
- ◆Transplanter and Post Hole Digger ◆Milking Machines◆

This warranty is null & void, if you fail to register the warranty with KisanKraft by sending the KisanKraft Copy with dealer's stamp.
KisanKraft Machine Tools Private Limited

BEFORE GETTING STARTED

Thank you for your purchase and use of our product. In order to avoid accidents or injury **please read and understand the instructions given in this manual carefully** before attempting to assemble or operate the machine. After reading, preserve it for further reference.

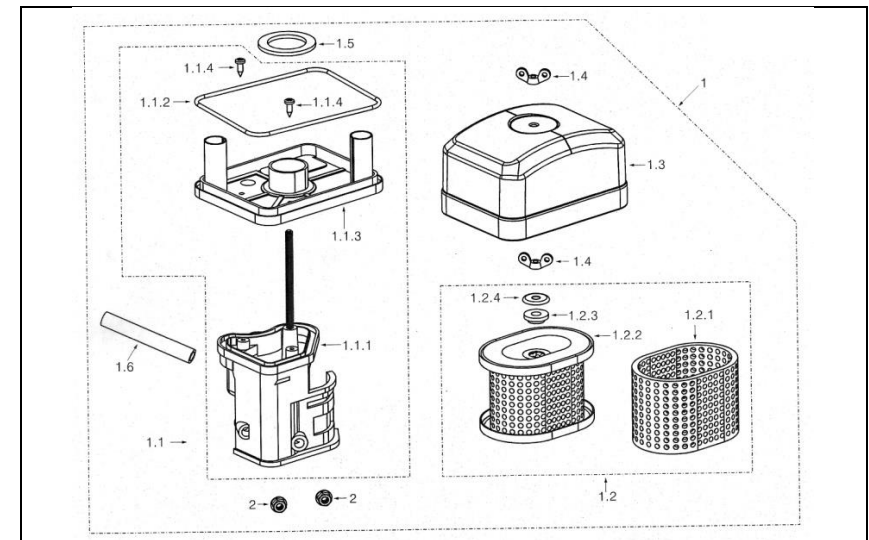
NOTE: Engine is not included with this product. It needs to be purchased separately

SAFETY INSTRUCTIONS

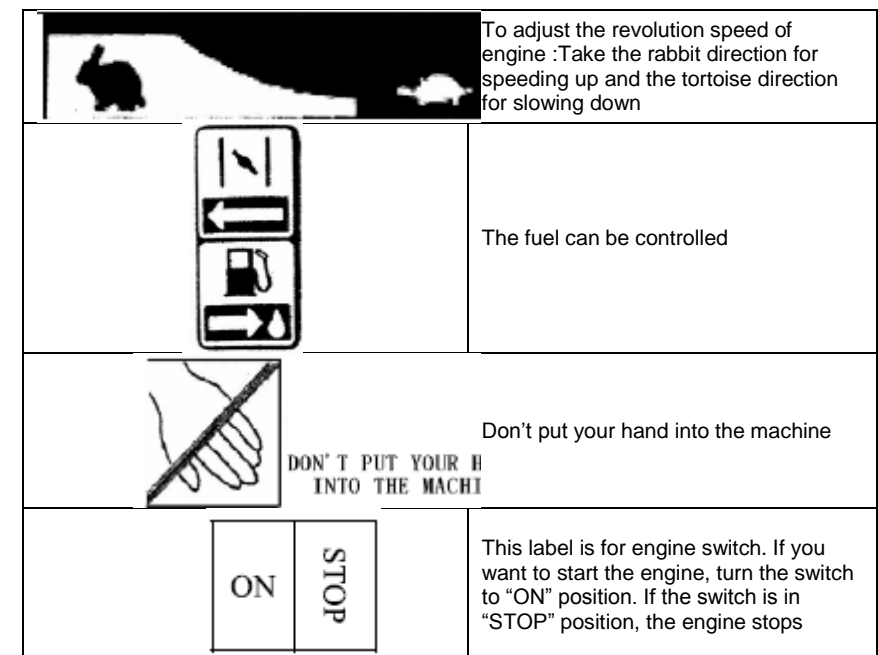
	Read the operation manual
	Danger from rotating blades. Keep your hands and feet out of openings while machine is running
	Keep bystanders away
	Check if any fuel spills or leaks. Stop the engine before refuel.
	Exhaust gas contains poisonous carbon monoxide. Never run the generator in an enclosed area. Be sure to provide adequate ventilation. When installed in ventilated place care should be taken to avoid working downwind of exhaust.

Sl. No	Ref No.	Part Name	Part No
1-22	68F-1.10.1017	Fuel Valve	9-1.22
1-23	68F-1.10.1018	Handle Bar	9-1.23
1-24	68F-1.10.1019	Spring Washer- big	9-1.24
1-25	68F-1.10.1020	Upper cover	9-1.25
1-26	GB93	Spring washer-small 3	9-1.26
1-27	GB818	Screw M3x7	9-1.27
2	68F-1.20.0001	Steel gasket	9-2
3	68F-1.10.0003	Gasket carburetor	9-3
4	68F-1.10.0001	Block Carburetor	9-4
5	68F-1.07.0010	Gasket, inlet port	9-5

Air Cleaner (Hemi -Dry type)



Sl. No	Ref No.	Part Name	Part No
1-3.1	68F-1.10.1201	Chock Valve cap	9-1.3.1
1-3.2	68F-1.10.1202	Chock Valve axis	9-1.3.2
1-3.3	68F-1.10.1203	Chock Valve	9-1.3.3
1-4	68F-1.10.1300	Measure hole Assembly idle speed	9-1.4
1-4.1	68F-1.10.1301	Measure hole, idle speed	9-1.4.1
1-4.2	68F-1.10.1302	O-ring 4.7x1	9-1.4.2
1-5	68F-1.10.1400	Adjustment Screw Assembly mixture ratio	9-1.5
1-5.1	68F-1.10.1401	Adjustment screw, mixture ratio M4x12	9-1.5.1
1-5.2	68F-1.10.1402	Spring	9-1.5.2
1-6	68F-1.10.1002	Adjustment screw Idle speed	9-1.6
1-7	68F-1.10.1003	Fuel Floater	9-1.7
1-8	68F-1.10.1004	Pin Fuel Floater	9-1.8
1-9	68F-1.10.1500	Needle Valve Assembly	9-1.9
1-9.1	68F-1.10.1501	Needle Valve seat	9-9.1
1-9.2	68F-1.10.1502	Needle Valve	9-9.2
1-9.3	68F-1.10.1503	Spring, Needle valve	9-9.3
1-10	68F.10.1005	Main Jet	9-1.10
1-11	68F.10.1006	Main Measuring hole	9-1.11
1-12	68F-1.10.1007	Fuel inlet Tube	9-1.12
1-13	68F-1.10.1008	Rubber seal (Fuel cup)	9-1.13
1.14	68FK1.10.1009	Fuel cup	9-1.14
1-15	68F-1.10.1010	Fuel drain plug	9-1.15
1-16	68F-1.10.1011	Gasket fuel drain plug	9-1.16
1-17	68F-1.10.1012	Tighten bolt (Fuel cup)	9-1.17
1-18	68F-1.10.1013	O-ring 11x1.5	9-1.18
1-19	68F-1.10.1014	Hand grip chock valve Assembly	9-1.19
1-20	68F-1.10.1015	Sediment cup	9-1.20
1-21	68F-1.10.1016	O-ring 21x2	9-1.21



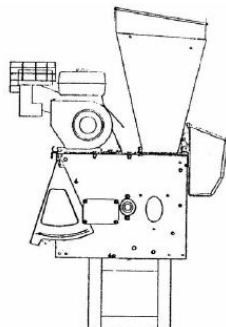
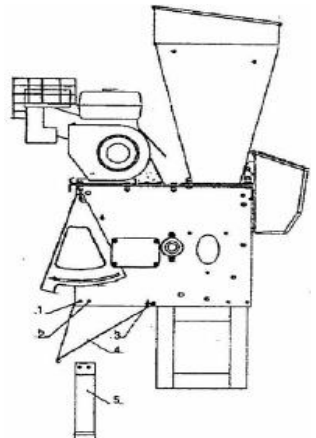
Safety warnings

- Be extremely cautious with the rotating blades in the machine.
- Never allow hand, foot, or any part of the body enter the hopper or touch the blades.
- Never place hand, foot, or any part of the body close to discharge opening while the machine is in operation.
- Do not peep into hopper or discharge opening while the machine is running.
- Never allow metal objects or something similar enter into the machine.
- Never allow children to operate the machine.
- Never operate your shredder-chipper under the influence of alcohol, drugs or any other medication which may cause drowsiness, lack of concentration, etc.,
- Never assemble or disassemble any parts of the machine during operation.
- Never allow bystanders, children, pets in operation zone. Keep them minimum 15meters away.
- Never run the machine in an enclosed area since exhaust contains poisonous carbon monoxide.
- Never wear loose clothes or long jewellery and keep your long hair under a headgear while operating the machine.
- Never operate the machine on slopes.

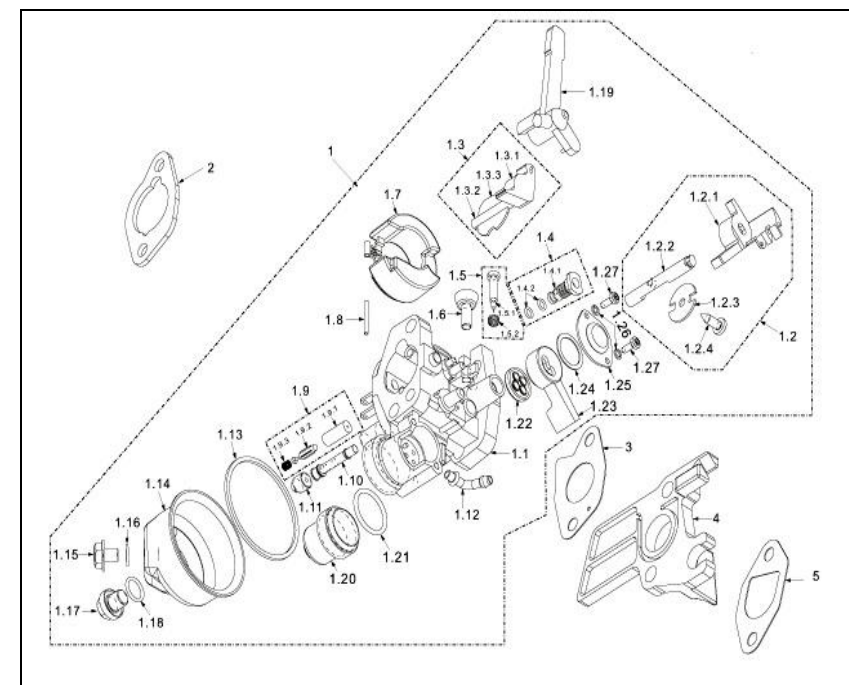
ASSEMBLY INSTRUCTIONS

Unpack and remove all the items from the packing and check if any part is missing, contact your dealer immediately.

Assembly should be done on a clean, level surface with a helper.

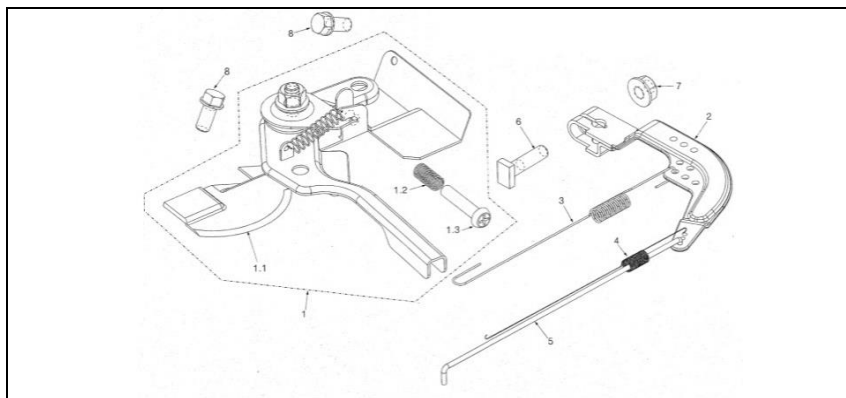
<p>1. Remove the machine from the packing and put it on a wood shelf.</p>	
<p>2. Attaching the front foot to the basic machine.</p> <ol style="list-style-type: none"> Remove the nuts from bolts 1, 2 and remove the bolts and pipe spacer. Forward the parts box to make the long pin 3 clear. Pull the discharge hopper out of the parts box and align holes 1, 2. Hitch front foot to the side board of the parts box and align the mounting holes with holes 1 and 2. Put the pipe spacer that was removed in step 1 back in place. Insert the bolts and secure them tightly with gaskets and nuts. 	

Carburetor Parts



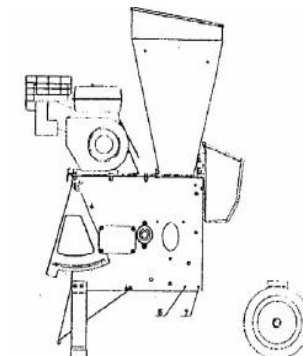
Sl. No	Ref No.	Part Name	Part No
1	68FK.10.1000	Carburetor Assembly	9-1
1-1	68F-1.10.1001	Carburetor Body oil	9-1.1
1-2	68F-1.10.1100	Throttle Valve Assembly	9-1.2
1-2.1	68F-1.10.1101	Throttle Valve Cap	9-1.2.1
1-2.2	68F-1.10.1102	Throttle Valve axis	9-1.2.2
1-2.3	68F-1.10.1103	Throttle Valve	9-1.2.3
1-2.4	68F-1.10.1104	Screw M4x12	9-1.2.4
1-3	68F-1.10.1200	Chock Valve Assembly	9-1.3

Speed Adjustment Base Parts

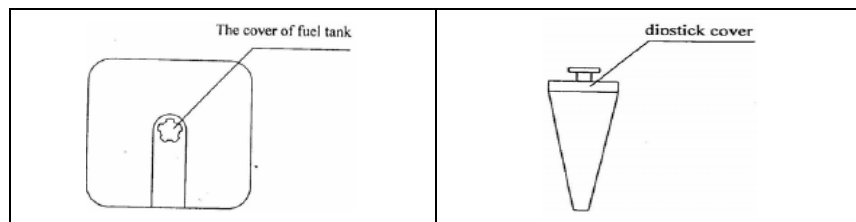


Sl. No	Ref No.	Part Name	Part No
1	68F-1.53.0000	Speed Adjustment base part	8-1
1-1	68F-1.53.1000	Speed Adjustment Base Ass.	8-1.1
1-2	68F-1.53.0002	Adjustment Spring	8-1.2
1-3	GB823	Adjustment Screw	8-1.3
2	68F-1.51.0004	Speed Adjustment arm	8-2
3	68F.51.0007	Return Spring	8-3
4	68F-1.51.0008	Fine Adjustment Spring	8-4
5	68F-1.51.0006	Pulling Rod	8-5
6	68F-1.51.0005	Quadrate bolt M6x21	8-6
7	GB6177	Nut M6	8-7
8	GB5787	Bolt M6 x 12	8-8

3. Attaching axle bracket, axle and tires:
 - i. Remove the wood shelf.
 - ii. Disassemble the bolt7 and pipe spacer.
 - iii. Put the rear axle brackets in place and align the mounting hole with holes 6 and 7.
 - iv. Insert M8x20 bolt in hole6 from outside to inside and secure it gasket and nut.
 - v. Reassemble the pipe spacer and the long bolt 7 and secure it tightly with gasket and nut. Then screw the nut tight in 6 place.



4. Attaching the chipper tube to the basic machine.
 - i. Put the chipper tube 2 in place on the side of the basic machine. Align the three mounting holes in the flange with three holes around place 1.
 - ii. Secure the flange with gaskets and nuts M8. Make sure the chipper tube has no deflection before tightening the nuts.
5. Mounting the discharge grid:
 - i. Remove the thumbscrews on both sides of the movable door on the highest position. Hook the grid on the axis of the door and clamp the grid with the spring to prevent the grid from falling off.
 - ii. Put lower part of the grid outside of lower axis in the discharge opening. Tighten the screws M5X15 on the left and right side of discharge opening to fix the grid.
6. Mounting frame:
 - i. The steel flame can be used as handle grip. Firstly attach the steel bar on left and right side of hopper using screws. Please do not tighten the screws.
 - ii. Put the flame on the bars and fix it by tightening the screws. Then tighten the screws on the hopper.
7. Safety instructions for machine with bagging attachments:
 - i. Cover the discharge opening with nylon bag and tighten the tie so that when the machine is working then it will be easy to collect the chips that enter the bag.
8. Check all the screws, bolts, nuts and tighten them if loose.
9. Add fuel to the engine.
 - i. New engine does not contain oil in it.
 - ii. Open the cover of fuel tank and add pure gasoline. Do not fill closer than 10mm to 15mm from the top of the fuel tank.
 - iii. Open the cover and pull the dipstick out.

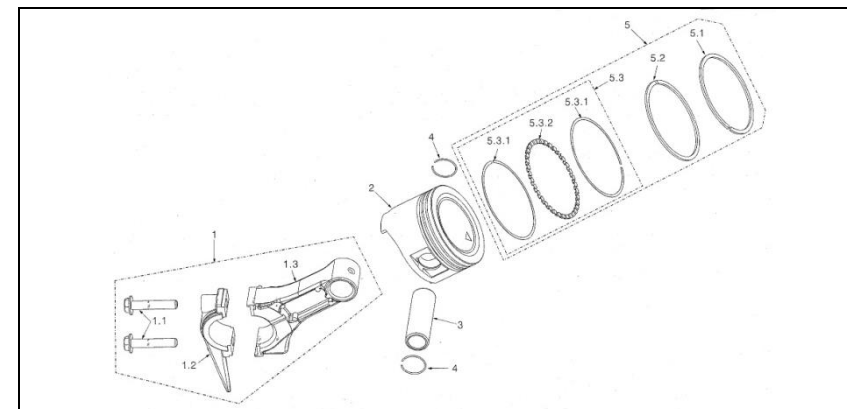


iv. Refer to the engine manual for instructions on adding fuel.

PREPARATION BEFORE OPERATION

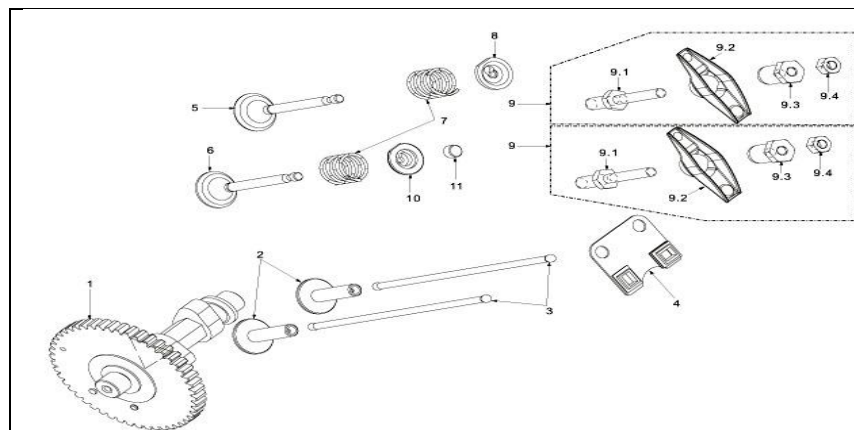
1. Check the machine is in proper working condition after starting engine.
2. Make sure the plastic cover on upper hopper is closed when your shredder is running as flying chips are very hazardous.
3. Do not use hands or metal tools but wood stick instead to push the material into feed hopper.
4. Keep your face and body away from the feed intake opening.
5. Do not allow hands or any other parts of the body or clothing inside the feeding hopper discharge chute or other rotating parts.
6. Do not touch the muffler in operation since the temperature of muffler surface is so high that there is high risk of getting burns.
7. Keep proper balance and footing at all times. Do not overreach. Never stand at a higher level than the base of the machine when feeding material into it.
8. The operator should be extremely careful that pieces of metal, stone, glass or other foreign objects are not put into the intake opening together.
9. Please check if there is abnormal noise or shaking in the machine. If so please turn off the engine immediately and solve problem. Check for any loosened parts or damaged parts. Repair or replace with parts having equivalent specifications.
10. Big branches are fed comparatively slowly and branches larger than the yellow ring on hopper can't be put into the machine.
11. Do not allow processed material to build up in the discharge zone, as this may prevent proper discharge and can result in kickback of material through the feed intake opening.
12. If the machine becomes clogged, shut off the power source before clearing the debris. Keep the power source clear of debris and other accumulations to prevent damage to power source or possible fire.
13. Never put anything on the cover of hopper in case it will fall into machine.
14. Make sure the opening of chipping tube is always covered while not at work.
15. To move the machine, firmly hold the handle by both hands .step on the shaft on rear wheel with one foot, lift the front of the machine. Pay attention to barycenter of the machine, walk slowly forward and backward or turn around.
16. Before operating the machine, please check the direction of the wind and avoid working downwind of exhaust.
17. Keep all guards and deflectors in place and in good working condition.
18. Turn off machine before transporting
19. Do not tilt the machine while the engine is running.

Piston



Sl. No	Ref No.	Part Name	Part No
1	68F-1.02.3000	Connecting rod Assembly	7-1
1-1	68F-1.02.3003	Bolt connecting rod M7x35	7-1.1
1-2	68F-1.02.3002	Cover, connecting rod	7-1.2
1-3	68F-1.02.3001	Body, connecting rod	7-1.3
2	68FK.02.1001	Piston	7-2
3	68F-1.02.1002	Piston Pin	7-3
4	68F-1.02.1003	Clip Piston Pin	7-4
5	68F-1.02.2000	Piston Ring Assembly	7-5
5-1	68F-1.02.2001	First air ring	7-5.1
5-2	68F-1.02.2002	Second air ring	7-5.2
5-3	68F-1.02.2100	Oil ring Ass.	7-5.3
5-3.1	68F-1.02.2101	Scraper ring	7-5.3.1
5-3.2	68F-1.02.2102	Set off ring	7-5.3.2

Cam Shaft



Sl. No	Ref No.	Part Name	Part No
1	68FK.04.1000	Cam Shaft Assembly	6-1
2	68F.09.0002	Tappet	6-2
3	68F-1.09.0001	Pusher	6-3
4	68F-1.07.0014	Pusher guide	6-4
5	68F-1.07.0001	Intake Valve	6-5
6	68F.07.0002	Exhaust Valve	6-6
7	68F-1.07.0003	Valve Spring	6-7
8	68F-1.07.0004	Spring seat Intake Valve	6-8
9	68F-1.07.2000	Rocker Ass.	6-9
9-1	68F-1.07.2002	Stud Rocker Assembly	6-9.1
9-2	68F-1.07.2001	Rocker	6-9.2
9-3	68F-1.07.2003	Adjust Nut Sphere	6-9.3
9-4	68F-1.07.2004	Lock Nut	6-9.4
10	68F-1.07.0005	Spring Seat Exhaust Valve	6-10
11	68F-1.07.0006	Cap Exhaust valve	6-11

MAINTENANCE AND STORAGE

1. When the machine needs servicing, inspection, and storage turn off the engine. Make sure all the moving parts completely stop and allow 15-20 minutes for the machine to cool down before making any inspections, adjustments, etc.
2. Store the machine where fuel vapors will not reach an open flame or spark. For long time storage, drain the fuel out of the machine. Make sure the machine is cooled completely before storage.
3. When the cutting means need servicing, the cutting means may be moved manually after the machine is stopped.

Additional Safety Instructions for Machine with Bagging Attachment

Before attaching or removing the bag the engine should be shut off. Cover the discharge opening with a fabric bag and tighten the cord in the mouth of the bag. When the machine is working, all the chips come into the bag which is convenient for collection of the chips

WOOD SHREDDER OPERATION

Branch Chipping:

1. Long branches like sunflower stems, corn stems and tree branches etc are fed into the side chipping tube for chipping by the rotating blade
2. Some side shoots and branches have to be trimmed from the main stalk before chipping.
3. Short stubs of branches may be pushed through the chipper section with next branch, but never use your hands.
4. Last branch is pushed inside of the tube by some tools like wood stick. Never try by hand.
5. Never push the small branches by hand, use wood stick instead.
6. When feeding branches, be certain that thicker branches should be pushed more slowly than thin ones. A technique and understanding will have to be acquired for successful shredding.
7. Do not allow an accumulation of processed material to build up under discharge of the shredder-chipper as this can result in clogging. Use wood tools to clear the buildup.
8. Do not put your face close to the feed hopper which may result in injury.
9. Do not stand in front of discharge opening and never attempt to open the outlet of discharge while machine is on operation.
10. Set back the cover to the side tube once chipping is finished

Leaves And Grass Shredding:

1. Leaves and short stalk (bean plants) and similar material should be fed into the hopper and chipped in 16 interlaced chipping lots.
2. Do not open the plastic cover when adding more material.
3. The leaves and similar material is a little hard to go into the hopper. Use a wood stick to push them in instead using hand or other metal bars.
4. Keep your face and body away from the feed hopper to avoid being struck by any material that may bounce back.

5. The discharge area is easily clogged if the material remains more watery or sticky. Always stop the engine before clearing buildup with wood tools. Never use hand or foot.
6. Never attempt to clear all accumulation of processed material when engine is still under operation.
7. Perhaps you get other pretty plants in your garden and the material will be processed to be organic fertilizer as follows:
 - Put the discharge towards a wall large board or other obstruction. Opening the discharge door and remove the screen to allow the processed material pile up. With a garden spade feed this material into the shredder until it reaches the consistency you want.
 - Keep bystanders, pets and children away from the discharge area while the machine is in operation. Set the screen back to the place and close the discharge door when shredding is finished.

SHARPENING THE BLADE

Cutting blade is made of special material and the blade is very sharp after heat treatment. It may be dull after used for some time.

Judgment for Dull Blade: When the chipping sound become very ponderous and the belt always skids while it is not loose or feeding speed gets slow, please remove the blade and check if it is dull.,

1. Turn off the engine before removing the blade.
 - Remove the board covering the blade.
 - Open the small outlet of the discharge
 - Remove the discharge screen.
2. Wearing safety gloves, turn the blade tray to a proper position.
3. Remove the location screw on the two pieces of blade.
4. Sharpen the blade
 - If the blade is struck a break by metal or stone hard subjects, please sharpen the break lot at first.
 - Avoid changing the blade color and anneal when sharpening the blade
 - It may result in a breach on the edge if you overexert.
 - Knifepoint angle should be kept in between 45-40 degrees
 - Two pieces of blade should be kept at the same weight as each other, as they may shake if there is much difference in the weight.
5. Put the blade back to the place where they are removed and tighten with nuts.
6. Replace the board covering the blade.
7. Replace the discharge screen
8. Close the outlet of the discharge.

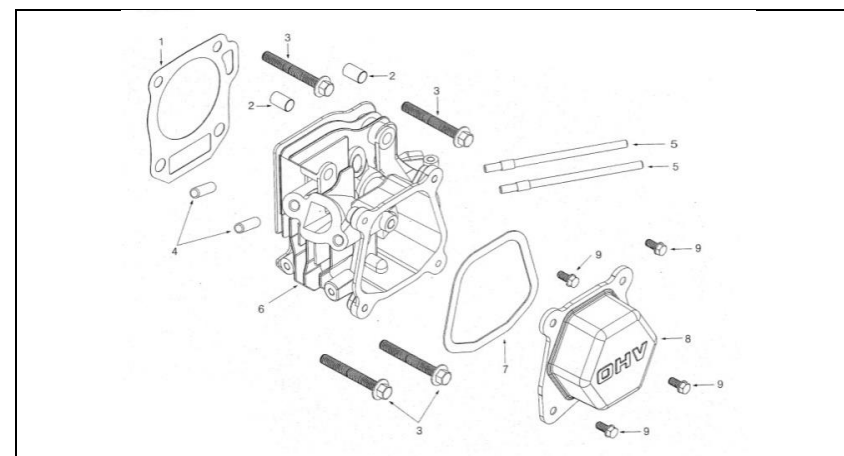
ADJUSTING THE BELT

There is a V belt under belt cover transmitting energy from engine to the blade tray. The belt will be getting loose and skid after used for some time. So tension adjustment is required

1. Turn off the engine and remove the belt cover.

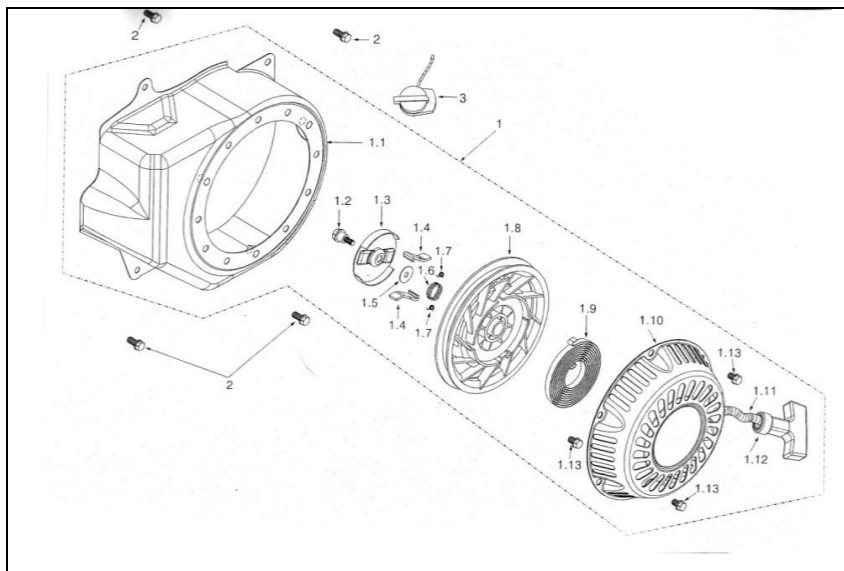
Sl. No	Ref No.	Part Name	Part No
1-11	68F-1.30.0002	Rope	4-1.11
1-12	68F-1.30.0003	Pulley handle	4-1.12
1-13	GB39	Bolt M6X8	4-1.13
2	GB5787	Bolt M6x12	4-2
3	68F-1.34.1000	Engine switch	4-3

Cylinder Head



Sl. No	Ref No.	Part Name	Part No
1	68FK.07.0009	Gasket Cylinder head	5-1
2	68F-1.07.0012	Set pin 10x14	5-2
3	GB5789	Bolt M8 x 60, 22	5-3
4	68F-1.07.0008	Stud Exhaust M8 x 32	5-4
5	68F-1.07.0007	Stud Intake M6 x 113	5-5
6	70F.07.1000	Cylinder head Assembly	5-6
7	68F-1.03.0001	Gasket Cylinder head cover	5-7
8	68F-1.03.1000A	Cylinder head cover	5-8
9	GB5787	Bolt M6x12	5-9

Recoil Starter



Sl. No	Ref No.	Part Name	Part No
1	68F-1.30.0000A	Recoil Starter Assembly (Without fan Cover)	4-1
1-1	68F-1.30.0001	Fan cover	4-1.1
1-2	68F-1.30.0009	Pivot bolt M5 x 17	4-1.2
1-3	68F-1.30.0001	Ratchet guide	4-1.3
1-4	68F-1.30.0004	Ratchet	4-1.4
1-5	68F-1.30.0012	Washer - recoil 5x17x0.5	4-1.5
1-6	68F-1.30.0006	Friction Spoil 16x1	4-1.6
1-7	68F-1.30.0005	Ratchet Spring 5.5x0.2	4-1.7
1-8	68F-1.30.0008	Roller	4-1.8
1-9	68F-1.30.0013	Starter spring	4-1.9
1-10	68F-1.30.0010A	Starter cover	4-1.10

- Loosen the four location nuts on the engine.
- Move the engine forward till the V belt is tight.
- Put the main pulley and affiliated pulley in the same plane (A ruler can be used to measure if lack of experience). Tighten the four location holes on the engine.
- Set the belt cover back to its place.

REPLACING THE BELT

The V belt need to be replaced if it is too long or damaged.

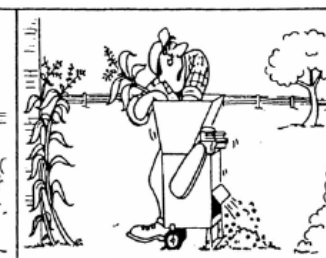
- Turn off the engine and remove the belt remove cover.
- Remove the old belt. Pull the belt outside by tools and turn the pulley gradually to remove the pulley.
Note: Please mind your finger.
- Place the new belt in the main pulley first (V belt on the engine) and then to the affiliated pulley beside the blade tray.
- The new belt is tighter than the old one. To assemble the new one is not as easy as to remove the old one. When you hold the belt into the slot, do not put your finger between the pulley and belt which may result in injury.
- Replace the belt cover.

RIGHT WAY



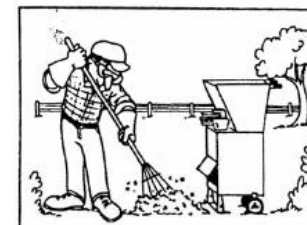
Do stand back - wear glasses and gloves

WRONG WAY



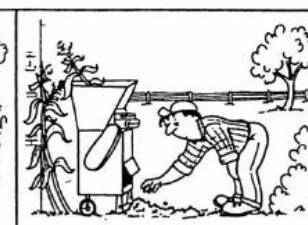
Don't allow hands to enter hopper or peer into hopper with face.

RIGHT WAY

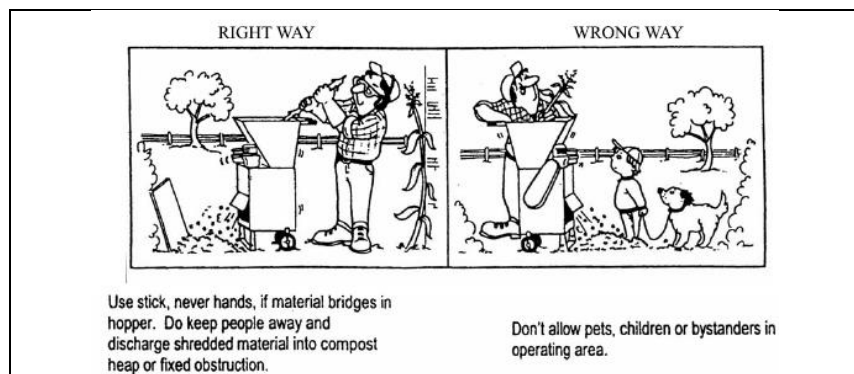


Do clear discharge area of machine with spade, rake or long handle tool.

WRONG WAY



Don't clear discharge with hands. Never place any part of your body in discharge area.



TECHNICAL SPECIFICATIONS

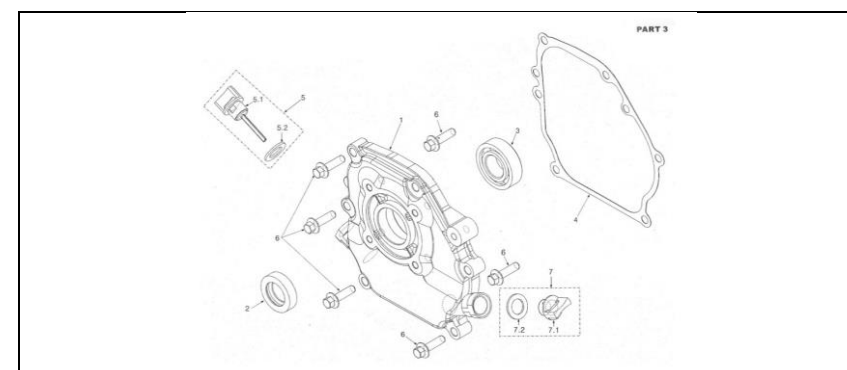
Main dimension (LXWXH)	760x730x1130 mm
Net weight	80 kg
Fuel tank volume	3600 cm ³
Oil tank volume	600 cm ³
Max cutting speed	2000/min
Engine (your choice)	KK-GE-200
Chipping width	30 mm
Chipping knives	2
Chipping capacity	0.5-1CBM/Hour
Shredding hammer blades	16
Shredding screen holes	25 mm
Shredder capacity	1-2 CBM/Hour

NOTE:

The customer can buy engine of his choice. Here we have chosen to use KK-GE-200.

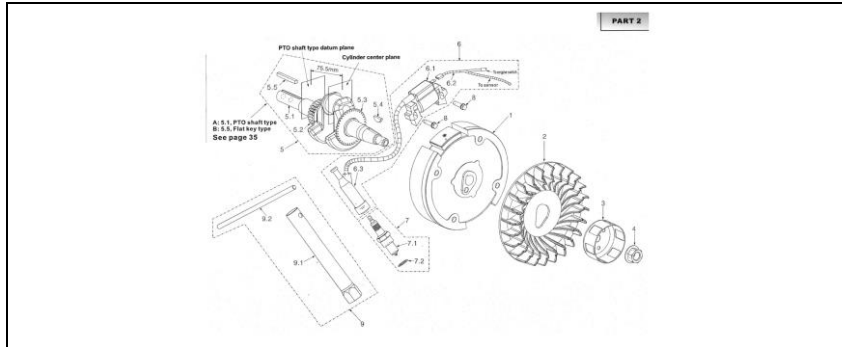
Sl. No	Ref No.	Part Name	Part No
7-2	68F-1.06.2002	Washer, Spark Plug	2-7.2
8	GB5787	Bolt 6 x 25	2-8
9	68F-1.90.0000	Tools	2-9
9.1	68F-1.90.0001	Wrench, Spark plug	2-9.1
9.2	68F-1.90.0003	Handle	2-9.2

Crankcase Cover Parts



Sl. No	Ref No.	Part Name	Part No
1	68F-1.01.2001	Crankcase cover	3-1
2	68F-1.01.0002	Oil Seal 25x41.25x6	3-2
3	GB/T 276-94	Ball Bearing 6205	3-3
4	68F-1.01.0001	Gasket crankcase	3-4
5	68F-1.01.2100	oil gauge assembly	3-5
5-1	68F-1.01.2101	Oil Gauge	3-5.1
5-2	68F-1.01.2102	seal-oil gauge	3-5.2
6	GB5787	Bolt M8 x 30	3-6
7	68F-1.01.2200	Oil Plug assembly	3-7
7-1	68F-1.01.2201	Oil plug	3-7.1
7-2	68F-1.01.2102	Seal Oil Plug	3-7.2

Crankshaft (Oil Sensor)



Sl. No	Ref No.	Part Name	Part No
1	68FK-1.05.2000	Fly Wheel Assembly	2-1
2	68F-1.05.0001	Fly Wheel Fan	2-2
3	68F-1.05.0002	Starter Sleeve	2-3
4	GB6177	Nut Fly wheel Assembly	2-4
5	68F.05.1000-X	Crankshaft Assembly.	2-5
5-1	68F.05.1000-X	Crank Shaft	2-5.1
5-2	68F-1.05.1002	Timing Gear	2-5.2
5-3	68F-1.05.1003	Governor Gear	2-5.3
5-4	GB1099-79	Woodruff key	2-5.4
5-5	68F-1.05.1005-X	Flat Key	2-5.5
6	68F-1.06.1000	Ignition Coil Assembly	2-6
6-1	68F-1.06.1001	Ignition Coil	2-6.1
6-2	68F-1.06.1002	Stop lead	2-6.2
6-3	68F-1.06.1003	Spark Plug Cap	2-6.3
7	68F-1.06.2000	Spark Plug Assembly.	2-7
7-1	68F-1.06.2001	Spark plug	2-7.1

**OPERATION MANUAL-ENGINE
(Engine-Petrol Start Kerosene Run)**



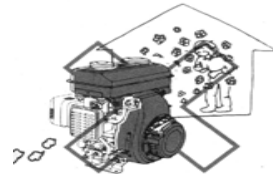
KK-GE-200

BEFORE GETTING STARTED

Thank you for your purchase and use of our products. In order to avoid accidents or injury, **please read this manual carefully** before using the machine. After reading, preserve it for further reference.

SAFETY INSTRUCTIONS

1. Please do not use this engine inside an enclosed area. Ensure adequate ventilation while Engine is in operation.
CAUTION: Exhaust contains POISONOUS Carbon Mono Oxide gas



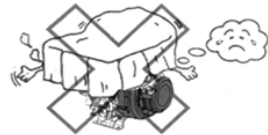
2. To prevent fire hazard, please keep the Engine in operation at least 1-meter (3 feet) away from Combustible or Inflammable materials, buildings and equipment.



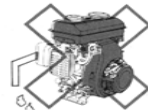
3. When refueling you must STOP the Engine. Please do not smoke near Engine. Wipe the spilled fuel after refueling.
CAUTION: Spilled fuel is a fire hazard.



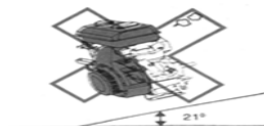
4. Do NOT cover the Engine when in operation!



5. Do NOT connect any pipe to exhaust muffler!



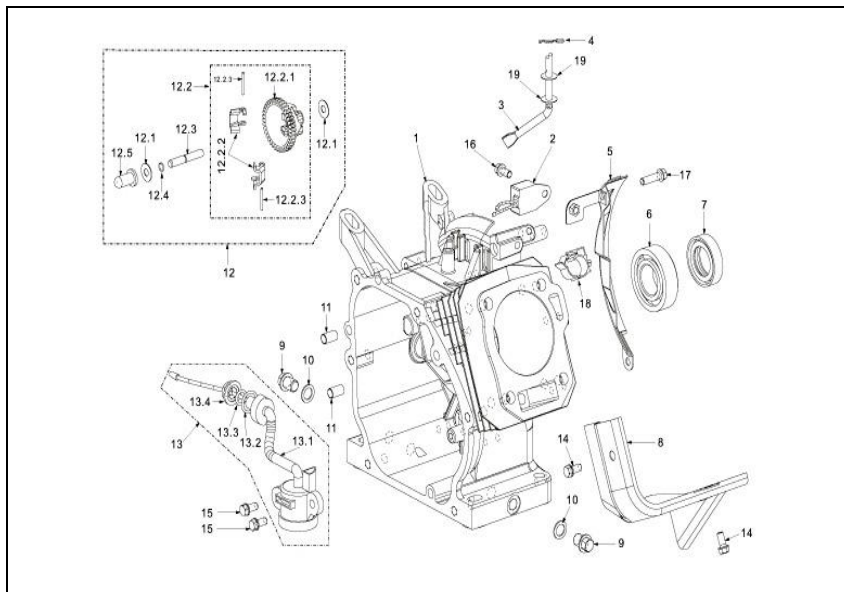
6. Do NOT tilt the Engine more than 21 degrees.



Sl. No	Ref No.	Part Name	Part No
10	68F-1.01.0005	Washer Drain bolt	1-10
11	68F-1.01.0003	Set pin 8x14	1-11
12	68F-1.50.0000	Centrifugal gear (set)	1-12
12-1	68F-1.50.0004	Washer, slip cap 6x15x0.5	1-12.1
12-2	68F-1.50.1000	Centrifugal gear Assembly	1-12.2
12-2-1	68F-1.50.1001	centrifugal gear	1-12.2.1
12-2-2	68F-1.50.1003	Centrifugal block	1-12.2.2
12-2-3	68F-1.50.1004	pin, centrifugal block	1-12.2.3
12-3	68F-1.50.0001	Centre axis	1-12.3
12-4	68F-1.50.0002	Clip centre axis	1-12.4
12-5	68F-1.50.0005	Slip cap	1-12.5
13	68F-1.40.1000	Oil sensor Assembly	1-13
13-1	68F-1.40.1001	Oil sensor Body	1-13.1
13-2	GB 3452. 1-92	O-Ring 17 x 2	1-13.2
13-3	GB 3452. 1-92	O-Ring 11 x 2	1-13.3
13-4	GB6170	Nut M10	1-13.4
14	GB5787	Bolt M6 x 10	1-14
15	GB5787	Bolt M6 x 14	1-15
16	GB5787	Bolt M6 x 12	1-16
17	GB5787	Bolt M6 x 20	1-17
18	68F-1G.01.3004	Rubber wire hoop	1-18
19	68F-1.50.0004	Washer Slip Cap 6x15x0.5	1-19

PARTS DIAGRAM & LIST-KK-GE-200

CRANKCASE



Sl. No	Ref No.	Part Name	Part No
1	68FK.01.1001	Crankcase Body	1-1
2	68F-1.40.2000	Current Amplifier	1-2
3	68f-1.51.0001	Sway bar	1-3
4	68F-1.51.0003	Split Clip	1-4
5	68F-1G.01.3000	Side Plate	1-5
6	GB/T 276-94	Ball Bearing 6205	1-6
7	68F-1.01.0002	Oil seal 25x41.25x6	1-7
8	68F-1.60.0001	Wind guide	1-8
9	68F-1.01.0004	Drain bolt	1-9

ENGINE COMPONENTS

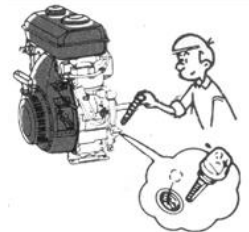
<p>KK-GE-100/160</p> <ol style="list-style-type: none"> 1. Recoil Starter 2. Engine Switch 3. Fuel Tank 4. Kerosene Tank Cap 5. Petrol Tank Cap 6. Spark Plug 7. Oil Alert Lamp 8. PTO Shaft 9. Engine Oil Filter Cap 10. Engine Oil Drain Bolt 11. Air Cleaner 12. Choke 13. Muffler 14. Fuel Cock 15. Throttle Weaver 16. Drain Cock 	
<p>KK-GE-200</p> <ol style="list-style-type: none"> 1. Throttle Lever 2. Engine Drain Bolt 3. Drain Cock 4. Choke Rod 5. Air Cleaner 6. Petrol Tank Cap 7. Kerosene Tank Cap 8. Fuel Cock 9. Engine Oil Filter Cap 10. Engine Switch 11. Spark Plug 12. P.T.O. Shaft 13. Muffler 14. Fuel Tank 15. Recoil Starter 	

OPERATION

Pre-Operation Checks

Oil Level:

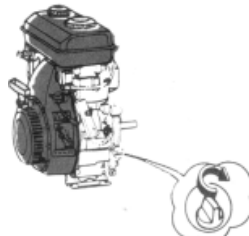
Please check the Engine Oil Level by putting the engine on a flat surface



If the oil level looks low, please check the Oil Level.
Add oil to the recommended level



Remember to tighten the Oil cap!



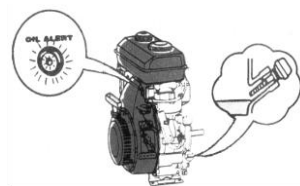
Recommended Engine Oil

If the OIL level in crankcase falls below a safe limit, then Oil Alert level system will automatically turn off the Engine.

NOTE: The Engine will not start if the Oil Alert Level System has turned off the Engine.

You will need to fill OIL to the recommended level, before you can restart the Engine.

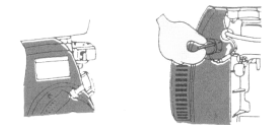
SAE 10W-40 or SAE 20W-40
API Classification: SF Minimum



TROUBLE SHOOTING

The engine does not start:

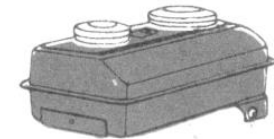
1. Is the Engine SWITCHED – OFF?



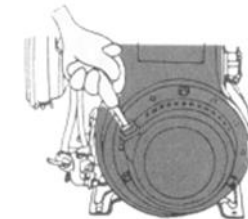
2. Check Engine OIL level. Is it low?



3. Check both fuel levels



4. Is the fuel reaching the carburetor?

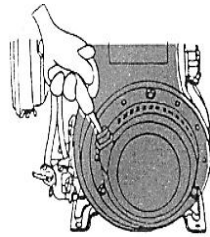


5. Is there good spark in the Spark Plug?

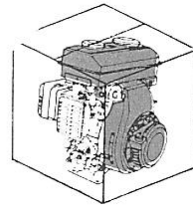


6. If you are still not able to start it, please take the engine to the authorized dealer.






7. Pull the recoil starter slowly until resistance is left



8. Pack it in a closed box and store it.

TECHNICAL SPECIFICATIONS

	 KK-GE-200
Engine Type	4-Stroke, Air-cooled, 1-Cylinder, Side Valve
Displacement	196 cc
Bore x Stroke	68 x 54 mm
Compression Ratio	4.5 : 1
Fuel	Petrol Start – Kerosene Run
Rated Power	2.6 kW @ 3600 RPM
Max Torque	0.8 Kg.m./2500 RPM
Ignition System	Non-contact TCI
Ignition Timing	20° BTDC
Air Cleaner	Semi-dry, oil bath, dual, double silent and cyclone type
Kerosene Tank	4 L
Petrol Tank	0.4 L
Lube Oil Tank	0.7 L
PTO Shaft	Keyway and internal
PTO Shaft Rotation	Counter clockwise from drive's end
Dry Weight	18 Kg
Dimensions	312*362*335 mm

Note: KK-GE-200 is BIS: ISI certified engine

Fuel Level:

Check the fuel level before starting the Engine.

Add fuel, if the level is low
Fill fuel to the shoulder of fuel filter.

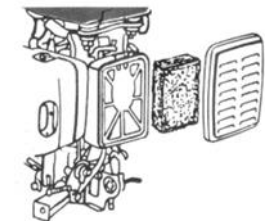
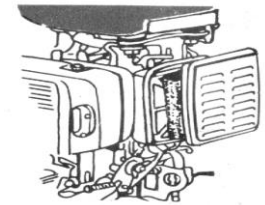
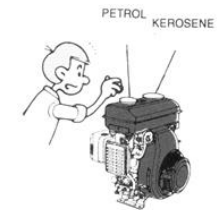
CAUTION:

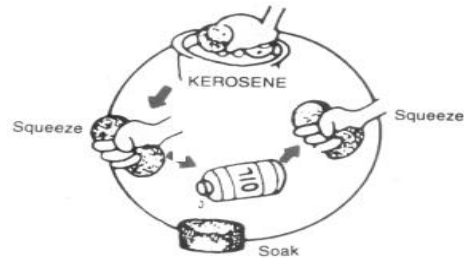
- (1) Do not put Kerosene in Petrol tank, otherwise Engine will be very hard to start.
- (2) Do not put Petrol with Oil-mixed in it.
- (3) Do not put dirty, contaminated fuel

Air Filter:

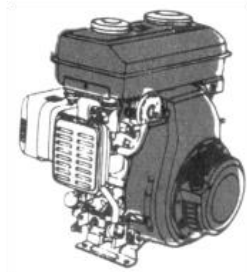
Open Air-cleaner cover and remove the air cleaner element.

Check for dust/dirt in the air filter.
If it is dirty you should clean it as shown below.



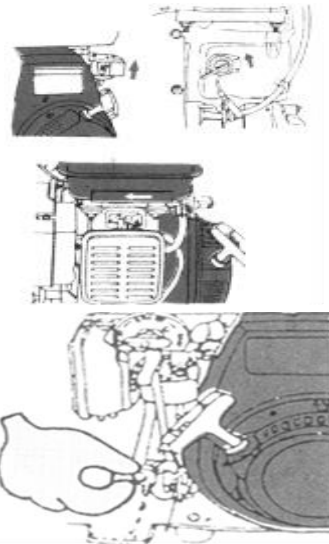


Clean air filter element and refit it in the Air-filter of the engine.



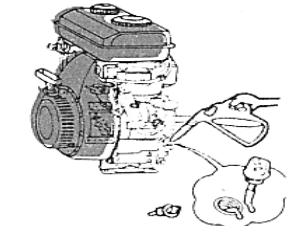
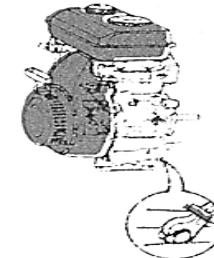
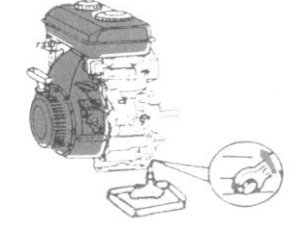
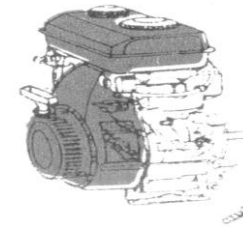
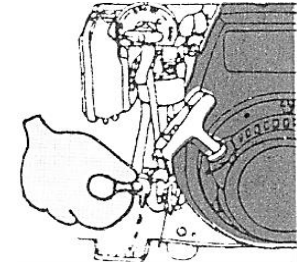
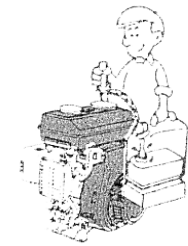
Starting the Engine (COLD START):

1. Turn the Engine switch to ON position
2. Put the choke in the shown position.
3. Turn the Drain Cock to ON position and drain the Kerosene from the carburetor.
4. Turn the Drain Cock to OFF position after you have drained the Kerosene.
5. Return the Kerosene to the Kerosene Tank.



STORAGE

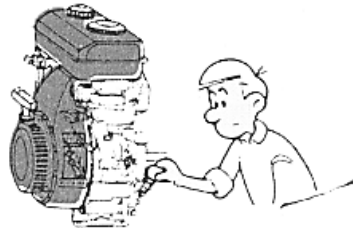
1. Drain the fuel from 2 fuel tanks
2. Drain fuel from Carburetor
3. Remove the Oil Filter cap
4. Remove the drain bolt and drain the oil
5. Close the oil drain bolt and tighten it
6. Fill new recommended oil to the max level



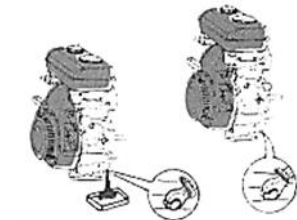
- If you are in dusty environment, service more frequently
- Always use genuine spare parts and take it for servicing to authorized dealers.

Oil Change:

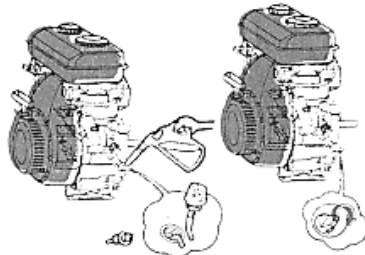
Remove Oil Filter cap



Remove the drain bolt, and drain the old oil.



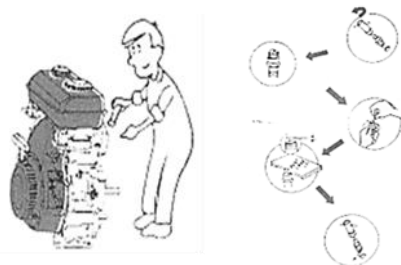
1. Tighten the drain bolt.
2. Fill the new Recommended Oil to the maximum level (neck of the oil filler)
3. Tighten the Oil Filler cap.



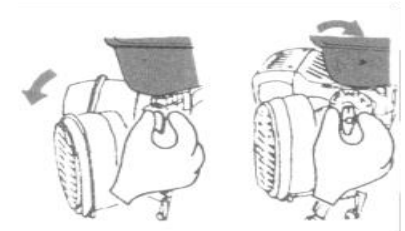
Spark Plug:

1. Remove the Spark Plug
2. Clean the carbon deposits
3. Measure the gap – it should be 0.6-0.7 mm
4. If necessary, replace the spark plug

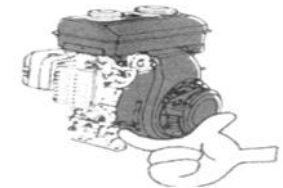
Note: Always use genuine spare parts only.



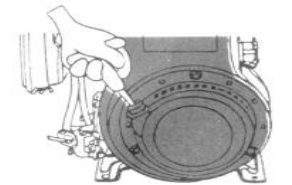
6. Turn the Fuel Cock to START / ON position



7. Increase the throttle (accelerator) level slightly
8. Make sure that there is no (minimum) load attached to the Engine



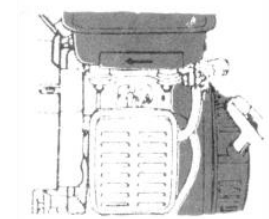
9. Pull the starter grip, until you feel the resistance
10. Then pull the rope fast
11. Do not leave the rope. Do not allow rope to snap back.
12. Return the rope slowly, by hand, to the recoil starter



13. Turn the fuel cock to RUN position.

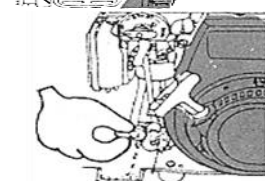


14. Close the choke as indicated on the Engine.

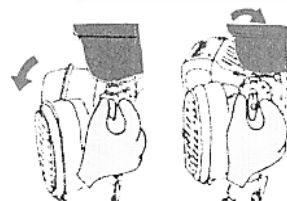


Starting the Engine (HOT START):

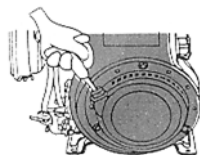
1. Turn the Engine switch to ON position
2. Close the choke as indicated on the Engine
3. Raise the throttle lever slightly
4. Make sure that there is no (minimum) load attached to the Engine.



5. Turn the Fuel Cock to RUN / ON position.

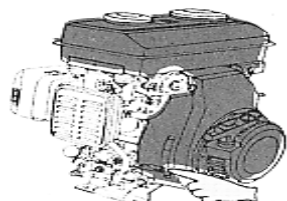


6. Pull the starter grip, until you feel the resistance
 7. Then pull the rope fast.
 8. Do not leave the rope. Do not allow the rope to snap back.
- Return the rope slowly, by hand, to the recoil starter

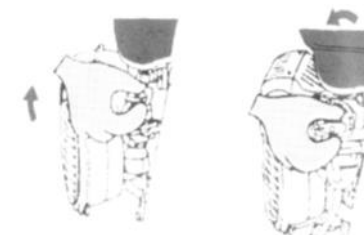


Stopping the Engine:

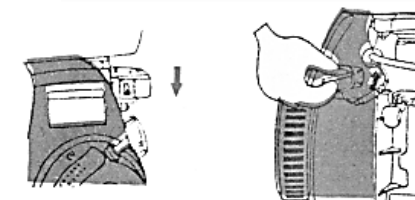
1. Move the throttle (accelerator) lever fully down.



2. Turn the Fuel Cock to STOP / OFF position



3. Turn the Engine switch to OFF position.



NOTE: In case of emergency, in order to stop the engine just turn the switch to OFF position.

MAINTENANCE

Item \ Period	Before Each Use	First Month	Every 3-Months	Every 6-Months	1-Year	3-Years
Engine Oil	Check	Change		Change		
Air Cleaner	Check		Clean			
Spark Plug				Check, Clean, Readjust		
Muffler					Clean	
Cylinder Head					Clean	
Fuel Filter & Fuel Pipe					Clean	Change
Valves					Check, Readjust	

Important:

- Oil should be changed after first 20 hours of use. After that OIL should be changed every 100-hours of use.