

Important: (1) Normal maintenance and adjustments to the product is the responsibility of the customer. (2) Normal wear and tear is not covered under warranty. (3) Rubber/plastic parts and consumables such as blades, clutch and clutch-bell, spark-plugs, nylon line, air-filters, fuel-filters, oil seals etc. are not covered under the warranty.

No Warranty On Electrical Motor / Electrical Parts / Battery Etc.

Incidental / Consequential Loss: KisanKraft Limited or its manufacturers will not be liable for general damages, including bodily injuries, or for incidental or consequential damages including, but not limited to, loss of use, loss of profits, loss of production, expense of substitute equipment or other commercial loss or damage.

Limitation of Liability: This limited warranty is in lieu of all other express warranties, obligations, or liabilities. Any implied warranties, obligations or liabilities, including, but not limited to, any implied warranty of merchantability shall be limited in duration to the applicable warranty period. Any action for breach of any warranty hereunder, including, but not limited to, any implied warranty of merchantability must be brought within the applicable warranty period.

Modifications of Warranty: No agent, representative, dealer, or employee of KisanKraft Limited or any of its manufacturers has the authority to increase or alter the obligations of this warranty.

Assignment / Transfer of warranty: The warranty cannot be assigned and shall not transfer if the product is resold by the first buyer. The above warranties are extended to the first end user (original purchaser), and no warranty is made, nor authorized to be made assignable on resale by the first end user.

What you must do to obtain limited warranty service: To obtain performance of any obligation under this warranty for failure during the applicable warranty period, deliver the defective product, to the nearest Authorized Dealer. KisanKraft Limited, its manufacturers and its dealers reserve the right to inspect the claimed defective part(s) to determine if the malfunction is the result of a defect covered by this warranty. Please note that the decision of KisanKraft Limited with respect to any warranty claim is final.

Receipt is required for availing warranty services

Jurisdiction: All disputes are subject to Bangalore court's jurisdiction.

Our Products

- ◆Chainsaws◆Brush Cutters and Accessories◆Harvesters◆
- ◆Engines and Water Pumps◆Hand Tools◆Garden Tools◆
- ◆Cultivators and Accessories◆Sprayers and Accessories◆
- ◆Transplanter and Post Hole Digger◆Milking Machines◆

This warranty is null & void, if you fail to register the warranty with KisanKraft by sending the KisanKraft Copy with dealer's stamp.

KisanKraft Limited (formerly known as KisanKraft Machine Tools P Ltd)

🌐: www.kisankraft.com

✉: info@kisankraft.com

☎: +91.80. 22178200

| | | | |
|--|-------------------------------|--|--|
| Product | Hedge Trimmer-Electric | KisanKraft Invoice Date | |
| Brand | KisanKraft | KisanKraft Invoice No. | |
| Model | ☐ KK-HTE-600 | | |
| WARRANTY PERIOD | 6-MONTHS | FOR THE SPECIFIED PERIOD FROM THE DATE OF SALE OR DELIVERY WHICHEVER IS EARLIER. | |
| Dealer's Invoice Date | | Dealer's Invoice No. | |
| Buyer's Info (Name, Address, Phone, etc.): | | Dealer's Stamp (Address, Phone, TIN, etc.): | |
| Buyer's Sign | | Dealer's Sign | |

What is covered: KisanKraft Limited and its manufacturers warrant this product to be free from defects in material or workmanship. All parts defective in material and workmanship are covered.

This warranty will only cover defects arising under normal usage.

This warranty is limited to repair or replacement by KisanKraft Limited or its manufacturers at the premises of Authorized Dealers, of such parts as appear to KisanKraft or its manufacturers, upon inspection, to be defective in material and/or workmanship. KisanKraft or its manufacturers make no warranty with respect to trade accessories not manufactured or sold by them.

What is not covered: The warranty shall become null and void and neither KisanKraft Limited nor any of its manufacturers, nor its authorized dealers assumes any responsibility, if the failure was caused by the following:

- (1) Operation of product with incorrect fuel or lubricants, (2) Incorrect usage of machine or misuse, (3) Lack of maintenance, (4) Negligence, (5) Accident or physical damage, (6) Repairs made by unauthorized parties and/or with unauthorized parts, (7) Improper set up, adjustments, tampering or altered products

Note: The purchase is not contingent upon a product demonstration. The purchaser shall satisfy himself with the product, including any product demonstration or verification of any function, before buying. KisanKraft Limited or its authorized dealers, including online sellers, shall not be liable to give any on-site demonstration after purchase of any of the product.

This warranty is null & void, if you fail to register the warranty with KisanKraft by sending the KisanKraft Copy with dealer's stamp.

KisanKraft Limited (formerly known as KisanKraft Machine Tools P Ltd)

🌐: www.kisankraft.com

✉: info@kisankraft.com

☎: +91.80. 22178200

Important: (1) Normal maintenance and adjustments to the product is the responsibility of the customer. (2) Normal wear and tear is not covered under warranty (3) Rubber/plastic parts and consumables such as blades, clutch and clutch-bell, spark-plugs, nylon line, air-filters, fuel-filters, oil seals etc. are not covered under the warranty.

No Warranty On Electrical Motor / Electrical Parts / Battery Etc.

Incidental / Consequential Loss: KisanKraft Limited or its manufacturers will not be liable for general damages, including bodily injuries, or for incidental or consequential damages including, but not limited to, loss of use, loss of profits, loss of production, expense of substitute equipment or other commercial loss or damage.

Limitation of Liability: This limited warranty is in lieu of all other express warranties, obligations, or liabilities. Any implied warranties, obligations or liabilities, including, but not limited to, any implied warranty of merchantability shall be limited in duration to the applicable warranty period. Any action for breach of any warranties hereunder, including, but not limited to, any implied warranty of merchantability must be brought within the applicable warranty period.

Modifications of Warranty: No agent, representative, dealer, or employee of KisanKraft Limited or any of its manufacturers has the authority to increase or alter the obligations of this warranty.

Assignment / Transfer of warranty: The warranty cannot be assigned and shall not transfer if the product is resold by the first buyer. The above warranties are extended to the first end user (original purchaser), and no warranty is made, nor authorized to be made assignable on resale by the first end user.

What you must do to obtain limited warranty service: To obtain performance of any obligation under this warranty for failure during the applicable warranty period, deliver the defective product, to the nearest Authorized Dealer. KisanKraft Limited, its manufacturers and its dealers reserve the right to inspect the claimed defective part(s) to determine if the malfunction is the result of a defect covered by this warranty. Please note that the decision of KisanKraft Limited with respect to any warranty claim is final.

Receipt is required for availing warranty services

Jurisdiction: All disputes are subject to Bangalore court's jurisdiction.

Our Products

- ◆Chainsaws◆Brush Cutters and Accessories◆Harvesters◆
- ◆Engines and Water Pumps◆Hand Tools◆ Garden Tools◆
- ◆Cultivators and Accessories◆Sprayers and Accessories◆
- ◆Transplanter and Post Hole Digger ◆ Milking Machines ◆

This warranty is null & void, if you fail to register the warranty with KisanKraft by sending the KisanKraft Copy with dealer's stamp.

KisanKraft Limited (formerly known as KisanKraft Machine Tools P Ltd)

🌐: www.kisankraft.com

✉: info@kisankraft.com

☎: +91.80. 22178200

| | | | |
|--|-------------------------------|--|--|
| Product | Hedge Trimmer-Electric | KisanKraft Invoice Date | |
| Brand | KisanKraft | KisanKraft Invoice No. | |
| Model | ❑ KK-HTE-600 | | |
| WARRANTY PERIOD | 6-MONTHS | FOR THE SPECIFIED PERIOD FROM THE DATE OF SALE OR DELIVERY WHICHEVER IS EARLIER. | |
| Dealer's Invoice Date | | Dealer's Invoice No. | |
| Buyer's Info (Name, Address, Phone, etc.): | | Dealer's Stamp (Address, Phone, TIN, etc.): | |
| Buyer's Sign | | Dealer's Sign | |

What is covered: KisanKraft Limited and its manufacturers warrant this product to be free from defects in material or workmanship. All parts defective in material and workmanship are covered.

This warranty will only cover defects arising under normal usage.

This warranty is limited to repair or replacement by KisanKraft Limited or its manufacturers at the premises of Authorized Dealers, of such parts as appear to KisanKraft or its manufacturers, upon inspection, to be defective in material and/or workmanship. KisanKraft or its manufacturers make no warranty with respect to trade accessories not manufactured or sold by them.

What is not covered: The *warranty shall become null and void* and neither KisanKraft Limited nor any of its manufacturers, nor its authorized dealers assumes any responsibility, if the failure was caused by the following:

- (1) Operation of product with incorrect fuel or lubricants,
- (2) Incorrect usage of machine or misuse,
- (3) Lack of maintenance,
- (4) Negligence,
- (5) Accident or physical damage,
- (6) Repairs made by unauthorized parties and/or with unauthorized parts,
- (7) Improper set up, adjustments, tampering or altered products

Note: The purchase is not contingent upon a product demonstration. The purchaser shall satisfy himself with the product, including any product demonstration or verification of any function, before buying. KisanKraft Limited or its authorized dealers, including online sellers, shall not be liable to give any on-site demonstration after purchase of any of the product.

This warranty is null & void, if you fail to register the warranty with KisanKraft by sending the KisanKraft Copy with dealer's stamp.

KisanKraft Limited (formerly known as KisanKraft Machine Tools P Ltd)

🌐: www.kisankraft.com

✉: info@kisankraft.com

☎: +91.80. 22178200

Wide Range of Products for Every Need



For more information give **MISSED CALL: 07676065555**



Many of our products have BIS: ISI certification.



Operation Manual

KK-HTE-600



We recommend the use of a VOLTAGE STABILIZER for safety and longer life of the product

KisanKraft Limited

(Formerly known as KisanKraft Machine Tools Pvt. Ltd)

Sri Huchhanna Tower, #4, 1st Main, 7-A Cross, Maruthi Layout, Dasarahalli,
HAF Post, Hebbal, Bangalore 560024, Karnataka, INDIA

- ♦ Bangalore (HO) ♦ Ahmedabad ♦ Bhopal ♦ Bhubaneswar ♦ Coimbatore ♦
- ♦ Jammu ♦ Guwahati ♦ Shimla ♦ Hubli ♦ Hyderabad ♦
- ♦ Jaipur ♦ Karnal ♦ Kolkata ♦ Lucknow ♦ Pune ♦ Raipur ♦

CONTENTS

| | |
|-------------------------------------|----|
| BEFORE GETTING STARTED..... | 7 |
| OVERVIEW | 7 |
| SAFETY INSTRUCTIONS..... | 7 |
| ASSEMBLY..... | 9 |
| OPERATION..... | 10 |
| 1. Switching on and off | 10 |
| 2. Blade Brake..... | 10 |
| 3. Working position adjustment..... | 10 |
| 4. Trimming new growth..... | 11 |
| 5. Leveling hedges | 11 |
| 6. Side-trimming hedges | 11 |
| 7. Shaping..... | 11 |
| 8. Cutting sequence | 11 |
| 9. Trimming the top | 12 |
| 10. General information | 12 |
| MAINTENANCE | 12 |
| TECHNICAL SPECIFICATIONS | 13 |
| PARTS DIAGRAM..... | 14 |
| PARTS LIST | 15 |

KisanKraft has a large range of products to serve the farmers. A list of our products is given below:

| | |
|--|---|
| Brush Cutters and Accessories Brush Cutter/Power Weeder Backpack Brush Cutter Tea Pruner Pole pruner with Engine Reaper Attachment Blades-Circular Blades (2 & 3 points) Baffle Nylon Rope Tap & Go Chainsaws Petrol Chainsaw Electric Chainsaw Chain Sharpening Machine Engines and Water Pumps Engine –Diesel-(Horizontal) Engine –Diesel(Vertical) Engine-Kerosene Water Pump with Petrol Engine Water Pump with Kerosene Engine Water Pump with Diesel Engine Hand Tools Secateurs Folding Saw Garden Rake Garden Shovel Hedge Shear Lopper Telescopic Hedge Shear Telescopic Lopping Shear Tree Pruner Telescopic Steel Pipe & Fruit Picker Bag Sheep Shear Garden Tools Electric Pressure Washer Hedge Trimmer Lawn Mower (Electric, Petrol & Manual) Leaf Blower | Cultivators and Accessories Petrol and Diesel Sprayers and Accessories Battery Sprayer Portable Power Sprayer Trolley Sprayer Manual Knapsack Sprayer Manual Pressure Sprayer Rose Cans Hose Crimping Machine HTP Sprayer HTP Delivery Hose HTP Hose Reel HTP Stand HTP Gun / Lance(Brass Rod) Knapsack Power Sprayer Mister / Duster / Granuel Spreader HTP Sprayer Set with Diesel Engine HTP Sprayer Set with Kerosene Engine Fogging Machine Milking Machine Wood Shredder Fodder Ensiling Chaff Cutter Fodder Grinder Chaff Cutter Fodder Mini Chaff Cutter Harvester Maize Sheller Maize Sheller + Dehusker Maize Combine Harvester Onion Digger Carlotti Italy Tea Leaf Harvester Sugarcane Combine Harvester Sugarcane Leaf Stripper Transplanter and Post Hole Digger Paddy Transplanter (2 & 8 Rows) Transplanter-Vegetable & Tobacco Post Hole Digger(4" to 14" Augers) |
|--|---|

| Part No | Part Name | Part No | Part Name |
|---------|---------------------------------|---------|----------------------------|
| 27 | Push Rod (Front Trigger Handle) | 59 | Capacitance |
| 28 | Carbon brush | 60 | Screw 5x18 HEX |
| 29 | Brush holder | 61 | Washer (Blade) |
| 30 | Motor Upper support | 62 | Spacer (Blading Adjusting) |
| 31 | Bearing-607-ZZ | 63 | Nut-M5 Nylon |
| 32 | Rotor | | |

| | | | |
|--|-------------------------------|--|--|
| Product | Hedge Trimmer-Electric | KisanKraft Invoice Date | |
| Brand | KisanKraft | KisanKraft Invoice No. | |
| Model | ☐ KK-HTE-600 | | |
| WARRANTY PERIOD | 6-MONTHS | FOR THE SPECIFIED PERIOD FROM THE DATE OF SALE OR DELIVERY WHICHEVER IS EARLIER. | |
| Dealer's Invoice Date | | Dealer's Invoice No. | |
| Buyer's Info (Name, Address, Phone, etc.): | | Dealer's Stamp (Address, Phone, TIN, etc.): | |
| Buyer's Sign | | Dealer's Sign | |

What is covered: KisanKraft Limited and its manufacturers warrant this product to be free from defects in material or workmanship. All parts defective in material and workmanship are covered.

This warranty will only cover defects arising under normal usage.

This warranty is limited to repair or replacement by KisanKraft Limited or its manufacturers at the premises of Authorized Dealers, of such parts as appear to KisanKraft or its manufacturers, upon inspection, to be defective in material and/or workmanship. KisanKraft or its manufacturers make no warranty with respect to trade accessories not manufactured or sold by them.

What is not covered: The warranty shall become null and void and neither KisanKraft Limited nor any of its manufacturers, nor its authorized dealers assumes any responsibility, if the failure was caused by the following:

- (1) Operation of product with incorrect fuel or lubricants,
- (2) Incorrect usage of machine or misuse,
- (3) Lack of maintenance,
- (4) Negligence,
- (5) Accident or physical damage,
- (6) Repairs made by unauthorized parties and/or with unauthorized parts,
- (7) Improper set up, adjustments, tampering or altered products

Note: The purchase is not contingent upon a product demonstration. The purchaser shall satisfy himself with the product, including any product demonstration or verification of any function, before buying. KisanKraft Limited or its authorized dealers, including online sellers, shall not be liable to give any on-site demonstration after purchase of any of the product.

This warranty is null & void, if you fail to register the warranty with KisanKraft by sending the KisanKraft Copy with dealer's stamp.

KisanKraft Limited (formerly known as KisanKraft Machine Tools P Ltd)

Important: (1) Normal maintenance and adjustments to the product is the responsibility of the customer. (2) Normal wear and tear is not covered under warranty. (3) Rubber/plastic parts and consumables such as blades, clutch and clutch-bell, spark-plugs, nylon line, air-filters, fuel-filters, oil seals etc. are not covered under the warranty.

No Warranty On Electrical Motor / Electrical Parts / Battery Etc.

Incidental / Consequential Loss: KisanKraft Limited or its manufacturers will not be liable for general damages, including bodily injuries, or for incidental or consequential damages including, but not limited to, loss of use, loss of profits, loss of production, expense of substitute equipment or other commercial loss or damage.

Limitation of Liability: This limited warranty is in lieu of all other express warranties, obligations, or liabilities. Any implied warranties, obligations or liabilities, including, but not limited to, any implied warranty of merchantability shall be limited in duration to the applicable warranty period. Any action for breach of any warranty hereunder, including, but not limited to, any implied warranty of merchantability must be brought within the applicable warranty period.

Modifications of Warranty: No agent, representative, dealer, or employee of KisanKraft Limited or any of its manufacturers has the authority to increase or alter the obligations of this warranty.

Assignment / Transfer of warranty: The warranty cannot be assigned and shall not transfer if the product is resold by the first buyer. The above warranties are extended to the first end user (original purchaser), and no warranty is made, nor authorized to be made assignable on resale by the first end user.

What you must do to obtain limited warranty service: To obtain performance of any obligation under this warranty for failure during the applicable warranty period, deliver the defective product, to the nearest Authorized Dealer. KisanKraft Limited, its manufacturers and its dealers reserve the right to inspect the claimed defective part(s) to determine if the malfunction is the result of a defect covered by this warranty. Please note that the decision of KisanKraft Limited with respect to any warranty claim is final.

Receipt is required for availing warranty services

Jurisdiction: All disputes are subject to Bangalore court's jurisdiction.

| | |
|---------------------|---|
| Our Products | <ul style="list-style-type: none"> ◆Chainsaws◆Brush Cutters and Accessories◆Harvesters◆ ◆Engines and Water Pumps◆Hand Tools◆Garden Tools ◆ ◆Cultivators and Accessories◆Sprayers and Accessories◆ ◆Transplanter and Post Hole Digger ◆ Milking Machines ◆ |
|---------------------|---|

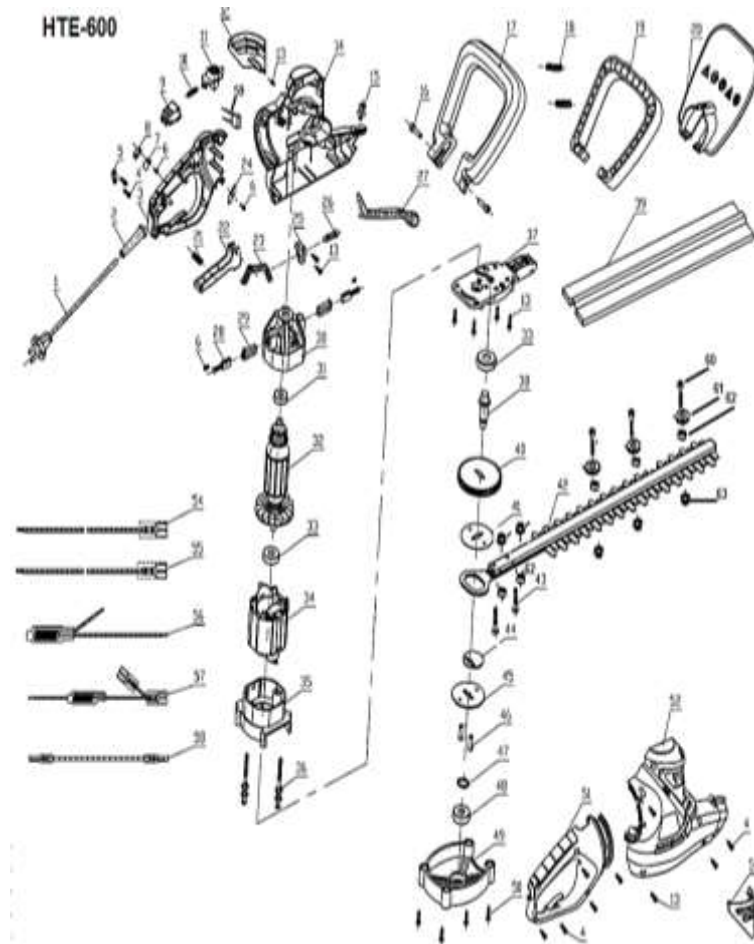
This warranty is null & void, if you fail to register the warranty with KisanKraft by sending the KisanKraft Copy with dealer's stamp.

KisanKraft Limited (formerly known as KisanKraft Machine Tools P Ltd)

PARTS LIST

| Part No | Part Name | Part No | Part Name |
|---------|------------------------|---------|-----------------------|
| 1 | Power cable | 33 | Bearing 608 ZZ |
| 2 | Cable Sheath | 34 | Stator |
| 3 | Left Handle | 35 | motor Lower support |
| 4 | Self-tapping Screw | 36 | Stator screw |
| 5 | Cable Pressboard | 37 | Gear Case Upper |
| 6 | S.T Screw | 38 | Output shaft |
| 7 | Power Indicator | 39 | Blade Cover |
| 8 | Indicator Cover | 40 | Gear Wheel |
| 9 | Switch on/off | 41 | Base Plate (Thin) |
| 10 | Spring (Push Button) | 42 | Blade assembly |
| 11 | Handle Lock Button | 43 | Screw 5x30 Hex |
| 12 | Cover (Left Housing) | 44 | Eccentric wheel |
| 13 | S.T Screw | 45 | Base Plate (Thick) |
| 14 | Left Housing | 46 | Locating pin |
| 15 | Screw 5x15 star & nut | 47 | Snap ring for shaft |
| 16 | Screw 6x14 Star | 48 | Bearing-606- ZZ |
| 17 | Front Handle | 49 | Gear Case Cover |
| 18 | Spring (Assist Handle) | 50 | Screw 4x18 Star |
| 19 | Front Trigger Handle | 51 | Right Handle |
| 20 | Protecting Cover | 52 | Right Housing |
| 21 | Trigger Spring | 53 | Cover (Right Housing) |
| 22 | Switch Trigger | 54 | Connection line 1 |
| 23 | Push Rod (Trigger) | 55 | Connection line 2 |
| 24 | Wire Protect Plate | 56 | Connection line 3 |
| 25 | Holder (Pin Push Rod) | 57 | Connection line 4 |
| 26 | Pin (Push Rod) | 58 | Connection line 5 |

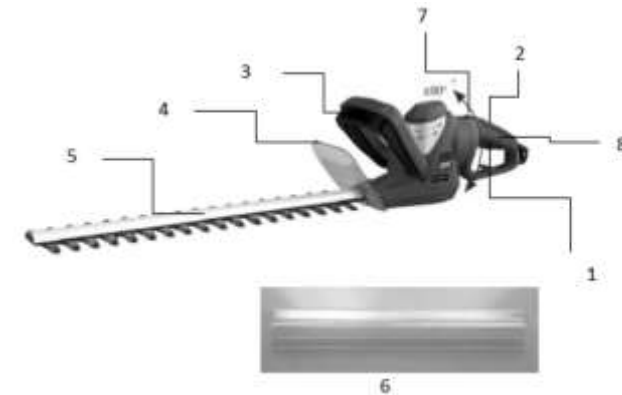
PARTS DIAGRAM



BEFORE GETTING STARTED

Your Lithium Ion Electric Hedge Trimmer has been designed for trimming light foliage. It is intended for DIY (Do It Yourself) use only. It is not built for continuous daily use in a trade or professional capacity. Please read and follow the instructions in this manual before using the machine. The user should be familiar with the safety notices, machine performance, and maintenance, etc. The operation manual will be used later in case of any repair, accessories replacement, and accessories procurement, so preserve it carefully.

OVERVIEW



- | | |
|---------------------------------|--------------------------------------|
| 1. Rear Handle On/Off Switch | 6. Blade cover |
| 2. Rear Handle (with soft grip) | 7. Rear handle rotating slide switch |
| 3. Front Handle On/Off Switch | 8. Power Supply Led Indicator |
| 4. Safety Guard | |
| 5. Dual action cutting blade | |

SAFETY INSTRUCTIONS

⚠ WARNING: Read all the safety warnings and all instructions. Failure to follow the warnings and instructions may result in electric shock, fire and/or serious injury.

Note: The term “**power tool**” in all of the warnings refers to your mains-operated (corded) power tool or battery –operated (corded) power tool.

1. Work area safety:

- Keep work area clean and well lit.** Cluttered or dark areas invite accidents.
- Do not operate power tools in explosive atmospheres, such as in the presence of flammable liquids, gases or dust.** Power tools create sparks which may ignite the dust or fumes.
- Keep children and bystanders away while operating a power tool.** Distractions can cause you to lose control.

2. Electrical Safety:

TECHNICAL SPECIFICATIONS

| Parameter | Details |
|----------------------------------|------------|
| Engine Type | Electrical |
| Input Volt | 230 V~50Hz |
| Rated Power | 600 watts |
| No Load Speed | 330/min |
| Cutting width | 600mm |
| Tooth Space | 20mm |
| Max cutting diameter | 16 mm |
| Cutting length | 520mm |
| Voltage stabilizer (Recommended) | 1kw (min) |

- a) **Power tool plugs must match the outlet. Never modify the plug in any way. Do not use any adapter plugs with earthed (grounded) power tools.** Unmodified plugs and matching outlets will reduce the risk of electric shock.
 - b) **Avoid body contact with earthed or grounded surfaces, such as pipes, radiators, ranges and refrigerators.** There is an increased risk of electric shock if your body is earthed or grounded.
 - c) **Do not expose power tools to rain or wet conditions.** Water entering a power tool will increase the risk of electric shock.
 - d) **Do not abuse the cord. Never use the cord for carrying, pulling or unplugging the power tool. Keep cord away from heat, oil, sharp edges or moving parts.** Damaged or entangled cords increase the risk of electric shock.
 - e) **When operating a power tool outdoors, use an extension cord suitable for outdoor use.** Use of a cord suitable for outdoor use reduces the risk of electric shock.
 - f) **If operating a power tool in a damp location is unavoidable, use a residual current device (RCD) protected supply.** Use of an RCD reduces the risk of electric shock.
- 3. Personal Safety:**
- a) **Stay alert, watch what you are doing and use common sense when operating a power tool. Do not use a power tool while you are tired or under the influence of drugs, alcohol or medication.** A moment of inattention while operating power tools may result in serious personal injury.
 - b) **Use personal protective equipment. Always wear eye protection.** Protective Equipment such as dust mask, anti-skid safety shoes, hard hat, or hearing protection used for appropriate conditions will reduce personal injuries.
 - c) **Prevent unintentional starting. Ensure the switch is in the off-position before connecting to power source and /or battery pack, picking up or carrying the tool.** Carrying power tools with your finger on the switch or energizing power tools that have the switch on invites accidents.
 - d) **Remove any adjusting key or wrench before turning the power tool on.** A wrench or a key left attached to a rotating part of the power tool may result in personal injury.
 - e) **Do not overreach. Keep proper footing and balance at all times.** This enables better control of power tool in unexpected situations.
 - f) **Dress properly. Do not wear loose clothing or jewellery. Keep your hair, clothing and gloves away from moving parts.** Loose clothes, jewellery or long hair can be caught in moving parts.
 - g) **If devices are provided for the connection of dust extraction and collection facilities, ensure these are connected and properly used.** Use of dust collection can reduce dust –related hazards.
- 4. Power tool use and care:**
- a) **Do not force the power tool. Use the correct power tool for your application.** The correct power tool will do the job better and safer at the rate for which it was designed.
 - b) **Do not use the power tool if the switch does not turn on and off.** Any power tool that cannot be controlled with the switch is dangerous and must be repaired.
 - c) **Disconnect the plug from the power source and/ or the battery pack from the power tool before making any adjustments, changing accessories, or**

9. Trimming the top

Where the branches have grown extremely long, cut back the hedge in several stages. The shorter the cuttings the better suited they are for composting.

10. General information

- When older hedges are to be cut back a substantial amount, use pruning shears or some other device to trim thicker branches (greater than 15mm diameter) to the desired length before starting work with the hedge trimmer.
- To shape precisely, run a taught line between the extreme edges of the hedge and then trim along the length of the line.
- Ensure the dual action cutting blades (5) do not come into contact with any object made of hard material that could damage the blades, such as fencing wire or metallic plant supports.
- When the task is complete, turn off the tool, slip on the blade cover (6).

MAINTENANCE

1. When not in use, the tool should be stored in a dry, frost-free location, out of reach of children.
2. Keep ventilation slots of the trimmer clean at all times and prevent any foreign matter from entering.
3. If the housing of the trimmer requires cleaning, use a moist soft cloth, but not any solvents.
4. The blade rail should be cleaned and treated with light machine oil or spray lubricant after each use. The lubrication will also help prevent corrosion of the blade when not in use. When a job lasts for a longer period of time it is recommended that the blade rail also be treated with spray lubricant at regular intervals during operation.

Note: The blades are not covered by warranty- any damage to or sharpening of the blades is the responsibility of the user.

storing power tools. Such preventive safety measures reduce the risk of starting the power tool accidentally.

- d) **Store idle power tools out of reach of children and do not allow persons unfamiliar with the power tool or these instructions to operate the power tool.** Power tools are dangerous in the hands of untrained users.

5. Service :

- a) **Have your power tool serviced by a qualified repair person using only identical replacement parts.** This will ensure that the safety of the power tool is, maintained.
- b) **If the supply cord is damaged, it must be replaced by the manufacturer, its service agent or similarly qualified persons in order to avoid a hazard.**

Additional safety rules:

- This appliance is not intended for use by young children or infirm persons unless they have been adequately supervised by a responsible person to ensure that they can use the appliance safely.
- Young children should be supervised to ensure that they do not play with the appliance.
- Never allow children or people unfamiliar with these instructions to use the trimmer. Keep all parts of the body away from the cutter blade. Do not remove cut material or hold material to be cut when the hedge trimmer is switched on. Please switch off the hedge trimmer when clearing jammed material. Any attempt to touch the blade while operating the hedge trimmer may result in serious personal injury.
- Carry the hedge trimmer by the handle with the cutter blade stopped. Please ensure the blade cover (9) has been slipped on when the hedge trimmer is not in use. Proper handling of the hedge trimmer will reduce possible personal injury from the cutter blades.

ASSEMBLY

 **Warning:** Stop the hedge trimmer before assembly.

Installing the Front Handle and Safety Guard:

1. Put the hedge trimmer on the leveled surface. Your two hands grip the front handle (3) and slide it into the slot on the two sides of the trimmer.



2. Fix the Front Handle (3) tightly with the two screws out of the package.



- Slide the safety guard (4) into the slots at the end of the housing.

- Fix the safety guard (4) with the on board screw tightly.



OPERATION

1. Switching on and off

- To prevent from accidental starting, this Hedge trimmer is designed with a two hand safety switch.
- To turn the Hedge trimmer **ON** both the rear handle on/off switch (1) and front handle on/off switch (3) are required to be activated
- To turn the hedge trimmer **OFF**, release either the rear handle on/off switch (1) or front handle on/off switch (3).
- This hedge trimmer has a power supply led indicator (8) to show the power is on when you insert the power cord to main power supply.



2. Blade Brake

- The hedge trimmer is fitted with an electric brake which very quickly brings the blades to a stop as soon as either the rear handle on/off switch (1) or front handle on/off switch (3) are released.
- This is an important safety feature that greatly reduces the chance of injury to the operator if a hand slips off the front or rear handle and control is lost temporarily.
- When the unit is switched off and the motor brake operates there may be some sparking (or flashing) in the area of the upper motor ventilation slots. This is normal and does not indicate any problem.

3. Working position adjustment

- Maintain proper footing and balance and do not overreach.

- Please wear safety goggles, anti-slip footwear and rubber gloves when trimming. Hold the tool firmly with both the hands and turn the tool on by squeezing both the switches.
- Always hold the trimmer with one hand on the front handle (3) and one hand on the rear handle (2).
- This hedge trimmer has a max 90degree left and right rotating rear handle. You can choose a comfortable grip direction for your trimming work.

Warning! Turn off the hedge trimmer before you do the adjustment.

- To adjust the grip direction, you hold the front handle (3) by one hand. The other hand grips the rear handle (2)
Note: Do not press the rear handle on/off switch (1) while you hold the rear handle (2).

- Use the index finger to slide the rear handle rotating slide switch (7) backwards whilst turn the rear handle (2) left or right. You can choose to stop at 45degree or 90degree left and right.



- Never hold the tool by the safety guard (4)

4. Trimming new growth

- The most effective way to trim new growth is to use a wide sweeping motion, feeding the blade teeth through the twigs.
- A slight downward tilt of the blade, in the direction of motion gives the best cut. Do not use the Trimmer for cutting stems greater than 15mm in diameter. Use the trimmer only for cutting normal shrubbery found around houses and buildings.

5. Leveling hedges

Stretch a piece of string along the length of the hedge as a guide when leveling hedges.

6. Side-trimming hedges

Begin at the bottom and cut in an upward sweeping action so that the debris falls away from the trimmer and does not build up around the dual action cutting blades (5).

7. Shaping

A hedge should be trimmed to a trapezoidal form, that is, it should widen toward the bottom at both sides. This improves the penetration of light to the lower extremities. A general guideline is approximately a 10cm slant for each 1 meter of hedge height.

8. Cutting sequence

First cut both sides, starting at the bottom and work to the top to prevent cuttings from falling into the area where you are still working.