

Important: (1) Normal maintenance and adjustments to the product is the responsibility of the customer. (2) Normal wear and tear is not covered under warranty. (3) Rubber/plastic parts and consumables such as blades, clutch and clutch-bell, spark-plugs, nylon line, air-filters, fuel-filters, oil seals etc. are not covered under the warranty.

No Warranty On Electrical Motor / Electrical Parts / Battery Etc.

Incidental / Consequential Loss: KisanKraft Limited or its manufacturers will not be liable for general damages, including bodily injuries, or for incidental or consequential damages including, but not limited to, loss of use, loss of profits, loss of production, expense of substitute equipment or other commercial loss or damage.

Limitation of Liability: This limited warranty is in lieu of all other express warranties, obligations, or liabilities. Any implied warranties, obligations or liabilities, including, but not limited to, any implied warranty of merchantability shall be limited in duration to the applicable warranty period. Any action for breach of any warranty hereunder, including, but not limited to, any implied warranty of merchantability must be brought within the applicable warranty period.

Modifications of Warranty: No agent, representative, dealer, or employee of KisanKraft Limited or any of its manufacturers has the authority to increase or alter the obligations of this warranty.

Assignment / Transfer of warranty: The warranty cannot be assigned and shall not transfer if the product is resold by the first buyer. The above warranties are extended to the first end user (original purchaser), and no warranty is made, nor authorized to be made assignable on resale by the first end user.

What you must do to obtain limited warranty service: To obtain performance of any obligation under this warranty for failure during the applicable warranty period, deliver the defective product, to the nearest Authorized Dealer. KisanKraft Limited, its manufacturers and its dealers reserve the right to inspect the claimed defective part(s) to determine if the malfunction is the result of a defect covered by this warranty. Please note that the decision of KisanKraft Limited with respect to any warranty claim is final.

Receipt is required for availing warranty services


Jurisdiction: All disputes are subject to Bangalore court's jurisdiction.

Our Products	<ul style="list-style-type: none"> ◆Chainsaws◆Brush Cutters and Accessories◆Harvesters◆ ◆Engines and Water Pumps◆Hand Tools◆Garden Tools◆ ◆Cultivators and Accessories◆Sprayers and Accessories◆ ◆Transplanter and Post Hole Digger ◆Milking Machines◆
---------------------	--

This warranty is null & void, if you fail to register the warranty with KisanKraft by sending the KisanKraft Copy with dealer's stamp.

KisanKraft Machine Tools Private Limited

🌐: www.kisankraft.com ✉: info@kisankraft.com ☎: +91.80. 22178200

Product	Water Pump with Petrol Start Kerosene Run Engine	KisanKraft Invoice Date	
Brand	KisanKraft	KisanKraft Invoice No.	
Model	<input type="checkbox"/> KK-WPK-20 <input type="checkbox"/> KK-WPK-30	 With ISI ENGINE KK-GE-160/200	
WARRANTY PERIOD	6-MONTHS	FOR THE SPECIFIED PERIOD FROM THE DATE OF SALE OR DELIVERY WHICHEVER IS EARLIER.	
Dealer's Invoice Date		Dealer's Invoice No.	
Buyer's Info (Name, Address, Phone, etc.):		Dealer's Stamp (Address, Phone, TIN, etc.):	
Buyer's Sign		Dealer's Sign	

What is covered: KisanKraft Limited and its manufacturers warrant this product to be free from defects in material or workmanship. All parts defective in material and workmanship are covered.

This warranty will only cover defects arising under normal usage.

This warranty is limited to repair or replacement by KisanKraft Limited or its manufacturers at the premises of Authorized Dealers, of such parts as appear to KisanKraft or its manufacturers, upon inspection, to be defective in material and/or workmanship. KisanKraft or its manufacturers make no warranty with respect to trade accessories not manufactured or sold by them.

What is not covered: The warranty shall become null and void and neither KisanKraft Limited nor any of its manufacturers, nor its authorized dealers assumes any responsibility, if the failure was caused by the following:

- (1) Operation of product with incorrect fuel or lubricants,
- (2) Incorrect usage of machine or misuse,
- (3) Lack of maintenance,
- (4) Negligence,
- (5) Accident or physical damage,
- (6) Repairs made by unauthorized parties and/or with unauthorized parts,
- (7) Improper set up, adjustments, tampering or altered products

Note: The purchase is not contingent upon a product demonstration. The purchaser shall satisfy himself with the product, including any product demonstration or verification of any function, before buying. KisanKraft Limited or its authorized dealers, including online sellers, shall not be liable to give any on-site demonstration after purchase of any of the product

This warranty is null & void, if you fail to register the warranty with KisanKraft by sending the KisanKraft Copy with dealer's stamp.

KisanKraft Machine Tools Private Limited

🌐: www.kisankraft.com ✉: info@kisankraft.com ☎: +91.80.22178200

Important: (1) Normal maintenance and adjustments to the product is the responsibility of the customer. (2) Normal wear and tear is not covered under warranty (3) Rubber/plastic parts and consumables such as blades, clutch and clutch-bell, spark-plugs, nylon line, air-filters, fuel-filters, oil seals etc. are not covered under the warranty.

No Warranty On Electrical Motor / Electrical Parts / Battery Etc.

Incidental / Consequential Loss: KisanKraft Limited or its manufacturers will not be liable for general damages, including bodily injuries, or for incidental or consequential damages including, but not limited to, loss of use, loss of profits, loss of production, expense of substitute equipment or other commercial loss or damage.

Limitation of Liability: This limited warranty is in lieu of all other express warranties, obligations, or liabilities. Any implied warranties, obligations or liabilities, including, but not limited to, any implied warranty of merchantability shall be limited in duration to the applicable warranty period. Any action for breach of any warranties hereunder, including, but not limited to, any implied warranty of merchantability must be brought within the applicable warranty period.

Modifications of Warranty: No agent, representative, dealer, or employee of KisanKraft Limited or any of its manufacturers has the authority to increase or alter the obligations of this warranty.

Assignment / Transfer of warranty: The warranty cannot be assigned and shall not transfer if the product is resold by the first buyer. The above warranties are extended to the first end user (original purchaser), and no warranty is made, nor authorized to be made assignable on resale by the first end user.

What you must do to obtain limited warranty service: To obtain performance of any obligation under this warranty for failure during the applicable warranty period, deliver the defective product, to the nearest Authorized Dealer. KisanKraft Machine Tools Private Limited, its manufacturers and its dealers reserve the right to inspect the claimed defective part(s) to determine if the malfunction is the result of a defect covered by this warranty. Please note that the decision of KisanKraft Limited with respect to any warranty claim is final.

Receipt is required for availing warranty services


Jurisdiction: All disputes are subject to Bangalore court's jurisdiction.

Our Products	<ul style="list-style-type: none"> ◆Chainsaws◆Brush Cutters and Accessories◆Harvesters◆ ◆Engines and Water Pumps◆Hand Tools◆Garden Tools◆ ◆Cultivators and Accessories◆Sprayers and Accessories◆ ◆Transplanter and Post Hole Digger ◆Milking Machines◆
---------------------	--

This warranty is null & void, if you fail to register the warranty with KisanKraft by sending the KisanKraft Copy with dealer's stamp.

KisanKraft Machine Tools Private Limited

🌐: www.kisankraft.com ✉: info@kisankraft.com ☎: +91.80.22178200

Product	Water Pump with Petrol Start Kerosene Run Engine	KisanKraft Invoice Date	
Brand	KisanKraft	KisanKraft Invoice No.	
Model	<input type="checkbox"/> KK-WPK-20 <input type="checkbox"/> KK-WPK-30	 With ISI ENGINE KK-GE-160/200	
WARRANTY PERIOD	6-MONTHS	FOR THE SPECIFIED PERIOD FROM THE DATE OF SALE OR DELIVERY WHICHEVER IS EARLIER.	
Dealer's Invoice Date		Dealer's Invoice No.	
Buyer's Info (Name, Address, Phone, etc.):		Dealer's Stamp (Address, Phone, TIN, etc.):	
Buyer's Sign		Dealer's Sign	

What is covered: KisanKraft Limited and its manufacturers warrant this product to be free from defects in material or workmanship. All parts defective in material and workmanship are covered.

This warranty will only cover defects arising under normal usage.

This warranty is limited to repair or replacement by KisanKraft Limited or its manufacturers at the premises of Authorized Dealers, of such parts as appear to KisanKraft or its manufacturers, upon inspection, to be defective in material and/or workmanship. KisanKraft or its manufacturers make no warranty with respect to trade accessories not manufactured or sold by them.

What is not covered: The warranty shall become null and void and neither KisanKraft Limited nor any of its manufacturers, nor its authorized dealers assumes any responsibility, if the failure was caused by the following:

- (1) Operation of product with incorrect fuel or lubricants,
- (2) Incorrect usage of machine or misuse,
- (3) Lack of maintenance,
- (4) Negligence,
- (5) Accident or physical damage,
- (6) Repairs made by unauthorized parties and/or with unauthorized parts,
- (7) Improper set up, adjustments, tampering or altered products

Note: The purchase is not contingent upon a product demonstration. The purchaser shall satisfy himself with the product, including any product demonstration or verification of any function, before buying. KisanKraft Limited or its authorized dealers, including online sellers, shall not be liable to give any on-site demonstration after purchase of any of the product

This warranty is null & void, if you fail to register the warranty with KisanKraft by sending the KisanKraft Copy with dealer's stamp.

KisanKraft Machine Tools Private Limited

🌐: www.kisankraft.com ✉: info@kisankraft.com ☎: +91.80. 22178200



Wide Range of Products for Every Need



For more information give **MISSED CALL: 07676065555**



Many of our products have BIS: ISI certification.



Operation Manual



With ISI ENGINE
KK-GE-160/200

KisanKraft Limited.

Sri Huchhanna Tower, #4, 1st Main, 7-A Cross, Maruthi Layout, Dasarahalli,
HAF Post, Hebbal, Bangalore 560024, Karnataka, INDIA

- ◆ Bangalore (HO) ◆ Ahmedabad ◆ Bhopal ◆ Bhubaneswar ◆ Coimbatore ◆
- ◆ Ernakulam ◆ Guwahati ◆ Mandi-HP ◆ Patna ◆ Hinudpur ◆ Hubli ◆ Hyderabad ◆
- ◆ Jaipur ◆ Karnal ◆ Kolkata ◆ Lucknow ◆ Nagpur ◆ Pune ◆ Raipur ◆ Shimla ◆

CONTENTS

BEFORE GETTING STARTED..... 7

SAFETY INSTRUCTIONS 7

OPERATION 7

PREPARATION BEFORE OPERATION:..... 7

STARTING THE ENGINE..... 8

USE..... 8

STOPPING THE ENGINE..... 8

MAINTENANCE..... 8

STORAGE..... 9

TROUBLESHOOTING 9

TECHNICAL SPECIFICATIONS 10

WATER PUMP PARTS DIAGRAM-KK-WPK-20/30 11

WATER PUMP PARTS LIST-KK-WPK-20/30 12

OPERATION MANUAL KEROSENE ENGINE 13

KisanKraft has a large range of products to serve the farmers. A list of our products is given below:

<p>Brush Cutters and Accessories</p> <ul style="list-style-type: none"> Brush Cutter/Power Weeder Backpack Brush Cutter Tea Pruner Pole pruner with Engine Reaper Attachment Blades-Circular Blades (2 &3 points) Baffle Nylon Rope Tap & Go <p>Chainsaws</p> <ul style="list-style-type: none"> Petrol Chainsaw Electric Chainsaw Chain Sharpening Machine <p>Engines and Water Pumps</p> <ul style="list-style-type: none"> Engine –Diesel-(Horizontal) Engine –Diesel(Vertical) Engine-Kerosene Water Pump with Petrol Engine Water Pump with Kerosene Engine Water Pump with Diesel Engine <p>Hand Tools</p> <ul style="list-style-type: none"> Secateurs Folding Saw Garden Rake Garden Shovel Hedge Shear Lopper Telescopic Hedge Shear Telescopic Lopping Shear Tree Pruner Telescopic Steel Pipe & Fruit Picker Bag Sheep Shear <p>Garden Tools</p> <ul style="list-style-type: none"> Electric Pressure Washer Hedge Trimmer Lawn Mower (Electric, Petrol & Manual) Leaf Blower 	<p>Cultivators and Accessories</p> <ul style="list-style-type: none"> Petrol and Diesel <p>Sprayers and Accessories</p> <ul style="list-style-type: none"> Battery Sprayer Portable Power Sprayer Trolley Sprayer Manual Knapsack Sprayer Manual Pressure Sprayer Rose Cans Hose Crimping Machine HTP Sprayer HTP Delivery Hose HTP Hose Reel HTP Stand HTP Gun / Lance(Brass Rod) Knapsack Power Sprayer Mister / Duster / Granuel Spreader HTP Sprayer Set with Diesel Engine HTP Sprayer Set with Kerosene Engine Fogging Machine <p>Milking Machine</p> <ul style="list-style-type: none"> Wood Shredder Fodder Ensiling Chaff Cutter Fodder Grinder Chaff Cutter Fodder Mini Chaff Cutter <p>Harvester</p> <ul style="list-style-type: none"> Maize Sheller Maize Sheller + Dehusker Maize Combine Harvester Onion Digger Carlotti Italy Tea Leaf Harvester Sugarcane Combine Harvester Sugarcane Leaf Stripper <p>Transplanter and Post Hole Digger</p> <ul style="list-style-type: none"> Paddy Transplanter (2 & 8 Rows) Transplanter-Vegetable & Tobacco Post Hole Digger(4" to 14" Augers)
---	---

Sl. No	Part Name	Part No
1	Fuel tank Assembly.	12-1
1.1	Fuel tank cover Assembly.	12-1.1
1-1.1	Fuel tank cover	12-1.1.1
1-1.2	Rubber seal, Fuel tank cover 38x56x3	12-1.1.2
1.2	Fuel filter Assembly	12-1.2
1-2.1	Support, Fuel filter	12-1.2.1
1-2.2	Fuel filter	12-1.2.2
1.3	Fuel tank	12-1.3
1.4	Fuel joint Assembly	12-1.4
1-4.1	Nut M10	12-1.4.1
1-4.2	Fuel joint	12-1.4.2
2	Fuel tube 8.5x4.5	12-2
3	Clip Fuel tube	12-3
4	Bolt M6 x 28	12-4
5	Nut M6	12-5
6	Fuel joint	12-6
7	Bracket	12-7
8	Fuel tube 8.5x4.5	12-8

Product	Water Pump with Petrol Start Kerosene Run Engine	KisanKraft Invoice Date	
Brand	KisanKraft	KisanKraft Invoice No.	
Model	<input type="checkbox"/> KK-WPK-20 <input type="checkbox"/> KK-WPK-30	 With ISI ENGINE KK-GE-160/200	
WARRANTY PERIOD	6-MONTHS	FOR THE SPECIFIED PERIOD FROM THE DATE OF SALE OR DELIVERY WHICHEVER IS EARLIER.	
Dealer's Invoice Date		Dealer's Invoice No.	
Buyer's Info (Name, Address, Phone, etc.):		Dealer's Stamp (Address, Phone, TIN, etc.):	
Buyer's Sign		Dealer's Sign	

What is covered: KisanKraft Limited and its manufacturers warrant this product to be free from defects in material or workmanship. All parts defective in material and workmanship are covered.

This warranty will only cover defects arising under normal usage.

This warranty is limited to repair or replacement by KisanKraft Limited or its manufacturers at the premises of Authorized Dealers, of such parts as appear to KisanKraft or its manufacturers, upon inspection, to be defective in material and/or workmanship. KisanKraft or its manufacturers make no warranty with respect to trade accessories not manufactured or sold by them.

What is not covered: The warranty shall become null and void and neither KisanKraft Limited nor any of its manufacturers, nor its authorized dealers assumes any responsibility, if the failure was caused by the following:

- (1) Operation of product with incorrect fuel or lubricants,
- (2) Incorrect usage of machine or misuse,
- (3) Lack of maintenance,
- (4) Negligence,
- (5) Accident or physical damage,
- (6) Repairs made by unauthorized parties and/or with unauthorized parts,
- (7) Improper set up, adjustments, tampering or altered products

Note: The purchase is not contingent upon a product demonstration. The purchaser shall satisfy himself with the product, including any product demonstration or verification of any function, before buying. KisanKraft Limited or its authorized dealers, including online sellers, shall not be liable to give any on-site demonstration after purchase of any of the product

This warranty is null & void, if you fail to register the warranty with KisanKraft by sending the KisanKraft Copy with dealer's stamp. KisanKraft Machine Tools Private Limited

Important: (1) Normal maintenance and adjustments to the product is the responsibility of the customer. (2) Normal wear and tear is not covered under warranty. (3) Rubber/plastic parts and consumables such as blades, clutch and clutch-bell, spark-plugs, nylon line, air-filters, fuel-filters, oil seals etc. are not covered under the warranty.

No Warranty On Electrical Motor / Electrical Parts / Battery Etc.

Incidental / Consequential Loss: KisanKraft Limited or its manufacturers will not be liable for general damages, including bodily injuries, or for incidental or consequential damages including, but not limited to, loss of use, loss of profits, loss of production, expense of substitute equipment or other commercial loss or damage.

Limitation of Liability: This limited warranty is in lieu of all other express warranties, obligations, or liabilities. Any implied warranties, obligations or liabilities, including, but not limited to, any implied warranty of merchantability shall be limited in duration to the applicable warranty period. Any action for breach of any warranty hereunder, including, but not limited to, any implied warranty of merchantability must be brought within the applicable warranty period.

Modifications of Warranty: No agent, representative, dealer, or employee of KisanKraft Limited or any of its manufacturers has the authority to increase or alter the obligations of this warranty.

Assignment / Transfer of warranty: The warranty cannot be assigned and shall not transfer if the product is resold by the first buyer. The above warranties are extended to the first end user (original purchaser), and no warranty is made, nor authorized to be made assignable on resale by the first end user.

What you must do to obtain limited warranty service: To obtain performance of any obligation under this warranty for failure during the applicable warranty period, deliver the defective product, to the nearest Authorized Dealer. KisanKraft Machine Tools Private Limited, its manufacturers and its dealers reserve the right to inspect the claimed defective part(s) to determine if the malfunction is the result of a defect covered by this warranty. Please note that the decision of KisanKraft Limited with respect to any warranty claim is final.

Receipt is required for availing warranty services

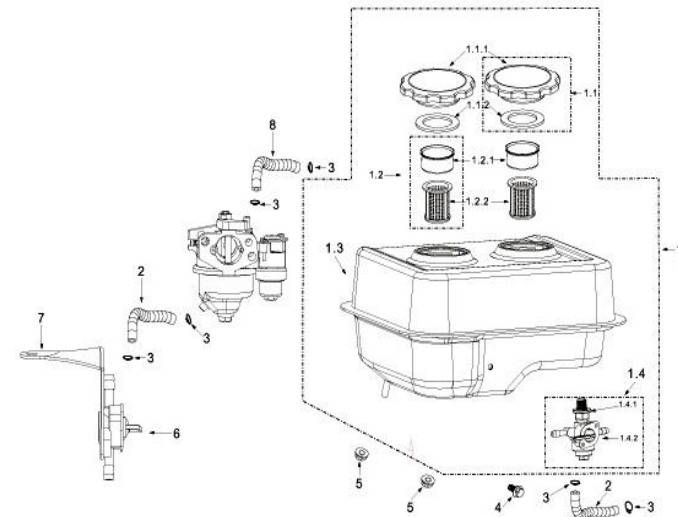
Jurisdiction: All disputes are subject to Bangalore court's jurisdiction.

<p>Our Products</p>	<ul style="list-style-type: none"> ◆Chainsaws◆Brush Cutters and Accessories◆Harvesters◆ ◆Engines and Water Pumps◆Hand Tools◆Garden Tools◆ ◆Cultivators and Accessories◆Sprayers and Accessories◆ ◆Transplanter and Post Hole Digger ◆Milking Machines◆
----------------------------	--

This warranty is null & void, if you fail to register the warranty with KisanKraft by sending the KisanKraft Copy with dealer's stamp.
KisanKraft Machine Tools Private Limited

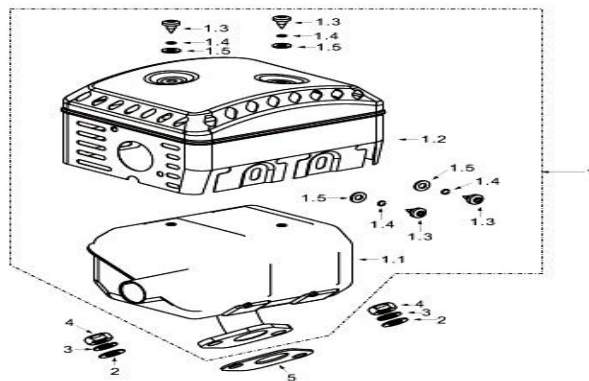
SI. No	Part Name	Part No
1	Muffler Assembly	11-1
1.1	Muffler body	11-1.1
1.2	Protector Muffler -A	11-1.2
1.3	Screw M5 x 8	11-1.3
1.4	Spring washer Φ5	11-1.4
1.5	Washer Φ 5	11-1.5
2	Washer Φ 8	11-2
3	Spring Φ 8	11-3
4	Nut M8	11-4
5	Gasket (Exhaust Part)	11-5

Fuel Tank-kerosene Engine



Sl. No	Part Name	Part No
1	Air Cleaner Assembly	10-1
1-1	Air Cleaner Seat Ass.	10-1.1
1-1.1	Air Cleaner seat	10-1.1.1
1-1.2	Seal Ring	10-1.1.2
1-1.3	Cover board	10-1.1.3
1-1.4	Screw M4 x 12	10-1.1.4
1-2	Filter Assembly	10-1.2
1-2.1	Foam Filter	10-1.2.1
1-2.2	Papery Filter	10-1.2.2
1-2.3	Rubber Fixer	10-1.2.3
1-2.4	Decal Washer	10-1.2.4
1.3	Filter Case	10-1.3
1.4	Butter Fly nut M6	10-1.4
1.5	Seal Ring 32x47x3	10-1.5
1.6	Air duck	10-1.6
2	Nut M6	10-2

Muffler Parts



BEFORE GETTING STARTED

Thank you for your purchase and use of our products. In order to avoid accidents or injury, please read this manual carefully before using the machine. After reading, preserve it for further reference.

This Water pump is characterized by light weight, simple structure high efficiency, convenient use and flexible movement. It can be used for agricultural irrigation, drainage construction and pumping, especially widely used in recurrent irrigation of small area for agricultural production at present.

SAFETY INSTRUCTIONS

1. Read the operation manual carefully before starting the engine in order to avoid any accident and damage.
2. Please do not use this engine inside an enclosed area. Ensure adequate ventilation while Engine is in operation.
3. To prevent fire hazard, please keep the Engine in operation at least 1-meter (3 feet) away from Combustible or Inflammable materials, buildings and equipment.
4. When refueling you must STOP the Engine. Please do not smoke near Engine. Wipe the spilled fuel after refueling.
CAUTION: Spilled fuel is a fire hazard.
5. Always place the engine horizontally. Do NOT tilt the Engine more than 21 degrees Overturning or inclining the engine may cause oil spillage and result in fire hazard.
6. Do NOT cover the Engine when in operation.
7. Children are strictly not allowed near the engine operation area.

OPERATION

PREPARATION BEFORE OPERATION:

1. Connect the suction pipe:
 - Place the filter into the empennage of the suction pipe with the tie-in.
 - Place another end into the input with the tie-in.
2. Connect the discharging pipe:
 - Place the discharging pipe into the output with the tie-in.
3. Check the oil:
 - Check the oil lever in the case that the engine is off and horizontal.
4. Check the fuel level:
 - Open the crankcase cover to check the fuel level. Please add fuel when the lever is low.
5. Check the air cleaner:
 - Disconnect the papilionaceous (flower petal like) nut washer and air cleaner filter.

- Check whether the foam filter element is dirty or air logged. Clean it if necessary.
 - Newly equip the air cleaner and operate the engine until it is well equipped.
 - It would accelerate the abrasion if the dust or the pollutant is absorbed into the engine through carburetor.
6. Check the water pump:
- Check whether the water is added into the pump.
 - The pump must be fully filled with water before operating.
 - Operate the pump until the water is added so as to protect the air proof from the overheating in lasting operation without water.

STARTING THE ENGINE

1. Keep the fuel valve to "ON" position.
2. Shut down the throttle (throttle may be partly closing or open when the engine is warm or in the case of high temperature).
3. Keep the switch in the ON position.
4. Slowly move the regulating handle to the left.
5. Pull the start handgrip when feeling the resistance, then drawback swiftly.

USE

The use of the water pump:

1. Gradually open the throttle when the engine's warm.
2. Set a scheduled rotation speed.

STOPPING THE ENGINE

1. Move the regulating handle to the right.
2. Keep the switch in the "OFF" position.
3. Turn off the fuel valve.

MAINTENANCE

Oil:

Change the oil and quickly discharge the oil when the engine is hot. Replace the oil for the first time after 50 hours of cumulative operation. After that, replace the oil per 500 hours operation. The specific procedure is as follows:

- Disconnect the oil cap and drain plug, then discharge the oil, newly equip the drain plug and screw it down.
- Add the clean oil to the appointed oil level.

Air cleaner filter:

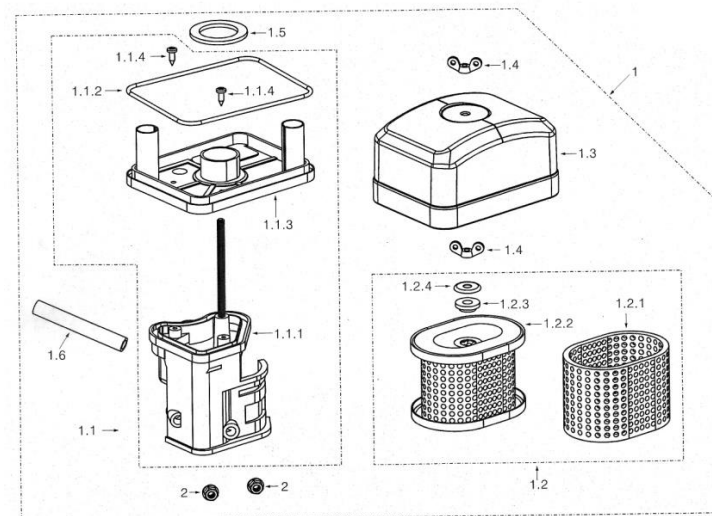
Air flow in the carburetor is reduced if air cleaner is dirty. In order to clean it:

- Move the papilionaceous nut, and disconnect the air cleaner filter cover and the foam filter element with apyrous cleaning and then air dry it.
- Dip the foam filter element into the clean oil and extrude the additional oil. Newly equip the foam filter element and air cleaner filter.

Spark plug:

Sl. No	Part Name	Part No
1-24	Spring Washer- big	9-1.24
1-25	Upper cover	9-1.25
1-26	Spring washer-small 3	9-1.26
1-27	Screw M3x7	9-1.27
2	Steel gasket	9-2
3	Gasket carburetor	9-3
4	Block Carburetor	9-4
5	Gasket, inlet port	9-5

Air Cleaner (Hemi -Dry type)



Sl. No	Part Name	Part No
1-3.3	Chock Valve	9-1.3.3
1-4	Measure hole Assembly idle speed	9-1.4
1-4.1	Measure hole, idle speed	9-1.4.1
1-4.2	O-ring 4.7x1	9-1.4.2
1-5	Adjustment Screw Assembly mixture ratio	9-1.5
1-5.1	Adjustment screw, mixture ratio M4x12	9-1.5.1
1-5.2	Spring	9-1.5.2
1-6	Adjustment screw Idle speed	9-1.6
1-7	Fuel Floater	9-1.7
1-8	Pin Fuel Floater	9-1.8
1-9	Needle Valve Assembly	9-1.9
1-9.1	Needle Valve seat	9-9.1
1-9.2	Needle Valve	9-9.2
1-9.3	Spring, Needle valve	9-9.3
1-10	Main Jet	9-1.10
1-11	Main Measuring hole	9-1.11
1-12	Fuel inlet Tube	9-1.12
1-13	Rubber seal (Fuel cup)	9-1.13
1.14	Fuel cup	9-1.14
1-15	Fuel drain plug	9-1.15
1-16	Gasket fuel drain plug	9-1.16
1-17	Tighten bolt (Fuel cup)	9-1.17
1-18	O-ring 11x1.5	9-1.18
1-19	Hand grip chock valve Assembly	9-1.19
1-20	Sediment cup	9-1.20
1-21	O-ring 21x2	9-1.21
1-22	Fuel Valve	9-1.22
1-23	Handle Bar	9-1.23

It would be kept 0.7-0.8 mm between the spark plug and no carbon so as to assure the normal running

STORAGE



Cool the engine and keep the fuel valve in the "OFF" position before moving or storing indoors to avoid the burning or fire.

1. Keep the storage place dry and less dust.
2. Clean the inner parts of the engine.
3. Replace the oil after completely discharging the fuel tank and the carburetor.
4. Disconnect the spark plug to infuse 2-3 grams of oil into the cylinder and rotate the engine 3-4 times and then equip the spark plug.
5. Cover the pump cover to avoid dust.

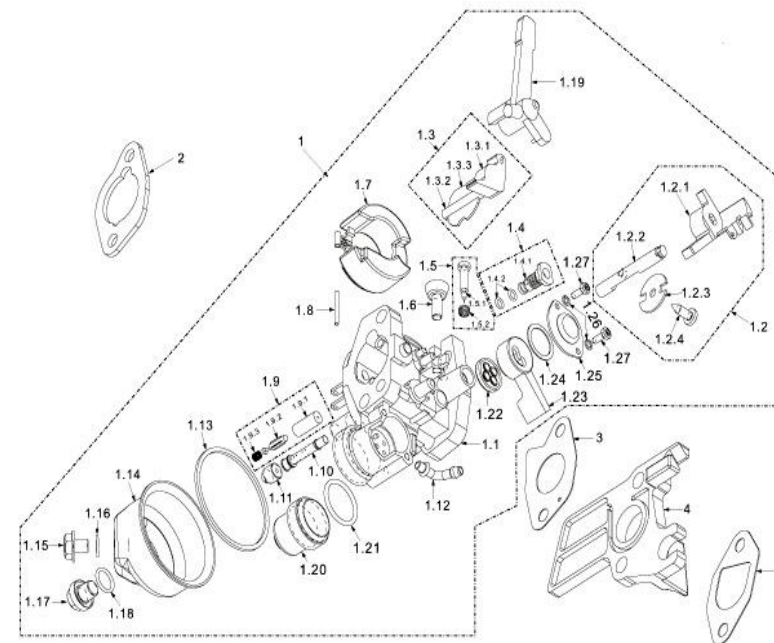
TROUBLESHOOTING

Problem	Probable cause	Action to be taken
The Engine can't be started	Refer the Engine manual	Refer the Engine manual
The pump cannot pump water	The water infused is not enough	Fill the pump with enough water.
	The filter is air – logged.	Clear the air from the filter.
	The tie-in is not firmly equipped , Suction pile is leaking.	Ensure proper suction Packing is proper and leak free.
	The pipe is damaged.	Replace the pipe.
Insufficient flux	Whether the head lift is too high	Never exceed the rated max. Lift, if so lower the head lift.
	Any block with impeller or strainer	Remove the blockage in the strainer
	Gas leakage in inlet pipe	Fix any leakage in the pipe
	Damage in impeller	Replace the impeller

TECHNICAL SPECIFICATIONS

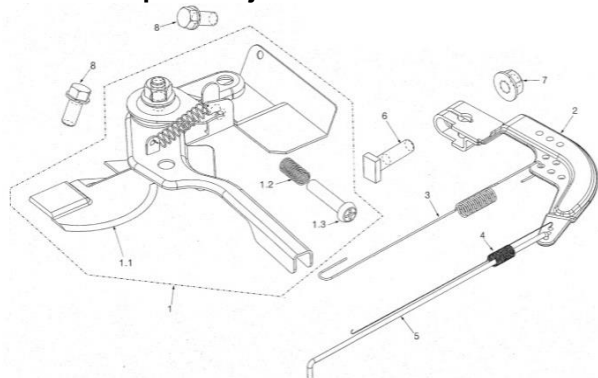
Model	KK-WPK-20	KK-WPK-30
kW (hp)	2.5kW (3.3 hp)	3 kW(4.1hp)
Displacement	163 cc	196 cc
Engine Type	4-stroke	
Engine model	KK-GE-160 	KK-GE-200 
Rated rotation speed	3600 (rpm)	
Fuel Used	Petrol start & kerosene run	
Fuel Tank Capacity	100 ml (Petrol) & 3 Litre (Kerosene)	
Oil	For Engine-550 ml (20w 40 Grade)	
Net Weight	26 kg	28 kg
Fuel Consumption	750 ml (Engine)/hour	1000 ml (Engine)/hour
Max flow	7 liter/sec	8.5 liter/sec
Delivery (horizontal)	24 m (delivery distance)	
Suction (vertical)	6 m(depth)	
Max discharge capacity	27000 liters/hour	45000 liters/hour
Inlet/outlet port dia	50 mm (2")	80 mm (3")

Carburetor Parts



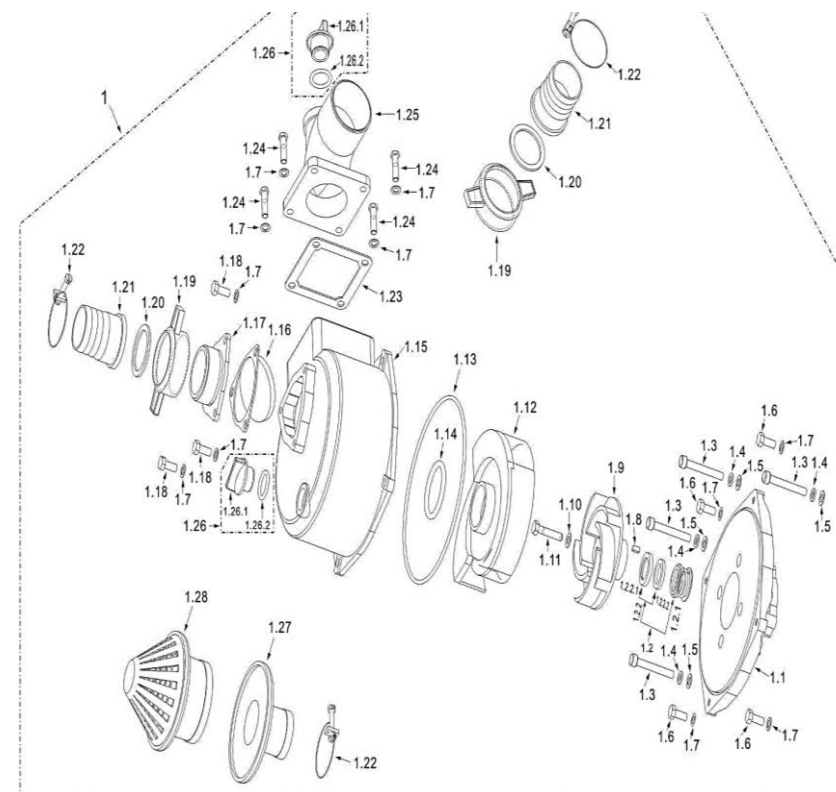
Sl. No	Part Name	Part No
1	Carburetor Assembly	9-1
1-1	Carburetor Body oil	9-1.1
1-2	Throttle Valve Assembly	9-1.2
1-2.1	Throttle Valve Cap	9-1.2.1
1-2.2	Throttle Valve axis	9-1.2.2
1-2.3	Throttle Valve	9-1.2.3
1-2.4	Screw M4x12	9-1.2.4
1-3	Chock Valve Assembly	9-1.3
1-3.1	Chock Valve cap	9-1.3.1
1-3.2	Chock Valve axis	9-1.3.2

Speed Adjustment Base Parts



Sl. No	Part Name	Part No
1	Speed Adjustment base part	8-1
1-1	Speed Adjustment Base Ass.	8-1.1
1-2	Adjustment Spring	8-1.2
1-3	Adjustment Screw	8-1.3
2	Speed Adjustment arm	8-2
3	Return Spring	8-3
4	Fine Adjustment Spring	8-4
5	Pulling Rod	8-5
6	Quadrate bolt M6x21	8-6
7	Nut M6	8-7
8	Bolt M6 x 12	8-8

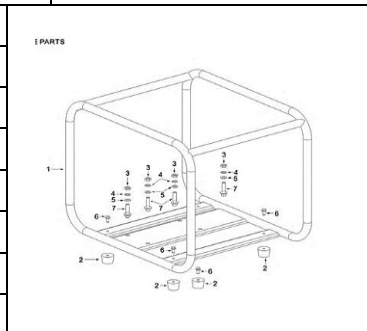
WATER PUMP PARTS DIAGRAM-KK-WPK-20/30



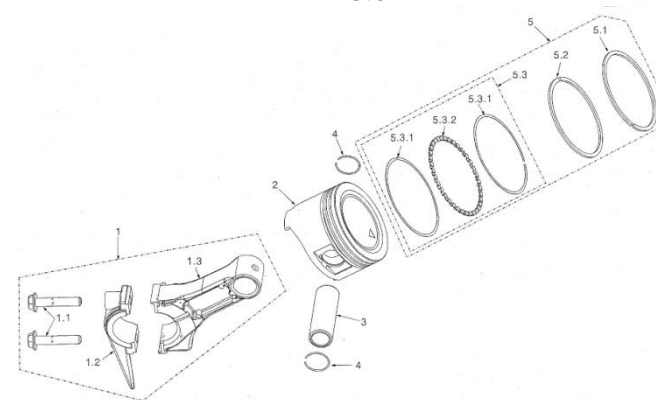
WATER PUMP PARTS LIST-KK-WPK-20/30

Part No	Part Name	Part No	Part Name
13-1	Water Pump Parts	13-1.14	O-Ring
13-1.1	Pump Cover	13-1.15	Pump body
13-1.2	Water Seal ass.	13-1.16	rubber gasket, Triangle flange
13-1.2.1	Static water seal ass.	13-1.17	Triangle flange
13-1.2.2	Dynamic water seal ass.	13-1.18	Bolt
13-1.2.2.1	Rubber seal, Ceramic seal body	13-1.19	Flange nut
13-1.2.2.2	Ceramic seal body	13-1.2	Rubber gasket, inlet and outlet pipe
13-1.3	Bolt	13-1.21	Inlet and outlet pipe
13-1.4	Rubber gasket	13-1.22	Pipe hoop
13-1.5	washer	13-1.23	Rectangular rubber gasket
13-1.6	Bolt	13-1.24	Bolt
13-1.7	washer	13-1.25	Pump Elbow
13-1.8	Flat Key	13-1.26	Rubber Plug ass.
13-1.9	Impeller	13-1.26.1	Rubber Plug ass.
13-1.1	washer	13-1.26.2	O-Ring
13-1.11	Bolt	13-1.27	Cover, Taper filter
13-1.12	Turbine	13-1.28	Taper filter
13-1.13	O-Ring		

Part No	Part Name
14-1	Water Pump Parts
14-2	Frame absorber
14-3	Nut
14-4	Spring washer
14-5	washer
14-6	Bolt
14-7	Bolt

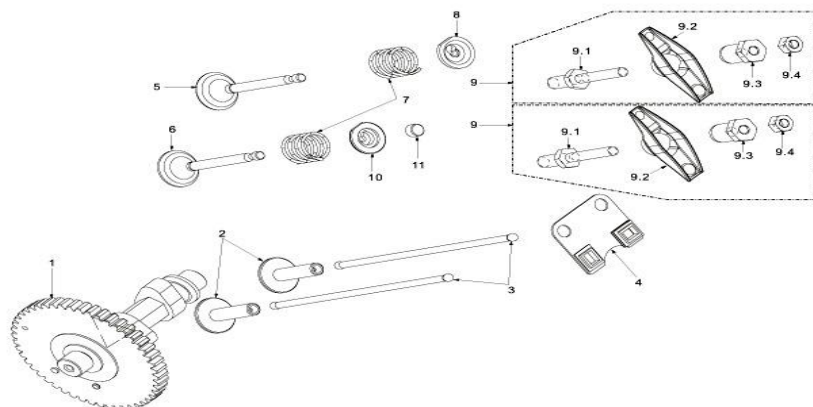


Piston



Sl. No	Part Name	Part No
1	Connecting rod Assembly	7-1
1-1	Bolt connecting rod M7x35	7-1.1
1-2	Cover, connecting rod	7-1.2
1-3	Body, connecting rod	7-1.3
2	Piston	7-2
3	Piston Pin	7-3
4	Clip Piston Pin	7-4
5	Piston Ring Assembly	7-5
5-1	First air ring	7-5.1
5-2	Second air ring	7-5.2
5-3	Oil ring Ass.	7-5.3
5-3.1	Scraper ring	7-5.3.1
5-3.2	Set off ring	7-5.3.2

Cam Shaft



OPERATION MANUAL KEROSENE ENGINE



KK-GE-160/200

Sl. No	Part Name	Part No
1	Cam Shaft Assembly	6-1
2	Tappet	6-2
3	Pusher	6-3
4	Pusher guide	6-4
5	Intake Valve	6-5
6	Exhaust Valve	6-6
7	Valve Spring	6-7
8	Spring seat Intake Valve	6-8
9	Rocker Ass.	6-9
9-1	Stud Rocker Assembly	6-9.1
9-2	Rocker	6-9.2
9-3	Adjust Nut Sphere	6-9.3
9-4	Lock Nut	6-9.4
10	Spring Seat Exhaust Valve	6-10
11	Cap Exhaust valve	6-11

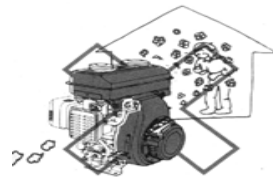
BEFORE GETTING STARTED

Thank you for your purchase and use of our products. In order to avoid accidents or injury, **please read this manual carefully** before using the machine. After reading, preserve it for further reference.

SAFETY INSTRUCTIONS

1. Please do not use this engine inside an enclosed area. Ensure adequate ventilation while Engine is in operation.

CAUTION: Exhaust contains POISONOUS Carbon Mono Oxide gas



2. To prevent fire hazard, please keep the Engine in operation at least 1-meter (3 feet) away from Combustible or Inflammable materials, buildings and equipment.



3. When refueling you must STOP the Engine. Please do not smoke near Engine. Wipe the spilled fuel after refueling.

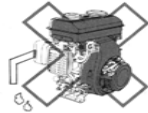
CAUTION: Spilled fuel is a fire hazard.



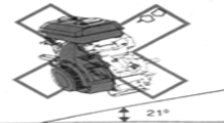
4. Do NOT cover the Engine when in operation!



5. Do NOT connect any pipe to exhaust muffler!

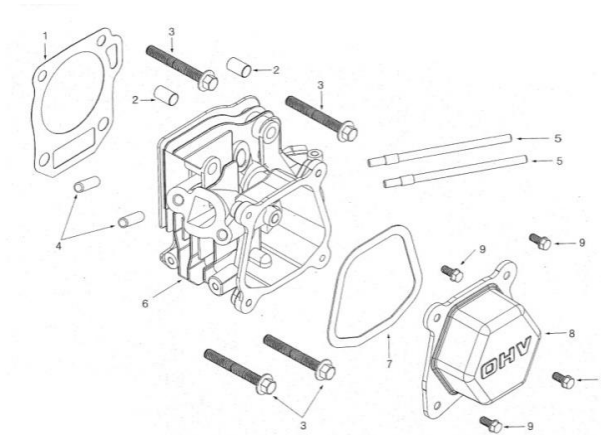


6. Do NOT tilt the Engine more than 21 degrees.



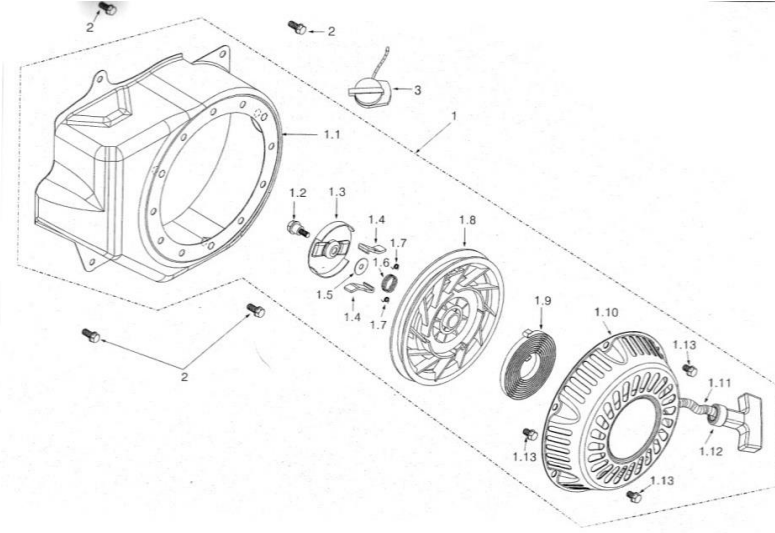
Sl. No	Part Name	Part No
1-13	Bolt M6X8	4-1.13
2	Bolt M6x12	4-2
3	Engine switch	4-3

Cylinder Head



Sl. No	Part Name	Part No
1	Gasket Cylinder head	5-1
2	Set pin 10x14	5-2
3	Bolt M8 x 60, 22	5-3
4	Stud Exhaust M8 x 32	5-4
5	Stud Intake M6 x 113	5-5
6	Cylinder head Assembly	5-6
7	Gasket Cylinder head cover	5-7
8	Cylinder head cover	5-8
9	Bolt M6x12	5-9

Recoil Starter

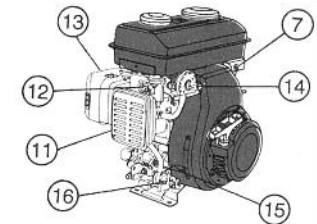
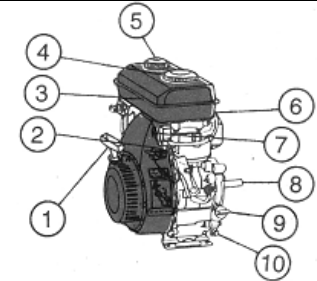


Sl. No	Part Name	Part No
1	Recoil Starter Assembly (Without fan Cover)	4-1
1-1	Fan cover	4-1.1
1-2	Pivot bolt M5 x 17	4-1.2
1-3	Ratchet guide	4-1.3
1-4	Ratchet	4-1.4
1-5	Washer - recoil 5x17x0.5	4-1.5
1-6	Friction Spoil 16x1	4-1.6
1-7	Ratchet Spring 5.5x0.2	4-1.7
1-8	Roller	4-1.8
1-9	Starter spring	4-1.9
1-10	Starter cover	4-1.10
1-11	Rope	4-1.11
1-12	Pulley handle	4-1.12

ENGINE COMPONENTS

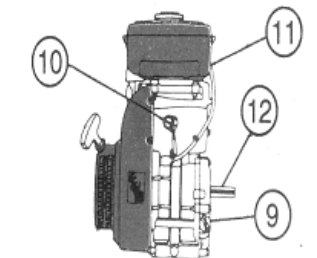
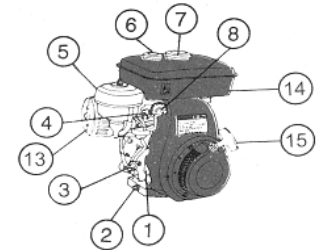
KK-GE-160

1. Recoil Starter
2. Engine Switch
3. Fuel Tank
4. Kerosene Tank Cap
5. Petrol Tank Cap
6. Spark Plug
7. Oil Alert Lamp
8. PTO Shaft
9. Engine Oil Filter Cap
10. Engine Oil Drain Bolt
11. Air Cleaner
12. Choke
13. Muffler
14. Fuel Cock
15. Throttle Weaver
16. Drain Cock



KK-GE-200

1. Throttle Lever
2. Engine Drain Bolt
3. Drain Cock
4. Choke Rod
5. Air Cleaner
6. Petrol Tank Cap
7. Kerosene Tank Cap
8. Fuel Cock
9. Engine Oil Filter Cap
10. Engine Switch
11. Spark Plug
12. P.T.O. Shaft
13. Muffler
14. Fuel Tank
15. Recoil Starter



OPERATION

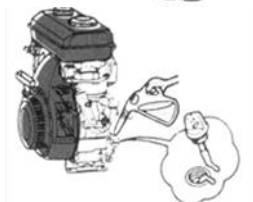
Pre-Operation Checks

Oil Level:

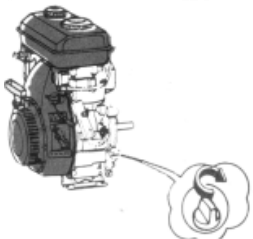
Please check the Engine Oil Level by putting the engine on a flat surface



If the oil level looks low, please check the Oil Level.
Add oil to the recommended level



Remember to tighten the Oil cap!



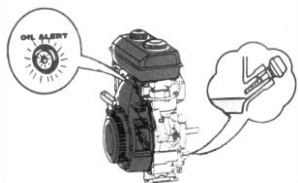
Recommended Engine Oil

If the OIL level in crankcase falls below a safe limit, then Oil Alert level system will automatically turn off the Engine.

NOTE: The Engine will not start if the Oil Alert Level System has turned off the Engine.

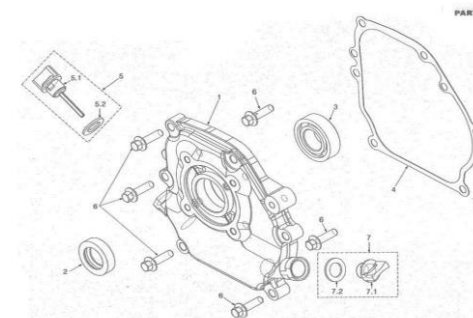
You will need to fill OIL to the recommended level, before you can restart the Engine.

SAE 10W-40 or SAE 20W-40
API Classification: SF Minimum



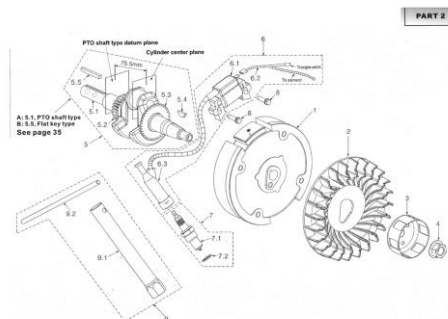
Sl. No	Part Name	Part No
9	Tools	2-9
9.1	Wrench, Spark plug	2-9.1
9.2	Handle	2-9.2

Crankcase Cover Parts



Sl. No	Part Name	Part No
1	Crankcase cover	3-1
2	Oil Seal 25x41.25x6	3-2
3	Ball Bearing 6205	3-3
4	Gasket crankcase	3-4
5	oil gauge assembly	3-5
5-1	Oil Gauge	3-5.1
5-2	seal-oil gauge	3-5.2
6	Bolt M8 x 30	3-6
7	Oil Plug assembly	3-7
7-1	Oil plug	3-7.1
7-2	Seal Oil Plug	3-7.2

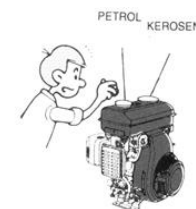
Crankshaft (Oil Sensor)



Sl. No	Part Name	Part No
1	Fly Wheel Assembly	2-1
2	Fly Wheel Fan	2-2
3	Starter Sleeve	2-3
4	Nut Fly wheel Assembly	2-4
5	Crankshaft Assembly.	2-5
5-1	Crank Shaft	2-5.1
5-2	Timing Gear	2-5.2
5-3	Governor Gear	2-5.3
5-4	Woodruff key	2-5.4
5-5	Flat Key	2-5.5
6	Ignition Coil Assembly	2-6
6-1	Ignition Coil	2-6.1
6-2	Stop lead	2-6.2
6-3	Spark Plug Cap	2-6.3
7	Spark Plug Assembly.	2-7
7-1	Spark plug	2-7.1
7-2	Washer, Spark Plug	2-7.2
8	Bolt 6 x 25	2-8

Fuel Level:

Check the fuel level before starting the Engine.



Add fuel, if the level is low
Fill fuel to the shoulder of fuel filter.

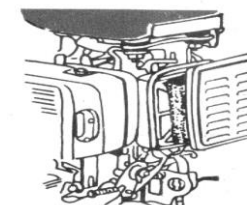
CAUTION:

- (1) Do not put Kerosene in Petrol tank, otherwise Engine will be very hard to start.
- (2) Do not put Petrol with Oil-mixed in it.
- (3) Do not put dirty, contaminated fuel

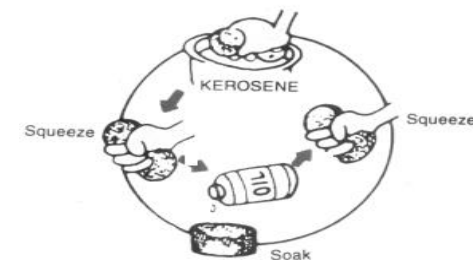
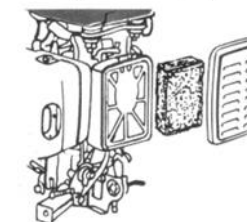


Air Filter:

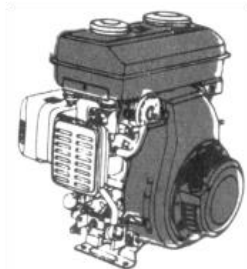
Open Air-cleaner cover and remove the air cleaner element.



Check for dust/dirt in the air filter.
If it is dirty you should clean it as shown below.

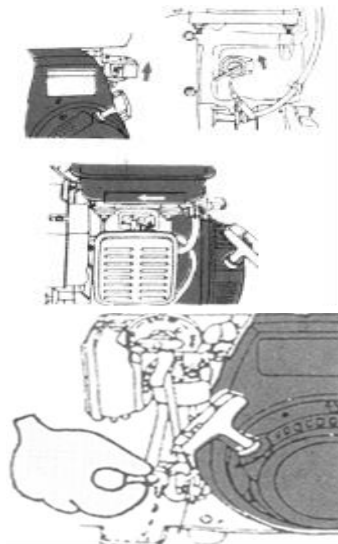


Clean air filter element and refit it in the Air-filter of the engine.

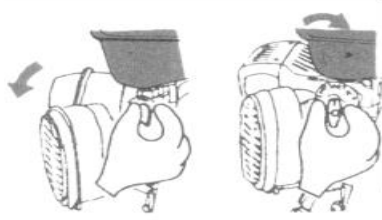


Starting the Engine (COLD START):

1. Turn the Engine switch to ON position
2. Put the choke in the shown position.
3. Turn the Drain Cock to ON position and drain the Kerosene from the carburetor.
4. Turn the Drain Cock to OFF position after you have drained the Kerosene.
5. Return the Kerosene to the Kerosene Tank.

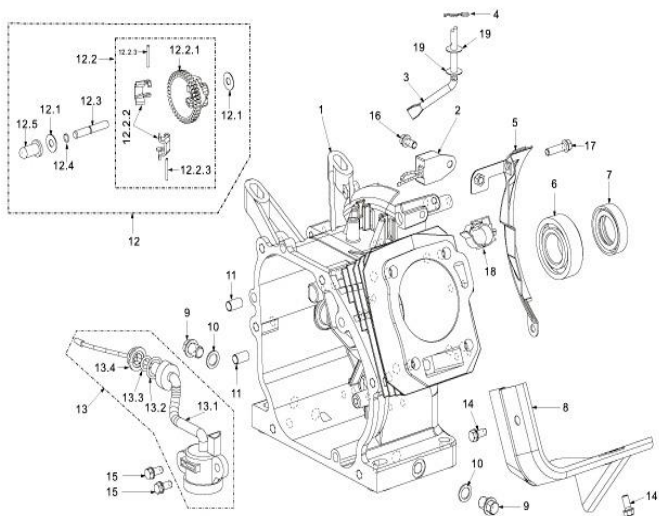


6. Turn the Fuel Cock to START / ON position



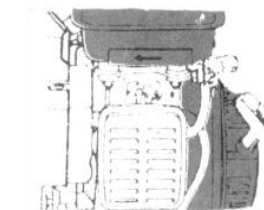
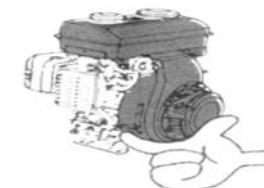
Sl. No	Part Name	Part No
12-1	Washer, slip cap 6x15x0.5	1-12.1
12-2	Centrifugal gear Assembly	1-12.2
12-2-1	centrifugal gear	1-12.2.1
12-2-2	Centrifugal block	1-12.2.2
12-2-3	pin, centrifugal block	1-12.2.3
12-3	Centre axis	1-12.3
12-4	Clip centre axis	1-12.4
12-5	Slip cap	1-12.5
13	Oil sensor Assembly	1-13
13-1	Oil sensor Body	1-13.1
13-2	O-Ring 17 x 2	1-13.2
13-3	O-Ring 11 x 2	1-13.3
13-4	Nut M10	1-13.4
14	Bolt M6 x 10	1-14
15	Bolt M6 x 14	1-15
16	Bolt M6 x 12	1-16
17	Bolt M6 x 20	1-17
18	Rubber wire hoop	1-18
19	Washer Slip Cap 6x15x0.5	1-19

**PARTS DIAGRAM & LIST-KK-GE-160/200
CRANKCASE**



Sl. No	Part Name	Part No
1	Crankcase Body	1-1
2	Current Amplifier	1-2
3	Sway bar	1-3
4	Split Clip	1-4
5	Side Plate	1-5
6	Ball Bearing 6205	1-6
7	Oil seal 25x41.25x6	1-7
8	Wind guide	1-8
9	Drain bolt	1-9
10	Washer Drain bolt	1-10
11	Set pin 8x14	1-11
12	Centrifugal gear (set)	1-12

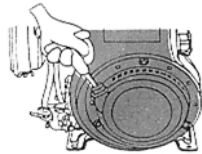
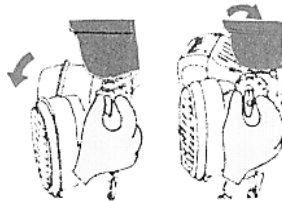
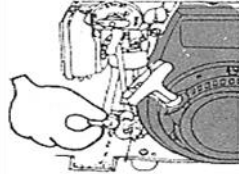
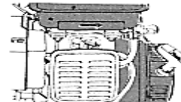
7. Increase the throttle (accelerator) level slightly
8. Make sure that there is no (minimum) load attached to the Engine
9. Pull the starter grip, until you feel the resistance
10. Then pull the rope fast
11. Do not leave the rope. Do not allow rope to snap back.
12. Return the rope slowly, by hand, to the recoil starter
13. Turn the fuel cock to RUN position.
14. Close the choke as indicated on the Engine.



Starting the Engine (HOT START):

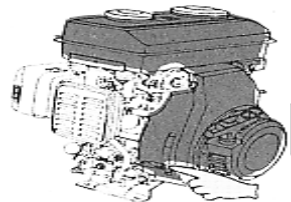
1. Turn the Engine switch to ON position
2. Close the choke as indicated on the Engine
3. Raise the throttle lever slightly
4. Make sure that there is no (minimum) load attached to the Engine.
5. Turn the Fuel Cock to RUN / ON position.
6. Pull the starter grip, until you feel the resistance
7. Then pull the rope fast.
8. Do not leave the rope. Do not allow the rope to snap back.

Return the rope slowly, by hand, to the recoil starter



Stopping the Engine:

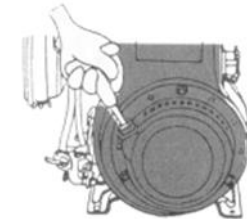
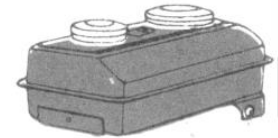
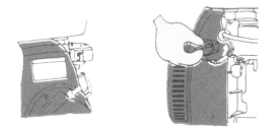
1. Move the throttle (accelerator) lever fully down.





TROUBLE SHOOTING

The engine does not start:

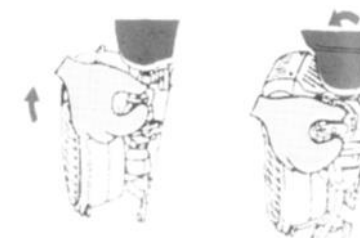
1. Is the Engine SWITCHED – OFF?
2. Check Engine OIL level. Is it low?
3. Check both fuel levels
4. Is the fuel reaching the carburetor?
5. Is there good spark in the Spark Plug?
6. If you are still not able to start it, please take the engine to the authorized dealer.



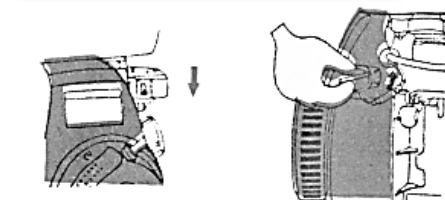
TECHNICAL SPECIFICATIONS

	KK-GE-200 	KK-GE-160 
Engine Type	4-Stroke, Air-cooled, 1-Cylinder, Side Valve	
Displacement	196 cc	163 cc
Bore x Stroke	68 x 54 mm	68 x 45 mm
Compression Ratio	4.5 : 1	6 : 1
Fuel	Petrol Start – Kerosene Run	
Rated Power	2.6kW @ 3600 RPM	2.4kW @ 3600 RPM
Max Torque	0.8 Kg.m./2500 RPM	1.05 Kg.m./2500 RPM
Ignition System	Non-contact TCI	
Ignition Timing	20° BTDC	
Air Cleaner	Semi-dry, oil bath, dual, double silent and cyclone type	
Kerosene Tank	3.6 L	3.6 L
Petrol Tank	150 ml	150 ml
Lube Oil Tank	0.6 L	0.6 L
PTO Shaft	Keyway and internal	
PTO Shaft Rotation	Counter clockwise from drive's end	
Net Weight	16 Kg	15 Kg

2. Turn the Fuel Cock to STOP / OFF position



3. Turn the Engine switch to OFF position.



NOTE: In case of emergency, in order to stop the engine just turn the switch to OFF position.

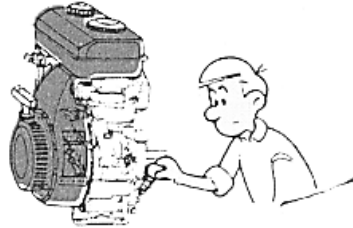
MAINTENANCE

Item \ Period	Before Each Use	First Month	Every 3-Months	Every 6-Months	1-Year	3-Years
Engine Oil	Check	Change		Change		
Air Cleaner	Check		Clean			
Spark Plug				Check, Clean, Readjust		
Muffler					Clean	
Cylinder Head					Clean	
Fuel Filter & Fuel Pipe					Clean	Change
Valves					Check, Readjust	

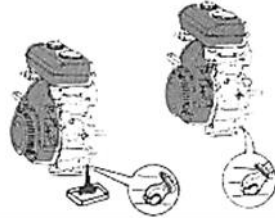
Important:

- Oil should be changed after first 20 hours of use. After that OIL should be changed every 100-hours of use.
- If you are in dusty environment, service more frequently
- Always use genuine spare parts and take it for servicing to authorized dealers.

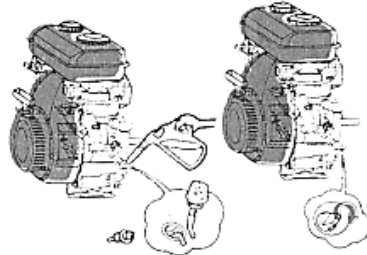
Oil Change:
Remove Oil Filter cap



Remove the drain bolt, and drain the old oil.

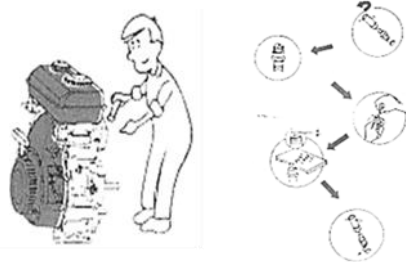


1. Tighten the drain bolt.
2. Fill the new Recommended Oil to the maximum level (neck of the oil filler)
3. Tighten the Oil Filler cap.



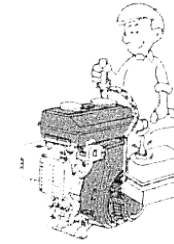
Spark Plug:

1. Remove the Spark Plug
 2. Clean the carbon deposits
 3. Measure the gap – it should be 0.6-0.7 mm
 4. If necessary, replace the spark plug
- Note:** Always use genuine spare parts only.

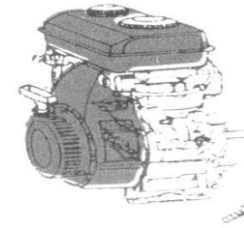
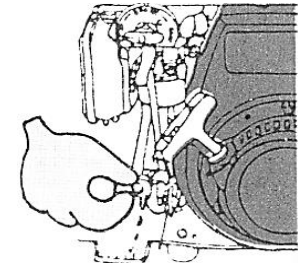


STORAGE

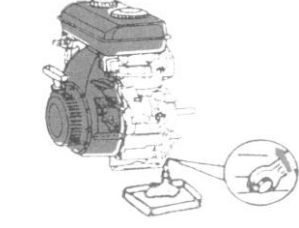
1. Drain the fuel from 2 fuel tanks



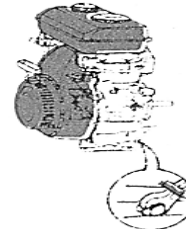
2. Drain fuel from Carburetor



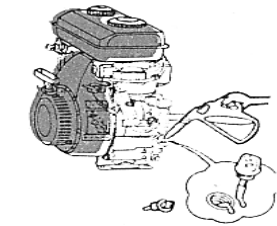
3. Remove the Oil Filter cap



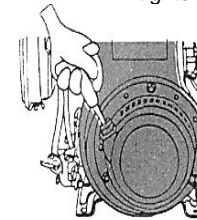
4. Remove the drain bolt and drain the oil



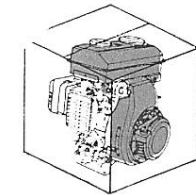
5. Close the oil drain bolt and tighten it



6. Fill new recommended oil to the max level



7. Pull the recoil starter slowly until resistance is left



8. Pack it in a closed box and store it.