

Important: (1) Normal maintenance and adjustments to the product is the responsibility of the customer. (2) Normal wear and tear is not covered under warranty. (3) Rubber/plastic parts and consumables such as blades, clutch and clutch-bell, spark-plugs, nylon line, air-filters, fuel-filters, oil seals etc. are not covered under the warranty.

No Warranty On Electrical Motor / Electrical Parts / Battery Etc.

Incidental / Consequential Loss: KisanKraft Limited or its manufacturers will not be liable for general damages, including bodily injuries, or for incidental or consequential damages including, but not limited to, loss of use, loss of profits, loss of production, expense of substitute equipment or other commercial loss or damage.

Limitation of Liability: This limited warranty is in lieu of all other express warranties, obligations, or liabilities. Any implied warranties, obligations or liabilities, including, but not limited to, any implied warranty of merchantability shall be limited in duration to the applicable warranty period. Any action for breach of any warranty hereunder, including, but not limited to, any implied warranty of merchantability must be brought within the applicable warranty period.

Modifications of Warranty: No agent, representative, dealer, or employee of KisanKraft Limited or any of its manufacturers has the authority to increase or alter the obligations of this warranty.

Assignment / Transfer of warranty: The warranty cannot be assigned and shall not transfer if the product is resold by the first buyer. The above warranties are extended to the first end user (original purchaser), and no warranty is made, nor authorized to be made assignable on resale by the first end user.

What you must do to obtain limited warranty service: To obtain performance of any obligation under this warranty for failure during the applicable warranty period, deliver the defective product, to the nearest Authorized Dealer. KisanKraft Limited, its manufacturers and its dealers reserve the right to inspect the claimed defective part(s) to determine if the malfunction is the result of a defect covered by this warranty. Please note that the decision of KisanKraft Limited with respect to any warranty claim is final.

Receipt is required for availing warranty services

Jurisdiction: All disputes are subject to Bangalore court's jurisdiction.

Our Products

- ◆Chainsaws◆Brush Cutters and Accessories◆Harvesters◆
- ◆Engines and Water Pumps◆Hand Tools◆Garden Tools◆
- ◆Cultivators and Accessories◆Sprayers and Accessories◆
- ◆Transplanter and Post Hole Digger◆Milking Machines◆

This warranty is null & void, if you fail to register the warranty with KisanKraft by sending the KisanKraft Copy with dealer's stamp.

KisanKraft Limited (formerly known as KisanKraft Machine Tools P Ltd)

🌐: www.kisankraft.com ✉: info@kisankraft.com ☎: +91.80.22178200

Product	THERMAL FOGGING SPRAYER	KisanKraft Invoice Date	
Brand	KisanKraft	KisanKraft Invoice No.	
Model	<input checked="" type="checkbox"/> KK-TF 8625S		
WARRANTY PERIOD	6 MONTHS	FOR THE SPECIFIED PERIOD FROM THE DATE OF SALE OR DELIVERY WHICHEVER IS EARLIER.	
Dealer's Invoice Date		Dealer's Invoice No.	
Buyer's Info (Name, Address, Phone, etc.):		Dealer's Stamp (Address, Phone, TIN, etc.):	
Buyer's Sign		Dealer's Sign	

What is covered: KisanKraft Limited and its manufacturers warrant this product to be free from defects in material or workmanship. All parts defective in material and workmanship are covered.

This warranty will only cover defects arising under normal usage.

This warranty is limited to repair or replacement by KisanKraft Limited or its manufacturers at the premises of Authorized Dealers, of such parts as appear to KisanKraft or its manufacturers, upon inspection, to be defective in material and/or workmanship. KisanKraft or its manufacturers make no warranty with respect to trade accessories not manufactured or sold by them.

What is not covered: The *warranty shall become null and void* and neither KisanKraft Limited nor any of its manufacturers, nor its authorized dealers assumes any responsibility, if the failure was caused by the following:

- (1) Operation of product with incorrect fuel or lubricants,
- (2) Incorrect usage of machine or misuse,
- (3) Lack of maintenance,
- (4) Negligence,
- (5) Accident or physical damage,
- (6) Repairs made by unauthorized parties and/or with unauthorized parts,
- (7) Improper set up, adjustments, tampering or altered products

Note: *The purchase is not contingent upon a product demonstration. The purchaser shall satisfy himself with the product, including any product demonstration or verification of any function, before buying. KisanKraft Limited or its authorized dealers, including online sellers, shall not be liable to give any on-site demonstration after purchase of any of the product.*

This warranty is null & void, if you fail to register the warranty with KisanKraft by sending the KisanKraft Copy with dealer's stamp.

KisanKraft Limited (formerly known as KisanKraft Machine Tools P Ltd)

🌐: www.kisankraft.com ✉: info@kisankraft.com ☎: +91.80. 22178200

Important: (1) Normal maintenance and adjustments to the product is the responsibility of the customer. (2) Normal wear and tear is not covered under warranty (3) Rubber/plastic parts and consumables such as blades, clutch and clutch-bell, spark-plugs, nylon line, air-filters, fuel-filters, oil seals etc. are not covered under the warranty.

No Warranty On Electrical Motor / Electrical Parts / Battery Etc.

Incidental / Consequential Loss: KisanKraft Limited or its manufacturers will not be liable for general damages, including bodily injuries, or for incidental or consequential damages including, but not limited to, loss of use, loss of profits, loss of production, expense of substitute equipment or other commercial loss or damage.

Limitation of Liability: This limited warranty is in lieu of all other express warranties, obligations, or liabilities. Any implied warranties, obligations or liabilities, including, but not limited to, any implied warranty of merchantability shall be limited in duration to the applicable warranty period. Any action for breach of any warranties hereunder, including, but not limited to, any implied warranty of merchantability must be brought within the applicable warranty period.

Modifications of Warranty: No agent, representative, dealer, or employee of KisanKraft Limited or any of its manufacturers has the authority to increase or alter the obligations of this warranty.

Assignment / Transfer of warranty: The warranty cannot be assigned and shall not transfer if the product is resold by the first buyer. The above warranties are extended to the first end user (original purchaser), and no warranty is made, nor authorized to be made assignable on resale by the first end user.

What you must do to obtain limited warranty service: To obtain performance of any obligation under this warranty for failure during the applicable warranty period, deliver the defective product, to the nearest Authorized Dealer. KisanKraft Limited, its manufacturers and its dealers reserve the right to inspect the claimed defective part(s) to determine if the malfunction is the result of a defect covered by this warranty. Please note that the decision of KisanKraft Limited with respect to any warranty claim is final.

Receipt is required for availing warranty services

Jurisdiction: All disputes are subject to Bangalore court's jurisdiction.

Our Products	<ul style="list-style-type: none"> ◆Chainsaws◆Brush Cutters and Accessories◆Harvesters◆ ◆Engines and Water Pumps◆Hand Tools◆Garden Tools ◆ ◆Cultivators and Accessories◆Sprayers and Accessories◆ ◆Transplanter and Post Hole Digger ◆Milking Machines ◆
---------------------	--

This warranty is null & void, if you fail to register the warranty with KisanKraft by sending the KisanKraft Copy with dealer's stamp.

KisanKraft Limited (formerly known as KisanKraft Machine Tools P Ltd)

🌐: www.kisankraft.com ✉: info@kisankraft.com ☎: +91.80. 22178200

Product	THERMAL FOGGING SPRAYER	KisanKraft Invoice Date	
Brand	KisanKraft	KisanKraft Invoice No.	
Model	<input checked="" type="checkbox"/> KK-TF 8625S		
WARRANTY PERIOD	6 MONTHS	FOR THE SPECIFIED PERIOD FROM THE DATE OF SALE OR DELIVERY WHICHEVER IS EARLIER.	
Dealer's Invoice Date		Dealer's Invoice No.	
Buyer's Info (Name, Address, Phone, etc.):		Dealer's Stamp (Address, Phone, TIN, etc.):	
Buyer's Sign		Dealer's Sign	

What is covered: KisanKraft Limited and its manufacturers warrant this product to be free from defects in material or workmanship. All parts defective in material and workmanship are covered.

This warranty will only cover defects arising under normal usage.

This warranty is limited to repair or replacement by KisanKraft Limited or its manufacturers at the premises of Authorized Dealers, of such parts as appear to KisanKraft or its manufacturers, upon inspection, to be defective in material and/or workmanship. KisanKraft or its manufacturers make no warranty with respect to trade accessories not manufactured or sold by them.

What is not covered: The *warranty shall become null and void* and neither KisanKraft Limited nor any of its manufacturers, nor its authorized dealers assumes any responsibility, if the failure was caused by the following:

- (1) Operation of product with incorrect fuel or lubricants,
- (2) Incorrect usage of machine or misuse,
- (3) Lack of maintenance,
- (4) Negligence,
- (5) Accident or physical damage,
- (6) Repairs made by unauthorized parties and/or with unauthorized parts,
- (7) Improper set up, adjustments, tampering or altered products

Note: *The purchase is not contingent upon a product demonstration. The purchaser shall satisfy himself with the product, including any product demonstration or verification of any function, before buying. KisanKraft Limited or its authorized dealers, including online sellers, shall not be liable to give any on-site demonstration after purchase of any of the product.*

This warranty is null & void, if you fail to register the warranty with KisanKraft by sending the KisanKraft Copy with dealer's stamp.

KisanKraft Limited (formerly known as KisanKraft Machine Tools P Ltd)

🌐: www.kisankraft.com ✉: info@kisankraft.com ☎: +91.80. 22178200



Wide Range of Products for Every Need



User Manual



KisanKraft Limited

(Formerly known as KisanKraft Machine Tools Pvt. Ltd)

Sri Huchhanna Tower, #4, 1st Main, 7-A Cross, Maruthi Layout, Dasarahalli,
HAF Post, Hebbal, Bangalore 560024, Karnataka, INDIA

- ◆ Bangalore (HO) ◆ Ahmedabad ◆ Bhopal ◆ Bhubaneswar ◆ Coimbatore ◆
- ◆ Jammu ◆ Guwahati ◆ Shimla ◆ Hubli ◆ Hyderabad ◆
- ◆ Jaipur ◆ Karnal ◆ Kolkata ◆ Lucknow ◆ Pune ◆ Raipur ◆

For more information give **MISSED CALL: 07676065555**



Many of our products have BIS: ISI certification.



CONTENTS

BEFORE GETTING STARTED 7

APPLICATION AND FEATURES 7

SAFETY INSTRUCTIONS 7

OVERVIEW 8

OPERATION 9

MAINTENANCE 11

TECHNICAL SPECIFICATIONS 11

TROUBLE SHOOTING 12

PARTS DIAGRAM & LIST 14

KisanKraft has a large range of products to serve the farmers. A list of our products is given below:

<p>Brush Cutters and Accessories</p> <ul style="list-style-type: none"> Brush Cutter/Power Weeder Backpack Brush Cutter Tea Pruner Pole pruner with Engine Reaper Attachment Blades-Circular Blades (2 & 3 points) Baffle Nylon Rope Tap & Go <p>Chainsaws</p> <ul style="list-style-type: none"> Petrol Chainsaw Electric Chainsaw Chain Sharpening Machine <p>Engines and Water Pumps</p> <ul style="list-style-type: none"> Engine –Diesel-(Horizontal) Engine –Diesel-(Vertical) Engine-Kerosene Water Pump with Petrol Engine Water Pump with Kerosene Engine Water Pump with Diesel Engine <p>Hand Tools</p> <ul style="list-style-type: none"> Secateurs Folding Saw Garden Rake Garden Shovel Hedge Shear Lopper Telescopic Hedge Shear Telescopic Lopping Shear Tree Pruner Telescopic Steel Pipe & Fruit Picker Bag Sheep Shear <p>Garden Tools</p> <ul style="list-style-type: none"> Electric Pressure Washer Hedge Trimmer Lawn Mower (Electric, Petrol & Manual) Leaf Blower 	<p>Cultivators and Accessories</p> <ul style="list-style-type: none"> Petrol and Diesel <p>Sprayers and Accessories</p> <ul style="list-style-type: none"> Battery Sprayer Portable Power Sprayer Trolley Sprayer Manual Knapsack Sprayer Manual Pressure Sprayer Rose Cans Hose Crimping Machine HTP Sprayer HTP Delivery Hose HTP Hose Reel HTP Stand HTP Gun / Lance(Brass Rod) Knapsack Power Sprayer Mister / Duster / Granuel Spreader HTP Sprayer Set with Diesel Engine HTP Sprayer Set with Kerosene Engine Fogging Machine <p>Milking Machine</p> <ul style="list-style-type: none"> Wood Shredder Fodder Ensiling Chaff Cutter Fodder Grinder Chaff Cutter Fodder Mini Chaff Cutter <p>Harvester</p> <ul style="list-style-type: none"> Maize Sheller Maize Sheller + Dehusker Maize Combine Harvester Onion Digger Carlotti Italy Tea Leaf Harvester Sugarcane Combine Harvester Sugarcane Leaf Stripper <p>Transplanter and Post Hole Digger</p> <ul style="list-style-type: none"> Paddy Transplanter (2 & 8 Rows) Transplanter-Vegetable & Tobacco Post Hole Digger(4" to 14" Augers)
---	---

SI No.	Description	SI No.	Description
58.	Screw M4x10	89.	Pipe, Fuel Inlet
59.	Spring Washer Ø 4	90.	Grommet
60.	Nut M4	91.	Fuel Filter
61.	Electric Air Pump	92.	Air Pipe
62.	Fuel Tank Board	93.	Two-Way Valve
63.	Flexible Hose	94.	Nut M5
64.	One Way Valve (Big To Small)	95.	Flexible Hose
65.	Flexible Hose	96.	Flexible Hose
66.	Circuits Cover	97.	Three Way Connector
67.	Air Filter Cover	98.	Flexible Hose
68.	Air Filter Element	99.	Connector Screw
69.	Screw M5x40	100.	Two Way Connector
70.	Air Filter Base	101.	Chemical Outlet Connector
71.	Carburetor	102.	Gasket
72.	Gasket	103.	Air Intake Nut
73.	Carburetor Connector	104.	Gasket
74.	Hose Fitting	105.	Splice Nut
75.	Flexible Hose	106.	Flexible Hose
76.	O-RING Ø 50x2.4	107.	Chemical Filter Assy
77.	Guide Column	108.	Air Intake Connector
78.	Suction Board	109.	Tank Lid
79.	Diaphragm	110.	Tank Lid Gasket
80.	Washer	111.	Drain Cap
81.	Suction Back Board	112.	Splice Nut
82.	Screw M6x12	113.	O-RING Ø 17x2.65
83.	O-RING Ø 50x2.65	114.	O-RING Ø 20x3.1
84.	Carburetor Base	115.	Drain Connector
85.	Carburetor Gasket	116.	Chemical Tank
86.	Flexible Hose	117.	Fuel Tank
87.	One Way Valve (Small To Big)	118.	Fixer

Product	THERMAL FOGGING SPRAYER	KisanKraft Invoice Date	
Brand	KisanKraft	KisanKraft Invoice No.	
Model	□ KK-TF 8625S		
WARRANTY PERIOD	6 MONTHS	FOR THE SPECIFIED PERIOD FROM THE DATE OF SALE OR DELIVERY WHICHEVER IS EARLIER.	
Dealer's Invoice Date		Dealer's Invoice No.	
Buyer's Info (Name, Address, Phone, etc.):		Dealer's Stamp (Address, Phone, TIN, etc.):	
Buyer's Sign		Dealer's Sign	

What is covered: KisanKraft Limited and its manufacturers warrant this product to be free from defects in material or workmanship. All parts defective in material and workmanship are covered.

This warranty will only cover defects arising under normal usage.

This warranty is limited to repair or replacement by KisanKraft Limited or its manufacturers at the premises of Authorized Dealers, of such parts as appear to KisanKraft or its manufacturers, upon inspection, to be defective in material and/or workmanship. KisanKraft or its manufacturers make no warranty with respect to trade accessories not manufactured or sold by them.

What is not covered: The warranty shall become null and void and neither KisanKraft Limited nor any of its manufacturers, nor its authorized dealers assumes any responsibility, if the failure was caused by the following:

- (1) Operation of product with incorrect fuel or lubricants,
- (2) Incorrect usage of machine or misuse,
- (3) Lack of maintenance,
- (4) Negligence,
- (5) Accident or physical damage,
- (6) Repairs made by unauthorized parties and/or with unauthorized parts,
- (7) Improper set up, adjustments, tampering or altered products.

Note: The purchase is not contingent upon a product demonstration. The purchaser shall satisfy himself with the product, including any product demonstration or verification of any function, before buying. KisanKraft Limited or its authorized dealers, including online sellers, shall not be liable to give any on-site demonstration after purchase of any of the product.

This warranty is null & void, if you fail to register the warranty with KisanKraft by sending the KisanKraft Copy with dealer's stamp.

KisanKraft Limited (formerly known as KisanKraft Machine Tools P Ltd)

Important: (1) Normal maintenance and adjustments to the product is the responsibility of the customer. (2) Normal wear and tear is not covered under warranty. (3) Rubber/plastic parts and consumables such as blades, clutch and clutch-bell, spark-plugs, nylon line, air-filters, fuel-filters, oil seals etc. are not covered under the warranty.

No Warranty On Electrical Motor / Electrical Parts / Battery Etc.

Incidental / Consequential Loss: KisanKraft Limited or its manufacturers will not be liable for general damages, including bodily injuries, or for incidental or consequential damages including, but not limited to, loss of use, loss of profits, loss of production, expense of substitute equipment or other commercial loss or damage.

Limitation of Liability: This limited warranty is in lieu of all other express warranties, obligations, or liabilities. Any implied warranties, obligations or liabilities, including, but not limited to, any implied warranty of merchantability shall be limited in duration to the applicable warranty period. Any action for breach of any warranty hereunder, including, but not limited to, any implied warranty of merchantability must be brought within the applicable warranty period.

Modifications of Warranty: No agent, representative, dealer, or employee of KisanKraft Limited or any of its manufacturers has the authority to increase or alter the obligations of this warranty.

Assignment / Transfer of warranty: The warranty cannot be assigned and shall not transfer if the product is resold by the first buyer. The above warranties are extended to the first end user (original purchaser), and no warranty is made, nor authorized to be made assignable on resale by the first end user.

What you must do to obtain limited warranty service: To obtain performance of any obligation under this warranty for failure during the applicable warranty period, deliver the defective product, to the nearest Authorized Dealer. KisanKraft Limited, its manufacturers and its dealers reserve the right to inspect the claimed defective part(s) to determine if the malfunction is the result of a defect covered by this warranty. Please note that the decision of KisanKraft Limited with respect to any warranty claim is final.

Receipt is required for availing warranty services

Jurisdiction: All disputes are subject to Bangalore court's jurisdiction.

Our Products

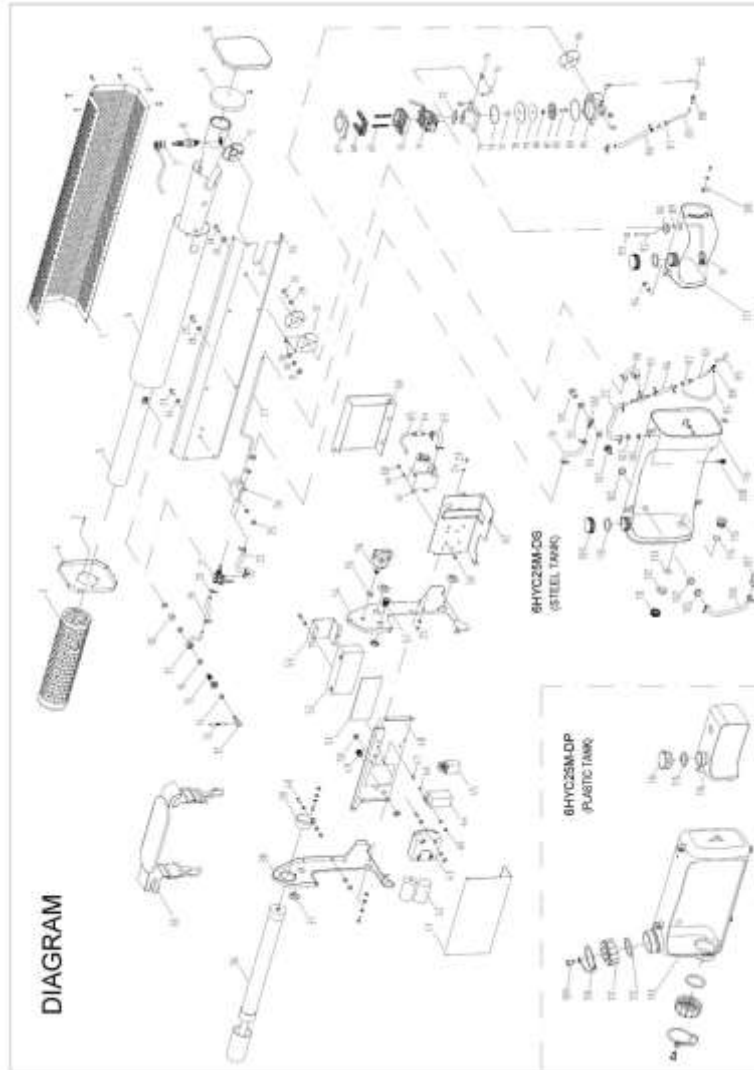
- ◆Chainsaws◆Brush Cutters and Accessories◆Harvesters◆
- ◆Engines and Water Pumps◆Hand Tools◆Garden Tools◆
- ◆Cultivators and Accessories◆Sprayers and Accessories◆
- ◆Transplanter and Post Hole Digger◆Milking Machines◆

This warranty is null & void, if you fail to register the warranty with KisanKraft by sending the KisanKraft Copy with dealer's stamp.

KisanKraft Limited (formerly known as KisanKraft Machine Tools P Ltd)

SI No.	Description	SI No.	Description
1.	Outer Wire Guard	29.	Bolt M6x12
2.	Screw	30.	Spring Washer
3.	Front Wire Guard Assy	31.	Nut M6
4.	Front Holder, Outer Wire Guard	32.	Fixing Plate
5.	Air Duct	33.	Bolt M6x20
6.	Air Duct Cover	34.	Outer Wire Fix
7.	Spark Plug Cap	35.	Carrying Strap
8.	Spark Plug	36.	Manual Air Pump Assy.
9.	Back Plate	37.	Cable Clip
10.	Back Holder, Outer Wire Guard	38.	Left Support
11.	Combustion Chamber	39.	Holder, Manual Air Pump
12.	Nozzle Core	40.	Screw M5x16
13.	Metal Rod	41.	Dust-Proof Cover
14.	Brass Gasket	42.	Battery 1.5v
15.	Nozzle Body	43.	Battery Holder
16.	Brass Gasket	44.	Ignition Coil
17.	Chemical Discharge Tube	45.	Relay Assy
18.	Chemical Discharge Cover	46.	Washer ϕ 4
19.	Flexible Hose	47.	Screw M4x16
20.	Hose Clamp ϕ 9	48.	Plate
21.	Three Way Chemical Cock	49.	Charging Socket
22.	Flexible Hose	50.	Cable Clip
23.	Screw M5x12	51.	Sponge Gasket
24.	Washer ϕ 5	52.	Storage Battery
25.	Nut M5	53.	Battery Guard
26.	Fixing Plate	54.	Right Support
27.	Air Discharge	55.	Gasket
28.	Washer ϕ 6	56.	Pressure Switch
29.	Button Switch	57.	Three Way Connector

PARTS DIAGRAM & LIST



BEFORE GETTING STARTED


Thank you for your purchase and use of our products. In order to avoid accidents or injury, **please read this manual carefully** before using the machine. After reading, preserve it for further reference.

APPLICATION AND FEATURES

1. The right machine for agricultural and forestry insect control and for the prevention of epidemic disease.
2. Simplified design for easy operation and maintenance
3. Light in weight and balanced.
4. Strong power burst, long spray range, high work efficiency.
5. Stainless Steel Body to prevent corrosion.

SAFETY INSTRUCTIONS

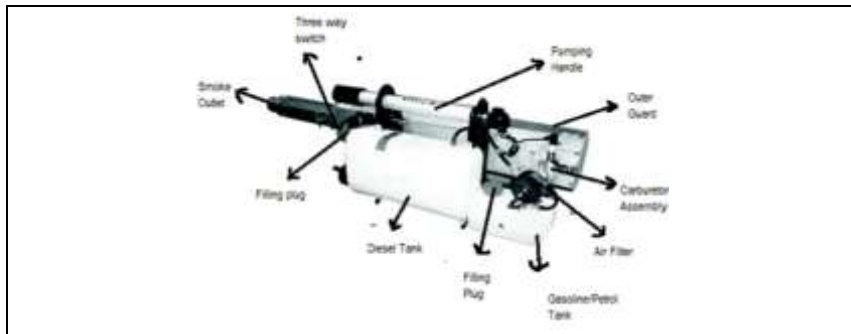
1. During the use and handling of chemicals, the operator must comply with the safety operation instructions provided by the chemical manufacturer to avoid damage to the human being and the environment.
2. Always wear protection suit when handling chemicals.
3. Maintenance and replenishment of chemicals should be done only when the fogger machine is in cool state.
4. Do not enter into the room directly that has been sprayed with chemicals.
5. Check the fogger before each operation.
6. Do not lay the fogger on its side.
7. Do not operate or refuel the machine near the fire.
8. Fogger should not be operated close to any person (a radius of 3 meters).
9. Do not touch the fogger body while it is still hot.
10. It is advisable to check and maintain the battery at regular intervals.(KK TF-8625S/KK TF-8630)
11. **To avoid burning of hand or clothes, while the engine is running, do not touch the cooling pipe or the end part of the combustion chamber.** .(KK TF-8625S/KK TF-8630)
12. When fogging, do not point the machine too closely to the plant or other objects. Do not let the cooling pipe touch the objects that are flammable. It is better to keep a distance of 2 meters. Do not do fogging in flammable locations.
13. Do not use wood pulp or wood sticks or other flammable objects to put into the combustion chamber because it may cause bursting of sparks resulting in burns to the people around it /and or even can cause a fire.
14. The temperature in the chamber could reach up to 1000°C during operation, make sure the spray volume should be at higher levels to help cool down the temperature in the chamber, as low spray volume does not help to resist the high temperature from increasing making the stainless steel melt under 1500°C .

	Never refuel while the engine is ON. When refueling is needed, turn off the engine first and then wait for about 15-20 minutes for the engine to cool down. If the engine is still hot, fuel spills could result in a fire. It is recommended to fill chemical first before filling the fuel and not to keep the engine idle without fogging.
---	--

Warning signs

	Read the manual		Use a mask
	Wear protective clothing		Use gloves
	Wash after work		Caution! Risk of burning
	Safety warnings		Caution! Risk of fire

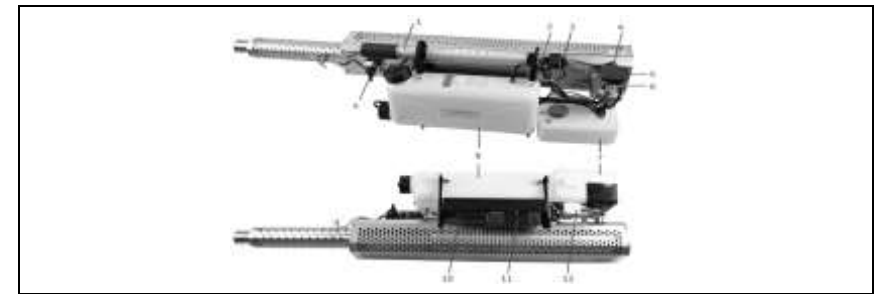
OVERVIEW



Problem	Indication	Reason	Remedy
The machine stops suddenly	Fuel empty	Fuel used up.	Refuel.
	No air into the engine	Diaphragm deformed or damaged	Clean or replace the diaphragm
	Clogged fuel pipe	Clogged filter wire	Clean the filter wire and fuel tank
	Slack fuel hose, air leakage	Slack hose connection	Fix leaky part, tighten the bolts and nuts
	Over or lack of distribution of fuel	The cock for fuel regulator was loose, too much / too small fuel control	Adjust the cock for fuel regulator. Tighten bolts and nuts
Capacity of fog is reduced	Lower engine sound and insufficient power	Clogged carbon crust inside the fogger pipe	Clean the carbon crust using a brush
	Air leak from the chemical tank lid	Chemical tank lid is not tight	Tighten the chemical tank lid
	The cock connection for chemical pipe leaking	The cock connection is not tight after long usage	Tighten the cock connection
	Nozzle clogged partially	Oil, dirt and impurities got deposited after long usage	Drain the chemical tank and clean nozzle tip
No fog	Less pressure in the chemical tank	The one-way pressure valve is not working well	Check and clean or replace the one-way pressure valve
	No pressure in the chemical tank	Chemical tank lid is not tightened yet	Tighten the chemical tank lid
	Holes of nozzle seats clogged	The one-way pressure valve is not working or pressure pipe leakage Too much carbon got deposited	Replace one-way pressure valve or repair pressure pipe Clean or replace the nozzle

TROUBLE SHOOTING

Problem	Indication	Reason	Remedy
No ignition	No sound when starting	The battery box is not closed tightly	Close the battery box tightly
		Low capacity of battery	Replace the batteries
		Incorrect battery position	Fix the battery position correctly
		Wire falling off from the electrical circuit (e.g. Spark plug wire)	Inspect and repair electrical circuit
		Spark plug failed or incorrect gap	Replace the spark plug or adjust the gap to be 1.5-2mm
Normal ignition, but cannot start	Fuel is not sucked	Fuel inlet valve failed	Replace the valve
		Fuel tank lid is not closed tightly	Tighten the fuel tank lid
		Fuel filter wire is clogged	Clean the fuel filter wire
		Diaphragm deformed or torn	Clean the fuel tank and replace the diaphragm
	Air leakage from manual air pump	While pumping, feels very light	Replace the pump leather cup or repair the leaky section
	Carburetor flooding	Start again, failed again	Start according to the procedures, refer to "how to start"
Running is not stable	Less power	End of the fogger pipe has too much carbon crust, resulting in inadequate air input to the carburetor and combustion chamber	Use a carbon brush to clean the carbon crust
		Diaphragm containing oil, dirt or deformed or damaged	Clean the diaphragm or replace with a new one
		Fuel regulator valve is loose	Adjust it and tighten the lock nut



OPERATION

Preparation

1. Check and make sure all the electrical circuits and pipe connections are in good status.
2. Put the batteries into the battery box.
3. Pull the air pump handle and pump until the pressure is formed and the spark plug gives ignition noise.
4. Then fill with gasoline in the fuel tank and fill in chemical and smoke solvent into the chemical tank. Make sure the tank lids are tightly sealed.



How to start:

(I) Electric Starting:

- a) Firstly press the primer bulb several times until the observation of petrol coming inside and flowing to the carburetor base from the overflow hose.
- b) Adjust the throttle valve to "ON" direction to the 3/4 position.
- c) Press the start button and keep for several seconds. During this time, according to the state of engine sound, the throttle lever can be adjusted until you can hear crisp and stable sound. Release the button after successfully started and adjust the throttle valve fully opened.
- d) After running for 20 seconds (should not be more than 60 seconds to avoid machine damage because of heat), open the chemical cock to "ON" position and start to spray.



(II) Manual Starting:

- a), b) same as above in (I).
- c) Pull the pump handle and pump evenly (one back and forth motion takes about 1 second), when you hear the pop voice, continue pumping until the engine runs continuously (if after repeated times still not activated, you can adjust the throttle valve slightly while pumping), then return the pump handle to its initial position. Adjust the throttle valve fully opened.
- d) Same as above in (I).



How to Fog:

1. **Once the engine starts running and becomes stable, immediately fogging must be done, do not let the engine idle for more than 1 minute without fogging.**
2. Carry the machine on your shoulder and grasp the handle tightly.
3. Open the chemical cock into the position "OPEN" slowly. A few seconds later carburetion will be started. Adjust discharge fluid as needed.
4. Wherever possible, adjust the machine to work horizontally. While tilting spray is needed, do not tilt the machine too much. The too big tilting angle will cause the fuel filter coming out of the fuel and thus causing engine to stop.
5. If fogging needs to be stopped for a while move the chemical cock to position "DISCHARGE" and when spray again, turn the cock to position "OPEN" for continuing.
6. **After the fogging is done or the chemical tank is empty, let the engine to rest for 10-15 minutes or cool down first before refilling the chemical.**

How to STOP the machine:

To stop fogging, make sure to turn the chemical cock to position "DISCHARGE" firstly so that the remaining chemical in the hose can be the fuel cock to stop the engine. And lastly, turn the chemical cock to the position "CLOSE" or "OFF"

Safe Use of the Fogger

1. To avoid burning of hand or clothes, while the engine is running, do not touch the cooling pipe or the end part of the combustion chamber.

2. When fogging, do not point the machine too closely to the plant or other objects. Do not let the cooling pipe touches objects that are flammable. It is better to keep a distance of 2 meters. Do not do fogging in flammable locations.
3. Do not use wood pulp or wood sticks or other flammable objects to put into combustion chamber because it makes burst of sparks that can cause burns to the people around it or even cause a fire.

	Never refuel while the engine is ON. When refueling is needed, turn off the engine first and then wait for about 15-20 minutes for the engine to cool down. If the engine is still hot, fuel spills could result in a fire. It is recommended to fill chemical first before filling the fuel and not to keep the engine idle without fogging
--	---

MAINTENANCE

CLEANING AND STORAGE

1. **After the fogger is used, drain out the chemical that still remains in the chemical tank. Fill in 0.5 liter clean diesel in the tank, then, shake and rinse.**
2. The electric circuit must always be kept clean and dry, not exposed to liquid chemical or water.
3. Turn on the machine once again to spray out the diesel so as to rinse the chemical pipe and valve.
4. After the engine is cool, clean the parts that may build up carbon, such as .
5. Clean up the dust and oil stain on the surface of the machine and empty the fuel tank.
6. If the machine has to be stored for a long time, empty the fuel in the tank, take out the batteries from the battery box, put the machine into a plastic bag and keep it in a cool and dry place.

TECHNICAL SPECIFICATIONS

Model	KK-TF-8625S
Outer Dimension (mm)	1050x300x335
Fuel Used	Petrol
Operation mode	Manual & electric
Net Weight (Kg)	9.7
Fuel Capacity (L)	1.2
Chemical Tank Capacity (L)	6
Consumption Capacity	2.0 L/H
Fogging Capacity	25 (L/H)
Battery	Dry battery 3V, Storage battery 6V 3.3Ah.