

Important: (1) Normal maintenance and adjustments to the product is the responsibility of the customer. (2) Normal wear and tear is not covered under warranty. (3) Rubber/plastic parts and consumables such as blades, clutch and clutch-bell, spark-plugs, nylon line, air-filters, fuel-filters, oil seals etc. are not covered under the warranty.

No Warranty On Electrical Motor / Electrical Parts / Battery Etc.

Incidental / Consequential Loss: KisanKraft Limited or its manufacturers will not be liable for general damages, including bodily injuries, or for incidental or consequential damages including, but not limited to, loss of use, loss of profits, loss of production, expense of substitute equipment or other commercial loss or damage.

Limitation of Liability: This limited warranty is in lieu of all other express warranties, obligations, or liabilities. Any implied warranties, obligations or liabilities, including, but not limited to, any implied warranty of merchantability shall be limited in duration to the applicable warranty period. Any action for breach of any warranty hereunder, including, but not limited to, any implied warranty of merchantability must be brought within the applicable warranty period.

Modifications of Warranty: No agent, representative, dealer, or employee of KisanKraft Limited or any of its manufacturers has the authority to increase or alter the obligations of this warranty.

Assignment / Transfer of warranty: The warranty cannot be assigned and shall not transfer if the product is resold by the first buyer. The above warranties are extended to the first end user (original purchaser), and no warranty is made, nor authorized to be made assignable on resale by the first end user.

What you must do to obtain limited warranty service: To obtain performance of any obligation under this warranty for failure during the applicable warranty period, deliver the defective product, to the nearest Authorized Dealer. KisanKraft Limited, its manufacturers and its dealers reserve the right to inspect the claimed defective part(s) to determine if the malfunction is the result of a defect covered by this warranty. Please note that the decision of KisanKraft Limited with respect to any warranty claim is final.

Receipt is required for availing warranty services

Jurisdiction: All disputes are subject to Bangalore court's jurisdiction.

Our Products	<ul style="list-style-type: none"> ◆Chainsaws◆Brush Cutters and Accessories◆Harvesters◆ ◆Engines and Water Pumps◆Hand Tools◆Garden Tools◆ ◆Cultivators and Accessories◆Sprayers and Accessories◆ ◆Transplanter and Post Hole Digger◆Milking Machines◆
---------------------	---

This warranty is null & void, if you fail to register the warranty with KisanKraft by sending the KisanKraft Copy with dealer's stamp.

KisanKraft Limited (formerly known as KisanKraft Machine Tools P Ltd)

🌐: www.kisankraft.com

✉: info@kisankraft.com

☎: +91.80.22178200

Product	THERMAL FOGGING SPRAYER	KisanKraft Invoice Date	
Brand	KisanKraft	KisanKraft Invoice No.	
Model	<input type="checkbox"/> KK-TF-8625P <input type="checkbox"/> KK-TF 8625S <input type="checkbox"/> KK-TF 8630	<input type="checkbox"/> KK-TF-8605(MINI) <input type="checkbox"/> KK-TF-8607(MINI)	
WARRANTY PERIOD	6 MONTHS	FOR THE SPECIFIED PERIOD FROM THE DATE OF SALE OR DELIVERY WHICHEVER IS EARLIER.	
Dealer's Invoice Date		Dealer's Invoice No.	
Buyer's Info (Name, Address, Phone, etc.):		Dealer's Stamp (Address, Phone, TIN, etc.):	
Buyer's Sign		Dealer's Sign	

What is covered: KisanKraft Limited and its manufacturers warrant this product to be free from defects in material or workmanship. All parts defective in material and workmanship are covered.

This warranty will only cover defects arising under normal usage.

This warranty is limited to repair or replacement by KisanKraft Limited or its manufacturers at the premises of Authorized Dealers, of such parts as appear to KisanKraft or its manufacturers, upon inspection, to be defective in material and/or workmanship. KisanKraft or its manufacturers make no warranty with respect to trade accessories not manufactured or sold by them.

What is not covered: The warranty shall become null and void and neither KisanKraft Limited nor any of its manufacturers, nor its authorized dealers assumes any responsibility, if the failure was caused by the following:

(1) Operation of product with incorrect fuel or lubricants, (2) Incorrect usage of machine or misuse, (3) Lack of maintenance, (4) Negligence, (5) Accident or physical damage, (6) Repairs made by unauthorized parties and/or with unauthorized parts, (7) Improper set up, adjustments, tampering or altered products

Note: The purchase is not contingent upon a product demonstration. The purchaser shall satisfy himself with the product, including any product demonstration or verification of any function, before buying. KisanKraft Limited or its authorized dealers, including online sellers, shall not be liable to give any on-site demonstration after purchase of any of the product.

This warranty is null & void, if you fail to register the warranty with KisanKraft by sending the KisanKraft Copy with dealer's stamp.

KisanKraft Limited (formerly known as KisanKraft Machine Tools P Ltd)

🌐: www.kisankraft.com

✉: info@kisankraft.com

☎: +91.80. 22178200

Important: (1) Normal maintenance and adjustments to the product is the responsibility of the customer. (2) Normal wear and tear is not covered under warranty (3) Rubber/plastic parts and consumables such as blades, clutch and clutch-bell, spark-plugs, nylon line, air-filters, fuel-filters, oil seals etc. are not covered under the warranty.

No Warranty On Electrical Motor / Electrical Parts / Battery Etc.

Incidental / Consequential Loss: KisanKraft Limited or its manufacturers will not be liable for general damages, including bodily injuries, or for incidental or consequential damages including, but not limited to, loss of use, loss of profits, loss of production, expense of substitute equipment or other commercial loss or damage.

Limitation of Liability: This limited warranty is in lieu of all other express warranties, obligations, or liabilities. Any implied warranties, obligations or liabilities, including, but not limited to, any implied warranty of merchantability shall be limited in duration to the applicable warranty period. Any action for breach of any warranties hereunder, including, but not limited to, any implied warranty of merchantability must be brought within the applicable warranty period.

Modifications of Warranty: No agent, representative, dealer, or employee of KisanKraft Limited or any of its manufacturers has the authority to increase or alter the obligations of this warranty.

Assignment / Transfer of warranty: The warranty cannot be assigned and shall not transfer if the product is resold by the first buyer. The above warranties are extended to the first end user (original purchaser), and no warranty is made, nor authorized to be made assignable on resale by the first end user.

What you must do to obtain limited warranty service: To obtain performance of any obligation under this warranty for failure during the applicable warranty period, deliver the defective product, to the nearest Authorized Dealer. KisanKraft Limited, its manufacturers and its dealers reserve the right to inspect the claimed defective part(s) to determine if the malfunction is the result of a defect covered by this warranty. Please note that the decision of KisanKraft Limited with respect to any warranty claim is final.

Receipt is required for availing warranty services

Jurisdiction: All disputes are subject to Bangalore court's jurisdiction.

Our Products	<ul style="list-style-type: none"> ◆Chainsaws◆Brush Cutters and Accessories◆Harvesters◆ ◆Engines and Water Pumps◆Hand Tools◆Garden Tools ◆ ◆Cultivators and Accessories◆Sprayers and Accessories◆ ◆Transplanter and Post Hole Digger ◆Milking Machines ◆
---------------------	--

This warranty is null & void, if you fail to register the warranty with KisanKraft by sending the KisanKraft Copy with dealer's stamp.

KisanKraft Limited (formerly known as KisanKraft Machine Tools P Ltd)

🌐: www.kisankraft.com ✉: info@kisankraft.com ☎: +91.80. 22178200

Product	THERMAL FOGGING SPRAYER	KisanKraft Invoice Date	
Brand	KisanKraft	KisanKraft Invoice No.	
Model	<input type="checkbox"/> KK-TF-8625P <input type="checkbox"/> KK-TF 8625S <input type="checkbox"/> KK-TF 8630	<input type="checkbox"/> KK-TF-8605(MINI) <input type="checkbox"/> KK-TF-8607(MINI)	
WARRANTY PERIOD	6 MONTHS	FOR THE SPECIFIED PERIOD FROM THE DATE OF SALE OR DELIVERY WHICHEVER IS EARLIER.	
Dealer's Invoice Date		Dealer's Invoice No.	
Buyer's Info (Name, Address, Phone, etc.):		Dealer's Stamp (Address, Phone, TIN, etc.):	
Buyer's Sign		Dealer's Sign	

What is covered: KisanKraft Limited and its manufacturers warrant this product to be free from defects in material or workmanship. All parts defective in material and workmanship are covered.

This warranty will only cover defects arising under normal usage.

This warranty is limited to repair or replacement by KisanKraft Limited or its manufacturers at the premises of Authorized Dealers, of such parts as appear to KisanKraft or its manufacturers, upon inspection, to be defective in material and/or workmanship. KisanKraft or its manufacturers make no warranty with respect to trade accessories not manufactured or sold by them.

What is not covered: The warranty shall become null and void and neither KisanKraft Limited nor any of its manufacturers, nor its authorized dealers assumes any responsibility, if the failure was caused by the following:

- (1) Operation of product with incorrect fuel or lubricants,
- (2) Incorrect usage of machine or misuse,
- (3) Lack of maintenance,
- (4) Negligence,
- (5) Accident or physical damage,
- (6) Repairs made by unauthorized parties and/or with unauthorized parts,
- (7) Improper set up, adjustments, tampering or altered products

Note: The purchase is not contingent upon a product demonstration. The purchaser shall satisfy himself with the product, including any product demonstration or verification of any function, before buying. KisanKraft Limited or its authorized dealers, including online sellers, shall not be liable to give any on-site demonstration after purchase of any of the product.

This warranty is null & void, if you fail to register the warranty with KisanKraft by sending the KisanKraft Copy with dealer's stamp.

KisanKraft Limited (formerly known as KisanKraft Machine Tools P Ltd)

🌐: www.kisankraft.com ✉: info@kisankraft.com ☎: +91.80. 22178200



Wide Range of Products for Every Need



For more information give **MISSED CALL: 07676065555**



Many of our products have BIS: ISI certification.



User Manual

<p>KK-TF-8625P KK-TF-8625S</p>		
<p>KK-TF-8630</p>		
<p>KK-TF-8605(MINI)</p>		<p>KK-TF-8607(MINI)</p>

KisanKraft Limited

(Formerly known as KisanKraft Machine Tools Pvt. Ltd)

Sri Huchhanna Tower, #4, 1st Main, 7-A Cross, Maruthi Layout, Dasarahalli, HAF Post, Hebbal, Bangalore 560024, Karnataka, INDIA

- ◆ Bangalore (HO) ◆ Ahmedabad ◆ Bhopal ◆ Bhubaneswar ◆ Coimbatore ◆
- ◆ Jammu ◆ Guwahati ◆ Shimla ◆ Hubli ◆ Hyderabad ◆
- ◆ Jaipur ◆ Karnal ◆ Kolkata ◆ Lucknow ◆ Pune ◆ Raipur ◆

KisanKraft has a large range of products to serve the farmers. A list of our products is given below:

<p>Brush Cutters and Accessories</p> <ul style="list-style-type: none"> Brush Cutter/Power Weeder Backpack Brush Cutter Tea Pruner Pole pruner with Engine Reaper Attachment Blades-Circular Blades (2 & 3 points) Baffle Nylon Rope Tap & Go <p>Chainsaws</p> <ul style="list-style-type: none"> Petrol Chainsaw Electric Chainsaw Chain Sharpening Machine <p>Engines and Water Pumps</p> <ul style="list-style-type: none"> Engine –Diesel-(Horizontal) Engine –Diesel(Vertical) Engine-Kerosene Water Pump with Petrol Engine Water Pump with Kerosene Engine Water Pump with Diesel Engine <p>Hand Tools</p> <ul style="list-style-type: none"> Secateurs Folding Saw Garden Rake Garden Shovel Hedge Shear Lopper Telescopic Hedge Shear Telescopic Lopping Shear Tree Pruner Telescopic Steel Pipe & Fruit Picker Bag Sheep Shear <p>Garden Tools</p> <ul style="list-style-type: none"> Electric Pressure Washer Hedge Trimmer Lawn Mower (Electric, Petrol & Manual) Leaf Blower 	<p>Cultivators and Accessories</p> <ul style="list-style-type: none"> Petrol and Diesel <p>Sprayers and Accessories</p> <ul style="list-style-type: none"> Battery Sprayer Portable Power Sprayer Trolley Sprayer Manual Knapsack Sprayer Manual Pressure Sprayer Rose Cans Hose Crimping Machine HTP Sprayer HTP Delivery Hose HTP Hose Reel HTP Stand HTP Gun / Lance(Brass Rod) Knapsack Power Sprayer Mister / Duster / Granuel Spreader HTP Sprayer Set with Diesel Engine HTP Sprayer Set with Kerosene Engine Fogging Machine <p>Milking Machine</p> <ul style="list-style-type: none"> Wood Shredder Fodder Ensiling Chaff Cutter Fodder Grinder Chaff Cutter Fodder Mini Chaff Cutter <p>Harvester</p> <ul style="list-style-type: none"> Maize Sheller Maize Sheller + Dehusker Maize Combine Harvester Onion Digger Carlotti Italy Tea Leaf Harvester Sugarcane Combine Harvester Sugarcane Leaf Stripper <p>Transplanter and Post Hole Digger</p> <ul style="list-style-type: none"> Paddy Transplanter (2 & 8 Rows) Transplanter-Vegetable & Tobacco Post Hole Digger(4" to 14" Augers)
--	---

PARTS LIST-KK-TF-8607 (MINI)

Part No	Part Name	Part No	Part Name
1.	Right cover	31.	Bolt pan head M 2.5 X8 W/P/S washer
2.	Left cover	32.	
3.	Cross recessed pan head screws M4X14	33.	
4.	Strap hook	34.	Pipe 5.5 x3 x2 30
5.	Nut M4	35.	Chemical Tank Pipe Grommet
6.	Strap group	36.	Chemical Tank
7.	Sprinkler head	37.	Chemical Tank Cap
8.	Oil so that the head	38.	Gasket Chemical Tank
9.	Nozzle joints	39.	Handle
10.	Spout	40.	Left Rod
11.	φ4 stainless steel ball	41.	Right Rod
12.	Seat	42.	Trachea
13.	Oil so that the head φ 4(Small)	43.	Valve body
14.	Nozzle joints(Small)	44.	Stem
15.	Water out tube	45.	Nut for stem
16.	The burner assembly	46.	O-ring φ4 x1 .8
17.	Magnetic needle fixing plate	47.	Locking cover
18.	Burner Nut	48.	Holder
19.	Gas nozzle	49.	Cross recessed pan head screws M2X14
20.	Porcelain needle assembly	50.	Gasket Fuel Tank
21.	Ignition	51.	Fuel Tank
22.	Shroud assembly	52.	Suction drug possession
23.	Cross recessed tapping screws ST4.2x8	53.	Push tube
24.	Liquid body Assy	54.	Flat washer 3
25.		55.	Return spring
26.	O-ring φ 3 x1 .8	56.	Sealing ring
27.	Liquid stem	57.	Piston
28.	O-ring φ 8 x1 .8	58.	φ9.52 stainless steel ball
29.	Nut (Liquid Stem)	59.	Bottom valve
30.	knob	60.	Into drug pipe φ8.2Xφ5.2X110

CONTENTS

BEFORE GETTING STARTED 8

APPLICATION AND FEATURES 8

SAFETY INSTRUCTIONS 8

OVERVIEW 9

OPERATION-(KK-TF-8625P /8625S / 8630) 11

OPERATION-KK-TF-8605(MINI)..... 13

OPERATION-KK-TF-8607(MINI)..... 14

MAINTENANCE 18

TECHNICAL SPECIFICATIONS..... 19

TROUBLE SHOOTING (KK-TF-8625P / 8625S / 8630) 20

PARTS DIAGRAM KK-TF-8625P/8625S 22

PARTS LIST-KK-TF-8625P/8625S 23

PARTS DIAGRAM KK-TF-8630 25

PARTS LIST-KK-TF-8630 26

PARTS DIAGRAM KK-TF-8605(MINI) 28

PARTS LIST-KK-TF-8605 (MINI) 29

PARTS DIAGRAM KK-TF-8607(MINI) 31

PARTS LIST-KK-TF-8607 (MINI) 32

Product	THERMAL FOGGING SPRAYER	KisanKraft Invoice Date	
Brand	KisanKraft	KisanKraft Invoice No.	
Model	<input type="checkbox"/> KK-TF-8625P <input type="checkbox"/> KK-TF 8625S <input type="checkbox"/> KK-TF 8630	<input type="checkbox"/> KK-TF-8605(MINI) <input type="checkbox"/> KK-TF-8607(MINI)	
WARRANTY PERIOD	6 MONTHS	FOR THE SPECIFIED PERIOD FROM THE DATE OF SALE OR DELIVERY WHICHEVER IS EARLIER.	
Dealer's Invoice Date		Dealer's Invoice No.	
Buyer's Info (Name, Address, Phone, etc.):		Dealer's Stamp (Address, Phone, TIN, etc.):	
Buyer's Sign		Dealer's Sign	

What is covered: KisanKraft Limited and its manufacturers warrant this product to be free from defects in material or workmanship. All parts defective in material and workmanship are covered.

This warranty will only cover defects arising under normal usage.

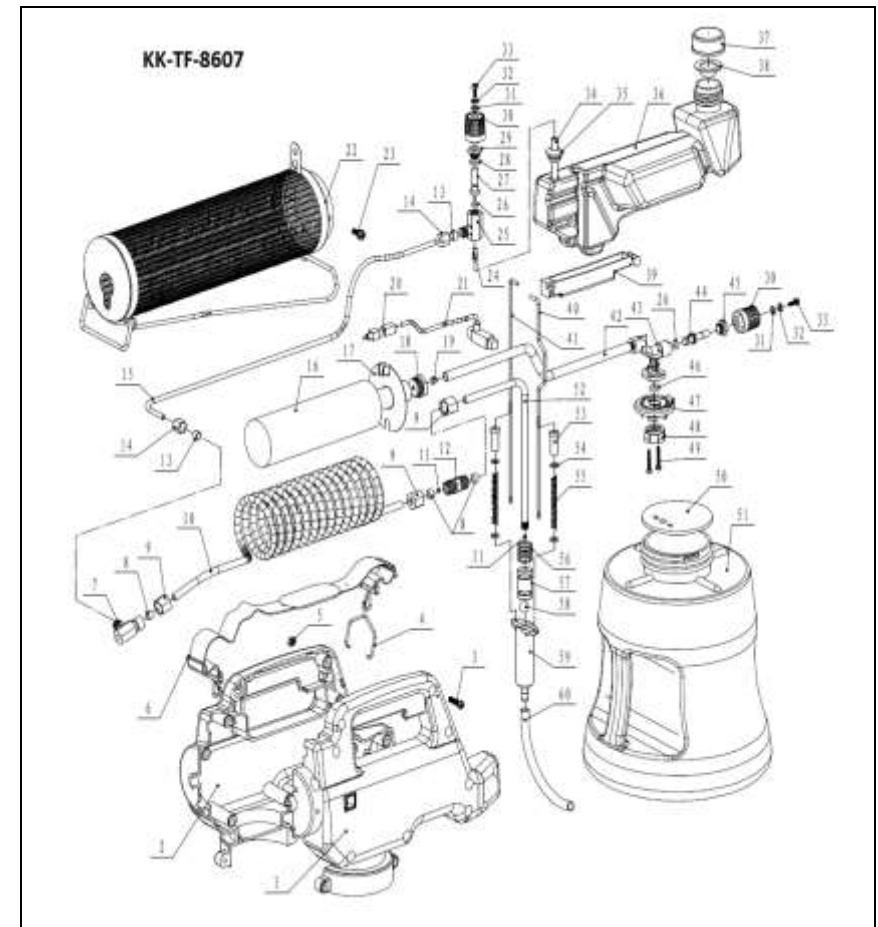
This warranty is limited to repair or replacement by KisanKraft Limited or its manufacturers at the premises of Authorized Dealers, of such parts as appear to KisanKraft or its manufacturers, upon inspection, to be defective in material and/or workmanship. KisanKraft or its manufacturers make no warranty with respect to trade accessories not manufactured or sold by them.

What is not covered: The warranty shall become null and void and neither KisanKraft Limited nor any of its manufacturers, nor its authorized dealers assumes any responsibility, if the failure was caused by the following:

- (1) Operation of product with incorrect fuel or lubricants,
- (2) Incorrect usage of machine or misuse,
- (3) Lack of maintenance,
- (4) Negligence,
- (5) Accident or physical damage,
- (6) Repairs made by unauthorized parties and/or with unauthorized parts,
- (7) Improper set up, adjustments, tampering or altered products.

Note: The purchase is not contingent upon a product demonstration. The purchaser shall satisfy himself with the product, including any product demonstration or verification of any function, before buying. KisanKraft Limited or its authorized dealers, including online sellers, shall not be liable to give any on-site demonstration after purchase of any of the product.

PARTS DIAGRAM KK-TF-8607(MINI)



This warranty is null & void, if you fail to register the warranty with KisanKraft by sending the KisanKraft Copy with dealer's stamp.

KisanKraft Limited (formerly known as KisanKraft Machine Tools P Ltd)

Part No	Part Name	Part No	Part Name
23	Gas nozzle	57	Commutation knob
24	Connecting pipe φ6x1	58	Hexagon socket set screws M4
25	Platen	59	Suction drug possession
26	Head tapping screws ST2.9X12	60	Medicine cabinet gasket
27	Trachea φ8x1.5	61	Push tube
28	Copper skin 6x155x0.2	62	Return spring
29	Ignition	63	Flat washer 3
30	Handle	64	Sealing ring
31	Valve	65	Piston
32	Cross recessed pan head tapping screws ST2.9	66	Bottom valve
33	Plug	67	φ9.52 stainless steel ball
34	O-ring outer φ14x2.4	68	Into drug pipe φ8.2Xφ5.2X8

Important: (1) Normal maintenance and adjustments to the product is the responsibility of the customer. (2) Normal wear and tear is not covered under warranty.(3) Rubber/plastic parts and consumables such as blades, clutch and clutch-bell, spark-plugs, nylon line, air-filters, fuel-filters, oil seals etc. are not covered under the warranty.

No Warranty On Electrical Motor / Electrical Parts / Battery Etc.

Incidental / Consequential Loss: KisanKraft Limited or its manufacturers will not be liable for general damages, including bodily injuries, or for incidental or consequential damages including, but not limited to, loss of use, loss of profits, loss of production, expense of substitute equipment or other commercial loss or damage.

Limitation of Liability: This limited warranty is in lieu of all other express warranties, obligations, or liabilities. Any implied warranties, obligations or liabilities, including, but not limited to, any implied warranty of merchantability shall be limited in duration to the applicable warranty period. Any action for breach of any warranty hereunder, including, but not limited to, any implied warranty of merchantability must be brought within the applicable warranty period.

Modifications of Warranty: No agent, representative, dealer, or employee of KisanKraft Limited or any of its manufacturers has the authority to increase or alter the obligations of this warranty.

Assignment / Transfer of warranty: The warranty cannot be assigned and shall not transfer if the product is resold by the first buyer. The above warranties are extended to the first end user (original purchaser), and no warranty is made, nor authorized to be made assignable on resale by the first end user.

What you must do to obtain limited warranty service: To obtain performance of any obligation under this warranty for failure during the applicable warranty period, deliver the defective product, to the nearest Authorized Dealer. KisanKraft Limited, its manufacturers and its dealers reserve the right to inspect the claimed defective part(s) to determine if the malfunction is the result of a defect covered by this warranty. Please note that the decision of KisanKraft Limited with respect to any warranty claim is final.

Receipt is required for availing warranty services

Jurisdiction: All disputes are subject to Bangalore court's jurisdiction.

Our Products	<ul style="list-style-type: none"> ◆Chainsaws◆Brush Cutters and Accessories◆Harvesters◆ ◆Engines and Water Pumps◆Hand Tools◆Garden Tools ◆ ◆Cultivators and Accessories◆Sprayers and Accessories◆ ◆Transplanter and Post Hole Digger ◆Milking Machines ◆
---------------------	--

This warranty is null & void, if you fail to register the warranty with KisanKraft by sending the KisanKraft Copy with dealer's stamp.

KisanKraft Limited (formerly known as KisanKraft Machine Tools P Ltd)

BEFORE GETTING STARTED

Thank you for your purchase and use of our products. In order to avoid accidents or injury, **please read this manual carefully** before using the machine. After reading, preserve it for further reference.

APPLICATION AND FEATURES

1. The right machine for agricultural and forestry insect control and for the prevention of epidemic disease.
2. Simplified design for easy operation and maintenance
3. Light in weight and balanced.
4. Strong power burst, long spray range, high work efficiency.
5. Stainless Steel Body to prevent corrosion. (KK-TF-8625S).

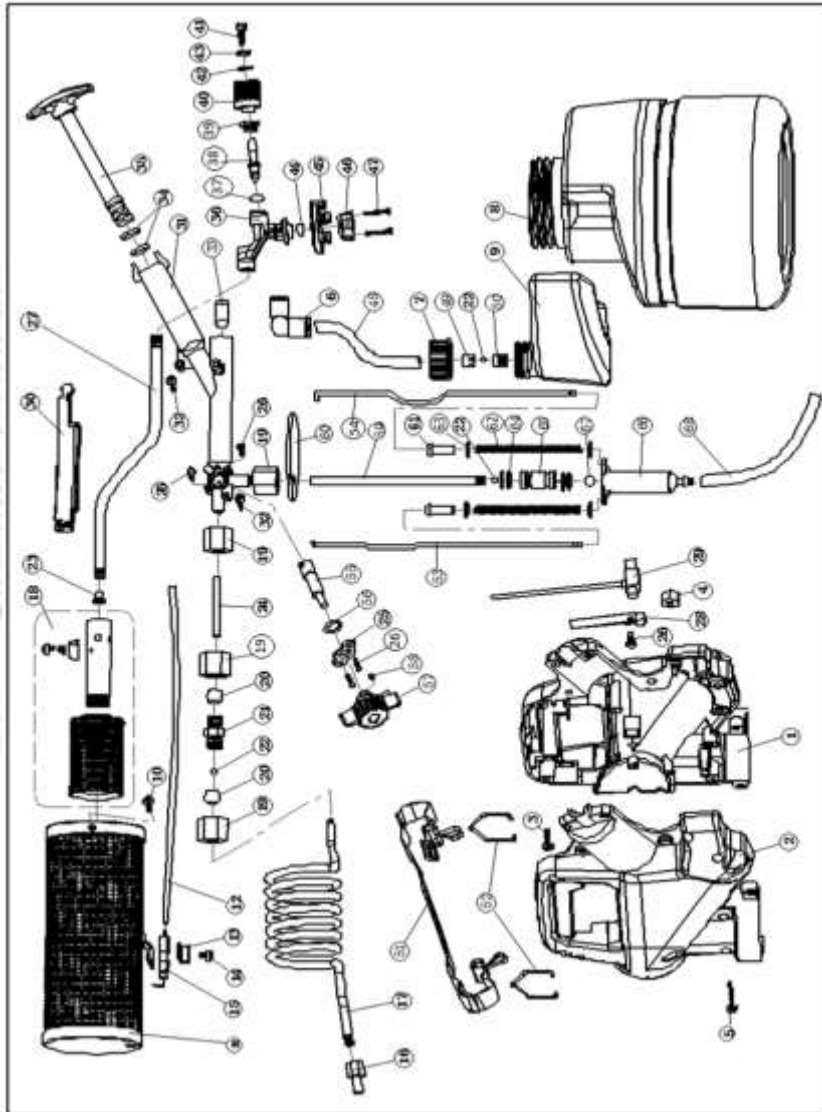
SAFETY INSTRUCTIONS

1. During the use and handling of chemicals, the operator must comply with the safety operation instructions provided by the chemical manufacturer to avoid damage to the human being and the environment.
2. Always wear protection suit when handling chemicals.
3. Maintenance and replenishment of chemicals should be done only when the fogger machine is in cool state.
4. Do not enter into the room directly that has been sprayed with chemicals.
5. Check the fogger before each operation.
6. Do not lay the fogger on its side.
7. Do not operate or refuel the machine near the fire.
8. Fogger should not be operated close to any person (a radius of 3 meters).
9. Do not touch the fogger body while it is still hot.
10. It is advisable to check and maintain the battery at regular intervals.(KK TF-8625S/KK TF-8630)
11. **To avoid burning of hand or clothes, while the engine is running, do not touch the cooling pipe or the end part of the combustion chamber.** .(KK TF-8625S/KK TF-8630)
12. When fogging, do not point the machine too closely to the plant or other objects. Do not let the cooling pipe touch the objects that are flammable. It is better to keep a distance of 2 meters. Do not do fogging in flammable locations.
13. Do not use wood pulp or wood sticks or other flammable objects to put into the combustion chamber because it may cause bursting of sparks resulting in burns to the people around it /and or even can cause a fire. .(KK TF-8625S/KK TF-8630)
14. The temperature in the chamber could reach up to 1000°C during operation, make sure the spray volume should be at higher levels to help cool down the temperature in the chamber, as low spray volume does not help to resist the high temperature from increasing making the stainless steel melt under 1500°C .(KK TF-8625S/KK TF-8630)

PARTS LIST-KK-TF-8605 (MINI)

Part No	Part Name	Part No	Part Name
1	Right cover	35	Piston rod
2	Left cover	36	Valve body
3	Cross recessed pan head screws M4X10	37	O-ring φ3x1.8 is
4	Hex head nut M4	38	Stem
5	Cross recessed pan head screws M4X14	39	Pressed cap
6	90 degree bend section header	40	Knob
7	Capsule /Cap (Cleaning bottle)	41	Cross recessed pan head screws M2.5X8
8	Medicine chest	42	Spring washer 2.5
9	Cleaning bottles	43	Flat washer 2.5
10	Cross recessed tapping screws ST4.2x12	44	O-ring φ4x1.8 is
11	Shroud assembly/Guard Assy	45	Locking cover
12	Insulating tube φ4x180 is	46	Holder
13	Porcelain pin platen/Bracket	47	Cross recessed pan head screws M2X14
14	The cross slot bulk of screw M4	48	Cleaning tube φ8.2xφ5.2x180
15	Porcelain needle assembly	49	Cleaning tube gear Block
16	Sprinkler head	50	Cleaning tube seat
17	Spout/nozzle	51	Strap group
18	The burner assembly	52	Strap hook
19	Nozzle joints	53	Right Rod
20	Oil so that the head/Ferrule	54	Left Rod
21	Seat/Coupling	55	Spool
22	φ4 stainless steel ball	56	O-ring outer φ13.5x1.9

PARTS DIAGRAM KK-TF-8605(MINI)

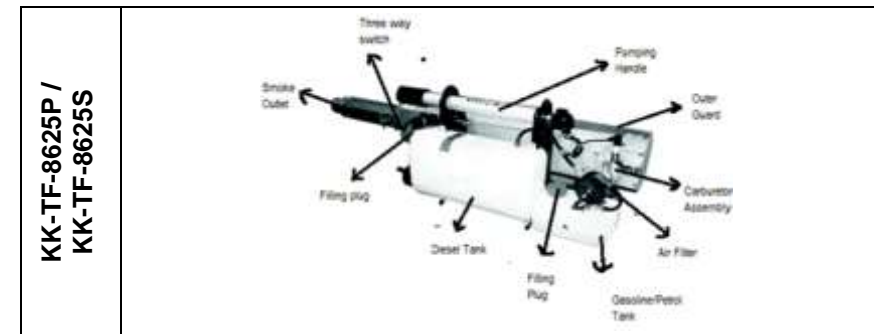


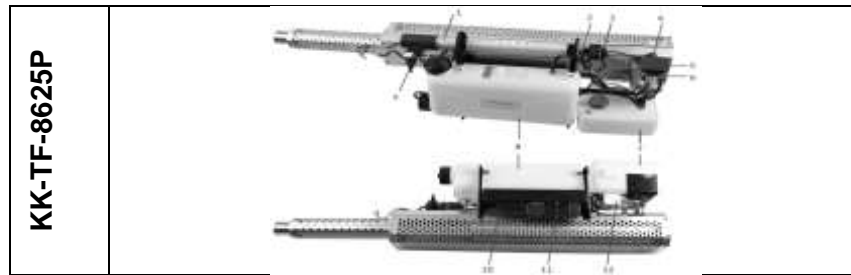
⚠ Never refuel while the engine is ON. When refueling is needed, turn off the engine first and then wait for about 15-20 minutes for the engine to cool down. If the engine is still hot, fuel spills could result in a fire. It is recommended to fill chemical first before filling the fuel and not to keep the engine idle without fogging.

Warning signs

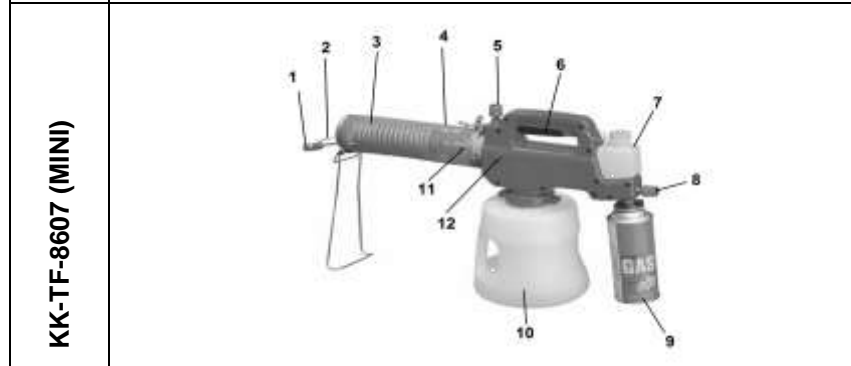
	Read the manual		Use a mask
	Wear protective clothing		Use gloves
	Wash after work		Caution! Risk of burning
	Safety warnings		Caution! Risk of fire

OVERVIEW





1. Manual air pump 2. Electric start button 3. Pressure switch 4. Spark plug 5. Air filter
 6. Carburetor 7. Fuel tank 8. Chemical tank 9. Chemical cock 10. Dry battery
 11. Storage battery 12. Electric air pump



1. Chemical tank 2. Smoke screen pump lever 3. Coil for smoke screen
 4. Fuel (diesel) tank 5. Liquefied Butane gas 6. Gas control knob.

SI No.	Description	SI No.	Description
28.	Washer \varnothing 6	56.	Pressure Switch
57.	Button Switch	88.	Three Way Connector
58.	Screw M4x10	89.	Pipe, Fuel Inlet
59.	Spring Washer \varnothing 4	90.	Grommet
60.	Nut M4	91.	Fuel Filter
61.	Electric Air Pump	92.	Air Pipe
62.	Fuel Tank Board	93.	Two-Way Valve
63.	Flexible Hose	94.	Nut M5
64.	One Way Valve (Big To Small)	95.	Flexible Hose
65.	Flexible Hose	96.	Flexible Hose
66.	Circuits Cover	97.	Three Way Connector
67.	Air Filter Cover	98.	Flexible Hose
68.	Air Filter Element	99.	Connector Screw
69.	Screw M5x40	100.	Two Way Connector
70.	Air Filter Base	101.	Chemical Outlet Connector
71.	Carburetor	102.	Gasket
72.	Gasket	103.	Air Intake Nut
73.	Carburetor Connector	104.	Gasket
74.	Hose Fitting	105.	Splice Nut
75.	Flexible Hose	106.	Flexible Hose
76.	O-RING \varnothing 50x2.4	107.	Chemical Filter Assy
77.	Guide Column	108.	Air Intake Connector
78.	Suction Board	109.	Tank Lid
79.	Diaphragm	110.	Tank Lid Gasket
80.	Washer	111.	Drain Cap
81.	Suction Back Board	112.	Splice Nut
82.	Screw M6x12	113.	O-RING \varnothing 17x2.65
83.	O-RING \varnothing 50x2.65	114.	O-RING \varnothing 20x3.1
84.	Carburetor Base	115.	Drain Connector
85.	Carburetor Gasket	116.	Chemical Tank
86.	Flexible Hose	117.	Fuel Tank
87.	One Way Valve (Small To Big)	118.	Fixer

PARTS LIST-KK-TF-8630

SI No.	Description	SI No.	Description
1.	Outer Wire Guard	29.	Bolt M6x12
2.	Screw	30.	Spring Washer
3.	Front Wire Guard Assy	31.	Nut M6
4.	Front Holder, Outer Wire Guard	32.	Fixing Plate
5.	Air Duct	33.	Bolt M6x20
6.	Air Duct Cover	34.	Outer Wire Fix
7.	Spark Plug Cap	35.	Carrying Strap
8.	Spark Plug	36.	Manual Air Pump Assy.
9.	Back Plate	37.	Cable Clip
10.	Back Holder, Outer Wire Guard	38.	Left Support
11.	Combustion Chamber	39.	Holder, Manual Air Pump
12.	Nozzle Core	40.	Screw M5x16
13.	Metal Rod	41.	Dust-Proof Cover
14.	Brass Gasket	42.	Battery 1.5v
15.	Nozzle Body	43.	Battery Holder
16.	Brass Gasket	44.	Ignition Coil
17.	Chemical Discharge Tube	45.	Relay Assy
18.	Chemical Discharge Cover	46.	Washer ϕ 4
19.	Flexible Hose	47.	Screw M4x16
20.	Hose Clamp ϕ 9	48.	Plate
21.	Three Way Chemical Cock	49.	Charging Socket
22.	Flexible Hose	50.	Cable Clip
23.	Screw M5x12	51.	Sponge Gasket
24.	Washer ϕ 5	52.	Storage Battery
25.	Nut M5	53.	Battery Guard
26.	Fixing Plate	54.	Right Support
27.	Air Discharge	55.	Gasket

OPERATION-(KK-TF-8625P / 8625S / 8630)

Preparation

1. Check and make sure all the electrical circuits and pipe connections are in good status.
2. Put the batteries into the battery box.
3. Pull the air pump handle and pump until the pressure is formed and the spark plug gives ignition noise.
4. Then fill with gasoline in the fuel tank and fill in chemical and smoke solvent into the chemical tank. Make sure the tank lids are tightly sealed.



How to start the engine: (KK-TF-8625P / 8625S)

For both manual and electric types, the starting operations are as follows:

- a) First adjust the fuel valve to 2~3 position.
- b) Pump 4 to 5 times until you observe the gasoline coming from the fuel pipe and up to the carburetor place.
- c) Close the fuel valve, continue pumping in order to evaporate the excessive gasoline facilitating the startup (Note that in this drying process, there will be pop voice coming from the combustion chamber. Stop pumping when you hear the crisp sound).
- d) Then adjust the fuel valve to 4~5 position.
- e) Pump evenly, when you hear the pop voice, continue pumping until the engine runs continuously, then return the pump handle to its initial position.
- f) Adjust the fuel valve to maximum as needed, when you hear the stable and crisp sound which means the working is normal.



(If failed to start, repeat procedures from c to f).

For the **electric** type, with an electric air pump, the starting operations can be as follows:

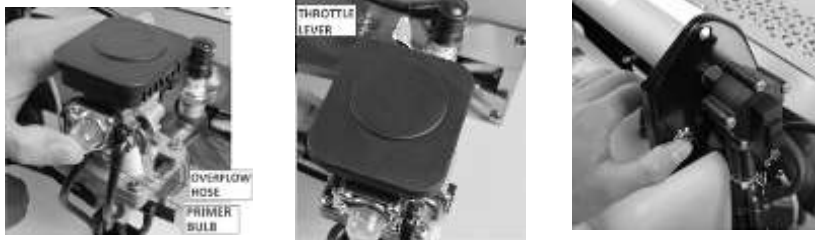
- a) First adjust the fuel valve to 4 ~ 5 position.
- b) Press the electric start button until the fogger gets started.

(If failed to start, because of too much cold gasoline in the carburetor, turn off the fuel valve and press the start button for 10 seconds, then repeat the above procedures to start).

How to start (KK-TF-8630):

(I) Electric Starting:

- Firstly press the primer bulb several times until the observation of petrol coming inside and flowing to the carburetor base from the overflow hose.
- Adjust the throttle valve to "ON" direction to the 3/4 position.
- Press the start button and keep for several seconds. During this time, according to the state of engine sound, the throttle lever can be adjusted until you can hear crisp and stable sound. Release the button after successfully started and adjust the throttle valve fully opened.
- After running for 20 seconds (should not be more than 60 seconds to avoid machine damage because of heat), open the chemical cock to "ON" position and start to spray.

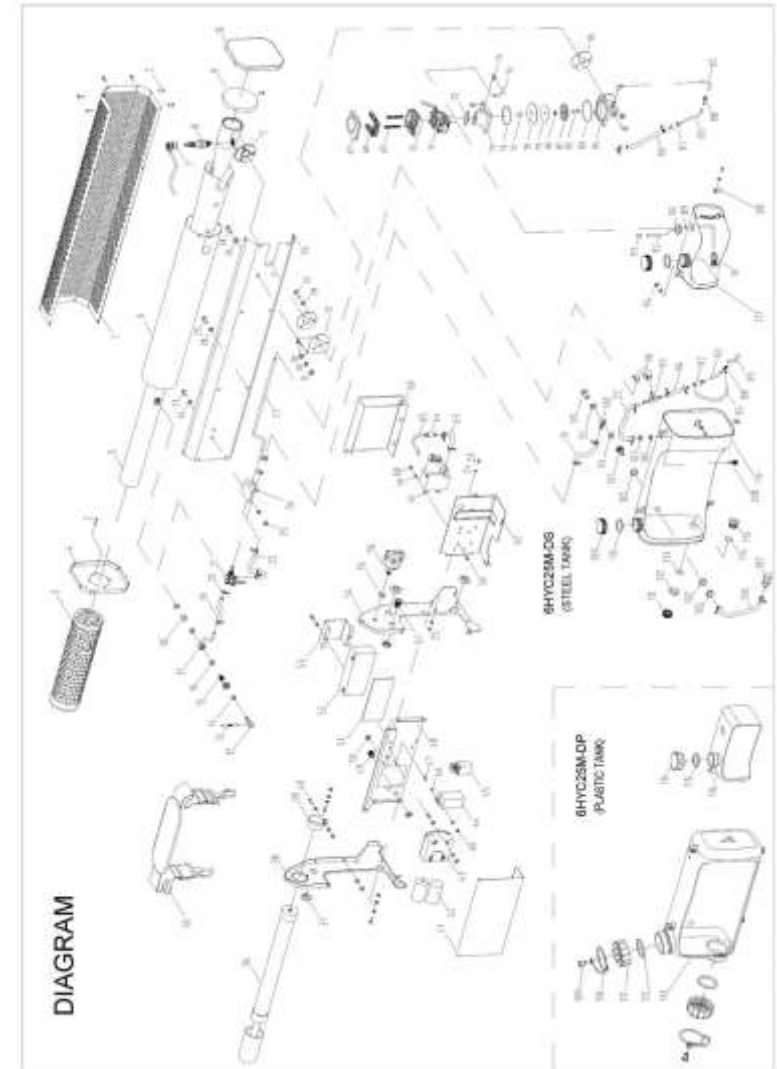


(II) Manual Starting:

- a), b) same as above in (I).
- Pull the pump handle and pump evenly (one back and forth motion takes about 1 second), when you hear the pop voice, continue pumping until the engine runs continuously (if after repeated times still not activated, you can adjust the throttle valve slightly while pumping), then return the pump handle to its initial position. Adjust the throttle valve fully opened.
- d) Same as above in (I).



PARTS DIAGRAM KK-TF-8630



No.	Description	No.	Description	No.	Description
28	Carburetor body	67	Chemical tank clip	107	Chemical discharge tube
29	O-ring	68	Chemical tank gasket	108	Nozzle body
30	Lock nut	69	Chemical tank	109	Brass gasket
31	Valve board	70	Chemical tank intake connector	110	Nozzle core
32	Diaphragm	71	Chemical tank intake nut	111	Metal rod
33	Valve board cover	72	Screw	112	Carrying strap
34	Air cleaner element	73	Gasket	113	Strap pad
34-1	Muffler case	74	Nut	114	Strap adjuster
35	Air connector	75	Screw	115	Strap hook
36	Air bend connector	76	Ignition coil		
37	Tube clamp	77	Battery		
38	Flexible hose	78	Battery holder		
39	Gasket	79	Left support		

ADDITIONAL PARTS LIST

No.	Description	No.	Description	No.	Description
120	Bolt	129	Flexible hose	138	Plug pin
121	Washer	130	Pump connector	139	Charging socket
122	Nut	131	Bolt	140	Insulation tube
123	Holder, electric air pump	132	Battery guard	141	Jacket
124	Washer	133	Storage battery	142	Plug pin
125	Bolt	134	Sponge gasket	143	Button switch
126	Electric air pump	135	Insulation tube	144	Wire
127	Flexible hose	136	Wire	145	Terminal connector
128	One-way valve	137	Jacket	146	Relay

How to Fog: (KK-TF-8630):

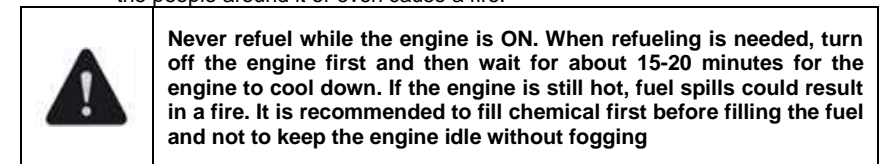
1. **Once the engine starts running and becomes stable, immediately fogging must be done, do not let the engine idle for more than 1 minute without fogging.**
2. Carry the machine on your shoulder and grasp the handle tightly.
3. Open the chemical cock into the position "OPEN" slowly. A few seconds later carburetion will be started. Adjust discharge fluid as needed.
4. Wherever possible, adjust the machine to work horizontally. While tilting spray is needed, do not tilt the machine too much. The too big tilting angle will cause the fuel filter coming out of the fuel and thus causing engine to stop.
5. If fogging needs to be stopped for a while move the chemical cock to position "DISCHARGE" and when spray again, turn the cock to position "OPEN" for continuing.
6. **After the fogging is done or the chemical tank is empty, let the engine to rest for 10-15 minutes or cool down first before refilling the chemical.**

How to STOP the machine: (KK-TF-8630):

To stop fogging, make sure to turn the chemical cock to position "DISCHARGE" firstly so that the remaining chemical in the hose can be the fuel cock to stop the engine. And lastly, turn the chemical cock to the position "CLOSE" or "OFF"

Safe Use of the Fogger

1. To avoid burning of hand or clothes, while the engine is running, do not touch the cooling pipe or the end part of the combustion chamber.
2. When fogging, do not point the machine too closely to the plant or other objects. Do not let the cooling pipe touches objects that are flammable. It is better to keep a distance of 2 meters. Do not do fogging in flammable locations.
3. Do not use wood pulp or wood sticks or other flammable objects to put into combustion chamber because it makes burst of sparks that can cause burns to the people around it or even cause a fire.



OPERATION-KK-TF-8605(MINI)

1. Fill the chemical tank-① with 2L diesel and 30-50cc pesticide and then dilute them.
2. Fill the coil-cooling water tank -② with water and fix the liquefied butane gas -④ onto the screen smoke gadget.
3. Check the coil for smoke screen-⑨ which is available (coil-clogging) by turning the smoke screen & cooling control lever-⑧ at the cooling position and then operating the cooling water pump③.

4. After opening the gas control lever-⑤, checking its gas ignition and pushing the ignition switch-⑥ for its ignition, turn the Smoke screen & cooling control lever-⑧ at the smoke screen position and then clench and unclench the smoke screen pump lever-⑦ with hand continuously. After that, the smoke screen is activated. (The coil will be clogged if you are not operating the smoke screen pump lever and you leave it in the condition of the ignition.)
5. After finishing the smoke screen work, turn the Smoke screen & cooling control lever-⑧ at the cooling position and close the gas control lever-⑤ immediately. While the heat still remains on the coil for smoking screen-⑨, you should operate the cooling water pump-③ to clean the coil for smoking screen-⑨ that prevent the coil from being clogged and guarantee its long-term use.

OPERATION-KK-TF-8607(MINI)

Note:

- a) This product has separated chemical tank and diesel tank. Do not put other materials into diesel tank. Agricultural chemicals, pesticides and disinfectants should be put into the chemical tank only.
The coil would be clogged if chemicals are mixed in the diesel tank according to the usual method.
- b) When mixing the chemical in the chemical tank, please read the instructions about the mixing ratio of the chemical on the chemical container. Overuse of chemicals may cause dizziness, headache and vomiting.
- c) Chemicals must be in liquid form. (Powder or solid chemicals are not allowed to use)
- d) After work, continue to push the pump handle at least 5 ~ 6 times to spray out the undiluted chemical before disassembling the diesel tank.
- e) Please be sure of ventilation when working in confined spaces.
- f) Inhalation of combusted gas from the combustion section might cause dizziness, headache and vomiting, so please keep away from the combustion section in the protection shield during work.
- g) Excess concentration of chemicals might kill plants. Proper mixture proportion must be complied with.
- h) Spray to plant or object away from about 1.5 meters.

Operating Procedure :(KK-TF-8607(MINI)

Diesel tank:

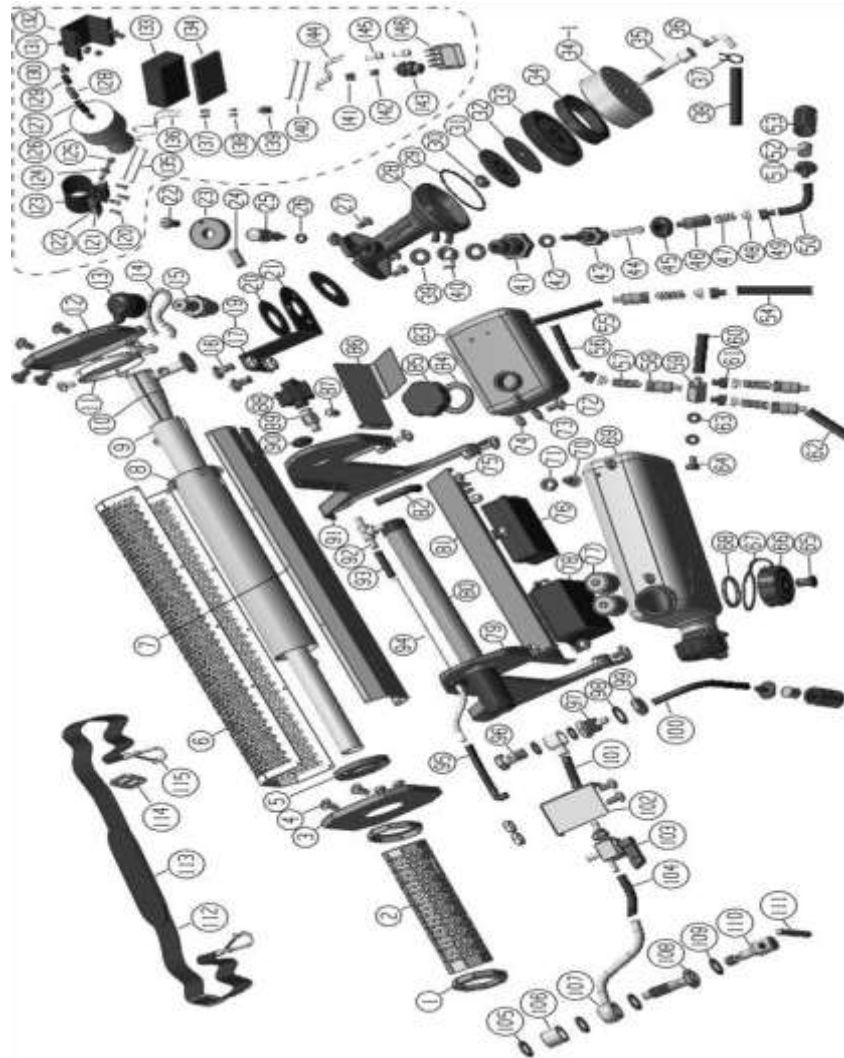
1. Put diesel into diesel tank for fogging
2. Except diesel, do not put other liquids into the diesel tank.
3. Suggested working ways.
 Outdoor: Fog - Diesel tank (diesel)
 -Chemical tank (diesel + chemical)



PARTS LIST-KK-TF-8625P/8625S

No.	Description	No.	Description	No.	Description
1	Holder, front wire guard	40	Double connector	80	Manual air pump assy.
2	Front wire guard	41	Throttle valve bracket	81	Engine board
3	Front holder, outer wire guard	42	Gasket	82	Flexible hose
4	Screw	43	Throttle valve	83	Fuel tank
5	Guide holder	44	Transparent hose	84	Rubber gasket
6	Outer wire guard	45	Fuel hose plug	85	Fuel tank lid
7	Outer wire fix holder	46	Fuel hose connector	86	Fuel tank board
8	Air duct cover	47	Spring	87	Air exhaust connector
9	Air duct, long	48	Valve plate	88	Pressure switch
10	Combustion chamber	49	Fuel hose connector	89	Pump connector
11	Back plate	50	Flexible hose	90	Cable plug
12	Back holder, outer wire guard	51	Strainer connector	91	Right support
13	Spark plug cap	52	Brass rod	92	Three way connector
14	Burner tube	53	Strainer	93	Flexible hose
15	Spark plug	54	Flexible hose	94	Chemical discharge hose
16	Hexagonal bolt	55	Flexible hose	95	Flexible hose
17	Washer	56	Flexible hose	96	Connector screw
18	Spring washer	57	Spring	97	Chemical discharge connector
19	Nut	58	Connector	98	Gasket
20	Carburetor gasket	59	Five way connector	99	Hexagonal nut
21	Rivet	60	Flexible hose	100	Flexible hose
22	Pin for label	61	Connector	101	Flexible hose
23	Adjusting wheel	62	Flexible hose	102	Switch board
24	Hexagonal fixing screw	63	Gasket	103	Three way fuel switch
25	Jet needle	64	Fuel tank fix connector	104	Flexible hose
26	O-ring	65	Chemical tank plug	105	Tube gasket
27	Hexagonal bolt	66	Chemical tank lid	106	Chemical discharge cover

PARTS DIAGRAM KK-TF-8625P/8625S



Chemical tank -- (Chemical tank is installed in the upper case of the machine. Chemicals should be put into the chemical tank)

1. Make sure the chemical control valve is closed.
2. Put the mixture of chemicals and diesel into the chemical tank.

Note: Please keep in mind that the mixing ratio of each chemical must comply with the instruction stated on the chemical container.

3. Check the liquid volume according to the marks on the chemical tank. Maximum capacity of chemical tank is 350ml. Please do not overfill.
4. Close the lid of the chemical tank.

Caution: Overuse of chemicals may cause dizziness, headache, nausea and vomiting. Do not put water into the chemical tank if there is an object which is apt to rust in work place.



Ignition:

1. Make sure the gas control valve is closed initially.
2. Assemble the butane gas container.
3. Put the machine on an even place where without inflammables.
4. Open the gas control valve by turning the knob counterclockwise to supply gas. Push the ignition switch to start the machine.

Note: Wind may cause malfunction of ignition, so try to ignite in a place of no wind.

In case, the machine could not be activated after pushing of 5 or 6 times, turn off the gas control valve and wait about 20 ~ 30 seconds and then repeat the above procedures.

5. After ignition, let the machine preheat 40-60 seconds for fogging.



Spraying Application:

- 1) After preheating, open the chemical control valve by turning the knob counterclockwise, repeat pushing and releasing the pump handle to start spray (fogging).

Note: Spray to the plant or object away from about 1-2 meters.

- When used as fogging, it is difficult to check the discharged particles with eyes, so please check the level of liquid in the chemical tank.
- 2) The discharge volume of chemical can be controlled by turning the chemical control knob.



- 3) The frequency of pumping action is 1 time in every 3-4 seconds. If fire is sprayed out, stop pumping immediately and close the gas valve. Put the machine on an even place and wait till the fire stops.

Note: For your safety, keep away from the discharged fog. Do not spray against the wind.

- Keep a distance from the shield of the burner to avoid burning your skin or clothes.
- After ignition of the machine, do not leave it aside without operation.
- If needed, refill with chemical or diesel, stop the machine and wait until it cools down

Stop work:

- 1) Stop pumping of the handle. After the spray stopped completely, turn off the gas control valve (clockwise)
- 2) Turn off the chemical control valve (clockwise) completely.
- 3) Repeat pushing the pump handle at least 5 times to spray out the undiluted chemical while the coil cools down.
- 4) Remove the gas container from the machine and put it in a cool place with ventilation.



Note: For long term storage, wash the diesel tank and chemical tank and put clean diesel into both tanks and assemble the machine well. Then store it in a dry and cool location with ventilation and out of reach of children.

Shoulder strap:



Attach and use the shoulder strap to carry the machine during work if needed

Problem	Indication	Reason	Remedy
The machine stops suddenly	Fuel empty	Fuel used up.	Refuel.
	No air into the engine	Diaphragm deformed or damaged	Clean or replace the diaphragm
	Clogged fuel pipe	Clogged filter wire	Clean the filter wire and fuel tank
	Slack fuel hose, air leakage	Slack hose connection	Fix leaky part, tighten the bolts and nuts
	Over or lack of distribution of fuel	The cock for fuel regulator was loose, too much / too small fuel control	Adjust the cock for fuel regulator. Tighten bolts and nuts
Capacity of fog is reduced	Lower engine sound and insufficient power	Clogged carbon crust inside the fogger pipe	Clean the carbon crust using a brush
	Air leak from the chemical tank lid	Chemical tank lid is not tight	Tighten the chemical tank lid
	The cock connection for chemical pipe leaking	The cock connection is not tight after long usage	Tighten the cock connection
	Nozzle clogged partially	Oil, dirt and impurities got deposited after long usage	Drain the chemical tank and clean nozzle tip
	Less pressure in the chemical tank	The one-way pressure valve is not working well	Check and clean or replace the one-way pressure valve
No fog	No pressure in the chemical tank	Chemical tank lid is not tightened yet	Tighten the chemical tank lid
	Holes of nozzle seats clogged	The one-way pressure valve is not working or pressure pipe leakage	Replace one-way pressure valve or repair pressure pipe
		Too much carbon got deposited	Clean or replace the nozzle

TROUBLE SHOOTING (KK-TF-8625P / 8625S / 8630)

Problem	Indication	Reason	Remedy
No ignition	No sound when starting	The battery box is not closed tightly	Close the battery box tightly
		Low capacity of battery	Replace the batteries
		Incorrect battery position	Fix the battery position correctly
		Wire falling off from the electrical circuit (e.g. Spark plug wire)	Inspect and repair electrical circuit
		Spark plug failed or incorrect gap	Replace the spark plug or adjust the gap to be 1.5-2mm
Normal ignition, but cannot start	Fuel is not sucked	Fuel inlet valve failed	Replace the valve
		Fuel tank lid is not closed tightly	Tighten the fuel tank lid
		Fuel filter wire is clogged	Clean the fuel filter wire
		Diaphragm deformed or torn	Clean the fuel tank and replace the diaphragm
	Air leakage from manual air pump	While pumping, feels very light	Replace the pump leather cup or repair the leaky section
	Carburetor flooding	Start again, failed again	Start according to the procedures, refer to "how to start"
Running is not stable	Less power	End of the fogger pipe has too much carbon crust, resulting in inadequate air input to the carburetor and combustion chamber	Use a carbon brush to clean the carbon crust
		Diaphragm containing oil, dirt or deformed or damaged	Clean the diaphragm or replace with a new one
		Fuel regulator valve is loose	Adjust it and tighten the lock nut

Advantages of KK-TF-8607:

1. This machine has separated spray coil and chemical pipe. There is no carbonization of chemicals and so it does not have problem of clogging in the coil.
2. It is not necessary to keep the diesel tank and equipment separately to prevent corrosion of the pump, because it has separated chemical tank and diesel tank.
3. Chemical utilization is maximized because the chemical goes to the discharge nozzle directly without vaporizing by heat.
4. The machine has versatile uses. Since there is no chemical change by heating, it can spray more kinds of chemicals.

Caution:

1. After use, remove the liquefied butane gas from the gadget.
2. After use, remove the chemical and diesel from their respective tanks and clean it
3. Maintain the interval as 8mm against the ignition insulator.
4. When fixing the butane gas onto the screen smoke gadget, fit the gas holder into the gas fixation bracket projection and turn it right to fix it strongly.
5. Care should be taken while inserting Butane gas cylinder into the bracket by handling it smoothly, otherwise the bracket gets damaged and need to be replaced.

Warning:

1. When the coil is clogged, you must stop working.
2. Overuse may cause damage to any other parts.
3. Use diesel only. (Never use kerosene or petrol.)

MAINTENANCE

CLEANING AND STORAGE (KK-TF-8625P / 8625S / 8630)

1. After the fogger is used, drain out the chemical that still remains in the chemical tank. Fill in 0.5 liter clean diesel in the tank, then, shake and rinse.
2. The electric circuit must always be kept clean and dry, not exposed to liquid chemical or water.
3. Turn on the machine once again to spray out the diesel so as to rinse the chemical pipe and valve.
4. After the engine is cool, clean the parts that may build up carbon, such as .
5. Clean up the dust and oil stain on the surface of the machine and empty the fuel tank.
6. If the machine has to be stored for a long time, empty the fuel in the tank, take out the batteries from the battery box, put the machine into a plastic bag and keep it in a cool and dry place.

CLEANING AND STORAGE (KK-TF-8605 MINI)

1. Immediately after use, while the coil is still red hot, clean it. This can be done as follows:
 - a) Change the lever position to “Water Cleaning” from “Spraying “position.
 - b) Pump it to clean any carbon deposited on the coil, with water,
 - c) If not done immediately, the hardened carbon blocks the coil passage, making cleaning difficult, leading even to the replacement of the coil (which is expensive).
2. While placing the machine on the diesel tank make sure that the locking screws are tight, otherwise the seating may get damaged.

TECHNICAL SPECIFICATIONS

Model	KK-TF-8625P / KK-TF-8625S	KK-TF-8630	KK-TF-8605 (MINI)	KK-TF-8607 (MINI)
Outer Dimension (mm)	1050x350x335	1050x300x335	50x19x36	63x19x36
Packaging Dimension (mm)	1095x355x380			
Fuel Used	Petrol		Liquid Butane gas	
Operation mode	Self-start & manual start	Manual & electric	Self-start	
Net Weight (Kg)	10.5	9.7	1.4	2
Fuel Capacity (L)	1.2		500 ml (butane gas)	
Chemical Tank Capacity (L)	6		2.5 L (Diesel+Chemical)	Diesel 2L Chemical 350ml
Consumption Capacity	1.4 liter/hour (petrol)	2.0 L/H	500 ml/hour of butane gas (depending on speed of operation)	
Particle size	10-50 microns		5-30 microns	
Fogging Capacity	25 (L/H)		13 (L/H)	
Battery		Dry battery 3V, Storage battery 6V 3.3Ah.		