



Wide Range of Products for Every Need



For more information give **MISSED CALL: 07676065555**



Many of our products have BIS: ISI certification.



User Manual



All 'FarmBoy' products are sold without any warranty or guarantee. Please satisfy yourself before buying this product. No returns, exchanges or refunds allowed.

**Note:** The purchase is not contingent upon a product demonstration. The purchaser shall satisfy himself with the product, including any product demonstration or verification of any function, before buying. KisanKraft Limited or its authorized dealers, including online sellers, shall not be liable to give any on-site demonstration after purchase of any of the product.

**KisanKraft Limited**

(Formerly known as KisanKraft Machine Tools P Ltd.)

Sri Huchhanna Tower, #4, 1<sup>st</sup> Main, 7-A Cross, Maruthi Layout, Dasarahalli, HAF Post, Hebbal, Bangalore 560024, Karnataka, INDIA

- ◆ Bangalore (HO) ◆ Ahmedabad ◆ Bhopal ◆ Bhubaneswar ◆ Coimbatore ◆
- ◆ Guwahati ◆ Shimla ◆ Hubli ◆ Hyderabad ◆ Jaipur ◆
- ◆ Karnal ◆ Kolkata ◆ Lucknow ◆ Pune ◆ Raipur ◆

**CONTENTS**

Before Getting Started ..... 3

Symbols on the Machine..... 3

Warning Labels on the Machine ..... 3

Safety Instructions ..... 5

Application ..... 10

Parts Description ..... 10

    FB-BC-8642 / 8652 ..... 10

    FB-BC4-8636 ..... 11

Assembly ..... 13

    FB- BC-8642 / 8652 ..... 13

    FB - BC4 - 8636 ..... 16

Fuel Handling ..... 17

Operation ..... 18

Maintenance ..... 22

Storage ..... 24

Transportation ..... 24

Troubleshooting ..... 25

Technical Specifications ..... 26

Parts Diagram & List- Engine (FB-BC-8642/52) ..... 27

Parts Diagram & List – Body (FB-BC-8642/52) ..... 29

Parts Diagram & List- Engine (FB-BC4-8636)..... 30

Parts Diagram & List- Body (FB-BC4-8636) ..... 33

KisanKraft has a large range of products to serve the farmers. A list of our products is given below:

<p><b>Brush Cutters and Accessories</b></p> <ul style="list-style-type: none"> <li>Brush Cutter/Power Weeder</li> <li>Backpack Brush Cutter</li> <li>Tea Pruner</li> <li>Pole pruner with Engine</li> <li>Reaper Attachment</li> <li>Blades-Circular</li> <li>Blades (2 &amp; 3 points)</li> <li>Baffle</li> <li>Nylon Rope</li> <li>Tap &amp; Go</li> </ul> <p><b>Chainsaws</b></p> <ul style="list-style-type: none"> <li>Petrol Chainsaw</li> <li>Electric Chainsaw</li> <li>Chain Sharpening Machine</li> </ul> <p><b>Engines and Water Pumps</b></p> <ul style="list-style-type: none"> <li>Engine –Diesel-(Horizontal)</li> <li>Engine –Diesel(Vertical)</li> <li>Engine-Kerosene</li> <li>Water Pump with Petrol Engine</li> <li>Water Pump with Kerosene Engine</li> <li>Water Pump with Diesel Engine</li> </ul> <p><b>Hand Tools</b></p> <ul style="list-style-type: none"> <li>Secateurs</li> <li>Folding Saw</li> <li>Garden Rake</li> <li>Garden Shovel</li> <li>Hedge Shear</li> <li>Lopper</li> <li>Telescopic Hedge Shear</li> <li>Telescopic Lopping Shear</li> <li>Tree Pruner</li> <li>Telescopic Steel Pipe &amp; Fruit Picker Bag</li> <li>Sheep Shear</li> </ul> <p><b>Garden Tools</b></p> <ul style="list-style-type: none"> <li>Electric Pressure Washer</li> <li>Hedge Trimmer</li> <li>Lawn Mower (Electric, Petrol &amp; Manual)</li> <li>Leaf Blower</li> </ul>	<p><b>Cultivators and Accessories</b></p> <ul style="list-style-type: none"> <li>Petrol and Diesel</li> </ul> <p><b>Sprayers and Accessories</b></p> <ul style="list-style-type: none"> <li>Battery Sprayer</li> <li>Portable Power Sprayer</li> <li>Trolley Sprayer</li> <li>Manual Knapsack Sprayer</li> <li>Manual Pressure Sprayer</li> <li>Rose Cans</li> <li>Hose Crimping Machine</li> <li>HTP Sprayer</li> <li>HTP Delivery Hose</li> <li>HTP Hose Reel</li> <li>HTP Stand</li> <li>HTP Gun / Lance(Brass Rod)</li> <li>Knapsack Power Sprayer</li> <li>Mister / Duster / Granuel Spreader</li> <li>HTP Sprayer Set with Diesel Engine</li> <li>HTP Sprayer Set with Kerosene Engine</li> <li>Fogging Machine</li> </ul> <p><b>Milking Machine</b></p> <ul style="list-style-type: none"> <li>Wood Shredder</li> <li>Fodder Ensiling Chaff Cutter</li> <li>Fodder Grinder Chaff Cutter</li> <li>Fodder Mini Chaff Cutter</li> </ul> <p><b>Harvester</b></p> <ul style="list-style-type: none"> <li>Maize Sheller</li> <li>Maize Sheller + Dehusker</li> <li>Maize Combine Harvester</li> <li>Onion Digger Carlotti Italy</li> <li>Tea Leaf Harvester</li> <li>Sugarcane Combine Harvester</li> <li>Sugarcane Leaf Stripper</li> </ul> <p><b>Transplanter and Post Hole Digger</b></p> <ul style="list-style-type: none"> <li>Paddy Transplanter (2 &amp; 8 Rows)</li> <li>Transplanter-Vegetable &amp; Tobacco</li> <li>Post Hole Digger(4" to 14" Augers)</li> </ul>
----------------------------------------------------------------------------------------------------------------------------------------------------------------------------------------------------------------------------------------------------------------------------------------------------------------------------------------------------------------------------------------------------------------------------------------------------------------------------------------------------------------------------------------------------------------------------------------------------------------------------------------------------------------------------------------------------------------------------------------------------------------------------------------------------------------------------------------------------------------------------------------------------------------------------------------------------------------------------------------------------------------------------------------------------------------------------------------------------------------------------------------------------------------------------------------------------------------------------------------------------------------------------------------------------------------------------------------------------------------------------------------------	-------------------------------------------------------------------------------------------------------------------------------------------------------------------------------------------------------------------------------------------------------------------------------------------------------------------------------------------------------------------------------------------------------------------------------------------------------------------------------------------------------------------------------------------------------------------------------------------------------------------------------------------------------------------------------------------------------------------------------------------------------------------------------------------------------------------------------------------------------------------------------------------------------------------------------------------------------------------------------------------------------------------------------------------------------------------------------------------------------------------------------------------------------------------------------------------------------------------------------------------------------------------------------------------------------------------------------------------------------------------------------------------------------------------------------------------------------------------------------

Part No	Part Name (Body)	Part No	Part Name (Body)
BA-4	Pinion	<b>BF</b>	Clutch Comp Assy
BA-5	N/A	BF-37	Clutch Drum
BA-6	Screw M5x28-Allen	BF-38	Stop Ring-35-inner
BA-8	Screw M5x12-Allen	BF-39	Bearing 6202-2RS
BA-9	Grease Nipple	BF-40	Stop Ring-15-Outer
BA-10	Gear Case	BF-41	Linker
BA-11	Blade Cover	BF-42	Rubber(Linker)
BA-12	Bearing 6000- 2 RS	BF-43	Stop Ring-40-Inner
BA-13	Gear	BF-44	Linker(outer Pipe)
BA-14	Gear Shaft	BF-45	6x30-Allen
BA-15	Bearing 6002-2 RS	<b>BG</b>	Safety Guard Assy
BA-16	Stop Ring-32-Inner	BG-49	Screw M5x12-Allen
BA-17	Holder-A	BG-51	Safety Guard Bracket
BA-18	Holder-B	BG-52	N/A
BA-19	N/A	BG-53	Scerw-ST4.2x16
BA-20	Nut M10-(L H)Nylon Flanged	BG-54	Guard
BB	Harness Assy	BG-56	Blade-Rope Cutter
BC	<b>N/A</b>	<b>BH</b>	Lever Assy
BC-22	Rubber Bush-Outer Pipe	BH-58	Buy #BH LEVER ASSY
BC-23	Oil Bearing-Outer Pipe	BH-59	Switch On/Off
BC-24	Drive Shaft	BH-60	Throttle Cable
BC-25	Outer Pipe With Bushes	BH-61	Clamp(Lever)
BD	Holder Assy	BH-62	Nut M-6
BD-28	Nut M-5	BH-62-1	Screw 6x20 Star
BD-29	Screw 5x20 Allen	BH-63	Screw 5x30 Star
<b>BE</b>		BH-64	Buy # LEVER ASSY
BE-30	Handle Rubber Cover	BH-65	
BE-31	Right Handle	BH-66	
BE-32	Screw M5x25-Allen	BH-67	

## Before Getting Started

Before using the machine for the first time be sure to read through this manual in order to avoid wrong operation. Please preserve this manual properly so that it can provide you with information whenever necessary.

## Symbols on the Machine

For safe operation and maintenance, symbols are carved in relief on the machine. According to these indications, please be careful not to make a mistake.

## Warning Labels on the Machine



Warning / Attention



Danger: Risk of fire or explosion



Read the instruction manual completely and carefully before using the tool.



Top speed of trimmer head is 6600 min<sup>-1</sup>



Wear head, eye and ear protection.



Top speed of blade is 7100 min<sup>-1</sup>



Wear protective gloves.



The port to refuel the "MIX FUEL"



Wear safety footwear



The guaranteed noise level



Danger: Tougging the rotating blade is forbidden.



With this symbol the manufacturer confirms that this tool is in accordance with applicable European directives.



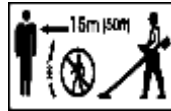
Beware of thrown objects.



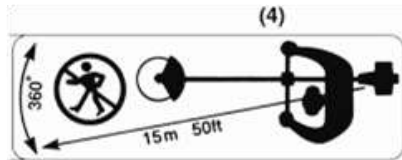
Hot surface: Risk of burn.



Keep away from fire



Keep all children, bystanders and helpers 15 meters away from the brush cutter



Never modify your BrushCutter.  
 We won't warrant the machine, if you use the remodeled BrushCutter or you don't observe the proper usage written in the manual

**CHOKE OPERATION (FB - BC- 8642 / 8652)**



Starting mode when the engine is hot (choke off).  
 Position: AIR CLEANER COVER



Starting mode when the engine is cold (choke on).  
 Position: AIR CLEANER COVER

**CHOKE OPERATION (FB-BC4- 8636)**

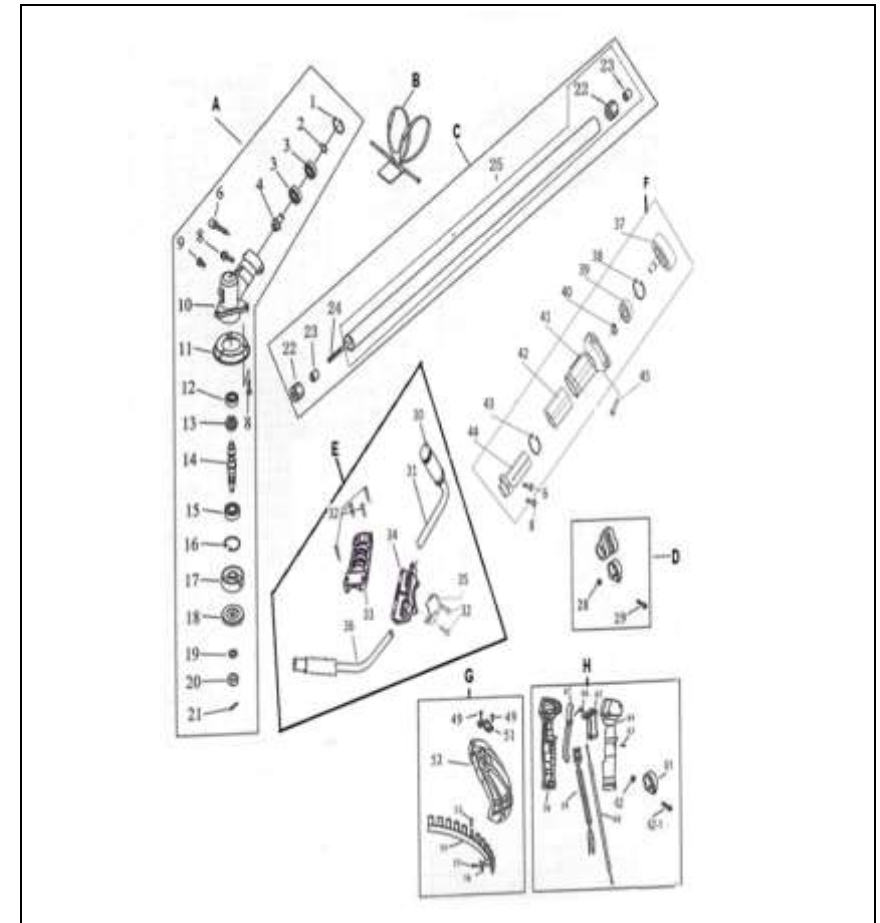


The direction to close the choke  
 Position:  
 AIR CLEANER COVER



The -direction to open the choke  
 Position:  
 AIR CLEANER COVER

**Parts Diagram & List- Body (FB-BC4-8636)**



Part No	Part Name (Body)	Part No	Part Name (Body)
BA	Gear Case Assy	BE-33	Cap Up-Handle
BA-1	Stop Ring -26-Inner	BE-34	Bracket-Handle
BA-2	Stop Ring -10-Outer	BE-35	Cap Lower-Handle
BA-3	Bearing-6000-2RS	BE-36	Left Handle

KK-No	KK-Name	Qty	KK-No	KK-Name	Qty
E-27	Cylinder	1	E-73	Screw	
E-28	Exhaust valve	1	E-74	Crankcase	1
E-29	Intake valve	1	E-75	Screw	
E-30	Piston Pin		E-76	Screw	
E-31	Circlip-Piston Pin		E-77	Fuel Tank	1SET
E-32	Gasket -Cylinder Cover		E-78	Fuel Tank Lid	
E-33			E-79	Stand (Fuel Tank)	1
E-34	Clip	1	E-80	Screw	
E-35	Oil Pipe	1	E-81	Cushion fuel tank	1
E-36	Intake Manifold	1	E-82	Screw Ratchet	
E-37	Breather Pipe	1	E-83	Arm Swing-Starter	
E-38	Screw		E-84	Collar-Starter	
E-39	Gasket Carburetor	1	E-85	Rope reel	
E-40	Carburetor	1	E-86	Recoil spring	
E-41	Air Filter Inside Cover	1	E-87	Starter cover	
E-42	Screw		E-88	Guide Rope	
E-43	Screw		E-89	Starter Rope	
E-44	Screw		E-90	Screw	
E-45	Air Filter Sponge	1	E-91	Screw	
E-46	AIR Filter Out Side Cover	1	E-92	Screw	

## IMPORTANT

If warning label peel off or become soiled and impossible to read, you should contact the dealer from whom you purchased the product to order new labels and affix them in the required location(s).

## WARNING

Never modify your brush cutter. We won't warrant the machine, if you use the remodeled brush cutter or you don't observe the proper usage written in the manual.

## Safety Instructions



1. Read this manual carefully until you completely understand and follow all safety and operating instructions.
2. Keep this manual handy so that you may refer to it later whenever any questions arise. Also note, if you have any questions which cannot be answered herein, contact the dealer from whom you purchased the product.
3. Always be sure to include this manual when selling, lending, or otherwise transferring the ownership of this product.
4. Never allow children or anyone unable to fully understand the directions given in the manual to use the machine.



## Working Condition



1. When using the product, you should wear proper clothing and protective equipment.
  - (1) Helmet
  - (2) Ear protectors
  - (3) Protection goggles or face protector
  - (4) Thick work gloves
  - (5) Non-slip-sole work boots
2. And you should carry with you.
  - (1) Attached tools and files
  - (2) Properly reserved fuel
  - (3) Spare blade
  - (4) Things to notify your working area (rope, warning signs)
  - (5) Whistle (for collaboration or emergency)
  - (6) Hatchet or saw (for removal of obstacles)



- Do not wear loose clothing, jewelry, short trousers, sandals, or go barefoot. Do not wear anything which might be caught by a moving part of the unit. Secure hair so it is above shoulder length.

### Working Circumstance



- Never start the engine inside a closed room or building. Exhaust gases contain dangerous carbon monoxide.
- Never use the product,
  - When the ground is slippery or when you can't maintain a steady posture.



- At night, at times of heavy fog, or at any other times when your field of vision might be limited and it would be difficult to gain a clear view of the working area.
- During rain storms, during lightning storms, at times of strong or gale-force winds, or at any other times when weather conditions might make it unsafe to use the product.

### Working Plan



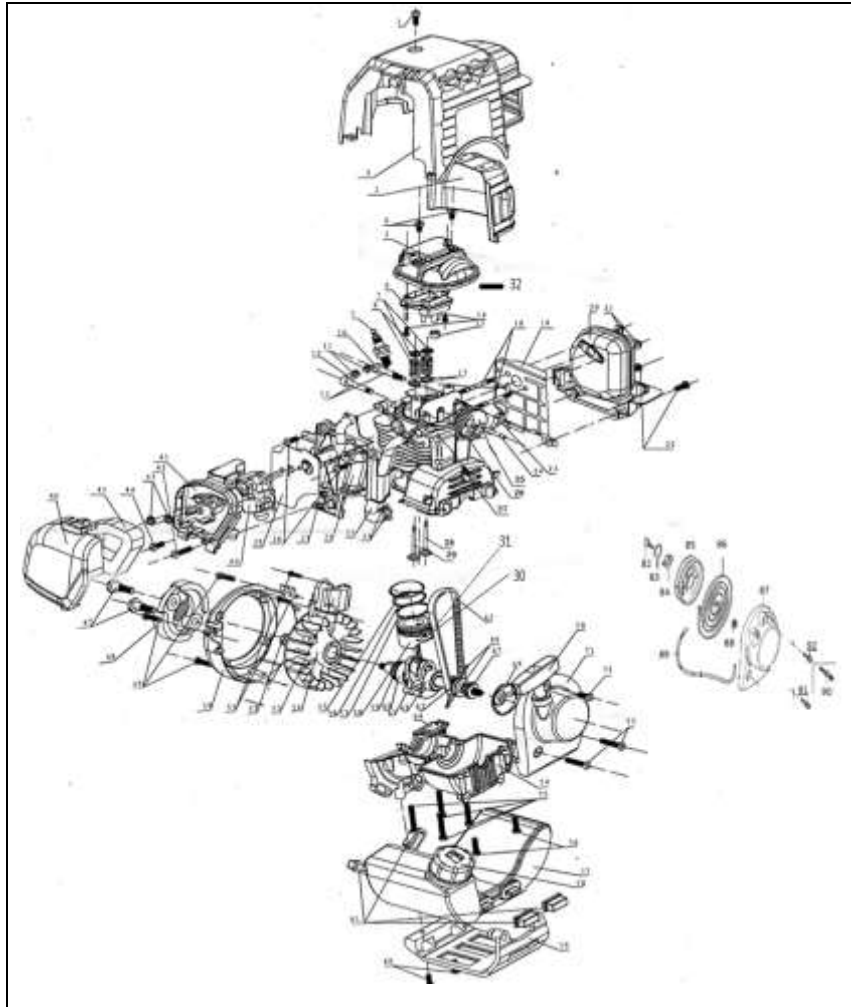
- You should never use the product when under the influence of alcohol, when suffering from exhaustion or lack of sleep, when suffering from drowsiness as a result of having taken cold medicine or at any other time when a possibility exists that your judgment might be impaired or that you might not be able to operate the product properly and in a safe manner.



- When planning your work schedule, allow plenty of time to rest. Limit the amount of time over which the product is to be used continuously to somewhere around 30~40 minutes per session, and take 10~20 minutes of rest between work sessions. Also try to keep the total amount of work performed in a single day under 2 hours or less.

KK-No	KK-Name	Qty	KK-No	KK-Name	Qty
E-1	Screw		E-47	Clutch Bolt	2
E-2	Cover Engine	1 Set	E-48	Clutch shoe assy	1
E-3	Muffler Cover		E-49	Screw	
E-4	Screw		E-50	Fan cover	1
E-5	Cylinder Cover	1	E-51	Screw	
E-6	Filter Breather	1 Set	E-52	Screw	
E-7	Valve spring retainer	2	E-53	Ignition coil	1
E-8	Valve spring	2	E-54	Fly wheel	1
E-9	Sparkplug	1	E-55	Piston Rings Set	1SET
E-10	Arm EX Valve Rocker	1	E-56		
E-11	Nut & Screw Rocker Adjusting		E-57		
E-12	Arm In Valve Rocker	1	E-58	Piston	1SET
E-13	Rocker Shaft	1	E-59	Oil Seal 15x25x7	1
E-14	Screw		E-60	Bearing	1SET
E-15	Grommet(Cylinder Cover)	1	E-61	Crankshaft	
E-16			E-62	Bearing	
E-17	Seal Valve Stem	1	E-63	Timing Belt Wheel	
E-18	Stud	1SET	E-64	Plate Assy Oil Outlet Valve	1
E-19	Air Guide Metal	1	E-65	Timing Belt	1
E-20	Muffler	1	E-66	Throw Oil Board	
E-21	Nut		E-67	Oil Seal 10x20x5	1
E-22	Screw		E-68		
E-23	Lifter Comp EX Valve	1	E-69	Starter reel	1
E-24	Pin Cam wheel	1	E-70	Starter Handle	1SET
E-25	Cam wheel	1	E-71	Starter assy	
E-26	Lifter Comp In Valve	1	E-72	Screw	

**Parts Diagram & List- Engine (FB-BC4-8636)**



**WARNING**



1. If you don't observe the working time, or working manner, Repetitive Stress Injury (RSI) could occur. If you feel discomfort, redness and swelling of your fingers or any other part of your body, see a doctor before getting worse.
2. To avoid noise complaints, in general, operate product between 8a.m. and 5p.m. on weekdays and 9a.m. to 5p.m. during Weekends.



**NOTE:**

Check and follow the local regulations as to sound level and hours of operations for the product.

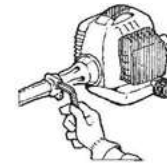
**Before Starting the Engine**



1. The area within a perimeter of 50 feet (15m) of the person using the product should be considered a hazardous area into which no one should enter. If necessary, yellow warning rope, warning signs should be placed around the perimeter of the area. When work is to be performed simultaneously by two or more persons, care should also be taken to constantly look around or otherwise check for the presence and locations of other people working so as to maintain a distance between each person sufficient to ensure safety.
2. Check the condition of working area to avoid any accident by hitting hidden obstacles such as stumps, stones, cans, or broken grass.

**IMPORTANT**

Remove any obstacle before beginning work.

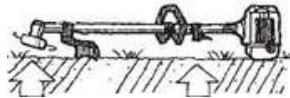


3. Inspect the entire unit for loose fasteners and fuel leakage. Make sure that the cutting attachment is properly installed and securely fastened.
4. Be sure the debris guard is firmly attached in place.
5. If the cutting head is the metal blade, use the shoulder strap. Adjust the strap for comfort before starting the engine. The strap should be adjusted so the left hand can comfortably hold the handlebar grip approximately waist high

## Starting the Engine



1. Keep bystanders and animals at least 50feet (15m) away from the operating point. If you are approached, immediately stop the engine.
2. The product is equipped with a centrifugal clutch mechanism, so the cutting attachment begins to rotate as soon as the engine is started by putting the throttle into the start position. When starting the engine, place the product onto the ground in a flat clear area and hold it firmly in place so as to ensure that neither the cutting part nor the throttle come into contact with any obstacle when the engine start.



**⚠️ WARNING: Never place the throttle into the high speed position when starting the engine.**

3. After starting the engine, check to make sure that the cutting attachment stops rotating when the throttle is moved fully back to its original position. If it continues to rotate even after the throttle has been moved fully back, turn off the engine and take the unit to your authorized servicing dealer for repair.

## Using the Product

### ⚠️ IMPORTANT

Cut only materials recommended by the manufacturer. And use only for tasks explained in the manual.



1. Grip the handles firmly with both hands using your whole hand. Place your feet slightly apart (slightly further apart than the width of your shoulders) so that your weight is distributed evenly across both legs, and always be sure to maintain a steady, even posture while working.
2. Keep cutting attachment below waist level.
3. Maintain the speed of the engine at the level required to perform cutting work, and never raise the speed of the engine above the level necessary.
4. If the unit start to shake or vibrate, turn off the engine and check the whole unit. Do not use it until the trouble has been properly corrected.
5. Keep all parts of your body away from rotating cutting attachment and hot surfaces.

## Parts Diagram & List – Body (FB-BC-8642/52)

SI No.	Part Name	Qty
1.	Housing	1
2.	Bolt M5 x 25	8
3.	Bolt M5 x 12	2
4.	Bolt M6 x 25	1
5.	Nut M6	1
6.	Hanger Assy	
7.	Right handle	1
8.	Bracket Assy	1
9.	Bolt M6 x 35	2
10.	Plate	1
11.	Aluminium pole	1
12.	Gearbox Assy	1
13.	3- Teeth blade	1
14.	Nylon head	1
15.	Blade	1
16.	Bolt M4 x 10	3
17.	Debris guard	1
18.	Driving shaft	1
19.	Shaft sleeve	6
20.	Left handle	1



SI No.	Part Name	Qty	SI No.	Part Name	Qty
1.	Bolt M5*25	4	31.	Cover, cylinder	1
2.	Sider Cover	1	32.	Bolt M5*12	2
3.	Screw M8	2	33.	Bolt M5*20	4
4.	Washer	2	34.	Washer	4
5.	Clutch	1	35.	Cylinder	1
6.	Washer	2	36.	Spark Plug	1
7.	Nut M8	1	37.	Gasket, cylinder	1
8.	Rotor	1	38.	Piston Ring	2
9.	Bolt M5*20	9	39.	Piston	1
10.	Coil	1	40.	Bearing K10*13*16	1
11.	Coil Assy	2	41.	Piston Pin	1
12.	Bolt M5*35	4	42.	Snap Ring	2
13.	Oil Seal	1	43.	Cover, Muffler	1
14.	Pin	4	44.	Bolt M5*12	1
15.	Left Crankcase	1	45.	Bolt M6*55	2
16.	Key	1	46.	Muffler	1
17.	Crankshaft	1	47.	Gasket, Muffler	1
18.	Bearing	2	48.	Gasket, Insulator	1
19.	Gasket, crankcase	1	49.	Insulator	1
20.	Right Crankcase	1	50.	Gasket, Carburetor	1
21.	Oil Seal	1	51.	Carburetor	1
22.	Pulley	1	52.	Body Assy	1
23.	Nut M8	1	53.	Element	1
24.	Alum Washer	1	54.	Plate	1
25.	Recoil Assy	1	55.	Bolt M5*55	2
26.	Rubber, Bracket Tank	1	56.	Cover	1
27.	Bracket Tank	1	57.	Cover, Air Filter	1
28.	Bolt M5*16	1	58.	Bolt M5*30	2
29.	Cover	1	59.	Fuel Tank	1
30.	Cable Clip	1	60.	Bracket Tank	1



### Maintenance



### Handling Fuel



- Never touch the muffler, spark plug, or other metallic parts of the engine while the engine is in operation or immediately after shutting down the engine. Doing so could result in serious burns or electrical shock.

#### If Someone Comes

- Guard against hazardous situations at all times. Warn adults to keep pets and children away from the area. Be careful if you are approached. Injury may result from flying debris.
- If someone calls out or otherwise interrupts you while working, always be sure to turn off the engine before turning around

- In order to maintain your product in proper working order, perform the maintenance and checking operations described in the manual at regular intervals.
- Always be sure to turn off the engine before performing any maintenance or checking procedures.

#### **WARNING**

**The metallic parts reach high temperatures immediately after stopping the engine.**

- Under no circumstances should you ever take apart the product or alter it in any way. Doing so might result in the product becoming damaged during operation or the product becoming unable to operate properly

- The engine of the product is designed to run on a mixed fuel which contains highly flammable petrol. Never store cans of fuel or refill the tank of the unit in any place where there is a boiler, stove, wood fire, electrical sparks, welding sparks, or any other source of heat or fire which might ignite the fuel.
- Never smoke while operating the unit or refilling its fuel tank.
- When refilling the tank, always turn off the engine and allow it to cool down. Take a careful look around to make sure that there are no sparks or open flames anywhere nearby before refueling.
- Wipe spilled fuel completely using a dry rag if any fuel spillage occurs during refueling.
- After refueling, screw the fuel cap back tightly onto the fuel tank and then carry the unit to a spot 10feet (3m) or more away from where it was refueled before turning on the engine.

## Transportation



1. When hand-carrying the product, cover over the cutting part if necessary, lift up the product and carry it paying attention to the blade.
2. Never transport the product over rough roads over long distances by vehicle without removing all fuel from the fuel tank. If doing so, fuel might leak from the tank during transport.

## Application

If the Brush cutter is fitted with **cutting string** as trimmer as attachment, it is used for **cutting grass** grown in **park, garden** and **around tree** or **fence**.

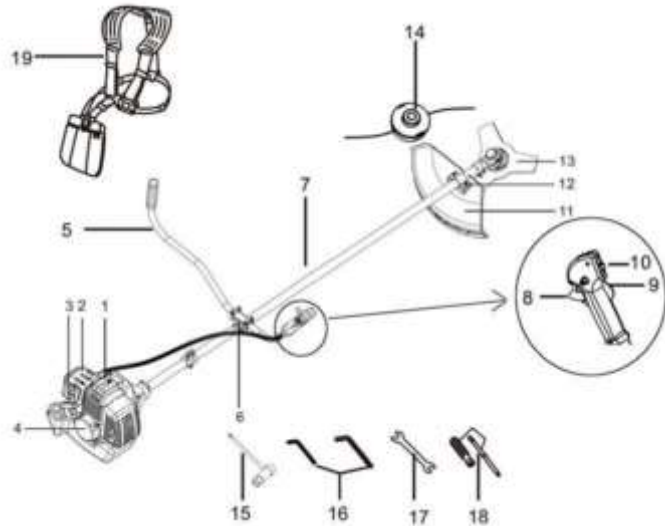
If the Brush cutter uses **metal cutting blade** as attachment, used for **cutting grass, weed** or **light plant**.

When Brush cutter uses **metal (TCT) cutting blade** with **paddy guard** as attachment, used for harvesting **paddy, wheat** and other **cereal crops**.

**Note:** Any other purpose not specified and permitted in this manual may damage device and cause serious injury to the user. Do not use this device to cut thorn, shrub or bush. The manufacturer shall not be responsible for damage caused by wrong operation.

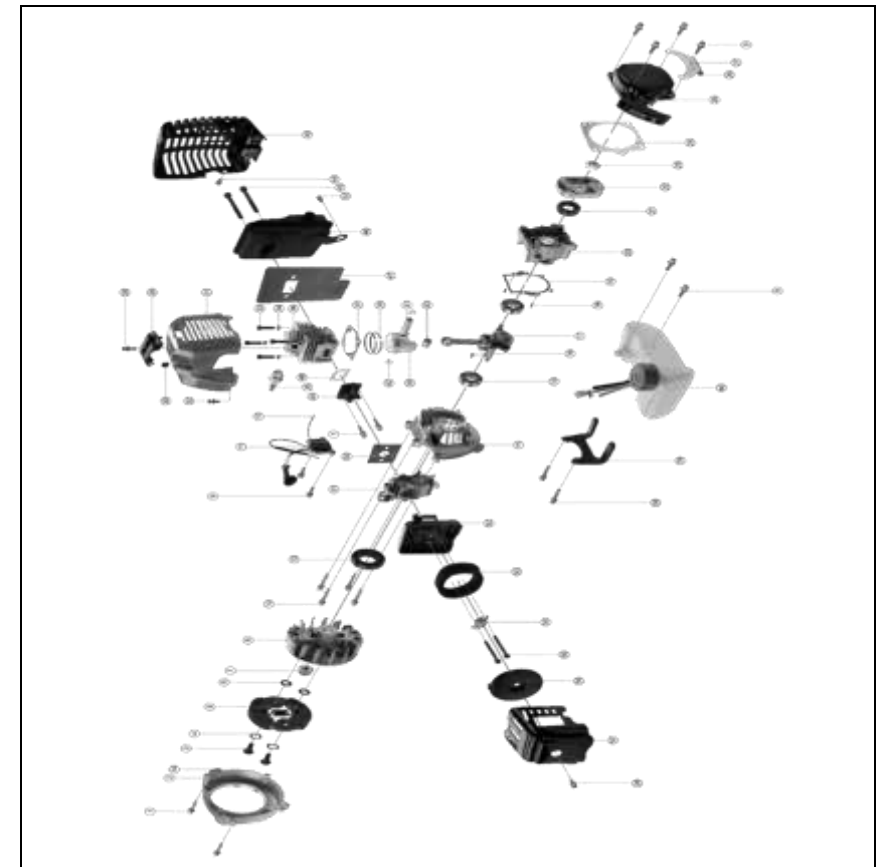
## Parts Description

**FB-BC-8642 / 8652**



<b>Model</b>	<b>FB-BC4-8636</b>
Displacement	35.8 cc
Engine	4-Stroke
Rated Power	0.9kW / (1.2hp) @ 6500 rpm
Net weight	7.5 kg
Accessories	3-teeth blade, Nylon head, single-shoulder belt, one-piece shaft

## Parts Diagram & List- Engine (FB-BC-8642/52)



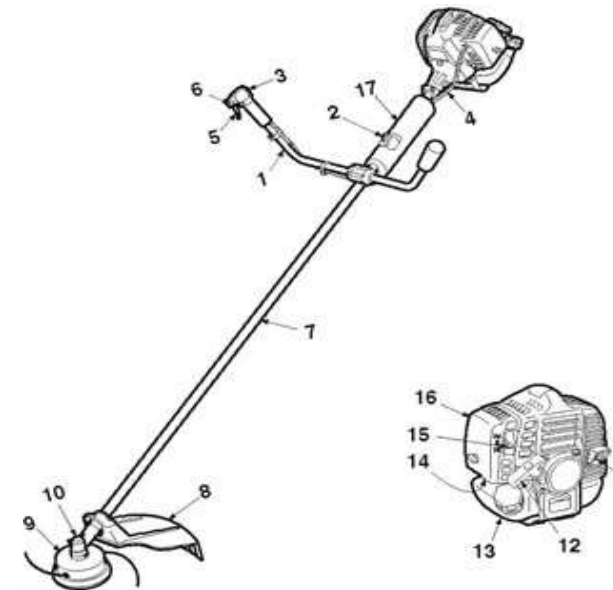
## Technical Specifications

Model	FB-BC-8652	FB-BC-8642
Engine type	Air-cooled, 2-stroke	
Equipment mobility	Hand-held	
Maximum engine power	1.6kW (2.2 hp )	1.2kW (1.6 hp)
Engine displacement	52 cc	42.7 cc
Engine Max speed	10000 min <sup>-1</sup>	
Engine idling speed	3000±300 min <sup>-1</sup>	
Fuel Mixture	Petrol 25 : Oil 1	
Volume of fuel tank	1.2 Liter	
Starter	Recoil	
Spark plug	LD-BM6A	
Carburetor	Diaphragm type	
Weight (without harness and petrol)	7.9 kg	
Tested sound pressure level, L <sub>PA</sub> (2000/14/EC)	L <sub>PA</sub> : 107.7 dB(A), k=3 dB(A)	
Guaranteed sound power level, L <sub>WA</sub> (2000/14/EC)	L <sub>WA</sub> : 113 dB(A), k=3 dB(A)	
Vibration level	9.661m/s <sup>2</sup> , K=1.5 m/s <sup>2</sup>	
Overall size (LxWxH)	1900 X 650 X 260 mm	
Transmission	Centrifugal clutch, Rigid driveshaft Cutting	
Head rotating direction	Clockwise(Operator view) Standard	
3 teeth blade thickness	2.0 mm	
Cutting line diameter	2.4 mm	

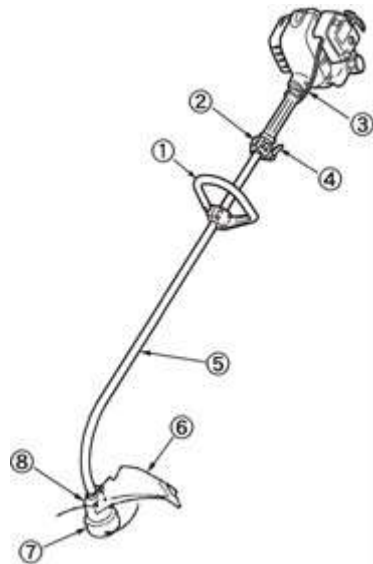
**Note:** Technical data is subject to change without prior notice.

- |                           |                             |
|---------------------------|-----------------------------|
| 1. Engine                 | 11. Protection shield       |
| 2. Air cleaner cover      | 12. Protection shield plate |
| 3. Choke lever            | 13. 3T blade                |
| 4. Recoil starter         | 14. Line Head               |
| 5. Handle                 | 15. Wrench                  |
| 6. Handle branket         | 16. Angled bar              |
| 7. Pipe                   | 17. Spanner                 |
| 8. Throttle Trigger lever | 18. Wrench                  |
| 9. Throttle lever         | 19. Harness                 |
| 10. Switch                |                             |

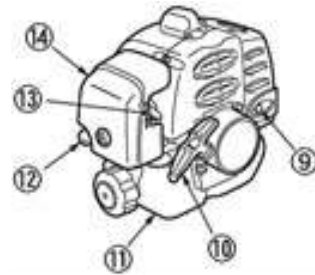
## FB-BC4-8636



- |                          |                       |
|--------------------------|-----------------------|
| 1. Handle                | 10. Gear case         |
| 2. Shoulder strap hanger | 11. Spark arrester    |
| 3. Ignition switch       | 12. Starter knob      |
| 4. Throttle cable        | 13. Fuel tank         |
| 5. Throttle lever        | 14. Primer pump       |
| 6. Throttle set button   | 15. Choke lever       |
| 7. Drive shaft housing   | 16. Air cleaner cover |
| 8. Debris guard          | 17. Protector         |
| 9. Cutting line head     |                       |



- 1. Loop handle
- 2. Ignition switch
- 3. Throttle cable
- 4. Throttle lever
- 5. Drive shaft housing
- 6. Debris guard
- 7. Cutting line head



- 8. Bearing case
- 9. Spark arrester
- 10. Starter knob
- 11. Fuel tank
- 12. Primer pump
- 13. Choke lever
- 14. Air cleaner cover

- 2. Never transport the product over rough roads over long distances by vehicle without removing all fuel from the fuel tank. If doing so, fuel might leak from the tank during transport.

## Troubleshooting

### Case 1. Starting failure

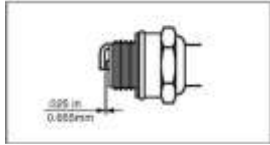
Check	Probable cause	Action to be taken
Fuel tank	Incorrect fuel	Drain it and with correct fuel
Fuel filter	Fuel filter is clogged	Clean the fuel filter
Carburetor adjustment screw	Out of normal range	Adjust to normal range
Spark plug (no spark)	Spark plug is fouled/wet	Clean/dry the spark plug
	Plug gap is incorrect	Correct (GAP: 0.6~0.7mm)
Spark plug	Disconnected	Retighten the spark plug

### Case 2. Engine starts but does not keep running/Hard re-starting:

Check	Probable cause	Action to be taken
Fuel tank	Incorrect fuel or staled fuel	Drain it and with correct fuel
Carburetor adjustment screw	Out of normal range	Adjust to normal range
Muffler, cylinder (exhaust port)	Carbon is built-up	Wipe away
Air cleaner	Clogged with dust	Wash
Cylinder fin, fan cover	Clogged with dust	Clean

When your unit seems to need further service, please contact your dealer or company service center

## Spark Plug:



- Starting failure and misfiring are often caused by a fouled spark plug. Clean the spark plug and check that the plug gap is in the correct range. For a replacement plug, use the correct type
- Periodically clean the spark plug and check that the spark gap is in the correct range.

### ⚠️ IMPORTANT

Note that using any spark plugs other than those designated may result in the engine failing to operate properly or in the engine becoming overheated and damaged.

- To install the spark plug, first turn the plug until it is finger tight, then tighten it a quarter turn more with a socket wrench.

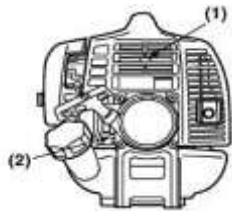
TIGHTENING TORQUE: 9.8~11.8 N.m

## Muffler:

### ⚠️ WARNING

- Inspect periodically, the muffler for loose fasteners, any damage or corrosion. If any sign of exhaust leakage is found, do not use the brush cutter and have it repaired immediately.
- Note that failing to do so may result in the engine catching on fire.

## Intake Air Cooling Vent:



- (1) Cylinder fin  
 (2) Intake air cooling vent (back)

### ⚠️ WARNING

Check the intake air cooling vent and the area around the cylinder cooling fins after every 25 hours of use for blockage, and remove any waste which has attached itself to the brush cutter.

### ⚠️ IMPORTANT

If waste gets stuck and causes blockage around the intake air cooling vent or between the cylinder fins, it may cause the engine to overheat, and that in turn may cause mechanical failure on the part of the brush cutter

## Storage

Aged fuel is one of major causes of engine starting failure. Before storing the unit, empty the fuel tank and run the engine until it uses all the fuel left in the fuel line and the carburetor. Store the unit indoor taking necessary measures for rust prevention.

## Transportation

- When hand-carrying the product, cover over the cutting part if necessary, lift up the product and carry it paying attention to the blade.

## Assembly

### FB- BC-8642 / 8652

#### Installing Handle:



- Loosen the 4bolts on the upper cap and insert the handles equally. Retighten the bolts.
- Put the handle assembly into the bracket and put the upper cap over it. Tighten the cap securely.

#### Connecting Throttle Wire:



- Remove the air cleaner cover.
- Connect the end of the throttle wire to the joint on the top of the carburetor.

#### Connecting Switch Wires:



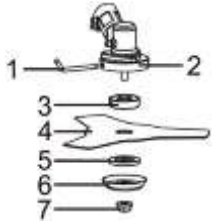
Connect the switch wires between the engine and the main unit.  
 Pair the wires of the same color.

#### Installing Protection Shield:



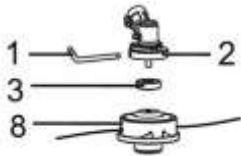
Attach the protection shield with the bolts combined to the shaft tube.

### Installing Cutting Blade:



1. Put the angled bar (1) into the side holes of the gear case (2) and the plate (3) so as to fasten the axle.
2. Mount the blade (4) and the washer (5) onto the axle.
3. Mount the washer (6) and the nut (7). Fasten tightly anti-clockwise.

### Installing Cutting Head:



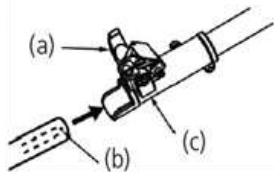
1. Put the angled bar (1) into the side holes of the gear case (2) and the plate (3) so as to fasten the axle.
2. Mount the trimmer head (8) on the axle. Fasten tightly anti-clockwise.

### Note



Before using the trimmer head, mount the trimmer knife (E) to protection shield (F) with 3 screws. When the machine is running, tap the trimmer head on the ground, and trimmer line will come out automatically. The trimmer knife will cut and keep the trimmer line in the correct length.

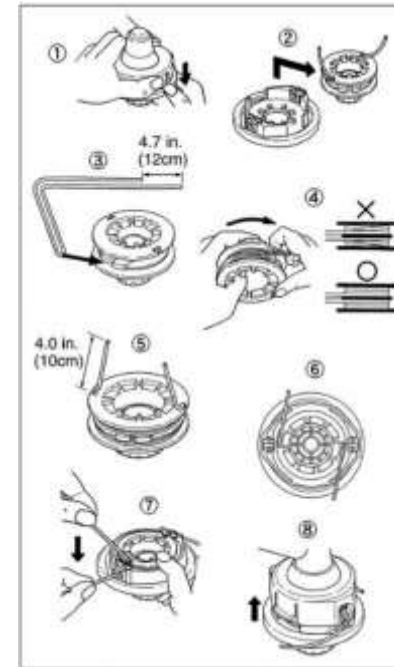
### Connecting Cutting Attachment:



Insert the trimmer cutting attachment (b) into the main drive shaft (c) and tighten the knob (a) on the split connector securely.

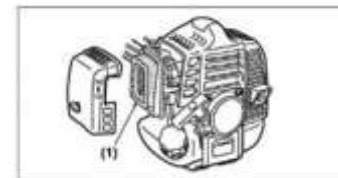
**IMPORTANT**  
 Align the cutting attachment into split connector by locking it.  
 When difficult to engage, twist the shaft housing slightly.

### Refilling Trimming Line:



1. For replacement line, use a diameter of 2.4mm (.095in). The spool is capable for a line up to 6m (20ft) on the 10cm (4") head. Avoid using a larger line as it may cut down the trimming performance.
2. Pinch the slotted area on the both sides of the spool housing to unhook the bottom cap.
3. Take out the spool and pull off the old line. Put one end of new line through the spool holes and pull it until the length is equal between each part of the line.
4. Wind up the line in the correct direction as indicated on the spool.
5. Hook each end of the line in the slot on the edge of the spool, and then put the ends through the eyelets on the housing. Make sure that the spring and the washers are in place.
6. While holding the spool against the housing, pull the line ends to release them from the slot.
7. Line up the slot on the bottom cap with the hook on the housing, press the cap against the housing until it clicks.

### Air Filter:



The air filter, if clogged, will reduce the engine performance. Monthly check and clean the filter element in warm, soapy water as required. Dry completely before installing. If the element is broken or shrunk, replace with a new one.

Note: In the adjacent fig:  
 (1) Air Filter

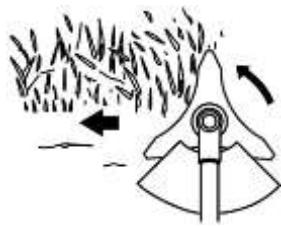
### Fuel Filter:



When the engine runs short of fuel supply, check the fuel cap and the fuel filter for blockage.

Note: In the adjacent fig:  
 (1) Fuel Filter

### Cutting Method:



1. Use the front left side cutting.
2. Guide the blade from your right to left with it tilted slightly to your left.
3. When mowing a wide area, start working from your left end to avoid interference of cut grass.
4. The blade may be seized by weeds if the engine speed is too low, or the blade cuts too deep into weeds. Adjust the engine speed and cutting depth according to the condition of object.

### ⚠️ WARNING

- If the grass or other object gets caught in the blade, or if the unit starts to shake or vibrate, turn off the engine and check the whole unit. Change the blade if it has been damaged.
- Turn off the engine and make sure the blade has completely stopped before checking the blade, and removing any object got caught in.

### Maintenance

### ⚠️ WARNING

- Always be sure to stop the engine before inspecting the brush cutter for problems or performing maintenance.
- Never alter the brush cutter or take the engine apart.

	System/components	Procedure	Before use	Every 25 hours after	Every 50 hours after	Every 100 hours after	Note
ENGINE	fuel leaks, fuel spillage	wipe out	✓				
	fuel tank, air filter, fuel filter	inspect/clean	✓	✓			replace, if necessary
	idle speed adjuster	see adjusting idling speed	✓				replace carburetor if necessary
	spark plug	clean and readjust plug gap			✓		GAP: .025 in (0.6 – 0.7 mm) replace, if necessary
	intake air cooling vent	clean		✓			
SHAFT	throttle trigger, stop switch	check operation	✓				
	cutting parts	replace if something's wrong	✓				
	angle transmission	grease		✓			
	screws/nuts/bolts	tighten/replace	✓			✓	except adjusting screws
	cutting attachment guard	make sure to attach	✓				

### Harness:



### WARNING

- **ALWAYS WEAR THE PROVIDED HARNESS WHEN USING THE MACHINE!**
- Always make sure the machine is hooked securely to the harness. If you don't, you will be unable to control the machine safely. This can result in injury to yourself or others.
- Never use a harness with a defective quick release or any other damage.

### How to Wear:



1. Wear the provided harness without twisted bands, with the hanger on your right side.  
(1) Hanger

### Balance the Unit:



1. Hook your machine to the hanger.
2. Adjust the bands of the harness to have the blade parallel to the ground when standing in your normal working position to provide you most effectiveness and comfort on operating the machine.
3. In order to prevent the hanger position to change during operation, turn up the extra part of the band from the buckle.
4. When correctly adjusted, check the correct working of the harnesses' QUICK RELEASE.

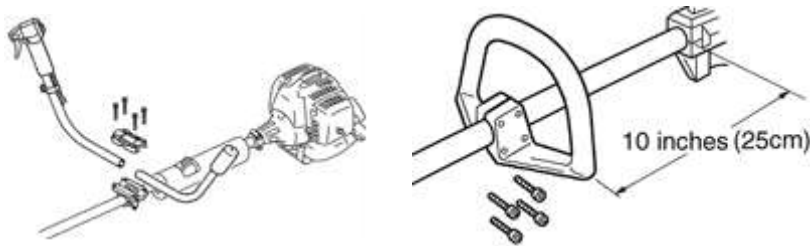


## Assembly

### FB - BC4 - 8636

#### INSTALLING HANDLE:

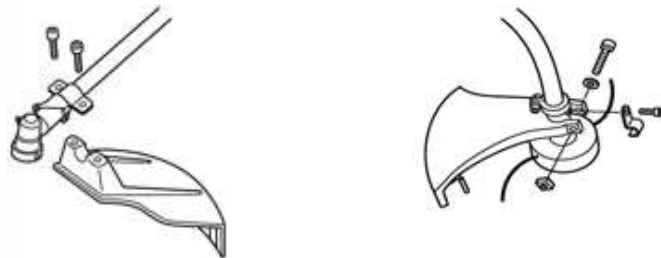
- Mount the handle to the shaft tube and clamp it at a location that is comfortable to you.



#### INSTALLING DEBRIS GUARD:

This model pack with already installed debris guard.

- Put the debris guard on the gear box, attach it with the screws and hardware provided.



#### INSTALLING CUTTING HEAD:

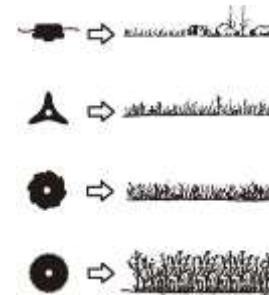
This model pack with already installed cutting head.

- While locking the gear shaft, by inserting the supplied tool into the upper holder on the gear box, loosen and remove the hexagonal (left-handed)
- Fit the line head assembly to the gear shaft over the holders. Hand tighten it securely.

## Adjusting the Line Length:

- Your brush cutters is equipped with a semiauto type nylon line head that allows the operator to advance the line without stopping the engine. When the line becomes short, lightly tap the head on the ground while running the engine at full throttle.
- Each time the head is bumped, the line advance about 1 inch (25.4 mm). For better effect, tap the head on bear ground or hard soil. Avoid bumping in thick, tall grass as the engine may stall by overload.

## Metal Blade Usage:



### NOTE:

Choose a suitable recommended cutting attachment according to the object to be cut.

### WARNING

When sharpening, removing, or reattaching the blade, be sure to wear thick, sturdy gloves and use only proper tools and equipment to prevent injury.



1. Check the bolt to fasten the blade and be sure the bolt has no fault, and no abrasion.
2. Be sure that the blade and the holder have been fastened according to instruction and the blade turns smoothly without abnormal noise.



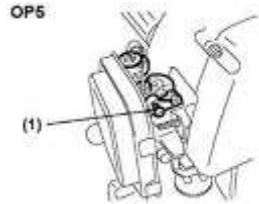
### WARNING

- The rotating parts fastened incorrectly may cause serious accident to the operator.
- Make sure that the blade is not bent, warped, cracked, broken or damaged.
- If you find any error to the blade, discard it and change new one.
- By using the harness, hang the unit on your right side. Adjust the harness length so that the cutting head may become parallel to the ground



Except for an emergency, avoid stopping the engine while pulling the throttle lever.

### Adjusting Idling Speed:



1. When the engine tends stop frequently at idling mode, turn the adjusting screw clockwise.
2. When the cutting head keeps rotating after releasing the trigger, turn the adjusting screw.

**NOTE:**

Warm up the engine before adjusting the idling speed.

### Trimmer Head Usage:

**WARNING**

1. Always wear eye protection such as safety goggles. Never lean over the rotating cutting head. Rocks or other debris could be thrown into eyes and face and cause serious personal injury.
2. Keep the debris guard attached in place at all times when the unit is operated.

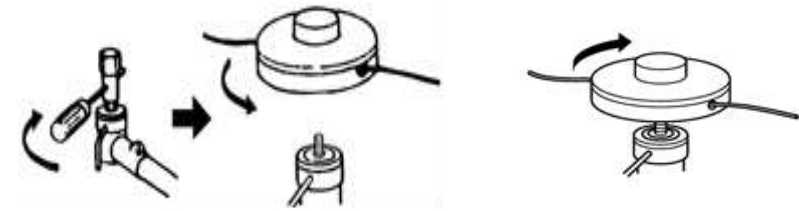
### Trimming Grass and Weeds:

Always remember that the TIP of the line does cutting. You will achieve better results by not crowding the line into the cutting area. Allow the unit to trim at its own pace.



1. Hold the unit so the head is off the ground and is tilted about 20 degrees toward the sweep direction. (OP6)

2. You can avoid thrown debris by sweeping from your right to the left.
3. Use a slow, deliberate action to cut heavy growth. The rate of cutting motion will depend on the material being cut. Heavy growth will require slower action than will light growth.
4. Never swing the unit as hard as you are in danger of losing your balance or control of the unit.
5. Try to control the cutting motion with the hip rather than placing the full workload on the arm and hands.
6. Take precautions to avoid wire, grass and dead, dry, long-stem weeds from wrapping around the head shaft. Such materials can stall the head and cause the clutch to slip, resulting in damage to the clutch system if repeated frequently.



**BALANCE UNIT:**



1. Put on the strap and attach the unit to strap.
2. Slide clamp up or down until unit balances with head just touching on the ground.

### Fuel Handling

**WARNING**



- Petrol is very flammable. Avoid smoking or bringing any flame or sparks near fuel.
- Wipe up all spills before starting the engine.
- Make sure to stop the engine and allow it cool before refueling the unit.
- Keep open flames away from the area where fuel is handled or stored.

**FB-BC-8642/8652 (2-Stroke):**

**IMPORTANT**

- Never use oil for 4 cycle engine use or water cooled 2-cycle engine.
- Never use "FUEL WITH NO OIL (PURE PETROL)".
- Never use fuel laced with water.
- Mixed fuels which have been left unused for a period of one month or more may clog the carburetor or result in the engine failing to operate properly. Put remained fuel into an air-tight container and keep it in the dark and cool room.
- Please ask for "mixed petrol for air-cooled 2-cycle engines" at your nearest gas station, or use fuel made by putting unleaded petrol for automobiles and air-cooled 2-cycle engine oil into a mixing container in accordance with the following ratios and then shaking to mix well.

## HOW TO MIX FUEL:



1. Measure out the quantities of petrol and oil to be mixed.
2. Put some of the petrol into the clean, approved fuel container supplied.
3. Pour in the oil and agitate well.
4. Be careful that, if the agitation is insufficient, there is an increased danger of early piston seizing due to abnormally lean mixture.

### Mixing ratios:

When using commercially available 2-cycle oil: **25:1**  
**(40 ml of oil for every 1 liter of petrol)**

## FB-BC4-8636 (4-Stroke):

- This engine should be lubricated by oil specially formulated for air-cooled 4-cycle petrol engine use. Use quality oil meant for air-cooled 4-cycle engine use.
- It is recommended to use pure petrol and 20W40 grade oil. If you use petrol with a lower octane value than prescribed, there is a danger that the engine temperature may rise and an engine problem such as piston seizing may consequently occur.
- These engines are certified to operate on unleaded petrol as they reduce the contamination of the air for the sake of your health and the environment.
- Poor quality petrol or oil may damage sealing rings, fuel lines or fuel tank of the engine.

## FUELING THE UNIT:

1. Untwist and remove the fuel cap. Rest the cap on a dustless place.
2. Pour fuel into the fuel tank to 80% of the full capacity.
3. Fasten the fuel cap securely and wipe up any fuel spillage around the unit.
4. Fill 60-80 ml oil into the oil tank. (in case of 4-stroke engine)

## WARNING

1. Select bare ground for fueling.
2. Move at least 10ft (3m) away from the fueling point before starting the engine.
3. Stop the engine before refueling the unit.
4. In the case of storing the product for a long period of time, clean the fuel tank after rendering it empty. Next, activate the engine and empty the carburetor of the composite fuel.

## Operation

### Starting the Engine:



#### WARNING

The cutting head will start rotating upon the engine starts.

1. Feed fuel into the fuel tank and tighten the cap securely.
2. Rest the unit on a flat, firm place. Keep the cutting head off the ground and clear of surrounding objects as it will start rotating upon starting of the engine.

OP1



3. Push the primer pump several times until overflow fuel flows out in the return tube.

OP2



4. Move the choke lever to the closed position.

Note: In the adjacent figure,

- (1) Choke lever
- (2) Closed position
- (3) Open position

OP3

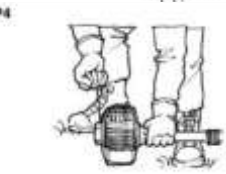


5. Set the ignition switch to the "start" position. While pulling the throttle lever, push the throttle set button, and release the throttle, then the throttle lever is into the "Start position."

Note: In the adjacent figure,

- (A) Stop position
- (B) Start position

OP4



6. While holding the unit firmly, pull out the starter rope quickly until engine fires.

### IMPORTANT

Avoid pulling the rope to its end or returning it by releasing the knob. Such actions can cause starter failures.

7. Move the choke lever to the open position (OP2). And pull out the starter rope quickly to restart engine. (OP4)
8. Allow the engine to warm up for several minutes before starting operation.

### NOTE

1. When restarting the engine immediately after stopping it, leave the choke open (OP2) and push the primer pump several times (OP4).
2. Over choking can make the engine hard to start due to excess fuel. When the engine failed to start after several attempts, open the choke and repeat pulling the rope, or remove the spark plug and dry it.

### Stopping the Engine:

1. Release the throttle lever and run the engine for a half minute.
2. Shift the ignition switch to the STOP position. (OP3)

### NOTE