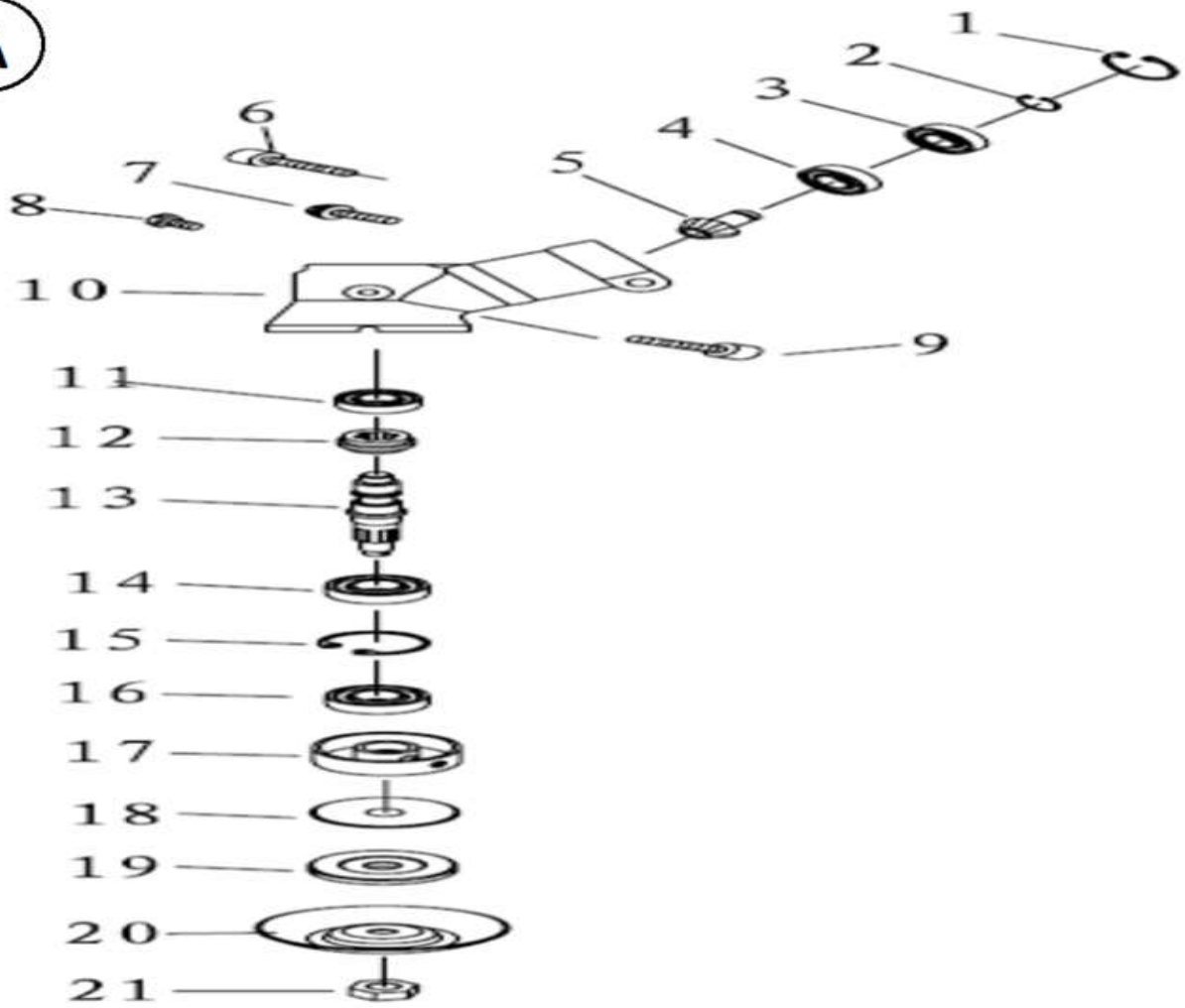


Page No 1			
PART NO	REF NO	PART NAME	QTY.
B-A	BG63.5	Gear Case Ass'y	1
B-A01	GB/T893.2	Stop Ring 28 (Inner)	1
B-A02	GB/T894. 1	Stop Ring 12 (Outer)	1
B-A03	GB/T276	Bearing 6001-2RS/P5	1
B-A04	GB/T276	Bearing 6001/P5	2
B-A05	BG63.5-2	Pinion	1
B-A06	GB/T70. 1+GB/T93+GB/T97	Screw M6 X 35 Allen	1
B-A07	GB/T70. 1 Screw	Screw M5 X 12 Allen	1
B-A08	GB/T70.1	Screw M5X8 Allen	4
B-A09	GB/T70. 1	Bolt M6X8 (Grease nipple)	1
B-A10	BG63. 5-1	Gear Case	1
B-A11	GB/T276	Bearing 6000/P5	1
B-A12	BG63. 5-3	Gear	1
B-A13	BG63. 5-4	Gear Shaft	1
B-A14	GB/T276	Bearing 6202-2RS/P5	1
B-A15	GB/T893. 2	Stop Ring 35 (Inner)	1
B-A16	BG63. 5. 1	Oil-seal 20X35X6	1
B-A17	BG63. 5-8	Holder A	1
B-A18	BG63. 5-5	Washer (Gear Box)	1
B-A19	BG63. 5-6	Holder B	1
B-A20	BG63. 5-7	Cover (Metal)	1
B-A21		NUT (Left Thread)	1
PART NO	REF NO	PART NAME	QTY.
B-B			
B-B01	BC36-8	Rubber Ringer	1
B-B02	BC36-6	HANDGRIP / Handle	1
B-B03	BC36. 4-2+GB93+GB97	Screw M5*25 Allen	4
B-B04	CG63. 4-4	CAP, UPPER	1
B-B05	CG63. 4-1	Clamp Ring	2
B-B06	CG63. 4-2	Linker (Handle)	2
B-B07	CG63. 4-3	Rubber (Handle Linker)	6
B-B08	CG63. 4-5	Cap, Lower	1

A



B

