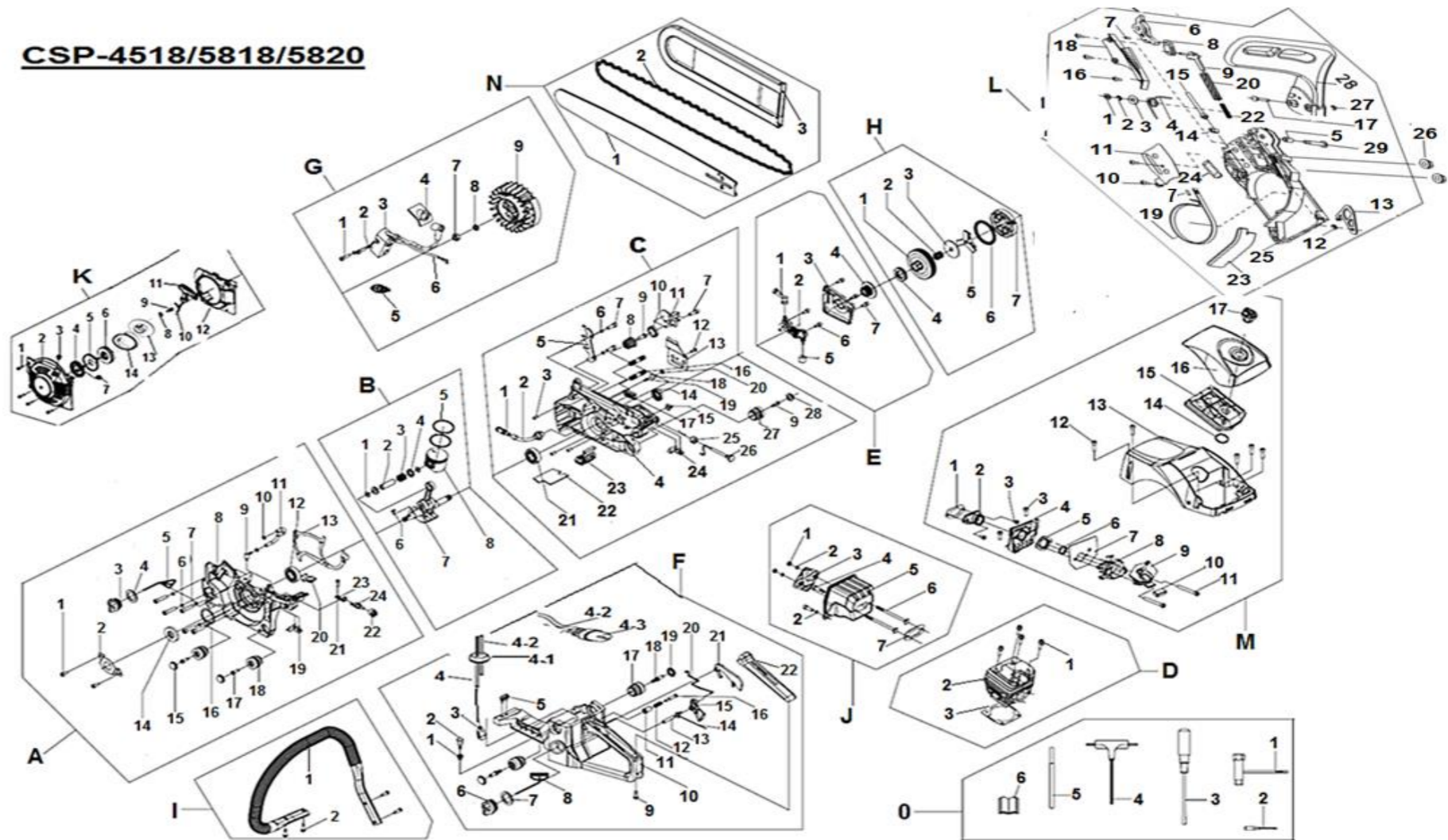


FB-CSP-4518,5818,5820

NO	KK - PART LIST	QTY
A	Left crankcase assembly	
A-1	Screw M4x8 (Allen)	2
A-2	Oil seal bracket	1
A-3	Oil tank cover	1
A-4	Washer 30x20x2 (Oil Tank Cover)	1
A-5	N/A	1
A-6	Washer 5 (Spring)	5
A-7	Screw M5x30 (Allen)	5
A-8	Left crankcase	1
A-9	Suction Jet	1
A-10	Circlip (Suction jet)	2
A-11	Suction Tupe	1
A-12	Bearing 6202	1
A-13	Gasket Crankcase	1
A-14	Oil Seal 15x35x4.5 (Big)	1
A-15	Dust Cover(Shock Seat)	2
A-16	Stop ring 35 (Inner)	1
A-17	Screw ST5x16	2
A-18	Shock seat (Crankcase)	2
A-19	Left shock absorb block	1
A-20	LH adjust sheath 2	1
A-21	Screw M5x8 (Allen)	1
A-22	Switch sheath	1
A-23	Ground Strip	1
A-24	Switch On/Off	1
B	Crank connection rod piston assembly	
B-1	Circlip Piston Pin	2
B-2	Piston pin	1
B-3	Needle bearing K11x15x12.5(Piston Pin)	1
B-4	Needle bearing retainer ring	2
B-5	Piston ring φ45	2
B-6	Semi-circle key 3x3.7x10	1
B-7	Crankshaft assembly	1
B-8	Piston φ45	1
C	Right crankcase assembly	
C-1	Oil filter	1
C-2	Oil pipe	1
C-3	Location pin φ5x10	3
C-4	Right crankcase	1
C-5	Dental Plate	1
C-6	Washer 5 Spring	2
C-7	Screw M5x14 (Allen)	3
C-8	Conical Spring	1
C-9	Screw ST5x14	2
C-10	Spring seat	1
C-11	Chain block	1



C-12	Screw M4x8 (Allen)	1
C-13	Bar backing plate	1
C-14	oil seal 15x28x4.5 (Small)	1
C-15	Small shock absorb block	1
C-16	Stud Blot M8X40	2
C-17	Chain Guide Block	1
C-18	Venting mouth sponge	1
C-19	Venting mouth	1
C-20	Venting mouth retainer ring ϕ 11	1
C-21	Ball bearing 6202	1
C-22	Dustproof Gasket	1
C-23	Dustproof rubber plate	1
C-24	Right shock absorb block	1
C-25	Chock Rod Seat	1
C-26	Chock Rod	1
C-27	Shock seat (Crankcase)	1
C-28	Dust Cover(Shock Seat)	1
D	Cylinder assembly	
D-1	Screw M5x20 (Allen)	4
D-2	Cylinder ϕ 45	1
D-3	Cylinder gasket	1
E	Lubricate system	
E-1	oil output pipe	1
E-2	Oil pump	1
E-3	Oil pump Cover Plate	1
E-4	Worm	1
E-5	Sponge (Oil Pump)	1
E-6	Screw M4x14 (Allen)	2
E-7	Screw M4x8 (Allen)	3
F	Base (oil bottle)assembly	
F-1	Blancer Groment	1
F-2	Blancer Assy	1
F-3	Petrol Filter	1
F-4	Fuel pipe	1
F-4-1	Fuel pipe Grommet	
F-4-2	Fuel Return Pipe	
F-4-3	Primer Bulb	
F-5	Shock Rubber	1
F-6	Petrol Tank Lid	1
F-7	Gasket (Petrol Tank Lid)	1
F-8	Buy # 6	1
F-9	Screw ST5x20	1
F-10	Base	1
F-11	N/A	1
F-12	N/A	1
F-13	Throttle trigger axle ϕ 6x30	1
F-14	Trigger spring	1
F-15	Throttle trigger	1
F-16	N/A	1
F-17	Base shock absorb rubber sheath	2

F-18	Screw M5X12 (Shock absorb rubber)	2
F-19	Dust Cover(Shock Absorb Rubber)	2
F-20	Throttle Rod	1
F-21	Trigger control arm	1
F-22	Rear hand grip cover	1
G	Ignition system	
G-1	Screw M5x20 (Allen)	2
G-2	Washer 5 Spring	2
G-3	Ignition coil	1
G-4	Dust Cover(Spark plug)	1
G-5	Spark plug	1
G-6	Stop Switch Wire	1
G-7	Nut M8	
G-8	Washer 8 Spring	1
G-9	Flywheel	1
H	Clutch assembly	1
H-1	Clutch Drum	1
H-2	Needle bearing K12X15X14.5 (Clutch Drum)	1
H-3	Clutch washer $\phi 42 \times \phi 10 \times 1.5$	1
H-4	Sprocket	1
H-5	Retainer (Clutch)	1
H-6	Clutch spring	1
H-7	Clutch Shoe	3
I	Front handle Assy	
I-1	Front handle	
I-2	Screw ST5x14	1
J	Muffle assembly	4
J-1	Nut M5	2
J-2	Washer 5 Spring	4
J-3	Muffler Cover	1
J-4	Screw M5x12 (Allen)	2
J-5	Muffler assembly	1
J-6	Screw M5x84	2
J-7	Muffler washer	1
K	start assembly	
K-1	Screw M5x14 (Allen)	4
K-2	start cover	1
K-3	N/A	1
K-4	Recoil Spring	1
K-5	Recoil Spring Plate	1
K-6	Start rope Reel	1
K-7	LH adjust sheath 1 (rubber washer)	1
K-8	Washer 5x15x1 (Ratchet)	1
K-9	Screw ST5x16 (Ratchet)	1
K-10	Start rope	1
K-11	Start handle	1
K-12	Air director	1
K-13	Ratchet Starter	
K-14	Ratchet Spring	
L	Brake assembly	

L-1	Rubber ring	1
L-2	Retainer ring $\phi 5 \times \phi 10 \times 0.8$	1
L-3	Washer 6.5x18x1.5	1
L-4	Brake Torsion Rod Spring	1
L-5	Pin bush $\phi 6 \times \phi 8 \times 13$	
L-6	Main lever	
L-7	Lever pin $\phi 3 \times 8$	
L-8	Connect pole	
L-9	Brake Control Rod	
L-10	Screw ST4x8	
L-11	Chain adjuster plate	
L-12	Retainer ring $\phi 4 \times \phi 9 \times 0.8$	
L-13	Limit valve plate	
L-14	Tansion Block	
L-15	Tansion Screw	
L-16	Screw ST4x10	
L-17	Limit valve plate pin	
L-18	Brake spring plate	
L-19	Brake Strap	
L-20	Brake spring (Big)	
L-21	N/A	
L-22	Brake spring (Small)	
L-23	Dust absorb rubber plate	
L-24	Chain block	
L-25	Sprocket cover	
L-26	Nut Flanged M8	
L-27	Retainer ring $\phi 3 \times \phi 7 \times 0.6$	
L-28	Front Damper	
L-29	Brake plate Pin	
M	Air intake assembly	1
M-1	Air intake pipe gasket	1
M-2	Air intake pipe	1
M-3	Screw M5x12 (Allen)	4
M-4	Air intake Support	1
M-5	Air intake pipe flange	1
M-6	Hold Coil	1
M-7	Carburetor gasket	1
M-8	Carburetor assembly	1
M-9	Air Intake Socket	1
M-10	Air Intake Socket Cushion	1
M-11	Screw M5x50 (Allen)	2
M-12	Screw M5x14 (Allen)	5
M-13	Cylinder Upper Cover	1
M-14	Rubber washer $\phi 27 \times \phi 22 \times 1$ (Air Filter)	1
M-15	Air filter	1
M-16	Air filter cover	1
M-17	Ail filter Lock Nut	1
N	Working system	1
N-1	Bar 18 "	1

N-2	Chain 18 " .325 "	1
N-3	Bar sheath	1