

BODY		KK-IC-300/400 (DIESEL)		
Normal Handle Assy		UNIT - 1		
Sl. No.	Code	Name	Qty	Part No
1	0100530016	Governor switch assy (diesel oil)	1	G/B 1-01
2	0101200001	Reverse gear rope	1	G/B 1-02
3	011301002	Pin lock Φ2×20	4	G/B 1-03
4	011801003	Pin7×22	2	G/B 1-04
5	0100570002	Pin10×22	2	G/B 1-05
6	0101080003	Reverse gear handle	1	G/B 1-06
7	0101090001	Lock-button of reverse gear	1	G/B 1-07
8	0100180004	Lock-button spring of reverse gear	1	G/B 1-08
9	0100430013AX	Handle Bar Assy	1	G/B 1-09
10	0100500001AB	Clutch gear handle	1	G/B 1-10
11	0100510003	Armrest rubber handle	2	G/B 1-11
12	0100540002	Clutch rope	1	G/B 1-12
13	010110000	Halt lock line	1	G/B 1-13
14	01000019AL	Halt handle seat	1	G/B 1-14
15	011201002	R pin Φ2x9x38	1	G/B 1-15
16	0100450002	Shift lever	1	G/B 1-16
17	0100470002	Shift pouches	1	G/B 1-17
18	0100560003	Lifting the handle (T-shaped locking handle)	1	G/B 1-18
19	010503006	Flat washer 20	1	G/B 1-19
20	010601006	Spring washers 20	1	G/B 1-20
21	010406010	Bolt M16 x 150	1	G/B 1-21
22	0101030002	Chainring board	1	G/B 1-22
23	010104009	Bolt M10 × 45	4	G/B 1-23
24	010503001	Flat washer 10	8	G/B 1-24
25	010601001	Spring washers 10	4	G/B 1-25
26	010401001	Hex nut M10	4	G/B 1-26
27	010503002	Flat washer 16	1	G/B 1-27
28	010601002	Spring washers 16	1	G/B 1-28
29	0100560001	Lifting handle (high and low lift handle)	1	G/B 1-29
30	01000007AE	Pouches	1	G/B 1-30
31	0100440003AA	Armrest seat	1	G/B 1-31
32	0101360001	those parts are for HSD1G-105E&135E	1	N/A
33	01000082		1	N/A
34	01000064		1	N/A
35	0101380003		1	N/A
36	GB/T 62		2	N/A
37	HSD1G135.510101-2		1	N/A
38	HSD1G135.510101-4		1	N/A
39	HSD1G135.510101-3		2	N/A
40	0101940001		1	N/A
41	0101930001		1	N/A
42	0101920001		1	N/A
43	0101910002AX		1	N/A
44	0102190001		1	N/A

45	0101370002		1	N/A
46	0101330003AA		1	N/A
<b>Gear Box Assy UNIT - 2</b>				
Sl. No.	Code	Name	Qty	Part No
1	010104006	Hex bolt M8 x 20	2	G/B 2-01
2	012002001	External tooth lock washer 8	1	G/B 2-02
3	0100110014	Flat washer $\varnothing 15 \times \varnothing 25 \times 2.5$	1	G/B 2-03
4	011401003	Bearing 6202	1	G/B 2-04
5	0100910001	Clutch core	1	G/B 2-05
6		The first shaft assembly	1	G/B 2-06
7		The second shaft assembly	1	G/B 2-07
8		The third shaft assembly	1	G/B 2-08
9	0100960001	Shift arm	1	G/B 2-09
10	011301003	Pin lock 1.6x20	2	G/B 2-10
11	011801007	Pin6x40	1	G/B 2-11
12	0100100008	Sleeve $\varnothing 16 \times \varnothing 20 \times 35.5$	1	G/B 2-12
13	011501005	O-ring 11.2 x 2.65	2	G/B 2-13
14	0100170003	Fork shaft	1	G/B 2-14
15	0100160002	Fork(Gear Shifter)	1	G/B 2-15
16	010704005	Shaft end retaining ring	1	G/B 2-16
17	0100010003	Gearbox	1	G/B 2-17
18	0100890001	Oil dipstick	1	G/B 2-18
19	010401002	Hex nut M8	3	G/B 2-19
20	0100880001	Cable seat	1	G/B 2-20
21	011401008	Bearing 6204	1	G/B 2-21
22	011501003	O-ring 45 x 1.8	1	G/B 2-22
23	010090000	Gland	1	G/B 2-23
24	0100100007	Sleeve $\varnothing 20 \times \varnothing 25 \times 12.5$	1	G/B 2-24
25	011601006	Seal 25 x 40 x 7	1	G/B 2-25
26	012001001	Washers with 20	1	G/B 2-26
27	010419001	Round nut M20 x 1.5	1	G/B 2-27
28	0100110035	Flat washer 6	4	G/B 2-28
29	010601004	Spring washer 6	4	G/B 2-29
30	010204003	Screw M6 x 20	4	G/B 2-30
31	0102030001	Flat key bushing	1	G/B 2-31
32	010801001	Flat key 6 x 6 x 20	1	G/B 2-32
33	0100110035	Flat washer $\varnothing 8 \times \varnothing 30 \times 2.5$	1	G/B 2-33
34	010070000	Protective housing of main shaft	1	G/B 2-34
35	010104001	Hexagonal bolts M10 x 25	1	G/B 2-35
36	010601001	Spring washers 10	5	G/B 2-36
37	010503001	Flat washer 10	5	G/B 2-37
38	011901001	Cylindrical pin $\varnothing 5 \times 10$	2	G/B 2-38
39	0100110011	Flat washer12	1	G/B 2-39
40	010601005	Spring washers 12	1	G/B 2-40
41	010106001	Hexagonal bolts M12x1.25x25	1	G/B 2-41
42	0100880001	Cable seat	1	G/B 2-42
43	0100160003	Fork	1	G/B 2-43
44	012201001	Threaded cylindrical pin	1	G/B 2-44



29	10110002	Bolt M12 × 1.25 × 12	1	G/B 3-29
<b>Active Axes Assy. (25 Gears) UNIT - 4</b>				
Sl. No.	Code	Name	Qty	Part No
1	010706001	Steel wire clip of axes Φ25×2	2	G/B 4-01
2	100060002	Spindle double tooth	1	G/B 4-02
3	100050009	Main Shaft	1	G/B 4-03
4	11701002	Steel ball Φ6	4	G/B 4-04
5	10601004	Orientation spring Φ6×0.8×23	2	G/B 4-05
6	11501004	Shift gear	2	G/B 4-06
<b>COUNTER SHAFT UNIT- 5</b>				
Sl. No.	Code	Name	Qty	Part No
1	11501006	O-ring 25 × 1.8	1	G/B 5-01
2	100080003	Countershaft	1	G/B 5-02
3	11407001	Thrust ball bearing 51104	1	G/B 5-03
4	100100009	Countershaft bushings	1	G/B 5-04
5	100060003	Double-tooth countershaft	1	G/B 5-05
6	11406001	Needle Roller Bearings HK182420	2	G/B 5-06
7	10801001	Flat key 6 × 6 × 20	1	G/B 5-07
8	100940003	Active bevel	As required	G/B 5-08
9	100110003	Wear adjustment shims Φ10 × Φ18 × 0.3	As required	G/B 5-09
	100110004	Wear adjustment shims Φ10 × Φ18 × 0.5		
	100110005	Wear adjustment shims Φ10 × Φ18 × 1		
10	10420002	Hexagon slotted nut M10	1	G/B 5-10
11	11301001	Cotter pin 2.5 × 25	1	G/B 5-11
<b>Reverse Gear Axes Assy UNIT - 6</b>				
Sl. No.	Code	Name	Qty	Part No
1	10407008	Six-angle nut M12	1	G/B 6-01
2	11301001	Cotter pin 2.5 × 25	1	G/B 6-02
3	10501001	Flat gasket Φ12	2	G/B 6-03
4	0100980001	Limit tube of reverse gear	1	G/B 6-04
5	0100180003	Reverse gear spring Φ20×Φ1.65×55	1	G/B 6-05
6	0100110006	Spring seat of reverse gear	1	G/B 6-06
7	0100060004	Reverse gear wheel	1	G/B 6-07
8	0100990001	Reverse gear pulling plate	1	G/B 6-08
9	0100120002	Reverse gear axes	1	G/B 6-09
10	011501007	O-ring 18 × 1.8	1	G/B 6-10
<b>Clutch Assy UNIT - 7</b>				
Sl. No.	Code	Name	Qty	Part No
1	0100920001	Outer cover assy of clutch	1	G/B 7-01
2	0100910001	Clutch core assy	1	G/B 7-02


**Front fender                      UNIT - 8**

Sl. No.	Code	Name	Qty	Part No
1	0100022AB	Bumper	1	G/B 8-01
2	010401001	Hex nut M10	7	G/B 8-02
3	010601001	Spring washers 10	7	G/B 8-03
4	010503001	Flat gasket Φ10	14	G/B 8-04
5	0100300004	Power support frame	1	G/B 8-05
6	010104007	Hex bolts M10 × 40	3	G/B 8-06
7	010104009	Hex bolts M10 × 45	4	G/B 8-07


**Deep Resistance                      UNIT - 9**

Sl. No.	Code	Name	Qty	Part No
1	010401001	Hex nut M10	5	G/B 9-01
2	010601001	Spring washers 10	3	G/B 9-02
3	010503001	Flat gasket Φ10	6	G/B 9-03
4	010104012	Hex bolts M10 ×50	3	G/B 9-04
5	0100420003	Pin of pulley cosrp	1	G/B 9-05
6	0100400003	Pulley cosrp	1	G/B 9-06
7	010104010	Hex bolts M10 ×35	2	G/B 9-07
8	0100390003AB	Welded part of hinge cosrp	1	G/B 9-08
9	011201001	R pinΦ3×20×60	1	G/B 9-09
10	011201002	R pinΦ2×9×38	1	G/B 9-10
11	0100410001AB	Deep furrowing resistance part	1	G/B 9-11
12	011801001	pin10×40	1	G/B 9-12


**Fender                                      UNIT - 10**

Sl. No.	Code	Name	Qty	Part No
1	0101250008AA	Front fender bracket- (RIGHT)	1	G/B 10-01
2	0101250007AA	Front fender bracket -(LEFT)	1	G/B 10-02
3	010503003	Flat gasket Φ8	4	G/B 10-03
4	010601003	Spring gasket Φ8	4	G/B 10-04
5	010104005	Hex bolt M8 x 20	4	G/B 10-05
6	0100350003AA	Right fender-(2)	1	G/B 10-06
7	0101240001AA	Layering	2	G/B 10-07
8	0100350002AA	Right fender-(1)	1	G/B 10-08
9	010109010	Hexagon flange bolts M6 x 16	14	G/B 10-09
10	0100380008	Pad of paper Φ6	14	G/B 10-10
11	010406003	Hexagon flange nut M6	14	G/B 10-11

12	0100370010AA	Fender rear bracket	1	G/B 10-12
13	010104001	Hexagonal bolts M10 × 25	2	G/B 10-13
14	010503001	Flat gasket Φ10	4	G/B 10-14
15	010601001	Spring washers 10	2	G/B 10-15
16	010401001	Hex nut M10	2	G/B 10-16
17	0100360002AA	Left fender-(1)	1	G/B 10-17
18	0100360003AA	Left fender-(2)	1	G/B 10-18

**Wheel Assy                      UNIT - 11**

Sl. No.	Code	Name	Qty	Part No
1	010401001	Hex nut M10	26	G/B 11-01
2	010601001	Spring washers 10	26	G/B 11-02
3	010503001	Flat gasket Φ10	26	G/B 11-03
4	F2.F2001006AA	Wheel axle	2	G/B 11-04
5		Inner spoke	2	G/B 11-05
6		Inner tire	2	G/B 11-06
7		Valve cap	2	G/B 11-07
8		Outer spoke	2	G/B 11-08
9		Outer tire	2	G/B 11-09
10	010104001	Hexagonal bolts M10 × 25	8	G/B 11-10
11	010104003	Hexagonal bolts M10 × 20	18	G/B 11-11

ENG

KK-IC-300/400 (DIESEL)

## CYLINDER BLOCK ASSEMBLY

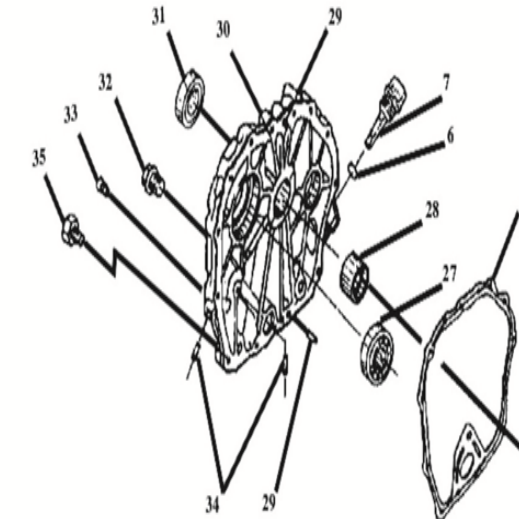
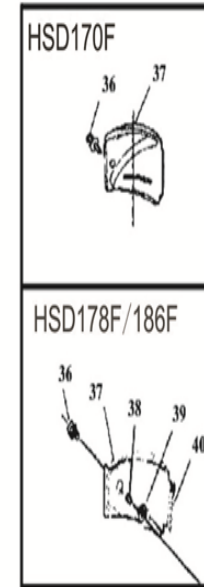
## UNIT - 1

S.NO	DESCRIPTION		QUANTITY		Part No
	IC-300D	IC-400D	IC-300D	IC-400D	
1	Drain Plug	Drain Plug	1	1	E1-01
2	Oil Piug Seal Assem	Oil Piug Seal Assem	1	1	E1-02
3	Oil Seal SG30*45*8	Oil Seal SG35*50*8	1	1	E1-03
4	Cylinder Block	Cylinder Block	1	1	E1-04
5	Fuel Controller Assem	Fuel Controller Assem	1	1	E1-05
6	O-Ring $\phi 24 \times \phi 2.4$	O-Ring $\phi 24 \times \phi 2.4$	1	1	E1-06
7	Oil Filler Cap	Oil Filler Cap	2	2	E1-07
8	Needle Bearing HK081410	Needle Bearing HK081410	2	2	E1-08
9	Stud Plate(Short)	Stud Plate(Short)	2	2	E1-09
10	Stud Plate(Long)	Stud Plate(Long)	1	1	E1-10
11	Fuel Injection Pump Gasket 0.1mm	Fuel Injection Pump Gasket 0.1mm	2	2	E1-11
	Fuel Injection Pump Gasket 0.2mm	Fuel Injection Pump Gasket 0.2mm	1	1	E1-11
	Fuel Injection Pump Gasket 0.3mm	Fuel Injection Pump Gasket 0.3mm	1	1	E1-11
	Fuel Injection Pump Gasket 0.4mm	Fuel Injection Pump Gasket 0.4mm	1	1	E1-11
	Fuel Injection Pump Gasket 0.5mm	Fuel Injection Pump Gasket 0.5mm	1	1	E1-11
12	Seal Gasket	Seal Gasket	1	1	E1-12
13	Seal Plate	Seal Plate	1	1	E1-13
14	Nut M6	Nut M6	1	1	E1-14
15	Retainer	Retainer	3	3	E1-15
16	Spring Washer-8	Spring Washer-8			E1-16
17	Bolt M8*14	Bolt M8*14	1	1	E1-17
18	Needle Bearing HK1512	Needle Bearing HK1512	1	1	E1-18
19	Cylinder Head Stud(Short)	Cylinder Head Stud(Short)	1	1	E1-19
20	Cylinder Head Washer	Cylinder Head Washer	2	2	E1-20
21	Cylinder Head Nut(Short)	Cylinder Head Nut(Short)	4	4	E1-21
22	Cylinder Head Gasket 0.1mm	Cylinder Head Gasket 0.1mm	2	2	E1-22
	Cylinder Head Gasket 0.2mm	Cylinder Head Gasket 0.2mm	1	1	E1-22
	Cylinder Head Gasket 0.3mm	Cylinder Head Gasket 0.3mm	1	1	E1-22
	Cylinder Head Gasket 0.4mm	Cylinder Head Gasket 0.4mm	1	1	E1-22
	Cylinder Head Gasket 0.5mm	Cylinder Head Gasket 0.5mm	1	1	E1-22
23	Cylinder Head Nut(Long)	Cylinder Head Nut(Long)	1	1	E1-23
24	Cylinder Head Stud(Long)	Cylinder Head Stud(Long)	2	2	E1-24
25	Ring	Ring(O'RING)	2	2	E1-25
26	Crank Case Gasket	Crank Case Gasket	1	1	E1-26
27	Ball Bearing 6206	Ball Bearing 6207	1	1	E1-27
28	Main Bearing	Main Bearing	1	1	E1-28
29	Pin 8*12	Pin 8*12	1	1	E1-29
30	Crank Case Cover	Crank Case Cover	1	1	E1-30
31	Oil Seal SG30*45*10	Oil Seal SG35*50*10	2	2	E1-31
32	Bolt M8*33.5	Bolt M8*33.5	15	16	E1-32
33	Plug	Plug	1	1	E1-33
34	Pluger $\phi 8$	Pluger $\phi 8$	3	3	E1-34
35	Bolt M6*25	Bolt M6*25			E1-35
36	Bolt M6*14	Bolt M6*18	1	1	E1-36
37	Air Gover	Air Gover	1	1	E1-37
38	Air Gover Collar	Air Gover Collar	1	1	E1-38

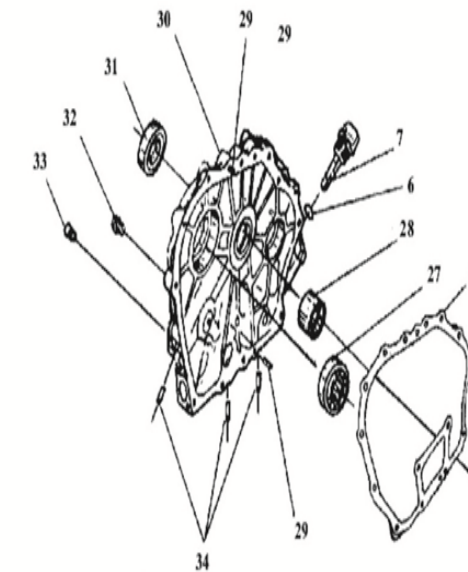
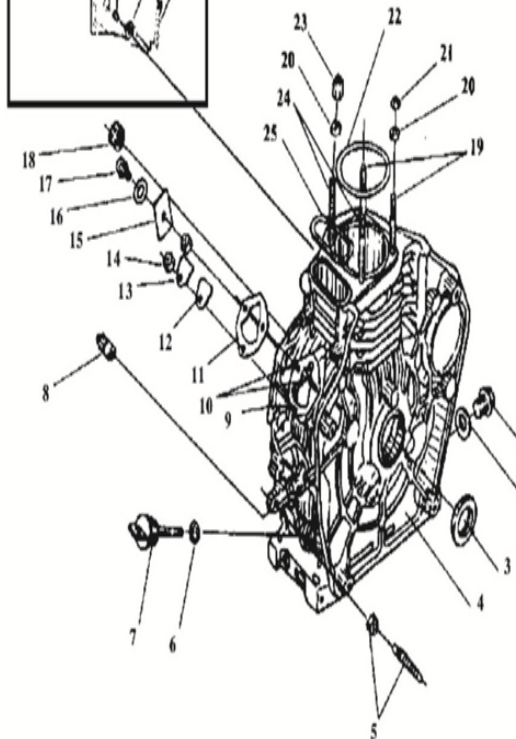
HSD170F/178F/186F

## UNIT - 1

HSD170F

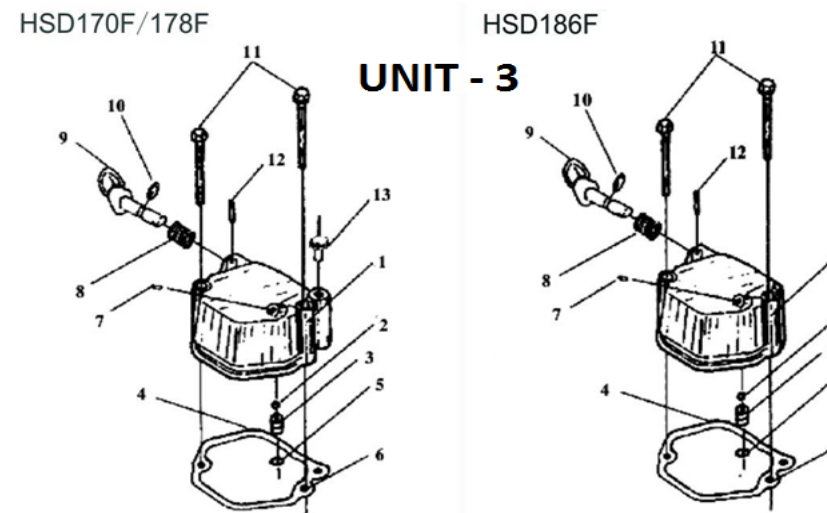
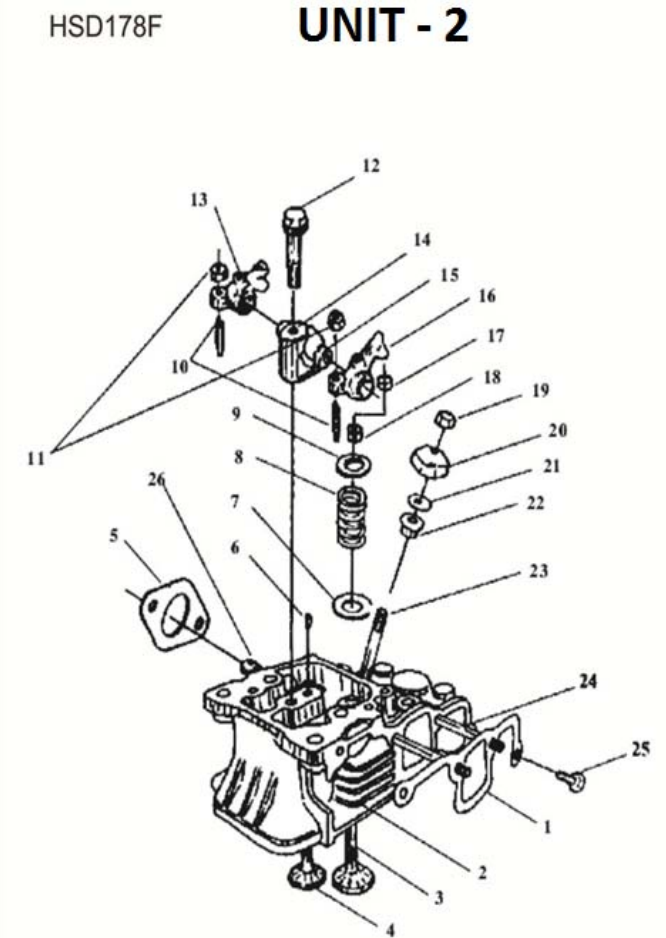
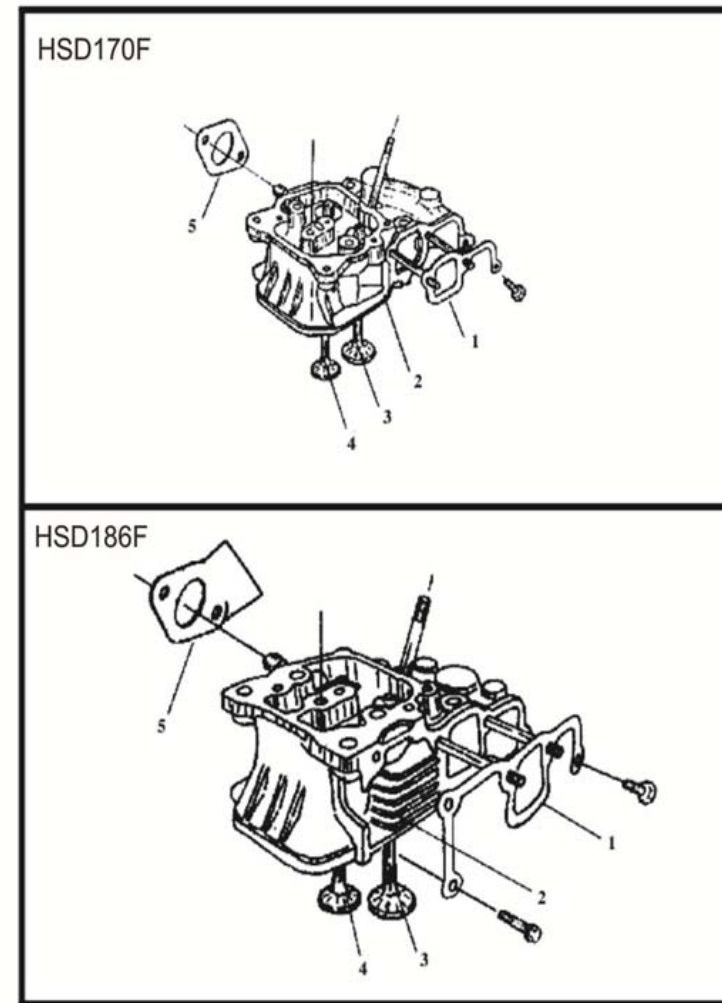


HSD178F/186F



39	Shock Absorber (Air Gover)	Shock Absorber (Air Gover)	1	1	E1-39
40	Shock Absorber Seat	Shock Absorber Seat	1	1	E1-40
<b>CYLINDER ASSEMBLY</b>		<b>Unit - 2</b>			
S.NO	DESCRIPTION		QUANTITY		Part No
	IC-300D	IC-400D	IC-300D	IC-400D	
1	Air intake Gasket	Air intake Gasket	1	1	E2-01
2	Cylinder Head	Cylinder Head	1	1	E2-02
3	Intake Valve	Intake Valve	1	1	E2-03
4	Exhaust Valve	Exhaust Valve	1	1	E2-04
5	Silencer Gasket	Silencer Gasket	1	1	E2-05
6	Pin $\phi 4 \times 8$	Pin $\phi 4 \times 8$	1	1	E2-06
7	Valve Spring Washer	Valve Spring Washer	2	2	E2-07
8	Valve Spring	Valve Spring	2	2	E2-08
9	Spring Retainer	Spring Retainer	2	2	E2-09
10	Valve Screw	Valve Screw	2	2	E2-10
11	Nut M6	Nut M6 (Valve Screw)	2	2	E2-11
12	Rocker Arm Bolt	Rocker Arm Bolt	1	1	E2-12
13	Exhaust Valve Rocker Arm	Exhaust Valve Rocker Arm	1	1	E2-13
14	Rocker Arm Support	Rocker Arm Support	1	1	E2-14
15	Rocker Arm Shaft	Rocker Arm Shaft	1	1	E2-15
16	Intake Valve Rocker Arm	Intake Valve Rocker Arm	1	1	E2-16
17	Valve Adjusting Plate	Valve Adjusting Plate	2	2	E2-17
18	Cotter (Valve Lock)	Cotter (Valve Lock)	4	4	E2-18
19	Nut M6	Nut M6	2	2	E2-19
20	Nozzle Retainer	Nozzle Retainer	1	1	E2-20
21	Spacer Washer $\phi 10 \times \phi 16 \times 0.2\text{mm}$	Spacer Washer $\phi 10 \times \phi 16 \times 0.2\text{mm}$	1	1	E2-21
	Spacer Washer $\phi 10 \times \phi 16 \times 0.3\text{mm}$	Spacer Washer $\phi 10 \times \phi 16 \times 0.3\text{mm}$	1	1	E2-21
	Spacer Washer $\phi 10 \times \phi 16 \times 0.4\text{mm}$	Spacer Washer $\phi 10 \times \phi 16 \times 0.4\text{mm}$	1	1	E2-21
	Spacer Washer $\phi 10 \times \phi 16 \times 0.5\text{mm}$	Spacer Washer $\phi 10 \times \phi 16 \times 0.5\text{mm}$	1	1	E2-21
22	Spacer	Spacer	1	1	E2-22
23	Stud AM6*50	Stud AM6*50	2	2	E2-23
24	Stud AM6*72	Stud AM6*92	2	2	E2-24
25	Bolt M6*25	Bolt M6*25	2	3	E2-25
26	Stud AM8*20	Stud AM8*20	2	2	E2-26

<b>CYLINDER HEAD BONNET ASSEMBLY</b>		<b>UNIT - 3</b>			
S.NO	DESCRIPTION		QUANTITY		Part No
	IC-300D	IC-400D	IC-300D	IC-400D	
1	Cylinder Head Bonnet	Cylinder Head Bonnet	1	1	E3-01
2	Ball	Ball	1	1	E3-02
3	Breather Assem	Breather Assem	1	1	E3-03
4	Pin	Pin	1	1	E3-04
5	O-Ring $\phi 12 \times \phi 1.9$	O-Ring $\phi 12 \times \phi 1.9$	1	1	E3-05
6	Bonnet Gasket	Bonnet Gasket	1	1	E3-06
7	Plunger $\phi 8 \times 10$	Plunger $\phi 8 \times 10$	1	1	E3-07
8	Decompression Spring	Decompression Spring	1	1	E3-08
9	Decompression Shaft Assem	Decompression Shaft Assem	1	1	E3-09
10	O-Ring $\phi 10 \times \phi 1.9$	O-Ring $\phi 10 \times \phi 1.9$	1	1	E3-10
11	Bolt N6*55	Bolt M6*70	2	2	E3-11
12	Pin $\phi 3 \times 16$	Pin $\phi 3 \times 16$	1	1	E3-12
13	Plunger	Plunger	1	N/A	E3-13





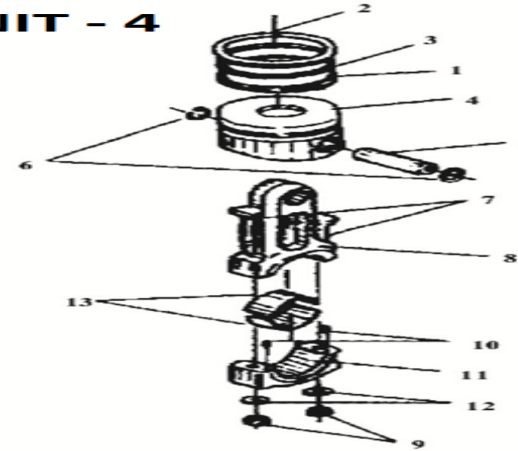
**PISTON&CONNECTING ROD ASSEMBLY**

**UNIT-4**

S.NO	DESCRIPTION		QUANTITY		Part No
	IC-300D	IC-400D	IC-300D	IC-400D	
1	Piston Ring Set	Piston Ring Set	1	1	E4-01
2					E4-02
3					E4-03
4	Piston	Piston	1	1	E4-04
5	Piston Pin	Piston Pin	1	1	E4-05
6	Washer 21 (Circlip Piston)	Washer 23 (Circlip Piston)	1	1	E4-06
7	Connacting Rod Body	Connacting Rod Assy	1	1	E4-07
8	Rod Nut	Rod Nut	2	2	E4-08
9	Rod Bolt Nut	Rod Bolt Nut	2	2	E4-09
10	Pin φ3*10	Pin φ3*10	N/A	N/A	N/A
11	Crank Pin Box	Crank Pin Box	N/A	N/A	N/A
12	Rod Bolt Washer	Rod Bolt Washer	2	2	E4-12
13	Crank Pin Bearing	Crank Pin Bearing	2	2	E4-13

HSD170F/178F/186F

**UNIT - 4**



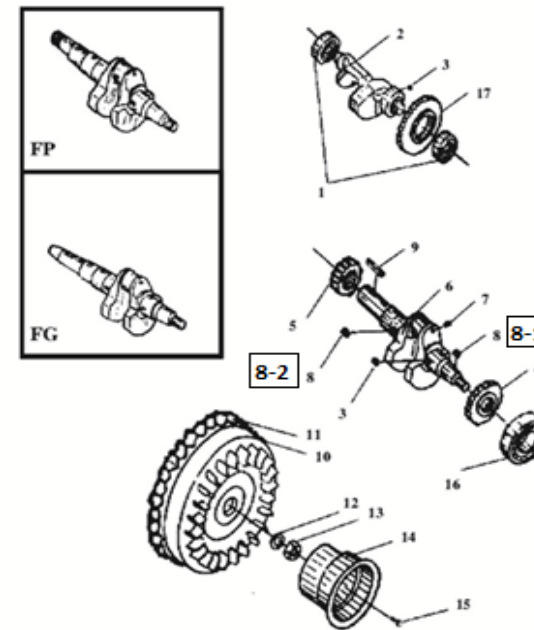
**CRANK SHAFT & FLYWHEEL ASSEMBLY**

**UNIT-5**

S.NO	DESCRIPTION		QUANTITY		Part No
	IC-300D	IC-400D	IC-300D	IC-400D	
1	Ball Bearing 6202	Ball Bearing 6203	2	2	E5-01
2	Balancer Shaft	Balancer Shaft	1	1	E5-02
3	Key 5*7	Key 5*7	2	2	E5-03
4	Balancer Gear	Balancer Gear	1	1	E5-04
5	Crank Shaft Timing Gear	Crank Shaft Timing Gear	1	1	E5-05
6	Grank Shaft	Grank Shaft	1	1	E5-06
7	PlungerSφ6	PlungerSφ6	1	1	E5-07
8.01	Key5*12	Key5*14	1	1	E5-08
8.02	Key5*12	Key5*12	1	1	E5-08
9	Key	Key	1	1	E5-09
10	Fly Wheel	Fly Wheel	1	1	E5-10
11	Fly Wheel Gear	Fly Wheel Gear	N/A	N/A	E5-11
12	Fly Wheel Nut Washer	Fly Wheel Nut Washer	1	1	E5-12
13	Fly Wheel Nut	Fly Wheel Nut	1	1	E5-13
14	Starter Pulley	Starter Pulley	1	1	E5-14
15	Bolt M6*12	Bolt M6*12	3	4	E5-15
16	Ball Bearing 6307	Ball Bearing 6308	1	1	E5-16
17	Balancer Gear	Balancer Gear	1	1	E5-17

HSD170F/178F/186F

**UNIT - 5**



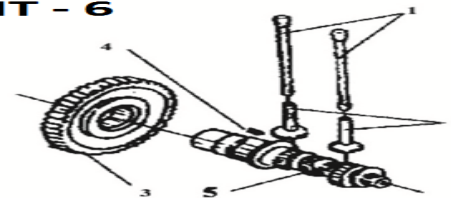
**CANSHAFT ASSEMBLY**

**UNIT-6**

S.NO	DESCRIPTION		QUANTITY		Part No
	IC-300D	IC-400D	IC-300D	IC-400D	
1	Valve Rod Assem	Valve Rod Assem	2	2	E6-01
2	Valve Tappet	Valve Tappet	2	2	E6-02
3	Camshaft Tming Gear	Camshaft Tming Gear	1	1	E6-03
4	Key 4*12	Key 5*14	1	1	E6-04
5	Camshaft	Camshaft	1	1	E6-05

HSD170F/178F/186F

**UNIT - 6**



**AIR CLEANER ASSEMBLY**

**UNIT-7**

S.NO	DESCRIPTION		QUANTITY		Part No
	IC-300D	IC-400D	IC-300D	IC-400D	
1	Air Cleaner Gasket	Air Cleaner Gasket	1	1	E7-01
2	Intake Pipe	Intake Pipe	1	1	E7-02

3	Air Cleaner Bottom Casem Assem	Air Cleaner Bottom Casem Assem	1	1	E7-03
4	Shock Absorber Washer II	Shock Absorber Washer II	1	1	E7-04
5	Air Cleaner Element Bolt	Air Cleaner Element Bolt	1	1	E7-05
6	Nut6	Nut6	1	1	E7-06
7	Air Cleaner Element Assem	Air Cleaner Element Assem	1	1	E7-07
8	Air Cleaner Element Shock Absorber	Air Cleaner Element Shock Absorber	1	1	E7-08
9	Shock Absorber Washer I	Shock Absorber Washer I	1	1	E7-09
10	Ring	Ring	1	1	E7-10
11	Air Cleaner Shock Absorber	Air Cleaner Shock Absorber	1	1	E7-11
12	Nut M6	Nut M8	1	1	E7-12
13	Washer 6	Washer 8	1	1	E7-13
14	Air Cleaner Cover Assem	Air Cleaner Cover Assem	1	1	E7-14

**SILENCER /MUFFLAR ASSEMBLY**

**UNIT-8**

S.NO	DESCRIPTION		QUANTITY		Part No
	IC-300D	IC-400D	IC-300D	IC-400D	
1	Case Assem	Case Assem(SILNCER)	1	1	E8-01
2	Bolt M6*8	Bolt M6*8	6	10	E8-02
3	Silencer Welded Assem	Silencer Welded Assem	1	1	E8-03
4	Washerφ8	Washerφ8	2	2	E8-04
5	Washerφ8	Washerφ8	2	2	E8-05
6	Nut M8	Nut M8	2	2	E8-06
7	Bolt M6*16	Bolt M8*16	2	2	E8-07

**LUBE OIL SYSTEM /Oil Pump Assy**

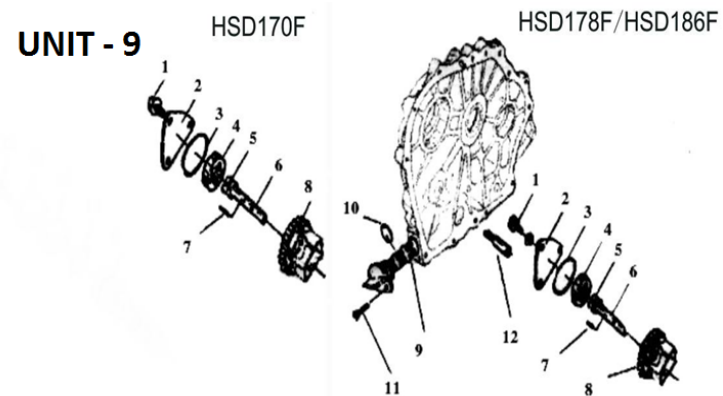
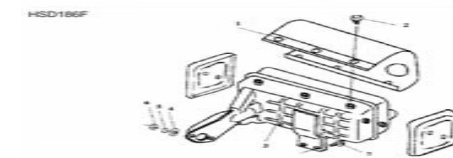
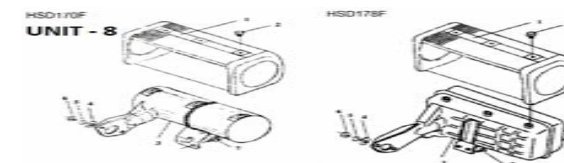
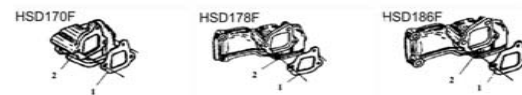
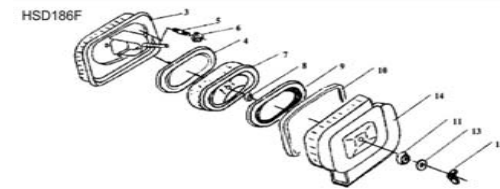
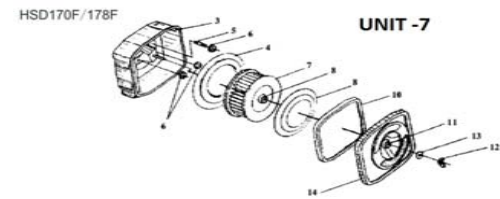
**UNIT-9**

S.NO	DESCRIPTION		QUANTITY		Part No
	IC-300D	IC-400D	IC-300D	IC-400D	
1	Bolt M6*12	Bolt M6*12	3	3	E9-01
2	Oil Pump Cover	Oil Pump Cover	1	1	E9-02
3	O-Ringφ34.5*φ1.8	O-Ringφ34.5*φ1.8	1	1	E9-03
4	Outer Rotator	Outer Rotator	1	1	E9-04
5	Inner Rotator	Inner Rotator	1	1	E9-05
6	Oil Pump Shaft	Oil Pump Shaft	1	1	E9-06
7	Pinφ3*16	Pinφ3*16	1	1	E9-07
8	Oil Pump Gear	Oil Pump Gear	1	1	E9-08
9	Oil Filter Assem	Oil Filter Assem	1	1	E9-09
10	O-Ringφ20*φ2.65	O-Ringφ20*φ2.65	1	1	E9-10
11	Bolt M6*16	Bolt M6*16	1	1	E9-11
12	Intake Pipe	Intake Pipe(oil)	1	1	E9-12

**FUEL TANK & FUEL PIPE ASSEMBLY**

**UNIT-10**

S.NO	DESCRIPTION		QUANTITY		Part No
	IC-300D	IC-400D	IC-300D	IC-400D	
1	Bolt M8*45	Bolt M8*45	1	1	E10-01
2	Upper Stay Bolt	Upper Stay Bolt	1	1	E10-02
3	Washerφ8	Washerφ8	1	1	E10-03
4	Upper Stay	Upper Stay	1	1	E10-04
5	Damper	Damper	4	4	E10-05
6	Clampφ9	Clampφ9	2	2	E10-06
7	Fuel Oil Return Pipe	Fuel Oil Return Pipe	1	1	E10-07
8	Clamp	Clamp	2	2	E10-08
9	Fuel Level Pipe	Fuel Level Pipe	1	1	E10-09
10	Bolt M6*16	Bolt M6*16	2	2	E10-10



11	Fuel Tank Cock Assem	Fuel Tank Cock Assem	1	1	E10-11
12	O-Ring φ13.2*1.8	O-Ring φ13.2*1.8	1	1	E10-12
13	Clampφ11.5	Clampφ11.5	2	2	E10-13
14	Fuel Oil Pipe	Fuel Oil Pipe	1	1	E10-14
15	Fuel Oil Filter Gasket	Fuel Oil Filter Gasket	1	1	E10-15
16	Filter Element Assem	Filter Element Assem	1	1	E10-16
17	Fuel Injection Pipe Assem	Fuel Injection Pipe Assem	1	1	E10-17
18	Fuel Tank Welded Assem	Fuel Tank Welded Assem	1	1	E10-18
19	Fuel Oil Filter	Fuel Oil Filter	1	1	E10-19
20	Fuel Lever Mark	Fuel Lever Mark	1	1	E10-20
21	Fuel Tank Cap Assem	Fuel Tank Cap Assem	1	1	E10-21
22	Lower Stay Assem	Lower Stay Assem	1	1	E10-22
23	Nut M6	Nut M6	2	2	E10-23
24	Fuel Tank Oil Plug Seal Assem	Fuel Tank Oil Plug Seal Assem	1	1	E10-24
25	Bolt M12*1.25*14	Bolt M12*1.25*14	1	1	E10-25

**GOVERNOR&CONTROL SYSTEM**

**UNIT-11**

S.NO	DESCRIPTION		QUANTITY		Part No
	IC-300D	IC-400D	IC-300D	IC-400D	
1	Control Handle Shaft	Control Handle Shaft	1	1	E11-01
2	Governor Handle Shaft Washer	Governor Handle Shaft Washer	2	2	E11-02
3	Governor Spring	Governor Spring	1	1	E11-03
4	Return Spring II	Return Spring II	1	1	E11-04
5	Nut M6	Nut M6	2	2	E11-05
6	Bolt M6*14	Bolt M6*14	1	1	E11-06
7	High Speed Limit Screw	High Speed Limit Screw	1	1	E11-07
8	Bolt M6*18	Bolt M6*25	1	1	E11-08
9	Nut M10*1.25	Nut M10*1.25	1	1	E11-09
10	Bowl-Shape Cover	Bowl-Shape Cover	1	1	E11-10
11	Spring	Spring	1	1	E11-11
12	Handle Bracket	Handle Bracket	1	1	E11-12
13	Control Handle	Control Handle	1	1	E11-13
14	Governor Lever Welded Part	Governor Lever Welded Part	1	1	E11-14
15	Pin3*22	Pin3*22	2	2	E11-15
16	Lever Fork	Lever Fork	1	1	E11-16
17	lever Shaft	lever Shaft	1	1	E11-17
18	Governor Lever Washer	Governor Lever Washer	1	1	E11-18
19	Seal WD8*14*2.5	Seal WD8*14*2.5	1	1	E11-19
20	Tappet	Tappet	1	1	E11-20
21	Fly Block	Fly Block	2	2	E11-21
22	Fly Block Pin	Fly Block Pin	2	2	E11-22

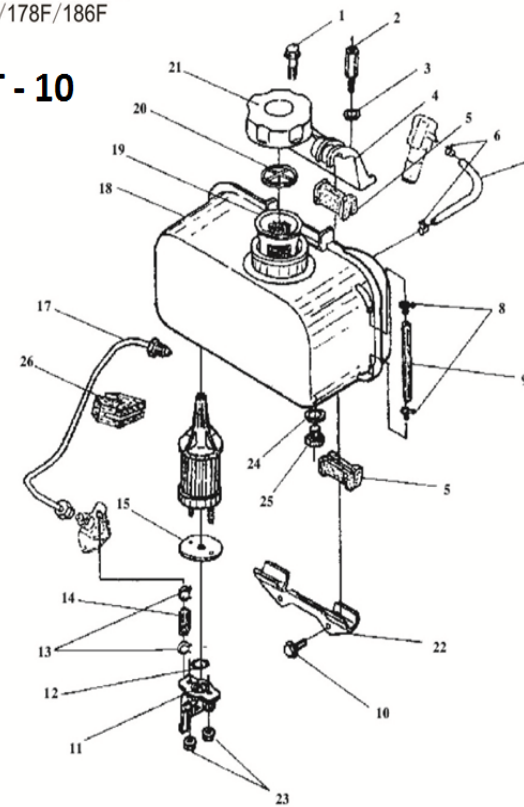
**FUEL INJECTION PUMP ASSEMBLY**

**UNIT-12**

S.NO	DESCRIPTION		QUANTITY		Part No
	IC-300D	IC-400D	IC-300D	IC-400D	
1	Delivery Holder	Delivery Holder	1	1	E12-01
2	Delivery Spring	Delivery Spring	1	1	E12-02
3	Delivery Gasket	Delivery Gasket	1	1	E12-03
4	Delivery Valve	Delivery Valve	1	1	E12-04
5	Delivery Seat	Delivery Seat	1	1	E12-05
6	Joint	Joint	1	1	E12-06
7	O-Ring	O-Ring	1	1	E12-07

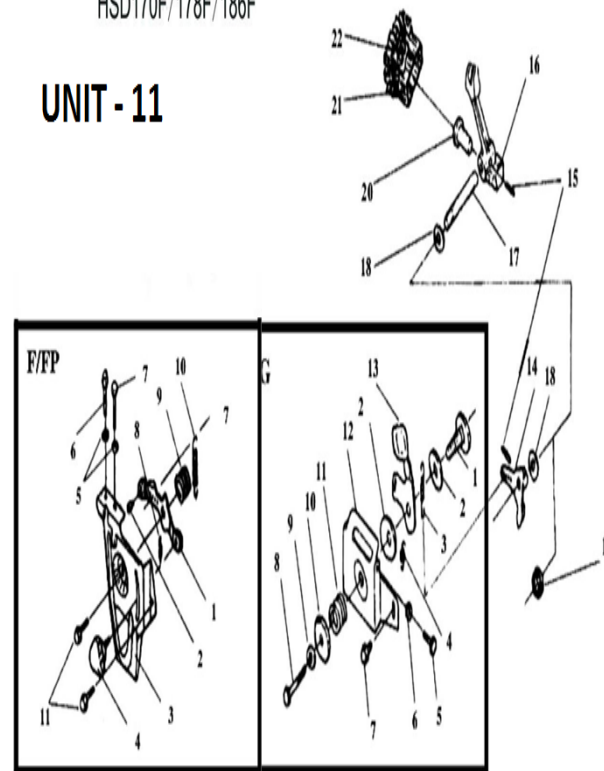
HSD170F/178F/186F

**UNIT - 10**



HSD170F/178F/186F

**UNIT - 11**



8	F.I.Pump Body	F.I.Pump Body	1	1	E12-08
9	Plunger	Plunger	1	1	E12-09
10	Shiim Set	Shiim Set	When Necessary		E12-10
11	Pin φ2*6	Pin φ2*6	2	2	E12-11
12	Packing	Packing	1	1	E12-12
13	Control Lever Assem	Control Lever Assem	1	1	E12-13
14	Snap Ring	Snap Ring	1	1	E12-14
15	Pin φ3*8	Pin φ3*8	1	1	E12-15
16	Spring Seat	Spring Seat	2	2	E12-16
17	F.I.Pump Spring	F.I.Pump Spring	1	1	E12-17
18	Spring Seat	Spring Seat	1	1	E12-18
19	Tappet	Tappet	1	1	E12-19

**FUEL NOZZLE ASSEMBLY**

**UNIT-13**

S.NO	DESCRIPTION		QUANTITY		Part No
	IC-300D	IC-400D	IC-300D	IC-400D	
1	Nozzle Holder Assem	Nozzle Holder Assem	1	1	E13-01
2	Shim Pack	Shim Pack	When Necessary		E13-02
3	Nozzle Spring	Nozzle Spring	1	1	E13-03
4	Spring Retainer	Spring Retainer	1	1	E13-04
5	Stop Plate	Stop Plate	1	1	E13-05
6	Pin	Pin	2	2	E13-06
7	Nozzie Valve	Nozzie Valve	1	1	E13-07
8	Nozzle Case Nut	Nozzle Case Nut	1	1	E13-08

**RECOIL STARTER ASSEMBLY**

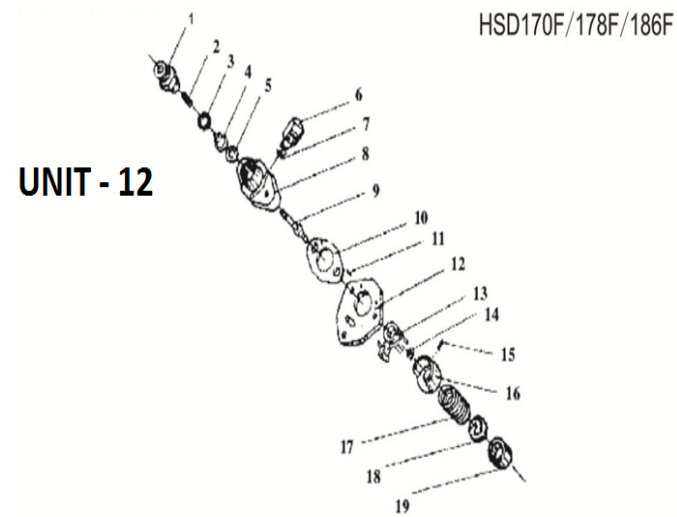
**UNIT-14**

S.NO	DESCRIPTION		QUANTITY		Part No
	IC-300D	IC-400D	IC-300D	IC-400D	
1	Nut M8	Nut M8	1	1	E14-01
2	Friction Plate	Friction Plate	1	1	E14-02
3	Fricton Washer	Fricton Washer	1	1	E14-03
4	Ratchet Plate	Ratchet Plate	1	1	E14-04
5	Washer φ6	Washer φ6	1	1	E14-05
6	Raturn Spring	Raturn Spring	1	1	E14-06
7	Push Spring	Push Spring	1	1	E14-07
8	Ratchet	Ratchet	2	2	E14-08
9	Pin φ8*18	Pin φ8*18	2	2	E14-09
10	Reel	Reel (Rope)	1	1	E14-10
11	Spiral Spring	Spiral Spring	1	1	E14-11
12	Case Assem (Starter)	Case Assem (Starter)	1	1	E14-12
13	Bolt M6*8	Bolt M6*8	4	4	E14-13
14	Starter Rope	Starter Rope	1	1	E14-14
15	Starter Handle	Starter Handle	1	1	E14-15

**COOLING DEVICE ASSEMBLY**

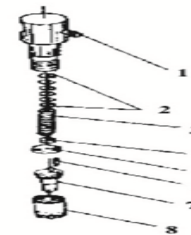
**UNIT-15**

S.NO	DESCRIPTION		QUANTITY		Part No
	IC-300D	IC-400D	IC-300D	IC-400D	
1	Shock Absorber Seat	Shock Absorber Seat	1	1	E15-01
2	Fan Case Welded Assem	Fan Case Welded Assem	5	4	E15-02
3	Shock Absorber(Fan Case)	Shock Absorber(Fan Case)	5	4	E15-03
4	Collar	Collar	5	4	E15-04
5	Washerφ6	Washerφ6	5	4	E15-05
6	Bolt M6*22	Bolt M6*22	5	4	E15-06



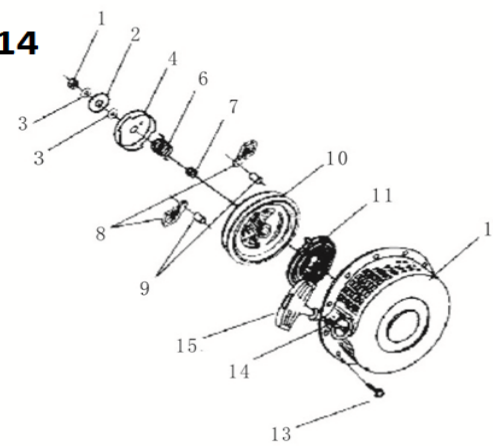
HSD170F/178F/186F

**UNIT - 13**



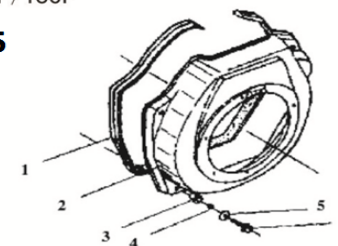
HSD170F/178F/186F

**UNIT - 14**



HSD170F/178F/186F

**UNIT - 15**



**STARTER & GENERATOR ASSEMBLY****UNIT-16**

S.NO	DESCRIPTION		QUANTITY		Part No
	IC-300D	IC-400D	IC-300D	IC-400D	
1	Fly Wheel Generator	Fly Wheel Generator	1	1	E16-01
2	Bolt M6*18	Bolt M6*18	3	3	E16-02
3	Screw M6*12	Screw M6*12	3	3	E16-03
4	Bolt M6*10	Bolt M6*10	1	1	E16-04
5	Clamp	Clamp	1	1	E16-05
6	Regulator	Regulator	1	1	E16-06
7	Starting Motor	Starting Motor	1	1	E16-07
8	Bolt M10*1.5*30	Bolt M10*1.5*30	2	2	E16-08
9	Washer φ10	Washer φ10	2	2	E16-09
10	Washer φ10	Washer φ10	2	2	E16-10

