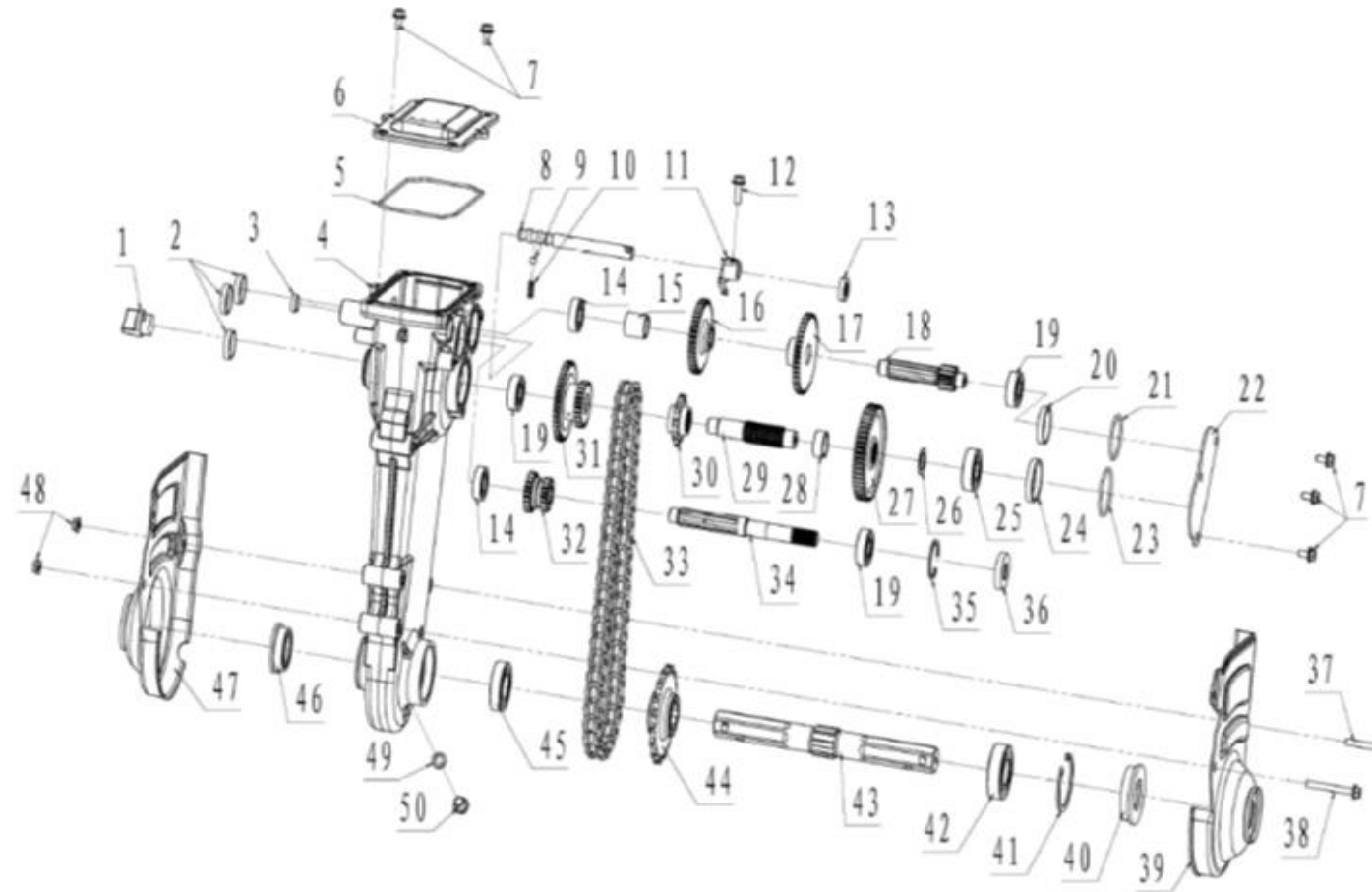


KK-PART NO	KK-PART NAME	Qty
G/B 1-01	Oil Hole Plug	1
G/B 1-02	Oil Plug A	3
G/B 1-03	Oil Plug B	1
G/B 1-04	Gear Box Housing	1
G/B 1-05	Seal Ring Of Top Cover	1
G/B 1-06	Top cover Comp Of Gear Box	1
G/B 1-07	Bolt M6×12	5
G/B 1-08	Shift Fork Shaft	1
G/B 1-09	Steel Ball SΦ 6.35	1
G/B 1-10	Spring	1
G/B 1-11	Shift Fork	1
G/B 1-12	Bolt M6×20	1
G/B 1-13	Oil Seal 12×22×6	1
G/B 1-14	Bearing 6002	2
G/B 1-15	Bush F1	1
G/B 1-16	The 2nd Driven Gear	1
G/B 1-17	The 1st Driven Gear	1
G/B 1-18	Counter Shaft	1
G/B 1-19	Bearing 6202	3
G/B 1-20	Bush C	1
G/B 1-21	O-ring 39×2.6	1
G/B 1-22	Oil Stopper	1
G/B 1-23	O-ring 43.5×2.6	1
G/B 1-24	Bush D	1
G/B 1-25	Bearing 6203	1
G/B 1-26	Backup Plate	1
G/B 1-27	Driving Gear	1
G/B 1-28	Bush I	1
G/B 1-29	Driving Sprocket Shaft	1
G/B 1-30	Driving Sprocket	1
G/B 1-31	Double reverse gear	1
G/B 1-32	Two-throw Gear	1
G/B 1-33	Chain(50 Joints)	1
G/B 1-34	Main Shaft	1
G/B 1-35	Circlip 35	1
G/B 1-36	Oil Seal 16×35×7	1
G/B 1-37	Bolt M6×45	1
G/B 1-38	Bolt M6×55	1
G/B 1-39	Gear Box Left Cover	1
G/B 1-40	Oil Seal A	1
G/B 1-41	Circlip 52	1
G/B 1-42	Bearing 6205	1
G/B 1-43	Driven Sprocket Shaft	1
G/B 1-44	Driven Sprocket	1
G/B 1-45	Bearing 6005	1
G/B 1-46	Oil Seal B	1
G/B 1-47	Gear Box Right Cover	1
G/B 1-48	Nut M6	2
G/B 1-49	Washer 10×16×2 (DrainBolt)	1
G/B 1-50	DrainBolt M10×1.25×12	1

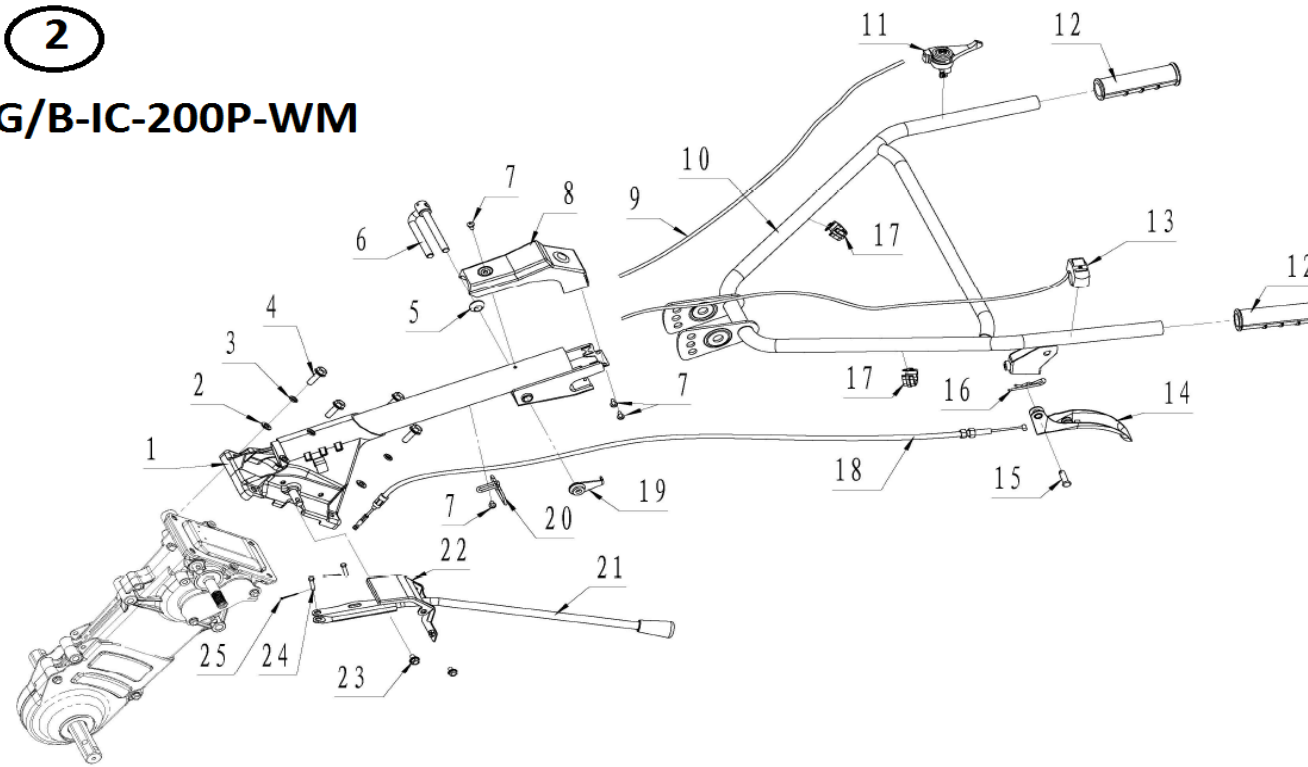
1

G/B - - IC-200P-WM



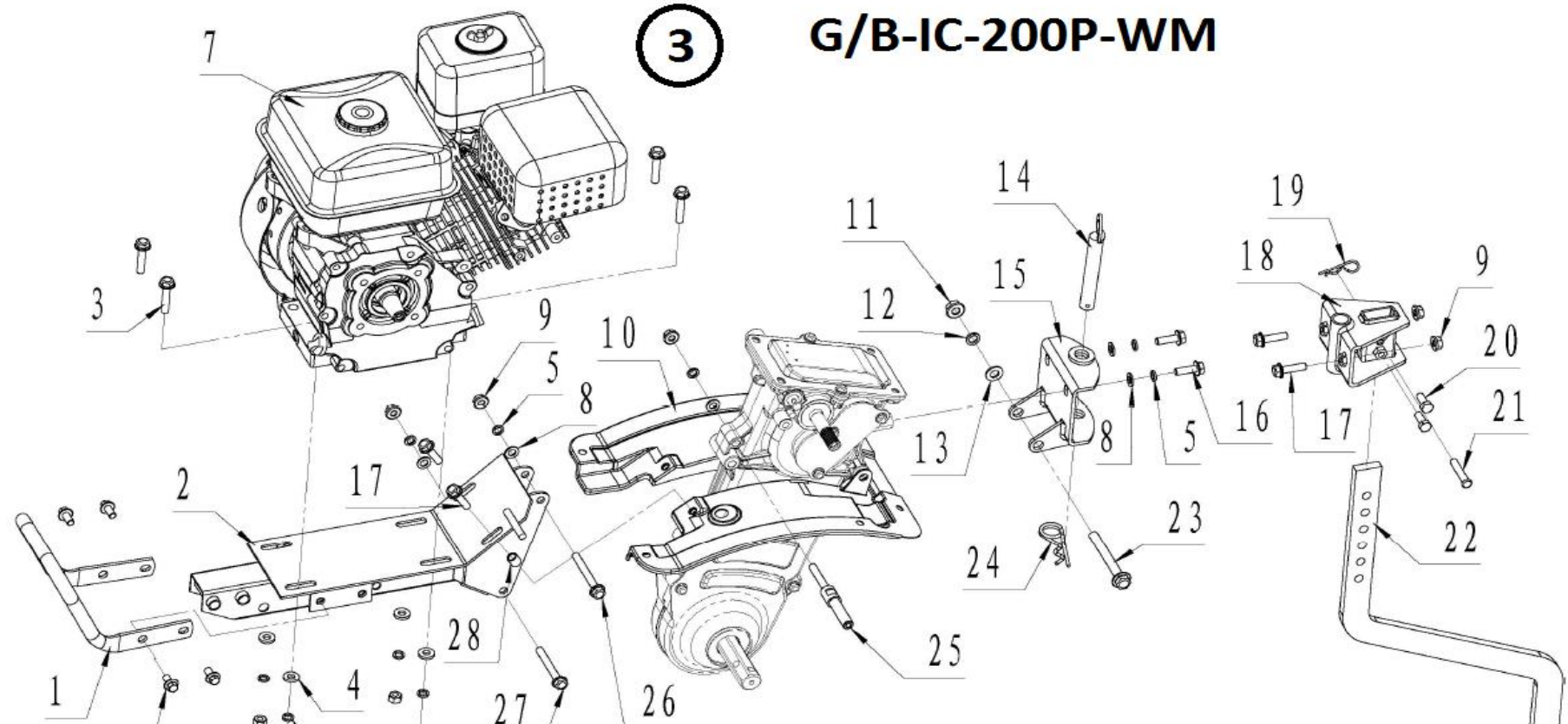
		Qty
G/B 2-01	Standing pipe Jointing	1
G/B 2-02	Flat Washer 8	4
G/B 2-03	Spring Washer 8	4
G/B 2-04	Bolt M8×25	4
G/B 2-05	Wimble Bush	1
G/B 2-06	Handle Adjuster Bolt	1
G/B 2-07	Screw ST 4.8×12	4
G/B 2-08	Inlet Cover	1
G/B 2-09	Throttle Cable Comp	1
G/B 2-10	Handle Comp	1
G/B 2-11	Throttle Handlebar	1
G/B 2-12	Grip (Handle)	1
G/B 2-13	Shut Down Switch Comp	1
G/B 2-14	Clutch Handle	1
G/B 2-15	Pin 8×28	1
G/B 2-16	Clip F	1
G/B 2-17	Clip φ 22	2
G/B 2-18	Clutch Cable	1
G/B 2-19	Handle Adjuster Clamp	1
G/B 2-20	Loop	1
G/B 2-21	Shift Lever	1
G/B 2-22	Gear Position Indication Stand	1
G/B 2-23	Bolt M6×10	2
G/B 2-24	Pin 5 X 25	2
G/B 2-25	Clip 1.5 X 20	2

**2**  
**G/B-IC-200P-WM**

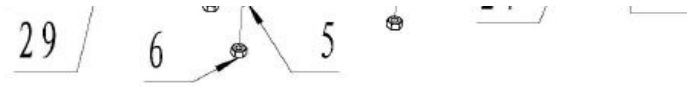


		Qty
G/B 3-01	Handrail	1
G/B 3-02	Engine Bracket	1
G/B 3-03	Bolt M8×40	4
G/B 3-04	Flat Washer 8×18×3	4
G/B 3-05	Spring Washer 8	9
G/B 3-06	Nut M8	4
G/B 3-07	Gasoline Engine	1
G/B 3-08	Flat Washer 8	5
G/B 3-09	Nut M8	5
G/B 3-10	Inner Fender	1
G/B 3-11	Nut M10	1
G/B 3-12	Spring Washer 10	1
G/B 3-13	Flat Washer 10	1
G/B 3-14	Pin Spindle	1
G/B 3-15	Hinge frame combination	1
G/B 3-16	Bolt M8×25	2
G/B 3-17	Bolt M8×30	4
G/B 3-18	Deep Furrowing Connecting Set	1
G/B 3-19	Garter Spring B	1
G/B 3-20	Bolt M8×20	2
G/B 3-21	Pin Spindle 8×43	1
G/B 3-22	Deep Furrowing Resistance part	1
G/B 3-23	Bolt M10×90	1

**3**  
**G/B-IC-200P-WM**

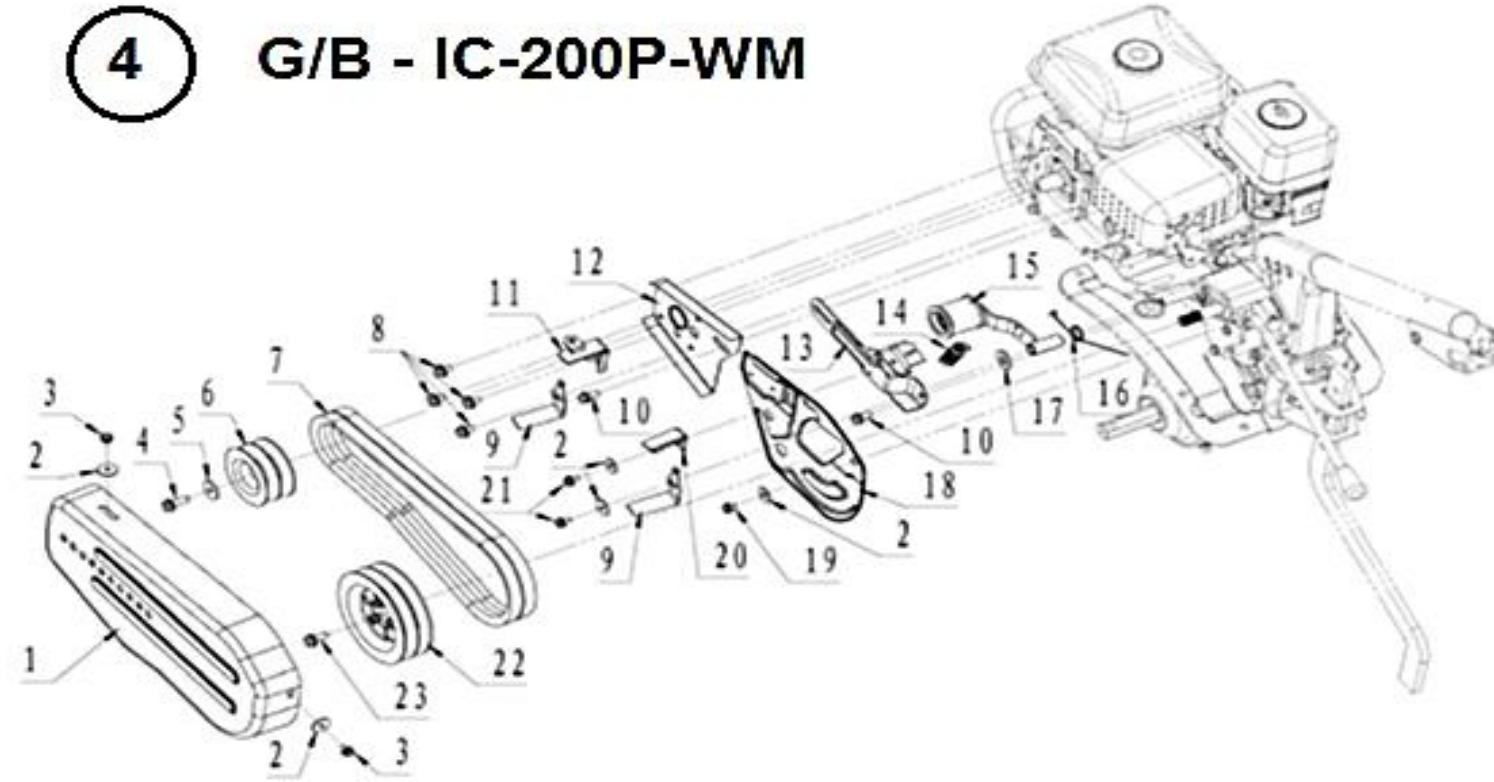


G/B 3-24	Garter Spring C	1
G/B 3-25	Pin (Tensioner)	1
G/B 3-26	Bolt M8X 70	1
G/B 3-27	Bolt M8X 65	1
G/B 3-28	Bush 8X12X12	2
G/B 3-29	Bolt M8X 16	4

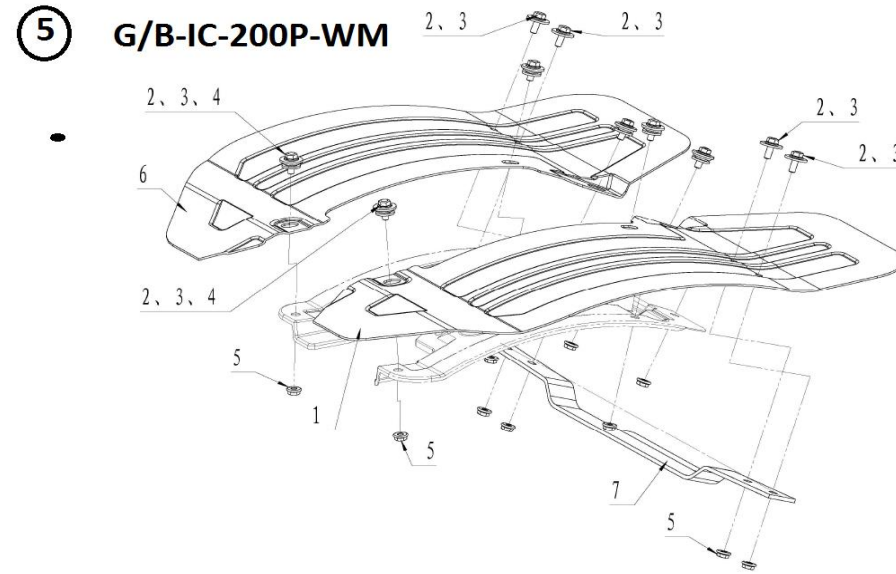


		Qty
G/B 4-01	Belt Protector	1
G/B 4-02	Washer 6x22x2 Flat	5
G/B 4-03	Bolt M6x10	2
G/B 4-04	Bolt M8x25	1
G/B 4-05	Washer 8x28x3 Flat	1
G/B 4-06	Driving Pulley	1
G/B 4-07	V-belt	2
G/B 4-08	Bolt M8x12	4
G/B 4-09	V-belt Guard C	2
G/B 4-10	Bolt M8x16	2
G/B 4-11	V-belt Guard B	1
G/B 4-12	Driving Pulley Plate	1
G/B 4-13	Connecting Plate	1
G/B 4-14	Tensioner Spring	1
G/B 4-15	Tensioner Jointing	1
G/B 4-16	Torsion-bar Spring(Tensioner)	1
G/B 4-17	Washer Flat	1
G/B 4-18	Drive Pulley Plate	1
G/B 4-19	Bolt M6x10	1
G/B 4-20	V-belt Guard A	1
G/B 4-21	Bolt M6x12	2
G/B 4-22	Drive Pulley Comp	1
G/B 4-23	Bolt M6x20	1

### 4 G/B - IC-200P-WM



		Qty
G/B 5-01	Left Fender	1
G/B 5-02	Bolt M6x16	10
G/B 5-03	Washer 6x22x2	10
G/B 5-04	Rubber Sleeve	6
G/B 5-05	Nut M6	10
G/B 5-06	Right Fender	1
G/B 5-07	Connecting Plate	1

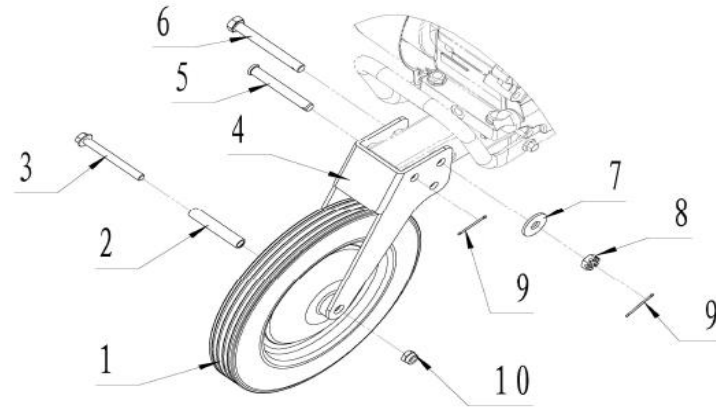


		Qty
G/B 6-01	Front Wheel	1



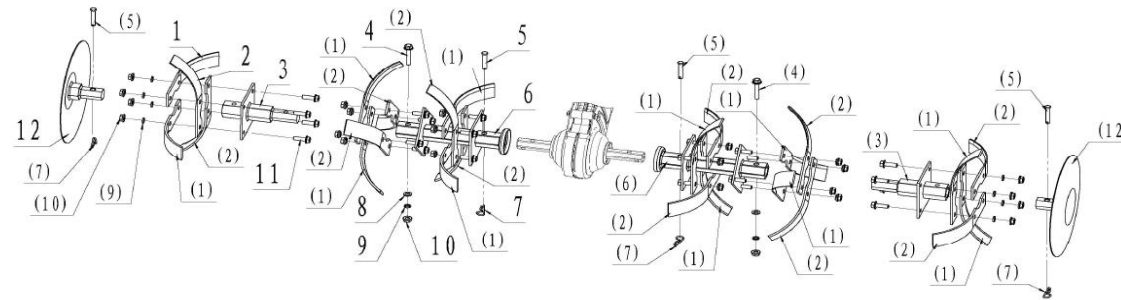
G/B 6-02	Sleeve (Front Wheel)	1
G/B 6-03	Bolt M8x75	1
G/B 6-04	Front Wheel Stand	1
G/B 6-05	Pin 10x75	1
G/B 6-06	Bolt M10x85	1
G/B 6-07	Washer 10 Flat	1
G/B 6-08	Nut M10	1
G/B 6-09	Cotter Pin 2x30	2
G/B 6-10	Nut M8	1

**6** G/B-IC-200P-WM



		Qty
G/B 7-01	Left Rotary Blade(DRY LAND)	12
G/B 7-01	Left Rotary Blade (WET LAND)	12
G/B 7-02	Right Rotary Blade(DRY LAND)	12
G/B 7-02	Right Rotary Blade (WET LAND)	12
G/B 7-03	Subsidiary Blade Holder Comp	2
G/B 7-04	Bolt M8x45	2
G/B 7-05	Pin Spindle 8x43	4
G/B 7-06	Primary Blade Holder Comp	2
G/B 7-07	Garter Spring B	4
G/B 7-08	Flat Washer 8	2
G/B 7-09	Spring Washer 8	26
G/B 7-10	Nut M8	26
G/B 7-11	Bolt M8 x 25	24
G/B 7-12	Side Disc	2

**7** G/B-IC-200P-WM



		Qty
G/B 8-01	Nut M10	8
G/B 8-02	Spring Washer10	8
G/B 8-03	Washer Flat 10	8
G/B 8-04	Wheel axle	1
G/B 8-05	Spoke(INSIDE)	1
G/B 8-06	Inner Tube	1
G/B 8-07	Outer Rubber Tyre 3.5-4	1
G/B 8-08	Spoke(OUTSIDE)	1
G/B 8-09	Bolt	4

**8** G/B-IC-200P-WM

