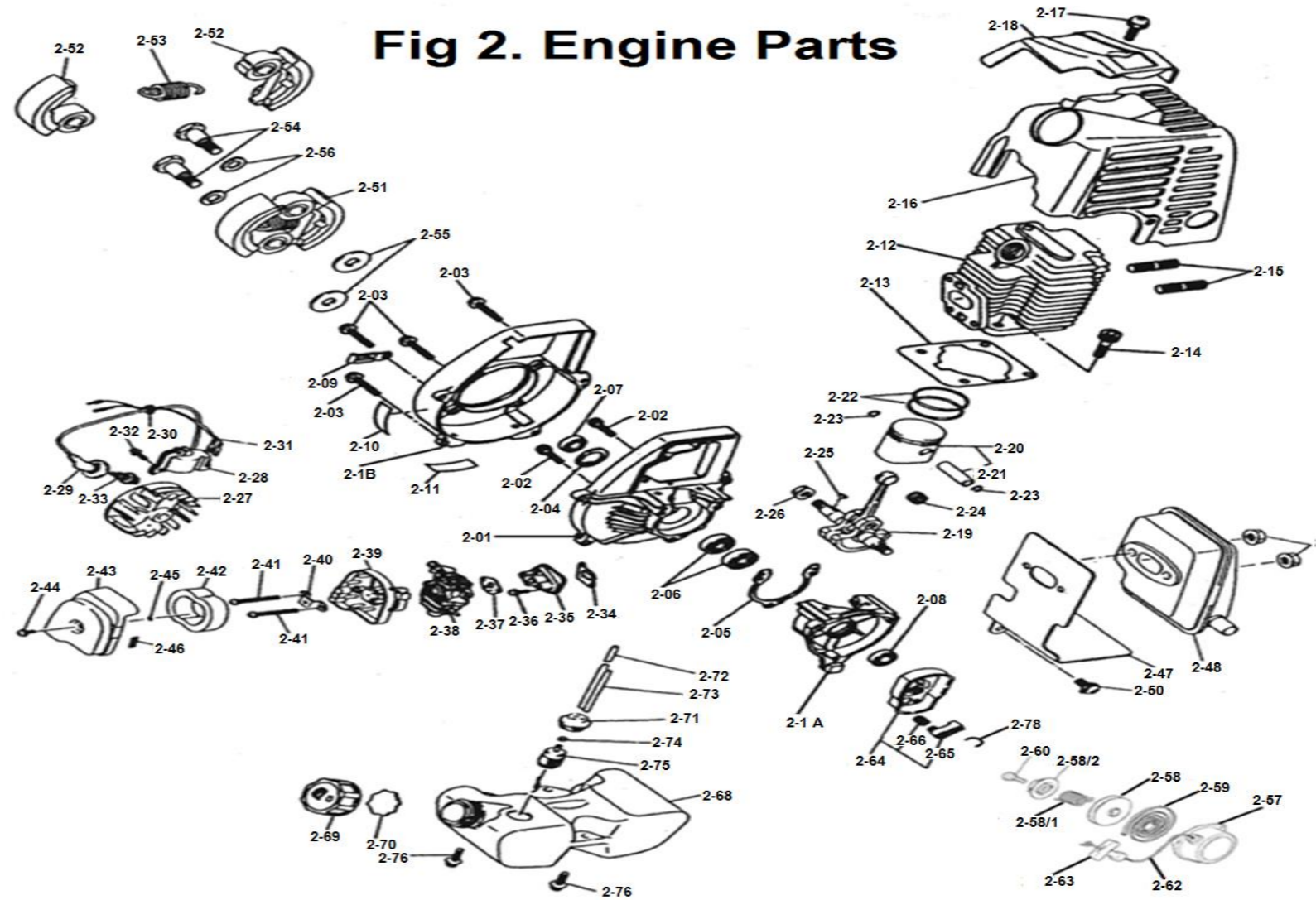
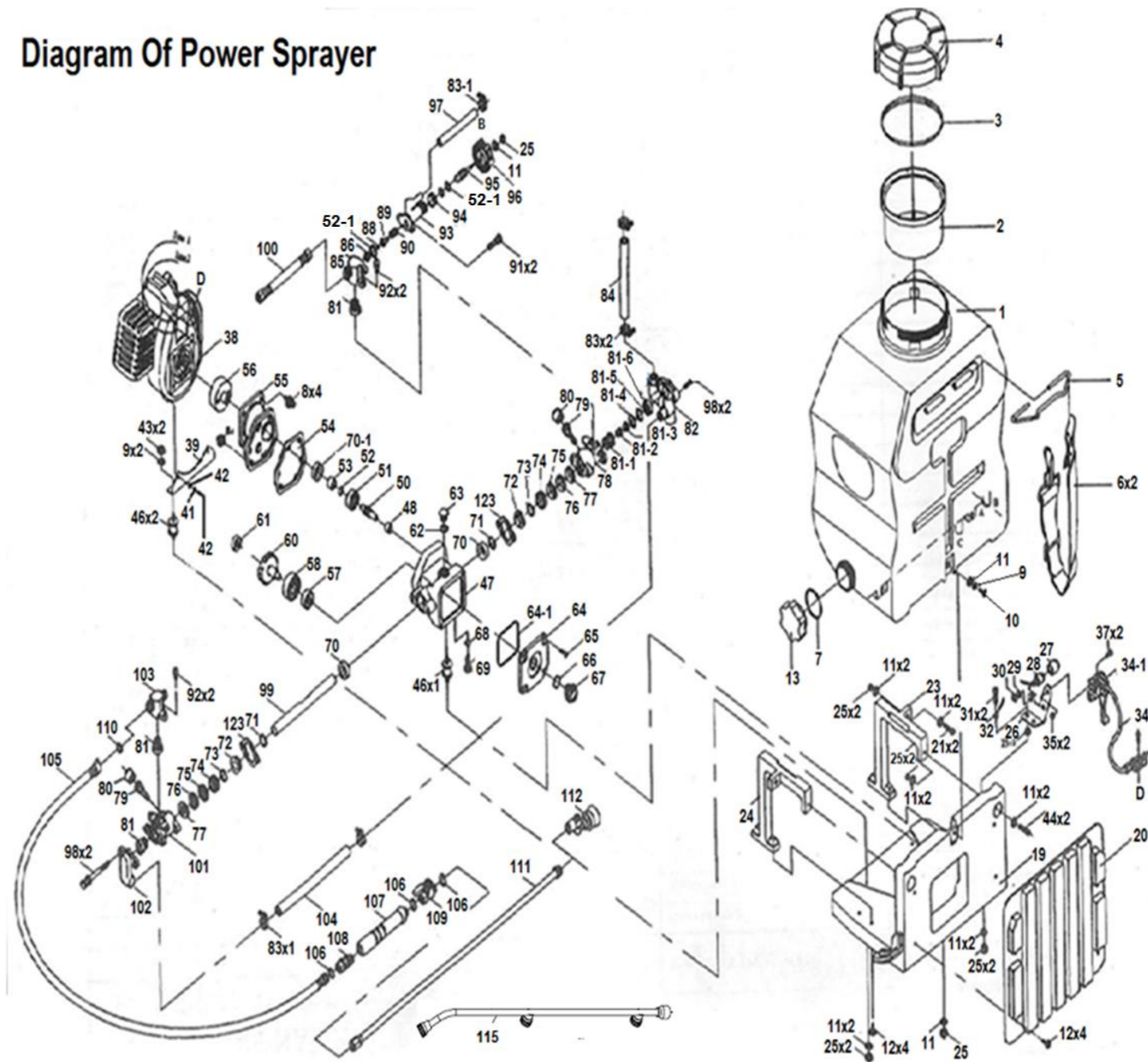


Part No.	Part Name (Engine)	Part No.	Part Name (Engine)
2-1	Crankcase Big	2-43	Air Cleaner Outside Cover
2-1A	Crank Case Small	2-44	Screw -Air Filter
2-1B	Fan Cover	2-45	N/A
2-2	Screw M5X25-Allen	2-46	N/A
2-3	Screw M5X20-Star	2-47	Gasket-Muffler
2-4	Stop Ring 28-Inner	2-48	Muffler
2-5	Gasket-Crankcase	2-49	N/A
2-6	Bearing-6001	2-50	N/A
2-7	Oil Seal-Big 12x30x7	2-51	Clutch Shoe Assy
2-8	Oil Seal-Small 12x22x7	2-52	N/A
2-9	N/A	2-53	Spring-Clutch
2-10	N/A	2-54	Clutch Bolt
2-11	N/A	2-55	Washer B-Clutch
2-12	Cylinder	2-56	Washer A-Clutch
2-13	Gasket -Cylinder	2-57	Starter Cover
2-14	Screw M5x16-Allen	2-58	Rope Reel
2-15	Screw M5x45-Allen	2-58/1	Ratchet Spring
2-16	Guide Cover Assy	2-58/2	Ratchet Starter
2-17	Screw M5x16-Star	2-59	Recoil Spring
2-18	N/A	2-60	Screw -Ratchet
2-19	Crank Shaft Assy	2-61	N/A
2-20	Piston	2-62	Starter Rope
2-21	Piston Pin	2-63	Starter Handle
2-22	Piston Rings	2-64	Start Reel
2-23	Circlip-Piston Pin	2-65	Start Claw
2-24	Needle Bearing-Piston Pin	2-66	Claw Spring
2-25	Key-Crank Shaft	2-67	N/A
2-26	Nut M8-Flanged Hex	2-68	Fuel Tank 708
2-27	Fly Wheel	2-68	Fuel Tank 768/800
2-28	Ignition Coil	2-69	Fuel Tank Lid 708
2-29	Cap-Spark Plug	2-69	Fuel Tank Lid 768/800
2-30	Grommet -Cord Comp	2-70	Gasket-Fuel Tank Lid
2-31	Cord Comp-Coil	2-71	Fuel Pipe Grommet
2-32	Screw M5x20-Star	2-72	Fuel Pipe Long 708
2-33	Spark Plug	2-72	Fuel Pipe Long 768
2-34	Gasket-Insulator	2-73	Fuel Pipe Short 708
2-35	Insulator	2-73	Fuel Pipe Short 768
2-36	Screw M5x20-Star	2-74	N/A
2-37	Gasket -Carburetor	2-75	Petrol Filter
2-38	Carburetor	2-76	Screw M5x16-Star
2-39	Air Cleaner Inside Cover	2-77	Starter Assy
2-40	N/A	2-78	E Ring
2-41	Screw M5x50-Allen		
2-42	Air Filter Sponge		



Part No.	Part Name (Body)	Part No.	Part Name (Body)
1	Chemical Tank 708	65	Screw -Crank Case Cover
1	Chemical Tank 800	66	'O' Ring -Oil Glass
2	Stainer (Big)-Chemical Tank	67	Oil Glass
3	Gasket-Chemical Tank Lid	68	'O' Ring -Oil Drain Bolt
4	Chemical Tank Lid	69	Oil Drain Bolt
5	Belt Holder	70	Oil Seal -18x28x8
6	Shoulder Belt	70-1	Oil Seal -18x28x8
7	Gasket -Drain Cap	71	'O' ring-Plunger
8	Screw M6x18-Hex	72	Adjusting Ring
9	Washer 6-Spring	73	Grease Seal
10	S T Screw	74	Grease Ring
11	Washer 6-Plain	75	V-Packing
12	Screw M6x25-Star	76	N/A
13	Drain Cap-Chemical Tank	77	V-Packing Seat
19	Frame 708/800	78	Cylinder-Right
19	Frame-Metal 768	79+80	Grease Cup
20	Rubber Pad	81	Valve Assy
21	Screw M6x18-Hex	82	Suction Chamber-Right
23	Right Stand	83	Clip-L
24	Left Stand	83-1	Clip-S
25	Nut M6-Nylon	84	Suction Hose-5" 708/800
26	Fixed Plate-Flex Accelerator	84	Suction Hose-2.5Mts 768
28	Switch On/Off	85	Outlet Chamber -Right
30	Nut M8-Hex	86	Steel Ball Seat
31	Screw M6x18-Hex	88	Steel Ball
32	Cord Comp-Wire	89	Pressure Valve Rod
33	N/A	90	Relief Valve Spring
34	Throttle Cable	91	Screw M6x18-Hex
34-1	Flex Accelerator	92	Screw M6x18-Hex
35	Nut M6-Nylon	93	Relief valve Body
37	Screw M6x18-Hex	94	Brass Nut-Relief Valve
38	N/A	95	Relief Valve Screw
39	Engine Stand	96	Pressure Adjusting Knob
40	Washer 5-Plain	97	Over Flow Hose-5" 708/800
41	Washer 5-Spring	97	Over Flow Hose-2.5Mts 768
42	Screw M5x25-Allen	98	Screw M6x75-Hex
43	Nut M6-Nylon	99	Plunger
46	Joint-S	100	High Pressure Hose -Small
46-1	Joint-L	101	Cylinder-Left
47	Crank Case	102	Suction Chamber-Left
48	Needle Bearing-For Shaft	103	Outlet Chamber-Left
50	Shaft	104	Suction Hose-9"
51	Bearing-6201	105	High Pressure Hose -Big
52	'O' Ring-Steel Pipe	106	Packing -Handle/Spray Rod
52-1	'O' Ring-(Relief Valve/Ball Seat)	107	Hose Pipe Handle
53	Steel Pipe	108	N/A
54	Gasket-Drum Case	109	Ball Cock-One Way
55	Drum Case	110	Packing-High Pressure Hose

Diagram Of Power Sprayer



56	Clutch Drum	111	Spray Rod
57	Bearing-6200	115	Nozzle(3 Hole)
58	Bearing-6203	123	Fixed Plane
59	N/A		
60	Gear		
61	Bearing-608		
62	'O' Ring-Oil Inlet Bolt		
63	Oil Inlet Bolt		
64	Crank Case Cover		
64-1	'O' Ring -Crank Case Cover		