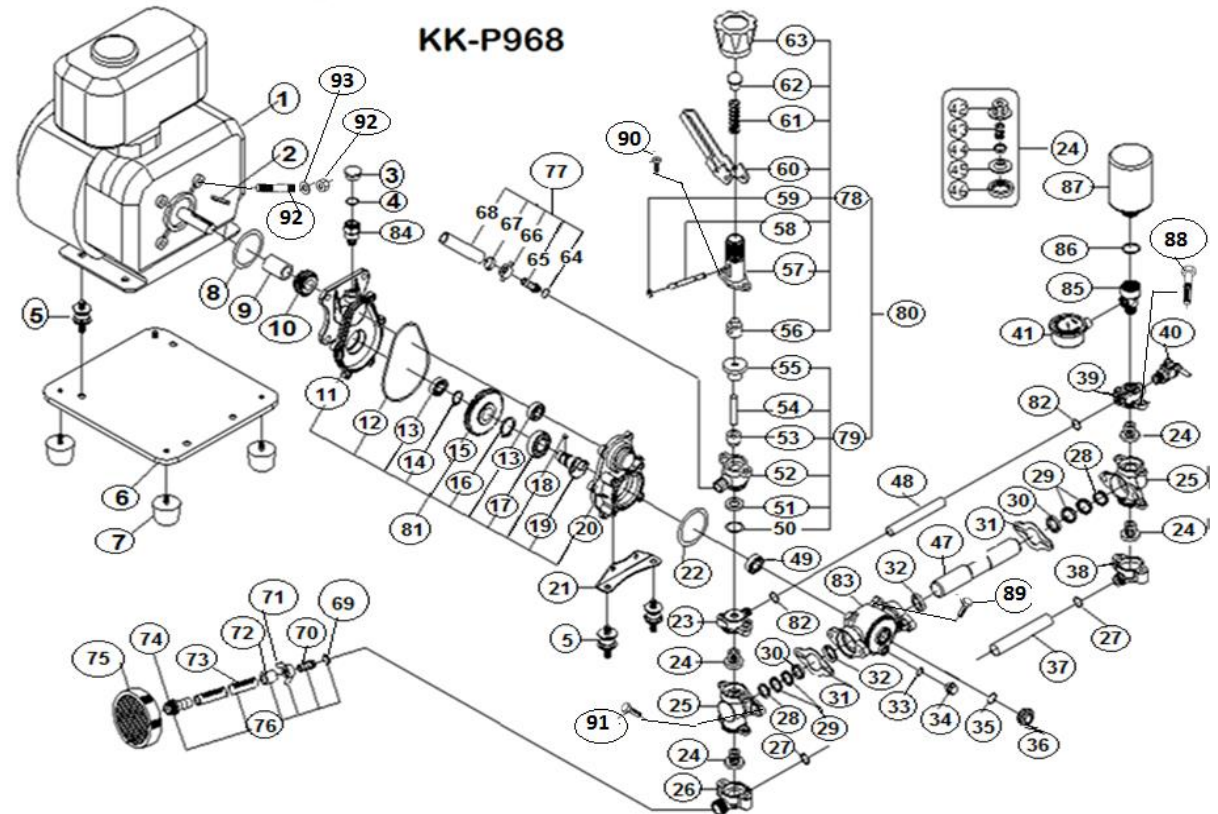


# KK-P968 (PARTS LIST)

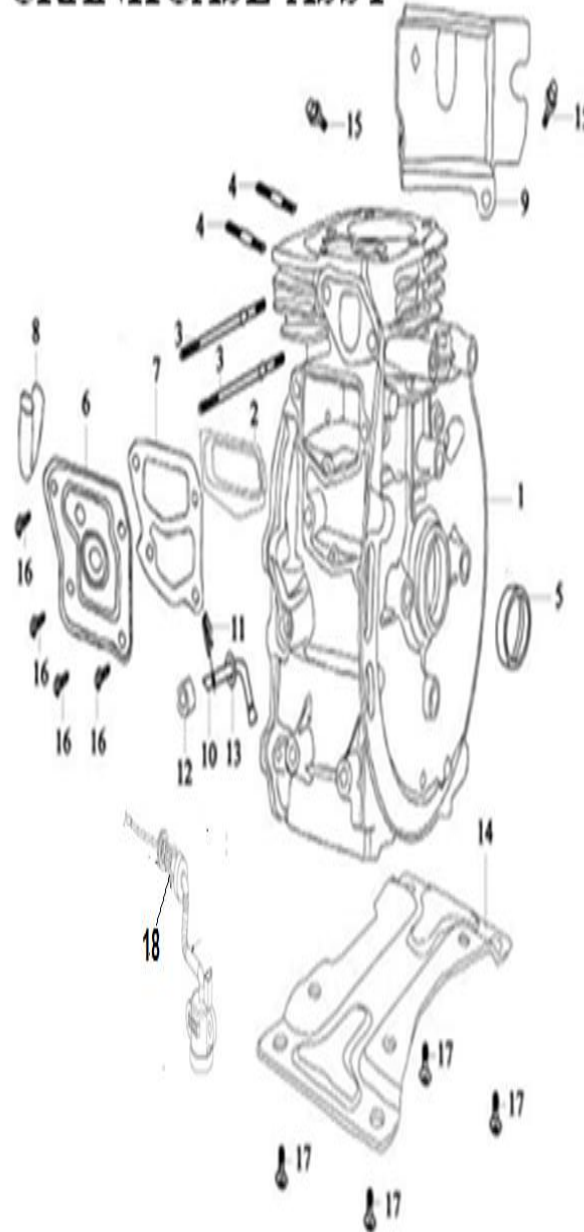
| Part No | PARTS NAME                          | QTY |
|---------|-------------------------------------|-----|
| B-01    | N/A                                 |     |
| B-02    | Key5X5X15                           | 1   |
| B-03    | Oil Plug                            | 1   |
| B-04    | (O-)Ring 18x2.4 (Oil Plug)          | 1   |
| B-05    | Anti-vibration feet(/JOINT)         | 4   |
| B-06    | Base Plate                          | 1   |
| B-07    | Anti-vibration feet(/BEDDING-FRAME) | 4   |
| B-08    | O-Ring 53x1.5                       | 1   |
| B-09    | Shaft Sleeve                        | 1   |
| B-10    | Small Gear                          | 1   |
| B-11    | Gear Box Casing                     | 1   |
| B-12    | O-Ring 90x1.9 (Gear Box Casing)     | 1   |
| B-13    | Bearing (6002)                      | 2   |
| B-14    | Outside circlip (-SMALL)            | 1   |
| B-15    | Big Gear                            | 1   |
| B-16    | Outside circlip (-BIG)              | 1   |
| B-17    | Bearing (6204)                      | 1   |
| B-18    | Key5X5X8                            | 1   |
| B-19    | Eccentric Shaft                     | 1   |
| B-20    | Gear Box Cover                      | 1   |
| B-21    | Support plate                       | 1   |
| B-22    | O-Ring 45x19 (Gear Box Cover)       | 1   |
| B-23    | Discharge Metal(brass)              | 1   |
| B-24    | Valve Assy                          | 4   |
| B-25    | Cylinder                            | 2   |
| B-26    | Suction Metal(brass)                | 1   |
| B-27    | O-Ring 14x2.2 (Suction Metal)       | 2   |
| B-28    | V-Packing Seat                      | 2   |
| B-29    | V-Packing                           | 4   |
| B-30    | Grand                               | 2   |
| B-31    | Packing Stable Plate                | 2   |
| B-32    | Oil Seal,Plunger (22X33X7)          | 2   |
| B-33    | O-Ring 10x2 (SCREW OIL DRAIN)       | 1   |
| B-34    | Screw (OIL DRAIN)                   | 1   |



|      |                                  |   |
|------|----------------------------------|---|
| B-35 | O-Ring 17x2 (Oil Gauge)          | 1 |
| B-36 | Oil Gauge Plug                   | 1 |
| B-37 | Stainless Steel Pipe(LOWER)      | 1 |
| B-38 | Suction Metal (DELIVERY Side)    | 1 |
| B-39 | Discharge Metal (DELIVERY Side)  | 1 |
| B-40 | Ball Cock                        | 1 |
| B-41 | Pressure Gauge                   | 1 |
| B-42 | Valve Seal                       | 4 |
| B-43 | N/A                              |   |
| B-44 | N/A                              |   |
| B-45 | N/A                              |   |
| B-46 | N/A                              |   |
| B-47 | Plunger                          | 1 |
| B-48 | Stainless Steel Pipe (UPPER)     | 1 |
| B-49 | Bearing (6201)                   | 1 |
| B-50 | O-Ring17x2(-Valve Seat)          | 1 |
| B-51 | Valve Seat                       | 1 |
| B-52 | Body Overflow                    | 1 |
| B-53 | Valve (-Overflow)                | 1 |
| B-54 | Valve Bar                        | 1 |
| B-55 | Box Water Seal                   | 1 |
| B-56 | Under Metal (/SPRING SEAT)       | 1 |
| B-57 | Spring Box                       | 1 |
| B-58 | Pin                              | 1 |
| B-59 | Fastener (/E-RING)               | 2 |
| B-60 | Lever (/ADJUSTER)                | 1 |
| B-61 | Spring                           | 1 |
| B-62 | Upper Metal                      | 1 |
| B-63 | Adjusting Screw                  | 1 |
| B-64 | O-Ring13.5x2(/PACKING OVERFLOW)  | 1 |
| B-65 | Core Coupling (/JOINT OVER FLOW) | 1 |
| B-66 | Wing Net (-OVER FLOW)            | 1 |
| B-67 | Brass Cup(/CLIP 1/4")            | 1 |
| B-68 | N/A                              |   |
| B-69 | Packing 17x13 (-SUCTION)         | 1 |
| B-70 | Core Coupling (/JOINT SUCTION)   | 1 |

|      |                                 |    |
|------|---------------------------------|----|
| B-71 | Wing Net (-SUCTION)             | 1  |
| B-72 | Brass Cup (/CRIMPING CLIP 1/2") | 1  |
| B-73 | N/A                             |    |
| B-74 | Core Strainer (-JOINT)          | 1  |
| B-75 | Strainer Assy                   | 1  |
| B-76 | Suction Hose Assy               | 1  |
| B-77 | Overflow Hose Assy              | 1  |
| B-78 | Spring Box Assy                 | 1  |
| B-79 | N/A                             |    |
| B-80 | N/A                             |    |
| B-81 | N/A                             |    |
| B-82 | O-Ring 12x2 (Discharge Metal)   | 2  |
| B-83 | Plunger Case                    | 1  |
| B-84 | Oil Cup                         | 1  |
| B-85 | Air Chamber Joint               | 1  |
| B-86 | O-Ring21x2.5 (Air Chamber)      | 1  |
| B-87 | Air Chamber                     | 1  |
| B-88 | Screw M 6x75 ALLEN              | 4  |
| B-89 | Screw M 6x20 ALLEN              | 10 |
| B-90 | Screw M 6x60 ALLEN              | 2  |
| B-91 | Screw M 8x25 ALLEN              | 4  |
| B-92 | Stud M 8x30                     | 4  |
| B-92 | Nut-M8                          | 4  |
| B-93 | Washer-8 Spring                 |    |

## CRANKCASE ASSY



## GE-100 CRANKCASE ASSY

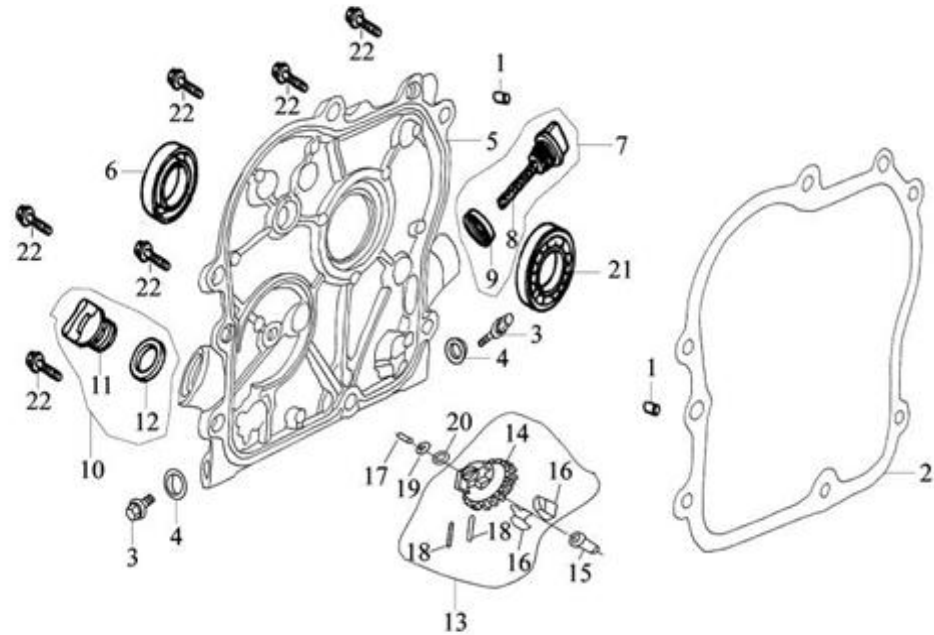
| S/N | Part No | K K Name                         |
|-----|---------|----------------------------------|
| 1   | 1-1     | Crankcase                        |
| 2   | 1-2     | Valve chamber clapboard sub-assy |
| 3   | 1-3     | Stud M5×118                      |
| 4   | 1-4     | Stud M6×52                       |
| 5   | 1-5     | Oil seal(17×30×6), crankshaft    |
| 6   | 1-6     | Cover, oil filter                |
| 7   | 1-7     | Gasket-Cover Oil Filter          |

|    |      |                    |
|----|------|--------------------|
| 8  | 1-8  | Return pipe        |
| 9  | 1-9  | Flow guard, lower  |
| 10 | 1-10 | Sway bar           |
| 11 | 1-11 | Keeper, sway bar   |
| 12 | 1-12 | Oil seal, sway bar |
| 13 | 1-13 | Washer, sway bar   |
| 14 | 1-14 | Bottom plate       |
| 15 | 1-15 | Bolt M6×14         |
| 16 | 1-16 | Bolt M5×10         |
| 17 | 1-17 | Bolt M8×14         |
| 18 | 1-18 | Oil Sensor         |

### GE-100 CRANKCASE COVER ASSY

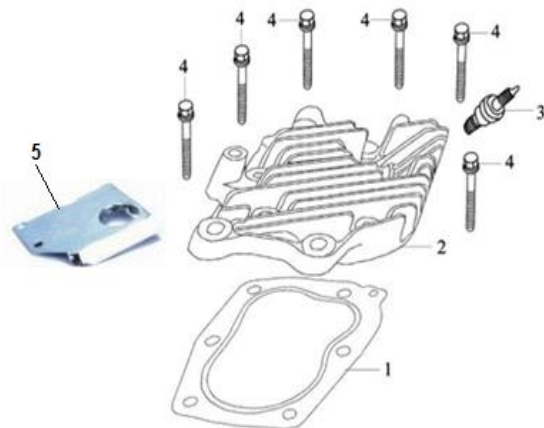
| S/N | Part No |                                |
|-----|---------|--------------------------------|
| 1   | 2-1     | Set pin $\phi 8 \times 14$     |
| 2   | 2-2     | Gasket, crankcase              |
| 3   | 2-3     | Drain plug                     |
| 4   | 2-4     | Washer -Drain Plug             |
| 5   | 2-5     | Crankcase cover                |
| 6   | 2-6     | Oil seal(17×30×6), crankshaft  |
| 7   | 2-7     | Dipstick sub-assy              |
| 8   | 2-8     | OIL Dipstick                   |
| 9   | 2-9     | Seal, dipstick                 |
| 10  | 2-10    | Oil plug sub-assy              |
| 11  | 2-11    | Oil plug                       |
| 12  | 2-12    | Seal, oil plug                 |
| 13  | 2-13    | Driven gear sub-assy, governor |
| 14  | 2-14    | Driven gear, governor          |
| 15  | 2-15    | Sliding sleeve                 |
| 16  | 2-16    | Flyweight                      |
| 17  | 2-17    | Governing shaft                |
| 18  | 2-18    | Pin, flyweight                 |
| 19  | 2-19    | Snap ring                      |
| 20  | 2-20    | Washer, driven gear            |

### CRANKCASE COVER ASSY



|    |      |              |
|----|------|--------------|
| 21 | 2-21 | Bearing 6203 |
| 22 | 2-22 | Bolt M6×29   |

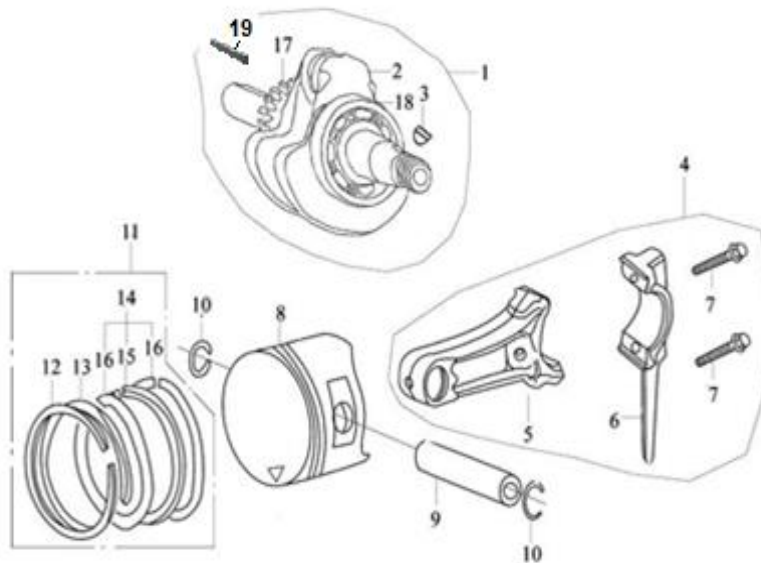
### CYLINDER COVER



### GE-100 CYLINDER COVER

| S/N | Part No |                       |
|-----|---------|-----------------------|
| 1   | 3-1     | Gasket, cylinder head |
| 2   | 3-2     | Cylinder cover        |
| 3   | 3-3     | Spark plug            |
| 4   | 3-4     | Bolt M6×35            |
| 5   | 3-5     | Flow Guard-Upper      |

### CRANKSHAFT, PISTON & CONNECTING ROD

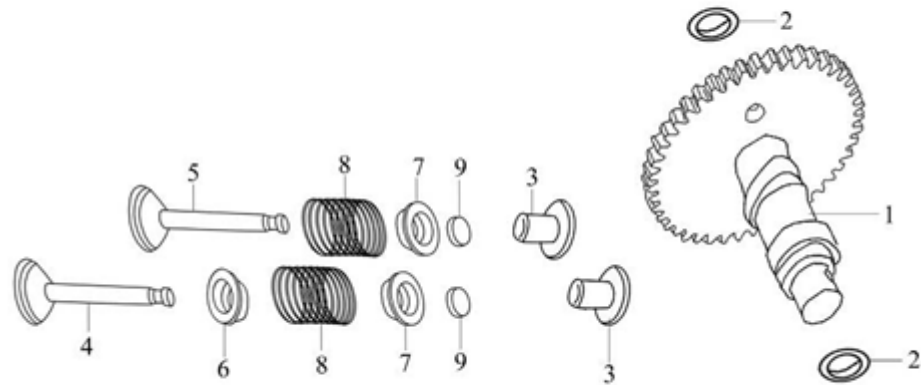


### CRANKSHAFT, PISTON & CONNECTIN

| S/N | Part No |                     |
|-----|---------|---------------------|
| 1   | 4-1     | Crankshaft sub-assy |
| 2   | 4-2     | N/A                 |
| 3   | 4-3     | Woodruff key        |
| 4   | 4-4     | Connecting rod      |
| 5   | 4-5     | N/A                 |
| 6   | 4-6     | N/A                 |
| 7   | 4-7     | Bolt M5×24          |
| 8   | 4-8     | Piston              |
| 9   | 4-9     | Piston pin          |
| 10  | 4-10    | Circlip, piston pin |

|    |      |                     |
|----|------|---------------------|
| 11 | 4-11 | Piston ring set     |
| 12 | 4-12 | N/A                 |
| 13 | 4-13 |                     |
| 14 | 4-14 |                     |
| 15 | 4-15 |                     |
| 16 | 4-16 |                     |
| 17 | 4-17 | Timing driving gear |
| 18 | 4-18 | Bearing 6203        |
| 19 | 4-19 | Key(pully) 5x5x35   |

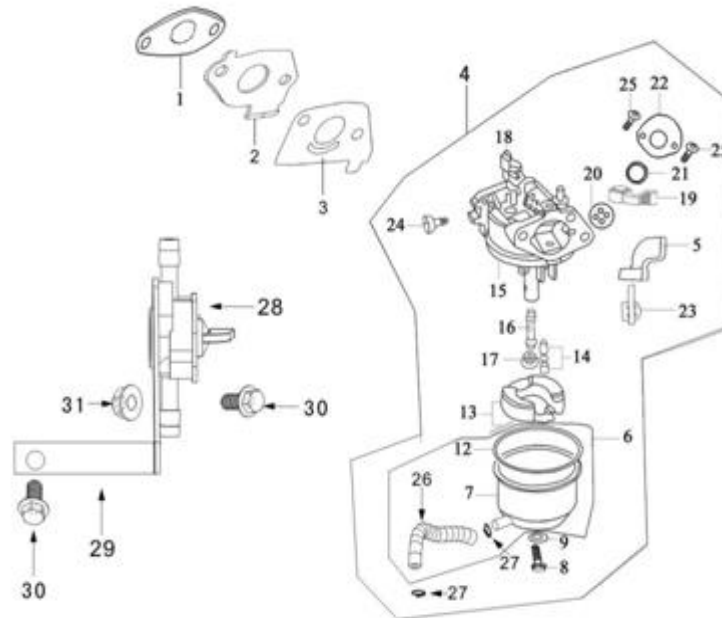
## COMBINATION OF CAMSHAFT & VALVE



## 00 COMBINATION OF CAMSHAFT & VALVE

| S/N | Part No |                      |
|-----|---------|----------------------|
| 1   | 5-1     | Camshaft             |
| 2   | 5-2     | Washer, camshaft     |
| 3   | 5-3     | Tappet               |
| 4   | 5-4     | Intake valve         |
| 5   | 5-5     | Exhaust valve        |
| 6   | 5-6     | Oil seal, valve stem |
| 7   | 5-7     | Spring seat, valve   |
| 8   | 5-8     | Valve spring         |
| 9   | 5-9     | Cap (Valve)          |

## CARBURETOR ASSY

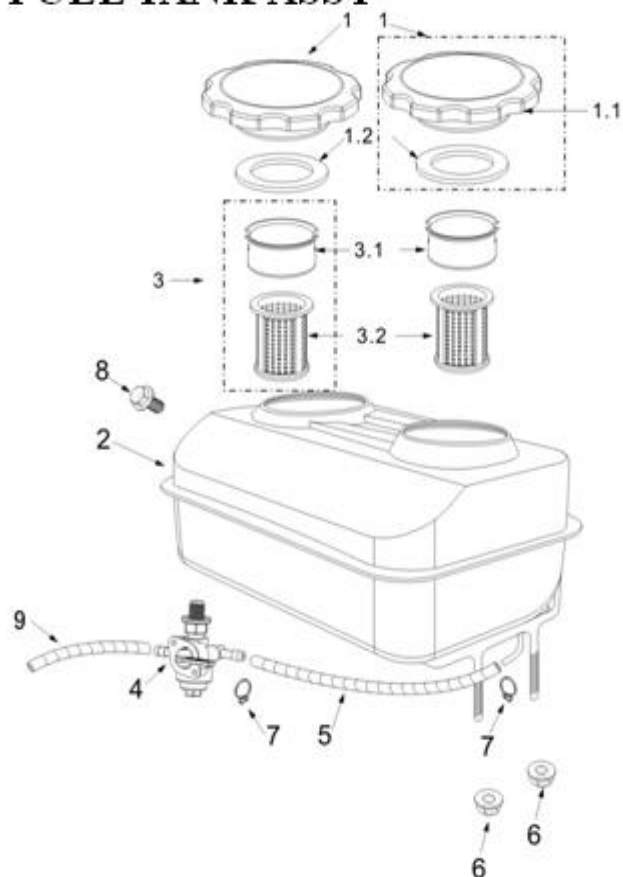


## GE-100 CARBURETOR ASSY

| S/N | Part No |                                    |
|-----|---------|------------------------------------|
| 1   | 6-1     | Gasket, intake port                |
| 2   | 6-2     | Block Carburator/ Connecting block |
| 3   | 6-3     | Gasket, carburetor                 |

|    |      |                                  |
|----|------|----------------------------------|
| 4  | 6-4  | Carburetor assy                  |
| 5  | 6-5  | Choke lever                      |
| 6  | 6-6  | Float chamber sub-assy           |
| 7  | 6-7  | Float chamber                    |
| 8  | 6-8  | Screw(Float chamber)             |
| 9  | 6-9  | Seal, screw                      |
| 12 | 6-12 | Gasket, float chamber            |
| 13 | 6-13 | Float sub-assy                   |
| 14 | 6-14 | Needle valve                     |
| 15 | 6-15 | Mixture chamber body             |
| 16 | 6-16 | Main nozzle                      |
| 17 | 6-17 | Main jet                         |
| 18 | 6-18 | Throttle unit                    |
| 19 | 6-19 | Throttle lever                   |
| 20 | 6-20 | Airproof washer                  |
| 21 | 6-21 | Washer                           |
| 22 | 6-22 | Cover                            |
| 24 | 6-24 | Idle adjusting screw             |
| 25 | 6-25 | Screw M4×6                       |
| 26 | 6-26 | Tubing                           |
| 27 | 6-27 | Pipe clamp                       |
| 28 | 6-28 | Fuel cock/Oil switch (for drain) |
| 29 | 6-29 | A mounting block                 |
| 30 | 6-30 | Bolt M6×14                       |
| 31 | 6-31 | Nut M6                           |

## FUEL TANK ASSY



## GE-100 FUEL TANK ASSY

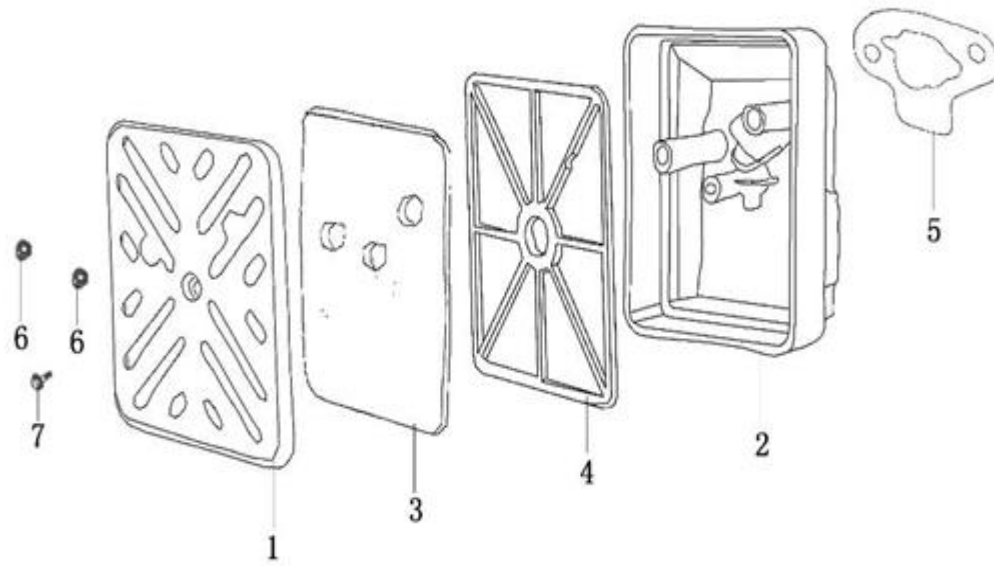
| S/N | Part No |                          |
|-----|---------|--------------------------|
| 1   | 7-1     | Fuel filler cap sub-assy |
| 1.1 | 7-1.1   | Fuel filler cap          |
| 1.2 | 7-1.2   | Packing (Fuel cap)       |
| 2   | 7-2     | Fuel tank                |
| 3   | 7-3     | Fuel Filter(Upper)       |
| 4   | 7-4     | Oil Switch/Fuel Cock     |

|   |     |                           |
|---|-----|---------------------------|
| 5 | 7-5 | Fuel Tube 200mm           |
| 6 | 7-6 | Nut M6                    |
| 7 | 7-7 | Pipe clamp/clip fuel tube |
| 8 | 7-8 | Bolt M4×6                 |
| 9 | 7-9 | Fuel Tube 130mm           |
|   |     |                           |

### GE-100 AIR (Air cleaner assy

| S/N | Part No |                           |
|-----|---------|---------------------------|
| 1   | 8-1     | Cover, air cleaner        |
| 2   | 8-2     | Housing, air cleaner      |
| 3   | 8-3     | Foam, air cleaner         |
| 4   | 8-4     | Bracket, air cleaner      |
| 5   | 8-5     | Gasket, air cleaner       |
| 6   | 8-6     | Nut M5                    |
| 7   | 8-7     | Self-tapping screw ST4×10 |

### AIR CLEANER ASSY



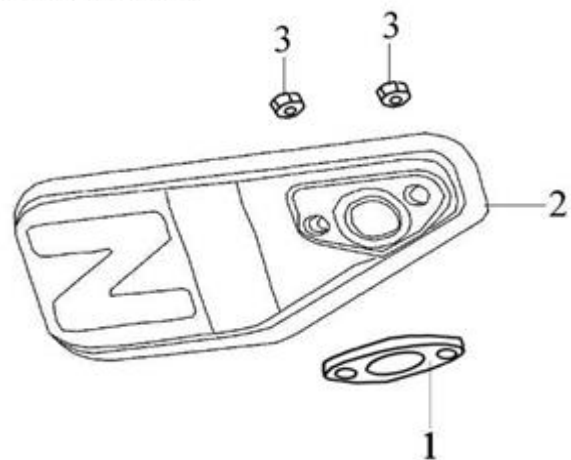
### GE-100 MUF]

| S/N | Part No |  |
|-----|---------|--|
|     |         |  |



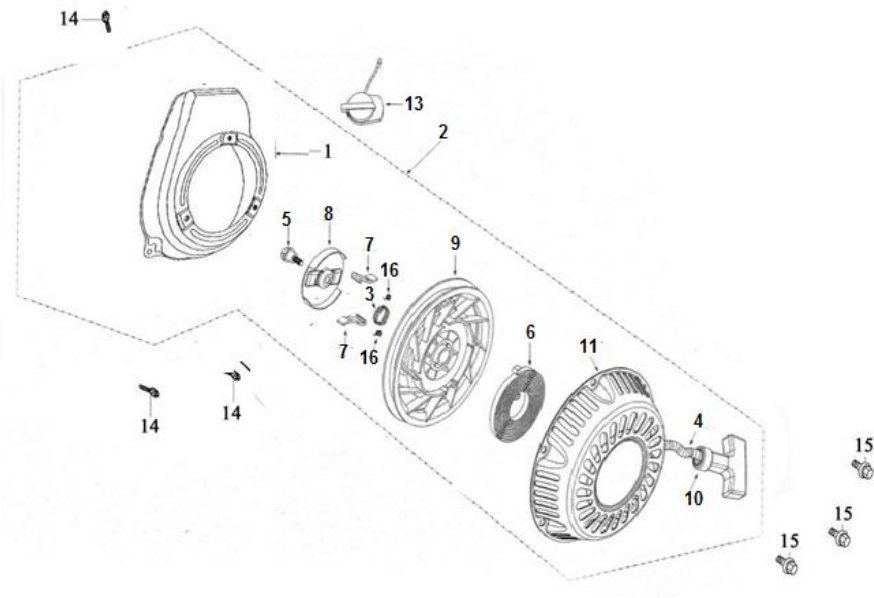
|   |     |                              |
|---|-----|------------------------------|
| 1 | 9-1 | Gasket, exhaust port         |
| 2 | 9-2 | Exhaust muffler              |
| 3 | 9-3 | Nut M6                       |
| 4 | 9-4 | Muffler Protector (Wire Net) |

## MUFFLER



## GE-100 RECOIL STARTER

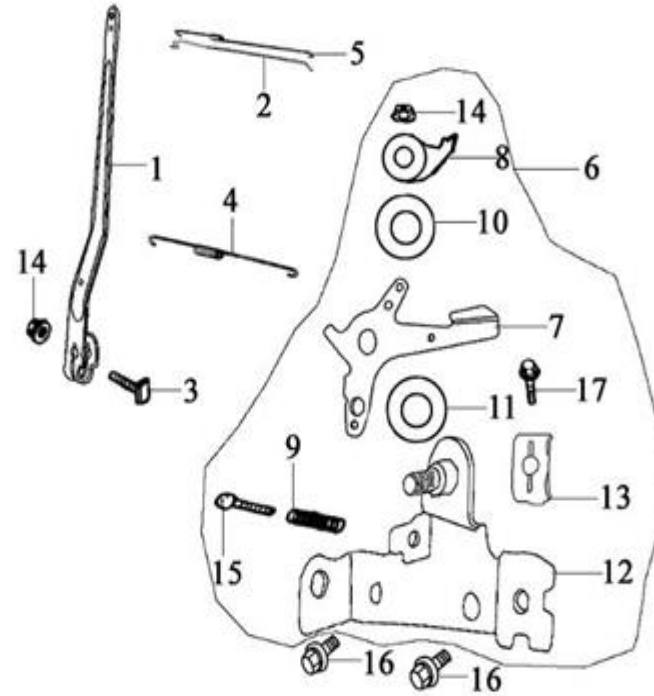
| S/N | Part No |                             |
|-----|---------|-----------------------------|
| 1   | 10-1    | Fan Cover                   |
| 2   | 10-2    | Recoil starter Assy         |
| 3   | 10-3    | Friction spring             |
| 4   | 10-4    | Rope </td                   |
| 5   | 10-5    | Shoulder screw              |
| 6   | 10-6    | Recoil Spring/Spiral spring |
| 7   | 10-7    | Ratchet                     |
| 8   | 10-8    | Guide Plate                 |
| 9   | 10-9    | Rope Reel                   |
| 10  | 10-10   | Starter Handle              |
| 11  | 10-11   | Starter Cover               |
| 12  | 10-12   | N/A                         |
| 13  | 10-13   | Engine switch               |
| 14  | 10-14   | Bolt M6×10                  |
| 15  | 10-15   | Bolt M6×14                  |
| 16  | 10-16   | Ratchet Spring              |



## GE-100 GOVERNING CONTROL SYSTEM

| S/N | Part No |                            |
|-----|---------|----------------------------|
| 1   | 11-1    | Governor arm               |
| 2   | 11-2    | Pull-rod, governor         |
| 3   | 11-3    | Lock bolt                  |
| 4   | 11-4    | Return spring              |
| 5   | 11-5    | Assistant spring, governor |
| 6   | 11-6    | Mount, governor            |
| 7   | 11-7    | Handle                     |
| 8   | 11-8    | Positioning plate          |
| 9   | 11-9    | Spring, governor           |
| 10  | 11-10   | Wave washer                |
| 11  | 11-11   | Washer                     |
| 12  | 11-12   | Supporting plate unit      |
| 13  | 11-13   | Pressure plate             |
| 14  | 11-14   | Nut M6 (Self lock)         |
| 15  | 11-15   | Bolt M5×25                 |
| 16  | 11-16   | Bolt M6×14                 |
| 17  | 11-17   | Bolt M5×16                 |

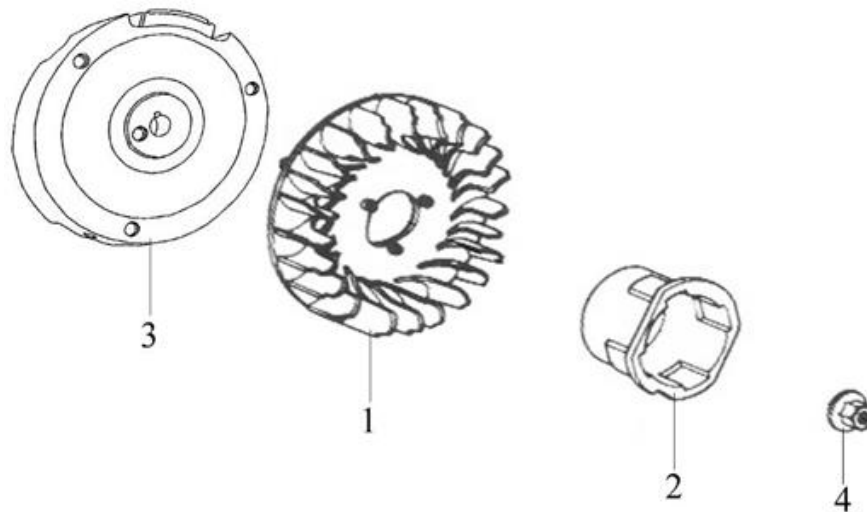
## GROVERNING CONTROL SYSTEM



## GE-100 FLY

| S/N | Part No |                |
|-----|---------|----------------|
| 1   | 12-1    | Fan, flywheel  |
| 2   | 12-2    | Starter Sleeve |
| 3   | 12-3    | Flywheel       |
| 4   | 12-4    | Nut M12×1.25   |

## FLYWHEEL



## 0 IGNITION

| S/N | Part No |                        |
|-----|---------|------------------------|
| 1   | 13-1    | Cap, spark plug        |
| 2   | 13-2    | Cable, engine stop     |
| 3   | 13-3    | Ignition coil sub-assy |
| 4   | 13-4    | Ignition coil          |
| 5   | 13-5    | Bolt M6×25             |

## IGNITION COIL

