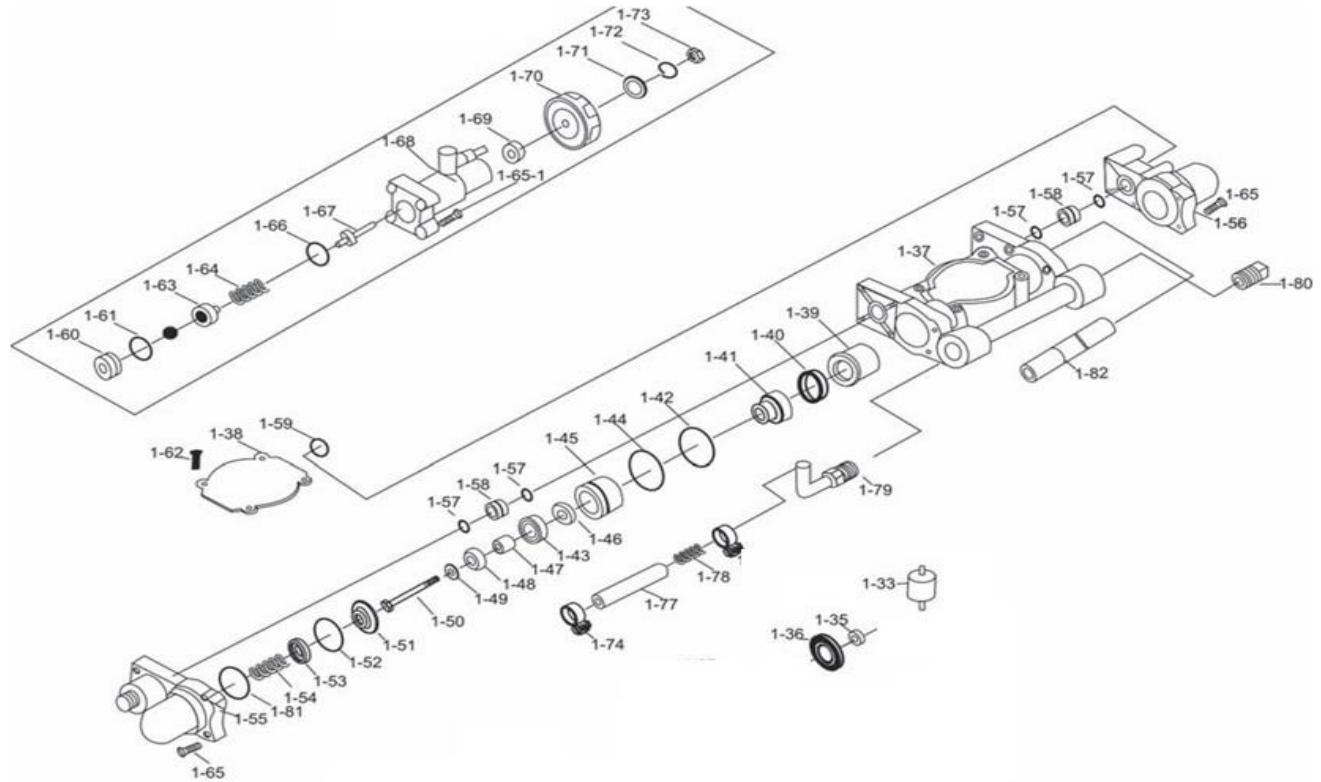


<b>KK-P 768 E</b>		
<b>P.NO</b>	<b>NAME</b>	<b>QTY</b>
33	Rubber Bedding	4
35	Shaft, eccentric	1
36	Bearing 6004	1
37	Cylinder	1
38	Cover dust	1
39	Bush plunger	2
40	water seal	2
41	Seat, water seal	2
42	O-ring 28x2	2
43	Piston	2
44	O-ring 26x2	2
45	Cylinder bushing	2
46	water seal box	2
47	Tube, screw bush	2
48	water seal box	2
49	Washer-5 spring	1
50	M5x30 screw	2
51	Valve seat	2
52	O-ring 26x2	2
53	stopper	2
54	Spring valve	2
55	Discharge metal	1
56	Overflow metal	1
57	O-ring 12*2	4
58	Joint	2
59	O-ring 16x3	1
60	Seat, overflow valve	1
61	O-ring 18x2.5	1
62	Hex bolt M6X50	4



63	Under metal	1
64	Spring	1
65	Hex bolt M 5X25	8
66	O-ring 13x2	1
67	Regulating screw	1
68	Overflow body	1
69	Fly nut	2
70	Adjusting pan	1
71	eBwasher -8 plain	1
72	MB spring, washer	1
73	MB nut M 8	1
79	Joint	1
80	Plug hole	1
81	O-ring 30x2.5	2
82	Plunger	1
83	N/A	2
84	Frame-Metal	1