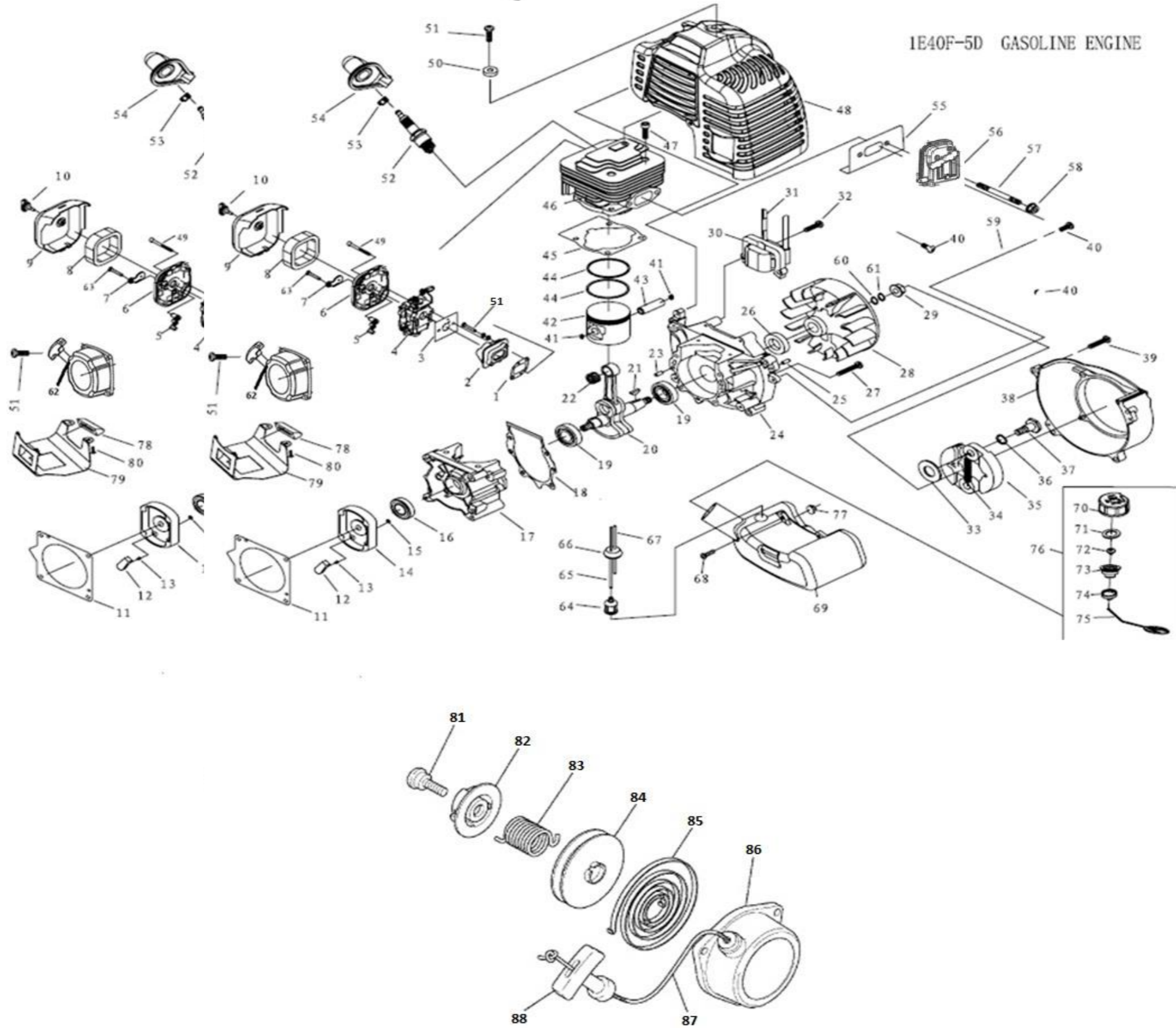


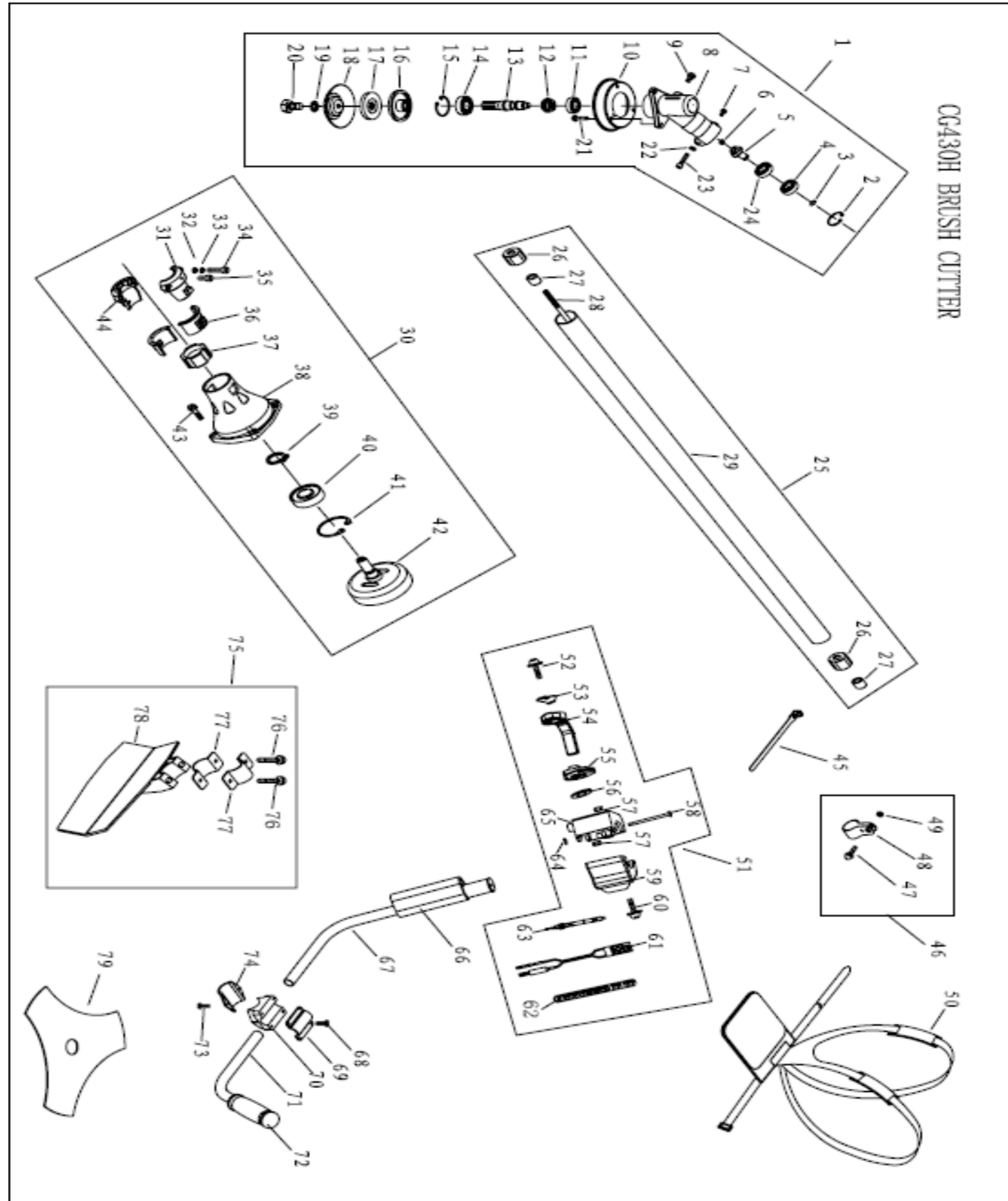
Part.No	Part Name	8640 Engine
1	Gasket-Insulator	
2	Insulator	
3	Gasket-Carburetor	
4	Carburetor	
5	Choker Handle	
6	Air Cleaner Inside Cover	
7	Choker	
8	Air Filter Sponge	
9	Air Cleaner outside cover	
10	Screw-Air Filter	
11	Gasket -Starter	
12	Start Claw	
13	Claw Spring	
14	Start Reel	
15	E-Ring 4	
16	Oil Seal Small-12x22x7	
17	Crank Case Small	
18	Gasket-Crank Case	
19	Bearing 6202	
20	Crank Shaft Assy	
21	Key3x5x13-CrankShaft	
22	Needle Bearing -Piston Pin	
23	Pin B5x12-Crank Case	
24	Crank Case-Big	
25	Pin B4x10-Fan Cover	
26	Oil Seal Big-15x30x7	
27	Screw M5x30 -Allen	
28	Fly Wheel	
29	Nut M8 -Flanged Hex	
30	Ignition Coil	
31	Cord Comp-Wire	
32	Screw M5x20 - Hex	
33	Washer B-Clutch	
34	Spring-Clutch	
35	Clutch Shoe Assy	
36	Washer A-Clutch	
37	Clutch Bolt	
38	Fan Cover	
39	Screw M5x25 -Hex	
40	Screw M5x12 -Star	
41	CirClip -Piston Pin	
42	Piston	
43	Piston Pin	
44	Piston Ring	
45	Gasket-Cylinder	
46	Cylinder	
47	Screw M5x20 -Allen	
48	Guide Cover -Assy	
49	Screw M5x50- Star	



50	Gasket-Guide Cover
51	Screw M5x20-Star
52	Spark Plug
53	Spring-Spark Plug
54	Cap-Spark Plug
55	Gasket –Muffler
56	Muffler
57	Screw- M6x55 Allen
58	Nut M6 -Flanged Hex
59	Clip Board
60	Washer 8-Plain
61	Washer 8-Spring
62	Starter-Assy
63	Screw 4.2x12-Choker
64	Petrol Filter
65	Fuel Pipe-Long
66	Fuel pipe Grommet
67	Fuel pipe-Short
68	Screw M5x16-Star
69	Fuel Tank
70	Buy #76 Fuel Tank Lid Comp
71	Gasket-Fuel Tank Lid
72	Buy #76 Fuel Tank Lid Comp
73	
74	
75	
76	Fuel Tank Lid Comp
77	Cushion -Fuel tank
78	Cushion-Stand
79	Stand -Fuel Tank
80	Screw M 5x16-Star
81	Screw-Ratchet
82	Ratchet-Starter
83	Ratchet -Spring
84	Rope Reel
85	Recoil Spring
86	Starter Cover
87	Starter Rope
88	Starter Handle

Part.No	Part Name 8640 Body
1	Gear Case Assy
2	Stop Ring 28-Inner
3	Stop Ring 12-Outer
4	Bearing 6001 2RS
5	Pinion
6	Steel Plate Cap-Pinion
7	Screw M5x12 –Hex

8	Gear Case
9	Grease Bolt M8x12 –Hex
10	Blade Cover-Plastic
11	Bearing6000
12	Gear
13	Gear Shaft
14	Bearing 6202 -2RZ
15	Stop Ring 35-Inner
16	Holder A
17	Holder B
18	Cover-Metal
19	Washer 8-Star
20	Bolt M8x12 Left thread
21	Screw M5x12 –Star
22	Washer 6-Spring
23	Screw M6x20 -Allen
24	Bearing 6001
25	N/A
26	Rubber Bush-Outer Pipe
27	Oil bearing-Outer Pipe
28	Drive Shaft
29	Outer Pipe-With Bushes
30	Clutch Comp-Assy
31	Clamp A
32	Washer 5-Plain
33	Washer 5-Spring
34	Screw M5x20 -Allen
35	Screw M5x10 -Allen
36	Rubber Cover A
37	Rubber Cover B
38	Linker
39	Stop Ring 15-Outer
40	Bearing 6202-2Rz
41	Stop Ring 35-Inner
42	Clutch Drum
43	Screw M6x20 -Allen
44	Clamp B
45	Wire Clamp
46	Holder Assy
47	Screw M5x20 (STAR)
48	N/A
49	Nut 5
50	Harness Assy
51	Lever Assy
52	Screw M5x30-Allen
53	Washer 5-Plain
54	
55	
56	Buy #51 Lever Assy
57	



58	
59	Box Up-Lever Assy
60	Screw M5x30 star
61	Switch On/ Off
62	Wire Sleeve
63	Throttle Cable
64	N/A
65	Box Down-lever Assy
66	N/A
67	Right Handle
68	Screw M5x16 -Allen
69	Cap Up-Handle
70	Bracket-Handle
71	left handle
72	Handle Rubber Cover
73	Screw M6x20 -Allen
74	Cap Lower-Handle
75	N/A
76	Screw M6x20 -Allen
77	Safety Guard Bracket-Small/Big
78	Safety Guard -Small/Big
79	Blade
80	Tap And Go Stud

	NEW GEAR BOX
	Gear shaft
	Holder -A
	Holder -B
	Nut left Thread
	Sleeve
	Oil Seal 20x35x7
	Cover-Metal