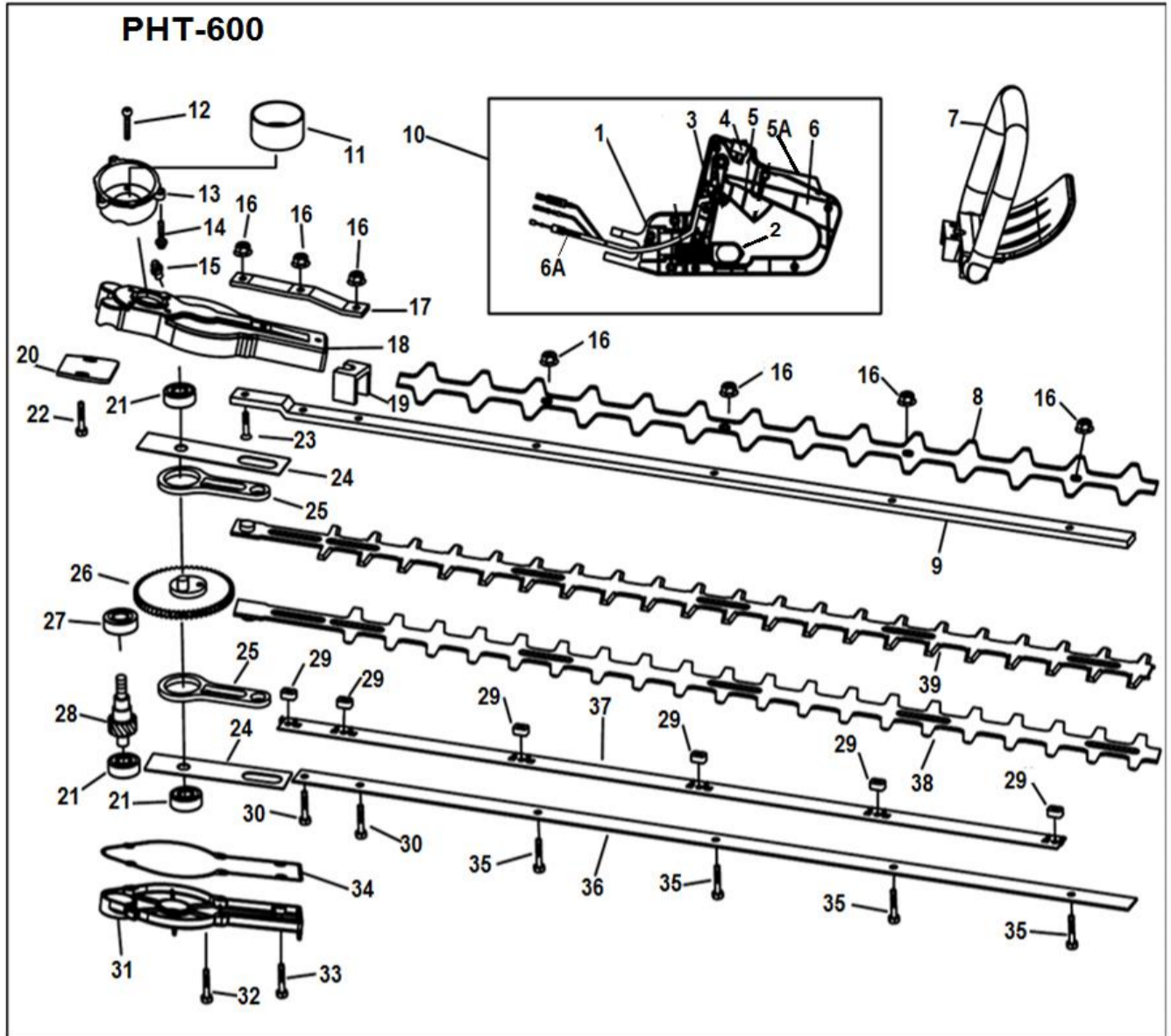
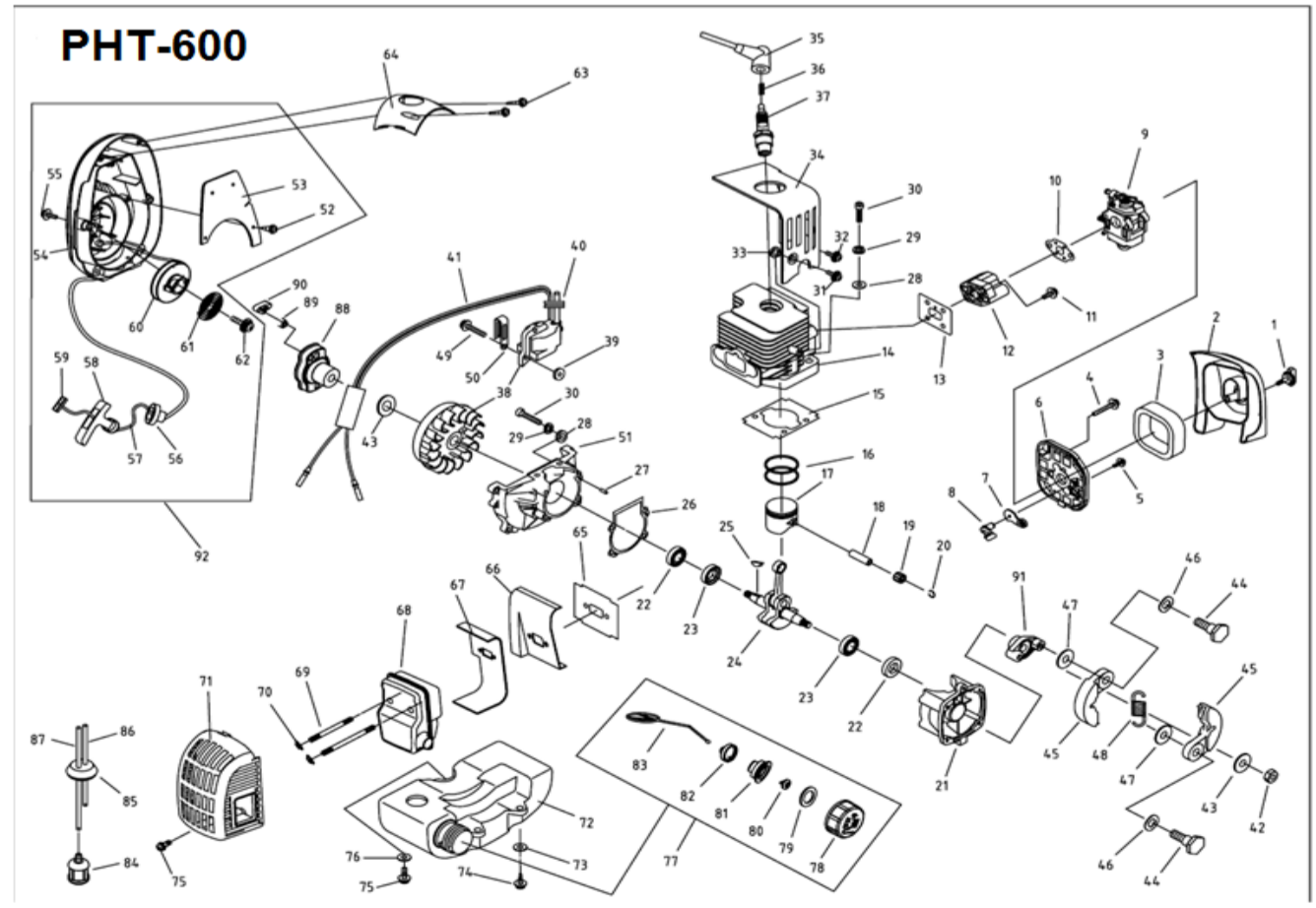


Base

PART- No	KK-PART LIST
B-1	Linker Assy
B-2	Handle Lock Button
B-3	Buy #10
B-4	Stop Button Comp
B-5	Trigger
B-5A	Trigger Control Rack
B-6	Buy #10
B-6A	Throttle Cable
B-7	Front Handle
B-8	Blade Cover (Metal)
B-9	Blade Bracket (Upper)
B-10	Rear Handle Assy
B-11	Clutch Drum
B-12	Screw M5x12-Allen
B-13	Clutch Case
B-14	Screw M5x16-Allen
B-15	Grease Nipple
B-16	Nut M-6 Flanged
B-17	Cusion/Metal Plate
B-18	Gear Case cover (upper)
B-19	Felt
B-20	Metal plate (Rear Handle)
B-21	Bearing 629/P5
B-22	Screw M6x40-Allen/Hex
B-23	Bolt M5x20-Hex
B-24	Support Plate(connecting Rod)
B-25	Connecting Rod
B-26	Gear And Brace Assy
B-27	Bearing 6001-2RS/P5
B-28	Gear Shaft
B-29	Blade Adjusting-Spacer
B-30	Bolt M5x35-Hex
B-31	Gear Case cover (Lower)
B-32	Screw M5x20-Hex
B-33	Screw M5x35-Hex
B-34	Gasket -Gear Case cover
B-35	Bolt M5x25-Hex
B-36	Blade Bracket (Lower)
B-37	N/A
B-38	
B-39	Blade Lower & Upper set



Engine	
PART- No	KK-PART LIST
E-1	Screw air filter
E-2	Air cleaner outside cover
E-3	Air cleaner sponge
E-4	Screw 5x55 Star/Allen
E-5	Screw (Choker)
E-6	Air cleaner inside cover
E-7	Choker
E-8	Choker handle
E-9	Carburator
E-10	Gasket (Carburator)
E-11	Screw
E-12	Insulator
E-13	Gasket(Insulator)
E-14	Cylinder
E-15	Gasket (Cylinder)
E-16	piston Rings
E-17	Piston
E-18	Piston pin
E-19	Needle bearing(piston Pin)
E-20	Circlip(piston pin)
E-21	Crankcase(Small)
E-22	Oil seal 12X22X7
E-23	Bearing
E-24	Crank shaft
E-25	Key (Crank shaft)
E-26	Gasket (Crankcase)



E-27	Pin
E-28	Washer (Plain)
E-29	Washer (Spring)
E-30	Screw (cylinder)
E-31	Screw
E-32	Screw
E-33	Gasket(Guide Cover)
E-34	Guide cover
E-35	Cap (Sparkplug)
E-36	Spring (Sparkplug)
E-37	Sparkplug
E-38	Flywheel
E-39	washer (coil)
E-40	Ignition coil
E-41	Cord Comp-Wire
E-42	Nut M-8(Hex)
E-43	Washer(Plain)
E-44	Clutch Bolt
E-45	Clutch Shoe Assy
E-46	Washer A-Clutch
E-47	Washer B-Clutch
E-48	Spring-Clutch
E-49	Screw (lg-Coil)
E-50	Clamp
E-51	Crankcase(Big)
E-52	Screw (Gasket Starter)
E-53	Gasket(Starter)
E-54	Starter Cover
E-55	Screw 5x20 Star/Allen
E-56	Guide(Starter)
E-57	Starter Rope
E-58	Starter Handle
E-59	Washer (Starter handle)
E-60	Rope reel
E-61	Recoil Spring
E-62	Screw (Starter)
E-63	Screw ST
E-64	Cover (Engine)
E-65	Gasket Small (Muffler)
E-66	Steel Plate(Muffler)
E-67	Gasket Big (Muffler)
E-68	Muffler
E-69	Screw 5x55 Allen (Muffler)
E-70	N/A
E-71	Muffler Cover
E-72	FuelTank
E-73	Washer(Plain)
E-74	Screw ST
E-75	Screw 5x20 star
E-76	Washer(Plain)
E-77	Fuel Tank Cap
E-78	N/A
E-79	Gasket Fuel Tank Lid
E-80	N/A
E-81	N/A
E-82	N/A
E-83	N/A
E-84	Fuel Filter
E-85	Fuel Pipe Grommet
E-86	Fuel Pipe Short
E-87	Fuel Pipe Long
E-88	start reel
E-89	Claw spring
E-90	start claw
E-91	Clutch holder
E-92	Starter Assy