

Qty	KK-P-No	KK-Part Name	
5	E-1	Screw M5x16-Star	
1	E-2	Air Cleaner Outside Cover	
1	E-3	Air Filter Sponge One	
1	E-4	Air Filter Sponge Two	
1	E-5	Air Check Valve-1	
1	E-6	Air Check Valve-2	
1	E-7	Air Check Valve Bracing	
1	E-8	Seperator	
1	E-9	Air Cleaner Inside Cover	
1	E-10	Returning Oil Pipe (7 Inches)	
1	E-11	Wind Pipe(3 Inches)	
1	E-12	Choker	
1	E-13	Choker Handle	
1	E-14	Baffler	
2	E-15	Screw M5x68-Star	
1	E-16	Carburator	
1	E-17	Gasket-Carburator	
10	E-18	Screw M5x16-Allen	
1	E-19	Gasket-Rubber	
4	E-20	Washer 5-Plain	
1	E-21	Eliminating Vane	
2	E-22	Rocker	
2	E-23	Jib	
2	E-24	<b>Jib Seat &amp; Adjusting Nut</b>	
2	E-25		
2	E-26	Air Check valve	
2	E-27	Spring Seat	
2	E-28	Valve Spring	
1	E-29	Input Valve	
1	E-30	Pin-Cam Wheel	
11	E-31	Screw M5x16-Allen	
1	E-32	Side Cover	
1	E-33	Gasket-Side Cover	
2	E-34	Below Rocker	
	E-35	N/A	
1	E-36	Cam Wheel	
1	E-37	Pin-Below Rocker	

1	E-38	Output Valve	
1	E-39	Tie In-	
1	E-40	Rocker Pin	
1	E-41	Copper Pipe-(Breather)	
1	E-42	Cylinder Cover	
	E-43	N/A	
	E-44	N/A	
1	E-45	Insulator	
1	E-46	Gasket-Insulator	
	E-47	N/A	
	E-48	N/A	
1	E-49	Gasket-Cylinder Cover	
1	E-50	Spark Plug	
1	E-51	Spark Plug Protective Cover	
4	E-52	Screw M5x10-Star	
1	E-53	Guide Cover Assy	
1	E-54	Gasket-Muffler	
1	E-55	Muffler	
1	E-56	Muffler Cover	
1	E-57	Washer 5-Plain	
1	E-58	Screw M5x6-Star	
2	E-59	Clip-Pipe	
2	E-60	Screw M5x40-Allen	
2	E-61	Clutch Bolt	
2	E-62	Washer A-Clutch	
1	E-63	Clutch Shoe Assy	
2	E-64	Washer B-Clutch	
1	E-65	Fan Cover	
1	E-66	Screw M6x16-Hex	
1	E-67	Washer-Fly Wheel	
2	E-68	Pin-B4x8	
1	E-69	Cord Comp-Wire	
2	E-70	Screw M4x16-Hex	
1	E-71	Ignition Coil	
1	E-72	Heat Insulation Mat-Coil	
1	E-73		
1	E-74	<b>Piston Rings Set</b>	
1	E-75		
1	E-76	Piston	

2	E-77	Circlip-Piston Pin	
1	E-78	Piston Pin	
1	E-79	Needle Bearing-Piston Pin	
1	E-80	Key C3x8-Crank Shaft	
1	E-81	Oil Seal-12x32x5.5x3	
1	E-82	Check Ring	
1	E-83	Bearing-6201	
1	E-84	Crank Shaft Assy	
1	E-85	Cylinder & Crankcase	
1	E-86	Oil Dip Stick	
1	E-87	O Ring 14x3-Oil Dip Stick	
1	E-88	Reed	
1	E-89	Ball-4	
	E-90	N/A	
1	E-91	Board	
1	E-92	Washer 4-Spring	
1	E-93	Screw M4x10-Allen	
1	E-94	Sump	
1	E-95	O Ring-Air Filter	
1	E-96	Ball Oil Pipe	
1	E-97	Oil Pipe	
1	E-98	Tie In-Oil Pipe	
	E-99	N/A	
	E-100	N/A	
	E-101	N/A	
4	E-102	Screw M5x35-Allen	
1	E-103	Clip-Oil Pipe	
1	E-104	Bearing 6201-2 RS	
1	E-105	Gear	
1	E-106	Oil Seal-10x20x5	
1	E-107	Start Reel	
1	E-108	Starter Assy	
1	E-109	Plug	
1	E-110	Fuel Pipe Short	
1	E-111	Fuel Pipe Grommet	
1	E-112	Petrol Filter	
1	E-113	Fuel Tank Lid	
1	E-114	Gasket-Fuel Tank Lid	
1	E-115	<b>Buy #113</b>	
1	E-116	<b>Buy #113</b>	

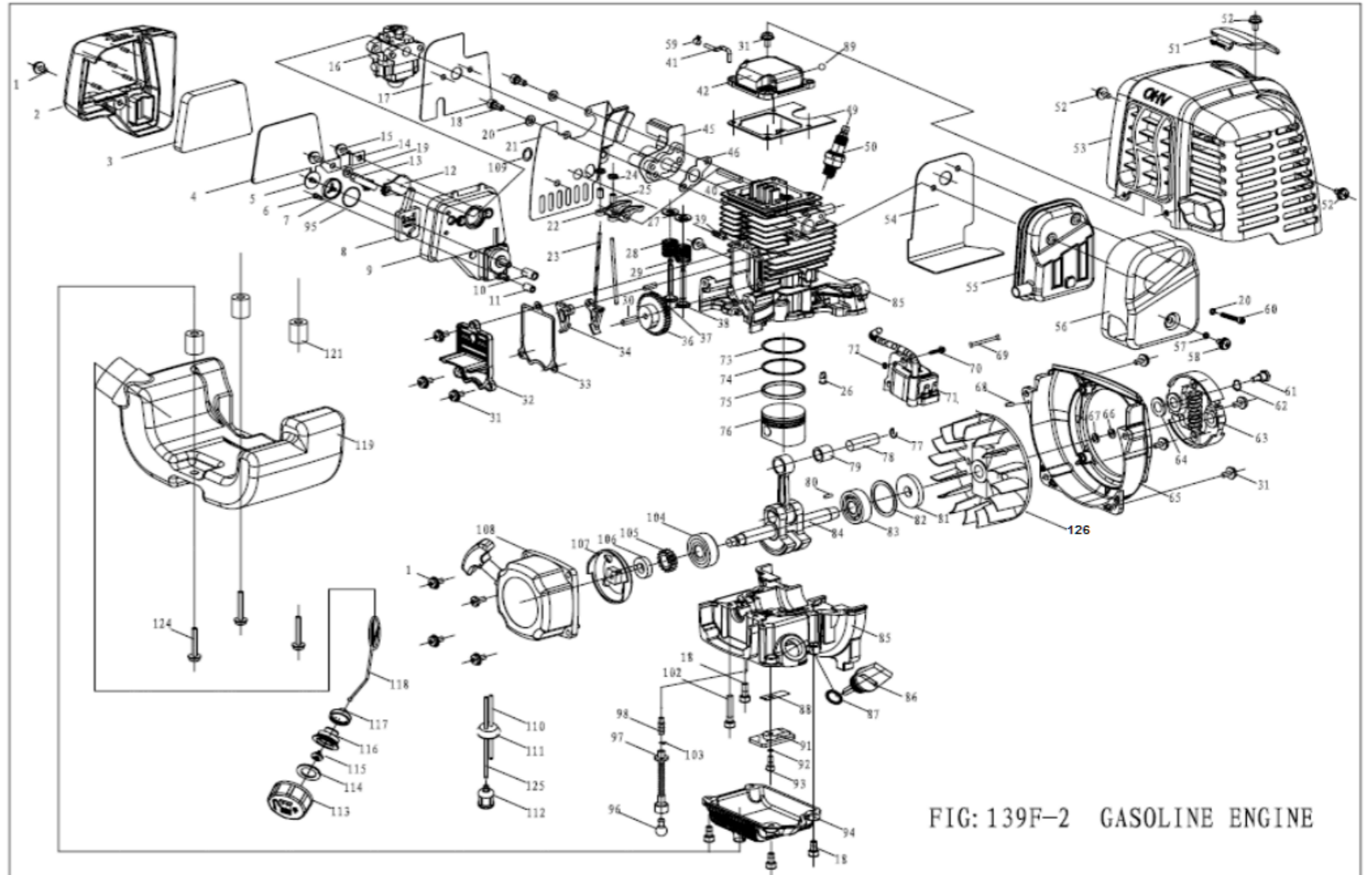


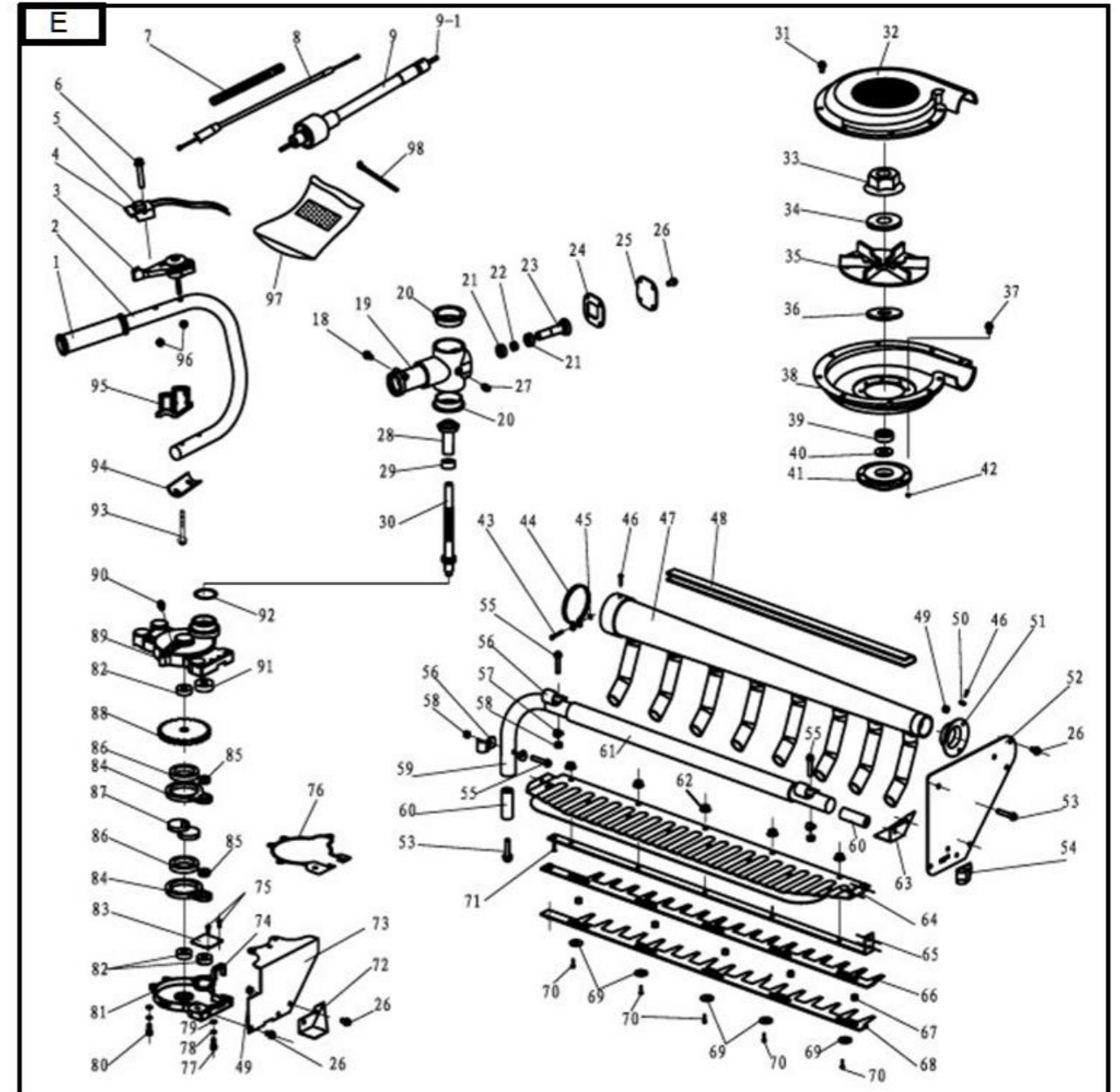
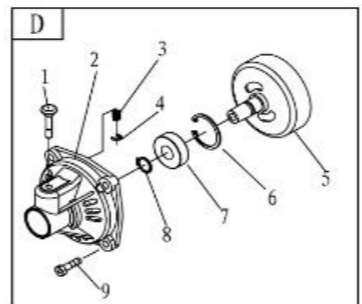
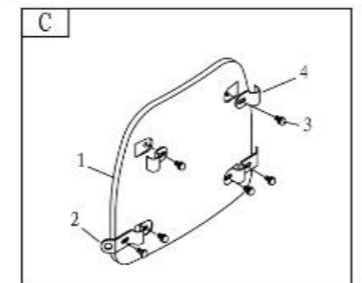
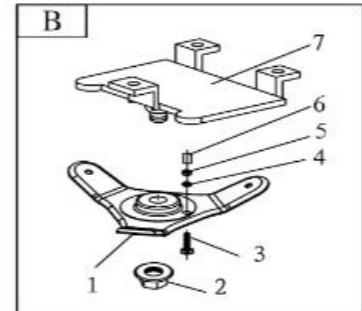
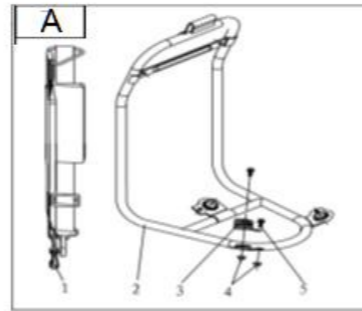
FIG: 139F-2 GASOLINE ENGINE

1	E-117	Buy #113	
1	E-118	Buy #113	
1	E-119	Fuel Tank	
	E-120	N/A	
3	E-121	Metal Tube-Tank	
	E-122	N/A	
	E-123	N/A	
3	E-124	Screw M5x30-Star	
1	E-125	Fuel Pipe Long	
	E-126	Fly Wheel	

	KK-P-No	KK-Part Name	
	<b>A</b>		
1	BA-1	Shoulder Belt Ass'y	
1	BA-2	Shoulder Frame COMP.	
3	BA-3	Spring (Bedding)	
6	BA-4	Nut M6 (Flanged Hex)	
6	BA-5	Screw M6 x 16 (Hex)	
	<b>B</b>		
1	BB-1	Down base	
1	BB-2	Nut M10 (Flanged Hex)	
1	BB-3	Screw M 6x25 (Star)	
1	BB-4	Washer-6 Plain	
1	BB-5	Nut M6	
1	BB-6	N/A	
1	BB-7	Engine Base	
	<b>C</b>		
1	BC-1	Shoulder Plate COMP	
2	BC-2	Holder, Lower	
6	BC-3	Screw M5 x 16 (Hex)	
2	BC-4	Holder, Upper	
	<b>B</b>		
1	<b>BD</b>	Clutch COMP	
1	BD-1	Lock Pin	
1	BD-2	Clutch Case/Linker	
1	BD-3	Spring (Lock Pin)	
1	BD-4	Stop Ring 5 Outer	
1	BD-5	Clutch COMP.	
1	BD-6	Stop Ring 35 Inner	
1	BD-7	Bearing 6202-2RZ/P6	

1	BD-8	Stop Ring 15 Outer	
<b>Qty</b>	<b>E</b>		
1	BE-1	Handle bar sheath/Grip	
1	BE-2	Handle Bar Tube	
1	BE-3	Flex Accelerator	
1	BE-4	Fix Plate-Switch On/Off	
1	BE-5	Switch On/Off	
1	BE-6	Screw M5x30-Star	
1	BE-7	wire sleeve	
1	BE-8	Throttle Cable	
1	BE-9	Protection Seat/Outer Cable	
1	BE-9-1	Inner Cable	
1	BE-10	N/A	
1	BE-11	N/A	
1	BE-12	N/A	
1	BE-13	N/A	
1	BE-14	N/A	
1	BE-15	N/A	
1	BE-16	N/A	
4	BE-17	Screw M6x20-Hex	
1	BE-18	Screw M5x25 Allen	
1	BE-19	Flexible Shaft Seating	
2	BE-20	Cover/Bush Shaft Seating	
2	BE-21	Bearing 6002 2RZ	
1	BE-22	Bush-Gear & Gear Shaft	
1	BE-23	Gear and Gear Shaft Drive	
1	BE-24	Washer/Gasket-Side Plate	
1	BE-25	Side Plate	
16	BE-26	Screw M4x10 Star	
1	BE-27	Cup/Grease Nipple	
1	BE-28	Gear-Shaft	
1	BE-29	Cover/Bush Gear Axis	
1	BE-30	Gear Axis	
9	BE-31	Screw ST M4x12	
1	BE-32	Upper Fan Housing	
1	BE-33	Nut M10-Hex(left thread)	
1	BE-34	Washer 10-Plain	
1	BE-35	Fan Leaflet	
1	BE-36	Fixed Spline Sheath	
8	BE-37	Screw M4x12-Star	

## BODY-TH-4-34



1	BE-38	Down Fan Housing	
1	BE-39	Bearing 6000 2RZ	
1	BE-40	Washer 10-Shim	
1	BE-41	Seat-Fan Housing	
8	BE-42	Nut M4-Nylon	
1	BE-43	Screw M4x25-Star	
1	BE-44	Fixing Ring/screw clip	
1	BE-45	Nut M4-Nylon	
2	BE-46	Screw ST 3.5x9.5	
1	BE-47	Wind Pipe	
1	BE-48	N/A	
8	BE-49	Nut M4	
1	BE-50	Washer-4 plain	
1	BE-51	Fixed Ring-Wind Pipe	
1	BE-52	Side Plate-Right	
2	BE-53	Screw M5x20 Star	
1	BE-54	Bag Hook	
3	BE-55	Screw M5x35 Star	
3	BE-56	Bag Hook	
3	BE-57	Washer Plain Curved	
3	BE-58	Nut M5	
1	BE-59	Long Handle	
2	BE-60	Bush-Long Handle	
1	BE-61	Rack/Grip-Long Handle	
5	BE-62	Nut-M5 Nylon	
1	BE-63	Guide Plate-Right	
1	BE-64	Plate Comp	
1	BE-65	Blade Edge Press Piece	
1	BE-66	Blade Upper	
5	BE-67	Blade Adjusting-Spacer	
1	BE-68	Blade Lower	
5	BE-69	Washer (BLADE)	
5	BE-70	Screw m5x16 HEX	
1	BE-71	Screw M4x12 Star (CS)	
1	BE-72	Guide Plate-Left	
1	BE-73	Side Plate-Left	
1	BE-74	Plate	
2	BE-75	Screw M3x8-Star	
1	BE-76	Gasket Gearcase	
2	BE-77	Screw M5x25 Star	

6	BE-78	N/A	
6	BE-79	N/A	
4	BE-80	Screw M5x20 Allen	
1	BE-81	Gear Box Lower	
3	BE-82	Bearing 608	
1	BE-83	Washer/Steel Plate	
2	BE-84	Connecting Cover/Rod	
2	BE-85	Bearing 618	
2	BE-86	Bearing 6806 Z	
1	BE-87	Cam	
1	BE-88	Gear	
1	BE-89	Gear Box Upper	
1	BE-90	Grease Nipple	
1	BE-91	Bearing 6001 2RZ	
1	BE-92	O' Washer-Gear Box Upper	
2	BE-93	Screw M6x35 Hex/Star	
1	BE-94	Plate-Handle	
1	BE-95	Gasket/Bracket-Handle	
2	BE-96	Nut M5	
1	BE-97	Bag tea leaf collecting	
4	BE-98	N/A	