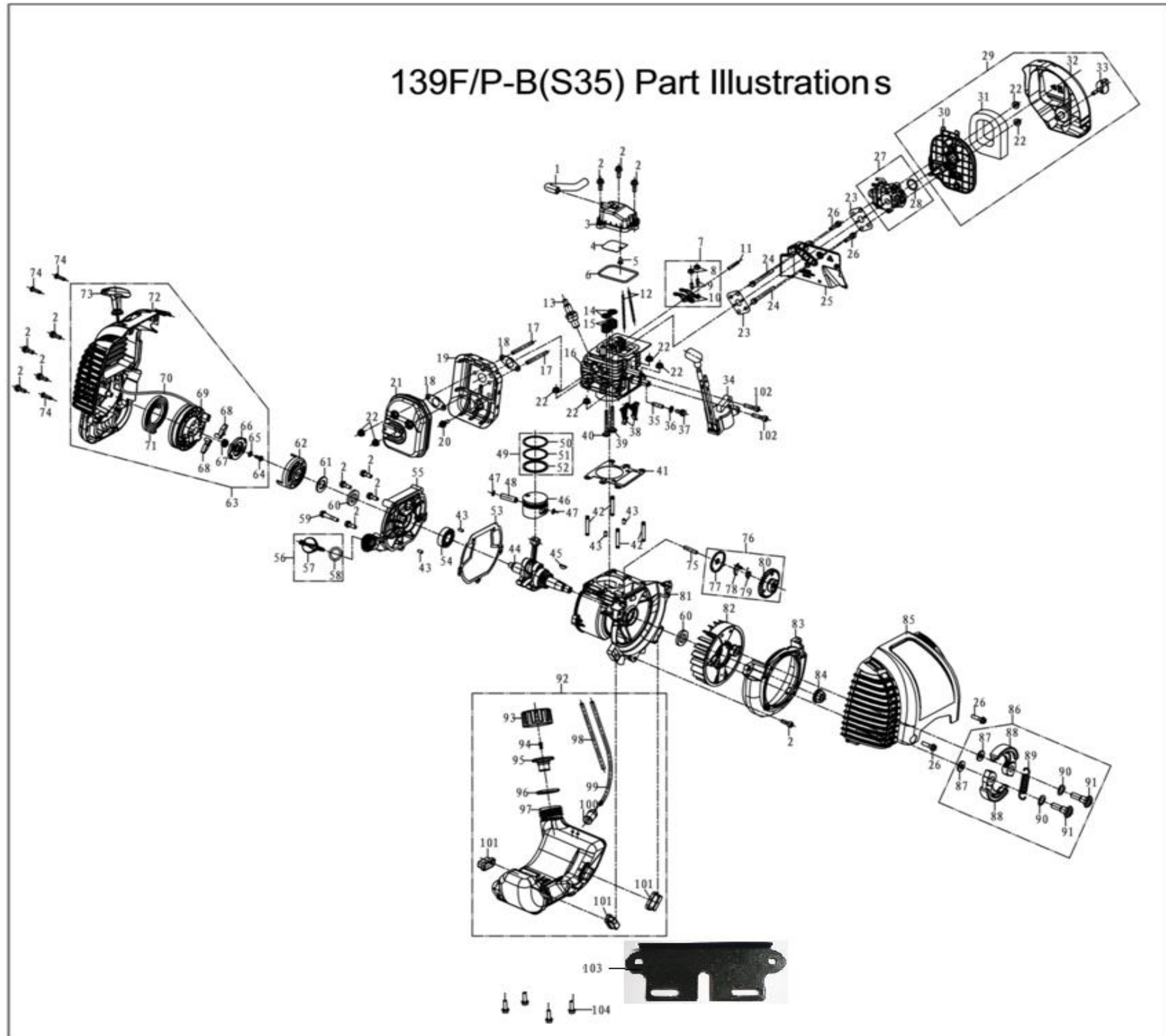


KK-KPS-204/P764

PART NO	NAME	QTY
E-1	Breather hose	1
E-2	Screw M5 x 15 Allen	12
E-3	Cylinder head cover	1
E-4	oil board	1
E-5	Screw ST4.2 x 10	1
E-6	Cylinder cover sealing ring	1
E-7	Rocker arm assy	2
E-8	Rocker adjust nut	2
E-9	Rocker adjust screw	2
E-10	Rocker arm	2
E-11	Rocker pin	1
E-12	Push rod	2
E-13	Spark plug	1
E-14	Valve spring retainer	2
E-15	Valve spring	2
E-16	Cylinder	1
E-17	Stud M5 x 54	2
E-18	Gasket muffler	2
E-19	Muffler cover	1
E-20	Screws M5 x 10 Allen	1
E-21	Muffler assy	1
E-22	Nut M5 Flanged	8
E-23	Gasket carburator/insulator	2
E-24	Screw M5 x 55 Hex	2
E-25	Insulator	1
E-26	Screw M 5x20 Allen	4
E-27	Carburator	1
E-28	O-RING (CARBURETOR)	1
E-29	N/A	1
E-30	Air Filter Inside Cover	1
E-31	Air Filter Sponge	1
E-32	AIR Filter Out Side Cover	1
E-33	Screw Air Filter	1
E-34	Ignition coil	1
E-35	Pin Push rod guide	1
E-36	Copper washer 6x12x1	1
E-37	Screw M 6x10 Hex	1
E-38	Push rod guide	2
E-39	Intake valve	1
E-40	Exhaust valve	1
E-41	Gasket cylinder	1
E-42	Studs M5 x 30	4
E-43	Dowel pin φ4×8	4
E-44	Crankshaft assy	1
E-45	Key crankshaft	1
E-46	Piston	1
E-47	Circlip piston pin	2
E-48	Piston pin	1

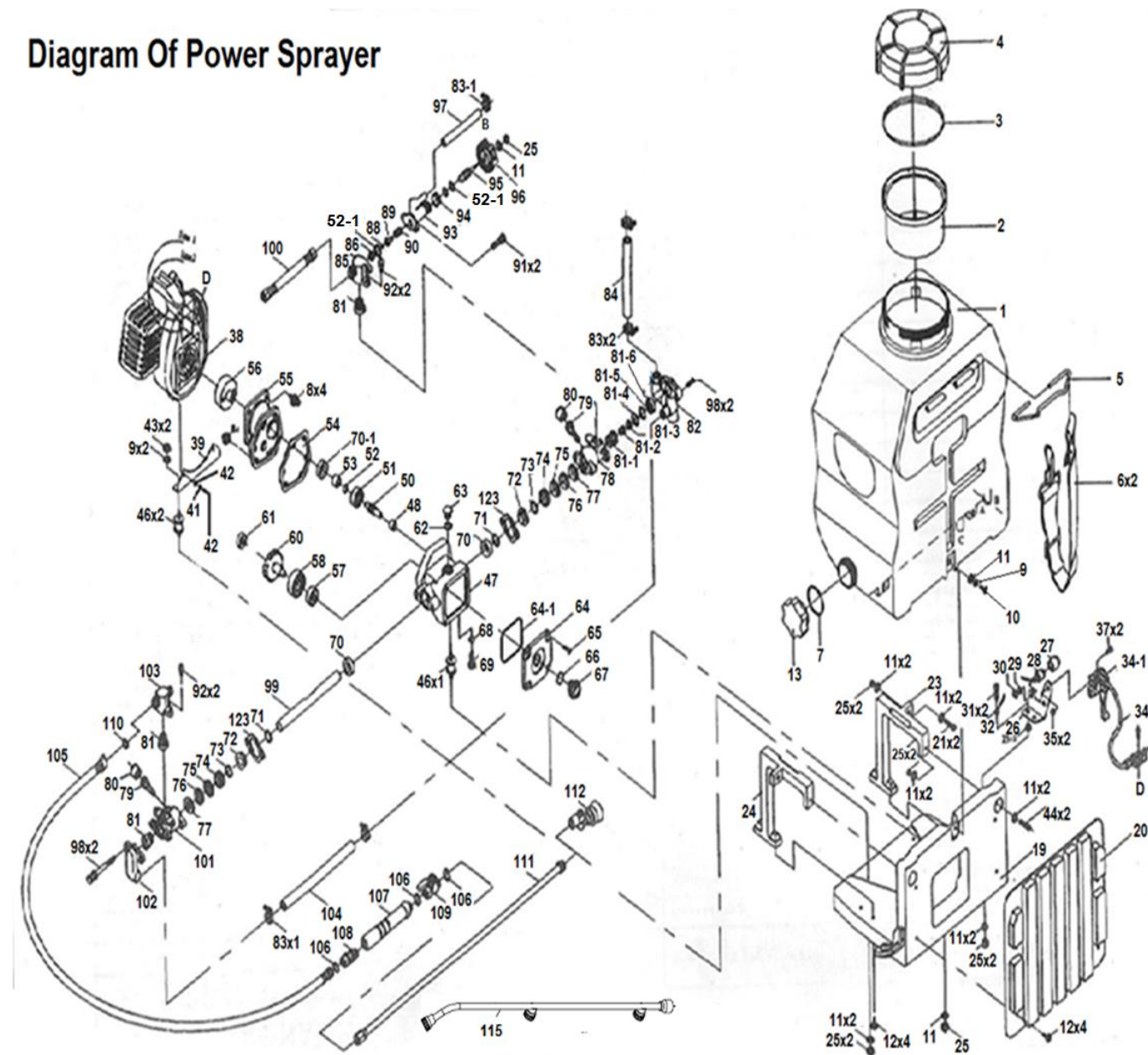


E-49	Piston rings set	1
E-50	BUY # 49	1
E-51		1
E-52		1
E-53		Gasket crankcase
E-54	Bearing - 6002	1
E-55	Crankcase (SMALL)	1
E-56	Dipstick Assy	1
E-57	N/A	
E-58	O-RING Dipstick	1
E-59	Screws M5 x 28 Allen	1
E-60	Oil seal 15x26x5	2
E-61	Washer M 8 Flat	1
E-62	Starter reel	1
E-63	Starter assy	1
E-64	Screw Ratchet guide	1
E-65	Washer Ratchet guide	1
E-66	Ratchet guide	1
E-67	Center spring (Starter)	2
E-68	Ratchet starter	2
E-69	Rope reel	1
E-70	Starter Rope	1
E-71	Recoil spring	1
E-72	Starter cover	1
E-73	Starter Handle	1
E-74	Screw ST4.2 x 19	3
E-75	Pin Cam wheel	1
E-76	Cam wheel kit	1
E-77	Washer Cam wheel	1
E-78	Release valve(CAM WHEEL)	1
E-79	Return Spring(Release valve)	1
E-80	Cam wheel	1
E-81	Crankcase (BIG)	1
E-82	Fly wheel	1
E-83	Fan cover	1
E-84	Nut M10 x 1.25 Flanged	1
E-85	Guide cover	1
E-86	Clutch shoe assy	1
E-87	Washer-B (CLUTCH)	1
E-88	N/A	
E-89	Spring(CLUTCH)	1
E-90	Washer-A (CLUTCH)	1
E-91	Clutch Bolt	2
E-92	Fuel tank assy	1
E-93	Fuel tank cap assy	1
E-94	BUY-93	1
E-95		1
E-96	Gasket tank cap cap	1
E-97	N/A	
E-98	Fuel pipe(SHORT)	1

E-99	FUEL pipe (LONG)	1
E-100	Petrol filter	1
E-101	Cushion fuel tank	3
E-102	N/A	2
E-103	Engine stand	1
E-104	N/A	4

Part No.	Part Name (Body)	Part No.	Part Name (Body)
1	Chemical Tank 708	65	Screw -Crank Case Cover
1	Chemical Tank 800	66	'O' Ring -Oil Glass
2	Stainer (Big)-Chemical Tank	67	Oil Glass
3	Gasket-Chemical Tank Lid	68	'O' Ring -Oil Drain Bolt
4	Chemical Tank Lid	69	Oil Drain Bolt
5	Belt Holder	70	Oil Seal -18x28x8
6	Shoulder Belt	70-1	Oil Seal -18x28x8
7	Gasket -Drain Cap	71	'O' ring-Plunger
8	Screw M6x18-Hex	72	Adjusting Ring
9	Washer 6-Spring	73	Grease Seal
10	S T Screw	74	Grease Ring
11	Washer 6-Plain	75	V-Packing
12	Screw M6x25-Star	76	N/A
13	Drain Cap-Chemical Tank	77	V-Packing Seat
19	Frame 708/800	78	Cylinder-Right
19	Frame-Metal 768	79+80	Grease Cup
20	Rubber Pad	81	Valve Assy
21	Screw M6x18-Hex	82	Suction Chamber-Right
23	Right Stand	83	Clip-L
24	Left Stand	83-1	Clip-S
25	Nut M6-Nylon	84	Suction Hose-5" 708/800
26	Fixed Plate-Flex Accelerator	84	Suction Hose-2.5Mts 768
28	Switch On/Off	85	Outlet Chamber -Right
30	Nut M8-Hex	86	Steel Ball Seat
31	Screw M6x18-Hex	88	Steel Ball
32	Cord Comp-Wire	89	Pressure Valve Rod
33	N/A	90	Relief Valve Spring
34	Throttle Cable	91	Screw M6x18-Hex
34-1	Flex Accelerator	92	Screw M6x18-Hex
35	Nut M6-Nylon	93	Relief valve Body
37	Screw M6x18-Hex	94	Brass Nut-Relief Valve
38	N/A	95	Relief Valve Screw
39	Engine Stand	96	Pressure Adjusting Knob
40	Washer 5-Plain	97	Over Flow Hose-5" 708/800
41	Washer 5-Spring	97	Over Flow Hose-2.5Mts 768
42	Screw M5x25-Allen	98	Screw M6x75-Hex
43	Nut M6-Nylon	99	Plunger
46	Joint-S	100	High Pressure Hose -Small
46-1	Joint-L	101	Cylinder-Left

Diagram Of Power Sprayer



47	Crank Case	102	Suction Chamber-Left
48	Needle Bearing-For Shaft	103	Outlet Chamber-Left
50	Shaft	104	Suction Hose-9"
51	Bearing-6201	105	High Pressure Hose -Big
52	'O' Ring-Steel Pipe	106	Packing -Handle/Spray Rod
52-1	'O' Ring-(Relief Valve/Ball Seat)	107	Hose Pipe Handle
53	Steel Pipe	108	N/A
54	Gasket-Drum Case	109	Ball Cock-One Way
55	Drum Case	110	Packing-High Pressure Hose
56	Clutch Drum	111	Spray Rod
57	Bearing-6200	115	Nozzle(3 Hole)
58	Bearing-6203	123	Fixed Plane
59	N/A		
60	Gear		
61	Bearing-608		
62	'O' Ring-Oil Inlet Bolt		
63	Oil Inlet Bolt		
64	Crank Case Cover		
64-1	'O' Ring -Crank Case Cover		