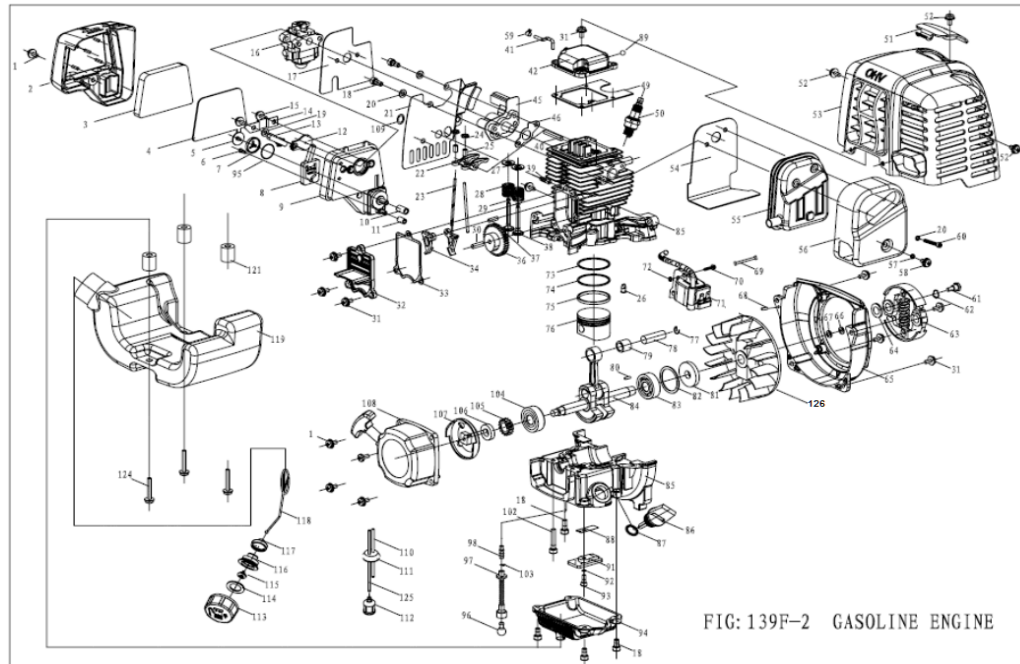


<b>ENG</b>	<b>SBC - 3404</b>		
<b>S.NO</b>	<b>KK-P-No</b>	<b>KK-Part Name</b>	<b>Qty</b>
1	E-1	Screw M5x16-Star	5
2	E-2	Air Cleaner Outside Cover	1
3	E-3	Air Filter Sponge One	1
4	E-4	Air Filter Sponge Two	1
5	E-5	Air Check Valve-1	1
6	E-6	Air Check Valve-2	1
7	E-7	Air Check Valve Bracing	1
8	E-8	Seperator	1
9	E-9	Air Cleaner Inside Cover	1
10	E-10	Returning Oil Pipe (7 Inches)	1
11	E-11	Wind Pipe(3 Inches)	1
12	E-12	Choker	1
13	E-13	Choker Handle	1
14	E-14	Baffler	1
15	E-15	Screw M5x68-Star	2
16	E-16	Carburator	1
17	E-17	Gasket-Carburator	1
18	E-18	Screw M5x16-Allen	10
19	E-19	Gasket-Rubber	1
20	E-20	Washer 5-Plain	4
21	E-21	Eliminating Vane	1
22	E-22	Rocker	2
23	E-23	Jib	2

24	E-24	<b>Jib Seat &amp; Adjusting Nut</b>	2
25	E-25		2
26	E-26	Air Check valve	2
27	E-27	Spring Seat	2
28	E-28	Valve Spring	2
29	E-29	Input Valve	1
30	E-30	Pin-Cam Wheel	1
31	E-31	Screw M5x16-Allen	11
32	E-32	Side Cover	1
33	E-33	Gasket-Side Cover	1
34	E-34	Below Rocker	2
35	E-35	N/A	
36	E-36	Cam Wheel	1
37	E-37	Pin-Below Rocker	1
38	E-38	Output Valve	1
39	E-39	Tie In-	1
40	E-40	Rocker Pin	1
41	E-41	Copper Pipe-(Breather)	1
42	E-42	Cylinder Cover	1
43	E-43	N/A	
44	E-44	N/A	
45	E-45	Insulator	1
46	E-46	Gasket-Insulator	1
47	E-47	N/A	
48	E-48	N/A	
49	E-49	Gasket-Cylinder Cover	1

50	E-50	Spark Plug	1
51	E-51	Spark Plug Protective Cover	1
52	E-52	Screw M5x10-Star	4
53	E-53	Guide Cover Assy	1
54	E-54	Gasket-Muffler	1
55	E-55	Muffler	1
56	E-56	Muffler Cover	1
57	E-57	Washer 5-Plain	1
58	E-58	Screw M5x6-Star	1
59	E-59	Clip-Pipe	2
60	E-60	Screw M5x40-Allen	2
61	E-61	Clutch Bolt	2
62	E-62	Washer A-Clutch	2
63	E-63	Clutch Shoe Assy	1
64	E-64	Washer B-Clutch	2
65	E-65	Fan Cover	1
66	E-66	Screw M6x16-Hex	1
67	E-67	Washer-Fly Wheel	1
68	E-68	Pin-B4x8	2
69	E-69	Cord Comp-Wire	1
70	E-70	Screw M4x16-Hex	2
71	E-71	Ignition Coil	1
72	E-72	Heat Insulation Mat-Coil	1
73	E-73		1
74	E-74	<b>Piston Rings Set</b>	1
75	E-75		1



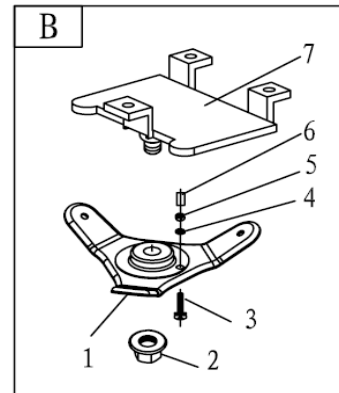
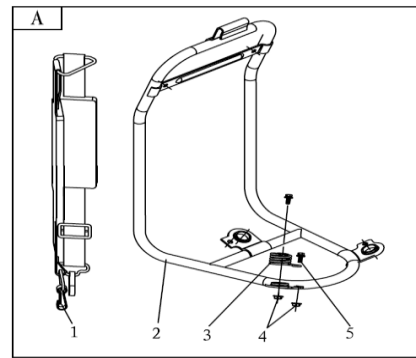
76	E-76	Piston	1
77	E-77	Circlip-Piston Pin	2
78	E-78	Piston Pin	1
79	E-79	Needle Bearing-Piston Pin	1
80	E-80	Key C3x8-Crank Shaft	1
81	E-81	Oil Seal-12x32x5.5x3	1
82	E-82	Check Ring	1
83	E-83	Bearing-6201	1
84	E-84	Crank Shaft Assy	1
85	E-85	Cylinder & Crankcase	1
86	E-86	Oil Dip Stick	1
87	E-87	O Ring 14x3-Oil Dip Stick	1
88	E-88	Reed	1
89	E-89	Ball-4	1
90	E-90	N/A	
91	E-91	Board	1
92	E-92	Washer 4-Spring	1
93	E-93	Screw M4x10-Allen	1
94	E-94	Sump	1
95	E-95	O Ring-Air Filter	1
96	E-96	Ball Oil Pipe	1
97	E-97	Oil Pipe	1
98	E-98	Tie In-Oil Pipe	1
99	E-99	N/A	
100	E-100	N/A	
101	E-101	N/A	

102	E-102	Screw M5x35-Allen	4
103	E-103	Clip-Oil Pipe	1
104	E-104	Bearing 6201-2 RS	1
105	E-105	Gear	1
106	E-106	Oil Seal-10x20x5	1
107	E-107	Start Reel	1
108	E-108	Starter Assy	1
109	E-109	Plug	1
110	E-110	Fuel Pipe Short	1
111	E-111	Fuel Pipe Grommet	1
112	E-112	Petrol Filter	1
113	E-113	Fuel Tank Lid	1
114	E-114	Gasket-Fuel Tank Lid	1
115	E-115	<b>Buy #113</b>	
116	E-116	<b>Buy #113</b>	
117	E-117	<b>Buy #113</b>	
118	E-118	<b>Buy #113</b>	
119	E-119	Fuel Tank	
120	E-120	N/A	
121	E-121	Metal Tube-Tank	3
122	E-122	N/A	
123	E-123	N/A	
124	E-124	Screw M5x30-Star	3
125	E-125	Fuel Pipe Long	1
126	E-126	Fly Wheel	

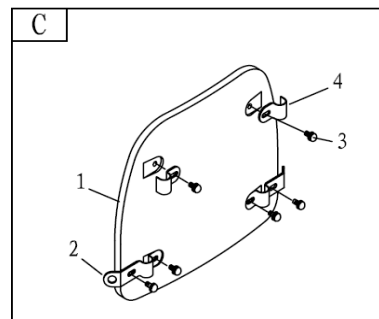
S.NO	KK-P-No	KK-Part Name	Qty
<b>A</b>			
1	BA-1	Shoulder Belt Ass'y	1
2	BA-2	Shoulder Frame COMP.	1
3	BA-3	Spring (Bedding)	3
4	BA-4	Nut M6 (Flanged Hex)	6
5	BA-5	Screw M6 x 16 (Hex)	6

### B

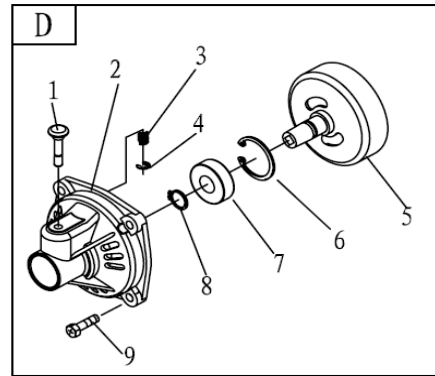
S.NO	KK-P-No	KK-Part Name	Qty
<b>B</b>	<b>B</b>		
1	BB-1	Down base	1
2	BB-2	Nut M10 (Flanged Hex)	1
3	BB-3	Screw M 6x25 (Star)	1
4	BB-4	Washer-6 Plain	1
5	BB-5	Nut M6	1
6	BB-6	N/A	1
7	BB-7	Engine Base	1



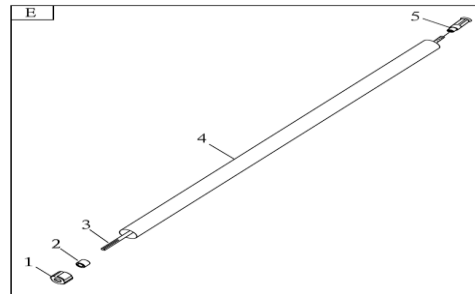
S.NO	KK-P-No	KK-Part Name	Qty
<b>C</b>	<b>C</b>		
1	BC-1	Shoulder Plate COMP	1
2	BC-2	Holder, Lower	2
3	BC-3	Screw M5 x 16 (Hex)	6
4	BC-4	Holder, Upper	2



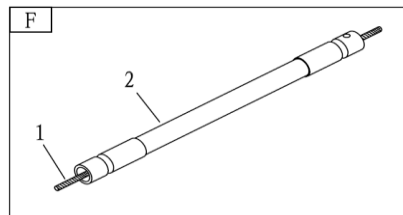
S.NO	KK-P-No	KK-Part Name	Qty
<b>D</b>	BD	Clutch COMP	1
1	BD-1	Lock Pin	1
2	BD-2	Clutch Case/Linker	1
3	BD-3	Spring (Lock Pin)	1
4	BD-4	Stop Ring 5 Outer	1
5	BD-5	Clutch COMP.	1
6	BD-6	Stop Ring 35 Inner	1
7	BD-7	Bearing 6202-2RZ/P6	1
8	BD-8	Stop Ring 15 Outer	1



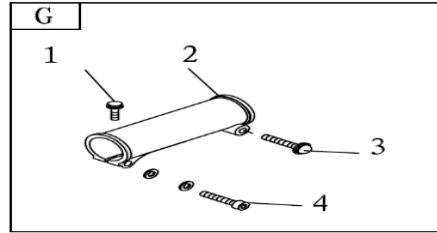
S.NO	KK-P-No	KK-Part Name	Qty
<b>E</b>			1
1	BE-1	Rubber Bush (Outer Pipe)	4
2	BE-2	Oil-bearing	4
3	BE-3	Drive Shaft	1
4	BE-4	Outer Pipe With Bush	1
5	BE-5	Adapter Comp.	1



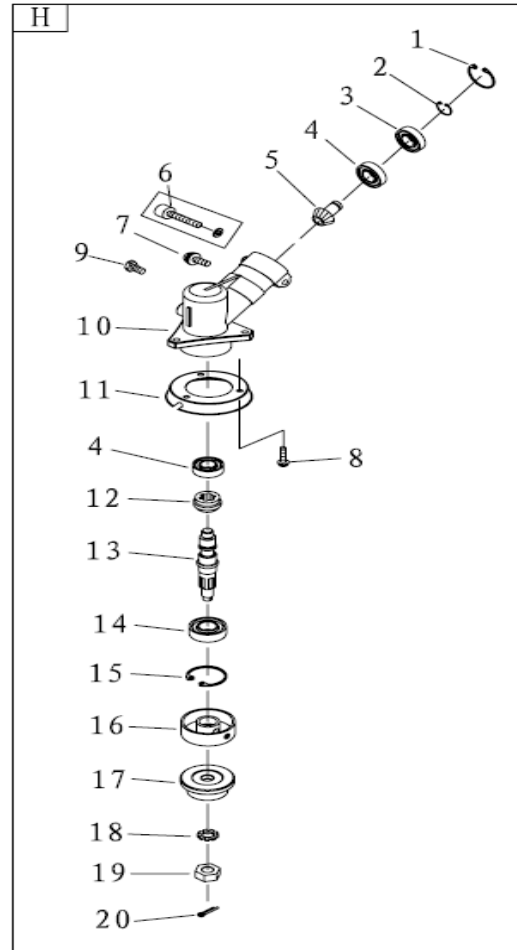
S.NO	KK-P-No	KK-Part Name	Qty
<b>F</b>	<b>F</b>		
1	BF-1	Flexible Shaft/Inner Cable	1
2	BF-2	Flexible Liner COMP.	1



S.NO	KK-P-No	KK-Part Name	Qty
<b>G</b>	<b>G</b>		
1	BG-1	Screw M5 x 12 (Allen)	1
2	BG-2	Joint Pipe	1
3	BG-3	Screw M5 x 30(Star)	1
4	BG-4	Screw M5 x 20 (Allen)	1



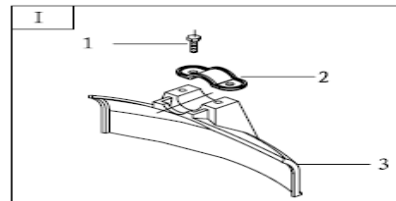
S.NO	KK-P-No	KK-Part Name	Qty
<b>H</b>	<b>BH</b>	Gear Case Assy	
1	BH-1	Stop Ring 26-Inner	1
2	BH-2	Stop Ring 10-Outer	1
3	BH-3	Bearing 6000- 2 RS	1
4	BH-4	Bearing-6000	2
5	BH-5	Pinion	1
6	BH-6	Screw M6x20-Allen	1
7	BH-7	Screw M5x12-Hex	1
8	BH-8	Screw M5x12-Hex	3
9	BH-9	Grease Bolt-M5x12	1
10	BH-10	Gear Case	1
11	BH-11	Blade Cover	1
12	BH-12	Gear	1
13	BH-13	Gear Shaft	1
14	BH-14	Bearing 6002-2 RS	1
15	BH-15	Stop Ring 32-Inner	1



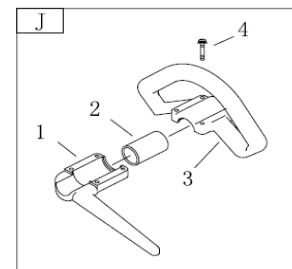


16	BH-16	Holder-A	1
17	BH-17	Holder-B	1
18	BH-18	Washer 10-Star	1
19	BH-19	Nut M10-Left Thread	1
20	BH-20	Split Pin 2x16	1

S.NO	KK-P-No	KK-Part Name	Qty
I	I		1
1	BI-1	Screw M6 x 25 (Hex)	2
2	BI-2	Safety Guard Bracket	1
3	BI-3	Safety Guard	1

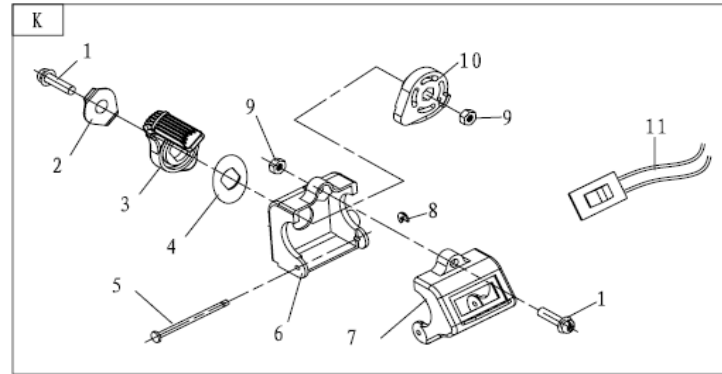


S.NO	KK-P-No	KK-Part Name	Qty
J	J		
1	BJ-1	Cap,Lower	1
2	BJ-2	Holder Rubber Cover	1
3	BJ-3	Holder	1
4	BJ-4	Screw M5 x 30(Allen)	4



S.NO	KK-P-No	KK-Part Name	Qty
K	BK	Lever ASS'Y	
1	BK-1	Screw M5 x 20(Star)	2
2	BK-2	N/A	1
3	BK-3	N/A	1

4	BK-4	N/A	1
5	BK-5	N/A	1
6	BK-6	N/A	1
7	BK-7	N/A	1
8	BK-8	N/A	1
9	BK-9	Nut M5	2
10	BK-10	N/A	1
11	BK-11	Switch On/Off	1



S.NO	KK-P-No	KK-Part Name	Qty
L	BL		1
M	BM	Throttle Wire Assy	1
N	BN	Wire Sleeve	1
P	BP	Wire Clamp Band	3

