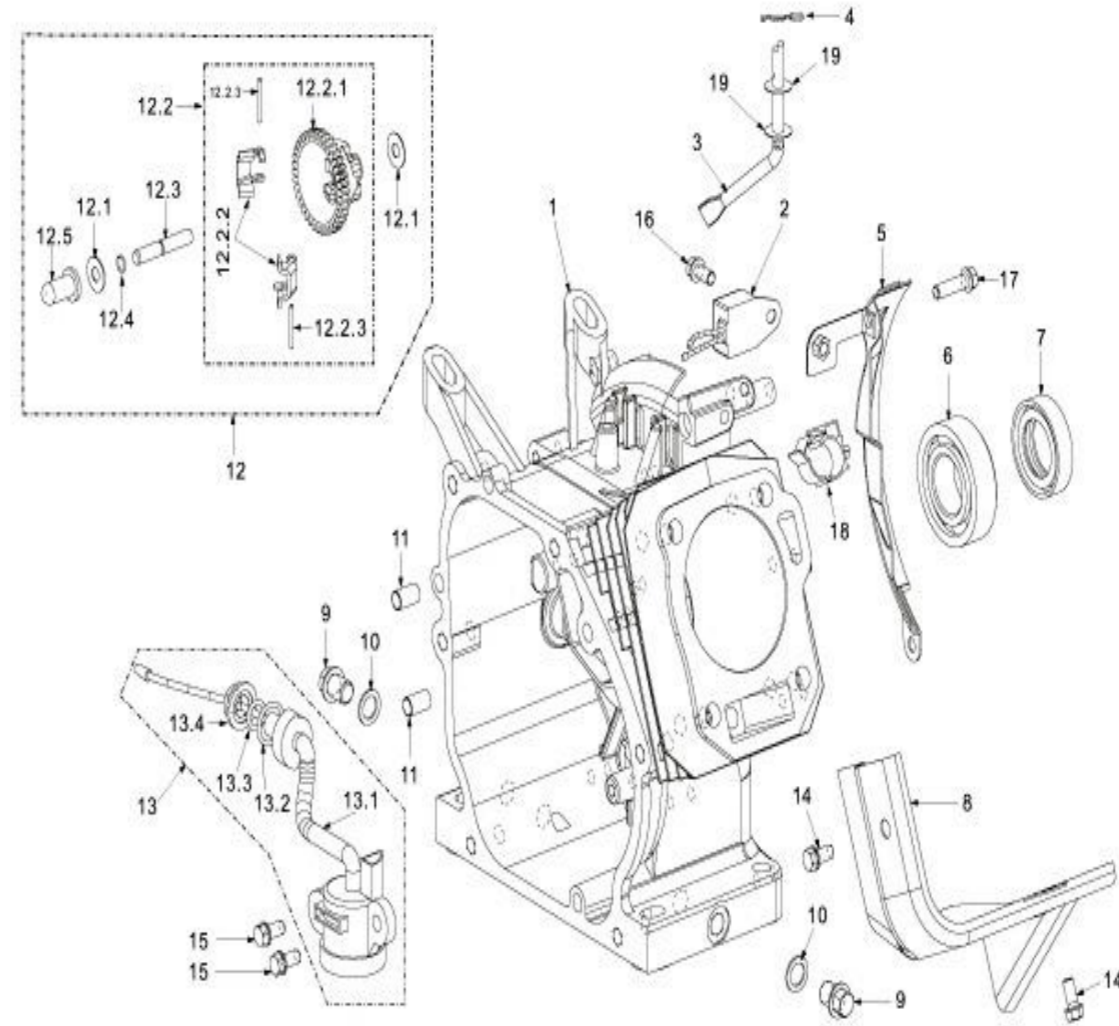


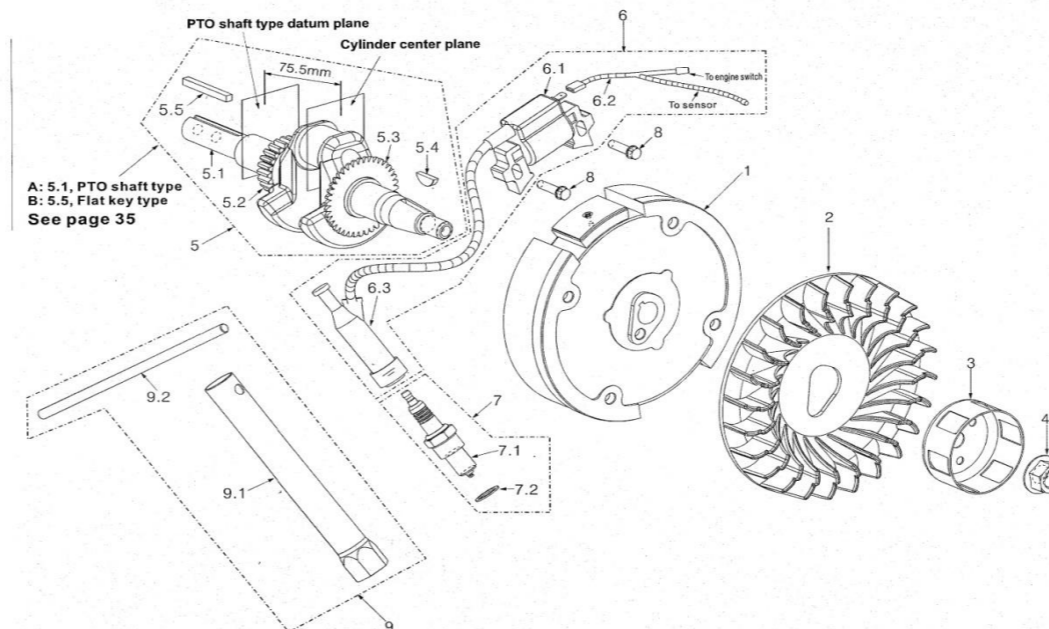
| 160/200 kerosene Engine-Part 1 - Crankcase | | | |
|--|------------------|--------------------------------|----------|
| Sl. No | Ref No. | Part Name | Part No |
| 1 | 68FK-1-A.01.1001 | Crankcase Body | 1-1 |
| 2 | 68F-1.40.2000 | Current Amplifier | 1-2 |
| 3 | 68F-1.51.0001 | Sway bar | 1-3 |
| 4 | 68F-1.51.0003 | Split Clip | 1-4 |
| 5 | 68F-1G.01.3000 | Side Plate | 1-5 |
| 6 | GB/T 276-94 | Ball Bearing 6205 | 1-6 |
| 7 | 68F-1.01.0002 | Oil seal crankcase(25*41.25*6) | 1-7 |
| 8 | 68F-1.60.0001 | Wind guide | 1-8 |
| 9 | 68F-1.01.0004 | Drain bolt | 1-9 |
| 10 | 68F-1.01.0005 | Washer Drain bolt | 1-10 |
| 11 | 68F-1.01.0003 | Set pin 8X14 | 1-11 |
| 12 | 68F-1.50.0000 | Centrifugal gear Parts | 1-12 |
| 12-1 | 68F-1.50.0004 | Washer, slip cap 6x15x0.5 | 1-12.1 |
| 12-2 | 68F-1.50.1000 | Centrifugal gear Assy | 1-12.2 |
| 12-2-1 | 68F-1.50.1001 | centrifugal gear | 1-12.2.1 |
| 12-2-2 | 68F-1.50.1003 | Centrifugal block | 1-12.2.2 |
| 12-2-3 | 68F-1.50.1004 | pin, centrifugal block | 1-12.2.3 |
| 12-3 | 68F-1.50.0001 | Centre axis | 1-12.3 |
| 12-4 | 68F-1.50.0002 | Clip centre axis | 1-12.4 |
| 12-5 | 68F-1.50.0005 | Slip cap | 1-12.5 |
| 13 | 68F-1.40.1000 | Oil sensor Assy | 1-13 |
| 13-1 | 68F-1.40.1001 | Oil sensor Body | 1-13.1 |
| 13-2 | GB 3452. 1-92 | O-Ring 17 x 2 | 1-13.2 |
| 13-3 | GB 3452. 1-92 | O-Ring 11 x 2 | 1-13.3 |
| 13-4 | GB6170 | Nut M10 | 1-13.4 |
| 14 | GB5787 | Bolt M6 x 10 | 1-14 |
| 15 | GB5787 | Bolt M6 x 14 | 1-15 |
| 16 | GB5787 | Bolt M6 x 12 | 1-16 |
| 17 | GB5787 | Bolt M6 x 20 | 1-17 |
| 18 | 68F-1G.01.3004 | Rubber wire hoop | 1-18 |
| 19 | 68F-1.50.0004 | Washer Slip Cap 6x15x0.5 | 1-19 |



PART 2

160/200- kerosene Engine-Part 2 - Cranshaft (Oil Sensor)

| Sl. No | Ref No. | Part Name | Part No |
|--------|-----------------|--------------------|---------|
| 1 | 68FK-1.05.2000 | Fly Wheel Assy | 2-1 |
| 2 | 68F-1.05.0001 | Fly Wheel Fan | 2-2 |
| 3 | 68F-1.05.0002 | Starter Sleeve | 2-3 |
| 4 | GB6177 | Nut Fly wheel Assy | 2-4 |
| 5 | 68F.05.1000-X | Crankshaft assem. | 2-5 |
| 5-1 | 68F.05.1001-X | Crank Shaft | 2-5.1 |
| 5-2 | 68F-1.05.1002 | Timing Gear | 2-5.2 |
| 5-3 | 68F-1.05.1003 | Governer Gear | 2-5.3 |
| 5-4 | GB1099-79 | Woodrufft key | 2-5.4 |
| 5-5 | 68F-1.05.1005-X | Flat Key | 2-5.5 |
| 6 | 68F-1.06.1000 | Ignition Coil Assy | 2-6 |
| 6-1 | 68F-1.06.1001 | Ignition Coil | 2-6.1 |



| | | | |
|-----|---------------|--------------------|-------|
| 6-2 | 68F-1.06.1002 | Stop lead | 2-6.2 |
| 6-3 | 68F-1.06.1003 | Spark Plug Cap | 2-6.3 |
| 7 | 68F-1.06.2000 | Spark Plug Assem. | 2-7 |
| 7-1 | 68F-1.06.2001 | Spark plug | 2-7.1 |
| 7-2 | 68F-1.06.2002 | Washer, Spark Plug | 2-7.2 |
| 8 | GB5787 | Bolt 6 x 25 | 2-8 |
| 9 | 68F-1.90.0000 | Tools | 2-9 |
| 9.1 | 68F-1.90.0001 | Wrench, Spark plug | 2-9.1 |
| 9.2 | 68F-1.90.0003 | Handle | 2-9.2 |

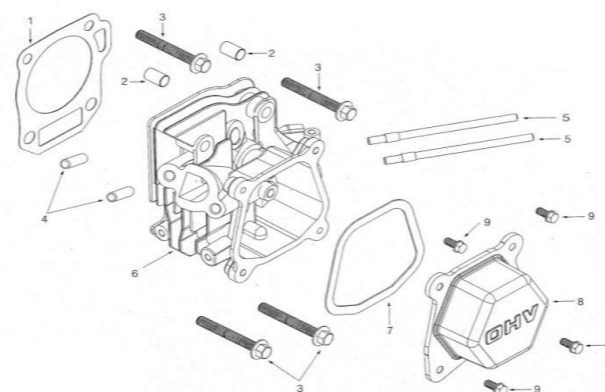
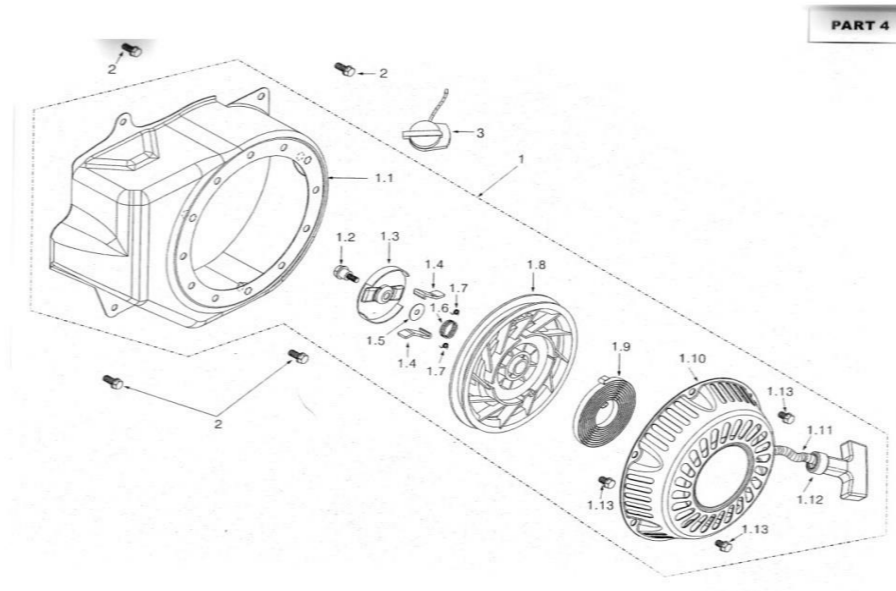
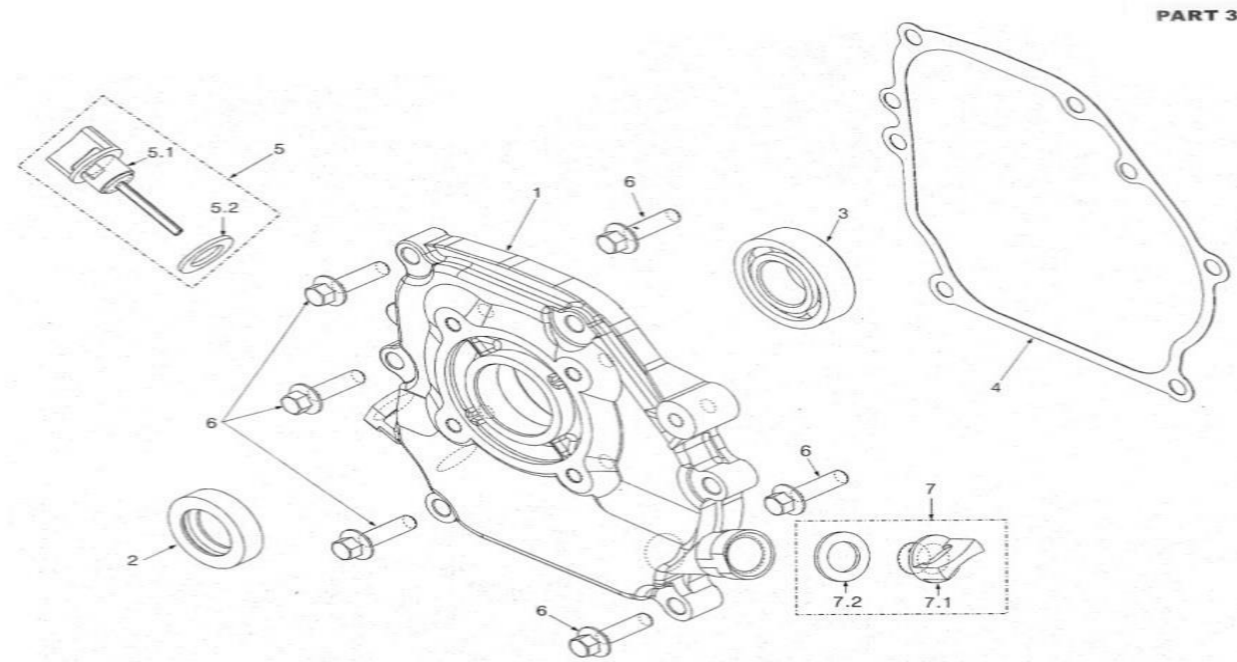
| 160/200- kerosene Engine-Part -3-Crankcase cover parts | | | |
|--|---------------|---------------------|---------|
| Sl. No | Ref No. | Part Name | Part No |
| 1 | 68F-1.01.2001 | Crankcase cover | 3-1 |
| 2 | 68F-1.01.0002 | Oil Seal 25x41.25x6 | 3-2 |
| 3 | GB/T 276-94 | Ball Bearing 6205 | 3-3 |
| 4 | 68F-1.01.0001 | Gasket crankcase | 3-4 |
| 5 | 68F-1.01.2100 | oil gauge assembly | 3-5 |
| 5-1 | 68F-1.01.2101 | Oil Gauge | 3-5.1 |
| 5-2 | 68F-1.01.2102 | seal-oil guage | 3-5.2 |
| 6 | GB5787 | Bolt M8 x 30 | 3-6 |
| 7 | 68F-1.01.2200 | Oil Plug assembly | 3-7 |
| 7-1 | 68F-1.01.2201 | Oil plug | 3-7.1 |
| 7-2 | 68F-1.01.2102 | Seal Oil Plug | 3-7.2 |

160/200- kerosene Engine-Part -4 - Recoil Starter

| Sl. No | Ref No. | Part Name | Part No |
|--------|----------------|--------------------------------------|---------|
| 1 | 68F-1.30.0000A | Recoil Starter Assy Without fancover | 4-1 |
| 1-1 | 68F-1.30.0001 | Fan cover | 4-1.1 |
| 1-2 | 68F-1.30.0009 | Pivot bolt M5 x 17 | 4-1.2 |
| 1-3 | 68F-1.30.0011 | Ratchet guide | 4-1.3 |
| 1-4 | 68F-1.30.0004 | Ratchet | 4-1.4 |
| 1-5 | 68F-1.30.0012 | Washer - recoil 5x17x0.5 | 4-1.5 |
| 1-6 | 68F-1.30.0006 | Friction Spring 16x1 | 4-1.6 |
| 1-7 | 68F-1.30.0005 | Ratchet Spring 5.5x0.2 | 4-1.7 |
| 1-8 | 68F-1.30.0008 | Roller | 4-1.8 |
| 1-9 | 68F-1.30.0013 | Starter spring | 4-1.9 |
| 1-10 | 68F-1.30.0010A | Starter cover | 4-1.10 |
| 1-11 | 68F-1.30.0002 | Rope | 4-1.11 |
| 1-12 | 68F-1.30.0003 | Pulling handle | 4-1.12 |
| 1-13 | GB39 | Bolt M6x8 | 4-1.13 |
| 2 | GB5787 | Bolt M6x12 | 4-2 |
| 3 | 68F-1.34.1000 | Engine switch | 4-3 |

N/A

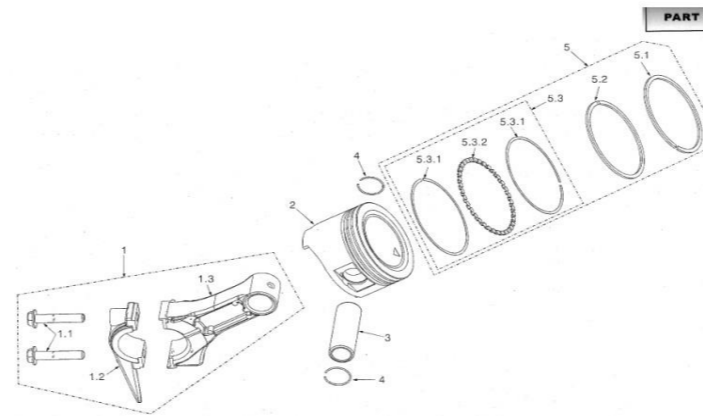
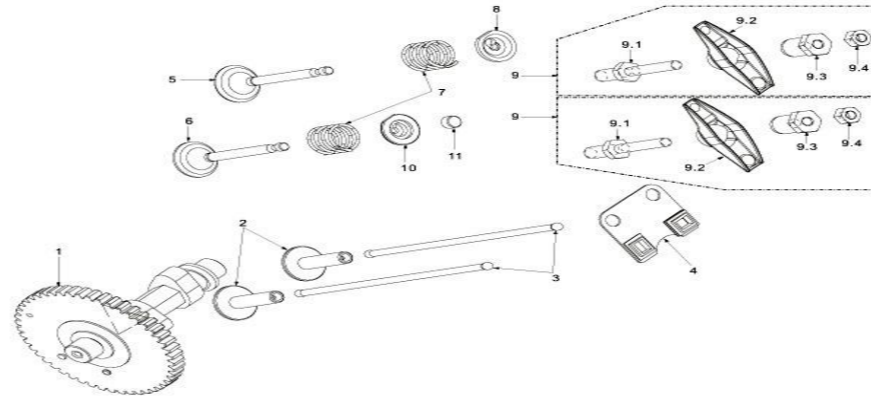
| 160/200- kerosene Engine-Part-5-Cylinder Head | | | |
|---|---------------|---------------------------|---------|
| Sl. No | Ref No. | Part Name | Part No |
| 1 | 68FK.07.0009 | Gasket Cylinder head | 5-1 |
| 2 | 68F-1.07.0012 | Set pin 10x14 | 5-2 |
| 3 | GB5789 | Bolt M8 x 60, | 5-3 |
| 4 | 68F-1.07.0008 | Stud Exhaust Port M8 x 32 | 5-4 |
| 5 | 68F-1.07.0007 | Stud Intake Port M6 x 113 | 5-5 |



| | | | |
|---|----------------|----------------------------|-----|
| 6 | 68FK.07.1000 | Cylinder head Assy | 5-6 |
| 7 | 68F-1.03.0001 | Gasket Cylinder head cover | 5-7 |
| 8 | 68F-1.03.1000A | Cylinder head cover | 5-8 |
| 9 | GB5787 | Bolt M6x12 | 5-9 |

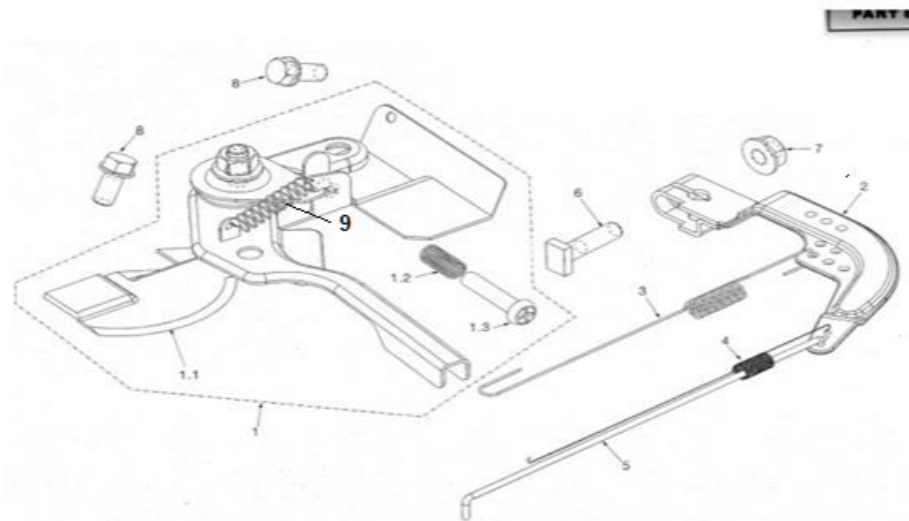
160/200- kerosene Engine-Part - 6 - Cam Shaft

| Sl. No | Ref No. | Part Name | Part No |
|--------|---------------|---------------------------|---------|
| 1 | 68FK.04.1000 | Cam Shaft Assy | 6-1 |
| 2 | 68F.09.0002 | Tappet | 6-2 |
| 3 | 68F-1.09.0001 | Pusher | 6-3 |
| 4 | 68F-1.07.0014 | Pusher guide | 6-4 |
| 5 | 68F-1.07.0001 | Intake Valve | 6-5 |
| 6 | 68F.07.0002 | Exhaust Valve | 6-6 |
| 7 | 68F-1.07.0003 | Valve Spring | 6-7 |
| 8 | 68F-1.07.0004 | Spring seat Intake Valve | 6-8 |
| 9 | 68F-1.07.2000 | Rocker Ass. | 6-9 |
| 9-1 | 68F-1.07.2002 | Stud Rocker Assy | 6-9.1 |
| 9-2 | 68F-1.07.2001 | Rocker | 6-9.2 |
| 9-3 | 68F-1.07.2003 | Adjust Nut Sphere | 6-9.3 |
| 9-4 | 68F-1.07.2004 | Lock Nut | 6-9.4 |
| 10 | 68F-1.07.0005 | Spring Seat Exhaust Valve | 6-10 |
| 11 | 68F-1.07.0006 | Cap Exhaust Valve | 6-11 |



160/200- kerosene Engine-Part - 7 - Piston

| Sl. No | Ref No. | Part Name | Part No |
|--------|---------------|---------------------------|---------|
| 1 | 68F-1.02.3000 | Connecting rod assy | 7-1 |
| 1-1 | 68F-1.02.3003 | Bolt connecting rod M7x35 | 7-1.1 |
| 1-2 | 68F-1.02.3002 | Cover, connecting rod | 7-1.2 |
| 1-3 | 68F-1.02.3001 | Body, connecting rod | 7-1.3 |
| 2 | 68F.02.1001 | Piston | 7-2 |
| 3 | 68F-1.02.1002 | Piston Pin | 7-3 |
| 4 | 68F-1.02.1003 | Clip Piston Pin | 7-4 |
| 5 | 68F-1.02.2000 | Piston Ring Assy | 7-5 |
| 5-1 | 68F-1.02.2001 | First air ring | 7-5.1 |
| 5-2 | 68F-1.02.2002 | Second air ring | 7-5.2 |
| 5-3 | 68F-1.02.2100 | Oil ring Ass. | 7-5.3 |
| 5-3.1 | 68F-1.02.2101 | Scraper ring | 7-5.3.1 |
| 5-3.2 | 68F-1.02.2102 | Set off ring | 7-5.3.2 |



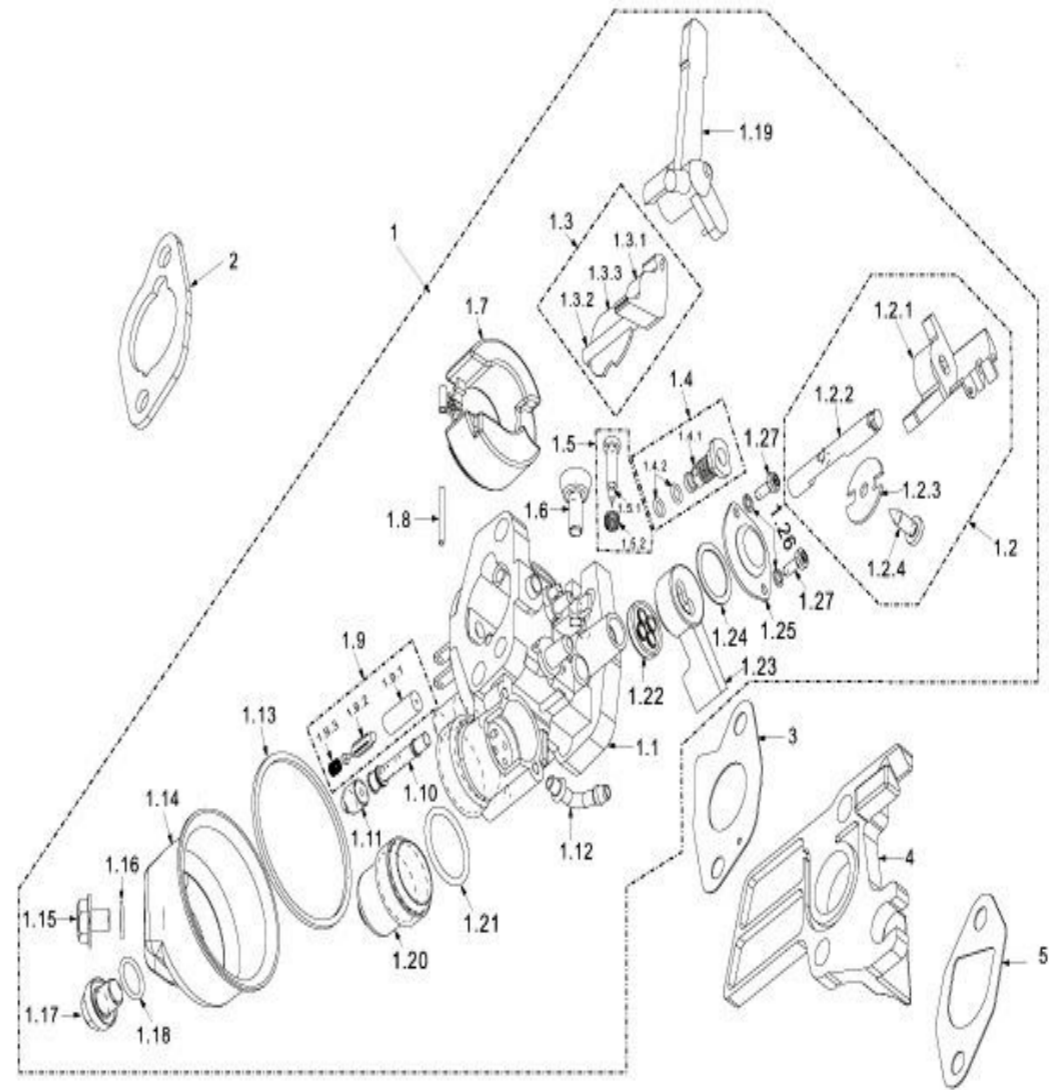
160/200- kerosene Engine-Part - 8 - Speed Adjustment Base Parts

| Sl. No | Ref No. | Part Name | Part No |
|--------|---------------|-----------------------------|---------|
| 1 | 68F-1.53.0000 | Speed Adjustment base parts | 8-1 |
| 1-1 | 68F-1.53.1000 | Speed Adjustment Base Ass. | 8-1.1 |
| 1-2 | 68F-1.53.0002 | Adjustment Spring | 8-1.2 |
| 1-3 | GB823 | Adjustment Screw | 8-1.3 |
| 2 | 68F-1.51.0004 | Speed Adjustment arm | 8-2 |
| 3 | 68F.51.0007 | Return Spring | 8-3 |
| 4 | 68F-1.51.0008 | Fine Adjustment Spring | 8-4 |
| 5 | 68F-1.51.0006 | Pulling Rod | 8-5 |

| | | | |
|---|---------------|---------------------|-----|
| 6 | 68F-1.51.0005 | Quadrate bolt M6x21 | 8-6 |
| 7 | GB6177 | Nut M6 | 8-7 |
| 8 | GB5787 | Bolt M6 x 12 | 8-8 |
| 9 | | Throttle spring | 8-9 |

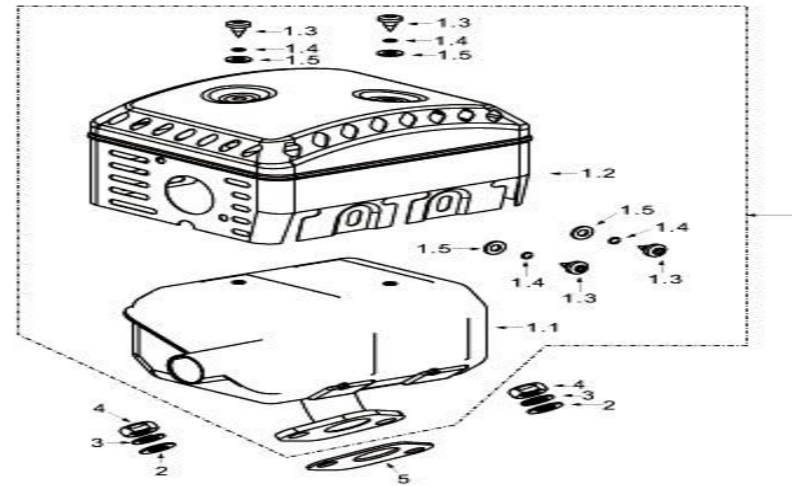
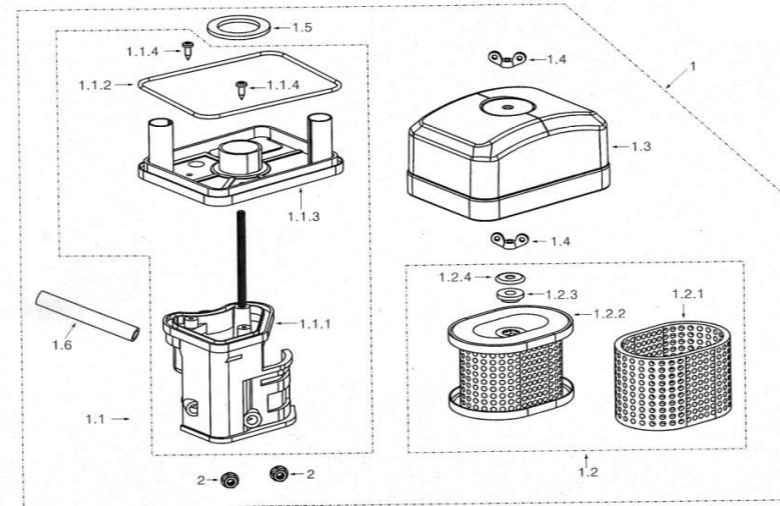
160/200- kerosene Engine-Part - 9 - Carburetor Parts

| Sl. No | Ref No. | Part Name | Part No |
|--------|----------------|---|---------|
| 1 | 68FK.10.1000 | Carburetor Assy | 9-1 |
| 1-1 | 68F-1.10.1001 | Carburetor Body | 9-1.1 |
| 1-2 | 68F-1.10.1100 | Throttle Valve Assy | 9-1.2 |
| 1-2.1 | 68F-1.10.1101 | Throttle Valve Cap | 9-1.2.1 |
| 1-2.2 | 68F-1.10.1102 | Throttle Valve axis | 9-1.2.2 |
| 1-2.3 | 68F-1.10.1103 | Throttle Valve | 9-1.2.3 |
| 1-2.4 | 68F-1.10.1104 | Screw M4*12 | 9-1.2.4 |
| 1-3 | 68F-1.10.1200 | Chock Valve Assy | 9-1.3 |
| 1-3.1 | 68F-1.10.1201 | Chock Valve cap | 9-1.3.1 |
| 1-3.2 | 68F-1.10.1202 | Chock Valve axis | 9-1.3.2 |
| 1-3.3 | 68F-1.10.1203 | Chock Valve | 9-1.3.3 |
| 1-4 | 68F-1.10.1300 | Measure hole Assy idel speed | 9-1.4 |
| 1-4.1 | 68F-1.10.1301 | Measure hole, idel speed | 9-1.4.1 |
| 1-4.2 | 68F-1.10.1302 | O-ring 4.7x1 | 9-1.4.2 |
| 1-5 | 68F-1.10.1400 | Adjustment Screw Assy (mixture ratio) | 9-1.5 |
| 1-5.1 | 68F-1.10.1401 | Adjustment screw,(mixture ratio M4x12) | 9-1.5.1 |
| 1-5.2 | 68F-1.10.1402 | Spring | 9-1.5.2 |
| 1-6 | 68F-1.10.1002 | Adjustment screw Idle speed | 9-1.6 |
| 1-7 | 68F-1.10.1003 | Fuel Floater | 9-1.7 |
| 1-8 | 68F-1.10.1004 | Pin Fuel Floater | 9-1.8 |
| 1-9 | 68F-1.10.1500 | Needle Valve Assy | 9-1.9 |
| 1-9.1 | 68F-1.10.1501 | Needle Valve seat | 9-1.9.1 |
| 1-9.2 | 68F-1.10.1502 | Needle Valve | 9-1.9.2 |
| 1-9.3 | 68F-1.10.1503 | Spring, Needle valve | 9-1.9.3 |
| 1-10 | 68F.10.1005 | Main Jet | 9-1.10 |
| 1-11 | 68F.10.1006 | Main Measuring hole | 9-1.11 |
| 1-12 | 68F-1.10.1007 | Fuel inlet Tube | 9-1.12 |
| 1-13 | 68F-1.10.1008 | Rubber seal (Fuel cup) | 9-1.13 |
| 1-14 | 68FK-1.10.1009 | Fuel cup | 9-1.14 |
| 1-15 | 68F-1.10.1010 | Fuel drain plug (new) | 9-1.15 |
| 1-16 | 68F-1.10.1011 | Gasket fuel drail plug | 9-1.16 |
| 1-17 | 68F-1.10.1012 | Tighten bolt (Fuel cup) | 9-1.17 |
| 1-18 | 68F-1.10.1013 | O-ring 11x1.5 | 9-1.18 |
| 1-19 | 68F-1.10.1014 | Hand grip chock valve assy | 9-1.19 |
| 1-20 | 68F-1.10.1015 | Sediment cup | 9-1.20 |
| 1-21 | 68F-1.10.1016 | O-ring 21x2 | 9-1.21 |
| 1-22 | 68F-1.10.1017 | Fuel Valve | 9-1.22 |
| 1-23 | 68F-1.10.1018 | Handle Bar | 9-1.23 |
| 1-24 | 68F-1.10.1019 | Spring Washer- | 9-1.24 |
| 1-25 | 68F-1.10.1020 | Upper cover | 9-1.25 |
| 1-26 | GB93 | Spring washer-small 3 | 9-1.26 |

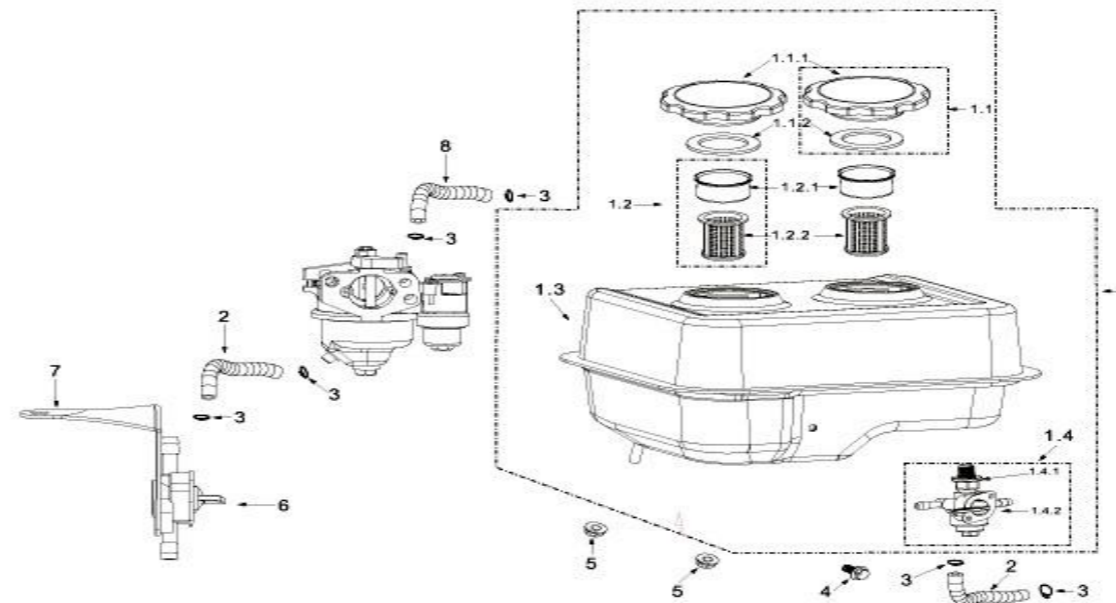


| | | | |
|------|---------------|--------------------|--------|
| 1-27 | GB818 | Screw M3x7 | 9-1.27 |
| 2 | 68F-1.20.0001 | Steel gasket | 9-2 |
| 3 | 68F-1.10.0003 | Gasket carburetor | 9-3 |
| 4 | 68F-1.10.0001 | Block,Carburetor | 9-4 |
| 5 | 68F-1.07.0010 | Gasket, inlet port | 9-5 |

| 160/200- kerosene Engine-Part - 10 - Air Cleaner (Hemi -Dry type) | | | |
|---|------------------|-----------------------|----------|
| Sl. No | Ref No. | Part Name | Part No |
| 1 | 68F-1.20.1000-HA | Air Cleaner Assy | 10-1 |
| 1-1 | 68F-1.20.1100-H | Air Cleaner Seat Ass. | 10-1.1 |
| 1-1.1 | 68F-1.20.1101-W | Air Cleaner seat | 10-1.1.1 |
| 1-1.2 | 68F-1.20.1102-H | Seal Ring | 10-1.1.2 |
| 1-1.3 | 68F-1.20.1103-H | Cover board | 10-1.1.3 |
| 1-1.4 | GB818 | Screw M4 x 12 | 10-1.1.4 |
| 1-2 | 68F-1.20.1200-H | Filter Assy | 10-1.2 |
| 1-2.1 | 68F-1.20.1201-H | Foam Filter | 10-1.2.1 |
| 1-2.2 | 68F-1.20.1202-H | Papery Filter | 10-1.2.2 |
| 1-2.3 | 68F-1.20.1203-H | Rubber Fixer | 10-1.2.3 |
| 1-2.4 | 68F-1.20.1204-H | Discal Washer | 10-1.2.4 |
| 1.3 | 68F-1.20.1004-HA | Filter Case | 10-1.3 |
| 1.4 | GB62-88A | Butter Fly nut M6 | 10-1.4 |
| 1.5 | 68F-1.20.1007-H | Seal Ring 32x47x3 | 10-1.5 |
| 1.6 | 68F-1.20.1008 | Air duck | 10-1.6 |
| 2 | GB6177 | Nut M6 | 10-2 |



| 160/200- kerosene Engine-Part - 11 - Muffler Parts | | | |
|--|----------------|-----------------------|---------|
| Sl. No | Ref No. | Part Name | Part No |
| 1 | 68F-1.26.1000A | Muffler Ass. | 11-1 |
| 1.1 | 68F-1.26.1001 | Muffler body | 11-1.1 |
| 1.2 | 68F-1.26.1002A | Protector Muffler -A | 11-1.2 |
| 1.3 | GB818 | Screw M5 x 8 | 11-1.3 |
| 1.4 | GB93 | Spring washer Φ5 | 11-1.4 |
| 1.5 | GB9 7 | Washer Φ 5 | 11-1.5 |
| 2 | GB97 | Washer Φ 8 | 11-2 |
| 3 | GB93 | Spring Φ 8 | 11-3 |
| 4 | GB6170 | Nut M8 | 11-4 |
| 5 | 68F-1.07.0011 | Gasket (Exhaust Part) | 11-5 |

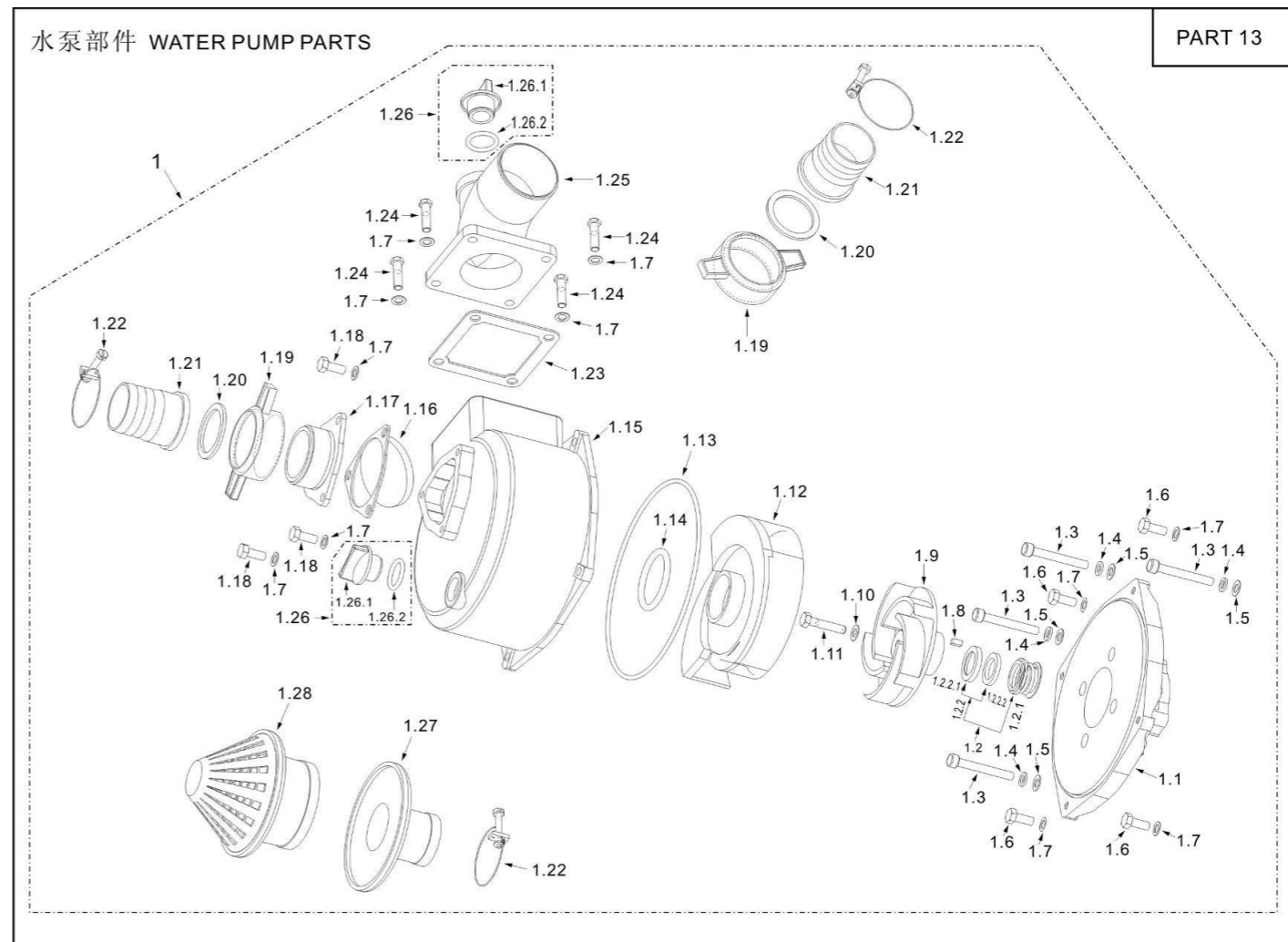


| 160/200- kerosene Engine-Part 12 - Fuel Tank | | | |
|--|-----------------|--------------------------------------|----------|
| Sl. No | Ref No. | Part Name | Part No |
| 1 | 68FK-1.12.1000A | Fuel tank ass. | 12-1 |
| 1.1 | 68F-1.12.1100A | Fuel tank cover Assy. | 12-1.1 |
| 1-1.1 | 68F-1.12.1101A | Fuel tank cover | 12-1.1.1 |
| 1-1.2 | 68F-1.12.1102 | Rubber seal, Fuel tank cover 38x56x3 | 12-1.2 |
| 1.2 | 68F-1.12.1200 | Fuel filter assy | 12-1.2 |
| 1-2.1 | 68F-1.12.1201 | Support, Fuel filter | 12-1.2.1 |
| 1-2.2 | 68F-1.12.1202 | Fuel filter | 12-1.2.2 |
| 1.3 | 68F-1.12.1001A | Fuel tank | 12-1.3 |

| | | | |
|-------|----------------|---------------------------|----------|
| 1.4 | 68FK-1.12.2000 | Fuel joint assy | 12-1.4 |
| 1-4.1 | GB6177 | Nut M10 | 12-1.4.1 |
| 1-4.2 | 68FK-1.12.2002 | Fuel joint | 12-1.4.2 |
| 2 | 68F-1.12.0001 | Fuel tube 8.5x4.5 (Drain) | 12-2 |
| 3 | 68F-1.12.0002 | Clip Fuel tube | 12-3 |
| 4 | GB5787 | Bolt M6 x 28 | 12-4 |
| 5 | GB6177 | Nut M6 | 12-5 |
| 6 | 68F-1.12.3000 | Fuel joint (for drain) | 12-6 |
| 7 | 68F-1.12.4000 | Bracket | 12-7 |
| 8 | 68F-1.12.5000 | Fuel tube 8.5x13.5 | 12-8 |

Water Pump Parts

| S.No | Parts Code | Parts Name | Specification | The List |
|---------|--------------|--------------------------------------|---------------|----------|
| 13-1 | WP80.10.0000 | Water Pump Parts | | 1 |
| 13-1.1 | WP80.10.0021 | Pump Cover | 3 inch | 1 |
| 13-1.2 | WP80.10.1000 | Water Seal ass. | | 1 |
| 13-1.2. | WP80.10.1100 | Static water seal ass. | | 1 |
| 13-1.2. | WP80.10.1200 | Dynamic water seal ass. | | 1 |
| 13-1.2. | WP80.10.1201 | Rubber seal, Ceramic seal body | | 1 |
| 13-1.2. | WP80.10.1202 | Ceramic seal body | | 1 |
| 13-1.3 | WP80.10.0017 | Bolt | M8 * 60 | 4 |
| 13-1.4 | WP80.10.0018 | Rubber gasket | Φ8 *Φ14 *2 | 4 |
| 13-1.5 | WP80.10.0019 | washer | Φ8 *12*1 | 4 |
| 13-1.6 | GB5780 | Bolt | M10 * 25 | 4 |
| 13-1.7 | GB97 | washer | Φ10 | 11 |
| 13-1.8 | WP80.10.0014 | Flat Key | 5 * 5 * 10 | 1 |
| 13-1.9 | WP80.10.0013 | Impeller | | 1 |
| 13-1.1 | WP80.10.0025 | washer | 8 * Φ 16 *1 | 1 |
| 13-1.11 | WP80.10.0024 | Bolt | m8*40 | 1 |
| 13-1.12 | WP80.10.0012 | Turbine | | 1 |
| 13-1.13 | WP80.10.0020 | O-Ring(Pump body) | 229*Φ3.5 | 1 |
| 13-1.14 | WP80.10.0026 | O-Ring(Turbine) | 85*Φ6 | 1 |
| 13-1.15 | WP80.10.0011 | Pump body | 3 inch | 1 |
| 13-1.16 | WP80.10.0022 | rubber gasket, Triangle flange | | 1 |
| 13-1.17 | WP80.10.0008 | Triangle flange | 3 inch | 1 |
| 13-1.18 | GB5780 | Bolt | m10 * 20 | 3 |
| 13-1.19 | WP80.10.0002 | Flange nut | 3 inch | 2 |
| 13-1.20 | WP80.10.0005 | Rubber gasket, inlet and outlet pipe | 85*Φ65*4 | 2 |
| 13-1.21 | WP80.10.0004 | Inlet and outlet pipe | 3 inch | 2 |
| 13-1.22 | WP80.10.0003 | Pipe hoop | 65 mm -89m | 3 |
| 13-1.23 | WP80.10.0009 | Rectangular rubber gasket | | 1 |
| 13-1.24 | GB5780 | Bolt | m10*30 | 4 |
| 13-1.25 | WP80.10.0010 | Pump Elbow | 3 inch | 1 |
| 13-1.26 | WP80.10.2000 | Rubber Plug ass. | | 1 |
| 13-1.26 | WP80.10.2001 | Rubber Plug ass. | | 2 |
| 13-1.26 | WP80.10.2002 | O-Ring(Rubber Plug) | 32*Φ3.1 | 2 |
| 13-1.27 | WP80.10.2027 | Cover, Taper filter | 3 inch | 1 |



| | | | | |
|---------|--------------|--------------|--------|---|
| 13-1.28 | WP80.10.0001 | Taper filter | 3 inch | 1 |
|---------|--------------|--------------|--------|---|

| S.No | Parts Code | Parts Name | Specification | The List |
|------|--------------|------------------|---------------|----------|
| 14-1 | WP80.10.0000 | Water Pump Parts | | 1 |
| 14-2 | 2-3.87.0001 | Frame absorber | | 4 |
| 14-3 | GB6170 | Nut | M8 | 4 |
| 14-4 | GB93 | Spring washer | Φ8 | 4 |
| 14-5 | GB97 | washer | Φ8 | 4 |
| 14-6 | GB5787 | Bolt | M6*12 | 4 |
| 14-7 | GB5787 | Bolt | M8*35 | 4 |

FRAME PARTS

PART 14

